

LIFE IS GREAT
INSIDE AND OUT



HONER
AQUANTIS

Gopanpally, Hyderabad

TS RERA Reg No. **P02400001263**

Tower- A, B & C

Tower- C

Tower- A

Tower- B



Construction Status as
on 30th September, 2022



Note:

Tower- A, B & C: Texture work in progress*
Possession in March 2023*

Phase- I



Tower- D & E

Tower- D

Tower- E



Construction Status as
on 30th September, 2022



Tower- D & E: Up to 27th Floor Completed

Phase- II



Tower- F



Tower- F

Construction Status as
on 30th September, 2022



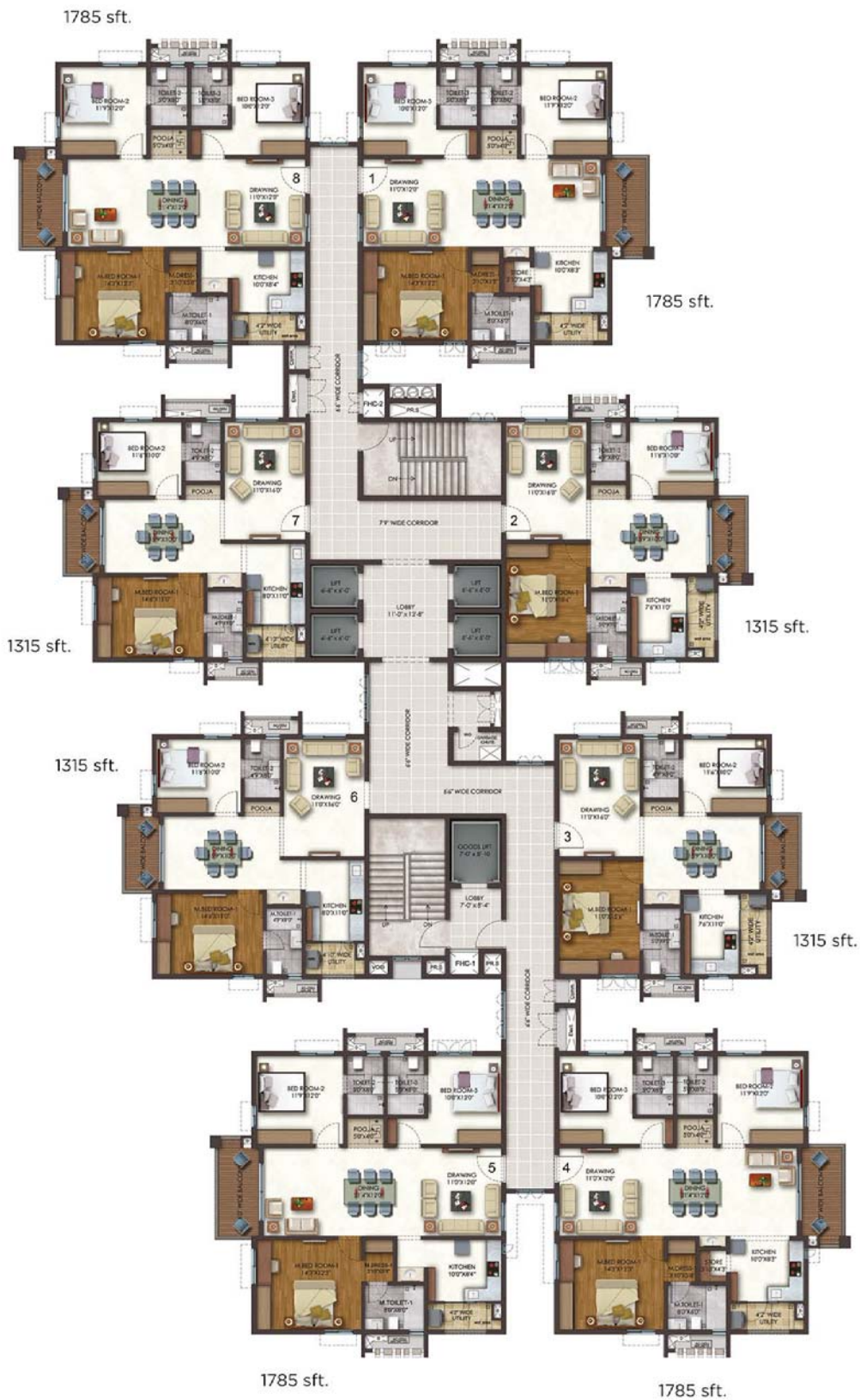
Tower - F: Up to 23rd Floor Completed

Phase- II



Typical Floor Plan Tower A & F

2 & 3 BHK



Typical Floor Plan Tower B & D

2 & 3 BHK

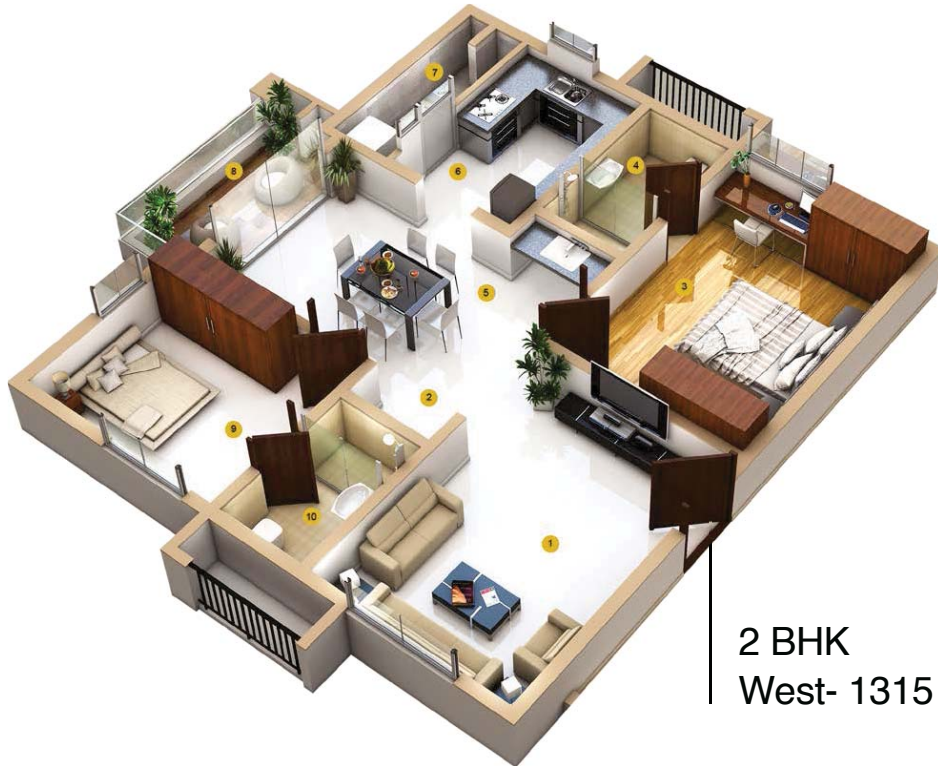


Typical Floor Plan Tower C & E

3 BHK



Live in For
Two & Three



2 BHK
West- 1315 sft.



3 BHK
West- 1610 sft.

Live in For
A Big Family



3 BHK
East- 1785 sft.



3 BHK
West- 1965 sft.

Amenities



CLUBHOUSE

Spread across 50,000 sft.



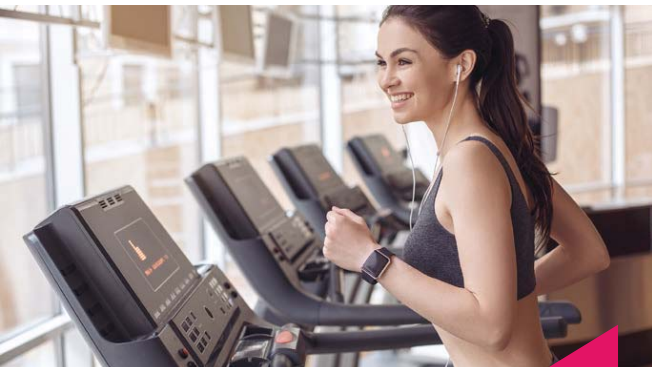
SWIMMING POOL

Life is better poolside



SALON & SPA

Make the most of your me time



GYM

Discover the best version of you in the ultra-modern Gym



BILLIARDS LOUNGE

The table is yours to clear

Amenities



PATHWAY & JOGGING TRACK

Jogging tracks dedicated for your run



TENNIS COURT

Ace your game to the pro level



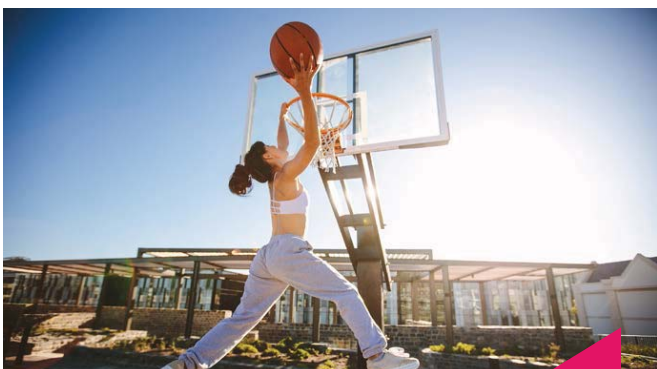
YOGA

Meditation hall to help you maintain good body and sound mind



CYCLING TRACK

Enjoy the ride, every day.



BASKETBALL COURT

Dribble past your worries



CRICKET PRACTICE PITCH

For the champions in making

In and Around



Offices

| | | |
|------------------------|-----------|---------|
| Wipro Phase-II | : 02.5 km | -07 min |
| Q City | : 04.6 km | -09 min |
| Wipro | : 05.6 km | -10 min |
| Microsoft | : 06.0 km | -12 min |
| Waverock | : 06.5 km | -11 min |
| Infosys | : 06.9 km | -12 min |
| Amazon Campus | : 07.3 km | -20 min |
| DLF Towers | : 09.6 km | -19 min |
| Divyasree NSL Orion | : 11.0 km | -21 min |
| Wells Fargo-IBM Campus | : 11.0 km | -21 min |
| Cyber Gateway | : 13.6 km | -27 min |
| Raheja IT park | : 13.8 km | -28 min |



Hospitals

| | | |
|-------------------|-----------|---------|
| Citizens | : 04.4 km | -10 min |
| Pranaam | : 05.2 km | -12 min |
| Continental | : 06.0 km | -12 min |
| AIG | : 11.0 km | -23 min |
| Care Hospital | : 11.4 km | -21 min |
| Apollo Cradle | : 12.0 km | -25 min |
| Sunshine Hospital | : 12.4 km | -23 min |
| KIMS | : 12.9 km | -28 min |
| Max Cure | : 14.6 km | -31 min |
| Image Hospital | : 15.7 km | -30 min |



Schools

| | | |
|----------------------------|-----------|---------|
| Manthan School | : 01.0 km | -03 min |
| Epistemo Global | : 02.6 km | -09 min |
| Birla Open Minds School | : 02.6 km | -09 min |
| Vista School | : 02.8 km | -09 min |
| International | : 05.7 km | -17 min |
| Sancta Maria International | : 06.8 km | -16 min |
| Oakridge International | : 07.4 km | -16 min |
| Chirec International | : 08.5 km | -19 min |
| Hyderabad University | : 09.6 km | -22 min |
| Delhi Public School | : 11.9 km | -23 min |
| Srinidhi International | : 18.6 km | -27 min |
| Glendale Academy | : 20.0 km | -32 min |

HONER[®] AQUANTIS

Gopanpally, Hyderabad



Scan this QR code for
Model Flat (1965 Sft.)



Scan this QR code for
Model Flat (1610 Sft.)



Project Approved By:



Project Funding By:



TS RERA Reg No.
P02400001263

Our marketing office is open 7 days a week.

Our Location: Sy No.177, Beside Honer Vivantis, Tellapur road, Gopanpally, Hyderabad - 500019.

Call: 78278 66666

www.honerhomes.com | sales@honerhomes.com | [f](https://www.facebook.com/honerhomes) [i](https://www.instagram.com/honerhomes) [in](https://www.linkedin.com/company/honerhomes) [yt](https://www.youtube.com/channel/UC...) [p](https://www.pinterest.com/honerhomes) [t](https://www.tiktok.com/@honerhomes) [s](https://www.snapchat.com/add/honerhomes) [wa](https://www.whatsapp.com/channel/0029...) /honerhomes

Disclaimer: This Leaflet/Folder is conceptual and not a legal offering for Sale/Agreement. All images are artist's impressions and for illustrative purpose only.