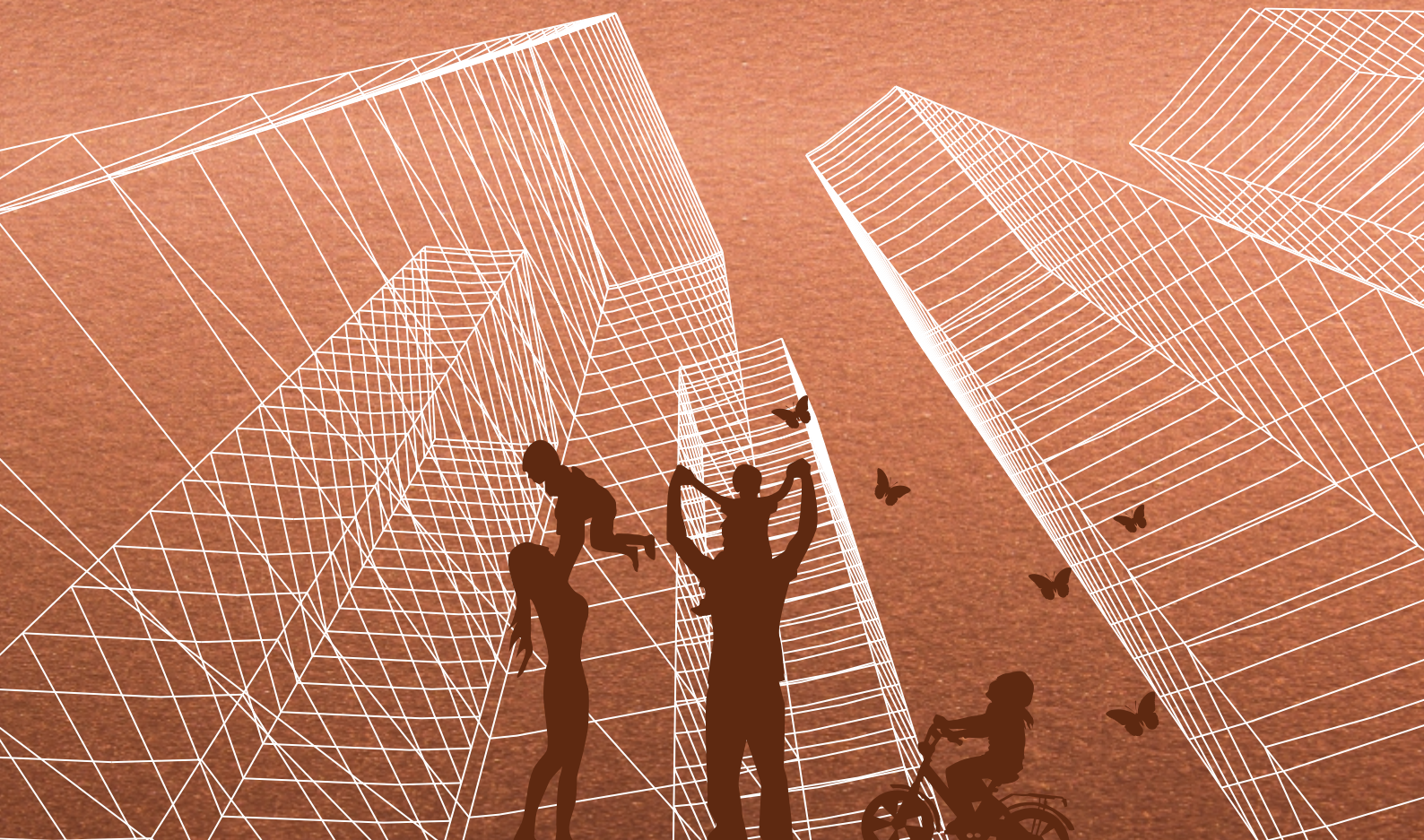


GATHERING BETTER COMMUNITIES!



**HEIGHTS**   
PROJECT BY AKSHITA INFRA

## VISION

To assemble and empower exceptional individuals who are committed to excellence, professional growth and are passionate about winning.

To expand and target to construction of 2.0 lacs sq. ft. built-up area per year by offering dynamic floor plans, acquiring of 100 Acres of land for development with smart options and competitive pricing in locations where people want to live

To embrace cutting edge technologies, best practices and streamlined processes that set us apart from the competition.

---

## MISSION

To perform for our customers the highest level of quality construction services at fair and market competitive prices.

To ensure the longevity of our company through and referral business achieved by customer satisfaction in all areas including timeliness, attention to detail and service-minded attitudes.

To maintain the highest levels of professionalism, integrity, honesty and fairness in our relationships with our suppliers, subcontractors, professional associates and customers.

DISCOVER HOW MUCH  
MORE THERE IS TO LIFE!





TYPICAL FLOOR PLANS



WEST  
**2BHK**  
FLAT NO.: 06 - 1165 sft



WEST  
**2BHK**  
FLAT NO.: 11 - 1165 sft  
FLAT NO.: 09 - 1235 sft  
FLAT NO.: 04 - 1315 sft



WEST  
**2BHK**  
FLAT NO.: 06 - 1165 sft



WEST  
**2BHK**  
FLAT NO.: 11 - 1165 sft  
FLAT NO.: 09 - 1235 sft  
FLAT NO.: 04 - 1315 sft

TYPICAL FLOOR PLANS



EAST  
**2BHK**  
FLAT NO.: 11 - 1190 sft  
FLAT NO.: 10 - 1280 sft



EAST  
**3BHK**  
FLAT NO.: 04 - 1560 sft  
FLAT NO.: 03 - 1660 sft



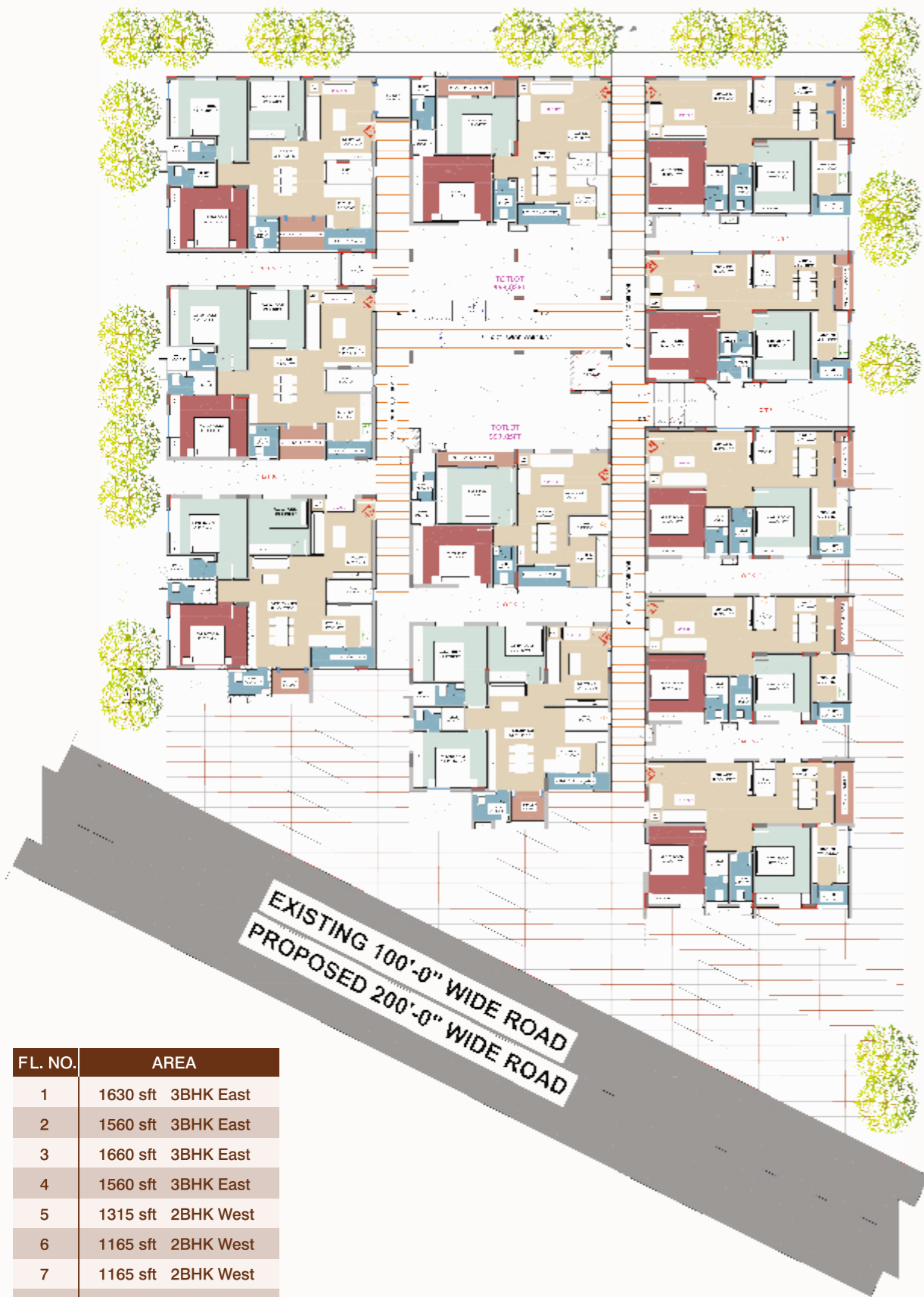
EAST  
**2BHK**  
FLAT NO.: 11 - 1190 sft  
FLAT NO.: 10 - 1280 sft



EAST  
**3BHK**  
FLAT NO.: 04 - 1560 sft  
FLAT NO.: 03 - 1660 sft



## TYPICAL FLOOR PLANS



FL. NO.	AREA
1	1630 sft 3BHK East
2	1560 sft 3BHK East
3	1660 sft 3BHK East
4	1560 sft 3BHK East
5	1315 sft 2BHK West
6	1165 sft 2BHK West
7	1165 sft 2BHK West
8	1165 sft 2BHK West
9	1235 sft 2BHK West
10	1280 sft 2BHK East
11	1190 sft 2BHK East

# SPECIFICATIONS

<b>Super Structure</b>	: Reinforced Cement Concrete Framed Structure.
<b>Walls</b>	: Quality Red brick work in Cement Mortar.
<b>Wall Finish Internal</b>	: Smoothly Finished with Putty JK / TATA/BIRLA/MYK or equivalent and plastic emulsion paint.
<b>External</b>	: Double coat plaster with OBD of Asian Paints make or equivalent for ceiling and columns in parking area. For remaining surfaces Apex, Texture finish with Apex on elevation sides as per design and drawing or equivalent Make .
<b>Doors</b>	: Main door B T framed / vinegar, Internal doors normal Teak wood frame and skin panel/ flush doors spray Enamel painted with reputed Hardware.
<b>Windows</b>	: UPVC Frame with Float Glass along with Mosquito Mesh & Grills.
<b>Flooring</b>	: Double Glazed Vitrified 2x2 tiles of RAK, Johnson or NITCO/Somani/CERA Tiles equivalent make in living room, dining room and Bed rooms.
<b>Corridors</b>	: Granite flooring or equivalent quality material.
<b>Staircase</b>	: SS equivalent quality material.
<b>Kitchen</b>	: Black granite top cooking platform with stainless steel sink, tile dado up to 2ft height. Provision provided for kitchen cabinets, Aqua Guard, Chimney Exhaust Fan, both Municipal and Bore Water connections.
<b>Sanitary</b>	: Hind ware/Somani/Johnson/Parry ware/CERA or equivalent with standard CP fittings.
<b>Toilets</b>	: All toilets provided with EWC and Washbasin (Hind ware/Johnson/Parry ware ESS or equivalent with Standard CP Fittings, hot and cold single liver concealed wall diverter or Wall mixtures, Health Faucet etc. Ceramic tiles dado up to 7 ft. height, Anti-Skid tiles flooring.
<b>Painting</b>	: Plastic emulsion with putty for interior and elevation.
<b>Electrical</b>	: Concealed copper wiring in PVC conduits, Power outlet for air-conditioners in Master bedrooms. Sufficient number of power points for Geysers, Fans, Lights, and separate points for Cable TV and Telephone points in living, drawings and all bedrooms, Poly cab/Anchor/V-Guard, Havel's, Great White, Anchor or equivalent.
<b>Overhead Tank and Sump</b>	: Sump in the Stilt/drive-way area and overhead tank on the terrace area
<b>Bore well</b>	: Bore well of adequate depth with pumping facility
<b>Railing</b>	: Stainless Steel railing for the entire staircase
<b>Amenities</b>	: Children's play area, Broad Band Connectivity, Round the clock security, Intercom Facility and solar fencing.
<b>Lift</b>	: 8/6 Passenger lift (Johnson / Kone) or Equivalent No's -2.
<b>Power Backup</b>	: Power backup for Lifts and Common areas, One Light Point & One Fan Point in each Room.

# LOCATION HIGHLIGHTS

LOCATION	DISTANCE
Bolarum Rail Station	1.3 km
Healthy Brain Hospital	1.6 km
Rush Hospital	2.0 km
Dhola-ri-Dhani	2.1 km
Surekha Hospital	2.7 km
Cine Planet	3.4 km
Bloom Hospitals	4.2 km
Decathlon	6.0 km
Metro	6.4 km
ORR	8.9 km
Alankrita Resorts	10.4 km
Jubilee Bus Station	12.3 km
NALSAR University	16.2 km
Shamirpet Deer Park	18.3 km



# LOCATION MAP

NOT TO SCALE



**HEIGHTS**  
PROJECT BY AKSHITA INFRA

## COMPLETED PROJECTS

- AK HEIGHTS - TWO**  
@ Gachibowli (84 Residential Flats)
- AKSHITA HEIGHTS-ONE**  
@ Alwal (35 Residential Flats)
- AKSHITA HEIGHTS-TWO**  
@ Safilguda (35 Residential Flats)
- AKSHITA GOLDEN BREEZE PHASE-I**  
@ Maheshwaram (28.5 acres, 327 Villa Plots)
- AKSHITA GOLDEN BREEZE PHASE-I EXTENSION**  
@ Maheshwaram (10 Acres, 128 Plots)
- AKSHITA GOLDEN BREEZE PHASE-II**  
@ Maheshwaram (10 Acres, 128 Plots)
- AKSHITA GOLDEN PRIDE**  
@ Pedda Golkonda, ORR Exit 15 (27 Acres project)

## ONGOING PROJECTS

- AKSHITA HEIGHTS**  
@ Maheshwaram Main Road facing (13 Acres project)
- AKSHITA GOLDEN RIDGE**  
@ Gangaram (38 Acres project)
- AKSHITA GOLDEN BREEZE PHASE-III**  
@ Sirigiripuram (13 Acres project)
- AKSHITA'S AK SURYA CITY**  
@ Suryapet (27 Acres project)
- AKSHITA HEIGHTS-THREE**  
@ AS Rao Nagar (90 Residential Flats)
- AKSHITA HEIGHTS-FOUR**  
@ Kompally, Bollaram, 200feet Road (62 Residential Flats)
- AKSHITA HEIGHTS-FIVE**  
@ Bollaram (82 Residential Flats)



H.No. 8-2-269/W/3, Sai Teja Apartment, 1st Floor,  
Women's Society, Sagar Society, Road No-2, Banjara Hills,  
Hyderabad - 500034. Ph: 040 - 48 546 546  
Web: [www.akshitainfra.com](http://www.akshitainfra.com) | Email: [sales@akshitainfra.com](mailto:sales@akshitainfra.com)

Architects & Engineers  
**PINNACLE ARCHITECTS**  
Sri Sai Ram Manor, Flat No.Pg6,  
Srinagar Colony, Hyderabad.  
(M) 9866660099, Ph: 040-42216659.

Note: This flyer is purely a conceptual presentation and not a legal offering.