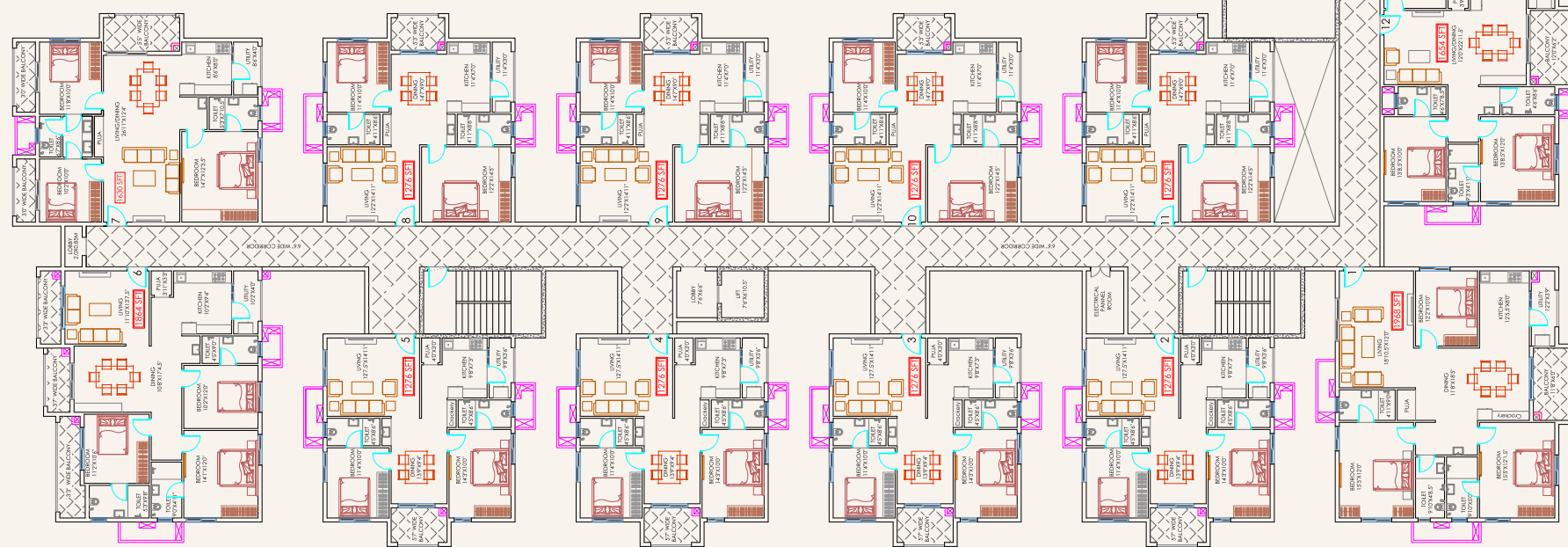


## Typical Floor Plan

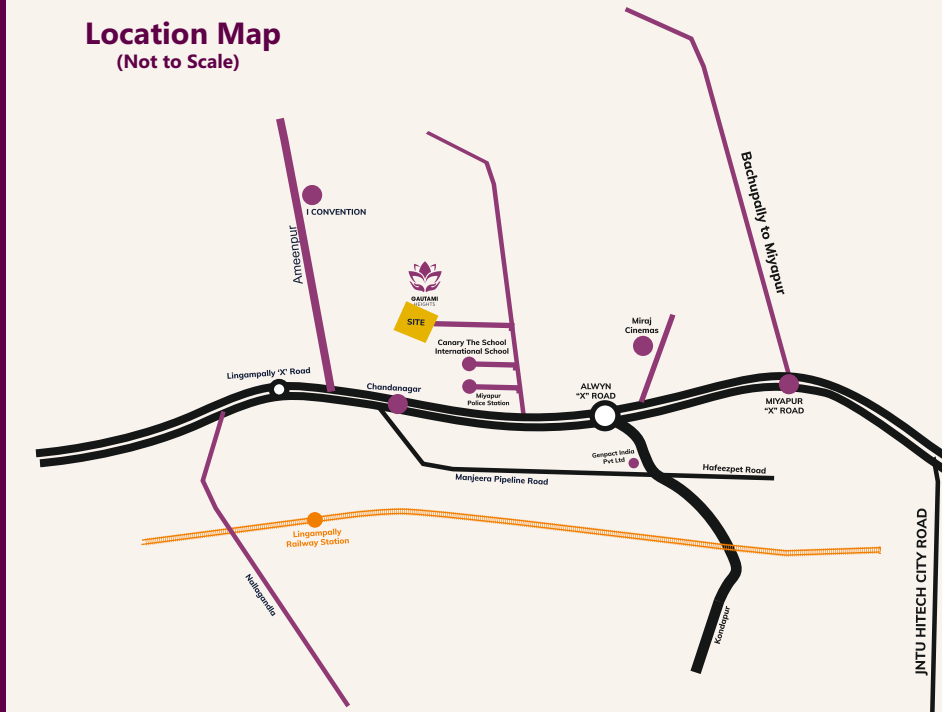


## Location Highlights

- + BHEL
- + Lingam Pally Railway Station
- + Miyapur Metro Station
- + Canary The School International School
- + Hotel Sitara Grand
- + SLG Hospitals Miyapur
- + IT/Financial hubs such as Gachibowli/Hitech City
- + GSM Mall, Manjeera Mall, Forum Sujana Mall
- + Healthcare, shopping and recreation assured at nearby locales like Kukatpally / Madhapur / Hitech City

Immerse yourself in the Rich, celebratory Lifestyle of the city's Most happening locale, Miyapur Places at your disposal - All the great shopping, Entertainment and Corporate treasure of it, Educational institutes as Well as healthcare.

### Location Map (Not to Scale)



SLG Hospital



Canary International School



Miyapur Metro



Miraj Cinemas



Forum Sujana Mall



Hotel Sitara Grand

Promoters



Anuhar Homes Pvt. Ltd.

H.No. 8-2-293/82/225/A, Rd No. 18,  
Jubilee Hills, Hyderabad, Telangana - 500033.

[www.anuhar.com](http://www.anuhar.com)

A Member of



Note : This document has been produced by the developer for advertising and general information only. The developer and its project team do not guarantee, warrant or represent that the information contained within this document is correct. Any interested party should undertake their own enquiries as to the accuracy of this information. The developer excludes unequivocally all inferred and implied terms, conditions and warranties arising out of this document and excludes all liability for loss or damage arising there from. Images shown are Artist Impression and shown for illustrative purposes only. The plans are based on the current design for this development. Changes will undoubtedly be made through development, and dimensions, fittings, finishes and specifications are subject to change without notice. The location of all architectural features on the façade including vertical panels and fins will vary on each type plan and level. Their location on the marketing material is indicative of the design intent. The information contained herein is believed to be current, but is not guaranteed. Prospective purchasers must rely on their own enquiries. Furniture, interior designing & wardrobes are not included. This document is for guidance and does not constitute an offer of contract.



**GAUTAMI  
HEIGHTS**

RERA NO. P02400006604

Elevate your life to a place where luxury meets serenity





Welcome to **Gautami Heights**, a luxurious residential enclave in the heart of Miyapur. Designed to cater to the needs and aspirations of modern urban living, Gautami Heights offers an exceptional lifestyle for those who seek comfort, convenience, and a touch of elegance.

## Effortlessly Designed


Immerse yourself in a world of comfort, convenience, and sophistication.


Come and join us as we redefine urban living in Miyapur.

 **59%**  
Open Space

 **10 Floors**  
**243 Units**

 Unit Area in sft  
**1190 sft - 1968 sft**

 **2, 2.5 & 3**  
BHK

 **3 Level**  
Car Parking



## Safe and Secure

Your safety and convenience are our top priorities at Gautami Heights. With round-the-clock security measures, you can enjoy peace of mind knowing that you and your loved ones are protected.



## Amenities and Specifications

### UNPARALLELED ATTRACTIONS ELEVATING QUALITY OF Living

At Gautami Heights, we understand the importance of leisure and well-being. Our meticulously planned amenities cater to your every need, providing a holistic living experience

#### Amenities:

- Multipurpose hall
- Gym
- Guest Room
- Indoor Games
- Maintenance Office
- Kids Pool
- Home Theatre
- Place for Spa/Salon
- Place for Library

#### Community Features:

- CCTV surveillance
- Sewage treatment plant
- Rainwater harvesting
- Grand main entrance gate
- Landscape green zone
- 24/7 security
- 3-level parking
- Car parking
- Domestic Water Available through a Water Softening Plant
- Walking Areas
- Generator backup for common areas except for ACs and Geysers

