

AADITRI'S  
**EMPIRE** EXTN  
LUXURIOUS LIFESTYLE

ORR Exit No. 2, Kollur Gate, Velimela, Hyderabad

PROJECT MANUAL

HIGHRISE LUXURY GATED COMMUNITY



  
**AADITRI**  
 CREATING LIFESTYLE

## COMPANY PROFILE / ABOUT US

Aaditri's Housing (P) Limited - A Young, Dynamic and Vibrant professionally managed progressive first generation Enterprise Company headquartered with its corporate office: @Jubilee Hills Check Post Metro station, Hyderabad Telangana.

Regd. office & Regional Offices: @Guntur, Tirupati & Visakhapatnam, Andhra Pradesh.

Aaditri was established in the year 2016 formerly Aaditri infra fastest growing & trusted reality developer in the states of Andhra Pradesh & Telangana.

With a vision for new product development making continuous availability of new products & timely launch in the states of Andhra Pradesh & Telangana @:-

- ◆ AP CAPITAL REGION
- ◆ AP SMART CITIES - VISAKHAPATNAM & TIRUPATI
- ◆ HI - TECH METRO CYBER CITY, HYDERABAD, TELANGANA

At present the company has operational ongoing projects worth 250 crores in AP state & is poised for expansion to major cities in AP & Telangana to cater to the living needs of the middle & upper middle class of the society which fits into the taste, choice & budget @affordable price!

Aaditri enjoys very good brand equity & brand pull in the markets & industry known for its assured deliverables & commitments to the customer!!!

Aaditri's presence of more than a decade or 10 years of rich blend of experience & technical expertise in development & construction of hi - quality residential apartments / flats across AP & TS for the middle & upper middle class strata of the society had achieved great laurels in the market & industry for itself known for its timely delivery of happy homes & qualitative construction over the years, creating landmarks in the society & setting competitive living standards & lifestyles in the industry with its continuous improvements of quality control & audit, processes. Methods, innovation & scientifically & ergonomically designed living spaces with 100% vaastu for the modern day living lifestyles & trends from cross - cultural societal economies.

AADITRI Is well equipped & updated with the requisite human & financial resources to face the challenges of markets & industry who with positive attitude towards emerging construction technologies & state - of - art technological products dumped in the country deploys qualified, trained, skilled technical manpower & specialist to execute the specialized works by adopting latest work methodologies from time to time & complete the whole gamut of the demands of the housing project with perfection, precision, accuracy & speed in order to deliver the project On time!! In time!! Always to our esteemed customers leading to optimum customer satisfaction!!

### OBJECTIVES

- ◆ To create quality smart homes for the smart people in the smart society!
- ◆ To identify potential land bank for expansion & locate our housing projects to new geographical cities / towns in the states of Andhra Pradesh & Telangana.
- ◆ To achieve optimum customer satisfaction & become a trendy market leader in the market & industry!
- ◆ To update operate & recruit more than 10000 IBA network globally & achieve the muscle & core strength of marketer!!

### VISION

- ◆ To create maximum living spaces @competitive, reasonable & affordable price for our customers.
- ◆ To create gated community living styles & culture prevailing in metro cities to major cities / towns in Andhra Pradesh & Telangana within the reach & budget of middle class & upper middle class strata of the society - 10000 luxury living spaces by 2025!!

### MISSION

- ◆ To innovate, create, build a world class Techno - Savvy real - estate developer company with highest standards of professionalism, ethics & customer services.

AADITR'S

# EMPIRE EXTN

LUXURIOUS LIFESTYLE



# PROJECT HIGHLIGHTS

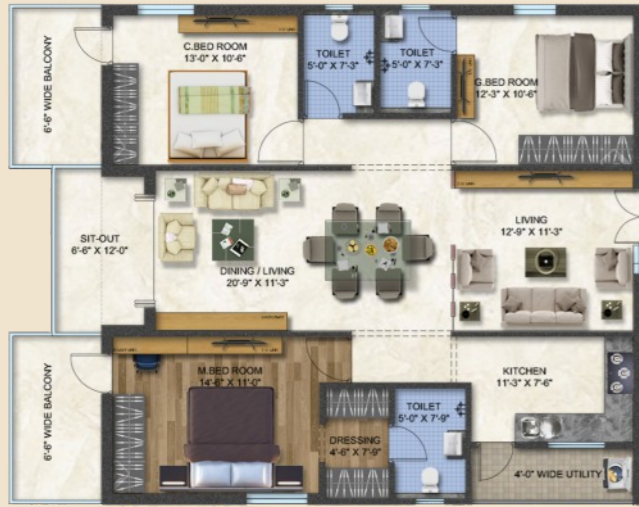
- HMDA Approved Project
- C+Stilt+17 Floors Hi Rise Towers
- 15 Acres
- 9 Towers
- 2244 Units
- Luxury Construction
- 2&3 BHK Apartments
- No Common Walls
- Vaasthu Compliant
- Extensive Landscaping
- Jogging Track
- Centralized Piped Gas System
- Grand Entry & Exit Lounge
- Tot Lots & Children Play Areas
- Exclusive Clubhouse
- Sufficient Ground Water Supply
- RO Water Plant
- Sewage Treatment Plant STP
- 24-hr Security With Intercom
- RFID Access
- Stilt + Cellular Car Parking
- Visitor's Car Parking
- Generator Back-up
- Rain Water Harvesting Pits
- 24hr Power Backup



AADITRI'S  
**EMPIRE** EXTN  
 LUXURIOUS LIFESTYLE

TYPICAL FLOOR PLAN 

AREA AFFECTED UNDER ROAD WIDENING - 41'



**TYPE 1** 1900 SFT 3BHK EAST FACING



**TYPE 2** 1900 SFT 3BHK WEST FACING



**TYPE 3** 1665 SFT 3BHK EAST FACING



**TYPE 4** 1665 SFT 3BHK WEST FACING



**TYPE 5** 1250 SFT 2BHK EAST FACING



**TYPE 6** 1250 SFT 2BHK WEST FACING



**TYPE 7** 1250 SFT 2BHK EAST FACING



**TYPE 8** 1250 SFT 2BHK EAST FACING



**TYPE 9** 1250 SFT 2BHK EAST FACING



**TYPE 10** 1250 SFT 2BHK WEST FACING



**TYPE 11** 1250 SFT 2BHK EAST FACING



**TYPE 12** 1250 SFT 2BHK WEST FACING



AADITRI'S  
**EMPIRE** EXTN  
 LUXURIOUS LIFESTYLE

## CLUBHOUSE AMENITIES

- Swimming Pool
- Gymnasium Fully Equipped
- Play Area
- Broadband Internet & Wi-Fi
- Multi-Purpose Function Hall attached with Lawns
- Library | Bank/ATM Provision | Badminton Court
- Intercom
- Tennis Court
- Basket Ball Court
- Amphitheater
- Cricket Net Practice
- Sufficient Guest Rooms
- Travel Desk
- Laundry
- Car Wash
- Senior Citizen Room
- Aerobic Hall | Provisional Store
- Restaurant Provision
- Shuttle Bus Service
- Clinic Provision
- CC Cameras
- Open Air Theatre
- Crèche
- MeeSeva
- Milk Booth
- Common Toilets
- Skating Area
- Drivers Rest Room with Toilet
- Spa - Saloon,
- Beauty parlor,
- Sauna & Steam Bath,
- Massage Rooms
- Indoor Games-
- Chess, Caroms, TT, Billiards,
- Squash Court
- Landscaping- Flower Garden,
- Gazebos,
- Water bodes with Fountain,
- Seating Area,
- Lawn Areas

AADITRI'S

# EMPIRE EXTN

LUXURIOUS LIFESTYLE

AADITRI'S EMPIRE – A TRUE GATED COMMUNITY, a mix of both 2 & 3 BHK Luxury Apartment complexes & Villas - Duplex and Triplex villas is strategically located in the lush greens growth clusters nearby to the growth corridor positioned on both sides of the Hyderabad-Kollur Gate (ORR - Exit : 2) in Velimela Village in a very Serene and Tranquil surroundings with vibrant views for relaxed, Comfort and Cozy living in style!

5 min drive from Kollur – ORR Exit Jn.

10 min drive from IT Major WIPRO junction.

15 min drive from Gachibowli / IT Financial District.

15 min drive from Lingampalli MMTS Railway Stations .

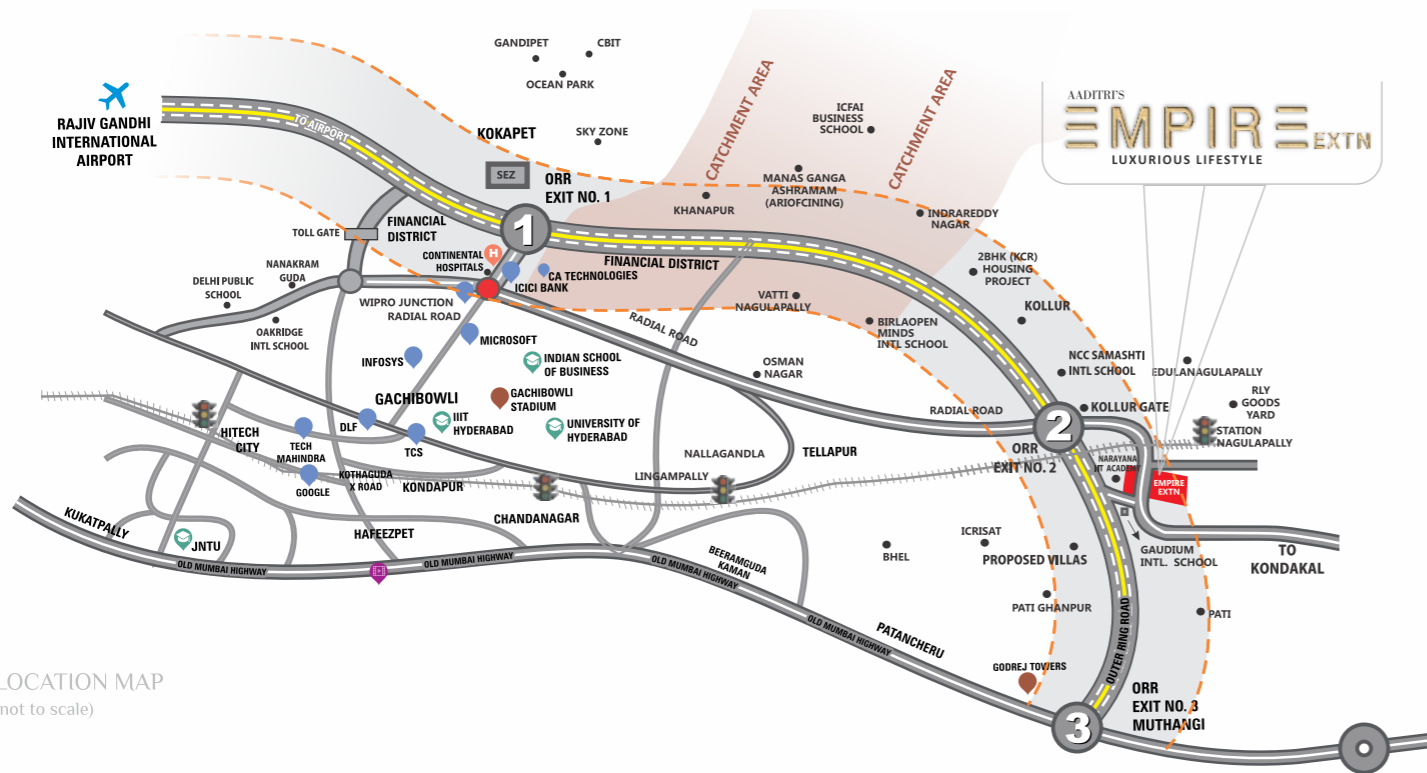
30 min drive from Rajiv Gandhi International Airport.

- W A Fast track speedy access to world class health Care Centers & Entertainment hubs, educational institutions are all conveniently located in the vicinity!
- W With the Rapid Development happening in the vicinity upcoming neighborhood supported by other lifestyle conveniences.
- W Aaditri's EMPIRE is planned to be self - sufficient Gated Community fully furnished with Ultra - modern World Class Amenities within the community to provide a stress free life to its Residents!
- W It's a Great Luxury, Comforts & Conveniences all within this Marvelous Gated community! Only for the Luxury Privileged Few!!
- W This property is poised for high Appreciation over the coming years due to the Planned tremendous economic activity bustling in the region - Growth Centres & Clusters to spur all - round growth exponentially!
- W Another Posh - A Trendy Upcoming Neighborhood; Truly Cozy!!

Exit  
No:2



Location



LOCATION MAP  
(not to scale)

**RESIDENTIAL SPACE ZONE-1**

- + Growth Corridor
- + Radial Road From Wipro
- + ORR Access
- + IT-Financial District
- + Corporate Industries
- + International Schools
- + Sez's

**CONNECTIVITY**

- + Airport Via ORR in 30 Minutes
- + Lingampalli Mmts Railway Station in 15 Minutes
- + Gachibowli Junction in 15 Minutes
- + Wipro Junction In 10 Minutes via Radial Road
- + Nagulapalli Mmts Station in 5 Minutes

**IT PROXIMITY:**

- + Wipro Campus
- + Microsoft Campus
- + Infosys Campus Capgemini
- + TCS, Wave Rock
- + CA Technologies
- + Amazon
- + Franklin Templeton
- + Honeywell
- + Several Others
- + ICICI Bank Towers
- + Wells Fargo

**EDUCATIONAL INSTITUTIONS:**

- + Delhi Public School
- + Oakridge School
- + Open Minds - A Birla School
- + Manthan International School
- + Sancta Maria International School
- + NCC-Samashti International School
- + The Gaudium School
- + ISB Campus
- + Institute Of Life Sciences
- + Indus International School
- + Global Indian International School
- + ICFAI Business School
- + CBIT
- + MGIT
- + Telangana Model School

**HEALTH AND HOSPITALITY:**

- + Citizens Multispecialty Hospital
- + Continental Multispecialty Hospitals
- + Sheraton Hyderabad Hotel
- + Holiday Inn Express & Suites Care, Apollo, KIMS

**DEVELOPING FAST IN CLOSE PROXIMITY:**

- + American Consulate 11 Acres Campus
- + 100 Acres Wipro
- + Tata Institute Of Fundamental Research (TIFR) 209 Acres
- + Data Recovery Site For BSE
- + Google Campus In Kokapet
- + Tellapur Techno City 100 Acres
- + ITIR Area -Tellapur-Financial District Area
- + Hyudai Mobis Campus

**ENTERTAINMENT PROXIMITY:**

- + Songs of Earth
- + Lahari Resorts
- + Treasure Island & Golkonda Resort & Spa
- + Ocean Park
- + Wonderla
- + Sky Zone ORO Sports Village





Builders & Developers



*Corporate Office :*

HYDERABAD

AADITRI HOUSING PVT. LTD.  
Pravritti Bhavan, H.No: 8-2-293/82/A/233,  
2,3&4<sup>th</sup> Floor, Rd. No: 36, Beside Jubilee Hills  
Checkpoint Metro Station, Jubilee Hills,  
Hyderabad-500 033.

*Registered Office :*

GUNTUR

AADITRI HOUSING PVT. LTD.  
D.No. 3-28-18/48/96, 4/1,  
Brindavan Gardens, Guntur,  
Andhra Pradesh - 522 006.

*Regional Office :*

TIRUPATI

AADITRI HOUSING PVT LTD  
19-3-13(M), Hero Showroom Upstairs,  
3rd Floor, Renigunta Road,  
Tirupathi - 517 501.

*Regional Office :*

VISAKHAPATNAM

AADITRI HOUSING PVT. LTD.  
Chandu Kanthas Bhushanam Towers,  
D.No. 49-54-11/A, B.S Layout, Green Park-  
Colony, Seethammadara, Visakhapatnam - 530013.

Email: [info@aaditrihousing.com](mailto:info@aaditrihousing.com)

[www.aaditrihousing.com](http://www.aaditrihousing.com)

Tollfree Number: **1800 313 4929**

'Honours'



A Member of



National  
Real Estate  
Development  
Council



Indian  
Green  
Building  
Council

Rating



Architects



Architects | Interior Designers | Engineers Consultancy

Structural Engineers



NOTE : This brochure is only a conceptual presentation of the project and not a legal offering. The promoters reserve the right to make changes in plans, specifications and elevation as deemed fit.