

## OUR ICONIC PROJECTS



Suchir Capital, 50-B, Journalist Colony, Jubilee Hills, Hyderabad, Telangana - 500 096

Tel. +91 91181 77777

[www.thetalesofgreek.in](http://www.thetalesofgreek.in) | [www.suchirindia.in](http://www.suchirindia.in)

LIKE, SHARE, AND FOLLOW US ON



The information provided in the brochure (including any images, brochures, plans, etc.) is for informational purposes only and you shall not rely or depend on such information for the purposes of making any purchase in any of our projects. The information in the brochure does not constitute an invitation to purchase, advertisement, marketing or offer for sale of any of the units in our projects.



suchirindia's  
**THE TALES  
OF GREEK**  
— Luxury Suites & Studio Apartments —

At Satamrai Village, Near Shamshabad

**COME HOME  
TO AFFORDABLE  
LUXURY**

RERA No.  
P02400002725



**SUCHIRINDIA  
A LEGACY  
BUILT ON TRUST**

Suchirindia has been shaping the country's real estate market since 2005, delivering iconic projects in the residential and leisure sectors across the region and beyond. With proven competencies in real estate, infrastructure, leisure and hospitality, Suchirindia shapes new lifestyles with a focus on design excellence, quality building materials and timely delivery.

### A PERFECTIONIST'S DREAM

*The Tales of Greek is unique in design aesthetics, providing an aspirational lifestyle within a thriving community. These incredible vistas of iconic structures and their infinite potential for experiences come together at The Tales of Greek Luxury suites and studio apartments in Downtown Hyderabad to elevate your lifestyle. A place where you can escape the city, where your mind can wander endlessly, where you and your loved ones can bond uninterruptedly, a place where you feel like you belong, where you are limitless.*

*When we put pen to paper, we are not just designing, we are looking at something greater. Built with precision for comfort. Built for dreams. These residences combine art, spectacular views, luxury, style, convenience and beyond.*

*I consider it to be a privilege to build a home for you. Each one of us at Suchirindia, commits to always deliver our best so that your home offers you all that you've dreamed about and more.*

**Lion Dr. Kiron**  
CEO, Suchirindia Group

**THERE IS A  
PLACE WHERE  
YOUR MOST EXTENSIVE  
TASTES ARE PERFECTLY  
PUT TOGETHER**

The Tales of Greek is an sophisticated gated community with luxurious suites and studio apartments located in Satamrai, Bangalore Highway, Hyderabad offering thoughtfully curated amenities for upscaled community living.

The Tales of Greek is conceptualized and built to amalgamate a residential lifestyle to serve new working experiences from home, comfortably accommodate your flexible working hours with fewer distractions and an improved work-life balance in a heavenly setting.



suchirindia's  
**THE TALES  
OF GREEK**

Luxury Suites & Studio Apartments  
At Satamrai Village, Near Shamshabad

**RATINGS**



**OUR AFFILIATIONS PARTNERS & ARCHITECTS**



**PMC**



**LOANS APPROVED BY**

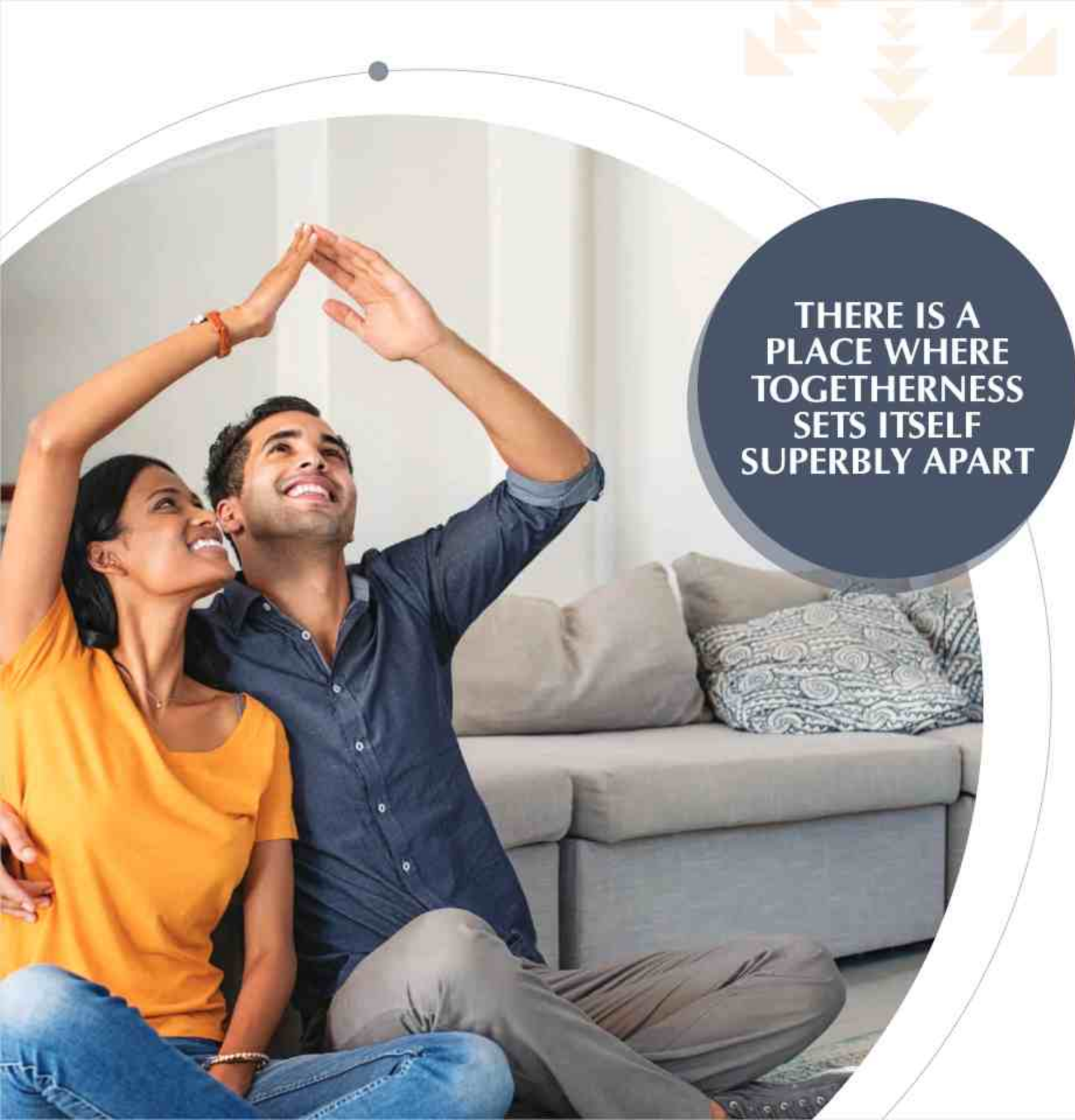


HMDA No. 036813/SMD/R1/U6/HMDA/23062020



RERA No. P02400002725

Ancient Greek architects used an ideal proportion of mathematics in the design of the Greek architecture columns, also known as the Golden Mean or Golden Ratio. This is similar to the one's followed in ancient Indian temple architecture.



THERE IS A  
PLACE WHERE  
TOGETHERNESS  
SETS ITSELF  
SUPERBLY APART

The Tales of Greek is perfectly placed in Satamrai for work, live and play. The 2 Bedroom luxury suites and studio apartments are suited for both individuals and families. The new home-office building is fitted with fully-appointed workspace lounges on every alternate floor and modern amenities and inviting shared spaces that facilitate a stronger sense of community.



## MASTER PLAN

The Tales of Greek's iconic form and luxuriously crafted homes qualify for a residence of global standards. It's modeled on and thereby recreates for its owner, the urban aesthetic of Greek-style living.

### PROJECT HIGHLIGHTS



India's first-ever trade-marked project design and concept



Greek-inspired building design housing 328 flats in 2.45 acres with iconic tower structures



Smartly designed two-bedroom homes of 800 sqft., 880 sqft., 890 sqft., 905 sqft., 931 sqft. and 945 sqft. with East, West and North facings



Another first in its class - is a fully equipped business lounge to make 'work-from-home' a suitable option



High-end amenities for the first time in India's 'affordable' viable luxury segment



Most of the Greek temples have known to have been oriented astronomically. This is believed to be true in case of the construction of Indian temples as well.



**INDIA'S FIRST  
GATED COMMUNITY  
WITH  
WORK-FROM-HOME  
CONVENIENCE**

Feel like a boss. Work-From-Home was never this convenient.

Airconditioned lounges at every alternate level with high speed wifi, private corners, snack bars and coffee machines with easy access that makes work enjoyable and seamless.

---

**THERE IS A PLACE WHERE  
WORK AND LIFE SHARE  
THE SAME PASSION**

The Tales of Greek services new working experiences from home by catering to your flexible working hours with fewer distractions and an improved work-life balance with exclusive private corners and comfortable work desks designated on every alternate floor to make work and life seamless.



**A DREAM NEIGHBOURHOOD THAT IS SET TO ELEVATE LIFE**



The Tales of Greek stands tall on the Bengaluru Highway, towering above its prestigious neighbourhood. The arrival of Shamshabad Airport and Outer Ring Road has forever changed the topography of Hyderabad. Clusters of hi-end residential towers, gated communities, SEZs, IT companies, schools, malls, colleges, hospitals, super markets are built around Shamshabad. The Tales of Greek at Satamrai is strategically located just a few minutes from the National Highway No.7 and Railway Track and the proposed MMTS Rail linkage that not only adds to the mobility but will surely skyrocket the appraise the value of the property.

**LOCATION ADVANTAGE**

- 

5 Kms from Outer Ring Road (ORR)
- 

10 Kms from International Airport
- 

1 Km from Hospitals
- 


1 Km from Super Markets
- 

2 Kms from Schools & Colleges
- 


1 Km from Ashram
- 

1 Km from Temple / Church / Mosque
- 

3 Kms from Theatres
- 

1 Km from Convention Centres
- 

Higher Rate of Return
- 

Tallest Towers in the Neighbourhood
- 

1 Km to MMTS

The greek's largely stone and high-quality white marble, both on the mainland and islands. Moreover, limestone was readily available and easily workable. High-quality potter's clay was used not only for pottery vessels but also for roof tiles (Terracotta) and architectural decoration.



APOLLO

**THE CLUBHOUSE IS AN EXTRAORDINARY LARGE EXPANSE OF REFINED LEISURE THAT TRULY SETS A PRECEDENT**



- STILT FLOOR
- Swimming Pool
  - Snack Bar
  - Changing Rooms



- Spa & Salon
- Doctor Clinic
- Creche



- Gym
- Indoor Games



- Departmental Store
- Party Hall
- Reception Space



City houses were built adjacent to each other and were grouped into small blocks by narrow streets. These houses were inward-facing, with major openings looking onto the central courtyard, rather than the street.




THERE IS A PLACE  
WHERE YOUR  
ECLECTIC  
TASTES COEXIST  
DELICIOUSLY



A 24/7 restaurant to satisfy those hunger cravings that can occur at any time, to a grocery store that's self-sufficient to provide for your daily needs, to a doctor's clinic alongside a 24/7 pharmacy, conveniently placed to take care of the health and well-being of every resident. The Tales of Greek hosts an exclusive selection of distinguished offerings within your community.



 During the late 5th and 4th centuries BC, town planning came into the scenario too. Towns were laid out with a regular grid of paved streets. Water for household use was collected in a public fountain.





**THERE IS A PLACE  
WHERE TIME AND  
PLEASURE CREATE  
SOUVENIRS OF  
MEMORIES**

At The Tales of Greek, life is enriched in moments. The vast plethora of thoughtfully put together amenities cater to every lifestyle and resident, so that no one is left behind. The swimming pool to a fully equipped gymnasium, yoga and meditation rooms to walking/jogging tracks, kids' play areas to sand pits, banquet halls to and lavish green lawns with panoramic views, every element here is placed to make life vibrant and joyful.

**COMMUNITY FACILITIES**

-  CLUB MEMBERSHIP
-  RESTAURANT
-  INDOOR GAMES AREA
-  CONVENIENT STORE
-  SWIMMING POOL
-  PUBLIC ADDRESS SYSTEM
-  SUPERMARKET
-  SPA AND SALOON
-  PARKS
-  MEDICAL ROOM
-  MEDITATION HALL
-  WATER FOUNTAINS
-  GYMNASIUM
-  YOGA ROOM
-  TENNIS COURT
-  COFFEE SHOP
-  EXERCISE HALL
-  PET PARKS
-  ATM

**AMENITIES WITHIN THE SUITES & STUDIOS**

-  INTERCOM
-  WIFI
-  MY GATE APP

**COMPATIBLE  
CUSTOM  
HOME  
AUTOMATION  
SOLUTION**  
THAT ELEVATES  
YOUR LIFESTYLE  
AND DELIVERS  
UNPARALLELED  
CONVENIENCE  
AT ALL TIME.

**LIVE SMARTER**

Imagine a home that not only satisfies your every need, but also your choicest desires. The Tales of Greek brings alive the concept of Smart Homes at your finger tip. Here, you live in the Future!

**Control Everything at Your Fingertips**  
Turn on your lights, play your favourite music or change your room temperature, at the tap of your smartphone.

**Run Personalized Schedules**  
Have your coffee ready when you wake up. Automatically turn everything off when you leave for work. Experience true intelligence.

**Talk to Your Home or Make it Talk**  
Simply talk to your virtual voice assistant, and ask it to do anything for you- be it ordering groceries to solving a math problem.

**It's technology for living.**



 Large ancient Greek towns also had a "Palaestra" or a gymnasium. It acted as a social centre for male citizens which included spectator areas, baths, toilets, and club rooms.




**THERE IS A PLACE  
WHERE SPORT  
AND SMILES  
COMPLIMENT  
YOUR  
WELL-BEING**



A clubhouse that is at the centre of everyone's well-being; be it fitness enthusiasts, walkers, joggers, sport affectionados, yoga and meditation believers and more. This spacious and verdant clubhouse complete with state-of-the-art fitness amenities, and an exquisitely designed multi-purpose room caters to your social needs to entertain friends and family as well as for your official meetings.

Relax in the pool beside an expansive deck that opens onto fabulous views. Make precious memories with your little ones at the children's play area and entertain friends at the dedicated party hall and barbeque stations.



 The houses were called "Oikos". The earliest houses were simple structures of 2 rooms, with an open porch, called "Pronaos". Tiles were used as the roofing material and Mosaic floors in luxury homes, which demonstrated the Classical style.



suchirindia's  
**THE TALES  
OF GREEK**  
— Luxury Suites & Studio Apartments —  
At Sunnari Village, Near Shamshabad

  
**Aerial View**

RERA No.  
P02400002725

HMDA No.  
036813/SMD/R1/U6/HMDA/23062020

## ACROPOLIS COURT

- 01 CIRCULAR NODE
- 02 WATER FEATURE WITH FLOATING LANTER
- 03 DRIVEWAY
- 04 FOOTPATH/ JOGGING TRACK
- 05 HIGH LAWN CLUSTER
- 06 FEATURE PAVING
- 07 AMPHITHEATER STEPS
- 08 STAGE
- 09 FLOWER BEDS
- 10 SCULPTURE
- 11 SITTING COURT
- 12 SHALLOW WATER BODY
- 13 SENIOR CITIZEN SITTING
- 14 PATHWAY
- 15 FLOATING GAZEBO WITH STONES
- 16 OPEN LAWN
- 17 FREE STANDING PILLARS
- 18 JALI SCREENING
- 19 SITTING LAWN



## KRATOS COURT

- 01 DRIVEWAY WITH FOOTPATH
- 02 ENTRANCE FLOORING
- 03 SITTING COURT
- 04 GRASS MOUND
- 05 OPEN LAWN
- 06 EPDM FLOORING
- 07 SOLID SITTING
- 08 SHUTTLE COURT
- 09 DENSE PLANTING
- 10 SHALLOW WATER WALK
- 11 STATUE
- 12 CLIMBING WALL
- 13 SAND PIT

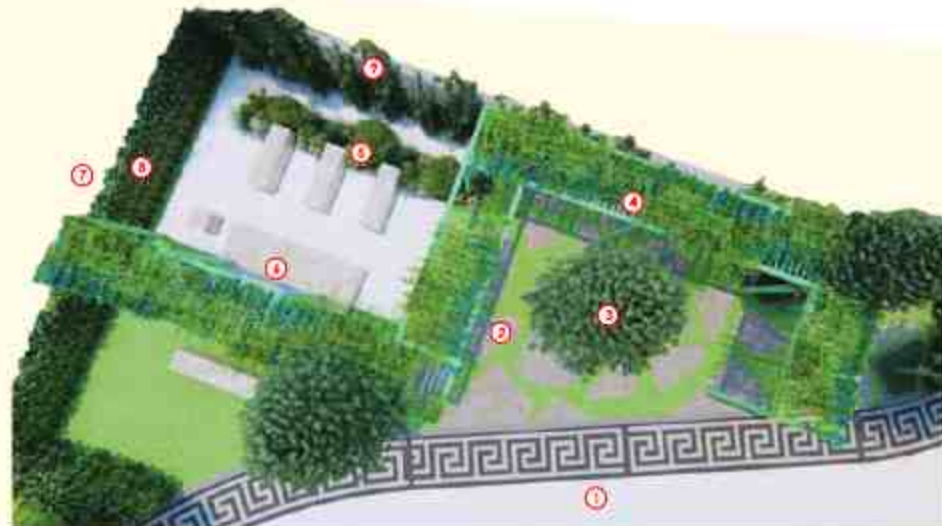


## PARTHENON COURT

- 01 DRIVEWAY WITH FOOTPATH
- 02 SITTING COURT
- 03 FLOATING PLANTER
- 04 SHALLOW LILY POND
- 05 ROCKS & BOULDERS WITH PERGOLA ABOVE
- 06 MULTICOLOR WALKWAY
- 07 WOODEN PAVING
- 08 JALI SCREENING
- 09 ACCENT TREE
- 10 PLANTER BOX

## AQUILA COURT

- 01 DRIVEWAY WITH FOOTPATH
- 02 STEPPING STONES WITH GRASS JOINT
- 03 LOW HEIGHT TREE PLANTER
- 04 PERGOLA
- 05 LOW HEIGHT PLANTER WITH SEAT
- 06 PETS STAGE
- 07 SERVICES
- 08 BUFFER HEDGE PLANTING FOR SERVICES
- 09 COMPOUND WALL



LANDSCAPE MARVEL



## PARTHENON COURT POOL

- 01 SWIMMING POOL
- 02 BABY POOL
- 03 POOL STEPS
- 04 OUTDOOR SHOWER
- 05 SITTING COURT
- 06 PLANTER
- 07 CAFETERIA
- 08 ARTIFICIAL LAWN
- 09 POOL DECK
- 10 SCREEN WALL
- 11 WALKWAY
- 12 POTTED PLANTS
- 13 HOP-SCOTCH
- 14 BOARD GAMES
- 15 GIANT CHESS COURT



**MORE ROOM  
FOR HAPPINESS**





**ROOM TO  
REDISCOVER  
YOURSELF**



**TYPE - A  
EAST FACING  
890 SFT.**

**1st, 2nd Floor Plans**

Size	Floor	No. of Units
890	2	2

**Typical Floor Plans**

Size	Floor	No. of Units
890	7	7



**TYPE - B  
EAST FACING  
931 SFT.**

**1st, 2nd, 3rd Floor Plans**

Size	Floor	No. of Units
931	3	3

**Typical Floor Plans**

Size	Floor	No. of Units
931	7	7



**TYPE - A  
WEST FACING  
890 SFT.**

**1st, 2nd, 3rd Floor Plans**

Size	Floor	No. of Units
890	3	9

**Typical Floor Plans**

Size	Floor	No. of Units
890	7	21



**TYPE - B  
WEST FACING  
931 SFT.**

**1st, 2nd, 3rd Floor Plans**

Size	Floor	No. of Units
931	3	6

**Typical Floor Plans**

Size	Floor	No. of Units
931	7	14

**TYPE - B**  
**NORTH FACING**  
**931 SFT.**

**1st, 2nd, 3rd Floor Plans**

Size	Floor	No. of Units
931	3	12

**Typical Floor Plans**

Size	Floor	No. of Units
931	7	63



**TYPE - C**  
**WEST FACING**  
**945 SFT.**

**1st, 2nd, 3rd Floor Plans**

Size	Floor	No. of Units
945	3	15

**Typical Floor Plans**

Size	Floor	No. of Units
945	7	49



**TYPE - C**  
**EAST FACING**  
**945 SFT.**

**1st, 2nd, 3rd Floor Plans**

Size	Floor	No. of Units
945	3	21

**Typical Floor Plans**

Size	Floor	No. of Units
945	7	63



**TYPE - D**  
**WEST FACING**  
**931 SFT.**

**2nd, 3rd Floor Plans**

Size	Floor	No. of Units
931	2	2

**Typical Floor Plans**

Size	Floor	No. of Units
931	7	7



**TYPE - E  
EAST FACING  
800 SFT.**

**1st, 2nd, 3rd Floor Plans**

Size	Floor	No. of Units
800	3	12

**Typical Floor Plans**

Size	Floor	No. of Units
800	7	7



**TYPE - G  
EAST FACING  
880 SFT.**

**1st Floor Plan**

Size	Floor	No. of Units
880	1	1



**TYPE - F  
WEST FACING  
905 SFT.**

**1st Floor Plan**

Size	Floor	No. of Units
905	1	1

**SPATIALSCAPING A MASTERPIECE**

We are on with the grandeur becoming a fast reality spread across The Tales of Greek.

- 01 SITE ENTRANCE/ EXIT
- 02 SECURITY ROOM
- 03 ISLAND WITH DENSE VEGETATION
- 04 OUTDOOR FITNESS STATION
- 05 CIRCULAR DROP-OFF WITH FREE STANDING PILLARS
- 06 PERIPHERAL VEGETATION
- 07 FEATURE PAVING WITH ABSTRACT SHAPE PLANTER
- 08 PETS PARK
- 09 PALM COURT
- 10 DRIVEWAY WITH FOOTPATH/ JOGGING TRACK
- 11 KIDS PARK
- 12 CIRCULAR NODE WITH WATER FEATURE
- 13 MULTIPURPOSE COURT
- 14 WATER COURT
- 15 SHADED PLAY COURTS
- 16 PARKING PLAZA



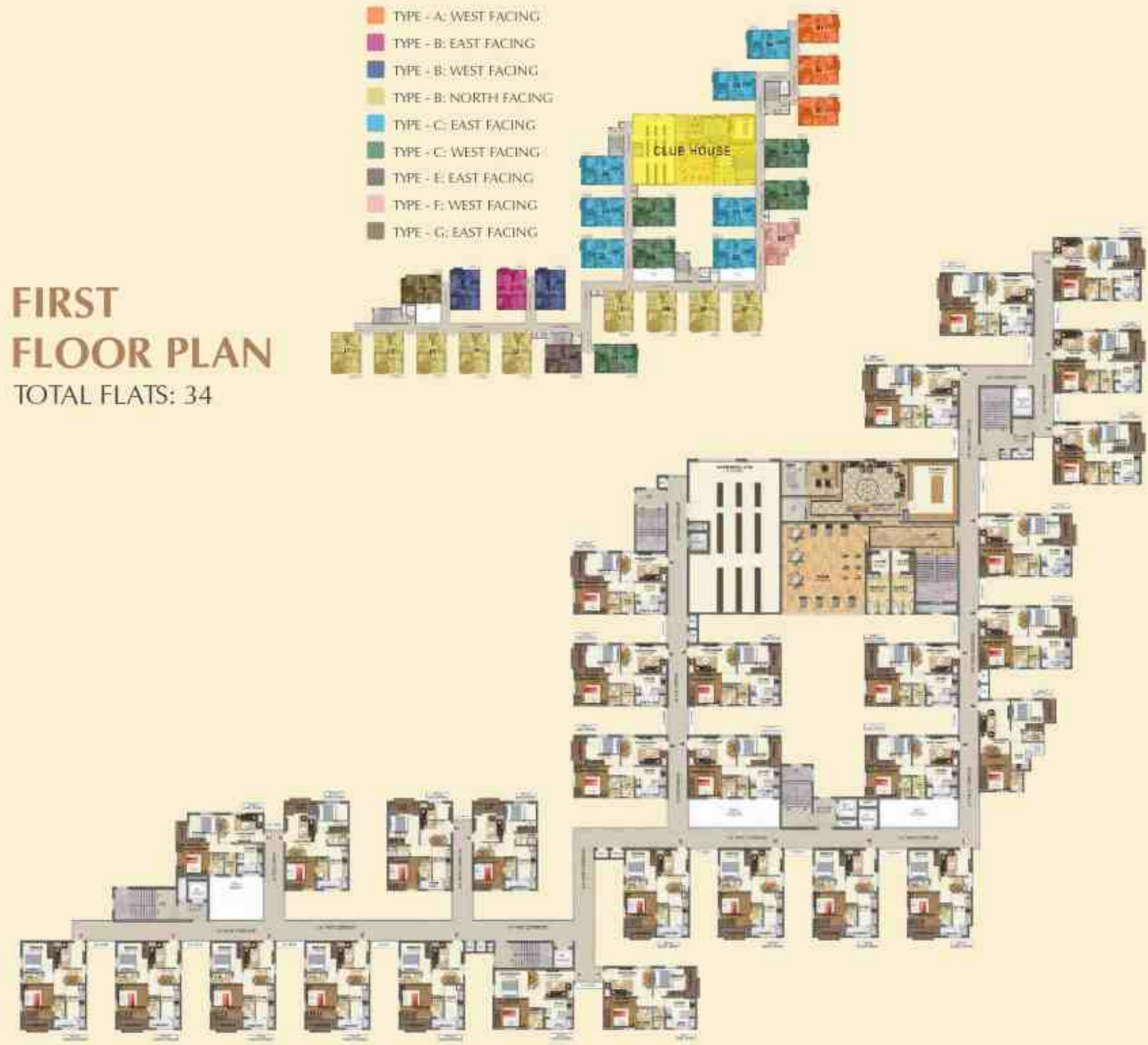
## TYPICAL FLOOR PLAN

TOTAL FLATS: 34



## FIRST FLOOR PLAN

TOTAL FLATS: 34



## SECOND FLOOR PLAN

TOTAL FLATS: 34



## THIRD FLOOR PLAN

TOTAL FLATS: 34






  
 an egyptian resort
   
 near Kotur, on Bangalore Highway
   

  
 A Designer's Dream
   
 New Developments in the heart of Nature



## A HOME ALONG SIDE TWO HOLIDAY HOMES

It couldn't have gotten any better. A home at The Tales of Greek comes along with memberships to two unique resorts...Honey Berg Resort & Papyrus Port Resort. Both getaways are conveniently located within reach so that you make the most of life.

## A FEW REWARDS AND RECOGNITIONS



Recognised as India's Most Admirable Brand 2019 by The Brand Story



Recognised as Asia's Greatest Brands - 2017 by Asia One Organization in Singapore



Recognised as Asia's Greatest Leaders - 2017 by Asia One Organization in Singapore



Recognised as The Most Dynamic Businessmen by The Bizz Awards



Recognised as Emerging Developer 2018 - 19 by Common Floor



Recognised as Pride of Nation Award by Shri. Rajnath Singh



Premium Lifestyle Project by Times Realty Icon - 2018



Premium Lifestyle Project by Times Realty Icon - 2018



Best Eco Friendly Developer by Times Business Awards 2020



Brand Imperial Awards 2021



Real Estate Most Enterprising CEO of the Year by National Awards for Excellence in Real Estate



Real Estate Most Enterprising CEO of the Year by National Awards for Excellence in Real Estate



Recognised as Emerging Developer, 2018-19 by Common Floor



Recognised as Extraordinaire Brand 2018-2019 by Brand Vision Summit