



# THE BOAT CLUB

Water Front Villas







SRIAS LIFE SPACES  
**ALTERNATE  
LIVING**



SITE Google overlay

**Medchal**  
Site Area: 25 Acres

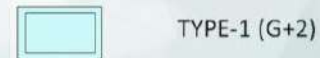






# Master Plan

## VILLA TYPES :



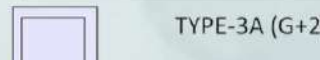
TYPE-1 (G+2)

TYPICAL PLOT SIZE: 20M X 12.5M  
TYPICAL PLOT AREA: 250.0 SQM / 298.99 SQ.YD



TYPE-2 (G+2)

TYPICAL PLOT SIZE: 21M X 13.5M  
TYPICAL PLOT AREA: 283.5 SQM / 339.0 SQ.YD



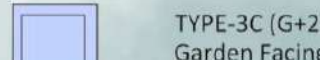
TYPE-3A (G+2)

TYPICAL PLOT SIZE: 20M X 20M  
TYPICAL PLOT AREA: 400.0 SQM / 478.0 SQ.YD



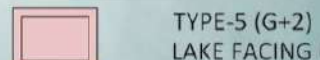
TYPE-3B (G+2)  
(ODD PLOTS)

TYPICAL PLOT SIZE: 21M X 20M  
TYPICAL PLOT AREA: 420.0 SQM / 502.0 SQ.YD



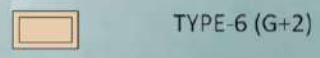
TYPE-3C (G+2)  
Garden Facing

TYPICAL PLOT SIZE: 20M X 20M  
TYPICAL PLOT AREA: 400.0 SQM / 478.0 SQ.YD



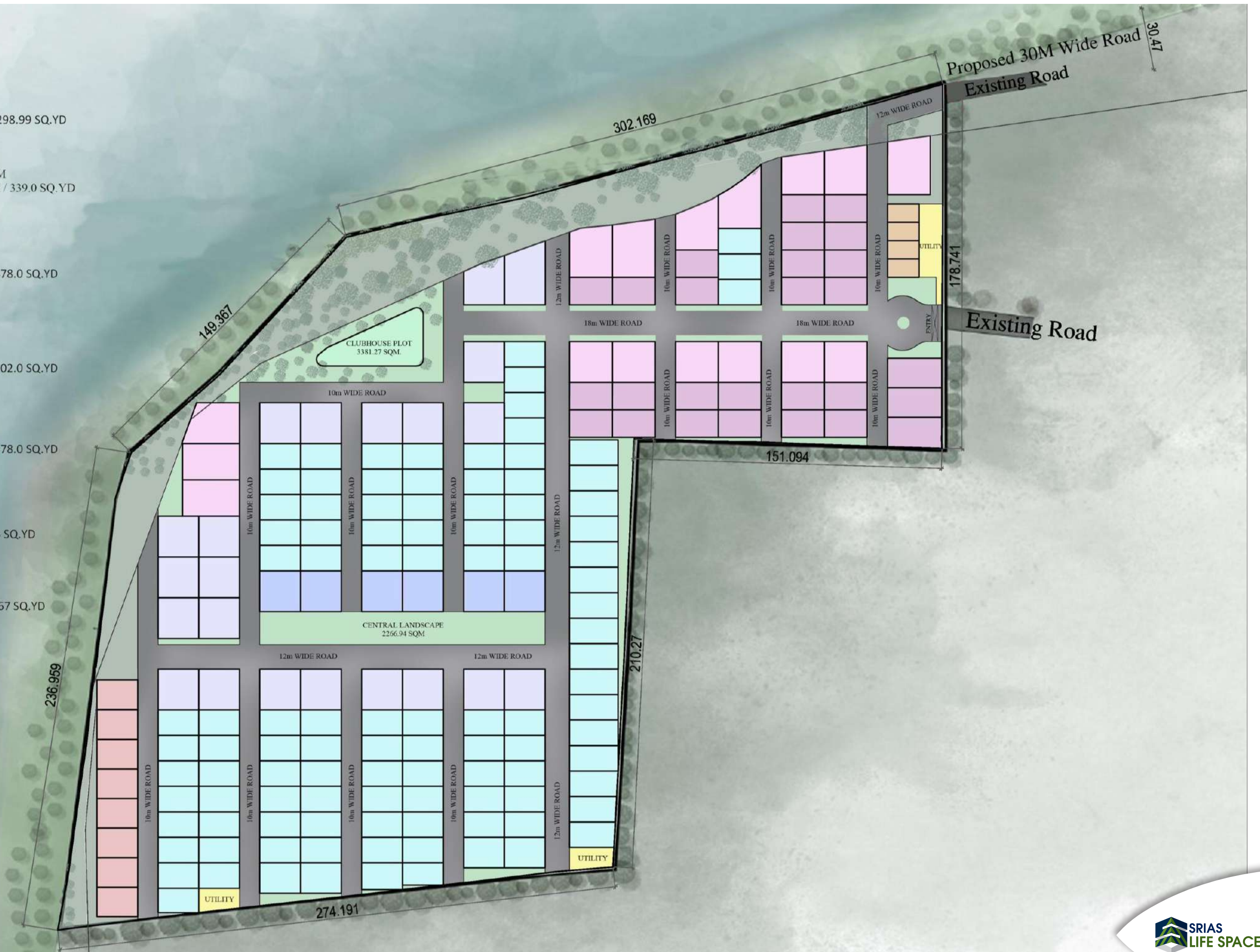
TYPE-5 (G+2)  
LAKE FACING (EF)

TYPICAL PLOT SIZE: 20M X 14.5M  
TYPICAL PLOT AREA: 290 SQM / 345 SQ.YD



TYPE-6 (G+2)

TYPICAL PLOT SIZE: 15.5M X 9.0M  
TYPICAL PLOT AREA: 139.5 SQM / 167 SQ.YD







THE BOAT CLUB  
Water Front Villas

# LIFE BEYOND BUSY CITY

Living On Medchal Lake Side







THE BOAT CLUB  
Water Front Villas

# LIFE BEYOND BUSY CITY

Living On Medchal Lake Side







THE BOAT CLUB  
Water Front Villas

# LIFE BEYOND BUSY CITY

Living On Medchal Lake Side







THE BOAT CLUB

Water Front Villas

# LIFE BEYOND BUSY CITY

Living On Medchal Lake Side



View of Lake from Terrace







THE BOAT CLUB  
Water Front Villas

## UNIT TYPES

300 Sq.Yd. East Facing Villas

340 Sq.Yd. Villas

345 Sq.Yd. Lake View Villas

478 Sq. Yd. Lake View Villas

500 Sq.Yd. Lake View Villas





THE BOAT CLUB  
Water Front Villas

## TYPE 1

300 Sq. Yd. Villa - East Facing





THE BOAT CLUB  
Water Front Villas

## TYPE 1

300 Sq. Yd. Villa

East Facing

Plot Size – 20m x 12.5m







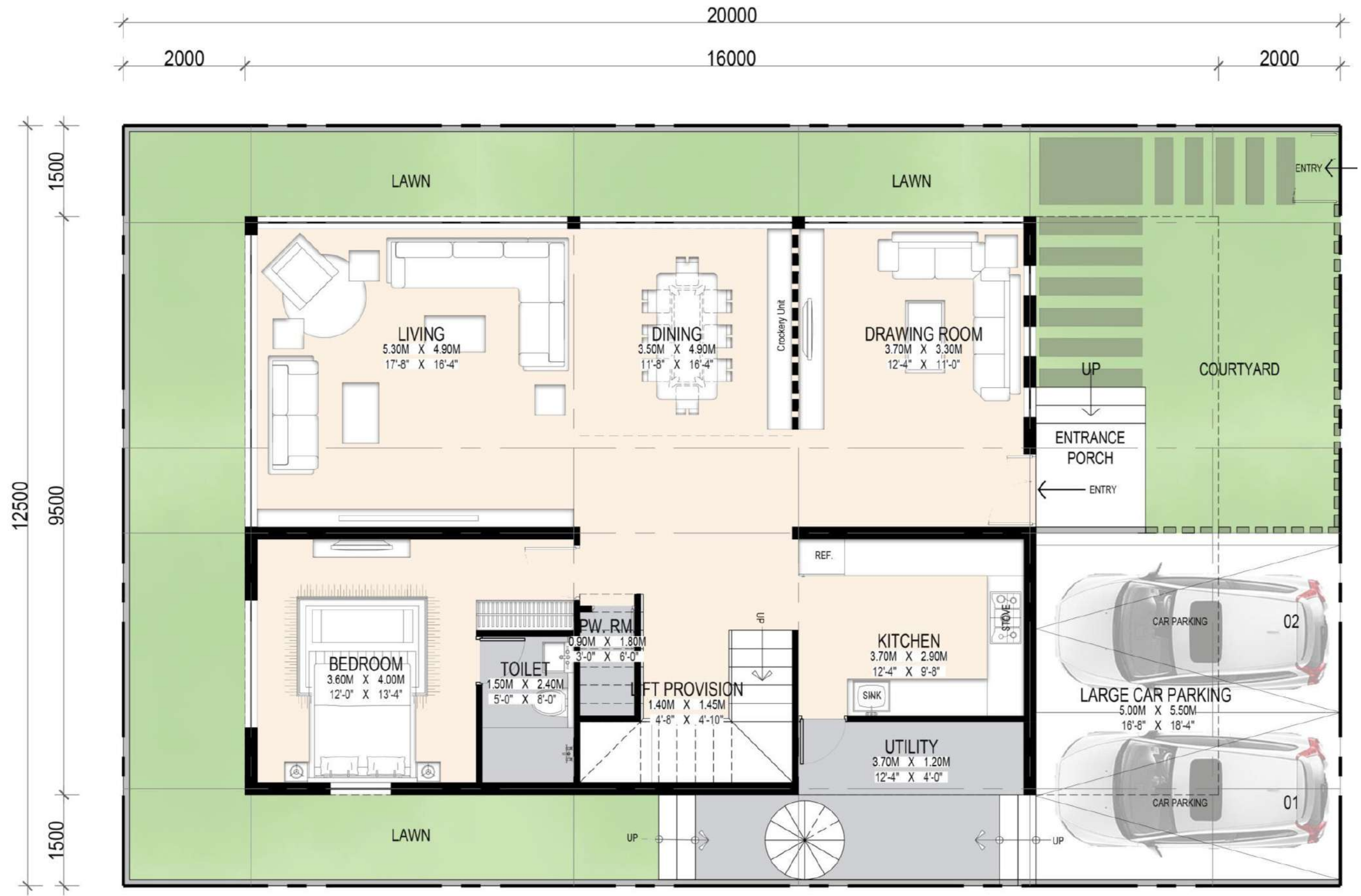
THE BOAT CLUB  
Water Front Villas

## East Facing Villa - 300 Sq. Yd.



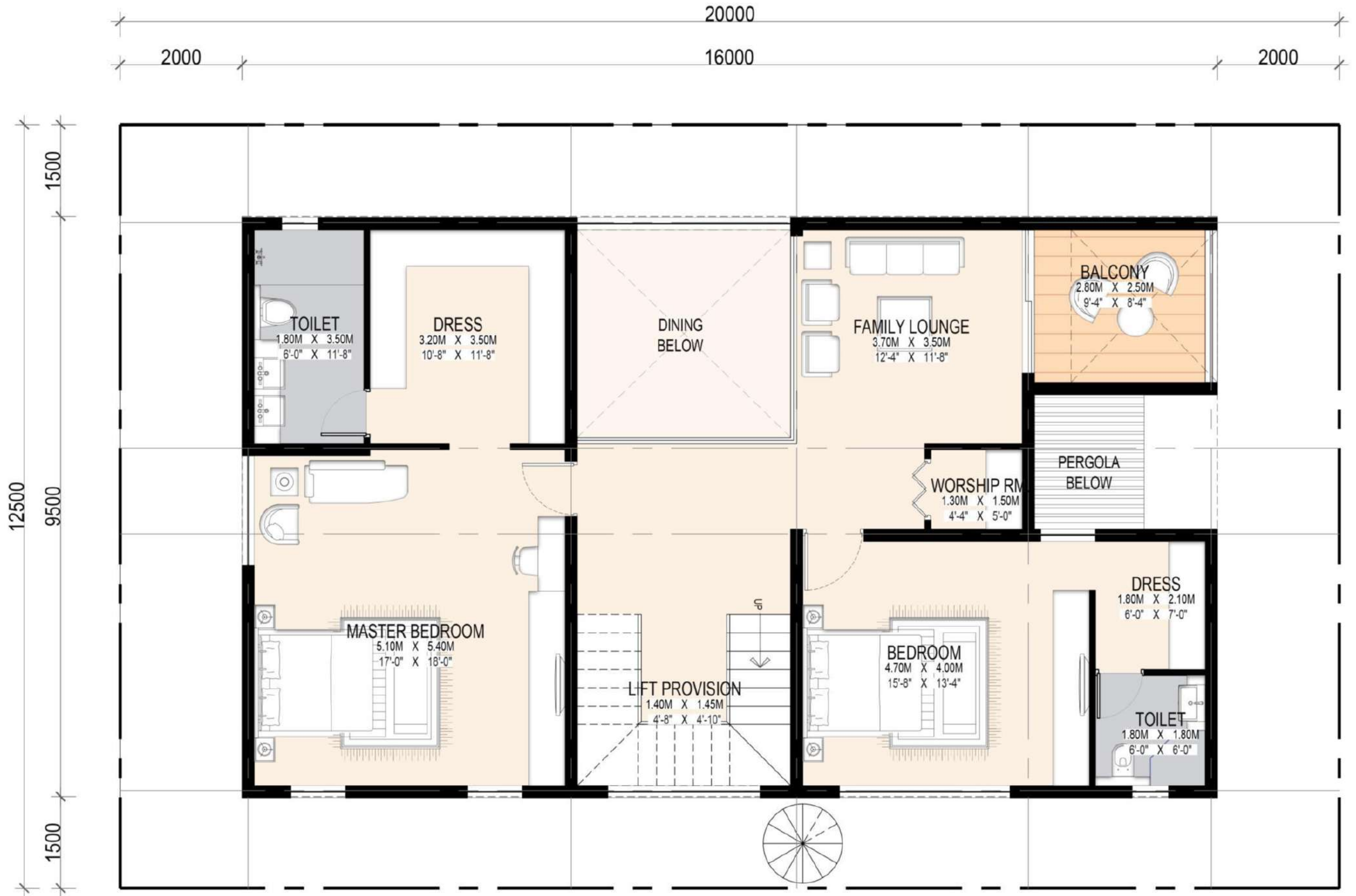


# 300 Sq.Yd. Villas Ground Floor





# 300 Sq.Yd. Villas First Floor





# 300 Sq.Yd. Villas Second Floor







THE BOAT CLUB  
Water Front Villas

## TYPE 1

300 Sq. Yd. Villa - West Facing





THE BOAT CLUB

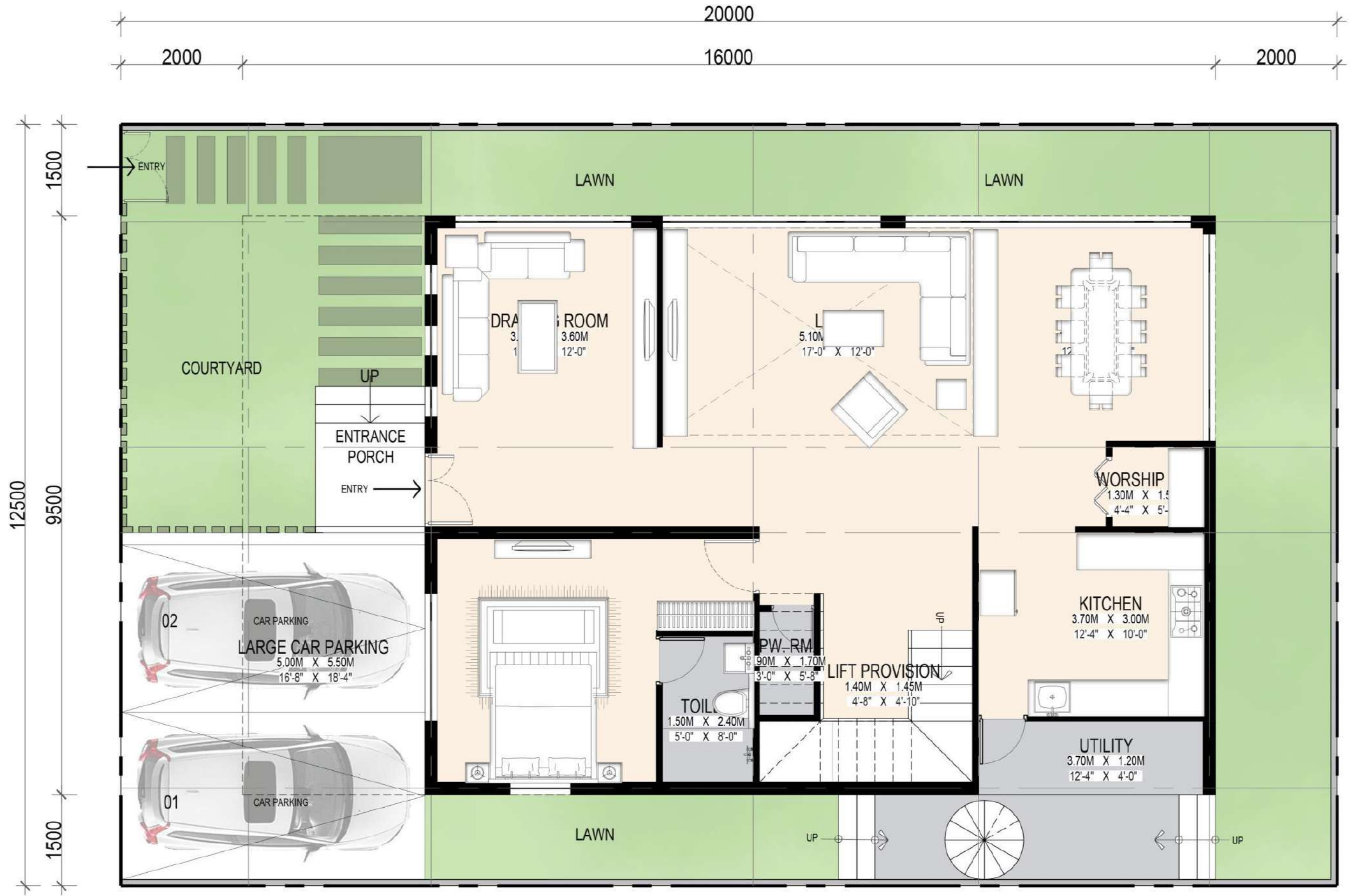
Water Front Villas

## West Facing Villa - 300 Sq. Yd.



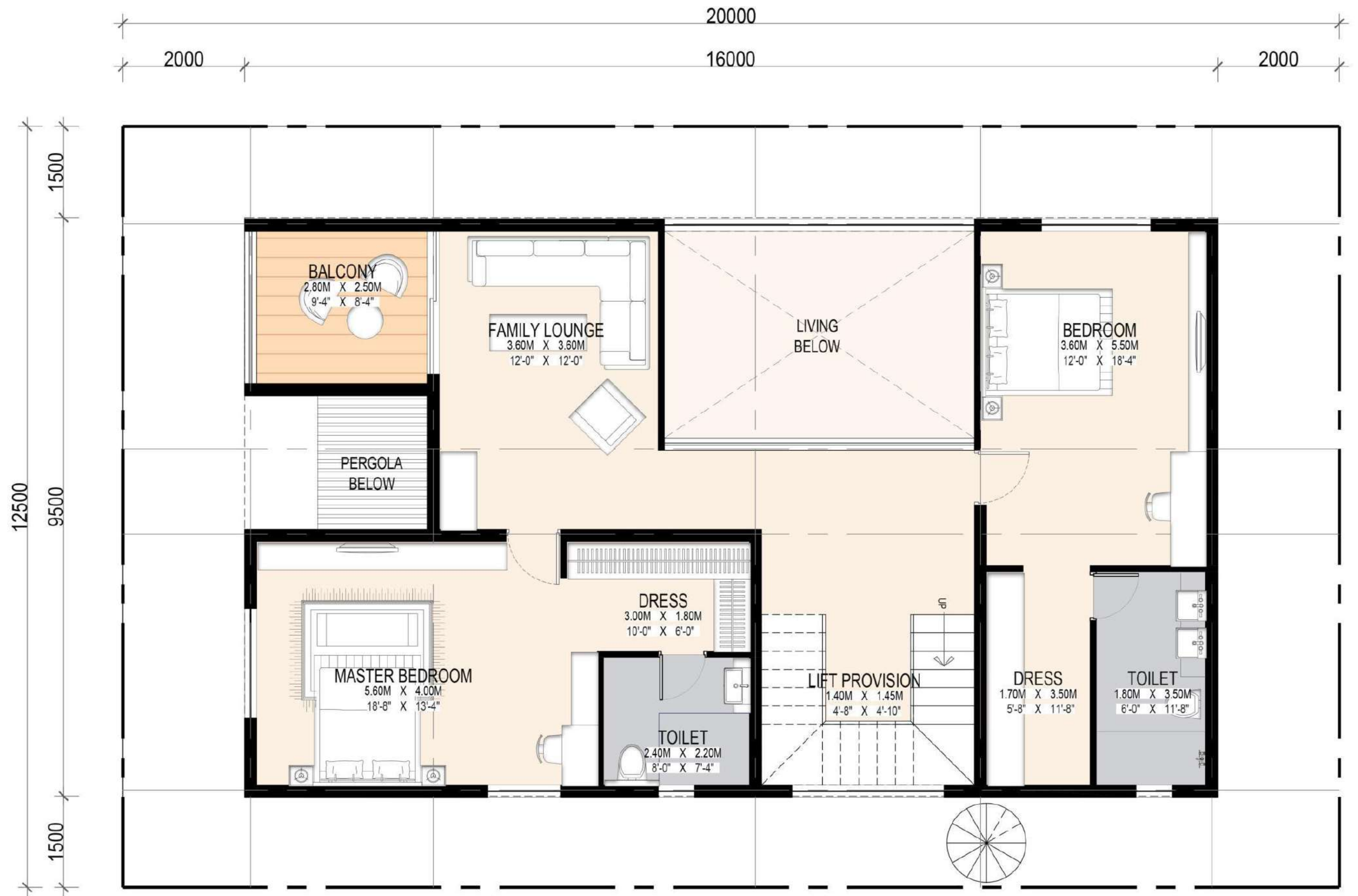


# 300 Sq.Yd. Villas Ground Floor



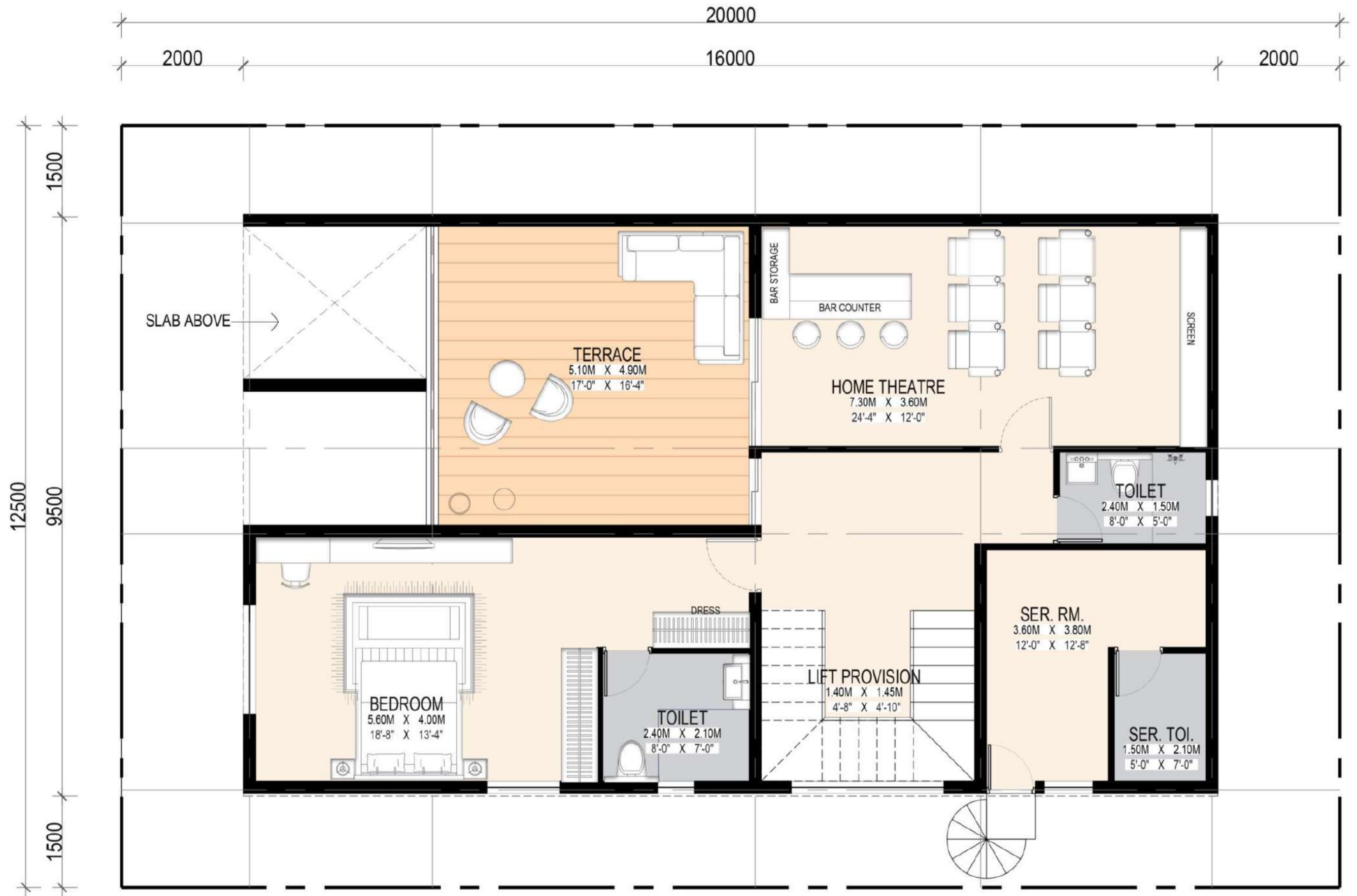


# 300 Sq.Yd. Villas First Floor





# 300 Sq.Yd. Villas Second Floor







THE BOAT CLUB  
Water Front Villas

## TYPE 2

340 Sq. Yd. Villa - East Facing

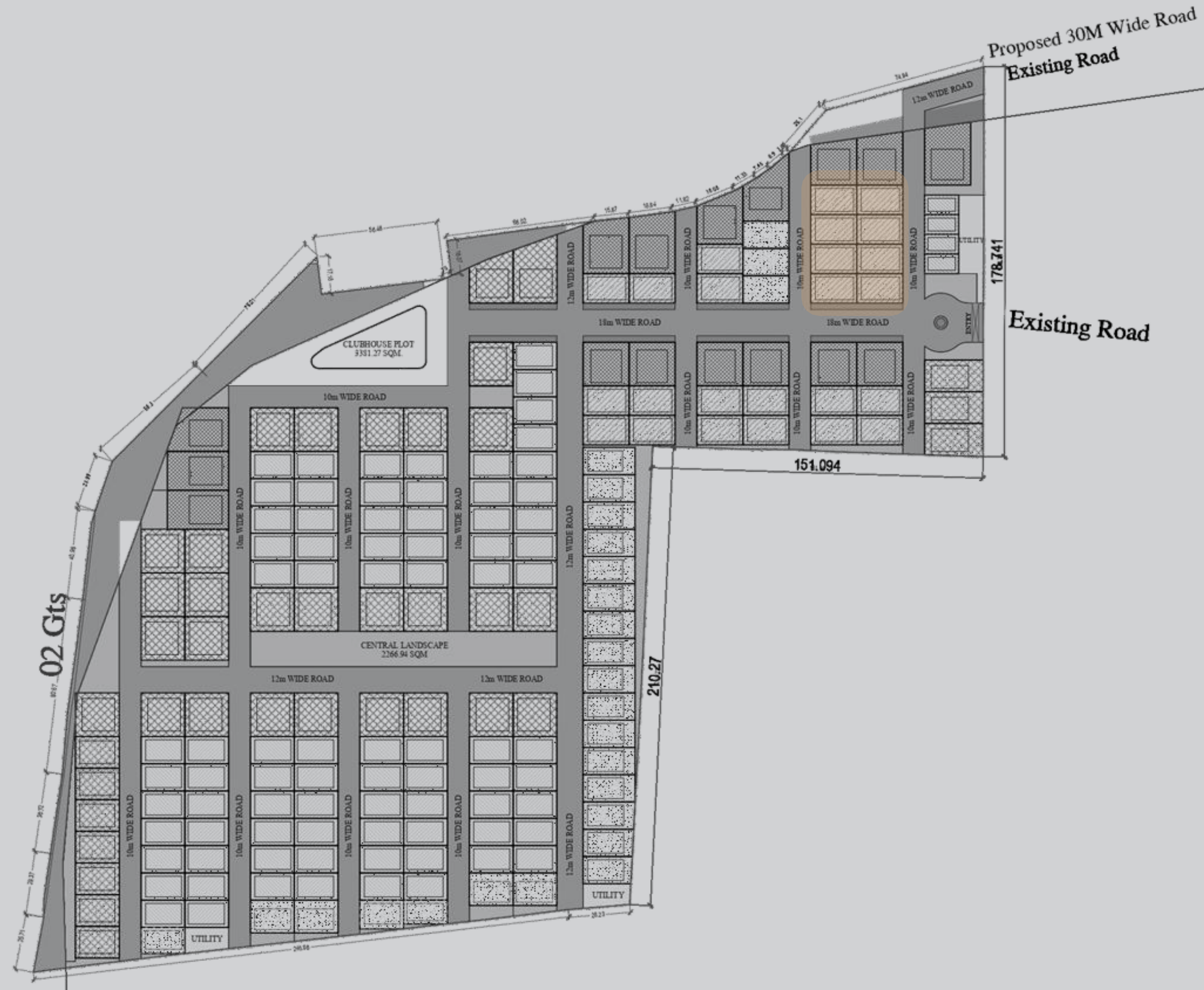




THE BOAT CLUB  
Water Front Villas

# TYPE 2

340 Sq. Yd. Villa







THE BOAT CLUB  
Water Front Villas

## East Facing Villa - 340 Sq. Yd.







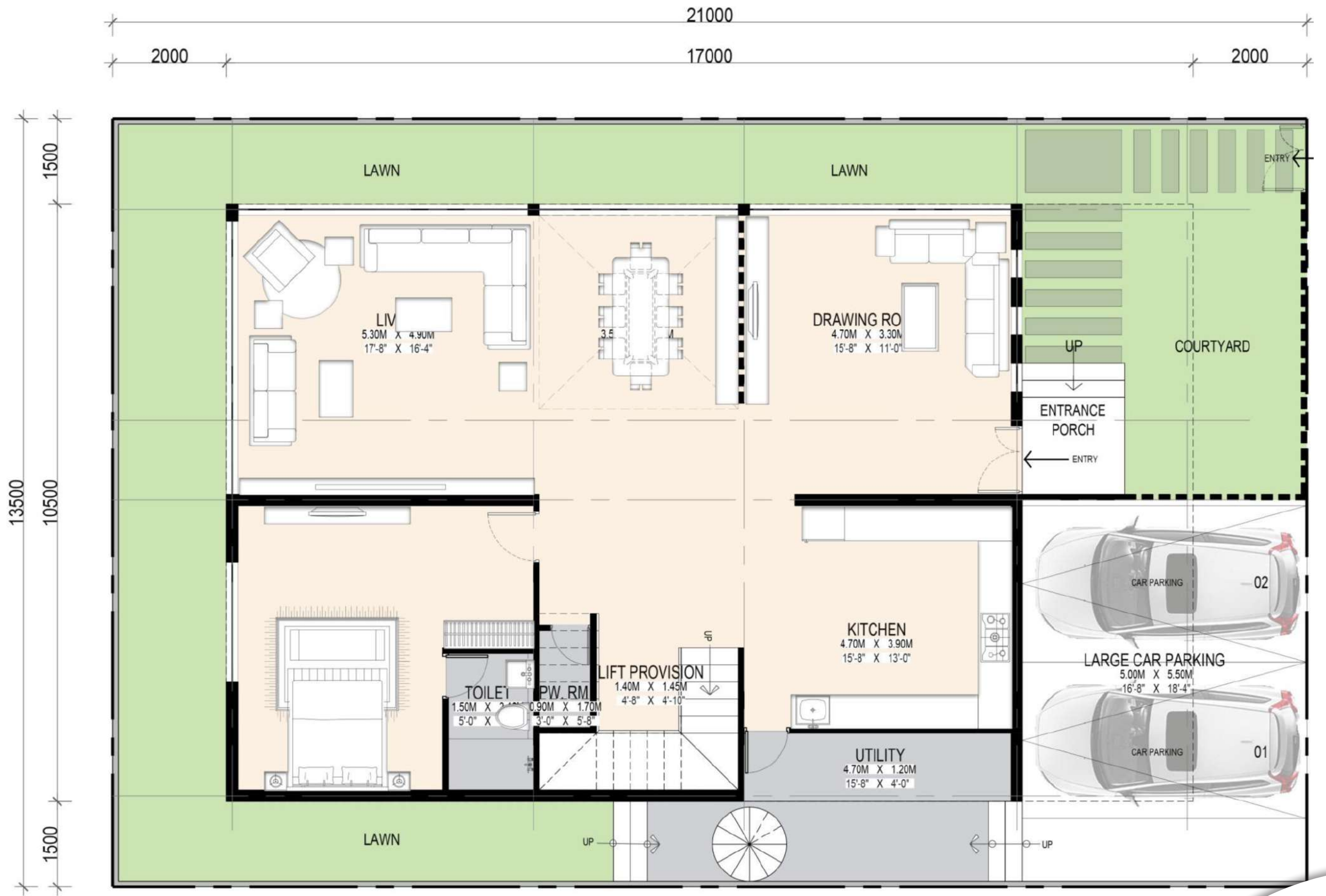
THE BOAT CLUB  
Water Front Villas

## West Facing Villa - 340 Sq. Yd.



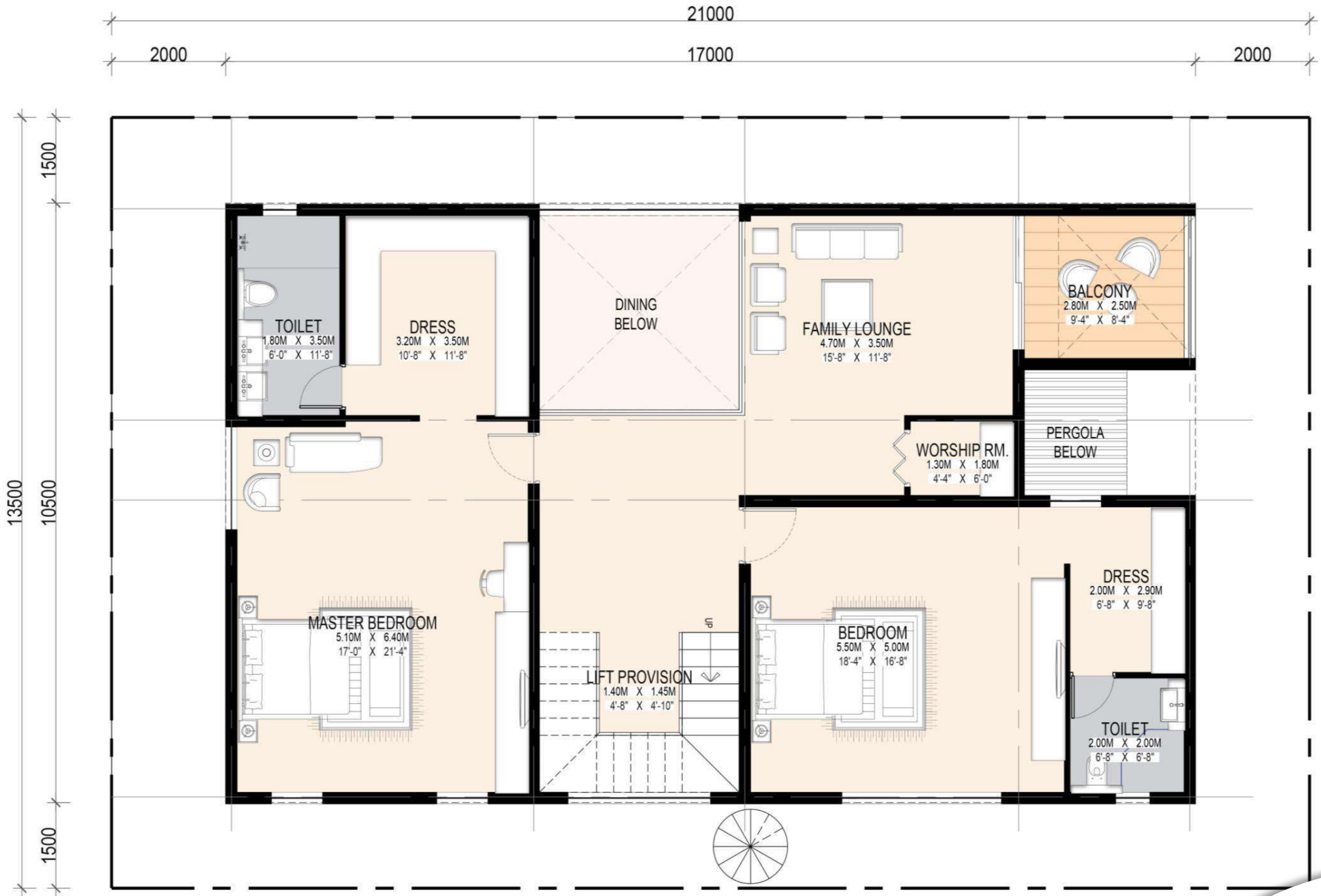


# 340 Sq.Yd. Villas Ground Floor



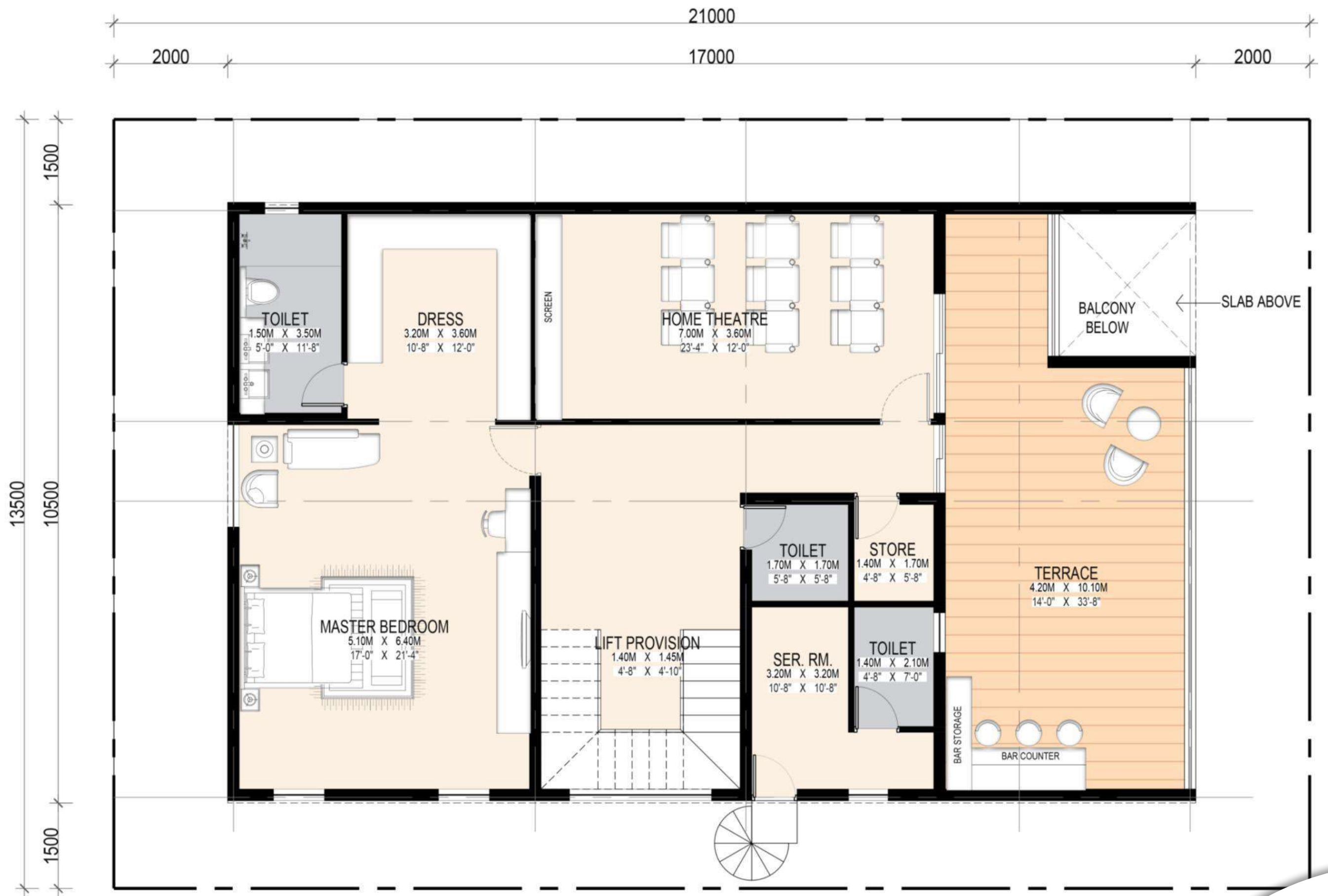


# 340 Sq.Yd. Villas First Floor





# 340 Sq.Yd. Villas Second Floor







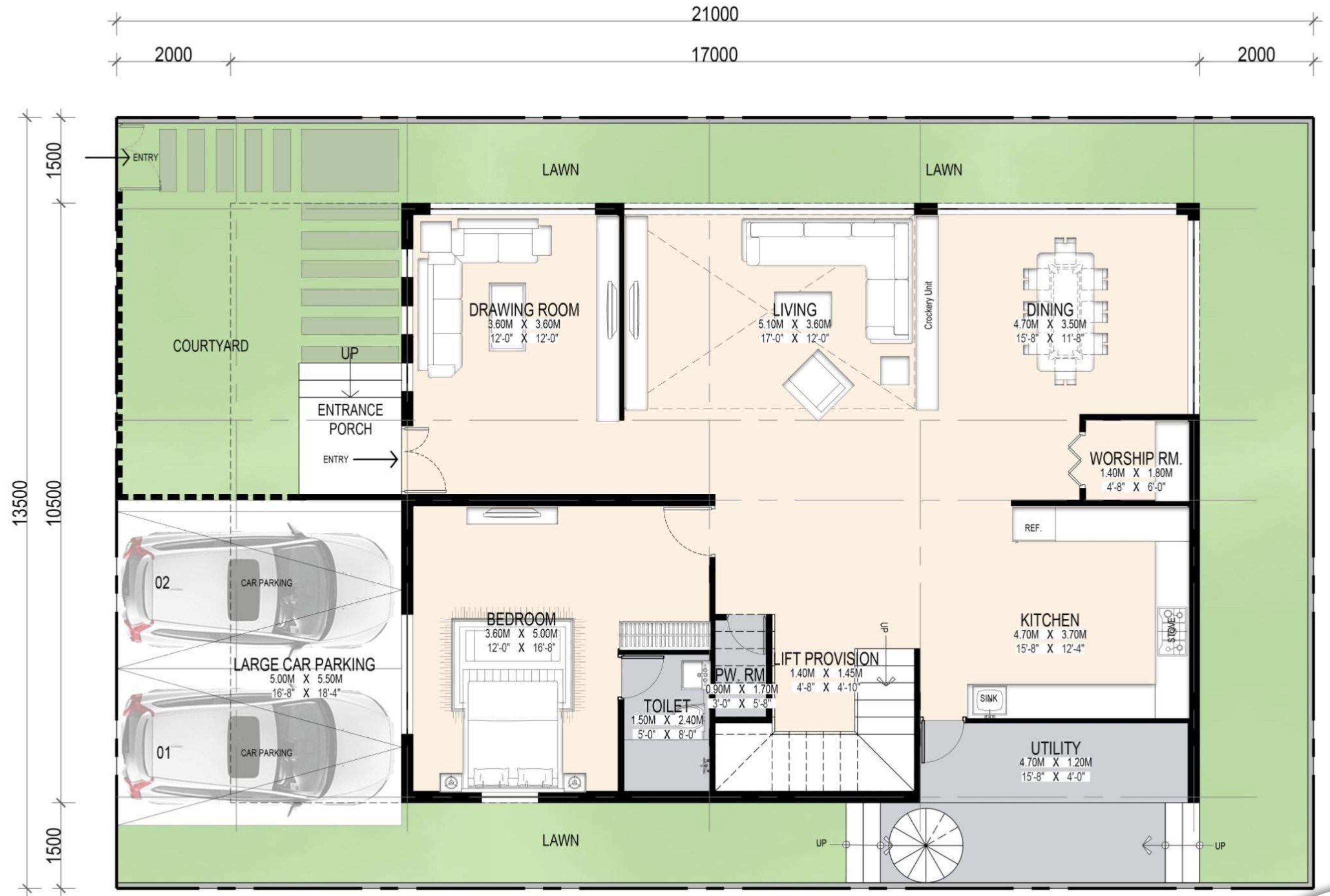
THE BOAT CLUB  
Water Front Villas

## TYPE 2

340 Sq. Yd. Villa - West Facing



# 340 Sq.Yd. Villas Ground Floor





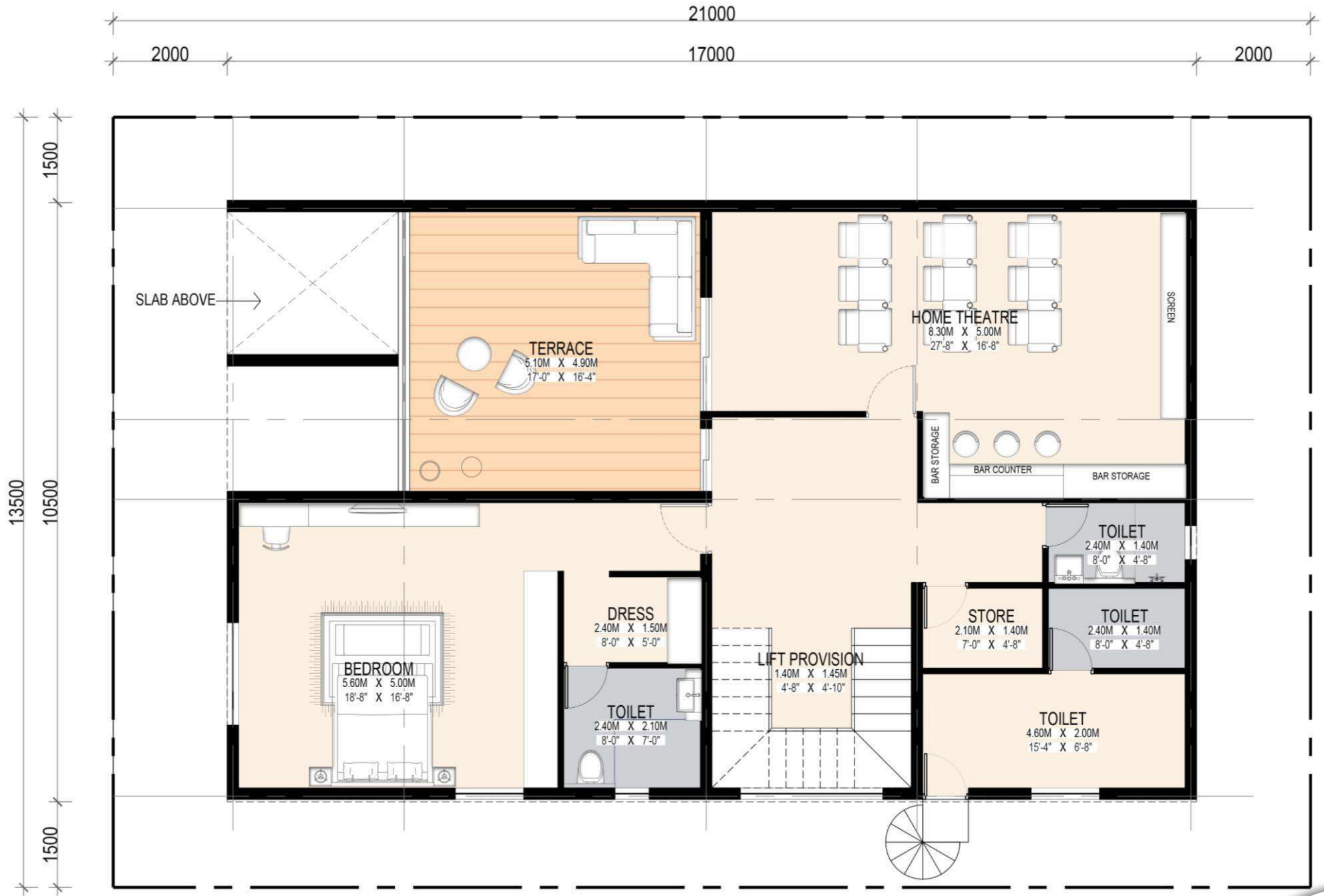
# 340 Sq.Yd. Villas First Floor







# 340 Sq.Yd. Villas Second Floor







THE BOAT CLUB  
Water Front Villas

## TYPE 3A

478 Sq. Yd. Villa - East Facing





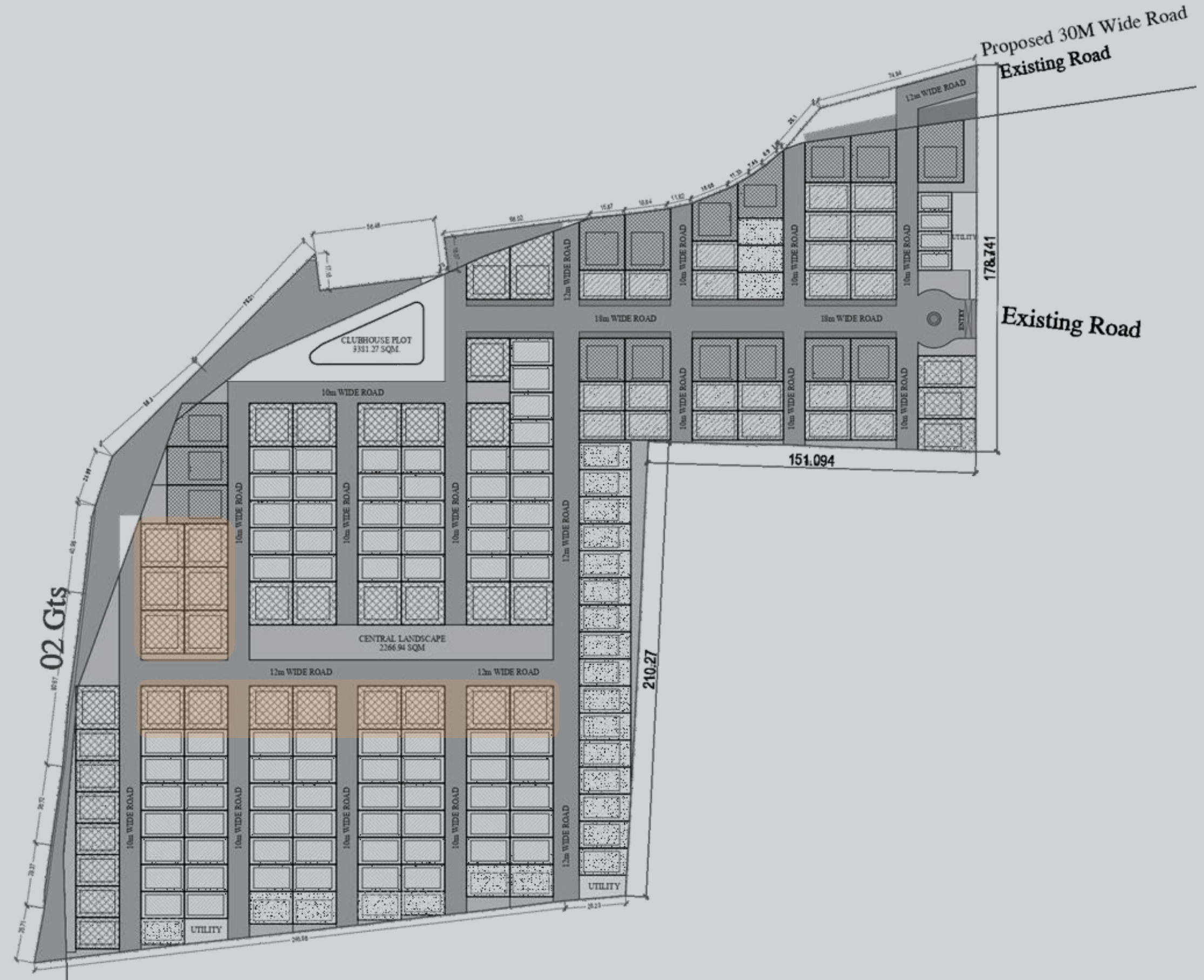
THE BOAT CLUB  
Water Front Villas

## TYPE 3A

478 Sq. Yd. Villa

East Facing

Plot Size – 20m x 20m







THE BOAT CLUB

Water Front Villas

## Type 3A Views







THE BOAT CLUB  
Water Front Villas

## Type 3A Views







THE BOAT CLUB

Water Front Villas

## Type 3A Views







THE BOAT CLUB

Water Front Villas

## Type 3A Views





Type 3A Views







THE BOAT CLUB

Water Front Villas

## Type 3A Views







THE BOAT CLUB  
Water Front Villas

# Type 3A Views





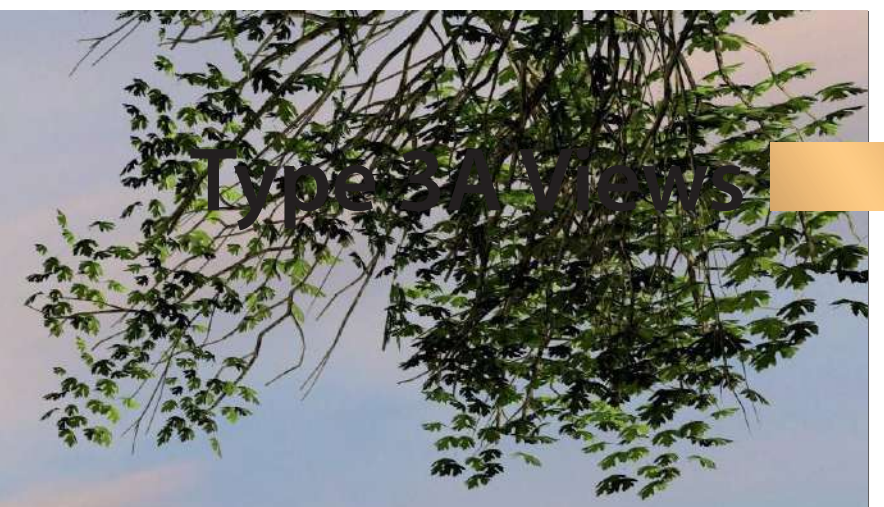


THE BOAT CLUB  
Water Front Villas

## Type 3A Views











THE BOAT CLUB  
Water Front Villas

## TYPE 3A

478 Sq. Yd. Villa - East Facing



# 478 Sq.Yd. Villas Ground Floor





# 478 Sq.Yd. Villas First Floor





# 478 Sq.Yd. Villas Second Floor







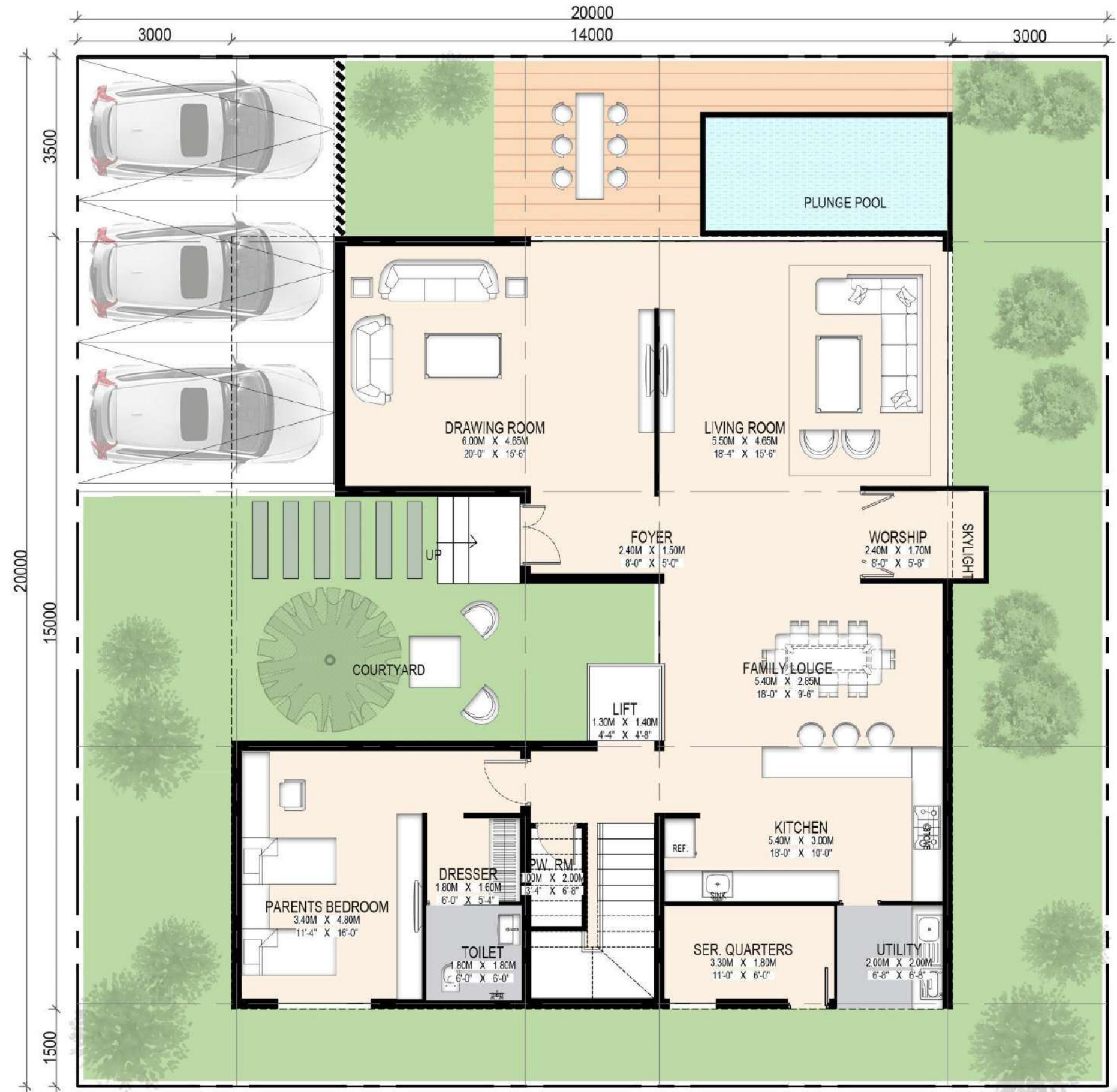
THE BOAT CLUB  
Water Front Villas

## TYPE 3A

478 Sq. Yd. Villa - West Facing

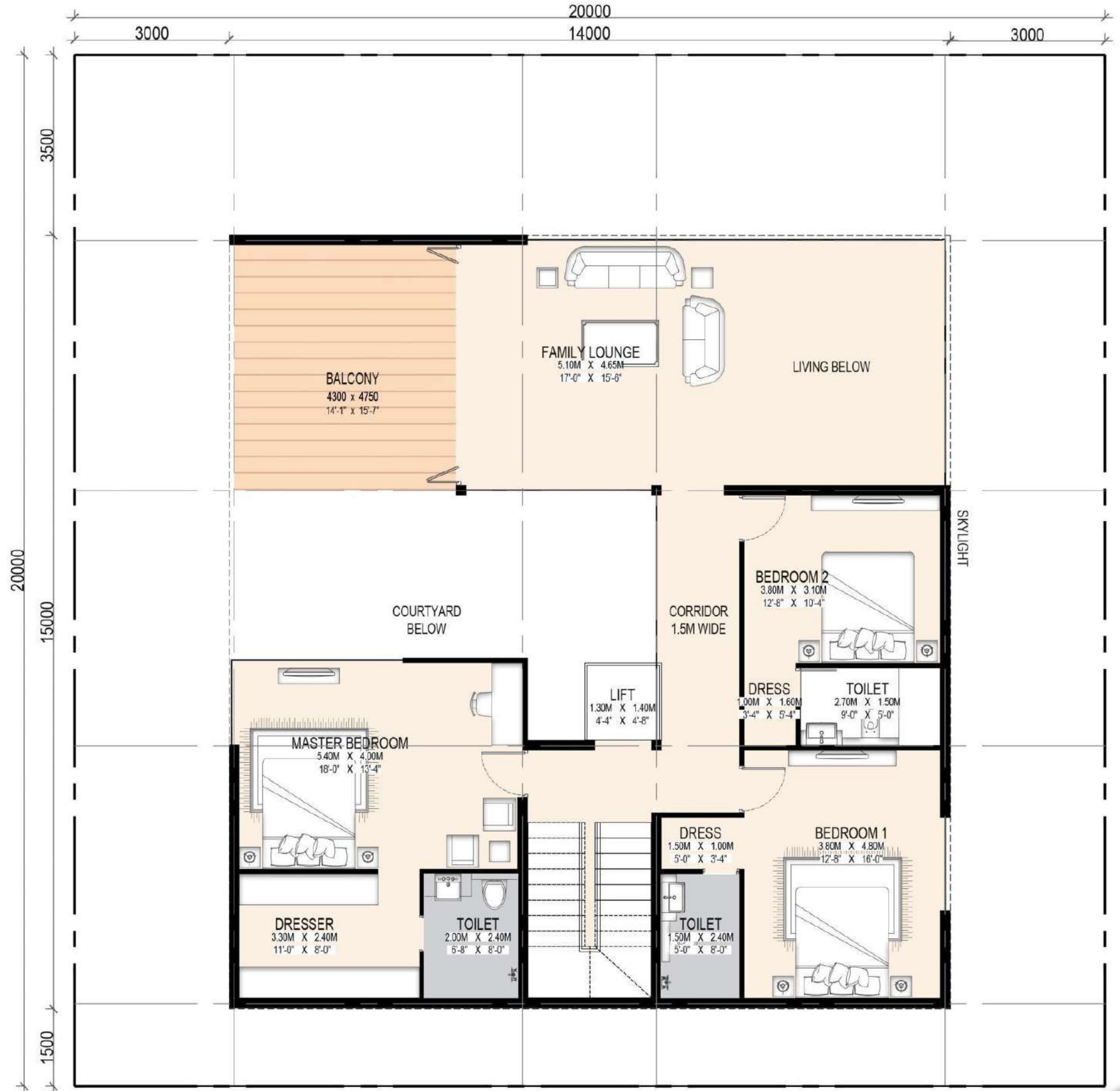


# 478 Sq.Yd. Villas Ground Floor





# 478 Sq.Yd. Villas First Floor





# 478 Sq.Yd. Villas Second Floor





## TYPE 3B

478 Sq. Yd. Villa - East Facing









THE BOAT CLUB  
Water Front Villas

## Type 3B Views







THE BOAT CLUB

Water Front Villas

## Type 3B Views







THE BOAT CLUB  
Water Front Villas

## Type 3B Views







THE BOAT CLUB  
Water Front Villas

## Type 3B Views







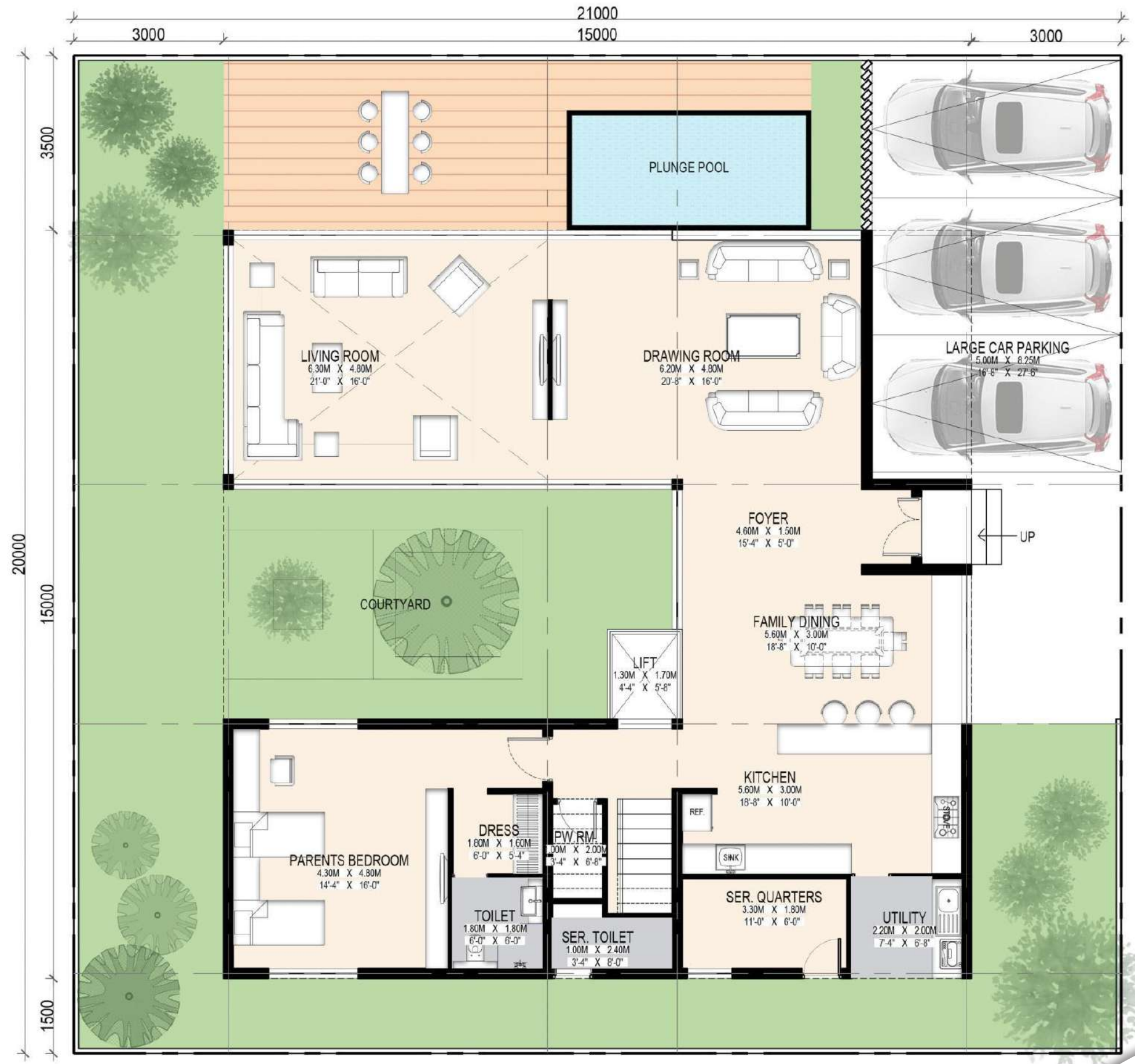
THE BOAT CLUB  
Water Front Villas

## TYPE 3B

502 Sq. Yd. Villa - East Facing

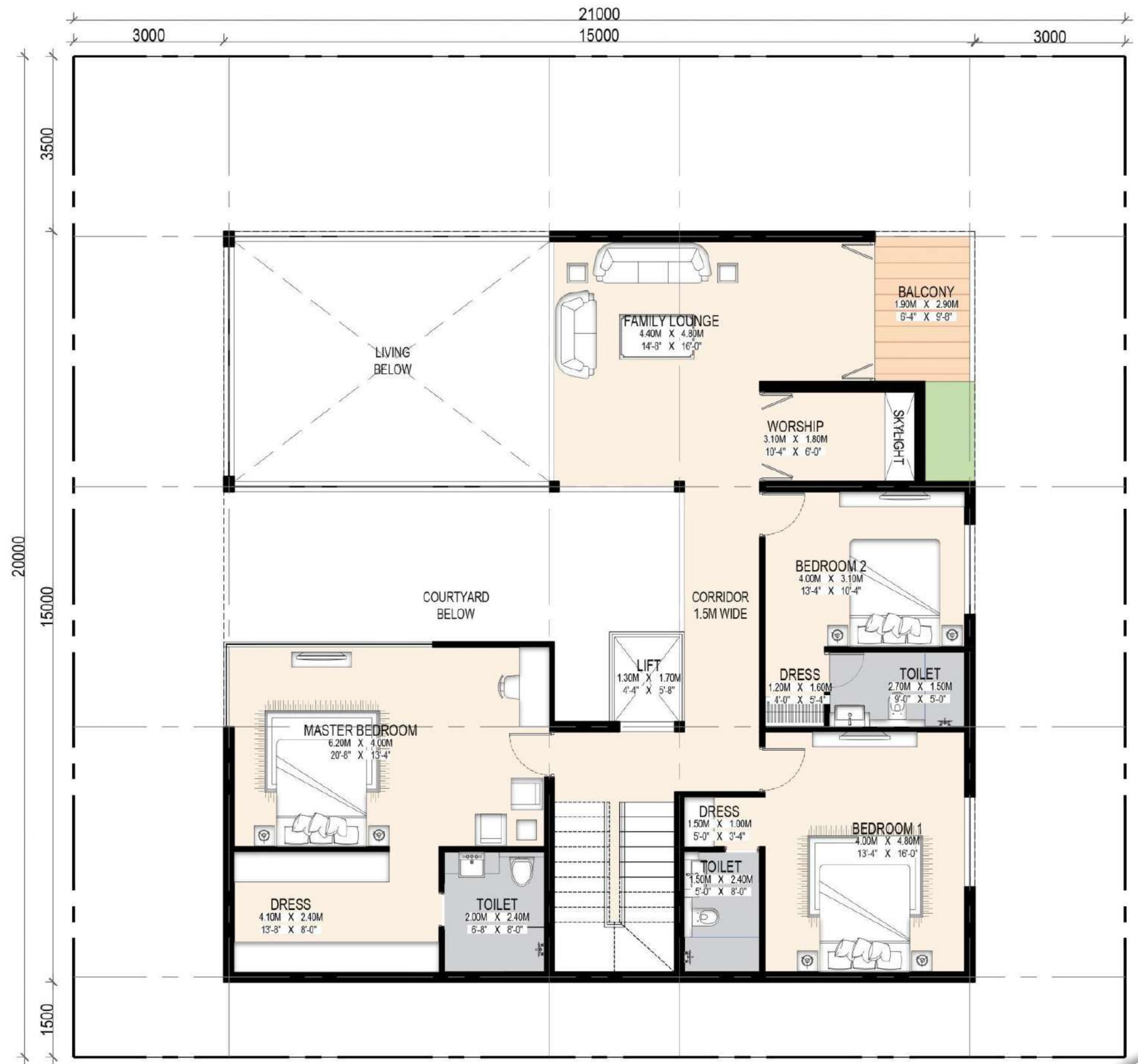


# 502 Sq.Yd. Villas Ground Floor





# 502 Sq.Yd. Villas First Floor





# 502 Sq.Yd. Villas Second Floor







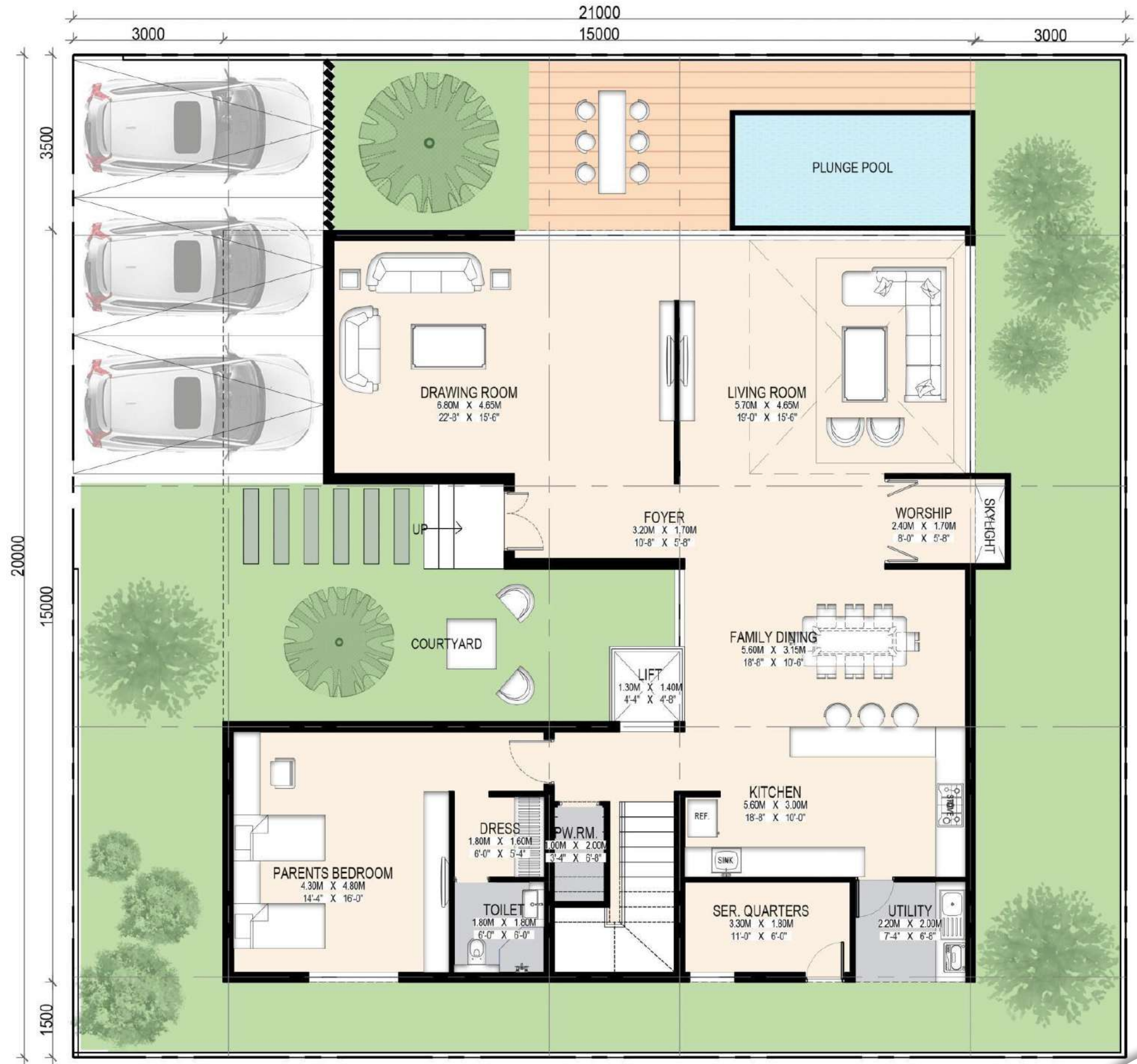
THE BOAT CLUB  
Water Front Villas

## TYPE 3B

502 Sq. Yd. Villa - West Facing



# 502 Sq.Yd. Villas Ground Floor





# 502 Sq.Yd. Villas First Floor





# 502 Sq.Yd. Villas Second Floor







THE BOAT CLUB  
Water Front Villas

## TYPE 5

345 Sq. Yd. Villa East Facing





THE BOAT CLUB  
Water Front Villas

## TYPE 5

502 Sq.Yd. Villa

Plot Size – 20 x14.5m







THE BOAT CLUB  
Water Front Villas

## TYPE 5

345 Sq Yd. Lake Facing Views







# Type 5B Views





# Type 5B Views







THE BOAT CLUB  
Water Front Villas

## Type 5B Views







THE BOAT CLUB  
Water Front Villas

## Type 5B Views







THE BOAT CLUB  
Water Front Villas

## Type 5B Views



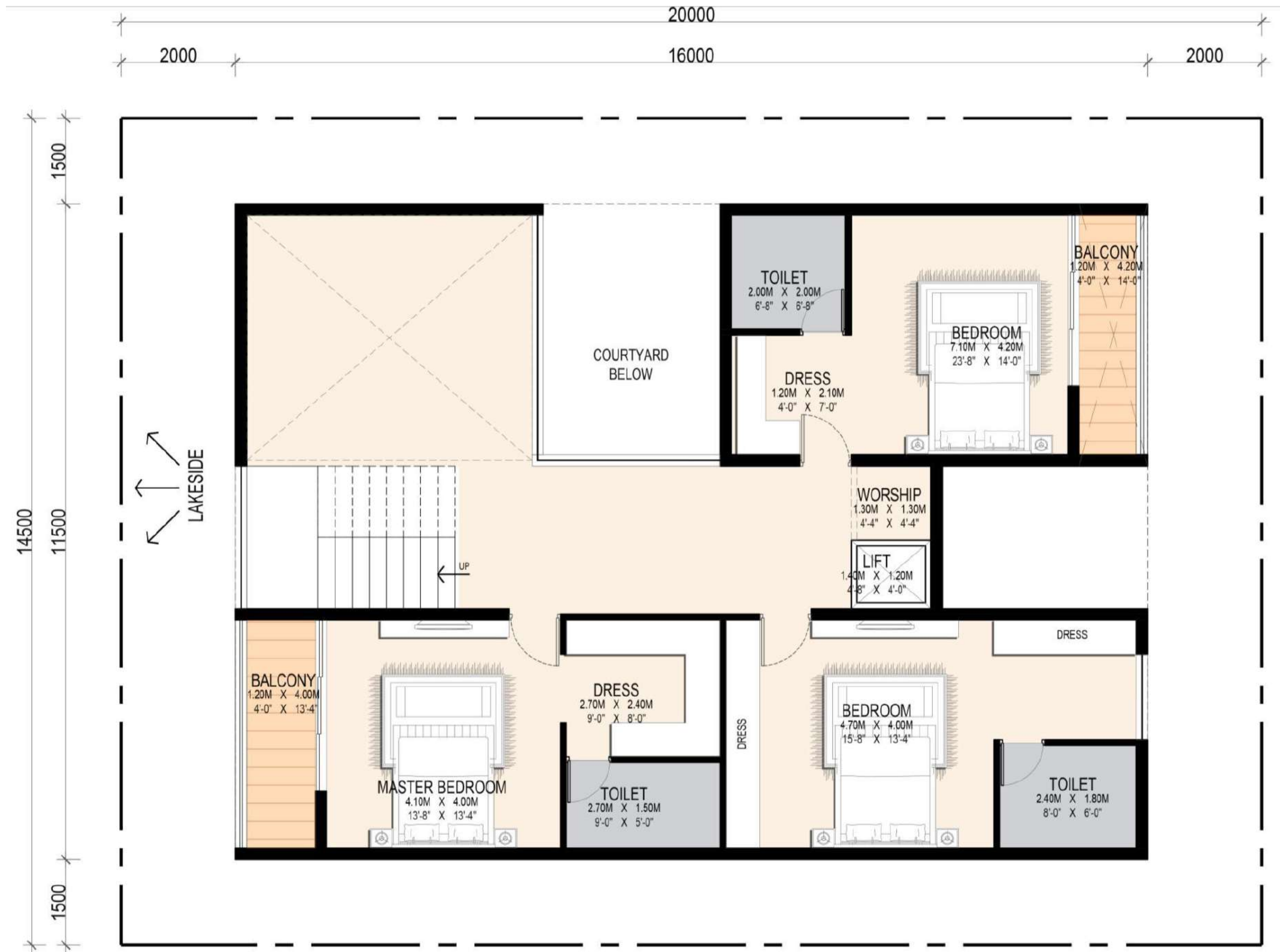


# 345 Sq.Yd. Villas Ground Floor





# 345 Sq.Yd. Villas First Floor





# 345 Sq.Yd. Villas Second Floor







THE BOAT CLUB

Water Front Villas

# Club House







THE BOAT CLUB

Water Front Villas

# Club House







THE BOAT CLUB  
Water Front Villas

THANK YOU

