

# Mukti from small homes



SUBISHI  
**Fortuna  
Towers**  
AT MOKILA

# Mukti from cramped living spaces

Seamless living spaces of  
46 feet from kitchen to patio.

Are tiny living spaces keeping you awake at night? It's time to break free from them and embrace a new level of mukti. Step into a new kind of world where every nook and corner breathes liberation. From generous living spaces to grand bedrooms and sprawling balconies, indulge in a larger-than-life experience.



Private sit out  
and multiple  
balconies



Spacious  
bedrooms



Luxury  
specifications

# Mukti from single living rooms

Three living rooms.  
Formal. Family. Outdoor.



FORMAL LIVING ROOM



FAMILY LIVING ROOM

Why stick to one living room when you can enjoy the privilege of three ?  
Say hello to Subishi Fortuna where you can enjoy the comfort of three living  
rooms – formal, family and outdoor. Nestled in peaceful Mokila, right by the  
bustling Neopolis, it's your dream abode.

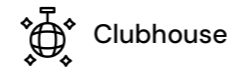
- 3 BHKs of 2300 sq.ft to 2633 sq.ft
- 4 BHKs of 2715 sq.ft to 2790 sq.ft
- No common walls
- False ceiling for all units
- Two car parkings per unit
- Interconnected blocks and 100% Vastu units



OUTDOOR LIVING ROOM

# Mukti from a dull life

Live your best life every single day  
with our exciting range of amenities.



Clubhouse



Swimming pool



Guest rooms



Gym



3 - level parking



Table tennis



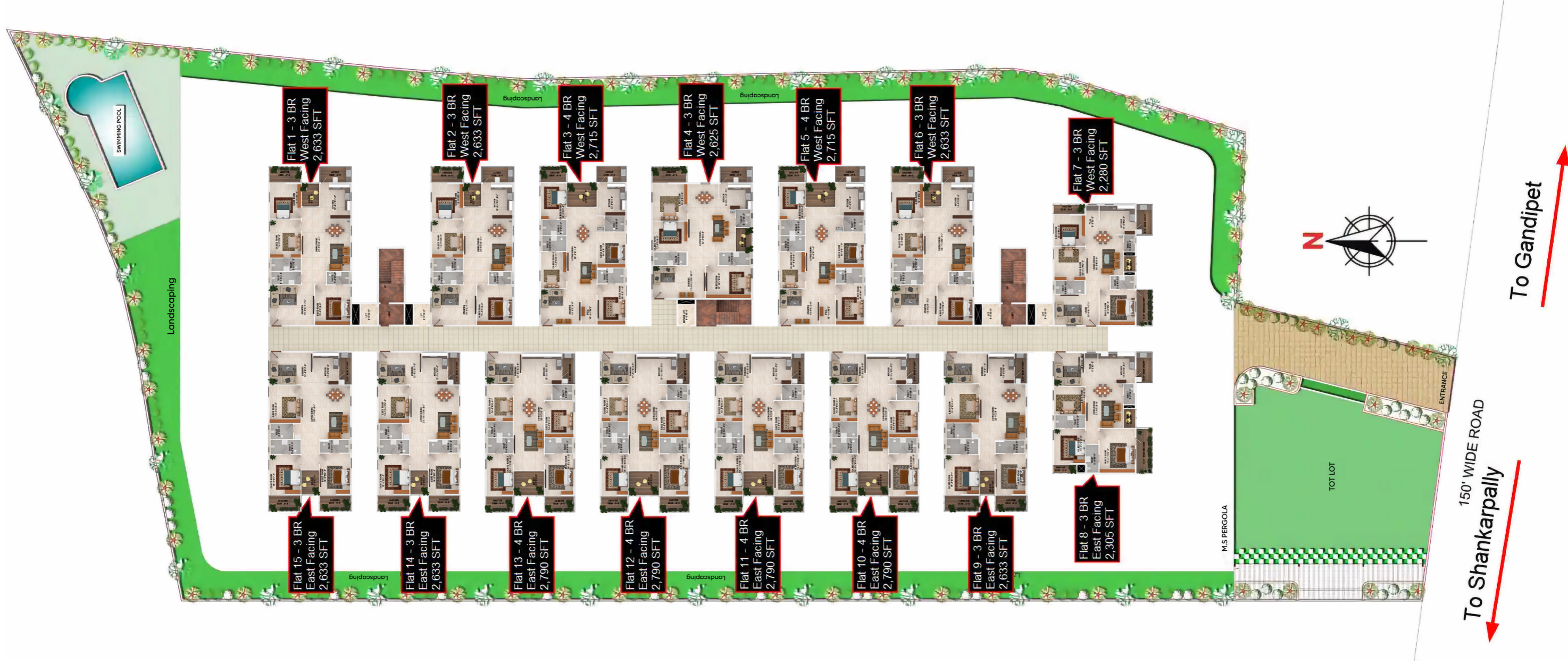
Party hall



24/7 security



# Master Plan



# Floor Plans

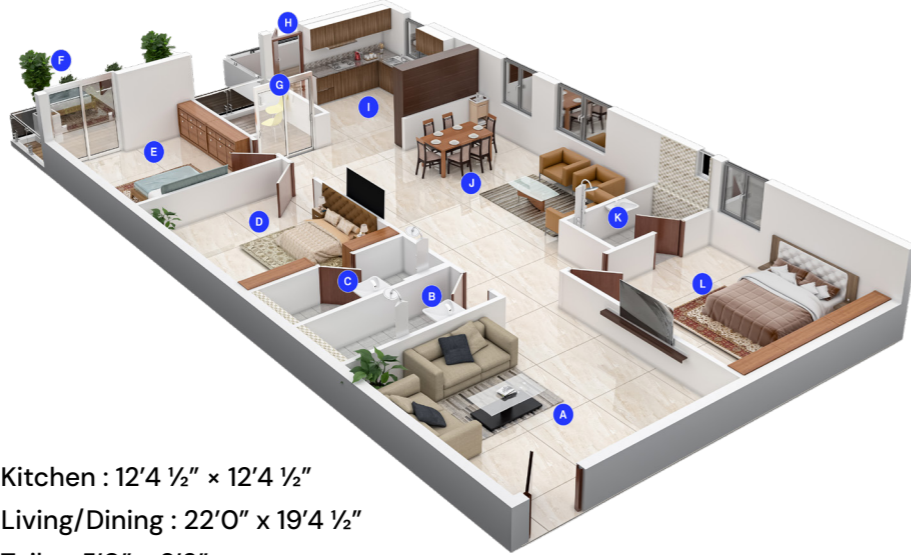
**FLAT NO: 2**  
**AREA: 2633.00 sq.ft.**

Dimensions

- A - Drawing : 15'9" x 17'7 1/2"
- B - Toilet: 5'0" x 12'3"
- C - Toilet: 5'0" x 12'3"
- D - Ch.Bedroom: 15'3" x 12'3"

- E - G.Bedroom: 13'9" x 12'3"
- F - 6'6" Wide Balcony
- G - Sit-Out : 9'3" x 6'7 1/2"
- H - 6'6" Wide Utility

- I - Kitchen : 12'4 1/2" x 12'4 1/2"
- J - Living/Dining : 22'0" x 19'4 1/2"
- K - Toilet: 5'0" x 9'3"
- L - M.Bedroom : 15'9" x 14'0"



**FLAT NO: 4**  
**AREA: 2625.00 sq.ft.**

Dimensions

- A - Drawing : 12'10 1/2" x 20'10 1/2"
- B - Toilet: 5'0" x 13'4 1/2"
- C - Ch.Bedroom: 12'0" x 13'9"
- D - G.Bedroom: 14'6" x 13'9"

- E - 6'6" Wide Balcony
- F - 6'6" Wide Utility
- G - Kitchen : 9'10 1/2" x 12'7 1/2"
- H - Toilet: 6'11" x 6'0"



- I - 6'9" Wide Balcony
- J - Toilet: 5'0" x 12'9"
- K - M.Bedroom: 12'10 1/2" x 18'0"
- L - Living/Dining : 32'3" x 18'9"

**FLAT NO: 3**  
**AREA: 2715.00 sq.ft.**

Dimensions

- A - Drawing: 14'0" x 15'9"
- B - Ch.Bedroom - 1: 14'6" x 10'3"
- C - Toilet: 6'0" x 10'3"
- D - Toilet: 6'0" x 10'3"

- E - Ch.Bedroom- 2: 14'3" x 10'9"
- F - 6'6" Wide Balcony
- G - Sit-Out : 10'0" x 11'9"
- H - 6'6" Wide Utility

- I - Kitchen: 12'9" x 11'0"
- J - Toilet: 6'0" x 8'0"
- K - G.Bedroom : 14'0" x 11'0"
- L - Toilet: 6'0" x 11'0"



- M - M.Bedroom : 16'0" x 11'0"
- N - Puja: 10'4 1/2" x 6'0"
- O - Living/Dining : 36'3" x 11'3"

**FLAT NO: 5**  
**AREA: 2715.00 sq.ft.**

Dimensions

- A - Drawing: 14'0" x 15'9"
- B - Ch.Bedroom - 1: 14'6" x 10'0"
- C - Toilet: 6'0" x 10'0"
- D - Toilet: 6'0" x 10'0"

- E - Ch.Bedroom- 2: 14'3" x 10'0"
- F - 6'6" Wide Balcony
- G - Sit-Out : 10'0" x 11'9"
- H - 6'6" Wide Utility

- I - Kitchen: 12'9" x 11'0"
- J - Toilet: 6'0" x 8'0"
- K - G.Bedroom : 14'0" x 11'0"
- L - Toilet: 6'0" x 11'0"



- M - M.Bedroom : 16'0" x 11'0"
- N - Puja: 10'4 1/2" x 6'0"
- O - Living/Dining : 36'3" x 11'9"

# Floor Plans

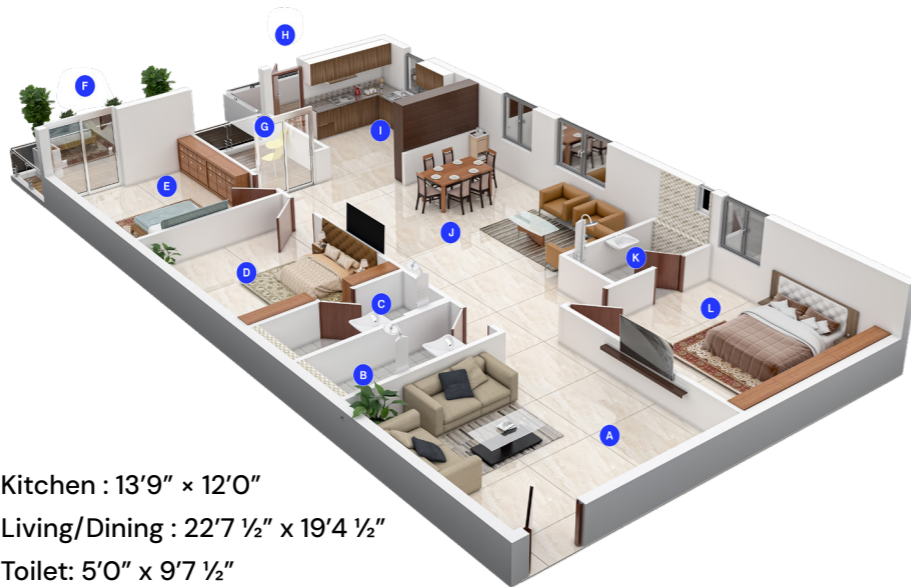
**FLAT NO: 6**  
**AREA: 2633.00 sq.ft.**

Dimensions

- A - Drawing : 15'9" x 17'7 1/2"
- B - Toilet: 5'0" x 12'3"
- C - Toilet: 5'0" x 12'3"
- D - Ch.Bedroom: 15'3" x 12'3"

- E - G.Bedroom: 13'9" x 12'3"
- F - 6'6" Wide Balcony
- G - Sit-Out : 9'7 1/2" x 7'0"
- H - 6'6" Wide Utility

- I - Kitchen : 13'9" x 12'0"
- J - Living/Dining : 22'7 1/2" x 19'4 1/2"
- K - Toilet: 5'0" x 9'7 1/2"
- L - M.Bedroom : 15'9" x 14'0"



**FLAT NO: 9**  
**AREA: 2633.00 sq.ft.**

Dimensions

- A - Drawing: 12'0" x 17'0"
- B - G.Bedroom -15'3" x 13'4 1/2"
- C - Toilet: 6'0" x 10'4 1/2"
- D - Toilet: 6'0" x 10'3"

- E - Ch.Bedroom : 15'6" x 13'4 1/2"
- F - 6'6" Wide Balcony
- G - Sit-Out : 10'0" x 5'10"
- H - 6'6" Wide Utility

- I - M.Bedroom : 16'0" x 12'0"
- J - Toilet : 5'0" x 12'0"
- K - Living/Dining : 22'6" x 18'3"
- L - Kitchen : 12'0" x 10'0"
- M - M.Bedroom : 5'0" Wide Utility



**FLAT NO: 10,11,12,13**  
**AREA: 2790.00 sq.ft.**

Dimensions

- A - Drawing : 12'1 1/2" x 13'19"
- B - G.Bedroom: 14'6" x 10'4 1/2"
- C - Toilet: 6'0" x 10'4 1/2"
- D - Toilet: 6'0" x 10'4 1/2"

- E - Ch.Bedroom: 16'1 1/2" x 10'4 1/2"
- F - 6'6" Wide Balcony
- G - Sit-Out: 10'0" x 12'0"
- H - 6'6" Wide Balcony

- I - M.Bedroom : 16'1 1/2" x 11'3"
- J - Toilet: 6'0" x 11'3"
- K - G.Bedroom: 14'6" x 11'3"
- L - Toilet: 6'0" x 8'3"

- M - M - Living/Dining : 34'6" x 12'0"
- N - Kitchen: 12'1 1/2" x 15'7 1/2"
- O - 5'0" Wide Utility



**FLAT NO: 14**  
**AREA: 2633.00 sq.ft.**

- A - Drawing : 12'7 1/2" x 17'0"
- B - G.Bedroom : 14'10 1/2" x 12'3"
- C - Toilet: 6'1 1/2" x 9'3"
- D - T Toilet: 5'6" x 12'3"

- E - Ch.Bedroom : 15'6" x 12'3"
- F - 6'6" Wide Balcony
- G - Sit-Out : 10'0" x 7'0"
- H - 6'6" Wide Balcony

- I - M.Bedroom : 16'0" x 12'0"
- J - Toilet : 5'0" x 12'0"
- K - Living/Dining : 21'10 1/2" x 19'4 1/2"
- L - Kitchen: 12'7 1/2" x 10'0"
- M - M.Bedroom : 5'0" Wide Utility



# Mukti from ordinary specifications & fixtures

## Structure

- R.C.C framed structure to withstand wind and seismic loads.

## Painting

- External: Texture based paint / apex paints of Asian / ICI make.
- Internal & ceiling : Two coats of acrylic royal emulsion paints over a coat of primer and putty.

## Flooring

- Vitrified porcelain tiles branded or equivalent make in bedrooms, living, drawing, dining and staircase.
- Bathrooms : Anti skid finish vitrified tiles.
- Balconies : Clay or ceramic tiles.
- Parking area & utility : Cement based tiles over PCC bed and anti skid ceramic tiles.

## Super Structure

- Quality brick work in cement mortar.



**Fenesta**  
Better by Design

**NCLdoor**  
Fit it. Forget it.

**GROHE**

*American Standard*



## Plastering & Doors

- 2 coats of cement plaster for internal and external (excluding ceiling in rooms).
- Main door : B.T Wood frame & shutter with melamine polishing/veneer and designer hardware.
- Internal doors : B.T Wood frame with polished masonite flush shutters.
- Windows and french doors : Aluminium windows from Fenesta.

## Telecom / I - Net / Cable TV

- F T T H with Wi-Fi internet, DTH & provision for video door phone.

## Cooking Gas Pipeline

- Pipeline connection to the kitchen, with provision for fixing meter and connecting to the gas grid (PNG).

## Toilets

- Designer vitrified tile up to 8' height and all sanitary used are of Duravit/American standard make or equivalent.
- Hot and cold wall mixer with shower.
- All C.P fittings of chrome plated of grohe or equivalent make.

## Plumbing & Sanitary

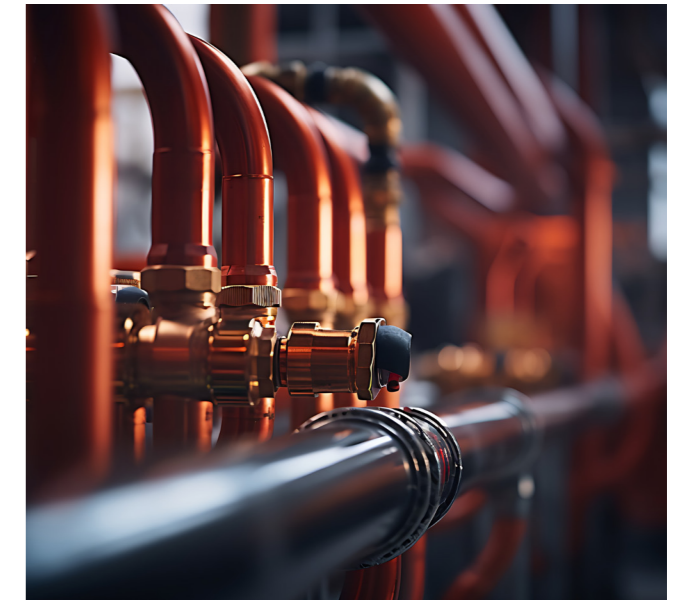
- Water supply : ISI mark of GI/CPVC piping.
- Drainage : ISI mark of PVC SWR sanitary piping.

## Fire Safety

- A fire hydrant on all floors and basements.
- Fire alarm and public address system on all floors and parking areas(basements).

## Generator

- G set backup for common areas and power backup for up to 3 KW.



## Home Automation

- Wiring for Wi-Fi enablement.
- Automated metering system for electricity and provision for water.

## Lifts

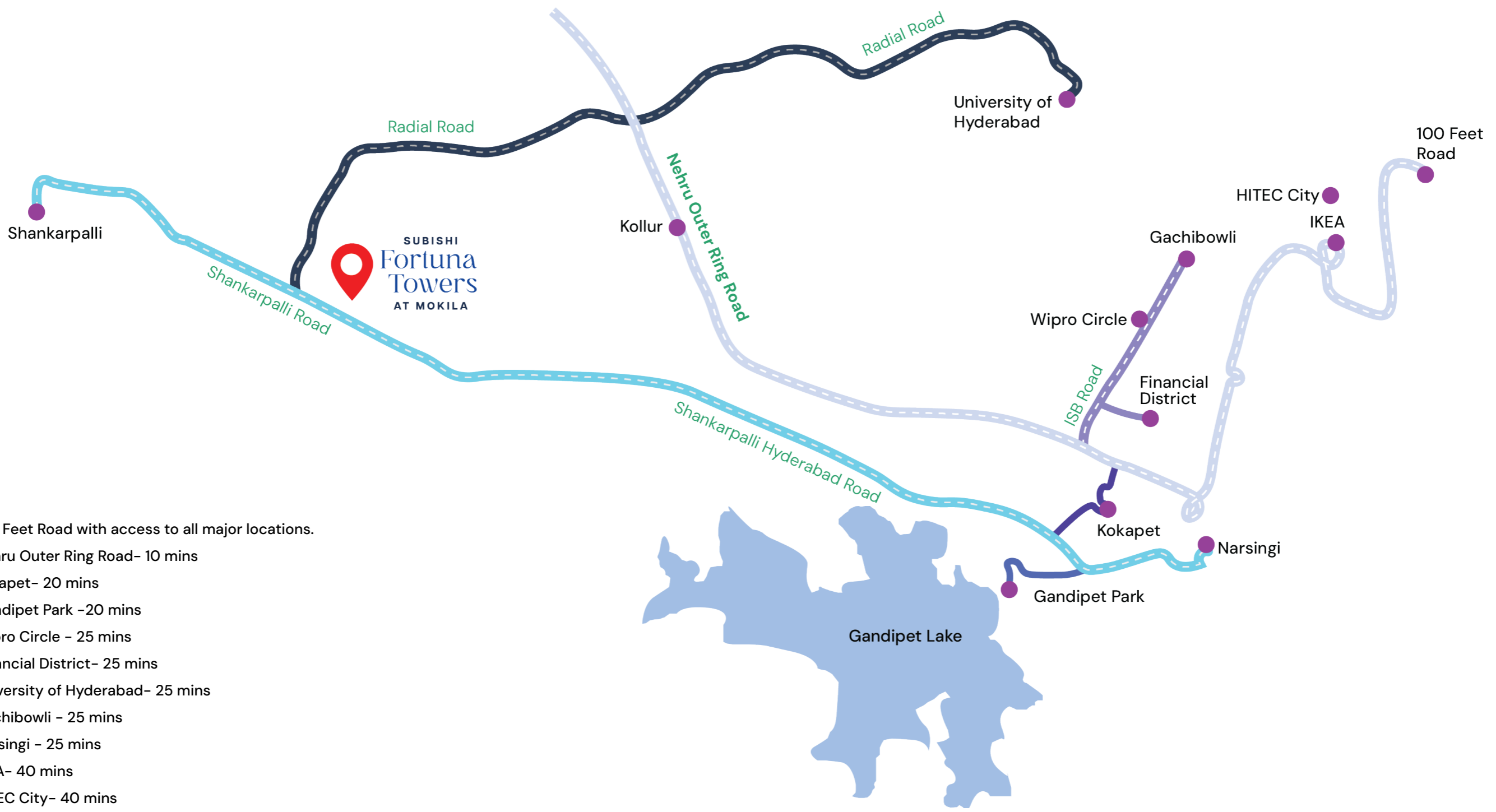
- High-speed automatic passenger lifts with a rescue device with V3F for energy efficiency from Schindler / thyssenkrupp / Mitsubishi or equivalent entrance with granite/tiles cladding.
- One among them per tower is dedicated for goods/service.

## Tile Cladding & Dadoing

- Toilets: Well-designed concept with designer tiles for walls and floor, and dadoing up to lintel height.
- Utility: Glazed ceramic tiles up to 900mm near the wash area.



# Mukti from traffic jams



# Subishi: Where trust meets innovation

Forest Edge Luxury Villas



Subishi, a trusted name in Mokila, has won hearts with projects like Subishi Sapphire, Mist Homes, Waterhomes and Windsor. Their apartment designs prioritise open space, ample lighting and privacy ensuring a welcoming environment. The recently sold out Subishi Sapphire through word of mouth and referrals have established them as a reliable developer in Mokila.

Polam Luxury Flats



Sapphire Residential Flats



The Valencia



SUBISHI  
**Fortuna  
Towers**  
AT MOKILA

 **82961 62544**

 **[www.subishifortunatowers.com](http://www.subishifortunatowers.com)**

The amenities, specifications, facilities, surrounding infrastructure, stock images and features shown and/or mentioned and the image renders used herein are purely indicative and for representational purposes and may differ from the actuals. The purpose of this brochure is to indicate to the customers the extent of the amenities and facilities that may come up in the project as per the present approved layout. Any prospective sale shall strictly be governed by the terms and conditions of the agreement for sale to be entered into between the parties.

Marketed By  
**ceyone**<sup>®</sup>  
Agent RERA No.: A02200002211