

2&3 BHK LUXURY APARTMENTS

@ PRAGATHI NAGAR,
KUKATPALLY

A Timeless Home
That Reflects Perfection



Welcome To The World
Of Your Dreams



A World Pampered With Luxuries

In the most thriving locale Pragathi Nagar of Kukatpally, is a home adorned with luxuries that best match your perception of an ideal home. An exquisite masterpiece of contemporary living in the address of the next generation.

A World Build For Your
Today And Tomorrow.





Here You Stop Dreaming And Start Living

In the heart of the city, we bring you a paradise of vast open spaces enveloped by the hues of nature's beauty, for you to connect with the every second of life.



An Architectural Masterpiece That Inspires You

Modern, futuristic and awe-inspiring modern homes that reflects a contemporary lifestyle awaits you here.



*It's Rare And Precious,
So Built By The Masters.*

Your mind attains peace here with the sense of assurance that comes with the legacy of experience held by the developers.

Your home here is build by the leading developers of Hyderabad who have created iconic landmarks that speak volumes.





Nurturing Magical Moments

With the aura of happiness and peace that surrounds you, your haven here is blessed to bring you moments that are truly magical.

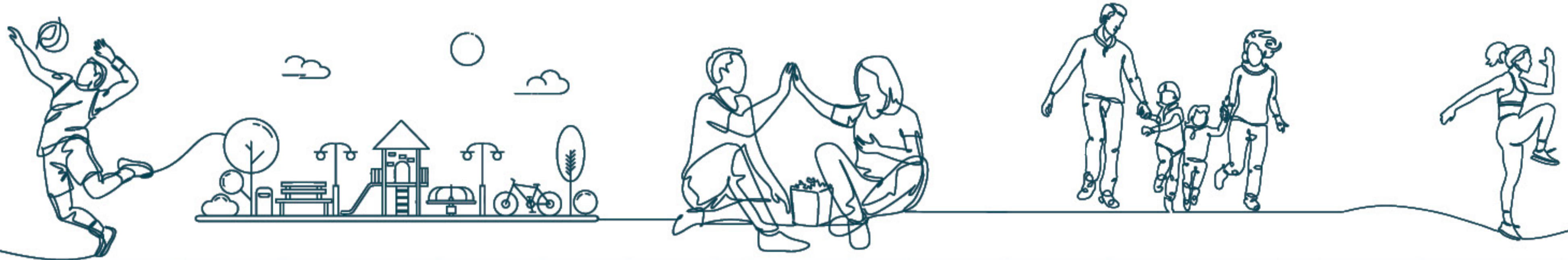
Magnificence That Reflects
At Each Corner



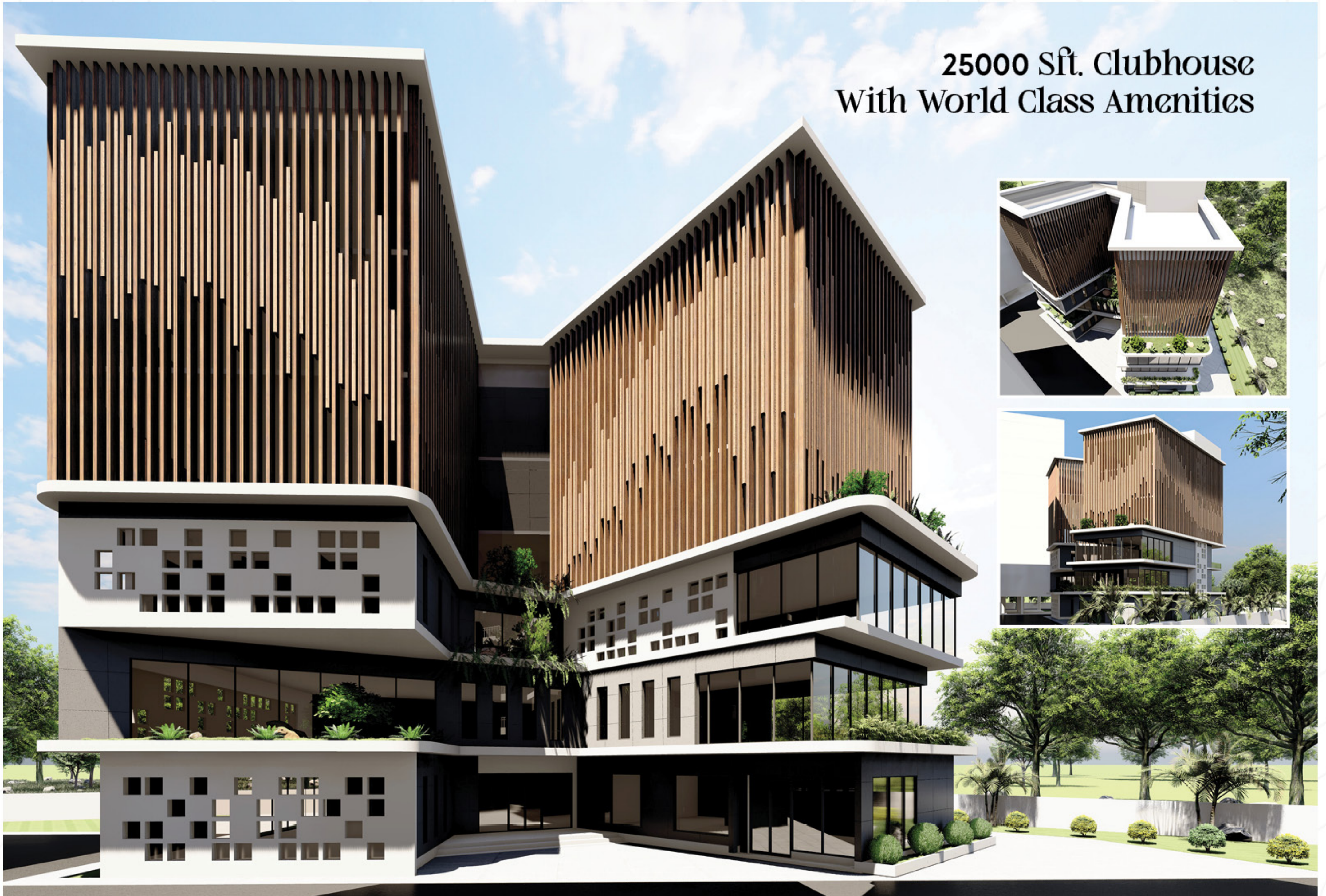
Truly One-Of-A-Kind Home!

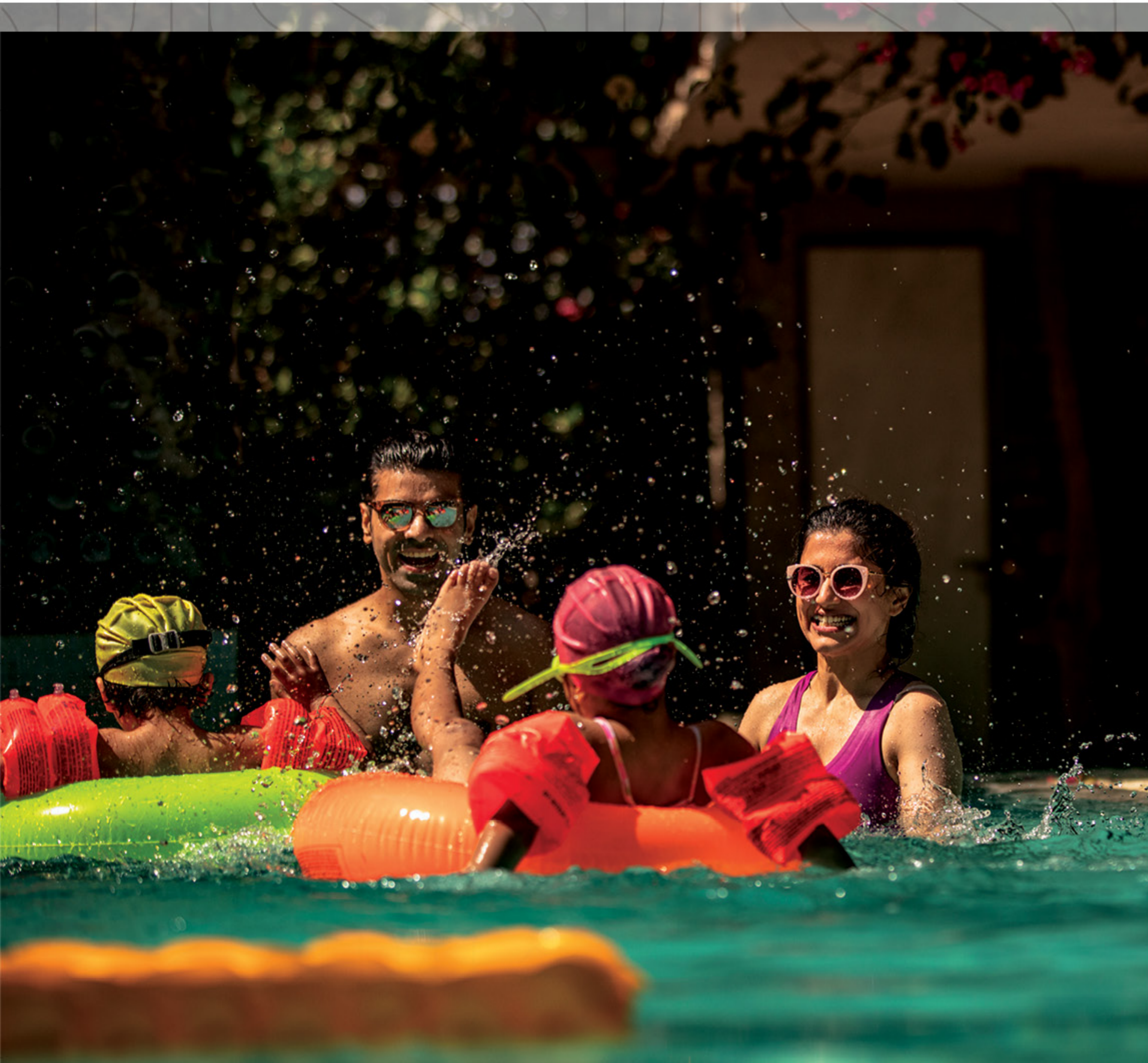


A World That Enriches You



**25000 Sft. Clubhouse
With World Class Amenities**



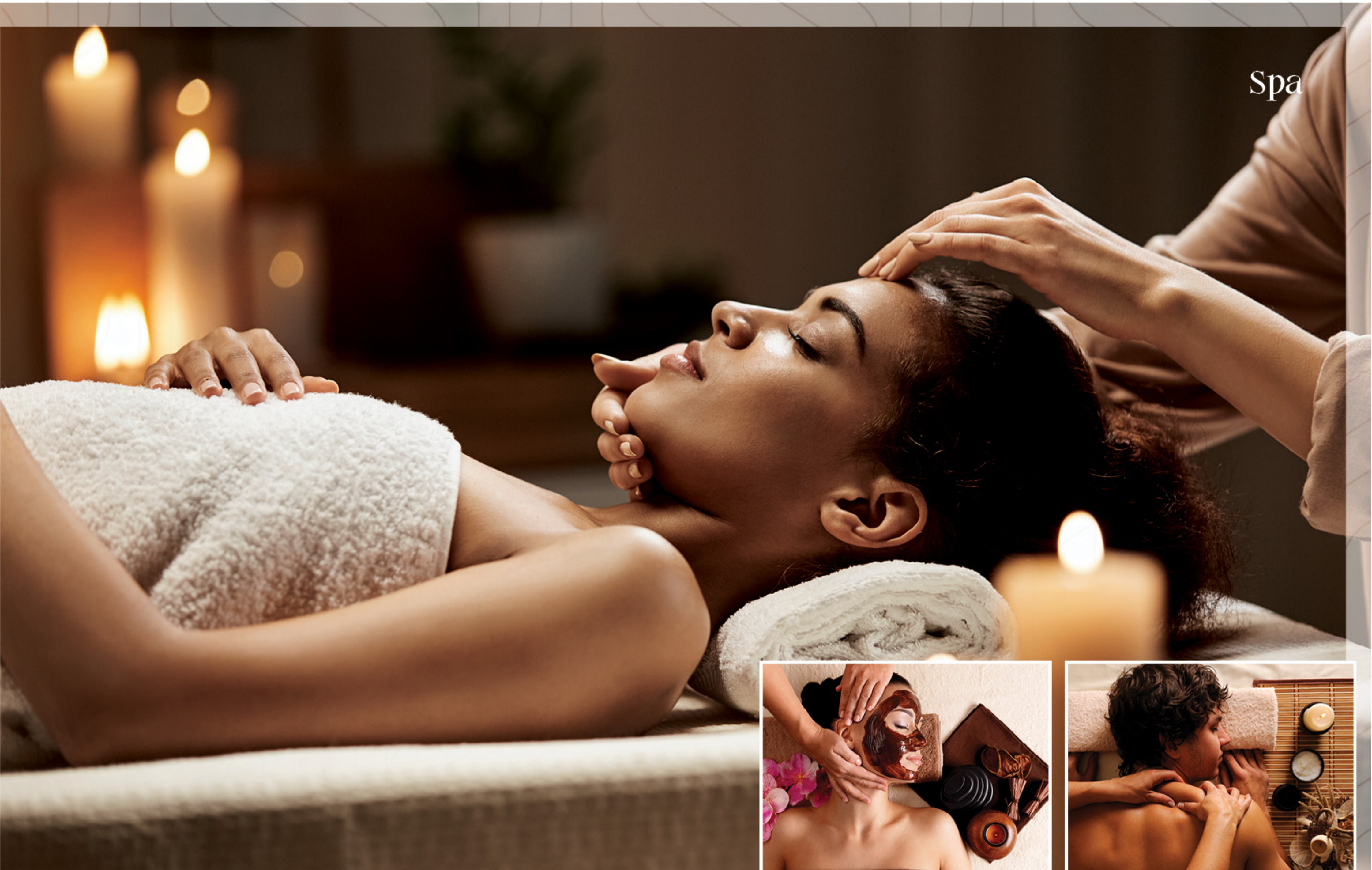


Clubhouse Amenities

1. Banquet hall
2. Office desks for work from home
3. Reception and waiting lounge
4. Kitchen
5. Creche
6. Maintenance office
7. Indoor games
(Snooker, Table tennis, Carroms, Chess)
8. Gym
9. Yoga / Aerobics deck
10. Guest rooms
11. Gentlemen's room
12. Spa
13. Steam/Sauna
14. Saloon
15. Guest lounge
16. Conferencing facility
17. Mini theater
18. Indoor badminton courts
19. Barbeque counter



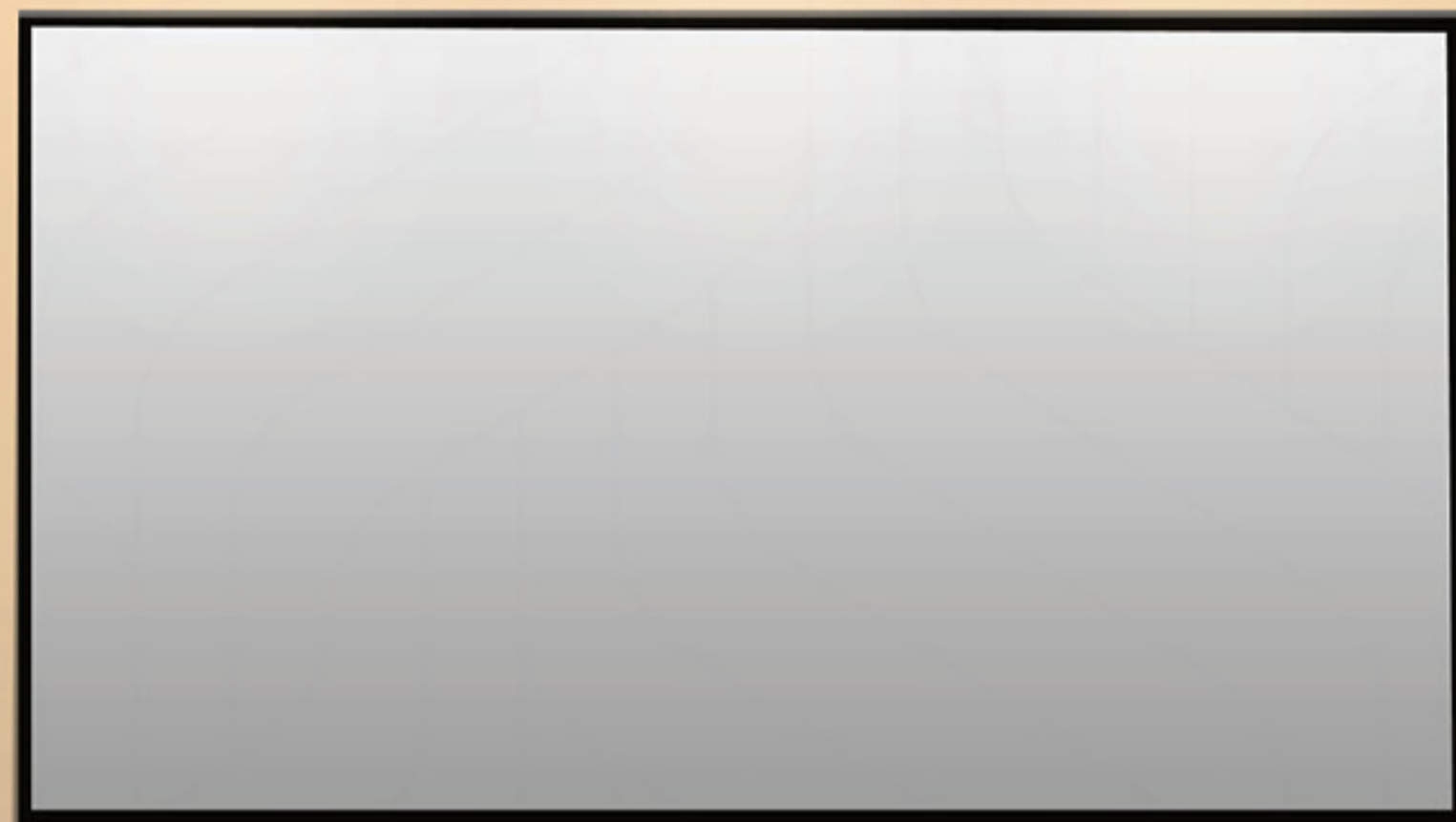
Spa



Mini Theater



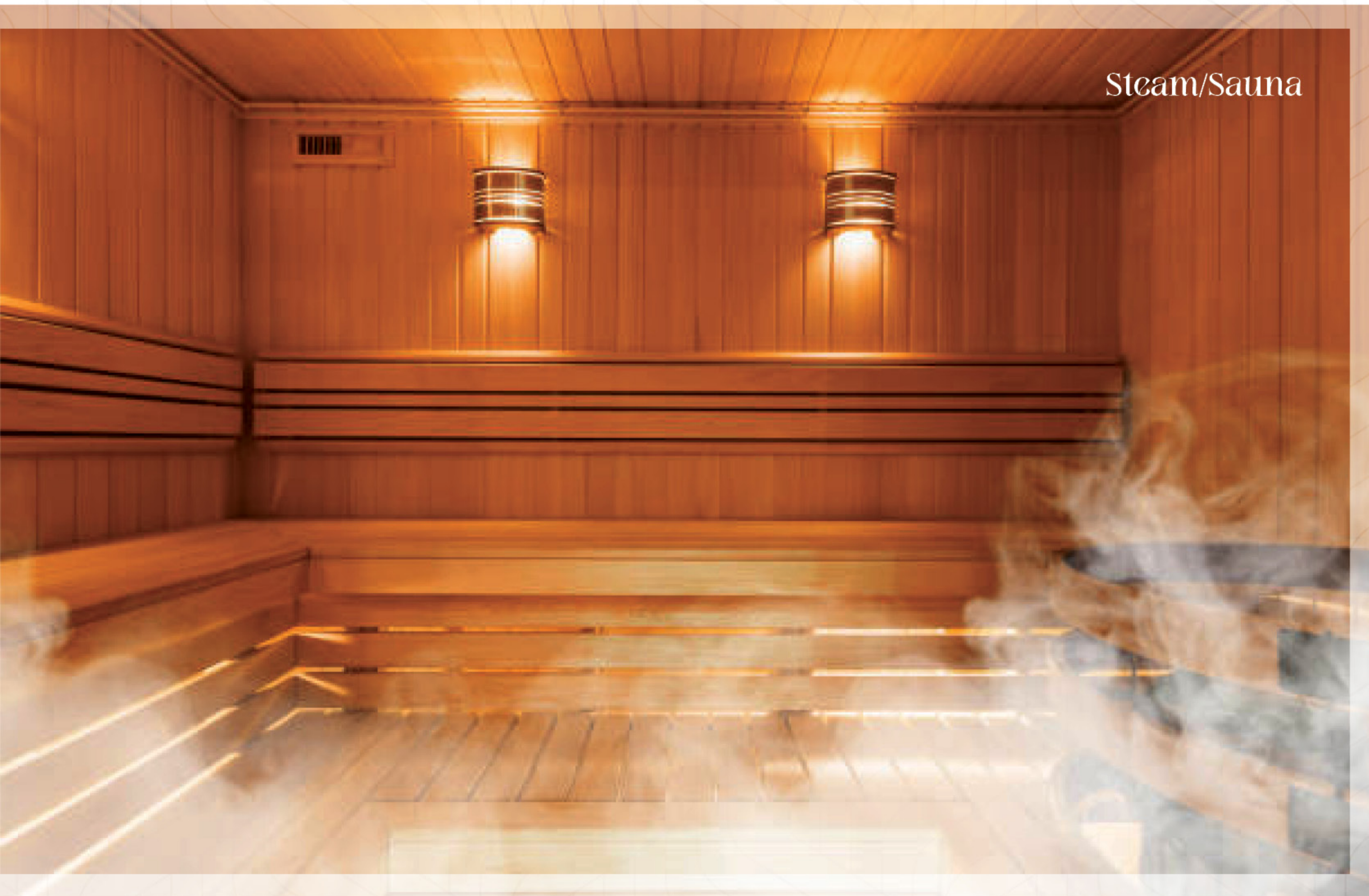
Conferencing Facility



Saloon



Steam/Sauna



Creche



Reception And Waiting Lounge



Contemporary Interiors That
Compliment Your Style.





Indoor Games





A wonderland for the little ones
to explore childhood.



Discover The Equilibrium Of Life.

This arcadian environment let's you harmonize your mind and body in a state of equilibrium, letting you relax and rejuvenate your senses as you connect with life.



A world crafted with love
for your loved ones.



Outdoor Amenities

1. Sky Lounge Yoga Room
2. Sky Lounge Kitty Party Area
3. EV Charging Provision
4. Hammock Zone
5. Co-Working Space On The Roof Top With View
6. Roof Top Private Party Area
7. Roof Top Private Cinema Zone
8. Roof Top Green Dining Area
9. 24x7 Security
10. State-Of-The-Art Clubhouse With Indoor Facilities
11. Adult & Kids' Swimming Pool With Deck
12. Walking/Jogging/Cycling Track
13. Grand Entrance Plaza
14. Outdoor Gym
15. Cricket Practice Nets
16. Paragola With Seating
17. Children's Play Areas
18. Intercom Kids Adventure Activity Zone
19. Outdoor Meditation & Yoga Center
20. Multi-Purpose Court
21. Beautifully Landscaped Lawns
22. Stp Plant
23. Rainwater Harvesting
24. Water Softening Plant
25. Solar Fencing All Around The Project
26. Cctv Survilance



Roof Top Green Dining Area



Sky Lounge Yoga Room

Roof Top Private Party Area





Hammock Zone



Cricket Practice Nets

A photograph of a woman and a young girl laughing joyfully. The woman is in the foreground, wearing a light blue sweater and a matching scarf, looking upwards with a wide smile. The girl is behind her, wearing a red cable-knit sweater and a yellow headscarf, also laughing and pointing towards the right. The background is a soft-focus, golden-brown bokeh, suggesting a sunlit outdoor setting. The overall mood is warm and happy.

A World That Nurtures Happiness.

Happiness is a state of mind truly experienced when shared with your dear ones. Here your happiness reaches greater heights as you spend each moment of joy with your special someone.



Rainwater Harvesting





EV Charging Provision

Water Softening Plant

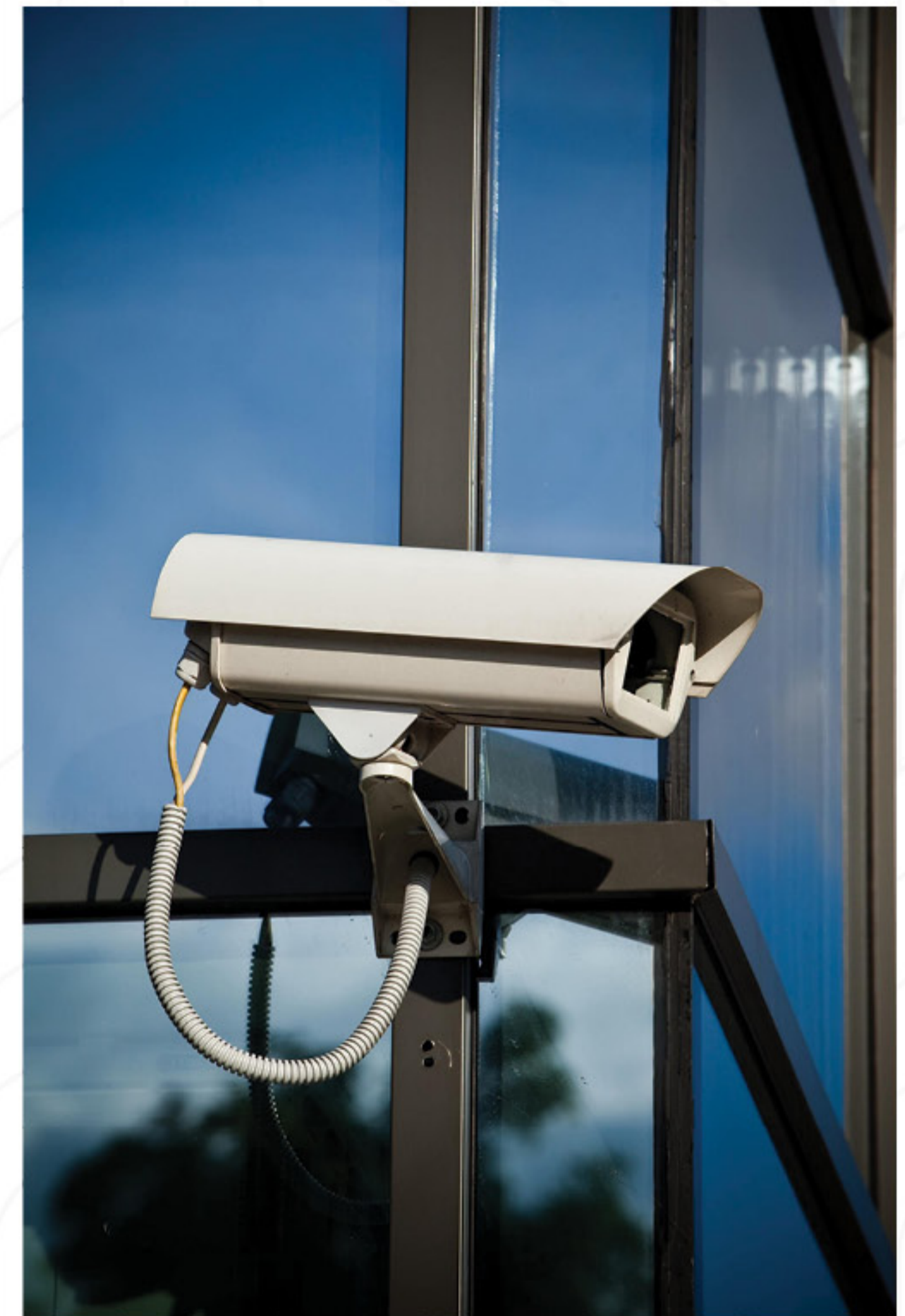
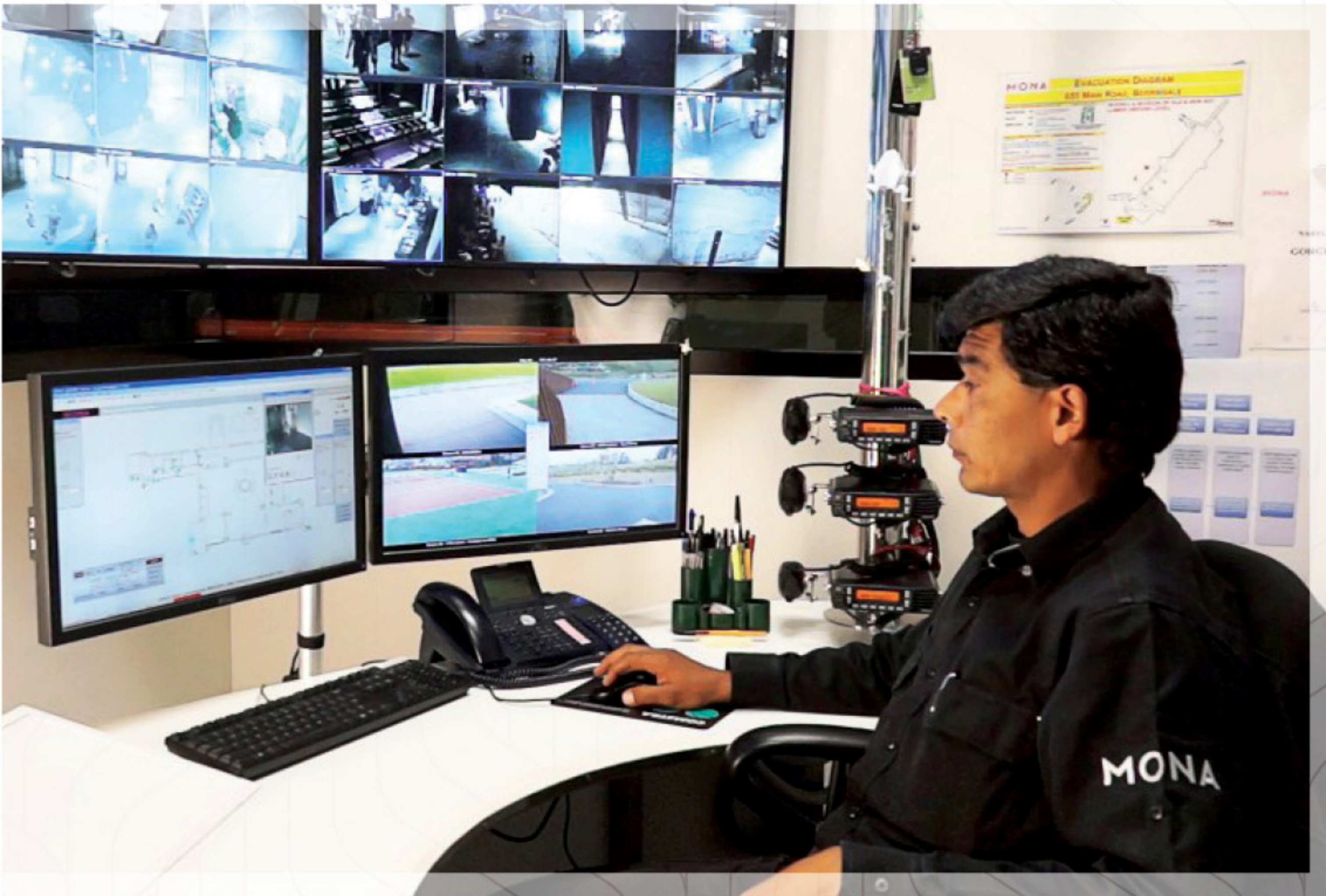




A World Orchestrated Around You And Your Loved Ones.

Here every amenity and facility is engineered around your needs and wants, letting you enjoy your desired lifestyle.





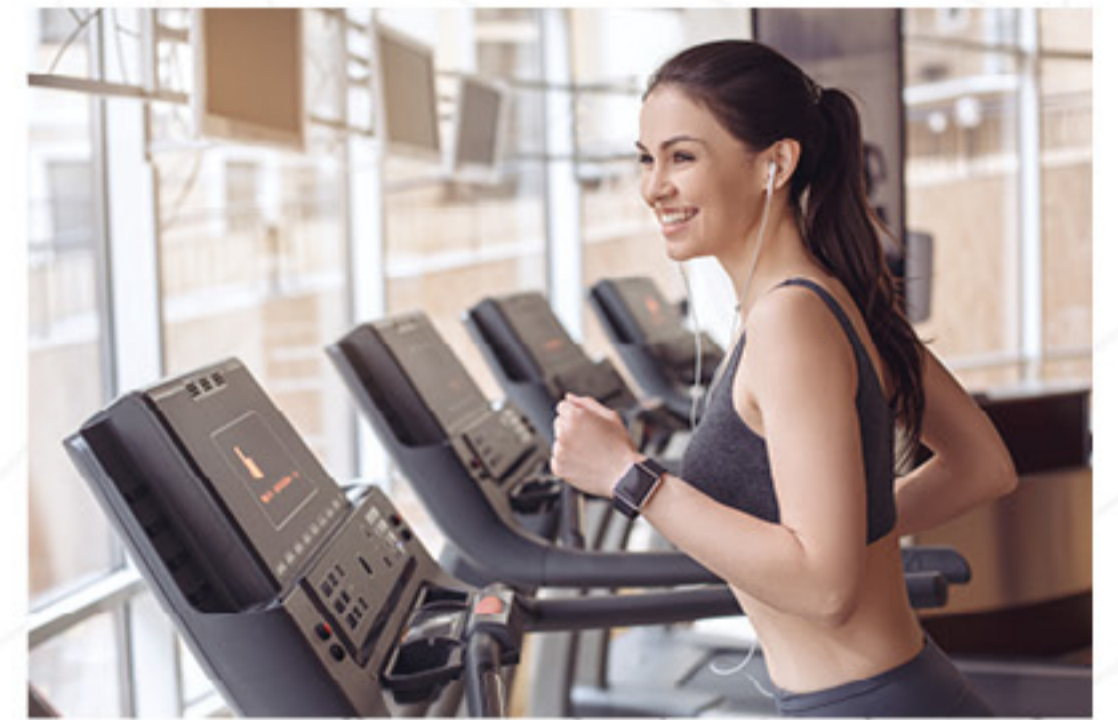
**A Home You Truly
Call A Haven.**

Your paradise on earth is a secure environment for your young ones to grow. The 24 hr security and surveillance lets us create this true haven.





A World Crafted To
Fortify You.



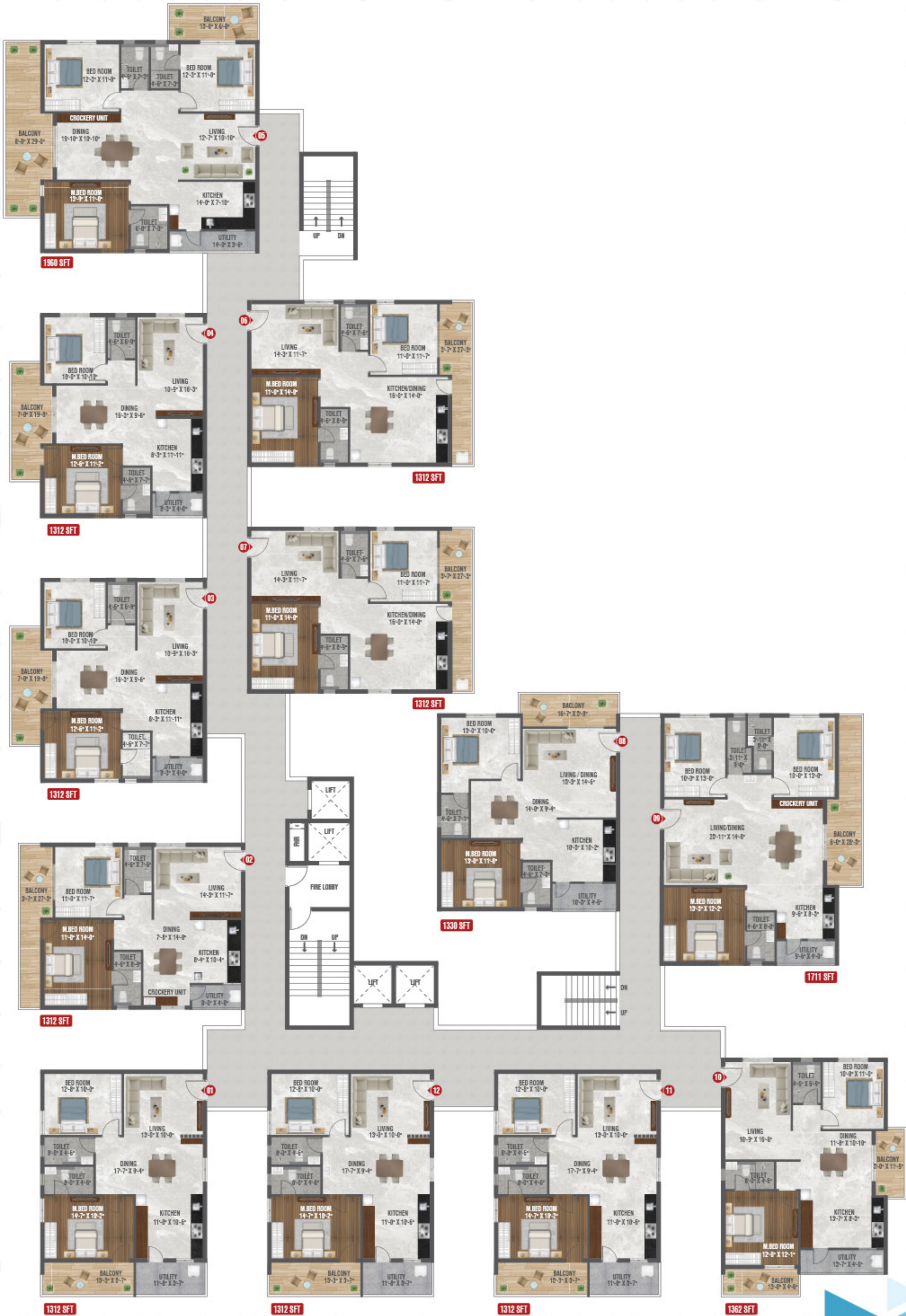
Project Overview

4 Acres, 3 Blocks,
2B+Stilt 10 Floors, 520 Flats
25000 sft G+5 Floors Clubhouse

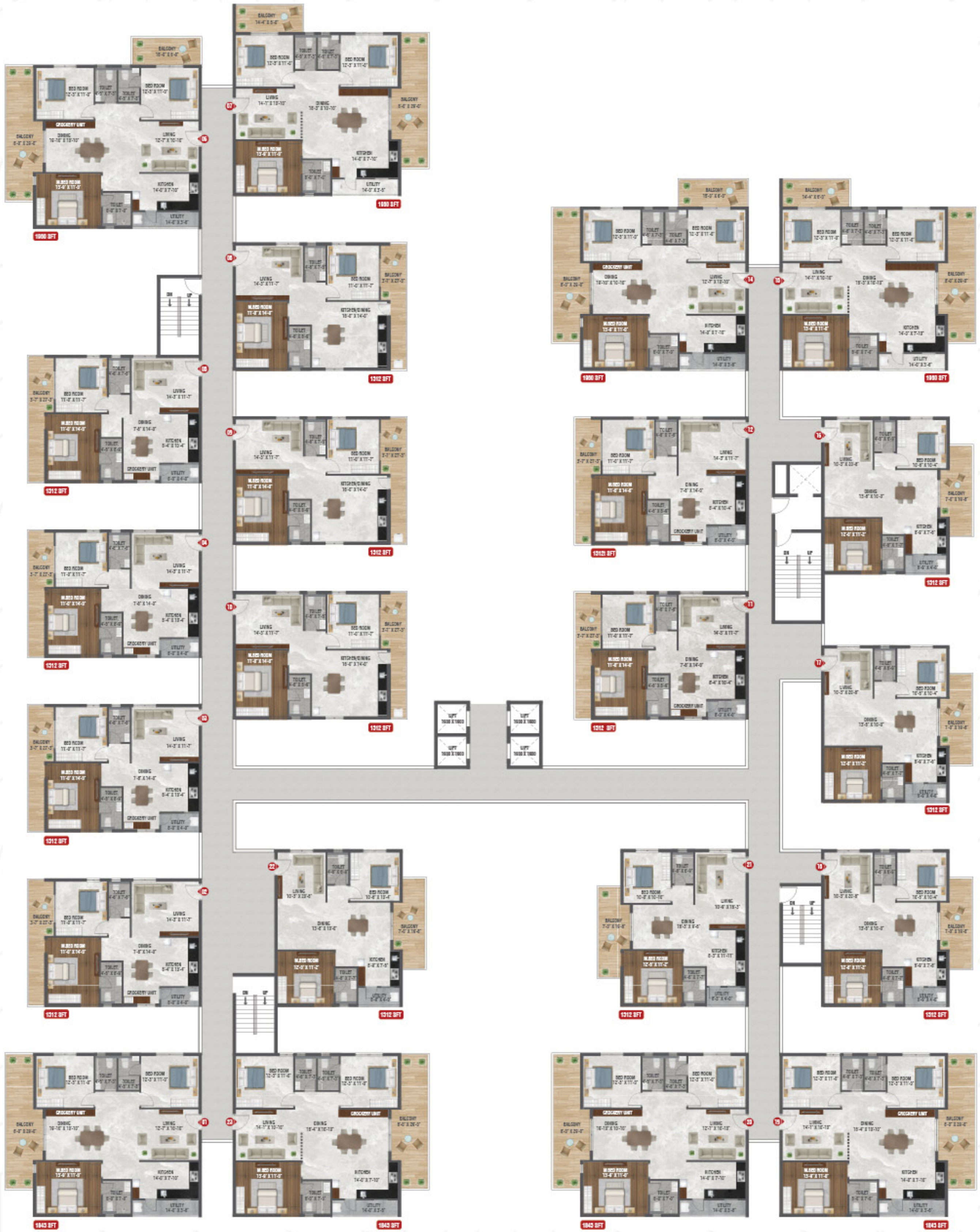
Master Plan



Typical Floor Plan Block A



Typical Floor Plan Block B





TYPICAL FLOOR PLAN - TYPE-1



1312 SFT
EAST FACING

| TOWER A | TOWER B |
|-----------|---------|
| 1, 11, 12 | - |

KEY PLAN





TYPICAL FLOOR PLAN - TYPE-2



1312 SFT
EAST FACING

| TOWER A | TOWER B |
|---------|---------|
| 3, 4 | 21 |

KEY PLAN





TYPICAL FLOOR PLAN - TYPE-3



1312 SFT
EAST FACING

| TOWER A | TOWER B |
|---------|--------------------|
| 2 | 2, 3, 4, 5, 11, 12 |

KEY PLAN





TYPICAL FLOOR PLAN - TYPE-1



1312 SFT
WEST FACING

| TOWER A | TOWER B |
|---------|----------|
| 6, 7 | 8, 9, 10 |

KEY PLAN





TYPICAL FLOOR PLAN - TYPE-2



1312 SFT
WEST FACING

| TOWER A | TOWER B |
|---------|----------------|
| - | 16, 17, 18, 22 |

KEY PLAN





TYPICAL FLOOR PLAN



1960 SFT
EAST FACING

| TOWER A | TOWER B |
|---------|---------|
| 5 | 6, 14 |

KEY PLAN





TYPICAL FLOOR PLAN



1960 SFT
WEST FACING

| TOWER A | TOWER B |
|---------|---------|
| - | 7, 15 |

KEY PLAN





TYPICAL FLOOR PLAN



1843 SFT
EAST FACING

| TOWER A | TOWER B |
|---------|---------|
| - | 1, 20 |

KEY PLAN





TYPICAL FLOOR PLAN



1843 SFT
WEST FACING

| TOWER A | TOWER B |
|---------|---------|
| - | 19, 23 |

KEY PLAN





TYPICAL FLOOR PLAN



1330 SFT
EAST FACING

| TOWER A | TOWER B |
|---------|---------|
| 8 | - |

KEY PLAN





TYPICAL FLOOR PLAN



1711 SFT
WEST FACING

| TOWER A | TOWER B |
|---------|---------|
| 9 | - |

KEY PLAN





TYPICAL FLOOR PLAN



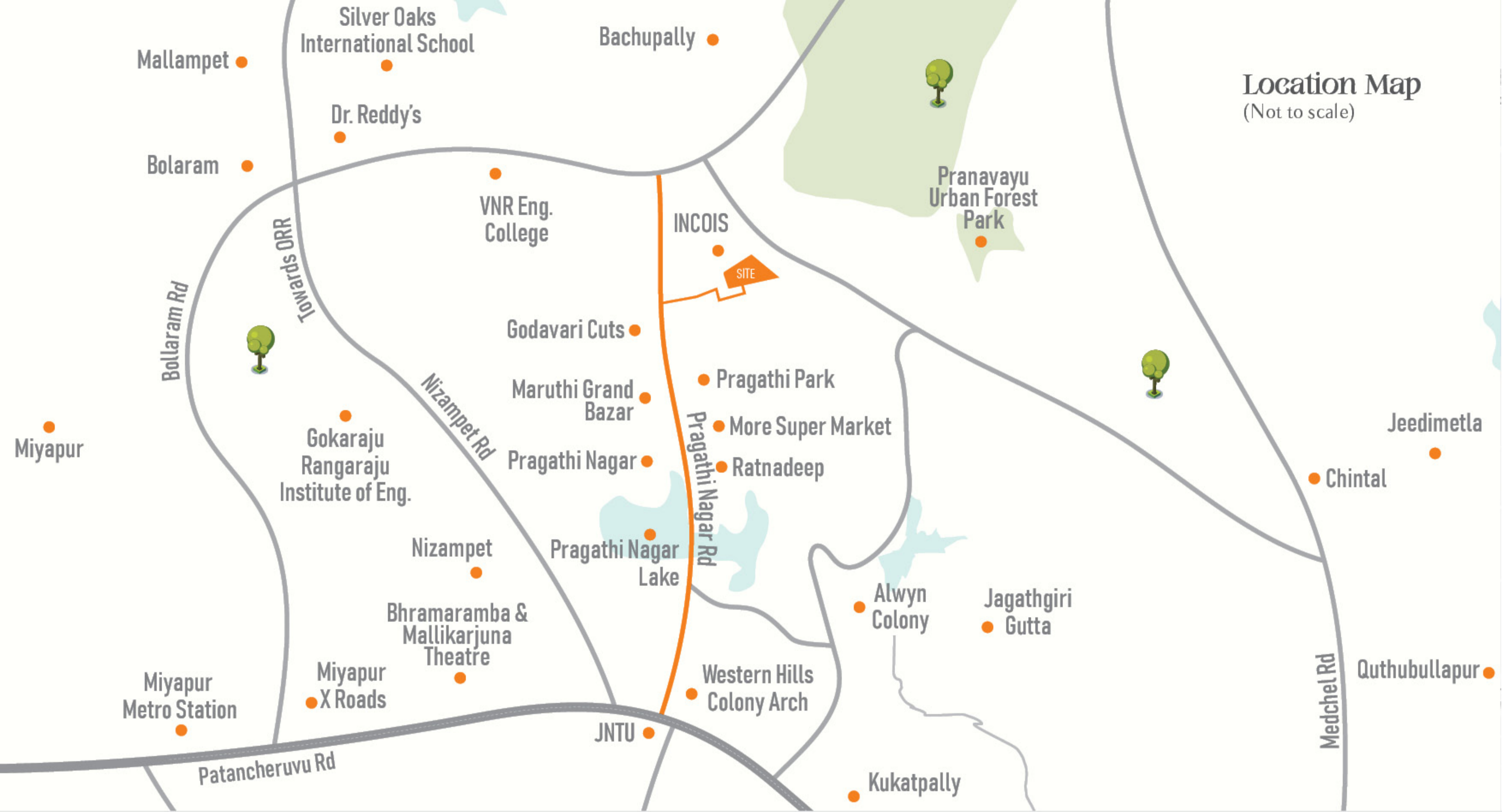
1362 SFT
WEST FACING

| TOWER A | TOWER B |
|---------|---------|
| 10 | - |

KEY PLAN



Location Map
(Not to scale)



Nearby Locations

- EDUCATIONAL INSTITUTES:** KENNEDY GLOBAL SCHOOL
- SILVER OAKS SCHOOL
 - DELHI PUBLIC SCHOOL
 - OAKRIDGE INTERNATIONAL SCHOOL

- MNC'S:** HITECH CITY • GACHIBOWLI • KONDAPUR
- SHOPPING MALLS:** INORBIT MALL • IKEA • SUJANA FORUM MALL • MANJEERA MALL • AMB MALL • ASIAN GPR
- HOSPITALS:** MAMATHA MEDICAL COLLEGE AND HOSPITAL • SLG HOSPITAL • RELIEF HOSPITAL • MALLA REDDY HOSPITALS
- NEARBY LANDMARKS:** ORR • MIYAPUR X ROAD • MIYAPUR METRO STATION • JNTU

CLICK FOR LOCATION

