

## On Going Projects:



**NAVYA VAZEER ESTATE  
COMMERCIAL MALL AT LB NAGAR**



**NAVYA GRUHA  
AT S.R.K. PURAM, KOTHAPET**



**NAVYA KUTEER I & II  
AT KONDAPUR**



**NAVYA LOTUS  
AT PHANIGIRI COLONY**



**NAVYA PEARL  
AT SAMATHAPURI COLONY**



**NAVYA JUBILANT  
AT FILM NAGAR**



**NAVYA GARDENIA  
AT KAMALAPURI,  
SRI NAGAR COLONY.**



**NAVYA NEST  
AT KONDAPUR**



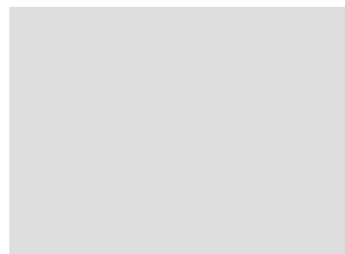
**NAVYA CLASSIC A & B  
AT UPPAL BHAGATH**



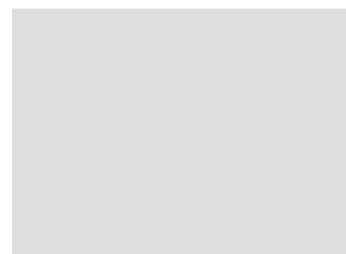
**NAVYA ELEGANCE  
AT KONDAPUR**

## Location Plan

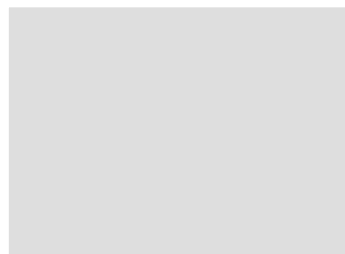
## Up Coming Projects:



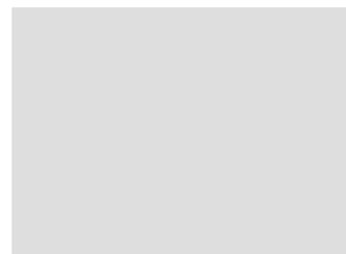
**NAVYA CHANDRA HOMES  
AT UPPAL BHAGATH**



**NAVYA METRO  
AT UPPAL BHAGATH**



**AT UPPAL BHAGATH**



**AT UPPAL BHAGATH**

## PROMOTERS:

### S.S. CONSTRUCTIONS

Flat No.101, Navya Towers,  
Road No.1, Income Tax Colony,  
SRK Puram, Kothapet, Hyderabad  
Cell No : 9849997429,  
[www.ssinfraconstructions.com](http://www.ssinfraconstructions.com)

### SITE ADDRESS:

**NAVYA PETALS** ,  
Plot No: 63A & 63B ,  
Road No: 5 ,  
Lalitha Nagar Colony,  
Nagole, Hyderabad.

NAVYA PETALS

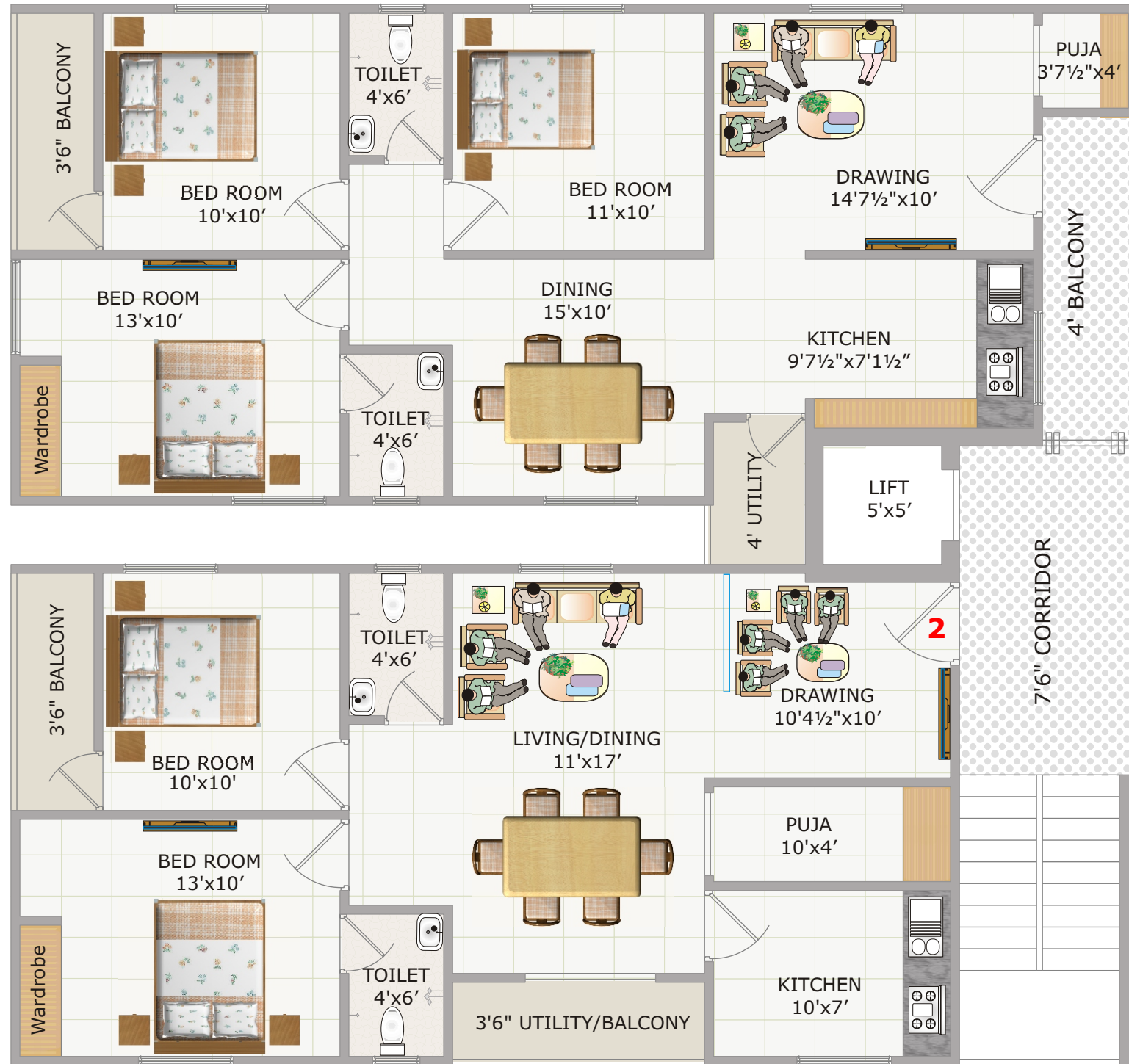
LUXURY FLATS@ LALITHA NAGAR COLONY



The new destination of high living.....

A project by  
S.S Constructions

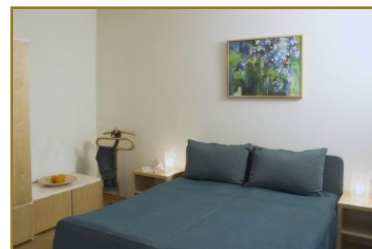
# Typical floor plan



ROAD

## AREA STATEMENT:

Flat No	Area	Type
1	1359	3BHK
2	1161	2BHK



# Specifications :

- Structure** : R.C.C. Framed structure.
- Super Structure** : Good quality bricks with cement mortar.
- Finishing** : Plastering on both sides with sponge finish and Birla/JK/wall putty luppam smooth finishing in all rooms .
- Flooring** : Vitrified Tile 800x800 in living, dining, bed rooms and kitchen. Toilets are with anti-skid tiles.
- Doors** : Main door shall be made with teak wood frame and designed Teak shutter with good safety fittings.
- Other Doors** : Teak wood frames with best quality flush doors.
- Windows** : UPVC frames with fully glazed shutters with Safety grills.
- Kitchen** : Granite platform with stainless steel sink along with wall cladding upto 2 feet with glazed tiles.
- Toilets** : Standard Ceramic tiles flooring and glazed tiles dadoing upto 6'0" height, E.W.C. of **Cera, Hindware** or equivalent make with good quality sanitary fitting.
- Painting** : **Internal walls** : Luppam finish in hall, dining and bed rooms with emulsion paint. **External wall** : Water proof emulsion paint equivalent to apex or weather coat.
- Electrical** : Common electrical points with concealed copper wiring of Polycab, Finecab or equivalent make with modular switches, AC point, Geyser point, socket for T.V., Fridge, Grinder, Internet point & Inverter point of Anchor or equivalent make.
- Water** : Individual water connection from overhead tank .
- Plumbing** : Concealed piping with good quality fittings **of plumber, Jaquar** or equivalent make. Tube well water through over head tank .
- Lift** : Six passenger lift of standard make.
- Note** : Provision for wardrobes, shelves, lift, car parking for extra cost. Registration, GST as per Govt. Norms. Persons desiring to alter/ modify their flat shall inform the same at the time of booking and sign the request for modification form.