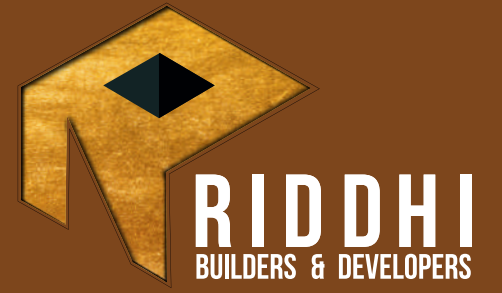


Riddhi's Taranto

📍 Patighanpur, Kollur

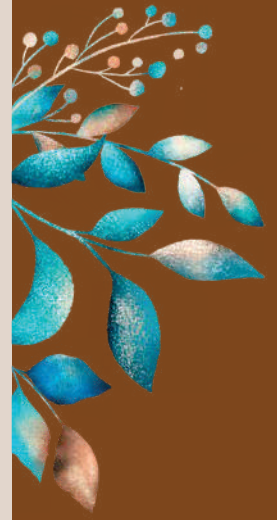


Step into the *World of*
Luxury Lifestyle



Welcome To Your New Home





*Home is where love resides, memories are created,
friends always belong, and laughter never ends*

Riddhi Builders is a trusted name in the real estate universe of Hyderabad. Backed by almost one decade of construction experience and a portfolio of exceptional projects, Riddhi Builders offers the best to its clientele - best location, best price, best infrastructure, best amenities and best quality in its residential and commercial projects.

The company's commitment to timelines and ethical approach makes every Riddhi project a destination to look out for.



Riddhi's Taranto is the finest destination for good living and an exceptional investment opportunity at Patighanpur, Kollur. These apartments are conceived as premium quality and designed to offer supreme value.

It is a world that matches your dreams and you will cherish a world of subtle nuances and caring gestures. Riddhi's Taranto is also a home that answers your needs - spoken and unspoken.



An Artistic Impression of **Taranto Entrance View**



**Riddhi's
Taranto**



Entrance
Feature with
**Buddha
Statue**



Project Highlights

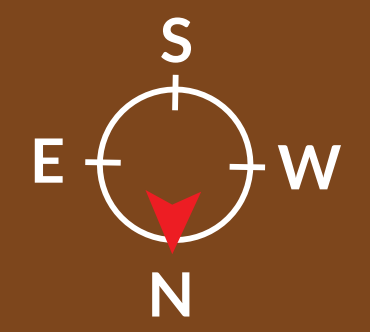
- ✦ HMDA & RERA Approved
- ✦ Total Area - 2.5 Acres with 100 Feet Main Road Facing
- ✦ Total Flats - 336
- ✦ Total Floors - 2 Cellar + Stilt for Car parking +15 Floors
- ✦ 2, 2+ Study & 3 BHK Flats Available
- ✦ Premium Club House with Swimming Pool
- ✦ More Capacious
- ✦ Vastu Compliant Units



Master Plan

Legend

- 01 Entry / Exit
- 02 Entrance plaza flooring
- 03 Jogging track
- 04 Driveway
- 05 Children's play area
- 06 Lush green lawn
- 07 Designer pergola
- 08 Badminton court
- 09 Seating plaza
- 10 Cricket practise pitch
- 11 Main pool
- 12 Open fitness
- 13 Wooden deck
- 14 Half basketball court
- 15 Lawn with seating benches
- 16 Lush green lawn
- 17 Transformer
- 18 Gas bank
- 19 Buddha sculpture with water feature
- 20 Kids pool



Club House

First Floor Plan

Flat No.	Size in Sq. ft & Facing	BHK
06	1209 - N	2
07	1209 - N	2
08	1015 - N	2
09	1732 - W	3
10	1203 - W	2
11	1203 - W	2
12	1203 - W	2
13	1203 - E	2
14	1203 - E	2
15	1203 - E	2
16	1203 - W	2
17	1538 - W	3
18	1650 - E	3
19	1650 - E	3

Club House Area - 13917 Sq. Ft.

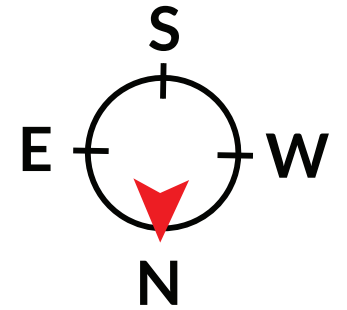
Note: First Floor has 14 Flats and Club House





Typical
Second to Fifteenth Floor

Flat No.	Size in Sq. ft & Facing	BHK
01	2042 - E	3
02	1305 - N	2.5
03	1305 - N	2.5
04	1305 - N	2.5
05	1310 - N	2.5
06	1305 - N	2
07	1305 - N	2
08	1154 - N	2
09	1962 - W	3
10	1378 - W	2.5
11	1378 - W	2.5
12	1378 - W	2.5
13	1386 - E	3
14	1296 - E	2
15	1203 - E	2
16	1203 - W	2
17	1738 - W	3
18	1916 - E	3
19	1822 - E	3
20	1304 - W	2
21	1511 - W	3
22	1916 - E	3
23	1822 - E	3



Riddhi's Taranto

Club House Amenities

Creche
Room



Yoga



Dedicated Work Space



Library



Reception



Banquet Hall



Indoor Games



Gym



Riddhi's Taranto

Wide Drive Ways



Outdoor Amenities

- ✦ Swimming pool/kids pool
- ✦ Pergolas / Sitting Plaza
- ✦ Designer TOT-LOT / Senior Citizen Sit-outs
- ✦ Lush green lawn
- ✦ Badminton Court
- ✦ Half Basket Ball Court
- ✦ Cricket Practice pitch
- ✦ Children Play Area
- ✦ Wide drive ways
- ✦ Jogging Track



Pergolas



Lush green lawn



Designer Tot-Lot

Half Basketball Court



Badminton Court



Entrance Plaza



 **Luxury Lifestyle**



Specifications



Foundation & Structure – Shell
Earthquake resistant R.C.C framed structure.

Super Structure
9” external wall and 4.5” internal wall of cement blocks/Red bricks.

Finishes –Internal
Smooth plastered surface, treated with lappam putty and painted with acrylic emulsions over a coat of primer.

Finished - External
Smooth plastered surface, treated with lappam putty/texture and painted with emulsions.

Common Area/Elevation
Smooth plastered surface treated with lappam putty/texture and painted with emulsion.



Doors

Main Door
Aesthetically designed flush door with veneer and melamine polish, and fitted with hardware and locking systems of reputed make.

Other Doors
Aesthetically designed flush door with veneer and melamine polish on both sides, and fitted with hardware and locking systems of reputed make.

Balcony Doors
UPVC sliding or openable shutter with float glass panels.

Windows
UPVC sliding or openable shutter with float glass panels.



Kitchen
Granite platform with Frankie or equivalent stainless steel sink and provision for water purifier.

STP & WTP
STP treated water can be used for Landscaping and flushing purpose.
Borewell water will be treated through water softening plant to reduce the hardness for bathing and washing.



Flooring
Hall, Bedroom, Kitchen - vitrified tiles (800 x 800mm) from Somany or Kajaria



Tile Dadoing
Kitchen
Glazed ceramic tile dado upto 2 feet height above kitchen platform.

Toilet
Ceramic tile (600 x 1200 mm) dado upto door height of Somany or Kajaria or of an equivalent make.

Utility/Wash
Ceramic tile dado upto 3 feet height of Somany or Kajaria or of an equivalent make.



Supply of gas from centralized gas bank to all individual apartments with prepaid meters.



Fittings

Bathroom Fitting
All CP fittings of Jaquar or of an equivalent make.

Ceramics
Wall mounted EWC. All ceramics of Jaquar or of an equivalent make.



Generator
Back-up generator for common areas, lifts, entire apartment except geyser and air conditioner.



Fire Safety
Fire sprinkler system in all apartments, all floor corridors and basements.



Lifts
Kone/Johnson or equivalent make.



Parking
Covered parking space.



Electrical
Concealed copper wiring of Finolex/Polycab equivalent make.

Modular switches/sockets of Anchor/ Legrands/Havells/GM.

Air conditioner points in all bedrooms and geyser points in all toilets.

Plug points provided for cooking range, chimneys, refrigerator, microwave oven/mixer/grinder in kitchen.



Playzone
Children’s play area.
Sit-out
Greenery / Landscape.



Communication
Provision for telephone points in master bedroom and drawing area.
Provision for internet and cable connection in master bedroom and drawing area.



Ongoing Projects



Riddhi Laxman County (58 Villas) - Tukkguda, Near Airport



Riddhi Pramukh Elegance (144 Flats) - Suchitra, Kompally

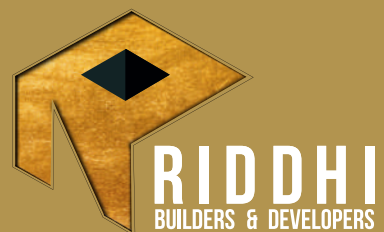
Upcoming Projects



Riddhi Orchid (160 Flats) - Attapur, Pillar No-179



Riddhi Blooming Bird (208 Flats) - Tellapur



LOCATION MAP

(Not to scale)



Location Highlights

- 3 kms to upcoming TATA Organization
- 6 kms to upcoming IT Zone kollur to Edunagulapalli
- 18 kms to Financial District IT Hub

Near by Schools & Colleges

- 1 kms to Gaudium International school
- 1 kms to Narayana IIT Boys & Girls
- 2 kms to Candiidus International school
- 4.5 kms to Samashti International school
- 6 kms to Origin International school
- 7 kms to Manthan International schools
- 8 kms to Meru International school
- 8 kms to Ellenki college Engineering & Techology
- 10 kms to Birla open minds International school

Near by Hospitals

- Indira Hospital
- Vaishnavi Hospital
- Tirumala Hospital - Multispeciality
- Sri Pallavi Hospital
- Annapurna Hospital
- Pranam Hospital
- Citizen Hospital
- Continental Hospital



RIDDHI HABITATS LLP

Office : Flat No. 1 & 2, 2nd Floor, Ashok Asha Adobe Apartment,
Road No. 12, Kimtee Enclave Lane,
Banjara Hills, Hyderabad - 500 034.

Site Address : Suvery No 202, Pati Ghanpur,
Kollur, Patancheru, Telangana - 502 324.

702 2033 002

Website : www.riddhitaranto.com

Marketed By
ceyone[®]

Agent RERA No.: A02200002211

*Disclaimer: This brochure is purely conceptual presentation and not a legal offering. The developer reserves the right for alterations if any.