



SREEVAARI
PRIDE

3 BHK LUXURY LIFE @ KOMPALLY

A Project by  **KSN INFRA**



KSN Infra are reputed builders who have several prestigious projects to their credit.
Sreevaari Pride is just 100 mts, from Kompally 'X' Roads.



SREEVAARI
PRIDE

3 BHK LUXURY LIFE @ KOMPALLY

SREEVAARI PRIDE



*Sreevaari Pride welcomes you to
Premium residential gated community*



an artistic impression of Sreevaari Pride bird eye view



*An experience that turns up
the volume on stately living*

Wrap yourself in contemporary lifestyle at **SREEVAARI PRIDE**, an experience that turns up the volume on stately living. It's the combination of quality and design through which a superiorly aesthetic space is born. A prime example of masterfully crafted flow and a modern take on urban sophistication - the clear-cut, clean lines of the interiors look classic yet fresh. Simply nestle into the lively ambience and cherish quiet moments of relaxing contemplation.



- Legend
- A. Grand Entrance
 - B. Drive Way
 - C. Jogging Track
 - D. Seating area
 - E. Play area
 - F. Security Room
 - G. Sand Pit
 - H. Tot-Lot
 - I. Block-A
 - J. Block-B



GRAND
ENTRANCE

INDOOR
GAMES

MULTI-PURPOSE
HALL

ZERO

VEHICLE MOVEMENT
IN GROUND FLOOR

TOTAL 135+
INDEPENDENT
UNITS

100%

VAASTHU

AMPLE

CAR PARKING

12,616 SFT
OF AMENITIES

4

LIFTS
BLOCK -A

2

LIFTS
BLOCK -B

BLOCK TO BLOCK
22 FT DISTANCE

2C+G+5
STOREY TOWERS

SOLAR FENCING
AROUND THE COMPOUND WALL

DESIGNER
LANDSCAPE

24/7

SECURITY

VIDEO DOOR
PHONE

Wide
driveways

INDOOR SWIMMING POOL





an artistic
impression of
Sreevaari Pride
Kitchen view



an artistic
impression of
Sreevaari Pride
Dining view



an artistic
impression of
Sreevaari Pride
Living room view



an artistic
impression of
Sreevaari Pride
Living room view



an artistic
impression of
Sreevaari Pride
Bedroom view

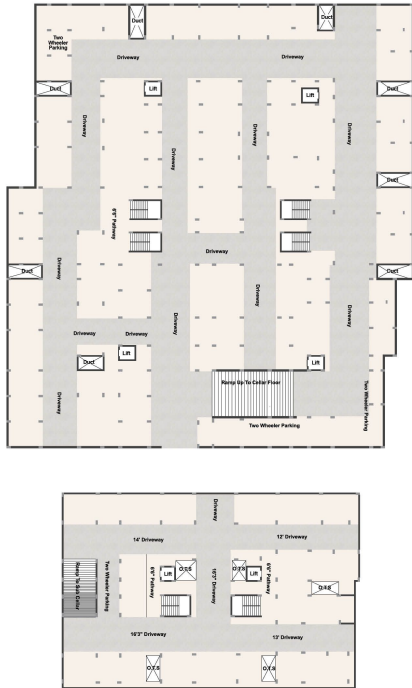


an artistic
impression of
Sreevaari Pride
Bedroom view

Cellar
Floor Plan



Sub Cellar
Floor Plan



an artistic impression of Sreevaari Pride Night view



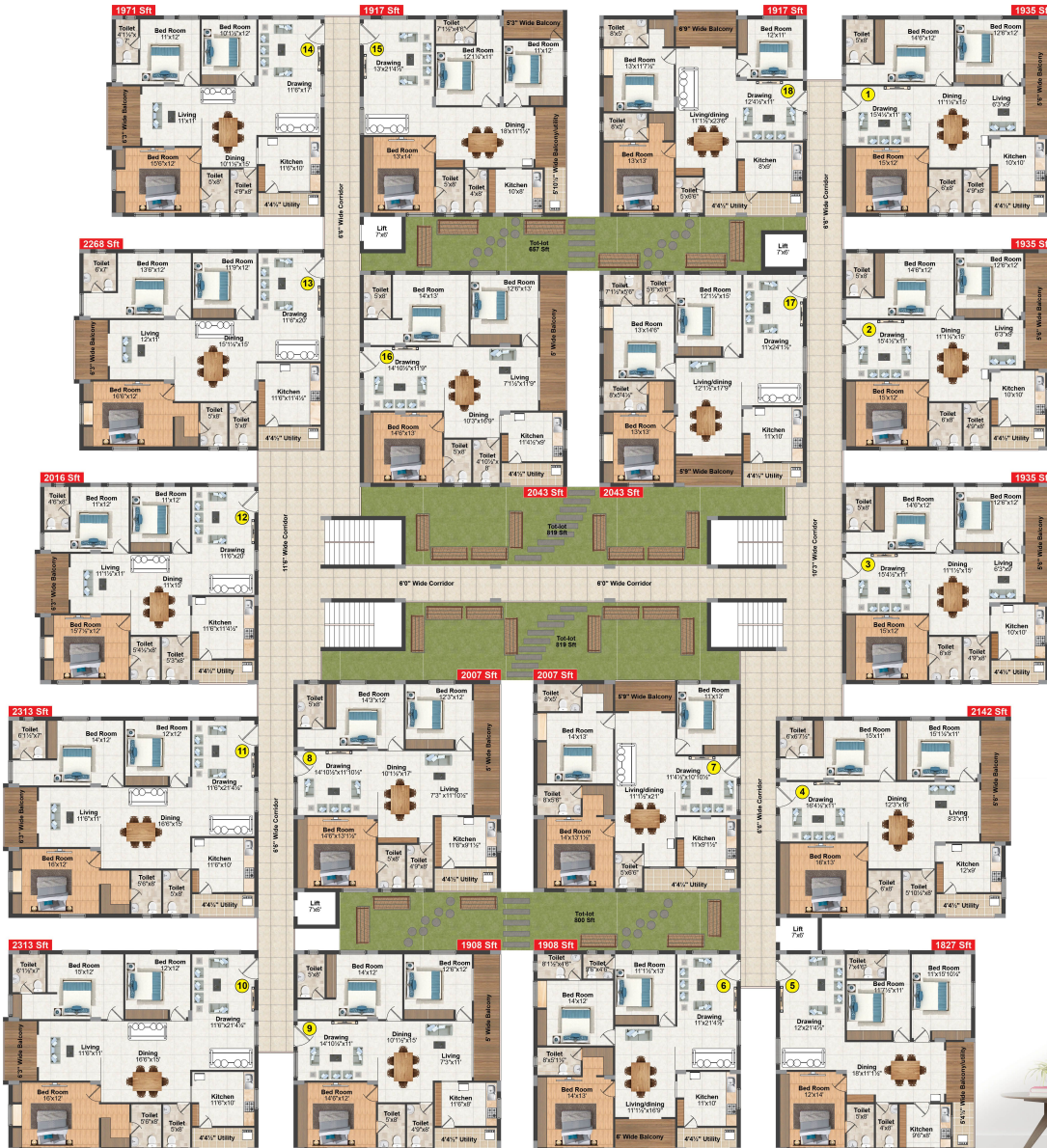
Block-A Typical Floor Plan

Block-A Area Statement

| Flat No. | Unit | Facing | Unit Saleable Area (Sft) |
|----------|------|--------|--------------------------|
| 1 | 5BHK | WEST | 1935 |
| 2 | 5BHK | WEST | 1935 |
| 3 | 5BHK | WEST | 1935 |
| 4 | 5BHK | WEST | 2142 |
| 5 | 5BHK | WEST | 1827 |
| 6 | 5BHK | EAST | 1908 |
| 7 | 5BHK | EAST | 2007 |
| 8 | 5BHK | WEST | 2007 |
| 9 | 5BHK | WEST | 1908 |

Block-A Area Statement

| Flat No. | Unit | Facing | Unit Saleable Area (Sft) |
|----------|------|--------|--------------------------|
| 10 | 5BHK | EAST | 2315 |
| 11 | 5BHK | EAST | 2315 |
| 12 | 5BHK | EAST | 2016 |
| 13 | 5BHK | EAST | 2268 |
| 14 | 5BHK | EAST | 1971 |
| 15 | 5BHK | WEST | 1917 |
| 16 | 5BHK | WEST | 2043 |
| 17 | 5BHK | EAST | 2043 |
| 18 | 5BHK | EAST | 1917 |



Block - B Typical Floor Plan

Block - B Area Statement

| Flat No. | Unit | Facing | Unit Saleable Area (Sft) |
|----------|------|--------|--------------------------|
| 1 | 3BHK | WEST | 2304 |
| 2 | 3BHK | WEST | 2025 |
| 3 | 3BHK | EAST | 2079 |
| 4 | 3BHK | EAST | 2232 |
| 5 | 3BHK | EAST | 2232 |
| 6 | 3BHK | EAST | 2079 |



an artistic impression of Sreevaari Pride Living and Dining view



AMENITIES FLOOR PLAN

12,616 Sft



Waiting Lounge



Office



Spa



Multi-Purpose Hall



Swimming Pool



Cafeteria



Gym



Yoga



An abode of leisure and relaxation



SPECIFICATIONS

STRUCTURE

R.C.C Framed structure. Red brick or 9" for exterior walls and 4½" thick for internal walls. External cement plastering.

FLOORING

800 X 800 mm vitrified tiles for flooring for hall, bedrooms, dining, kitchen and balcony. Anti-skid tiles in toilets.

STAIRCASE & CORRIDORS

Granite flooring for staircase and corridor. S.S railing for staircase.

PAINTING

Internal: Two coats putty and two coats of Plastic emulsion paint / equivalent emulsion paint make over a base coat of primer in all rooms.

External: Asian Apex / equivalent paint make with wall care putty and texture.

Common area: Plastic emulsion / equivalent emulsion .

TILE CLADDING & DADOING

Toilets: Good quality designer ceramic tile dado up to 7'-0".

Kitchen: Glazed ceramic tile dado up to 2'-0" height above kitchen platform.

Utility / Wash: Glazed ceramic tiles dado up to 3'-0" height.

DOORS & WINDOWS

Main door: Teak frame with designer Teak veneer shutter with melamine polish with Brass/S.S fittings.

Internal door: Teak wood frames with designer flush doors / WPVC doors.

Balcony : U.P.V.C sliding doors with float glass.

Windows: U.P.V.C sliding Windows and safety grills with float glass and mosquito mesh.

Bathrooms: WPC frame with shutters

LIFTS

6 passenger lifts (Johnson / Kone / equivalent make.)

KITCHEN

Black granite platform with stainless steel sink, provision for chimney, water purifier, microwave oven and washing machine in utility area.

TOILETS

All toilets consists of

- E.W.C (C.P coated CERA or Hind ware or equivalent make.)
- Hot & cold wall mixer with shower provision for geyser in all bathrooms.
- All fixtures are C.P coated CERA or jaguar or equivalent make.

ELECTRICAL

- 3 phase power supply for each flat. Concealed conduits with good quality copper wire. Reputed make.
- Modular electrical switches : Legrand or equivalent.
- One miniature circuit breaker (MCB) for each room.
- Points for geyser in toilets, washing machine in utility, refrigerator in kitchen or dining.
- Microwave oven point in kitchen.
- Air conditioner point in all bedrooms, Hall and Dining.
- TV and telephone point in living and dining, internet point provision in children's bedroom.

SECURITY

Intercom facility from flat to flat and flat to security.

BACKUP GENERATOR

Generator will be provided for all common services.

NOTE

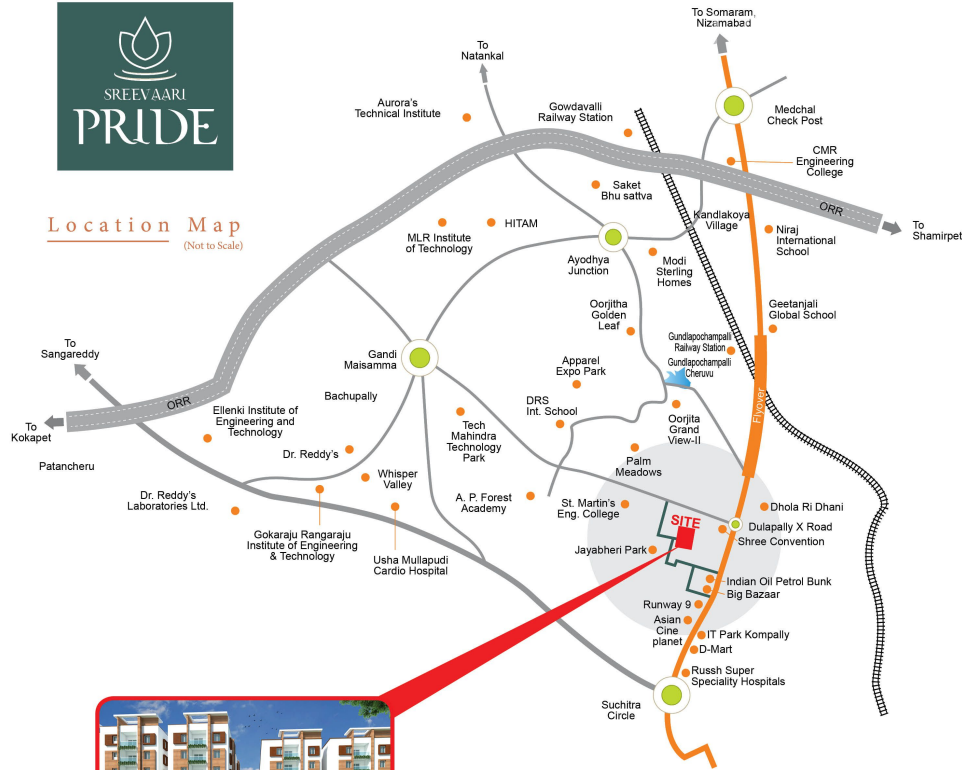
- Flat will be handed over for wood work / interiors after receiving 100% payment only, subject to payment of facilitating cost as may be decided by builder.
- Shelf's, Lofts, Chajja's and extra electrical points are optional with extra cost.
- GST and Registration charges as applicable to be borne by the purchaser only as per the prevailing rates.

FEATURES





Location Map (Not to Scale)



Scan this QR code to view the site
Google Coordinates

Accessibility

Connected to Rail & Road

- Bolarum Railway Station – 12 Mins
- Outer Ring Road – 14 Mins
- Secunderabad Railway Station – 38 Mins

Connected to Hospitals

- Ram Hospitals – 21 Mins
- Narayana Hridayalaya – 21 Mins
- Usha Mullapudi Cardiac Center – 34 Mins

Connected to Schools

- St. Ann's High School – 19 Mins

Connected to Colleges:

- Malla Reddy College of Eng. & Technology – 21 Mins
- Narasimha Reddy Engineering College – 21 Mins
- St. Peters Engineering College – 23 Mins
- St. Martin's Engineering College – 6 Mins
- CMR Engineering College – 19 Mins
- Siva Sivani Management College – 6 Mins
- Loyola College – 15 Mins

Connected to Industries

- Jeedimetla Industrial Estate – 16 Mins
- Medchal Town – 23 Mins

Connected to IT Hubs

- Upcoming IT Towers Kompally – 7 Mins
- Mahindra Satyam Training & Development Center – 27 Mins

Connected to Shopping Centres

- Big Bazaar – 3 Mins
- DMart – 7 Mins
- Reliance Trends – 5 Mins
- Decathlon – 10 Mins

Connected to Entertainment

- Dhola-Ri-Dhani – 7 Mins
- Shree Convention – 4 Mins
- Cine Planet (Multiplex) – 5 Mins
- Runway 9 (Go Karting) – 4 Mins
- Diwan Dhaba & other famous Hyd Dhabas – 8 Mins

New Twin
IT Towers
Kompally



SHREE
CONVENTION



BIG BAZAAR



RUNWAY 9
(GO KARTING)

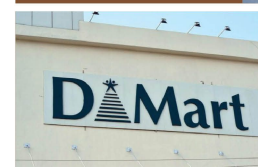


ST. MARTIN'S
ENGINEERING COLLEGE



D Mart

D MART



A Project by



KSN INFRA

Survey No. 136 & 137,158,138 Srinivas Nagar Colony
Opp. Jayabheri Park, Kompally, Hyderabad - 500 100.

e - m a i l - k s n i n f r a 3 @ g m a i l . c o m

Contact Us : 9440 44 3355, 98660 88449

Project Consultant



BROCHURE DESIGN BY



NOTE : This brochure is only a conceptual presentation of the project and not a legal offering. The promoters reserve the right to make changes in plans, specifications and elevation as deemed fit.
DISCLAIMER : The information provided in the brochure (including any images, brochures, plans etc) is for informational purposes only and you shall not rely or depend on such information for the purpose of making any purchase in any of our projects. The information in the brochure does not constitute an invitation to purchase, advertisement, marketing or offer for sale of any of the units in our projects. We will be taking steps for registration of the project in accordance with the Real Estate Regulation Authority Act, 2016 as soon as the authority is constituted.