

## On Going Projects:



**NAVYA VAZEER ESTATE  
COMMERICAL MALL AT LB NAGAR**



**NAVYA GRUHA  
AT S.R.K. PURAM, KOTHAPET**



**NAVYA KUTEER I & II  
AT KONDAPUR**



**NAVYA PEARL  
AT SAMATHAPURI COLONY,  
NAGOLE.**



**NAVYA GREEN  
AT SRINAGAR COLONY**



**NAVYA JUBILANT  
AT FILM NAGAR**



**NAVYA GARDENIA  
AT KAMALAPURI,  
SRI NAGAR COLONY.**



**NAVYA NEST  
AT KONDAPUR**

## Up Coming Projects:



**NAVYA METRO  
AT UPPAL BHAGATH**



**NAVYA CLASSIC  
AT UPPAL BHAGATH**

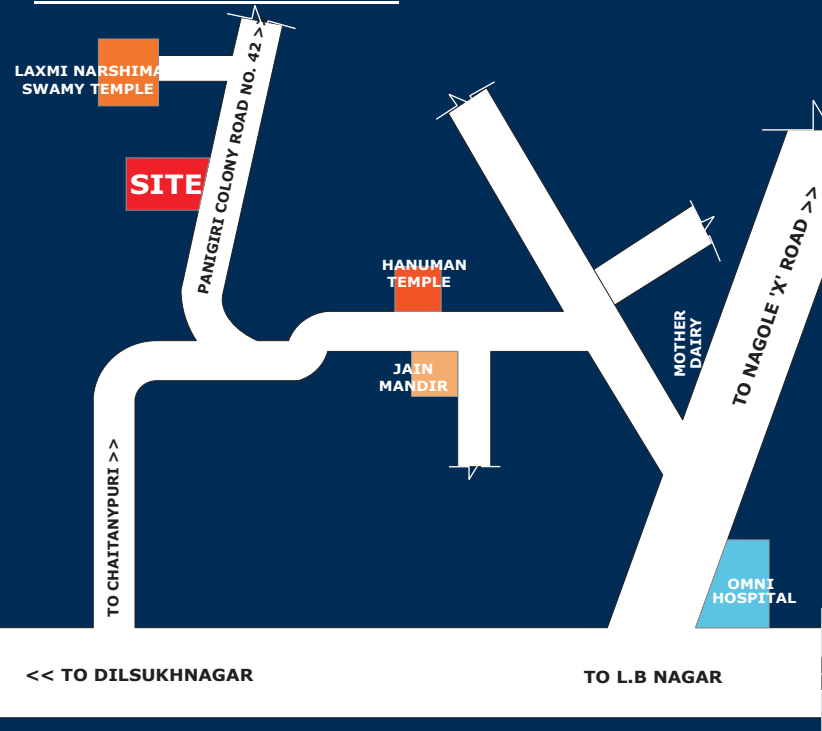


**AT LALITHA NAGAR,  
NAGOLE.**



**NEAR BOTANICAL PARK  
AT KONDAPUR**

## Location Plan



### PROMOTERS: S.S. CONSTRUCTIONS

Flat No.101, NavyaTowers,  
Road No.1, Income Tax Colony,  
SRK Puram, Kothapet, Hyderabad  
Cell No : 9849997429,  
[www.ssinfraconstructions.com](http://www.ssinfraconstructions.com)

**SITE ADDRESS:**  
**NAVYA LOTUS,**  
Plot No :20  
**PHANIGIRI COLONY,**  
Hyderabad.

NAVYA LOTUS

@ PHANIGIRI COLONY

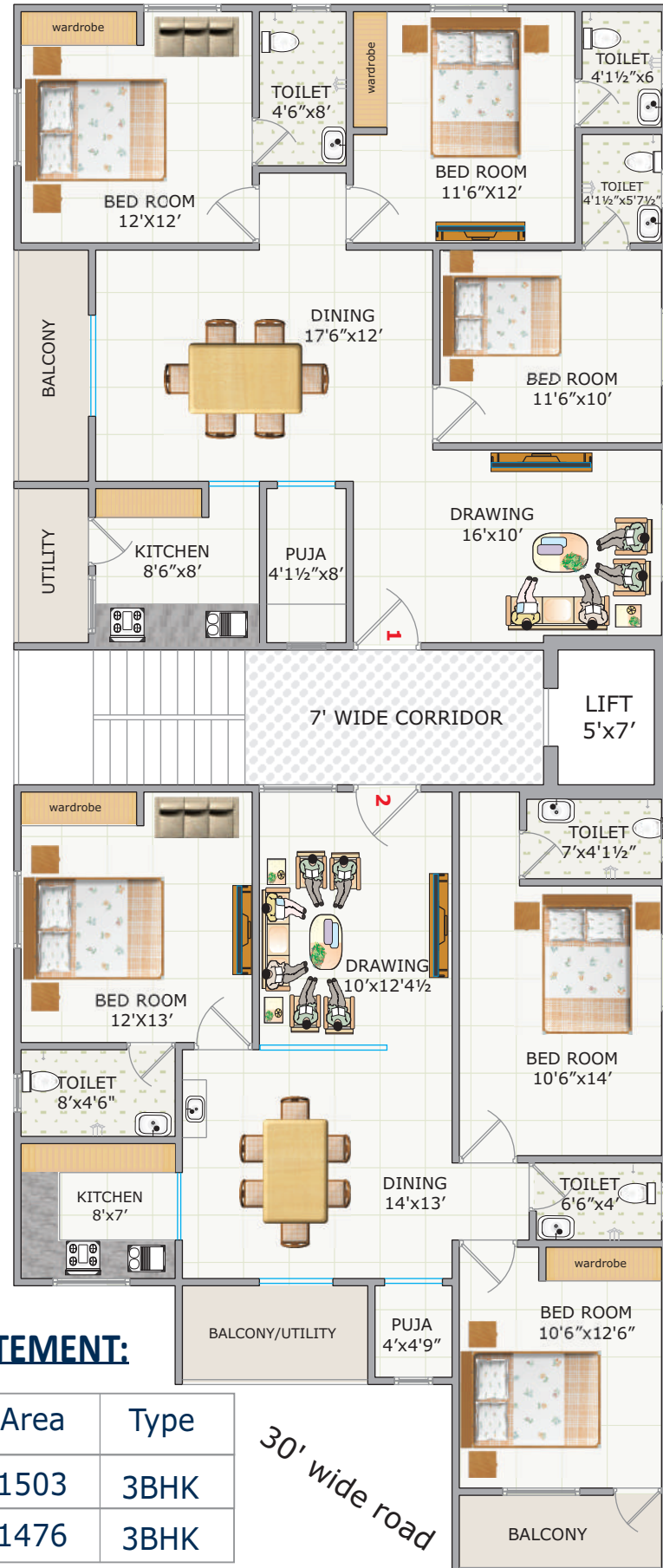


**A home for generations  
to come.....**

A project by  
**S.S Constructions**

# Typical floor plan

# Specifications :



### AREA STATEMENT:

Flat No	Area	Type
1	1503	3BHK
2	1476	3BHK

### HIGHLIGHTS

- 100% Vaastu
- All premium luxury flats
- Quality construction
- Good cross ventilation
- Prime residential area
- Peaceful, pollution free area



- Structure : R.C.C. Framed structure.
- Superstructure : Good quality bricks with cement mortar.
- Finishing : Plastering on both sides with sponge finish and birla/JK/wall putty luppam smooth finishing in all rooms.
- Flooring : **Vitrified** Tile 800x800 in living, dining, bed rooms and kitchen. Toilets are with anti-skid tiles.
- Doors : Main door shall be made with teak wood frame and designed Teak shutter with good safety fittings.
- Other Doors : Teak wood frames with best quality flush doors.
- Windows : UPVC frames with fully glazed shutters with Safetygrills.
- Kitchen : Granite platform with stainless steel sink along with wall cladding Upto 2 feet with glazed tiles.
- Toilets : Standard Ceramic tiles flooring and glazed tiles dadoing upto 6'0" height ,E.W.C. Of **Cera, Hindware** or equivalent making with good quality sanitary fitting.
- Painting : **Internal walls** : Luppam finish in hall, dining and bed rooms with emulsion paint **External wall** :Water proof emulsion paint equivalent to apex or weathercoat.
- Electrical :Common electrical points with concealed copper wiring with modular switches, AC point, Geyser point, socket for T.V.,Fridge,Grinder ,Internet point & Inverter point.
- Water : Individual water connection from overhead tank .
- Plumbing : Concealed piping with good quality fittings **of plumber, Jaquar** or equivalent making.Tube well water through overhead tank .
- Lift : Six passenger lift of standard make.
- Note : Provision for wardrobes, shelves, lift, car parking for extra cost. Registration, GST as per Govt. Norms. Persons desiring to alter/ modify their flat shall inform the same at the time of booking and sign the request for modification form.