

A project by



GREATER
INFRA

LIVE IN
THE ARDEN
OF PEACE.

GREATER INFRA'S
HONESTY
Bloom in delight



2 & 3 BHK
LUXURY APARTMENTS
@ MIYAPUR



GREATER INFRA'S
HONESTY
A GOOD AND DELIGHT



GET MORE
FROM LIFE FOR
A LIFETIME.

Greater Infra's Honesty is located at Miyapur, which is at a good distance from the buzz of the city life of Hyderabad, here's a multi-storied and multi-block community that's set out to be a world in itself. So that you come back to a life of peace, always.



TYPICAL FLOOR PLAN



SPACES DESIGNED FOR PLENTY OF CALM.

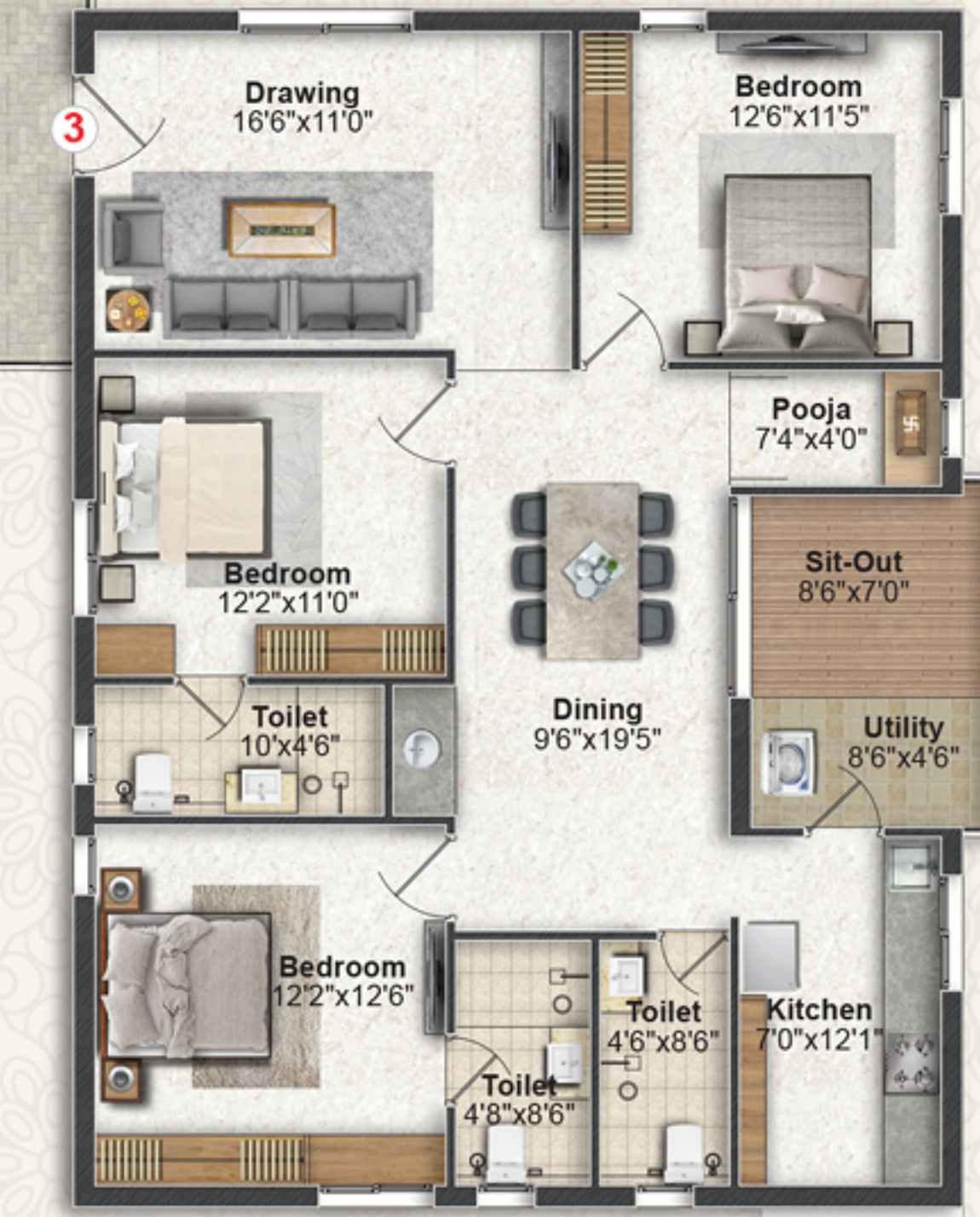
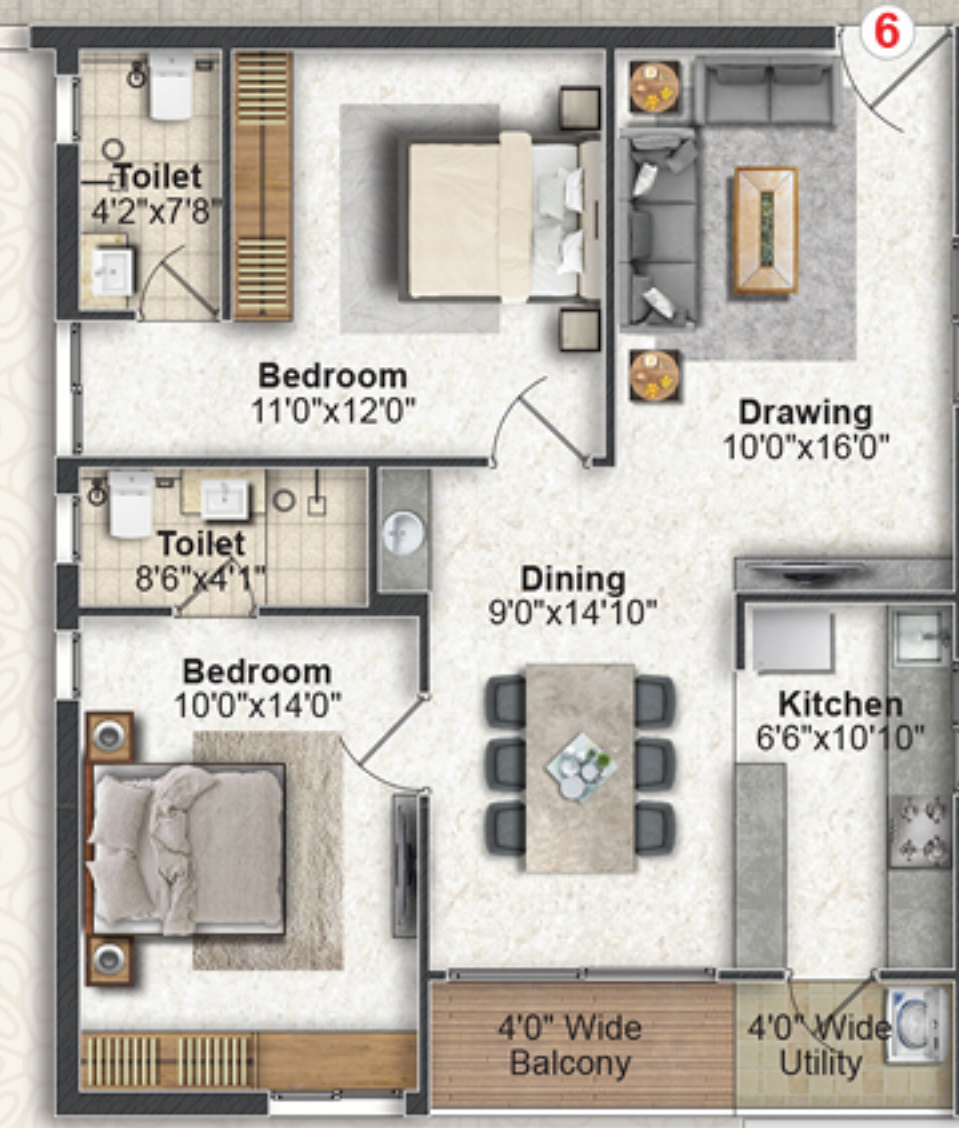
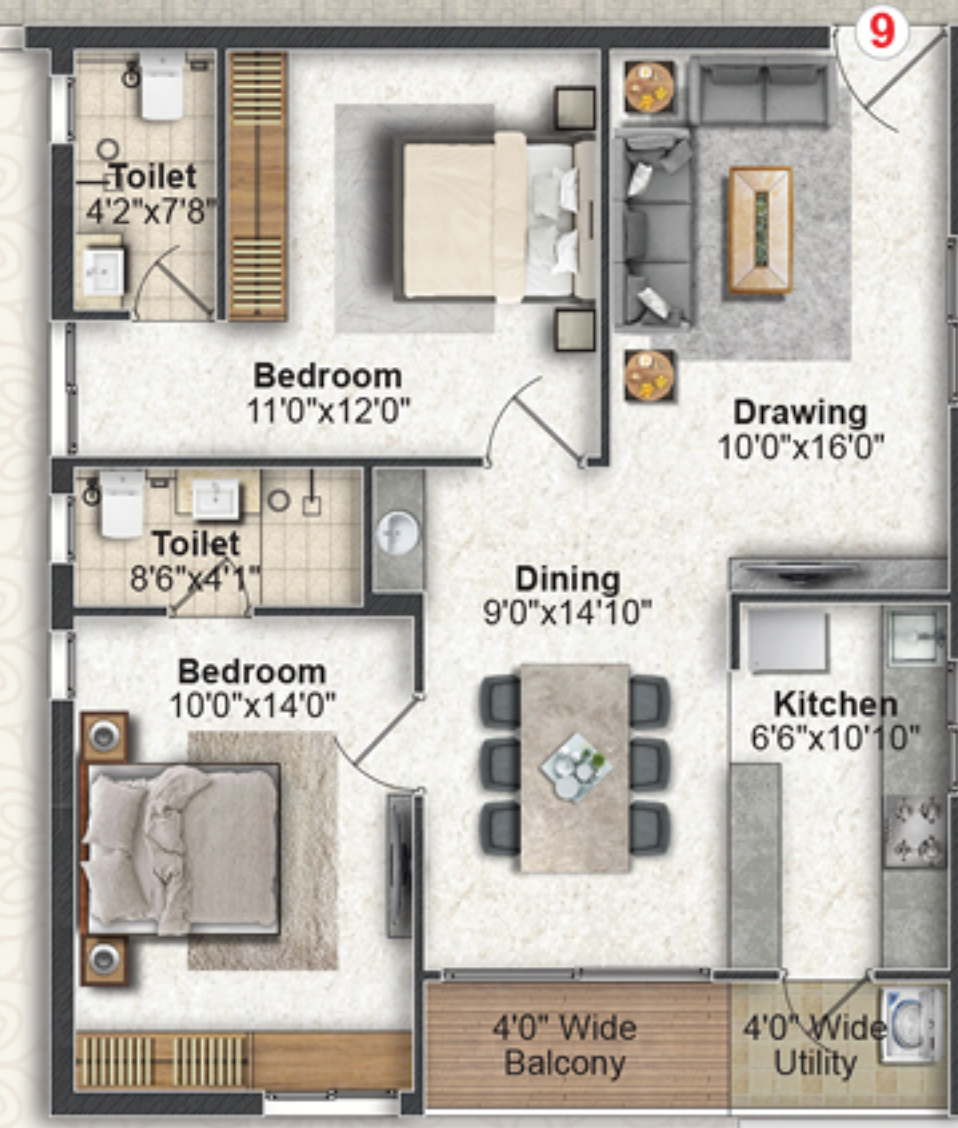
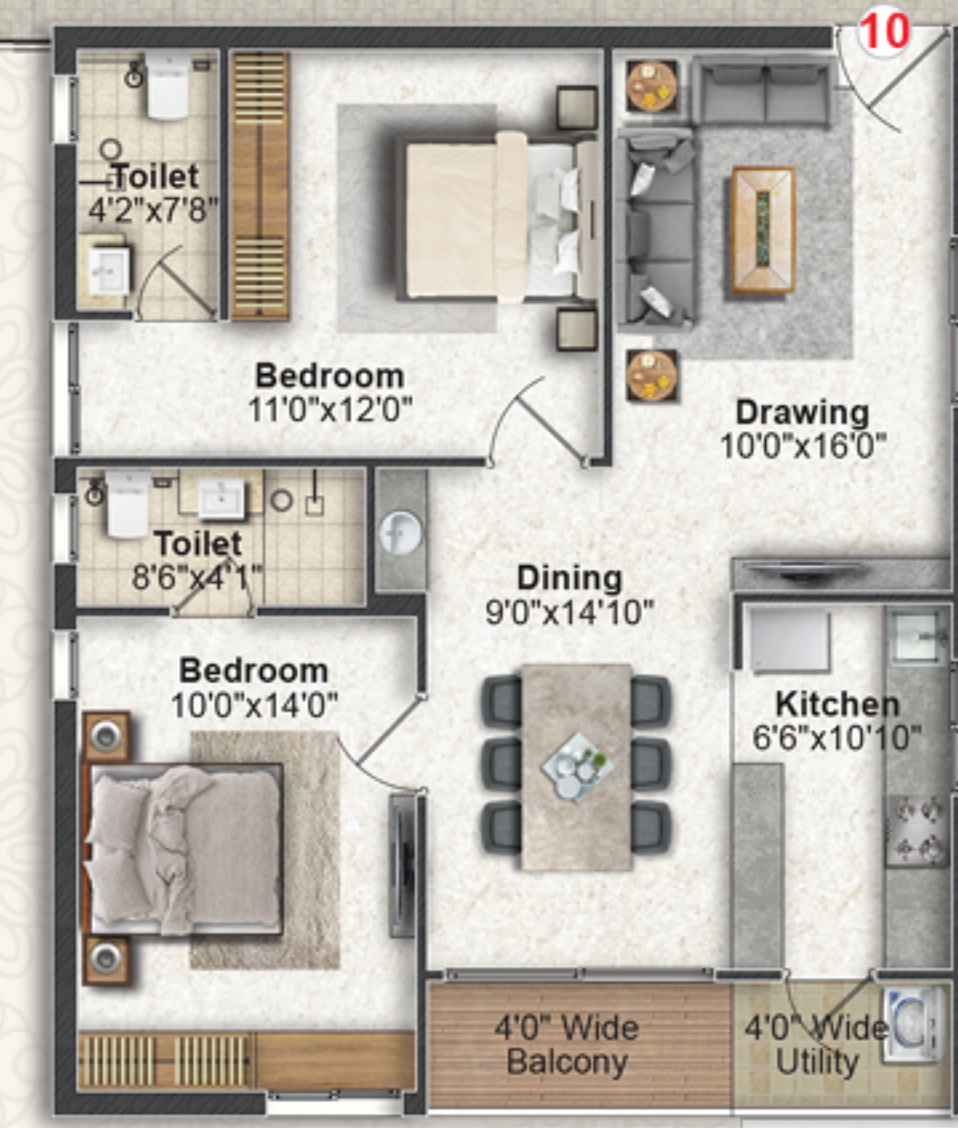
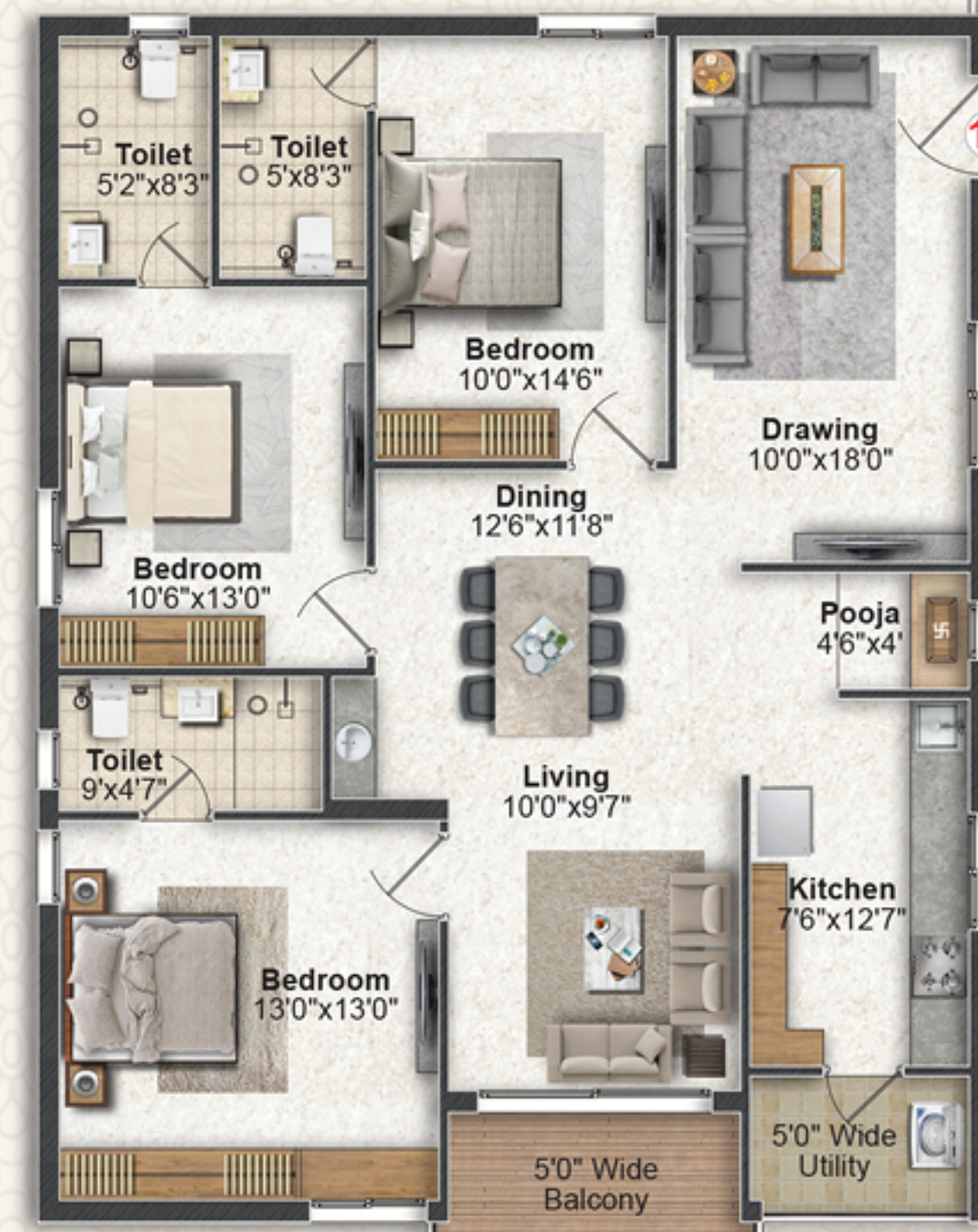
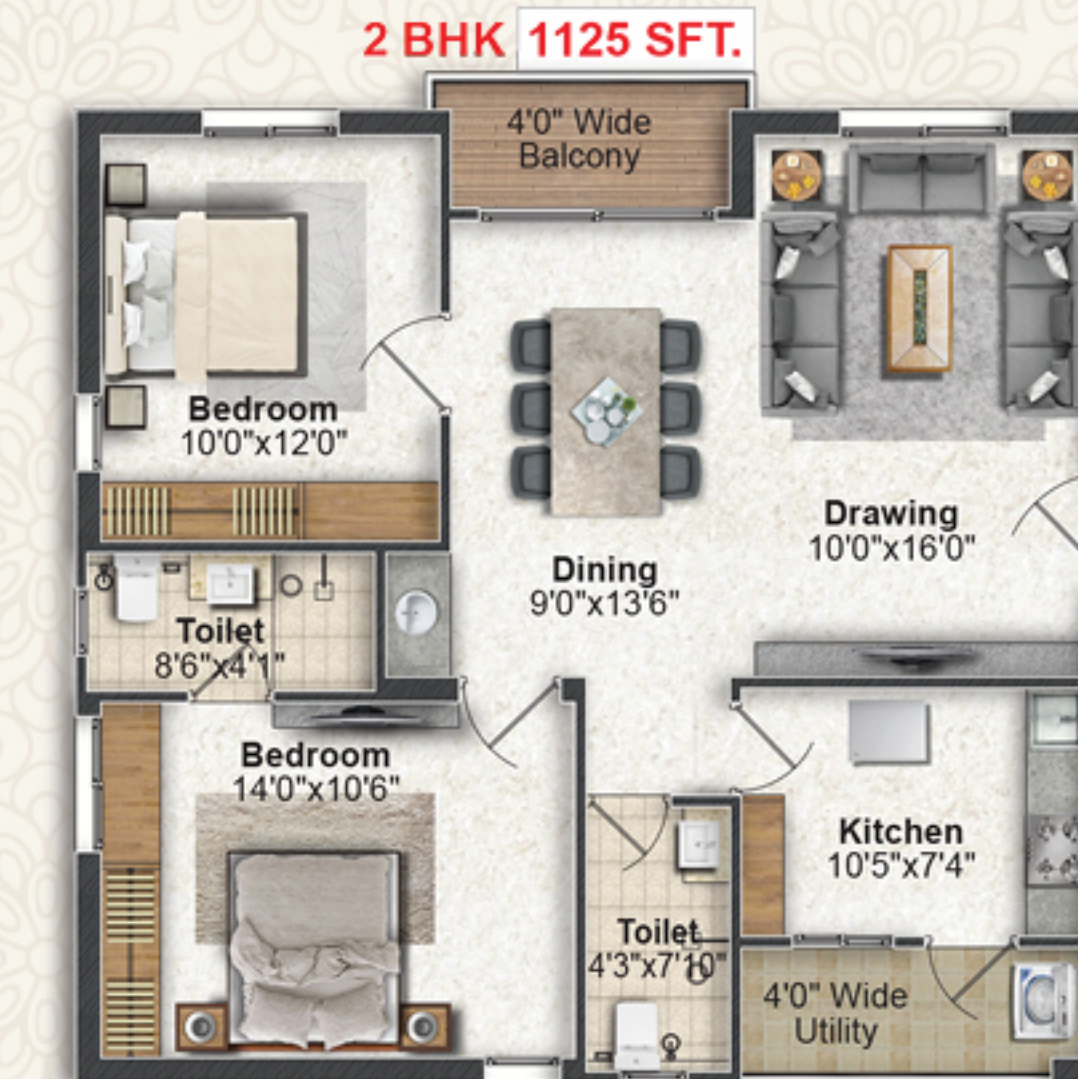
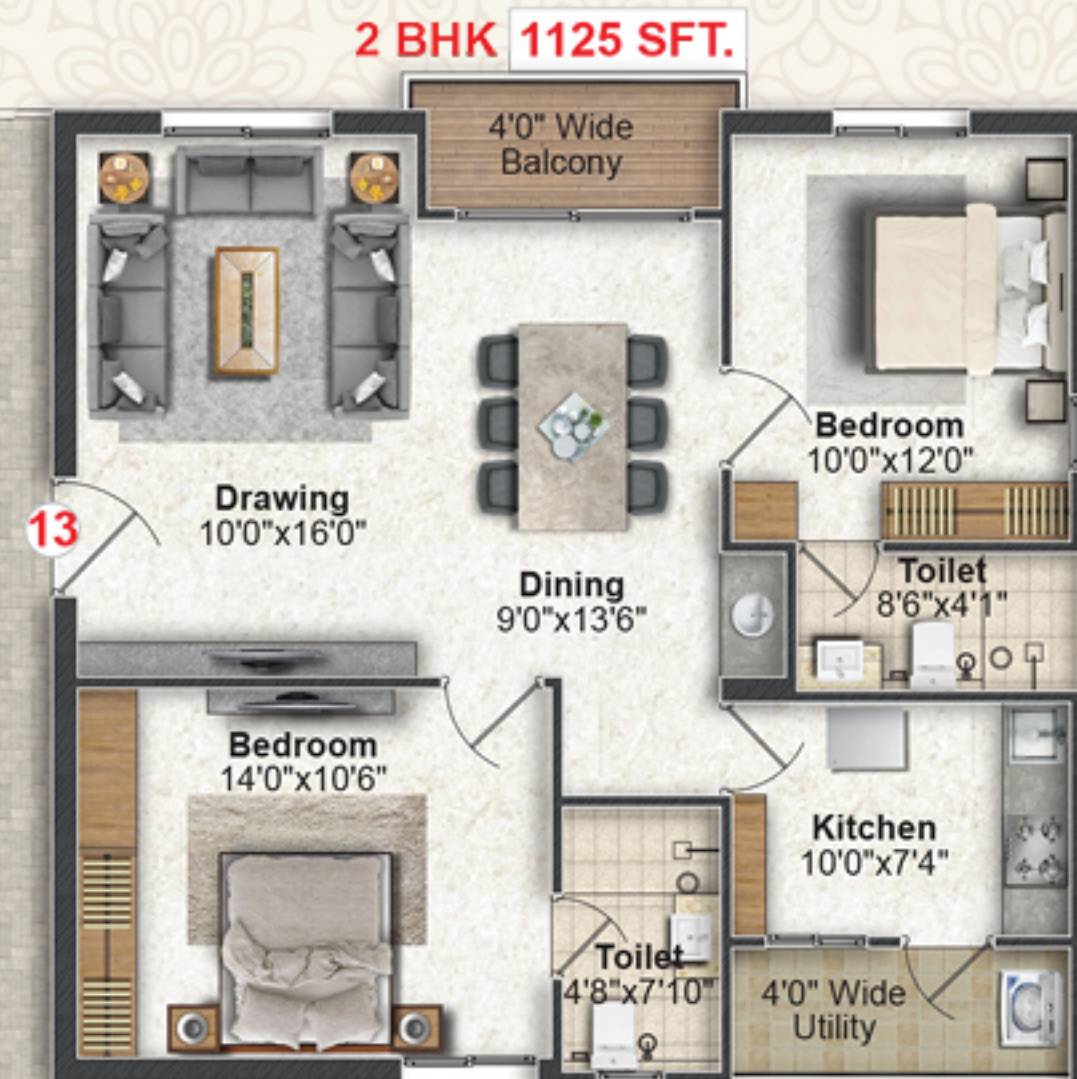
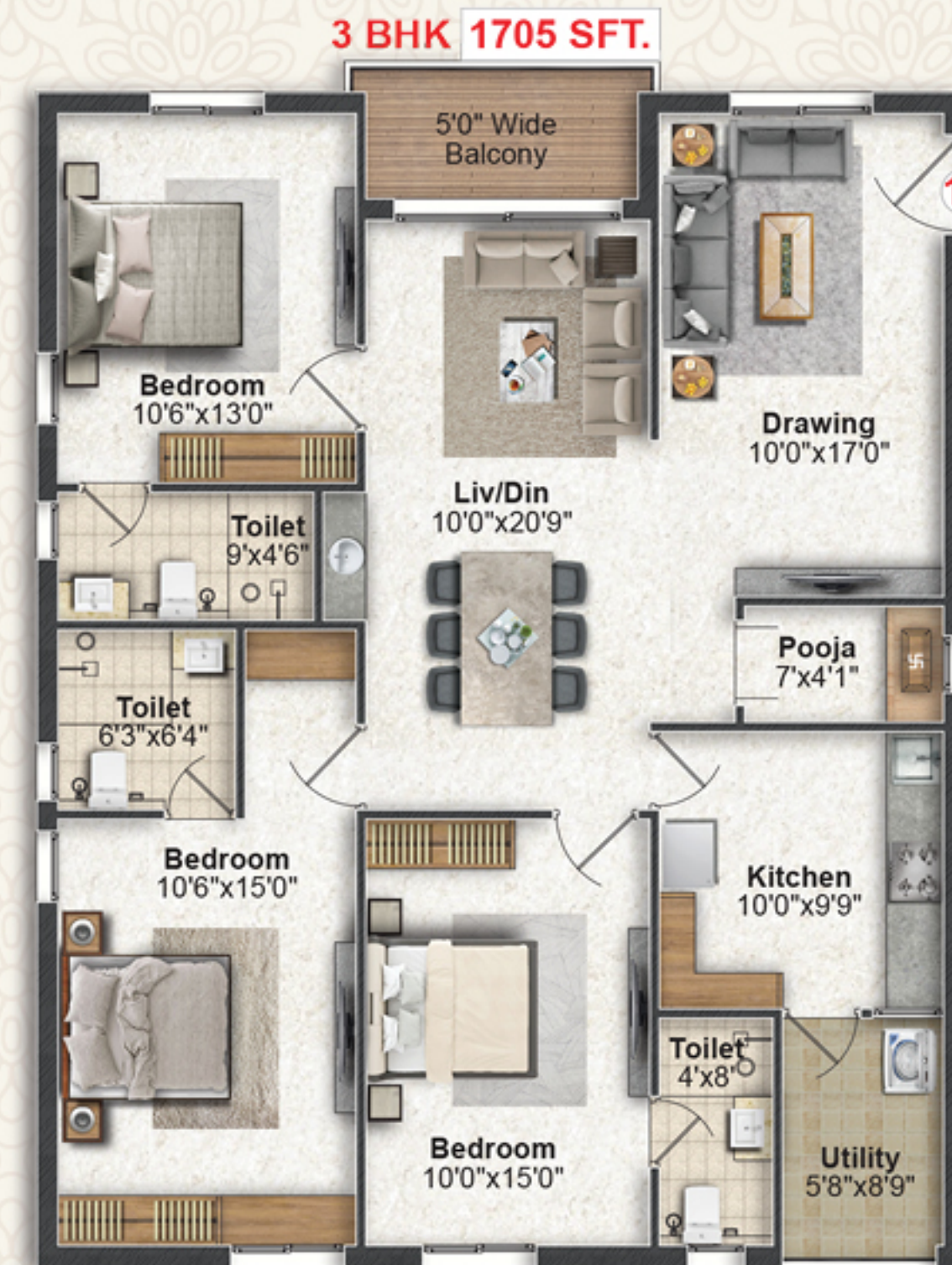
Area Statement

Flat No.	1	2	3	4	5	6	7	8	9	10	11	12	13
Type	3 BHK	2 BHK	3 BHK	2 BHK	2 BHK	2 BHK	3 BHK	3 BHK	2 BHK	2 BHK	3 BHK	3 BHK	2 BHK
Facing	West	East	West	North	North	North	West	East	North	North	East	East	West
Saleable Area (SFT)	1615	1125	1615	1100	1100	1100	1760	1760	1100	1100	1705	1705	1125



30'0" WIDE ROAD

30'0" WIDE ROAD



30'0" WIDE ROAD

30'0" WIDE ROAD

EAST-FACING - FLAT NO. 11
3 BHK (1705 SFT)



Entrance

3D VIEWS

WEST-FACING - FLAT NO. 7
3 BHK (1760 SFT)



Entrance

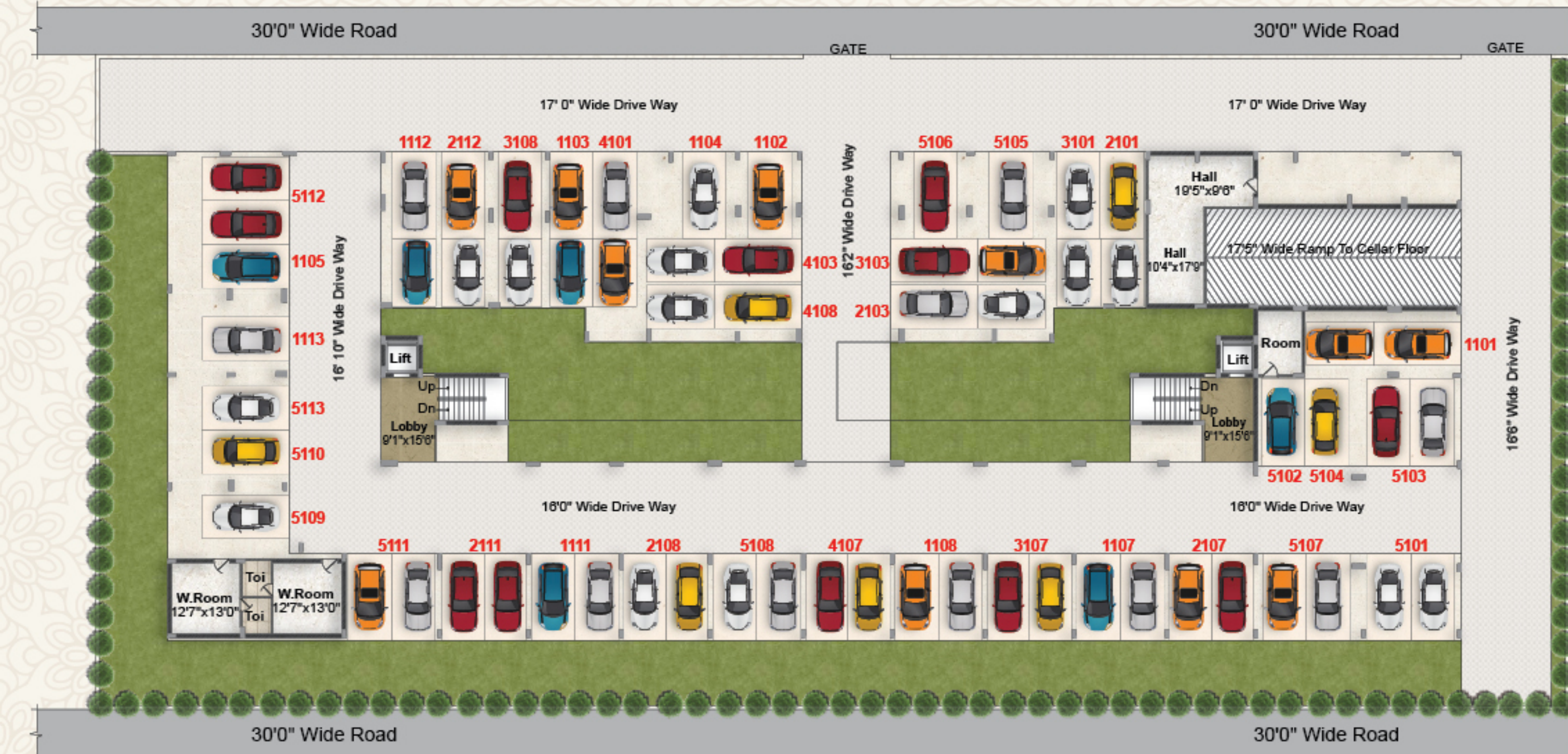


CORNERS TO
MAKE YOUR
IDEAS BLOSSOM.

Whatever the size of home you choose, **Greater Infra's Honesty** will give you enough and more spaces to live your life like you have envisaged always. Each home is being designed as a destination warm and pleasantness in itself, where you can blossom life.



STILT FLOOR PLAN



AMENITIES & FEATURES

NO COMMON WALLS



2-LEVEL CAR PARKING



LANDSCAPED AREA



QUALITY CONSTRUCTION



RAIN WATER HARVESTING PITS



POWER BACK-UP GENERATOR



CC TV CAMERA SECURITY



8' WIDE CORRIDOR



100% VAASTU



INTERCOM FACILITY



EXCELLENT VENTILATION



NORTH-FACING - FLAT NO. 4, 5, 6, 9, 10
2 BHK (1100 SFT)



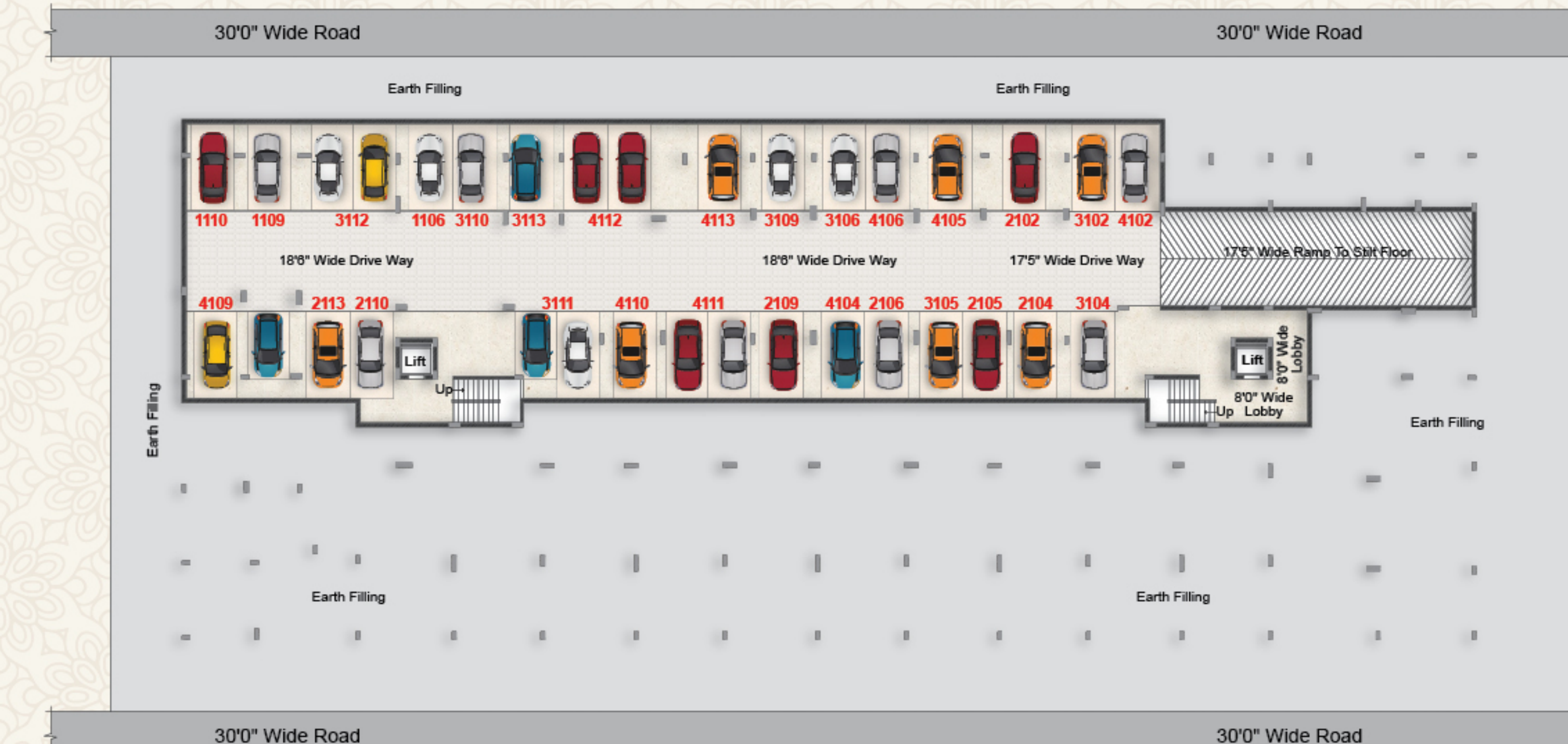
Entrance

WEST-FACING - FLAT NO. 13
2 BHK (1125 SFT)



Entrance

CELLAR FLOOR PLAN



GREATER INFRA'S
HONESTY
 Bloom in delight



THE STAR OF
 THE TWILIGHT
 SHINES BRIGHT.

Greater Infra's Honesty is an enchanting community that looks good anytime of the day, or night. It's wide panoramic designed will illuminate the surrounding beautifully, and even elevate the beauty of the very location itself.



STRUCTURE
 R.C.C. framed structure with table moulded bricks in cement mortar.

INTERCOM
 All flats are connected via Intercom facility. Security with CCTV.

UTILITIES/WASH
 Anti-skid tiles for wet area for washing utensils and glazed tiles up to 3' height.

WINDOWS
 UPVC windows with mosquito mesh and MS safety grills.

GENERATOR
 Generator Power Back Up for Light & Fan Points for entire Flat and Common Areas like Lifts, Staircase, Corridor & Parking Areas.

CABLE TV
 Provision for cable TV connection in hall and master bedroom.

DOORS
 Main Door: Teak wood frame aesthetically designed polished shutter with reputed make hardware.
 Internal Doors: Teak wood frame with both sides veneer / limited flush doors.



SPECIFICATIONS

FLOORING
 Bedrooms, drawing, living, dining and kitchen with vitrified tiles of size (800mm x 800mm) for the entire flat.

ELECTRICAL
 Concealed copper wiring of standard make with adequate light, fan, power plugs and points with standard make modular switches.

TOILETS
 Hot and Cold Concealed Diverter with shower, wall-mounted WC and concealed flush tank. Provision for geysers in all bathrooms. C.P. fittings are chrome-plated of ESS ESS or equivalent make. Designer concept tiles of reputed make up to door height.

PAINTING
 Internal: Smooth luppam finish with acrylic emulsion paint.
 External: Combination of textured / smooth finish.

KITCHEN
 Granite platform with stainless steel sink with both municipal and bore-well water connection. Glazed ceramic tiles dado up to 2' height above kitchen platform.

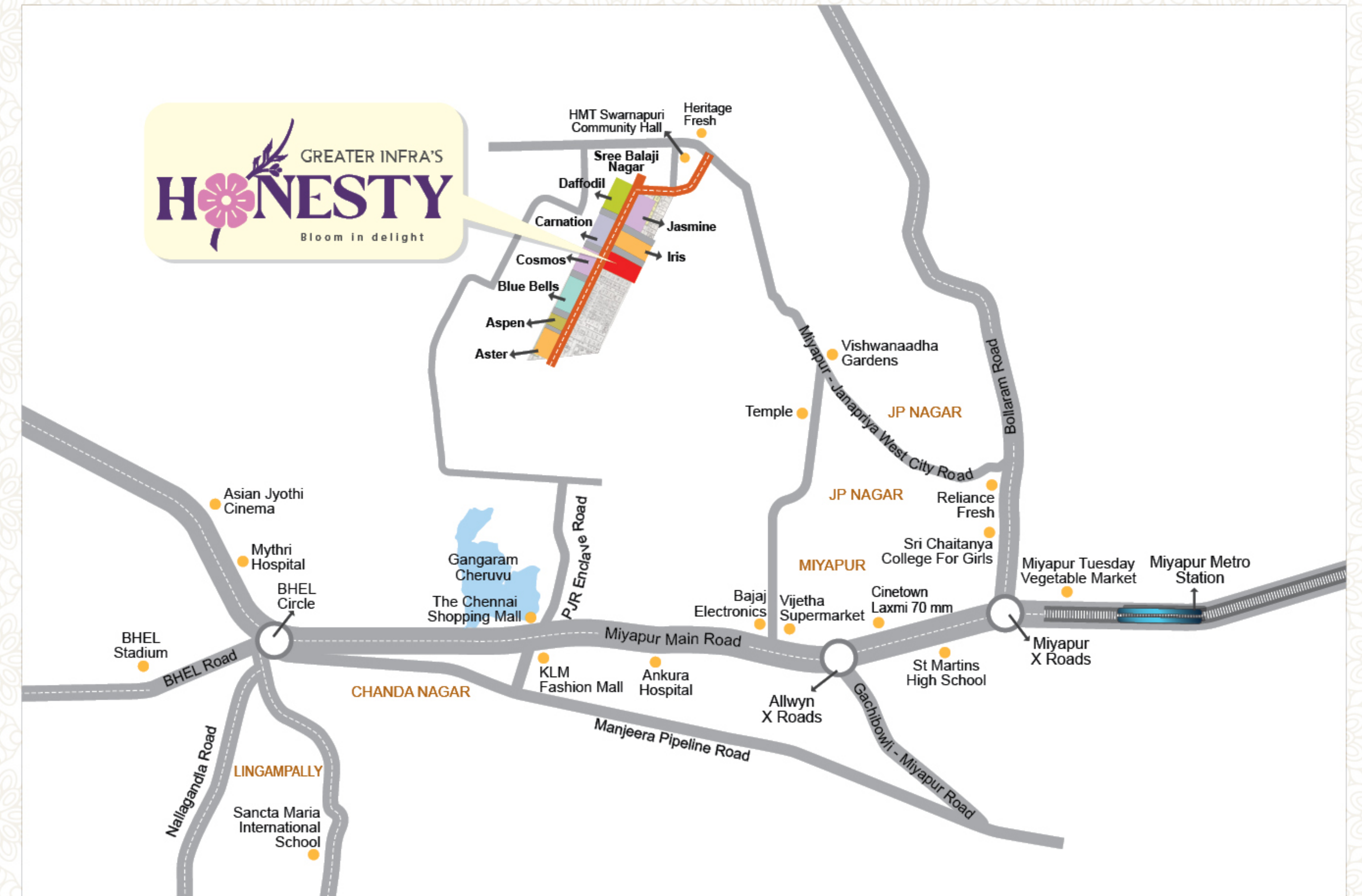
LIFT
 6-passenger auto door lift / Schindler / Kone make. With granite / tiles cladding in each floor.

WATER SUPPLY
 Adequate water supply from overhead tanks with provision for municipal and bore-well water.

PARKING
 Aesthetically-designed parking tiles.

NOTE
 1) Registration Charges, GST and any other taxes applicable as per government norms to be borne by the customers only.
 2) People desiring to alter / modify their flat, may do so with prior request and additional payment in advance.

LOCATION MAP
 (Not to scale)



RESIDE IN QUITE
 THE CENTRE OF
 PROGRESS.

If location matters most to you, Greater Infra's Honesty will surely be your choice. That's because it is surrounded by many significant addresses and prominent destinations. You will never be far from places like educational institutions, hospitals, leisure, entertainment and places of worship. Most importantly, it is here that progress is happening.



THE MAKERS OF
FINE LIVING AND
GOOD HOMES.

Greater Infra's Honesty is a presentation of Prime Living. So here's a home that is coming to you from people who know to create fine living destinations.



GREATER INFRA PROJECTS (P) LTD.

Plot No. 217/A, 2nd Floor,
Near Metro Station, Matrusri Nagar,
Miyapur, Hyderabad - 500049, Telangana.

Cell: 94594 57111

e-mail : greaterinfra@gmail.com

website : greaterinfra.com

TS RERA Registration. No. P01100004997



SCAN TO WEBSITE

Marketing Partner



WEDGE
REALTY

Architects

S DESIGNS

Kukatpally, Hyderabad.

Cell: +91 98480 54934

Note: This brochure is only a conceptual presentation of the project and not a legal offering.
The promoters reserve the right to make changes in plans, specifications and elevation as deemed fit.

Artifice +91 98852 53570