



# 360 LIFE

ENLIGHTENED LIVING





360LIFE

---

THE ORIGIN

TOWER - II



## REVOLUTIONISING THE RELATIONSHIP BETWEEN HUMAN & NATURE

The fascinating richness of greenery  
With dense vegetation and 500+ trees.

The inspiring idea of sanctified living.

The epitome of a sustainable lifestyle.

The supreme means of ensuring wellness.

The ineffable feeling of being reassured across critical  
needs.

The inimitable expressions of farsightedness.  
The personification of trailblazing spirit.

The matchless blend of city and country.

The lasting sense of privilege.

Presenting the **360LIFE THE ORIGIN** Tower II at Hitec city,  
Hyderabad. Uber-premium vertical garden apartments far  
superior in multiple ways to even independent villas.

It is genuine respect for life eloquently reflected. A  
unique residential address that is timeless in value from a  
slew of perspectives, and eternally enviable.

Make a choice of a home that is nothing less than a  
revolution.



## VERTICAL GARDEN FOR TREE & BIRDS TRULY HEALTHY LIVING.

500+ diverse and native trees including mango, sapota, neem, ashoka. These great friends to live with, are a significant part of your exalted address. Forming a mini forest, making a riveting scenery, creating an orchestra of tweets and surrounding the magnificent 35 - storeyed 360LIFE THE ORIGIN Tower II Vertical garden gives exquisite comfort of airiness and the priceless fruit of robust health.



**A BIODIVERSE SETTING  
IN A CITY IS NOT A FANTASY.  
IT IS YOUR RESIDENTIAL ADDRESS.**

When you choose 360LIFE THE ORIGIN Tower II you don't just get a home. You revel in a veritable world that will be effusively talked about. A world that is biodiverse, fascinatingly colourful and an exemplary stress buster. There is a lot that is relaxing and riveting to behold. There are many ineffable feelings to be had. The high wall between fantasy and reality lies collapsed.

A Tower where parrots, peacocks, rabbits with micro ponds, etc., become an indispensable part of a community.



FIRST IN INDIA AND SECOND IN ASIA:  
A HOME WITH A VERTICAL GARDEN TO GROW  
A GREATLY SENSIBLE LIFE.

At 360LIFE THE ORIGIN Tower II you reap a unique feel of life with a home of well-regulated vegetation that is along the façade. Between the outer wall and the living wall is a waterproof barrier that acts as a deterrent to seepage absolutely impossible. The various plants aren't just an immensely pleasing aesthetic feature but also contribute enormously to healthy living by being a fresh air source and a barrier against dust.

“ Nothing like it.. Experience bliss”





## DISCOVER SERENITY AND MOMENTS OF SERENDIPITY

Super Stylish | Super Spacious | Super Sky Villas

Uber aesthetics. Breezy setting. Exceptional air quality.

Enchanting views all around. Serenity at its peak. The property has 254 flats with unhindered green views & air infused with fresh oxygen.





## 35 FLOORS

3 floors club house

3 floors parking

## 254 FLATS

8 premium flats on each floor

### 3 BHK

2700 - 3100 sq.ft

### 4 BHK

3100 - 3600 sq.ft

**360LIFE THE ORIGIN Tower II**

@HITEC CITY, HYDERABAD.

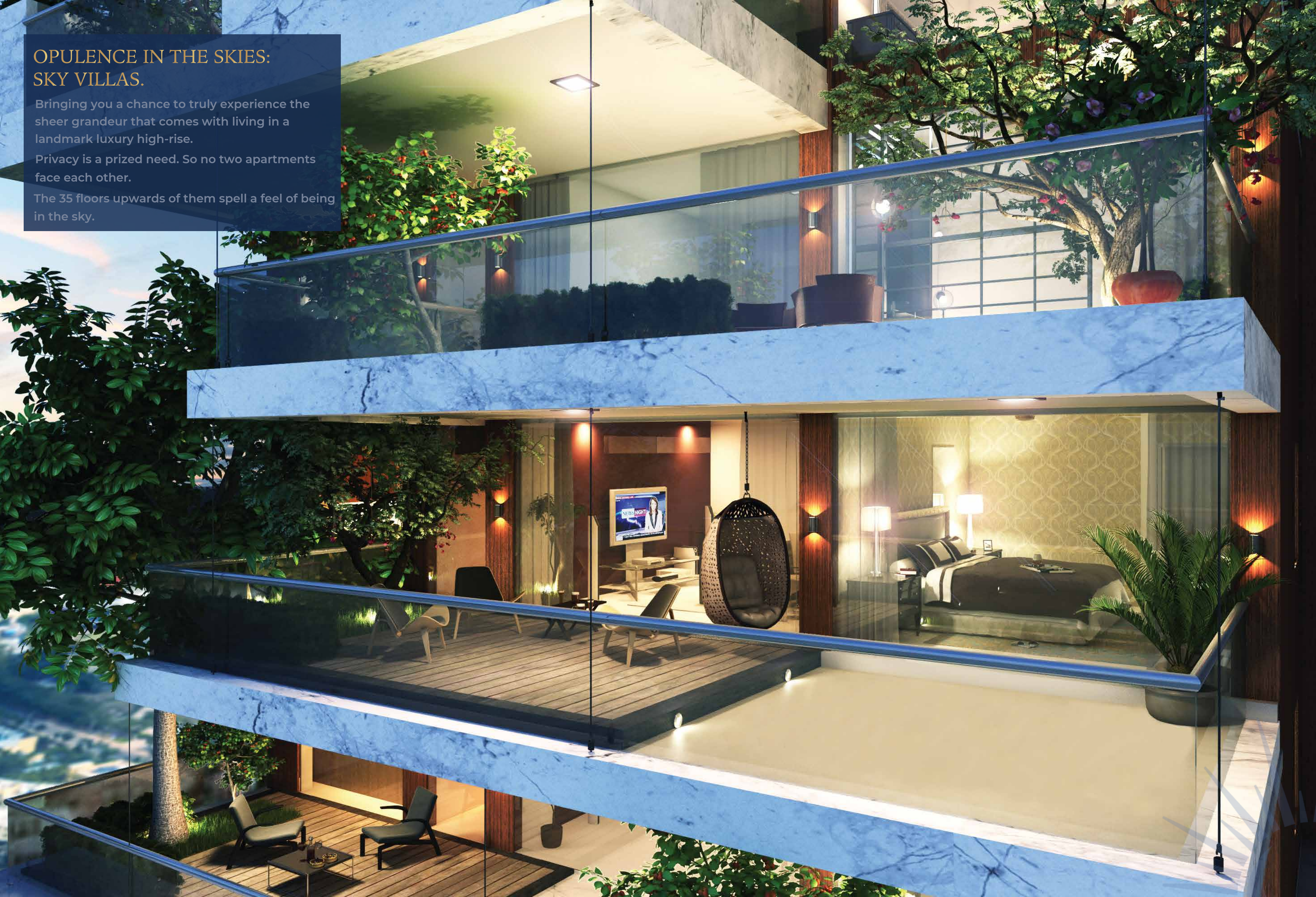


## OPULENCE IN THE SKIES: SKY VILLAS.

Bringing you a chance to truly experience the sheer grandeur that comes with living in a landmark luxury high-rise.

Privacy is a prized need. So no two apartments face each other.

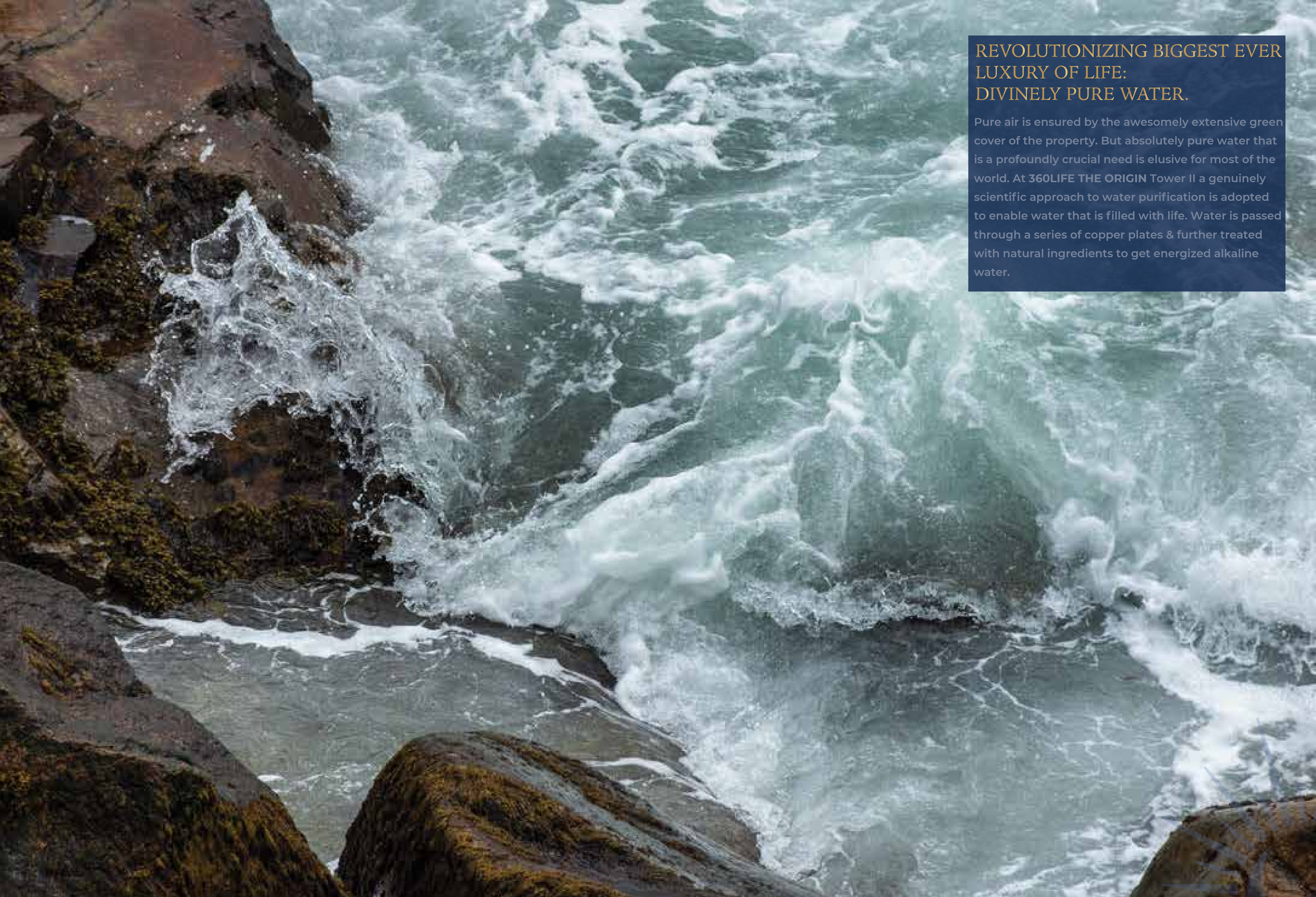
The 35 floors upwards of them spell a feel of being in the sky.



## A HARMONIOUS CONNECTION WITH THE DYNAMISM OF THE EXTERNAL SURROUNDING

The balconies are conceptualized to enhance the inside-out experience, from the well thought out landscape to the premium living spaces. Each is vested with a very sensible green touch. The hall balcony may have fruit-bearing variants and / or with aromatic plants. And the kitchen balcony, yes, you guessed it, may have vegetable plants, predominantly the leafies. All the green life of the balconies are fed by an intelligent irrigation system.





REVOLUTIONIZING BIGGEST EVER  
LUXURY OF LIFE:  
DIVINELY PURE WATER.

Pure air is ensured by the awesomely extensive green cover of the property. But absolutely pure water that is a profoundly crucial need is elusive for most of the world. At 360LIFE THE ORIGIN Tower II a genuinely scientific approach to water purification is adopted to enable water that is filled with life. Water is passed through a series of copper plates & further treated with natural ingredients to get energized alkaline water.

## YOUR GREAT CHEMISTRY WITH LIFE IS ENSURED BY THE ROBUST BUILDING BIOLOGY.

Yes, if you haven't known it already there is this concept of building biology the knowledge of which is widely and rapidly spreading but very sadly the practical use of it remains scarce. Needless to say, your life-honoring 360LIFE THE ORIGIN Tower II home reflects a sharp focus on it.

According to the International Institute of Building Biology and Ecology (IBE), the core aspects of building biology are building materials and processes, electromagnetic fields (EMFs), electromagnetic radiation (EMR) and indoor air quality (IAQ). An extensive list of principles evolved by IBE to realise buildings that are healthy and exemplify environmental sustainability has been fully adhered to, by the scientific form and proportion driven 360LIFE THE ORIGIN Tower II, to spell a multitude of wholesome benefits including effective resistance to pollutants, allergens, dust, and harmful micro-organisms; negation of electromagnetic and radio frequency radiation; abundant natural lighting and purified air; balance of thermal insulation and heat retention; optimised room acoustics, etc.

Respecting your life in detail. That is the building biology of 360LIFE THE ORIGIN Tower II.





## HEAT BANGS ITS HEAD IN FRUSTRATION ON THE WALLS OF YOUR HOME.

The creator of your home is also the creator of the bricks used for it. The bricks are not bought from what is commonly available and not made the standard way as is the norm. They are uniquely and scientifically created to ensure heat tastes abject defeat in its bid to enter your home. The heat-resistant walls are another green aspect of your home that is an outstanding example of sustainable development with an energy saving prowess that is quite incomparable.

Be extremely cool from knowing that your home is about the best of everything, and represents a profound sense of environmental responsibility as you do.

A wide-angle photograph of a modern, high-ceilinged lobby. The central feature is a tall, ornate, dark-colored pillar with intricate carvings. To the left, a large glass wall allows natural light to flood the space. The ceiling is white with recessed lighting and a large, ornate chandelier hangs from the top. The floor is polished and reflective. In the foreground, there are several seating areas with contemporary furniture, including tufted armchairs and sofas with patterned and solid-colored cushions. A large, vertical green wall with various plants is visible on the right side. The overall atmosphere is bright, clean, and sophisticated.

## USING ANCIENT TEMPLE STONES PROVIDES A SENSE OF TRANQUILITY TO YOUR HOME

Ancient temples of India are constituted of stones scientifically considered to be powered to influence certain significant dimensions of life. The great deal of science characterising these ancient buildings spanned the planning, design, and choice of construction materials, especially stones. Your strongly well-being centric Lobby employs the said stones in traditionally prescribed ways in some of its common areas such as the lobby, corridor, atrium, etc. The feeling from it is distinct. And the feeling that your home is so worshipful of you certainly happens. A life of serenity lived with an air of confidence. That is about it.

## HOW COOL IS THAT AIR-CONDITIONING.

Your home is highly energy conserving with lesser need to use fans or air-conditioners. The caressing by the breeze, afforded by the multitude of trees is something you can't have enough of. But, nevertheless, you are served with world class air-conditioning, so your home is high on green credentials with a great deal of energy efficiency and much less pollutants released into the atmosphere.



YOUR LIFE HERE IS A  
BEAUTIFULLY SCRIPTED  
STORY. A HOME CINEMA IS  
THEREFORE ONLY TO BE  
EXPECTED.

The plush home cinema is a thrilling experience  
with a giant screen that absorbs you totally. Setting  
out with family to catch a flick will seem too dated.





## A BEAUTIFULLY CRAFTED SANCTUARY

The overwhelming view of winsome natural features apart, the sunnier living at 360LIFE THE ORIGIN Tower II is also driven by cutting-edge Artificial Intelligence that makes your home human-like.

### SENSOR WINDOW CURTAINS

The day begins on a cheerful note with your smart home suffused with sunlight by all window curtains parting automatically on touch by sunlight.





## AIRPORT-LEVEL SECURITY. BECAUSE PEACE OF MIND IS OF SKY-HIGH VALUE.

Multi-layered. Farsighted. Hassle-free. Cutting-edge. The most reassuring ever in the matter of home security. To sum up it is of the kind airports employ. Because being at peace is being in complete charge of your life.

Baggage check. Vehicle check. Facial recognition. Biometric access. Metal frame detector. And the ultimate class of everything else that is standard.

For instance, each corridor is to be biometrically accessed. Access cards for non-guest visitors like delivery boys will ensure that their presence in the building is only for a stipulated time and not a minute longer. Such visitors are constantly tracked all through their period of presence. Any possible delay of their exit is promptly addressed. Your maid is monitored across her work hours.



### CONSTANT AND REMOTE CHILD MONITORING

You can observe your child's activities indoors or outdoors constantly and remotely on your mobile phone wherever you are. Your child can be tracked all the way to and from school.



### DETAILED SURVEILLANCE

Every part, every corner, every nook of the building is under hi-tech surveillance. No outsider like the delivery boy is allowed to linger around for longer than usual.



### BIOMETRIC ACCESS FOR DOMESTIC STAFF

You can feel extremely secure with a robust anti-intrusion system that involves biometrics. So only people employed by you or the building will have access to specified parts of it. Your maid's activity can be tracked too.



### PROVISIONS AND LAUNDRY ALERT

Your busy life may not alert you to the fact of your provisions running out. But your home will never fail to. So food and drink stocks can be replenished with no delay. Same with laundry too as you will be informed when it is time to do it.



WITH THE TREES YOU  
WILL FIND A LOT OF BIRDS  
FLYING AROUND. WITH THE  
RECREATIONAL AMENITIES  
TIME TOO WILL FLY

You have it all at 360LIFE @Hitec city. There is something to look forward to. There is something to be enjoyed at different times of the day. There is a sense of contentment awaiting you.



# AMENITIES



## HAVE YOU EVER CLIMBED UP A FOREST?

At 360LIFE THE ORIGIN Tower II , the terrace garden comprises everything that can be done on a roof and beyond. Be it yoga area, children's play area, party garden and much more. While solar panels do their noble work generating electricity, the fruiting and veggie creepers under them allow you to experience the true nature.



1) OUTDOOR GYM

3) YOGA LAWN

5) GATHERING SPACE

7) REFLEXOLOGY PATH

2) PARTY LAWN

4) TERRACE BARBEQUE

6) RECREATION GROUND

8) CHILDREN'S PARK



ZUMBA HALL



BANQUET HALL



STEAM & SAUNA ROOM



MULTI FUNCTIONAL ROOM



BADMINTON COURT



# STATE OF THE ART MODERN AMENITIES



SNOOKER



JOGGING TRACK



SQUASH COURT



INDOOR GAMES ROOM



GYM



LIBRARY



CRECHE



## THE GREAT IDEA OF SUSTAINABILITY HAS A GREATER EMPHASIS HERE.

Everything the future demands as extremely essential is well in place at 360LIFE THE ORIGIN Tower II. To be assured of an adequate supply of water and energy in store infuses your life with a feeling that is rare to have in this time and age, and helps makes the flow of life as smooth as possible.

### SEWAGE TREATMENT PLANTS


Sewage treatment plants are of a capacity much higher than usual for residential needs, and operate on dual mode with membrane-based and resin-based bio reactors as input for alkaline energised water.

### RAIN WATER HARVESTING

A unique technology of rain water harvesting is employed that makes the conventional system seem superficial and enables harvesting of 95% of Available rainwater. The harvesting pits are several hundreds of feet in depth, and the recharge pits are numerous and well distributed. Seeming like mini ponds they add greatly to the scenery.

### SOLAR ENERGY

While your home facilitates enormous power savings by way of its technological and natural features, the solar panels subtly placed atop the terrace reduce the property's energy foot print by generating between 100-250 KW of electricity.





## ALRIGHT, YOU NOW HAVE A HOME THAT FEEDS YOUR PRIDE. BUT WHAT ABOUT THE FOOD TO FEED YOU?

All the big money you earn means a big nothing if it fails to ensure that you live the way you are meant to as a human. Commonly, the food that is available today is grown the easy and fast chemical way that poses grave risks to your health in the long run, You work hard. Your achievements are to be cherished very deep into the future. Your family is to live reassured of good health all the way. Pesticides in greens, harmful chemicals in fruits, lead in fish, antibiotics in chicken and red meat, colorants, carcinogenic and acidic preservatives in everything packed, dont you deserve an offering that is guaranteed healthy for you & your family?

**360 LIFE ENLIGHTENED ORGANICS** cares for you to the hilt by providing you cereals, pulses, spices, vegetables, milk, dairy products and more produced exclusively for its residents in the genuinely natural farming way at select farms.

Remember ever that there is food, and then there is food that respects you. Something to chew on, right?





## THE CENTRAL KITCHEN MAKES A WONDERFUL TASTE OF CONVENIENCE FOR THE BUSY YOU LEAD.

The residents of 360LIFE THE ORIGIN Tower II can avail of an ardently sought ingredient for modern city living: freedom from cooking at the end of a rushed and tiring day at work or for whatever other reasons. Eating bought junk or reheated food is not something you must condemn yourself to either. So like manna from heaven is the comprehensively equipped and ultra-modern central kitchen that uses only naturally grown vegetables and meat to dish out an excitingly wide range of multicuisine food with world class hygiene standards. Food at anytime of your choice is prepared on order and served at your home. At times, your recipe advisory of cooking is allowed for the food to conform to your sharply specific needs. The central kitchen facility also allows multi-resident participatory events in cooking towards fostering community bonding.





**NEAREST SCHOOLS**

- World One School – 3 km
- Oakridge School – 7.1 km
- ISH – 13.1 Km
- Gaudium School – 26.4 km
- Delhi Public School – 7.6 km

**NEAREST HOTELS**

- Novotel: 950 m
- Trident – 4km
- ITC Kohenur - 6.1 km

**NEAREST IT PARKS**

- Tata Tesco Star Hyper market - 4.7km
- raheja mindspace - 4 km
- Amazon development centre 4 km

**NEAREST PARKS:**

- Durgam Cheruvu -7 km
- Botanical Garden - 2.2 km
- Flipside Adventure Park - 9.6 km
- Gandipet Lake- 15.3 km
- KBR park-11.5 km

**NEAREST MALLS / STORES**

- Next Galleria Mall - 3 km
- Sarath City Capital Mall - 2.3 km
- Pvr Icon - 2.5 km
- Q Mart - 2.8 km
- Inorbit mall - 5 Km

**NEAREST HOSPITALS:**

- Apollo Medical Center - 1.5km
- AIG Hospital - 3.6 km

**NEAREST RAILWAY STATIONS:**

- Hitech City Metro - 3 km

**AIRPORT:**

- RGIA - 32.3 km

**NEAREST RECREATIONAL CENTRE:**

- Isha yoga center - 5.2 km

360LIFE is located towards west of Hyderabad city, between Mumbai Highway (NH-65) and Gachibowli , an established IT/ITES and residential hub of Hyderabad.



2km to shilparamam (4 min)



8km to avasa hotel (7 min)



2km Sarath city Mall (7 min)



4.4 km to raheja mindspace (10 min)



1.6 km to hitex exhibition centre (3 min)



2.5 km to KIMS hospital (7 min)





# MASTER PLAN



## LEGEND

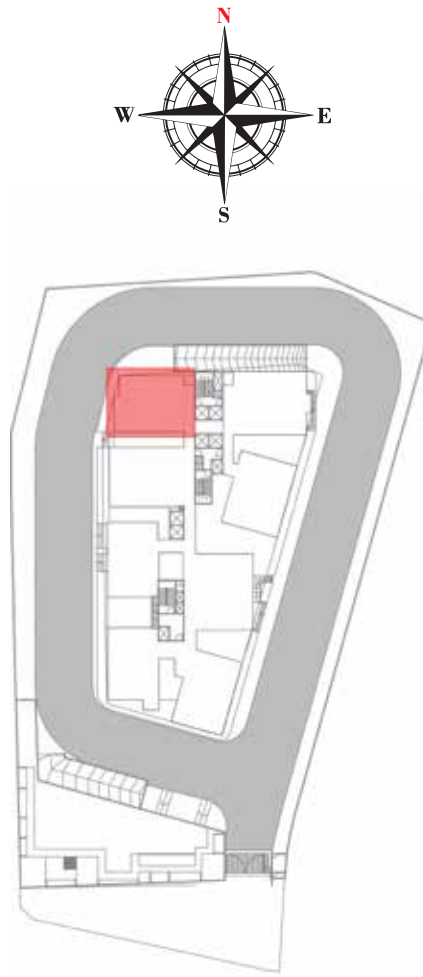
1. ENTRY PORTAL
2. 11 M WIDE DRIVEWAY
3. DROP OFF PLAZA
4. WATER CASCADE
5. TIERED PLANTING BED
6. THEME GARDEN
7. DRY GARDEN
8. PATHWAY/ JOGGING TRACK
9. ELDERLY ZONE
10. REFLEXOLOGY COURT
11. SEATING PAVILION
12. HERB GARDEN
13. FOCAL SCULPTURE PLAZA
14. COLOR GARDEN
15. CONGREGATIONAL LAWN
16. AROMATIC GARDEN
17. KIDS PLAY LAWN
18. BUTTERFLY GARDEN
19. ENTRY/ EXIT RAMP
20. ASSEMBLY POINT

# TYPICAL FLOOR PLAN

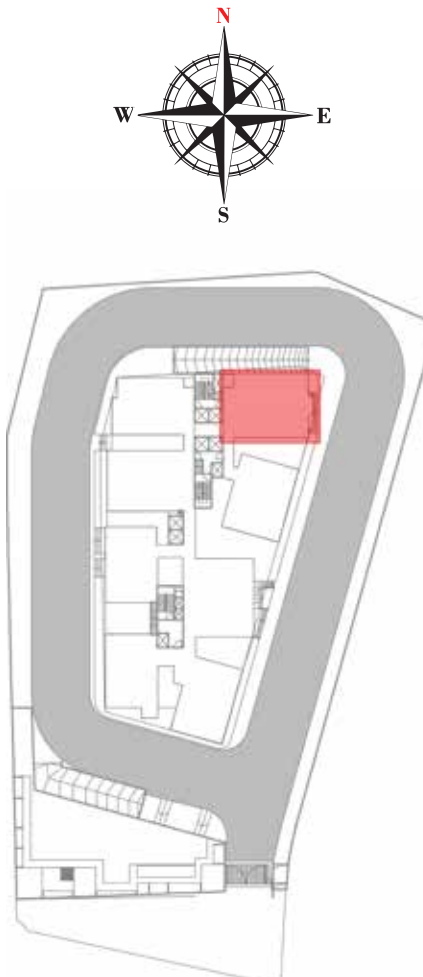




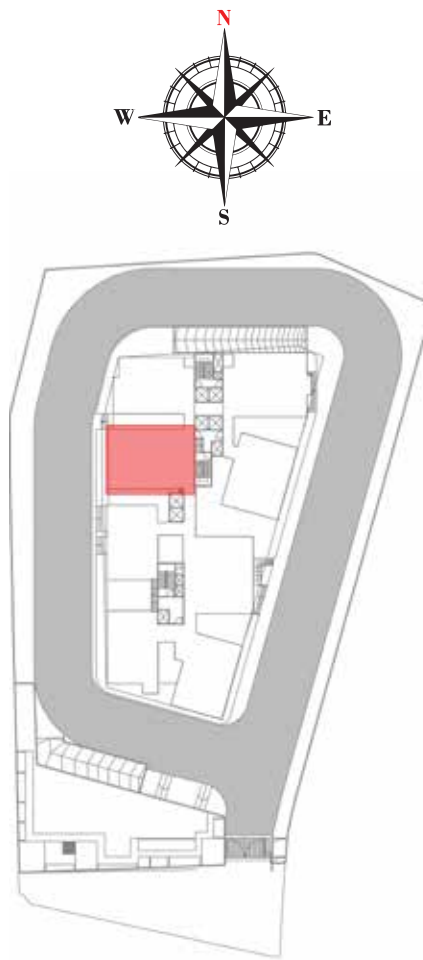
FLAT 01 East Facing 3BHK  
BUA : 2894 SFT



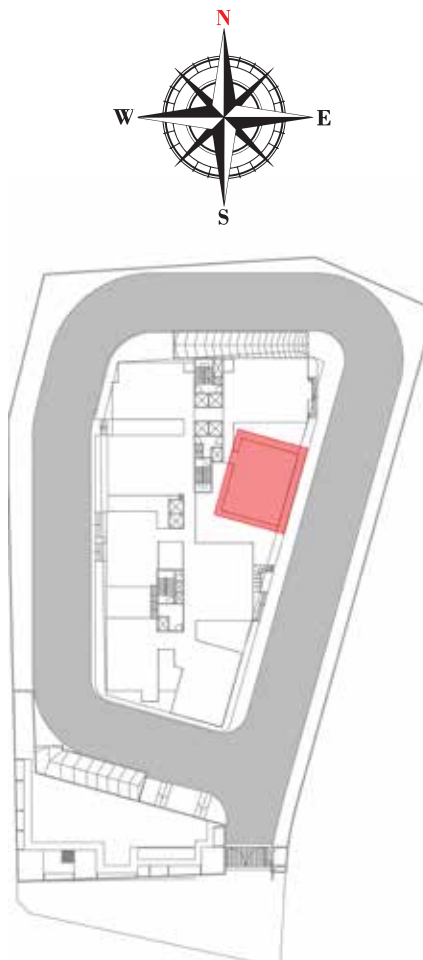
FLAT 02 West Facing 4BHK  
BUA : 3555 SFT



FLAT 03 East Facing 3BHK  
BUA : 2970 SFT



FLAT 04 West Facing 4BHK  
BUA : 2964 SFT





FLAT 05 East Facing 3BHK  
BUA : 2684 SFT



FLAT 06 West Facing 4BHK  
BUA : 3083 SFT



FLAT 07 East Facing 3BHK  
BUA : 2970 SFT



FLAT 08 West Facing 3BHK  
BUA : 3168 SFT

# 360LIFE FEATURES & SPECIFICATIONS



## Residence Type



## Total number of Units

254 NUMBER OF FLATS



## Club house

(65,000 SFT SPREAD OVER 3 FLOORS WITH LUSH GREENERY)

- Grand open lobby with waiting lounge
- The Daily Grind coffee bar
- Central Kitchen
- Gymnasium
- Food court
- Pool with shower rooms
- Food for soul restaurant.
- Life spa and saloon with jacuzzi
- Steam and sauna
- Mini super market
- Atidhi suites
- Yoga & Meditation hall
- Library
- Sports & Indoor games arena
- Clinic
- Theatre cum banquet halls
- Business center
- Creche



## Parking

SPREAD OVER 3 BASEMENTS

- Motorcycle and Bicycle parking Lots.
- Dedicated Electric car charging spots.
- Restrooms for drivers and service personnel.
- 1 or 2 car parking spaces for each home.



## Roof top

- Solar Panels for energy efficiency



## The life of this project

- Herb & spice garden
- Garden with fruits/ greens
- Balcony vegetation
- Appropriately matured tree in elevation



## Plastering

- Internal – Two coats of plastering in CM 1:6 ratio for walls.
- External – Two coats of plastering in CM 1 : 6 ratio.



## Windows

- Energy efficient UPVC door frames, with tinted float glass paneled shutters and hardware of best brands.



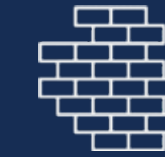
## Painting

- EXTERNAL – Textured finish and/or two coats of exterior emulsion paint of best brands.
- INTERNAL – Smooth putty finish with two coats of premium acrylic emulsion, Low Volatile Organic Compound (VOC) paints are used for internal coatings and sealants to ensure a healthy indoor environment.



## False Ceiling

- Gypsum/ POP boards



## Super structure

- Fly ash/Hydraulic pressed cement block/ Thermal insulated masonry in brick / Cement mortar for external walls.
- Fly ash/First class table moulded lightweight brick masonry in cement mortar for internal walls.



## Doors

- MAIN DOOR – and shutters with reputed hardware fittings with PU/low VOC polish.
- INTERNAL DOORS – granite door frame with manufactured Teak veneered shutter with reputed hardware fittings with melamine polish.
- FRENCH DOORS – UPVC/Aluminium door frames, double glazed double pane with tinted float glass paneled shutters and designer hardware of best brands.



## Flooring

- Designer Tiles



## Utilities & wash.

- Provision for dishwasher and washing machine in utility area.





### Tile cladding & dadoing

- Toilets – Imported/engineered marble or tile cladding up to false ceiling.
- Utility/Wash – Glazed ceramic tiles dado up to 3'0" height.



### Toilets

- Master Bedroom: Natural marble / imarble flooring and cladding up to false ceiling.
- Other bedroom toilets : Combination of natural marble and vitrified tile.
- Wall hung EWC in all toilets of Porcelanosa group or equivalent make.
- Wash basin with counter top: Wash basin of Porcelanosa group or equivalent make.
- Shower cubicle: Glass partition provided in all toilets.
- Hot and cold water mixer: Mixer of Porcelanosa group or equivalent make.
- Health Faucet: Faucet in all toilets of Porcelanosa Group /equivalent make.



### Lifts

- Eight automatic lifts of Mitsubishi/Otis or equivalent make including private lifts
- Biometric security system: All passenger lifts will be equipped with biometric systems.



### Kitchen

- Granite platform with stainless steel sink.
- Separate Municipal tap (Manjeera or any other water provided by GHMC along with bore well water).
- Provision for fixing of water purifier, exhaust fan and chimney.
- Provision for geyser near the sink.



### Common area Washbasin

- Group or equivalent as per design.
- CP Fittings Group or equivalent as per design.



### Air-conditioning Centralized A/c



### Water supply

- Treated energized water supply for entire building with provision for individual under counter RO system Bis-certified/ DIN standard
- 24-hr Water supply.



### Electrical Installations

- Legrand premium modular switches and sockets or equivalent with fire retardant cable.
- Home automation: Full-fledged home automation system integrating all switches in the house, including security and burglar alarm systems systems (additional charges applicable)
- Internet, TV and telephone outlets are provided in halls and MBR



### General

- Airport grade security system
- Separate water meters
- Separate prepaid meter boxes for gas pipes
- Wi-fi access points for seamless connectivity
- Prepaid Electricity Meters
- 100% power back-up

### DISCLAIMER

By using or accessing the brochure, you agree with the Disclaimer without any qualification or limitation. 360LIFE reserves the right to terminate, revoke, modify, alter, add and delete any one or more of the terms and conditions outlined in the brochure. 360LIFE shall be under no obligation to notify the user of the amendment to the terms and conditions and the user shall be bound by such amended terms and conditions.

Computer generated images, walkthroughs and render images used on this brochure are the artist's impression and are an indicative of the actual designs. The imagery used on the brochure may not represent actuals or may be indicative of style only.

The information on this brochure is presented as general information and no representation or warranty is expressly or impliedly given as to its accuracy, completeness or correctness. It does not constitute part of a legal offer or contract. This brochure may unintentionally include inaccuracies or errors with respect to the description of a plot/ flat size, site plan, floor plan, a rendering, a photo, elevation, etc. Further the actual design / construction may vary in fit and finish from the one displayed in the information and material displayed on this brochure.

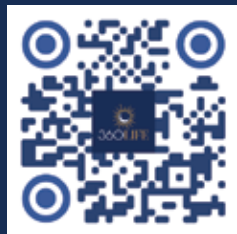
The user must verify all the details/features/specifications, including but not limited to the respective unit area, amenities, specifications and all other relevant terms independently with respect to the particular unit with our sales/ marketing team prior to concluding any decision for buying any unit in the project.

Not with standing anything, in no event shall the 360LIFE, their promoters, partners/ directors, employees and agents be liable to the visitor/ user for any or all damages, losses and causes of action (including but not limited to negligence), errors, injury, whether direct, indirect, consequential or incidental, suffered or incurred by any person/s or due to any use and/or inability to use this brochure or information, action taken or abstained through this brochure. While enough care is taken by the company/ Firm to ensure that information in the brochure are up to date, accurate and correct, the readers/ users are requested to make their independent enquiry before relying upon the same.



### Security Systems

- Security personnel: Trained security personnel will patrol the project round the clock.
- Video phones: Video phones will be provided inside each apartment to screen the visitors from the Ground floor lobby/entrance gate.
- CCTV Camera: Complete coverage by CCTV cameras will be provided in the outdoor areas, basement, security gate, common areas.
- Access Control Doors: Entry to the building will be restricted with biometric system in the ground floor lobby.
- Vehicle entry exit: Entry of Vehicles to the project will be controlled with boom barriers and security screening for maids & visitors.



| W: [www.360life.co.in](http://www.360life.co.in) | E: [enquiry@360life.co.in](mailto:enquiry@360life.co.in)

360LIFE SUSTAINABLE LUXURY HOMES LLP, Beside Cyber Convention,  
Off Hitex Road, Hitec City, Hyderabad, Telangana, 500084.

TSRERA REGISTRATION NUMBER P02500003674