



EMERALD

Project Name: EMERALD Commercial

Project Type: Commercial

About Abinandana:

Abinandana infra established in 2005 and it's 17 years of construction experience, successfully completed 45 projects and 12 are our ongoing projects.

Location Highlights:

- 1) Prime location in Manikonda (First Ever Mall).
- 2) 80 feet Road Facing.
- 3) Close to Public and Private Transports.
- 4) 3KM to Outer Ring Road (ORR).
- 5) 1 KM From Lanco Hills.

Project Address:

Marrichettu Circle,
Manikonda,
Hyderabad-500089.

Scan For Project Location



Project Details:

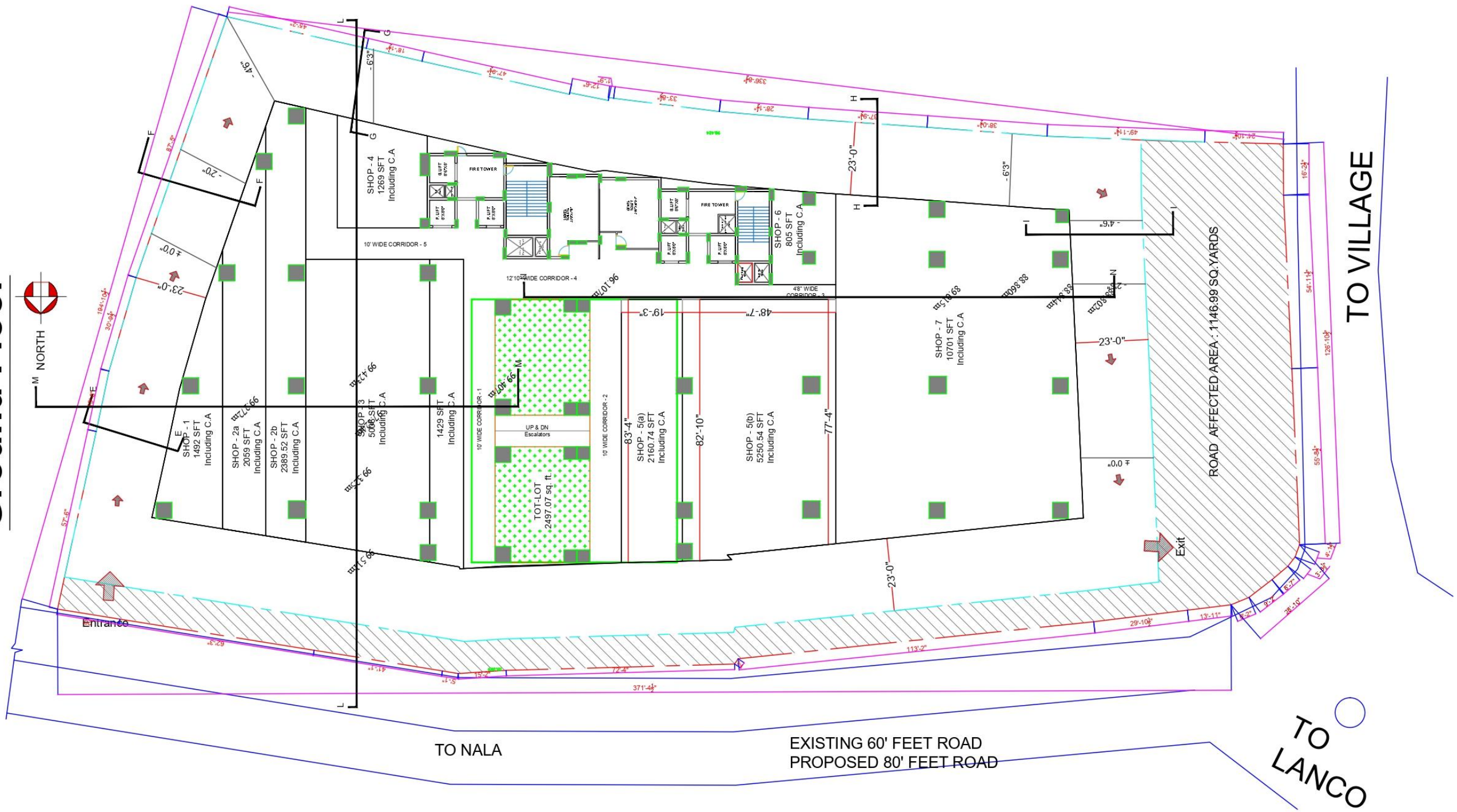
Total Land Area:	7000 Sq Yd
Total Construction Area:	320000 SFT
Total Floors:	G+8 Floor's

RERA NO. : P02400005934

For more Information contact to Marketing team



Ground Floor



FIRST FLOOR PLAN



SHOP - 1
10673.44 SFT
Including C.A.

SHOP - 2
3260.81 SFT
Including C.A.

SHOP - 3
560.76 SFT
Including C.A.

SHOP - 4
1798.07 SFT
Including C.A.

SHOP - 5
2347.71 SFT
Including C.A.

SHOP - 6
1858.30 SFT
Including C.A.

SHOP - 7
837.90 SFT
Including C.A.

SHOP - 8
1159.60 SFT
Including C.A.

SHOP - 9
2276.31 SFT
Including C.A.

SHOP - 10
4180.43 SFT
Including C.A.

SHOP - 11
2879.64 SFT
Including C.A.

TOT-LOT
2497.07 sq. ft.

UP & DN
Escalators

ROAD AFFECTED AREA : 1146.99 SQ. YARDS

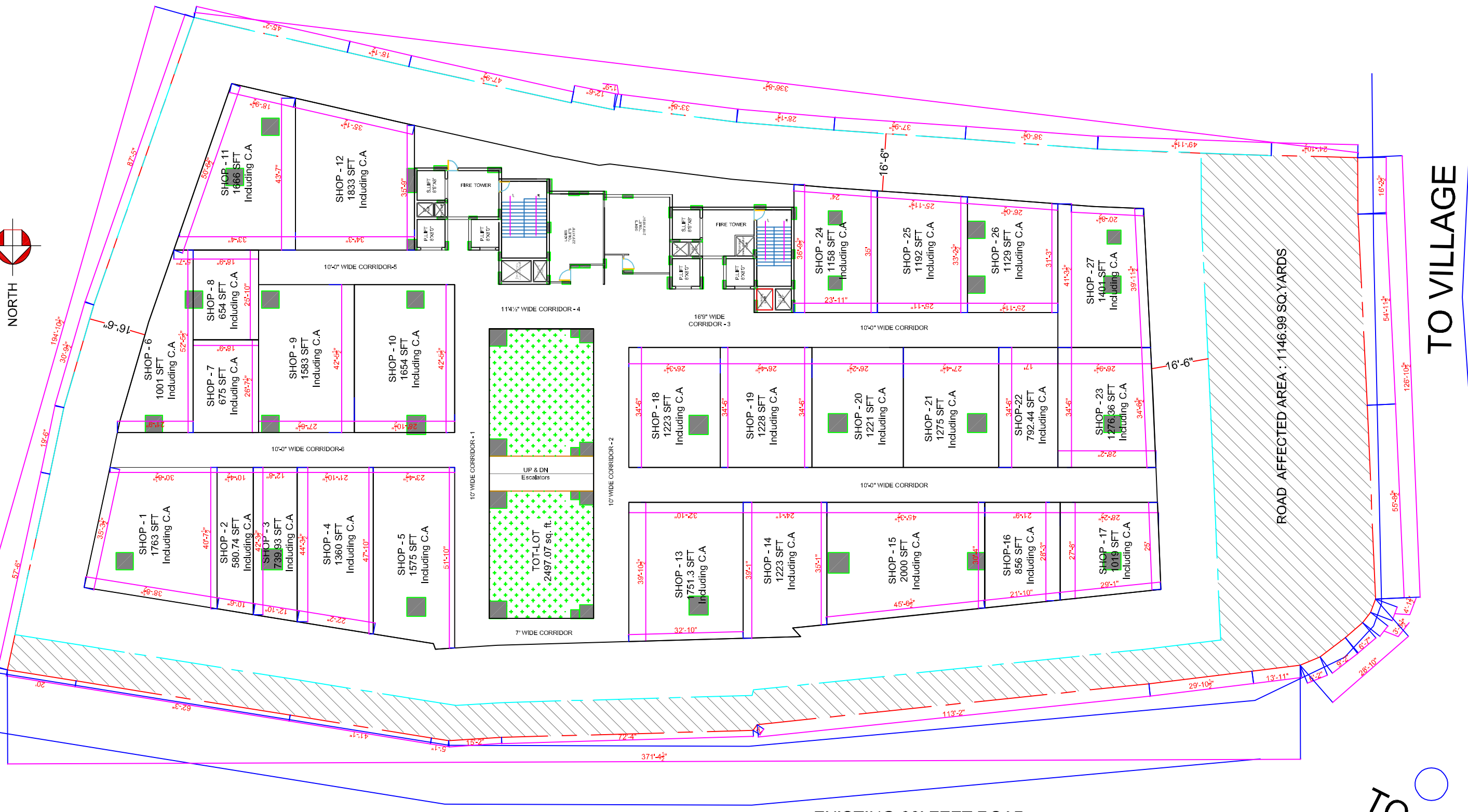
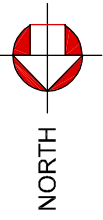
TO NALA

EXISTING 60' FEET ROAD
PROPOSED 80' FEET ROAD

TO LANCO

TO VILLAGE

Second Floor Plan



TO NALA

EXISTING 60' FEET ROAD
PROPOSED 80' FEET ROAD

TO LANCO

TO VILLAGE

ROAD AFFECTED AREA: 1146.99 SQ. YARDS

- SHOP - 1: 1763 SFT Including C.A.
- SHOP - 2: 580.74 SFT Including C.A.
- SHOP - 3: 739.93 SFT Including C.A.
- SHOP - 4: 1360 SFT Including C.A.
- SHOP - 5: 1575 SFT Including C.A.
- SHOP - 6: 1001 SFT Including C.A.
- SHOP - 7: 675 SFT Including C.A.
- SHOP - 8: 654 SFT Including C.A.
- SHOP - 9: 1583 SFT Including C.A.
- SHOP - 10: 1654 SFT Including C.A.
- SHOP - 11: 1466 SFT Including C.A.
- SHOP - 12: 1833 SFT Including C.A.
- SHOP - 13: 1751.3 SFT Including C.A.
- SHOP - 14: 1223 SFT Including C.A.
- SHOP - 15: 2000 SFT Including C.A.
- SHOP - 16: 856 SFT Including C.A.
- SHOP - 17: 1019 SFT Including C.A.
- SHOP - 18: 1223 SFT Including C.A.
- SHOP - 19: 1228 SFT Including C.A.
- SHOP - 20: 1221 SFT Including C.A.
- SHOP - 21: 1275 SFT Including C.A.
- SHOP - 22: 792.44 SFT Including C.A.
- SHOP - 23: 1276.36 SFT Including C.A.
- SHOP - 24: 1158 SFT Including C.A.
- SHOP - 25: 1192 SFT Including C.A.
- SHOP - 26: 1129 SFT Including C.A.
- SHOP - 27: 1401 SFT Including C.A.

TOT-LOT
2497.07 sq. ft.

UP & DN
Escalators

FIRE TOWER

FIRE TOWER

11 1/2" WIDE CORRIDOR - 4

16 5/8" WIDE CORRIDOR - 3

10'-0" WIDE CORRIDOR-5

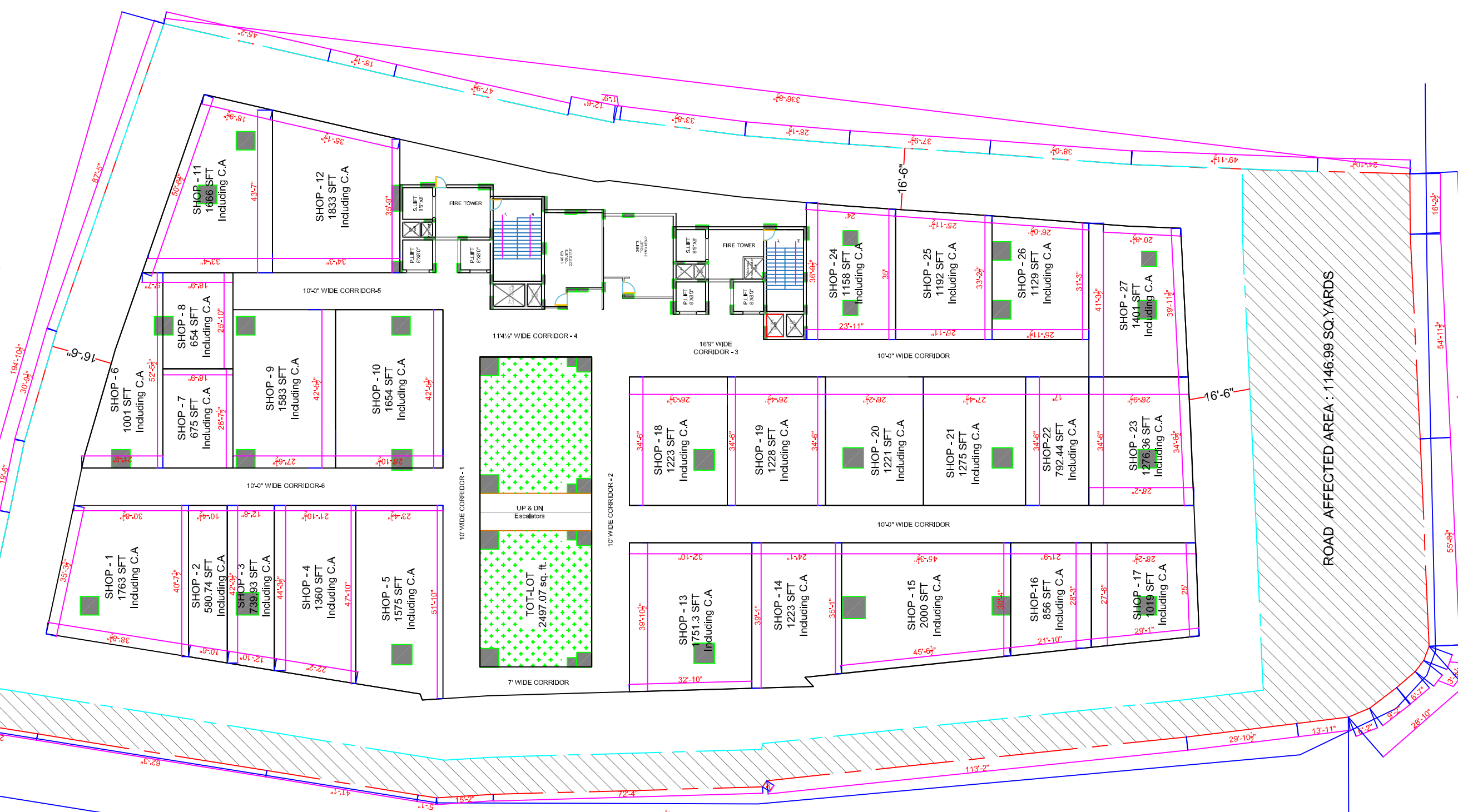
10'-0" WIDE CORRIDOR-6

10'-0" WIDE CORRIDOR

10' WIDE CORRIDOR - 1

10' WIDE CORRIDOR - 2

10'-0" WIDE CORRIDOR



THIRD FLOOR PLAN



TO NALA

EXISTING 60' FEET ROAD
PROPOSED 80' FEET ROAD

TO LANCO

TO VILLAGE

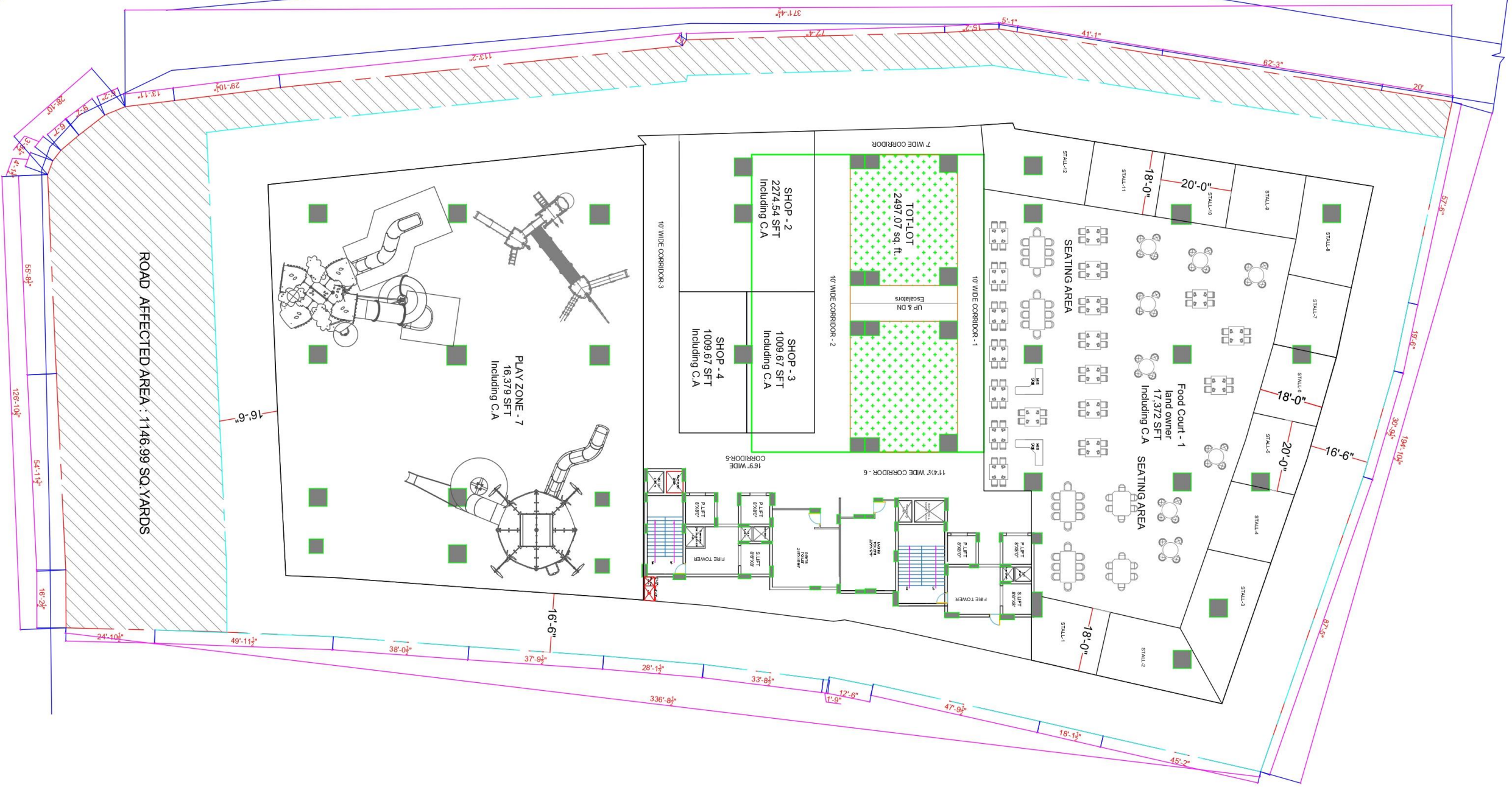
ROAD AFFECTED AREA : 1146.99 SQ. YARDS

TO LANCO

EXISTING 60' FEET ROAD
PROPOSED 80' FEET ROAD

TO NALA

TO VILLAGE

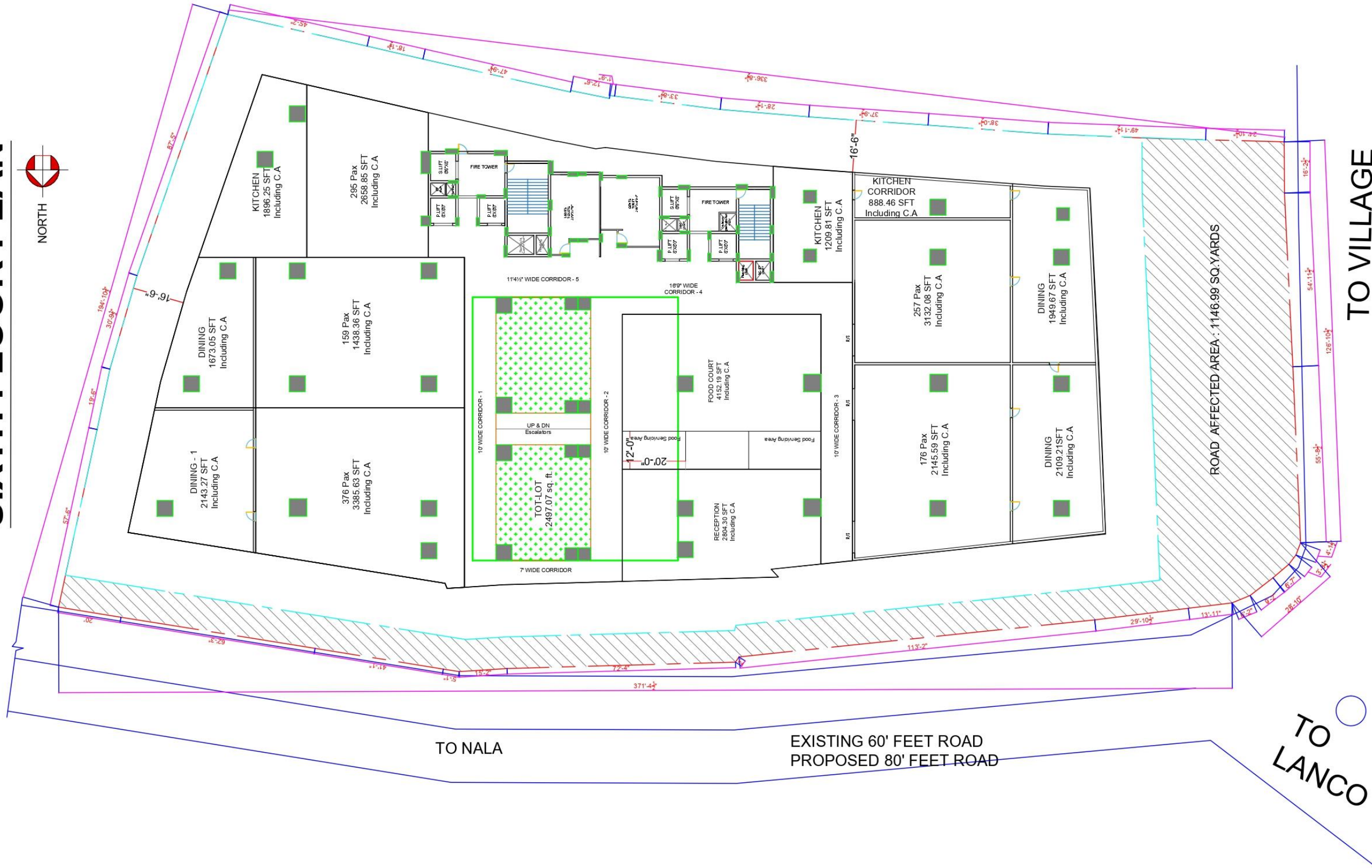


FOURTH FLOOR PLAN

FIFTH FLOOR PLAN



SIXTH FLOOR PLAN



SEVENTH FLOOR PLAN



TO NALA

EXISTING 60' FEET ROAD
PROPOSED 80' FEET ROAD

TO LANCO

TO VILLAGE

ROAD AFFECTED AREA : 1146.99 SQ. YARDS

EIGHTH FLOOR PLAN



TO NALA

EXISTING 60' FEET ROAD
PROPOSED 80' FEET ROAD

TO
LANCO

TO VILLAGE

ROAD AFFECTED AREA : 1146.99 SQ. YARDS

RESTAURANT-1
17182.07 SFT
Including C.A.

RESTAURANT-2
6884.02 SFT
Including C.A.

RESTAURANT &
PUB-3
12381.53 SFT
Including C.A.

KITCHEN
1149.98 SFT
Including C.A.

TOILET
2497.07 sq. ft.

10' WIDE CORRIDOR - 1

10' WIDE CORRIDOR - 2

16' WIDE CORRIDOR - 5

10' WIDE CORRIDOR - 4

10' WIDE CORRIDOR - 3

11 1/4" WIDE CORRIDOR - 6

FIRE TOWER

FIRE TOWER

Staircase

16'-0"

30'-9"

18'-6"

57'-6"

194'-10"

16'-9"

47'-9"

18'-1"

47'-9"

17'-6"

33'-6"

28'-1"

37'-9"

38'-0"

49'-1"

16'-6"

24'-10"

126'-10"

54'-1"

55'-9"

4'-4"

28'-10"

13'-11"

29'-10"

113'-2"

37'-1"

17'-8"

15'-2"

11'-1"

4'-2"

1'-0"