



**Aranya**  
KALANJALI

An offering of  
art to Nature



RERA : P02200006503

Green Cover Gated Community

**1.7**      **170**      **17**  
Acres    Smart Homes    Floors

**3 BHK Luxury Apartments**  
**1995 SFT to 2730 SFT**



The annual rings of a tree are made each year when a new layer of wood is added to the trunk and branches of the tree. This new layer grows below the protective bark. This logo symbolically represents the ever-evolving life of the residents through the zone rings while the protective outer layer represents the home in which they reside, Aranya Kalanjali.

Aranya Kalanjali is a luxurious and sustainable residential community aimed at providing dwellers with a green retreat in the heart of the city. Intending to create a harmonious and calming atmosphere reminiscent of a tranquil forest setting, we've used natural materials and sustainable features.

A sense of community and belonging is another key aspect of the project concept. The club house and communal spaces in the building are designed to foster social interaction and shared living.

Forest-inspired artwork and natural elements throughout the building serve as conversation starters and points of connection for residents.



Beams &  
Columns  
Developers Pvt. Ltd.

**“Our Beams and  
Columns make  
your house, your  
love and dreams  
make it a home!”**

The foundation of our company is Customer Centric Design. Years of experience in the field have enabled our directors to successfully execute a large number of commercial and residential projects. Our team of Architects, Engineers, Project Managers and Skilled labourers work together efficiently to deliver high quality products in a timely manner.

Our passion for bringing together sustainability and spaces is not limited to materials and construction methodology, we ensure our projects are sustainable on the pockets of our customers as well. Keeping in mind these values and adding a holistic living experience, we bring you,  
**‘Aranya Kalanjali’.**



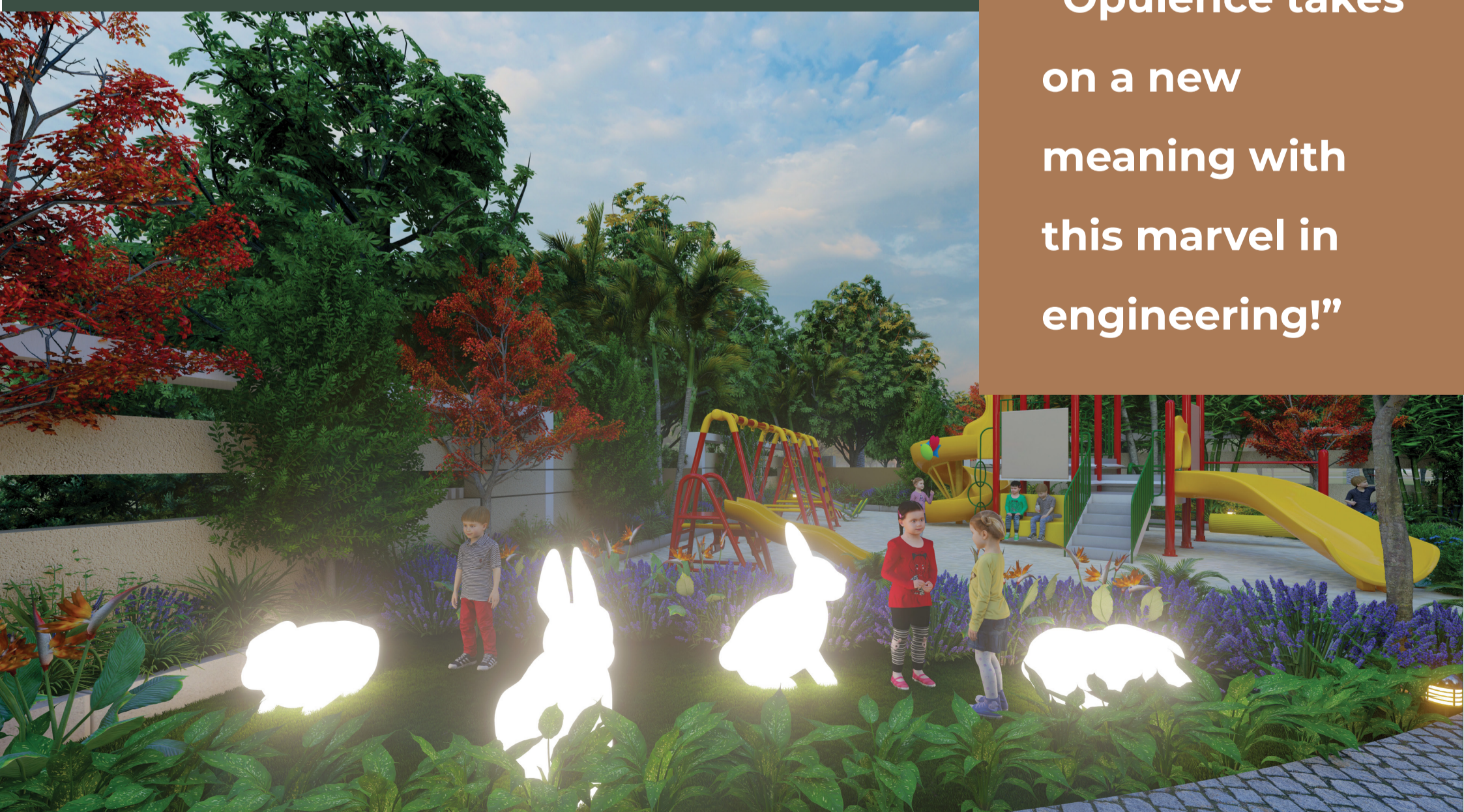
With its suburban setting, the area offers a relaxed and comfortable living experience away from the hustle and bustle of the city. But don't let the peaceful surroundings fool you – essential services, schools, colleges and several recreational centers are located just a few blocks away, making it easy to get what you need quickly without having to travel too far.



# LOCATION MAP



Scan to find us!



**“Opulence takes on a new meaning with this marvel in engineering!”**



## Fitness & Sports

- A/C Gym
- Terrace Swimming Pool
- Jogging Track
- Indoor Games
- Outdoor Games
- Children Play Area
- Cricket Net
- Yoga Studio

## Smart Homes

- Video Door Phones
- Home Automation

## Safety

- Fire Infra
- Generator Backup
- Security Surveillance
- Infra
- Solar Fencing
- Piped Gas Lines





## Environmental Conservation

STP

Rain Water Harvesting

Garbage Chute Shaft

## Communal Spaces

Multi-purpose Hall

Guest Suites

Roof top Deck

Creche

## 4 - FLOOR CLUBHOUSE







**Tranquility of suburban  
living with the perks  
of the city**

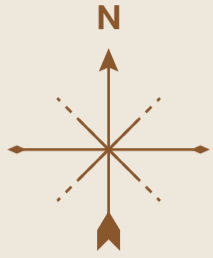


6M WIDE GREEN BELT



7M WIDE DRIVEWAY

6M WIDE GREEN BELT



**Master Plan**

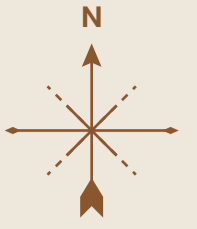
**17 floors**  
10 homes/floor  
2 Cellars + Stilt

CLUB HOUSE

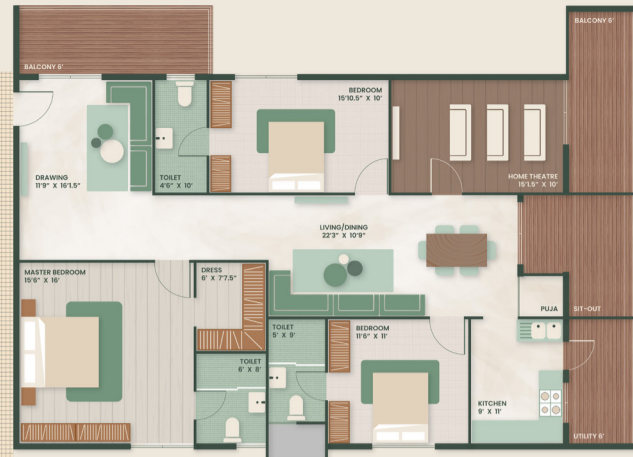
TOT LOT

FLAT NO.	FACING	CARPET AREA	BALCONY AREA	SALABLE AREA
1.	3BHK - WEST	1658.09	388.26	2660
2.	3BHK - WEST	1284.68	255.65	2000
3.	3BHK - WEST	1285.11	249.4	1995
4.	3BHK - WEST	1285.11	249.4	1995
5.	3BHK - WEST	1667.89	434	2730
6.	3BHK - EAST	1272.94	421.63	2330
7.	3BHK - EAST	1340.88	275.45	2100
8.	3BHK - EAST	1340.88	275.45	2100
9.	3BHK - EAST	1340.88	275.45	2100
10.	3BHK - EAST	1358.96	470.28	2375

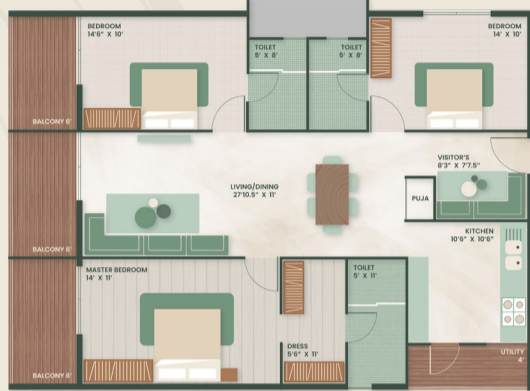
# FLOOR PLAN



FLAT - 10 | 2375 | EAST FACING



FLAT - 1 | 2660 | WEST FACING



FLAT - 9 | 2100 | EAST FACING



FLAT - 2 | 2000 | WEST FACING



FLAT - 8 | 2100 | EAST FACING



FLAT - 3 | 1995 | WEST FACING



FLAT - 7 | 2100 | EAST FACING



FLAT - 4 | 1995 | WEST FACING



FLAT - 6 | 2330 | EAST FACING



FLAT - 5 | 2730 | WEST FACING

Contact us at

+91 991 200 2000 or +91 966 699 8119

sales@beamsandcolumns.in

# Product Specifications

## Superstructure & Elevation

- RCC Frame Structure
- Standard Brick walls with AAC Blocks
- Beautiful elevation with rich elements and covers.

## Paint

- Internal Walls – Luppum Finish with Emulsion Paint (Asian or Equivalent)
- External Walls – Asian Ace wather shield emulsion paint or equivalent.

## Flooring

- Wooden Flooring in Master Bedroom and Home Theater.
- 800mm X 800mm double charged vitrified tiles of reputed make in rest of the flat.

## Doors

### Main Door

- Teak wood frames with veneered shutters and PU Polishing with necessary brass fittings.

### Internal Doors

- Teak wood frame with laminated doors and necessary brass fittings.

## Kitchen

- Granite Platform with stainless steel sink, CP fittings and 2' height ceramic tiles dado over granite countertop.
- Gas pipe line.

## Lifts

- Branded Automatic lifts of reputed make with rescue device and V3F for emergency efficiency. (Schindler or Equivalent)

## Windows

- All window frames and sliding shutters will be of UPVC with glass paints, safety grills and mosquito mesh.

## Plumbing

- CPVC fittings for water lines and PVC fittings for drainage system (Truflo or equivalent)

## WTP & STP

- Treated water made available through an exclusive water softening and purification plant

## Electrical

- Concealed piping with copper wires and modular switches with adequate points for power and lighting. Power outlets for air conditioners in living and bedrooms.
- Smart Home solutions (Keus or equivalent).

## Power Back-Up

- 100% D.G Set backup with acoustics enclosure

## Communication Systems

- Provision for Cable TV and Internet in the Living Room.
- Video Enabled Intercom.

## Bathrooms

- Ceiling height dado glazed ceramic tiles of reputed make.
- All Bathrooms consist of washbasin, CP fittings and EWC with concealed flush tank of reputed make (Kohler or equivalent)

## Fire Safety

- Full-fledged fire fighting systems as per fire norms.



**Beams &  
Columns**  
Developers.LLP

## Contact us at

**+91 991 200 2000 or**

**+91 966 699 8119**

**sales@beamsandcolumns.in**