



Project By:
AAMRAPALI DEVELOPERS

Site: Aamrapali Luxuria, Block No:- 68 & 69, Next to Samanvay Santorini I,
Near Ramkrishna Paramhans Hospital, Kalali, Vadodara – 390 012

+91 90169 40671, 89800 25379
aamrapalidevelopers.sales@gmail.com
aamrapalivadodara.com

Architect:
Rishi Architect



Structure Consultant :
Zaria Associates

Notes: (1) Premium quality materials or equivalent branded products shall be used for all construction works as per Structure Engineer design (2) External changes are strictly not allowed (3) Development charges, stamp duty, documentation charges, and all other Government or municipal taxes, GST, MG/VCL Connection Charges will be charged separately (4) In case of cancellation, the amount will be refunded only after rebooking of the same unit. Payment will be made after deducting Rs. 50,000/- as a cancellation charge from the paid amount. (5) Possession will be given after three months, from the date of receiving the Full Consideration amount and all other charges against the unit. (6) Extra work will commence at the cost/risk of the Purchaser but no change in elevation and plan. Only after payment of the cost quotation. (7) The promoter can not be held responsible for any inaccuracy in this contents. (8) All plans, information and specification are subject to changes may be required by the promoters and can not form part of an offer, contract or agreement. (9) Amenities and specification are not consider in shops. (10) T&C Apply*

RERA Website: gujrera.gujarat.gov.in | RERA Registration No.:



QR Code for Location



आम्रपाली Luxuria



4 BHK BUNGLOW | 2 & 3 BHK APARTMENTS | SHOPS



Lavish Homes For Luxurious Lifestyle

Enter a private world built to perfection and filled with indulgences. Step into a rare paradise that offers small joys and wraps you in big luxuries.

Welcome to Aamrapali Luxuria, a grand project of 4BHK Bunglows, 265 BHK Apartments and smart road-facing retail shops, nestled in one stunning campus. Intelligent planning ensures utmost convenience and exclusivity for all. Set in the serene yet fast-growing locality of Kalali, your homes here are all set to bring you a life of luxury, comfort and convenience.



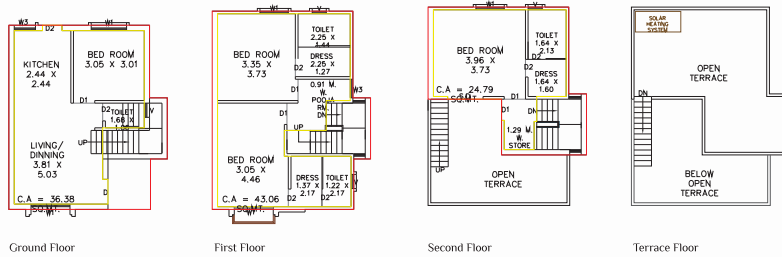
Layout Plan

Amenities

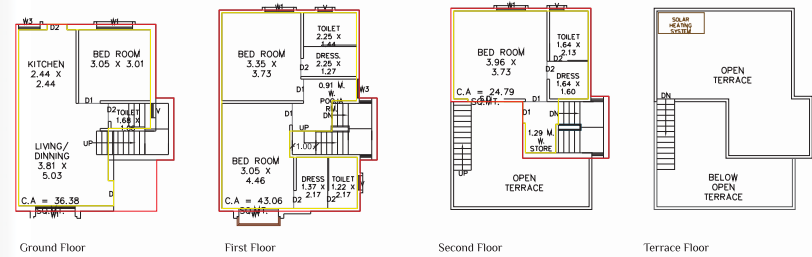
- CLUB HOUSE
- LANDSCAPE GARDEN
- POWER BACKUP FOR TOWERS
- CHILDREN PLAY AREA
- ELEGANT ENTRANCE GATE
- WITH SECURITY
- CABIN
- 24/7 SECURITY
- RAIN WATER HARVESTING SYSTEM
- CORPORATION DRAINAGE FACILITY
- INTERNAL RCC ROAD WITH PAVER BLOCK



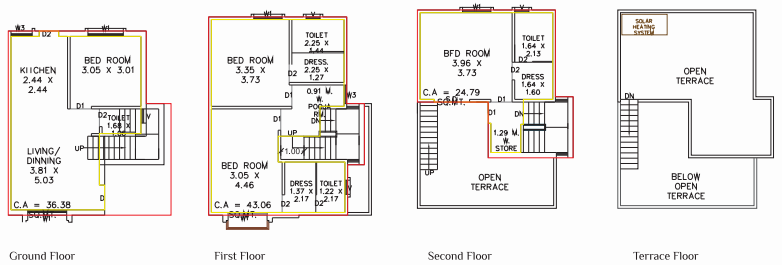
Type A (Triplex 1, 14, 15, 28, 29, 42, 43)



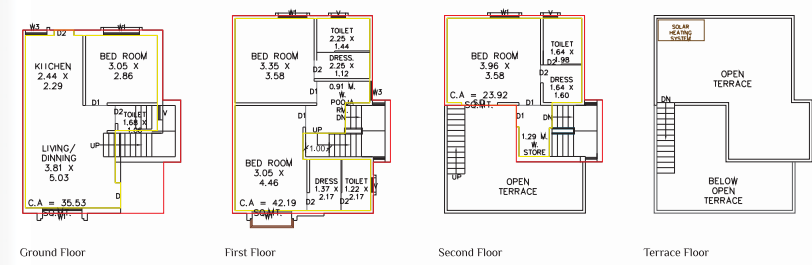
Type A (Triplex 7, 8, 21, 22, 35, 36)



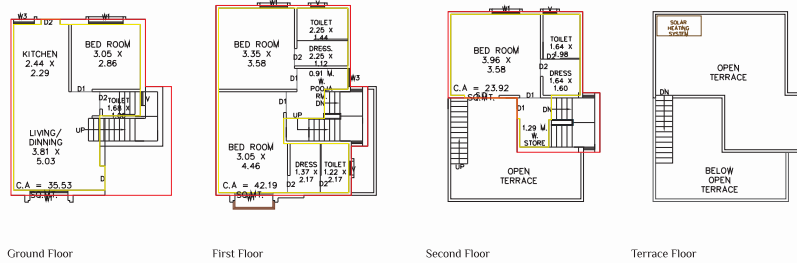
Type A (Triplex 23 to 27, 30 to 34, 37 to 41)



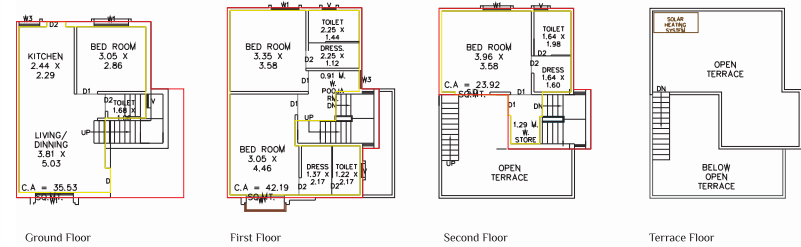
Type A (Triplex 62, 63, 74, 75, 81, 86, 87, 92)



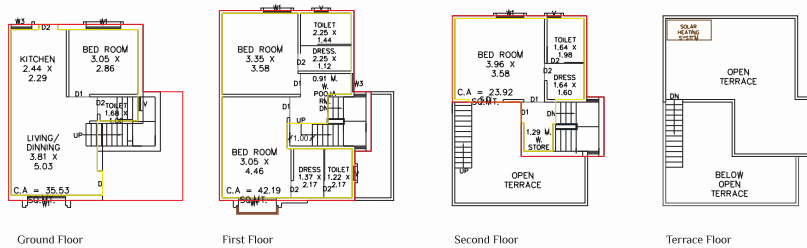
Type A (Triplex 58 to 61, 64 to 67)



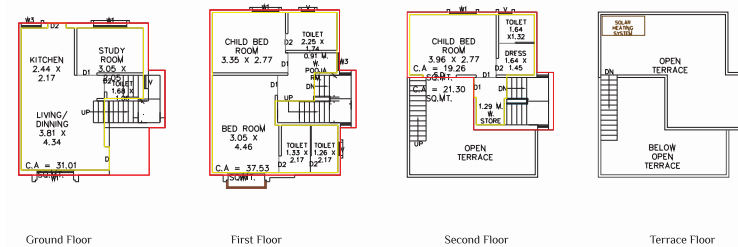
Type A (Triplex 82 To 85, 88 To 91)



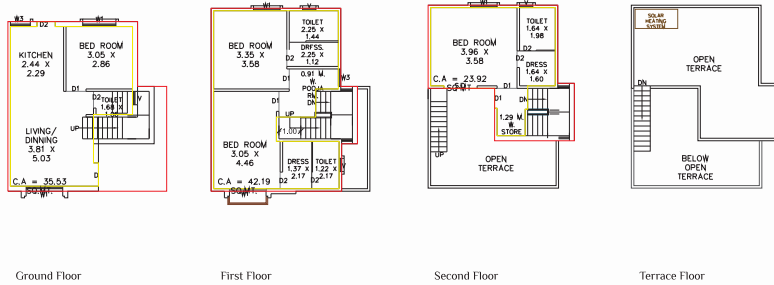
Type A (Triplex 70 to 73, 76 to 79)



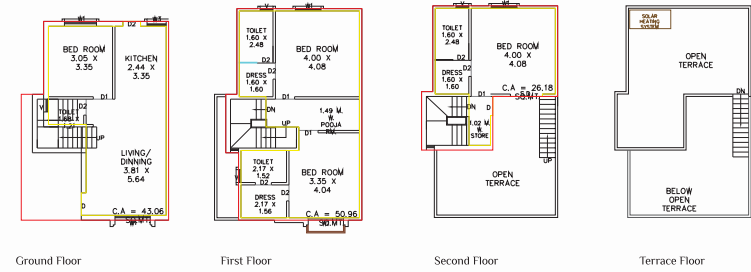
Type A (Triplex 50)



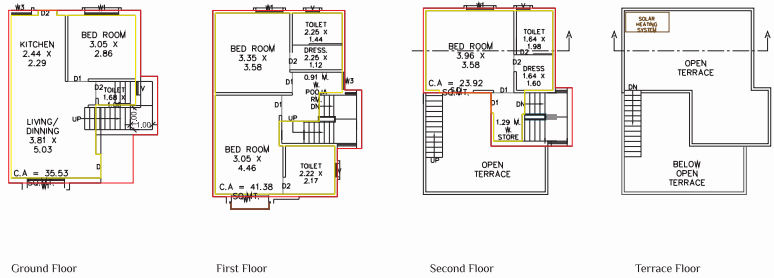
Type A (Triplex 51)



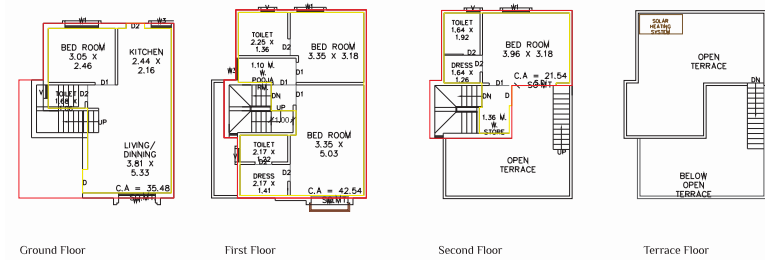
Type B (Triplex 46 & 47)



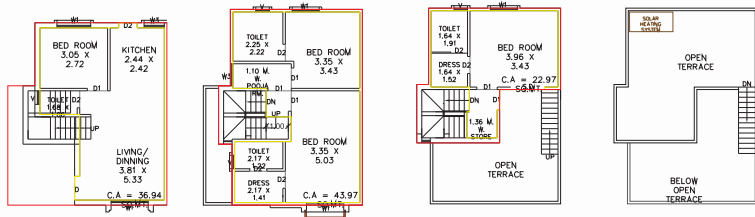
Type A (Triplex 69)



Type C (Triplex 52)

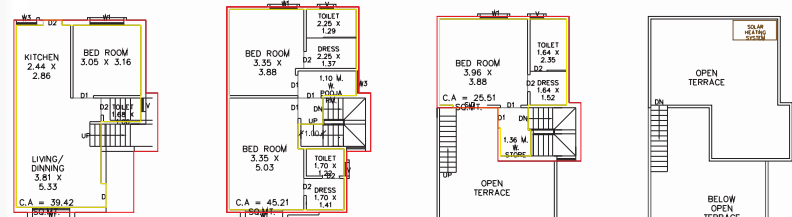


Type C (Triplex 53)



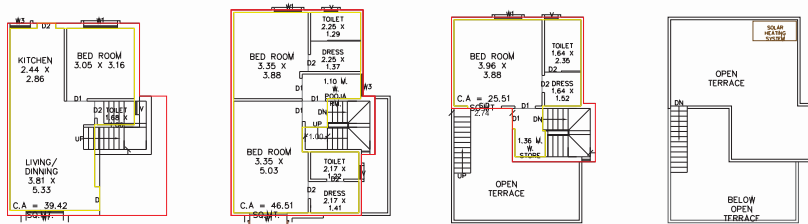
Ground Floor First Floor Second Floor Terrace Floor

Type C (Triplex 56)



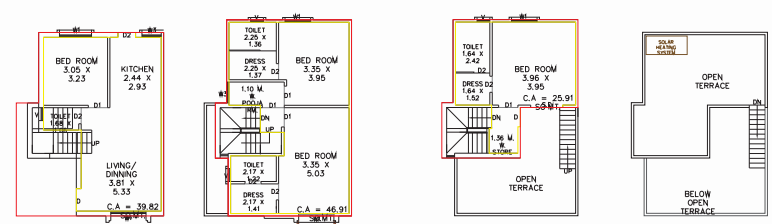
Ground Floor First Floor Second Floor Terrace Floor

Type C (Triplex 55)



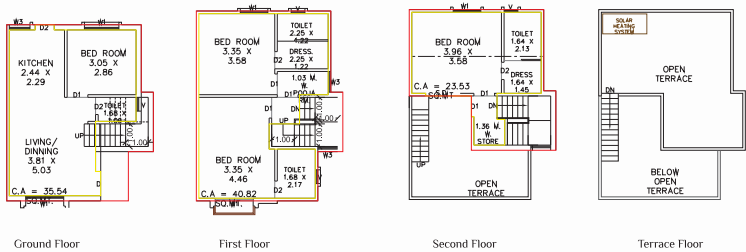
Ground Floor First Floor Second Floor Terrace Floor

Type D (Triplex 44 & 45)

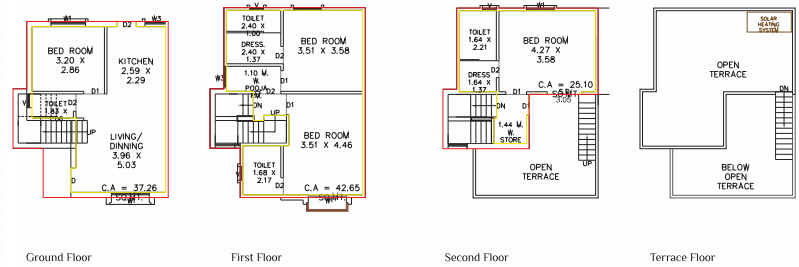


Ground Floor First Floor Second Floor Terrace Floor

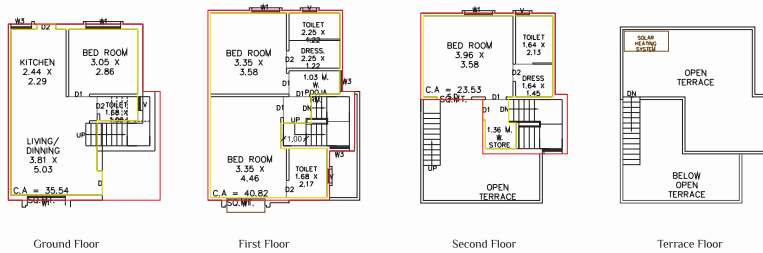
Type D (Triplex 93,99)



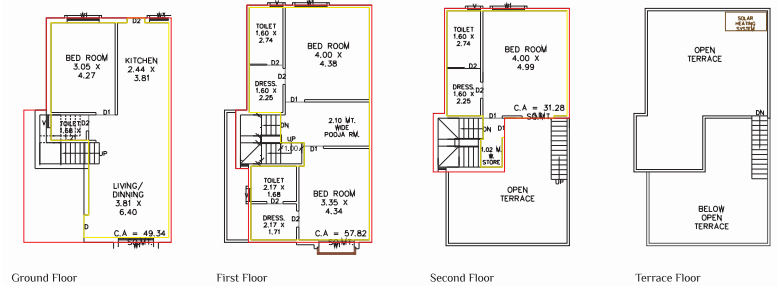
Type E (Triplex 57, 68, 80)



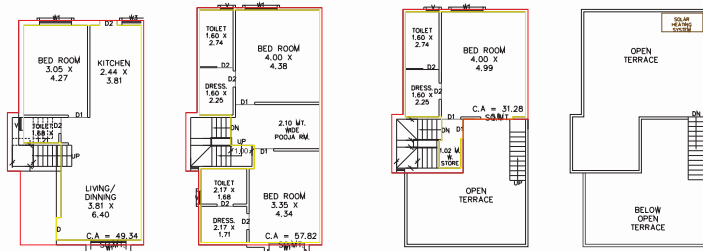
Type D (Triplex 94 To 98)



Type F (Triplex 48)



Type F (Triplex 49)



Ground Floor

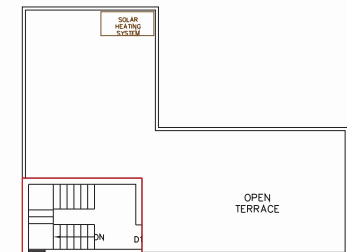
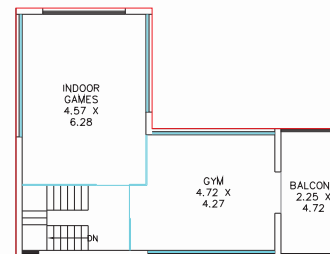
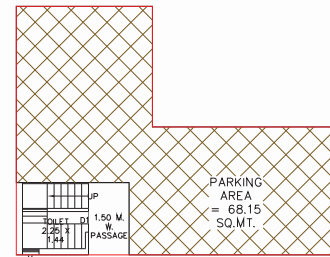
First Floor

Second Floor

Terrace Floor



Club House





Specifications

STRUCTURE :-

- EARTHQUAKE RESISTANCE RCC FRAME STRUCTURE AND MASONARY WORK AS PER STRUCTURE ENGINEERS DESIGN.
- ELEVATION WORK AS PER ARCHITECT DESIGN.

FINISH :-

- INTERNAL WALLS – SMOOTH CEMENT PLASTER FINISH
- EXTERNAL WALLS – DOUBLE COAT PLASTER

KITCHEN :-

- GRANITE PLATFORM WITH S.S. SINK AND TILES UPTO LINTEL LEVEL

WATER SUPPLY:

- UNDERGROUND AND OVERHEAD WATER TANK

BATHROOMS :-

- PREMIUM CERAMIC TILES UP TO LINTEL LEVEL. BRANDED QUALITY BATH FITTINGS AND SANITARY WARES WITH CONCEALED PLUMBING.
- GYSER POINTS IN ALL BATHROOMS.

FLOORING :-

- VITRIFIED TILES FLOORING IN ALL ROOMS.

ELECTRIFICATION :-

- CONCEALED STANDARD QUALITY ISI WIRING, MCB / ELCB AND BRANDED MODULAR SWITCHES WITH SUFFICIENT ELECTRICAL POINTS IN ALL ROOMS.

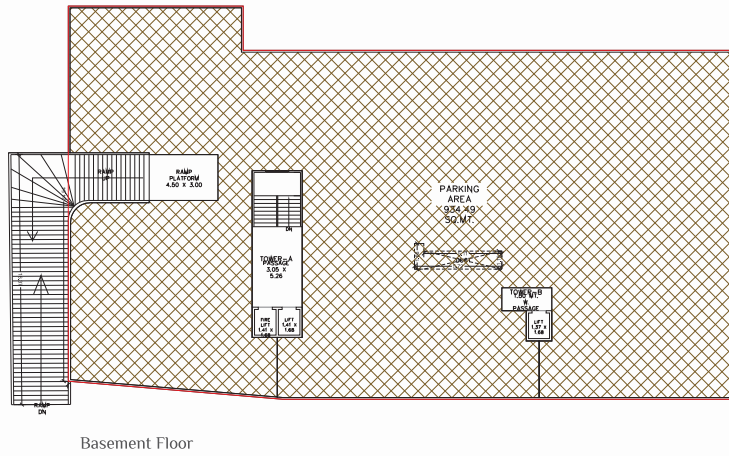
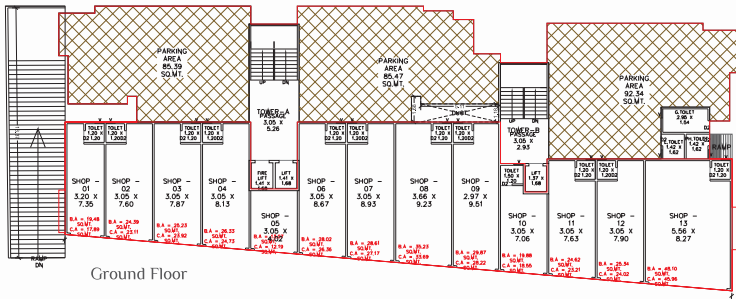
DOORS & WINDOWS :-

- MAIN DOOR – HIGH QUALITY WOODEN FRAME DOOR AND LAMINATE ON FRONT SIDE AND STANDARD QUALITY LOCK.
- INTERNAL DOORS – FLUSH DOORS WITH WOODEN FRAME.
- **FOR FLATS:** POWDER COATED / ANODIZED ALUMINUM SLIDING WINDOWS WITH MOSQUITO NET.
- **FOR BUNGALOWS:** POWDER COATED / ANODIZED ALUMINUM SLIDING WINDOWS WITH MOSQUITO NET WITH SAFETY GRILL.

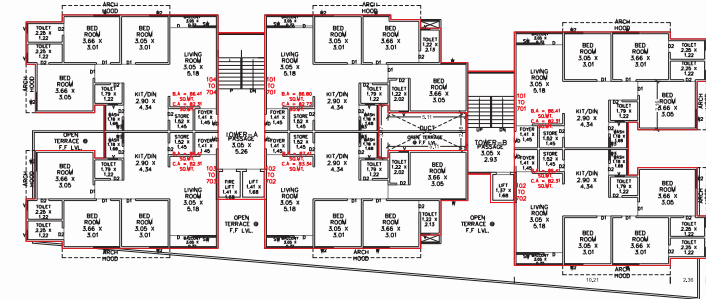
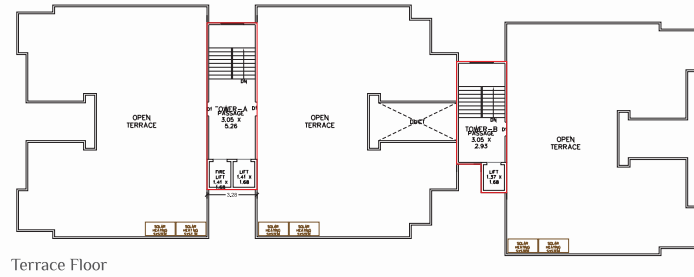
PAINT :-

- INTERNAL WALLS – DISTEMPER PAINT WITH BIRLA PUTTY.
- EXTERNAL WALLS – 100% ACRYLIC PAINT.

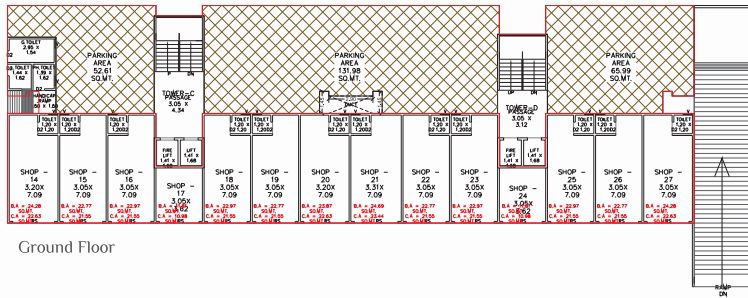
Tower A & B



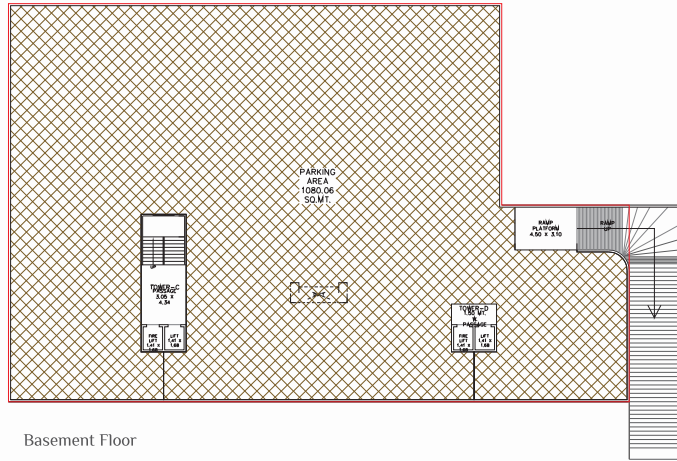
Tower A & B



Tower C & D

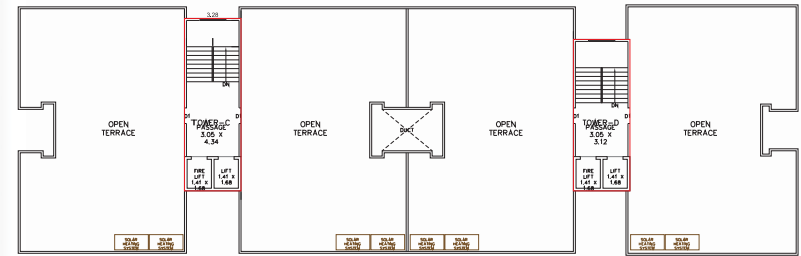


Ground Floor

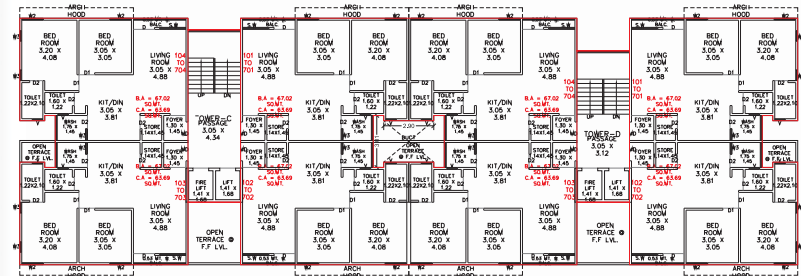


Basement Floor

Tower C & D



Terrace Floor



Typical Floor (1st to 7th floor)