



avantika

finding the happiness...you desire



Experience Premium Living
DISCOVER EXQUISITE HOMES
IN PRIME LOCATION
BANDLAGUDA JAGIR

ARUDRA

BANDLAGUDA JAGIR

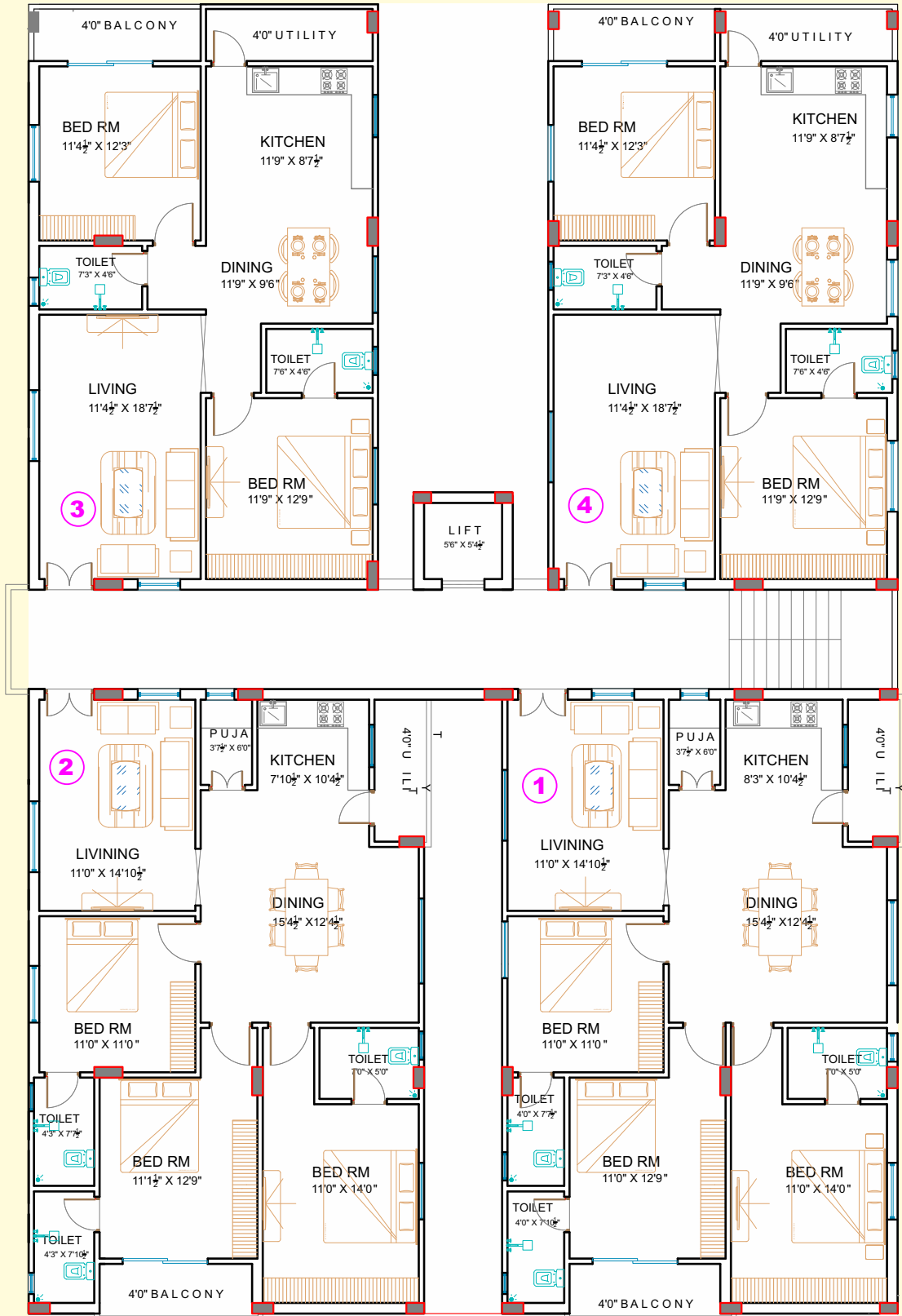
Avantika Constructions welcomes you to experience star-studded living in its opulent residential enclave. Here, homes radiate exuberance and elegance making it as starry as the ones in the constellation. Come, make home!

ARUDRA, a gem in celestial living offers luxurious 2 & 3BHK apartments at the heart of Bandlaguda Jagir, Hyderabad. Every detail in these apartments radiates brilliance in design and planning for you to enjoy an opulent lifestyle. Nestled strategically, Arudra invites you to an abode that mirrors the celestial charm of its namesake.

Unwind, rejuvenate, and dwell in a celestial haven where serenity swings with sophistication. For life to illuminate with a brightness that is a joy to experience.

RERA No: P02400007457





1 & 2 FLATS

3 BHK

1545 SFT

Carpet Area: **1152.5** Sq.ft

Balcony: **43.25** Sq.ft

Utility: **40.25** Sq.ft

Plinth: **1236** Sq.ft



3 & 4 FLATS

2 BHK

1270 SFT

Carpet Area: **919** Sq.ft

Balcony: **47.00** Sq.ft

Utility: **50.00** Sq.ft

Plinth: **1016** Sq.ft

PUSHYAMI

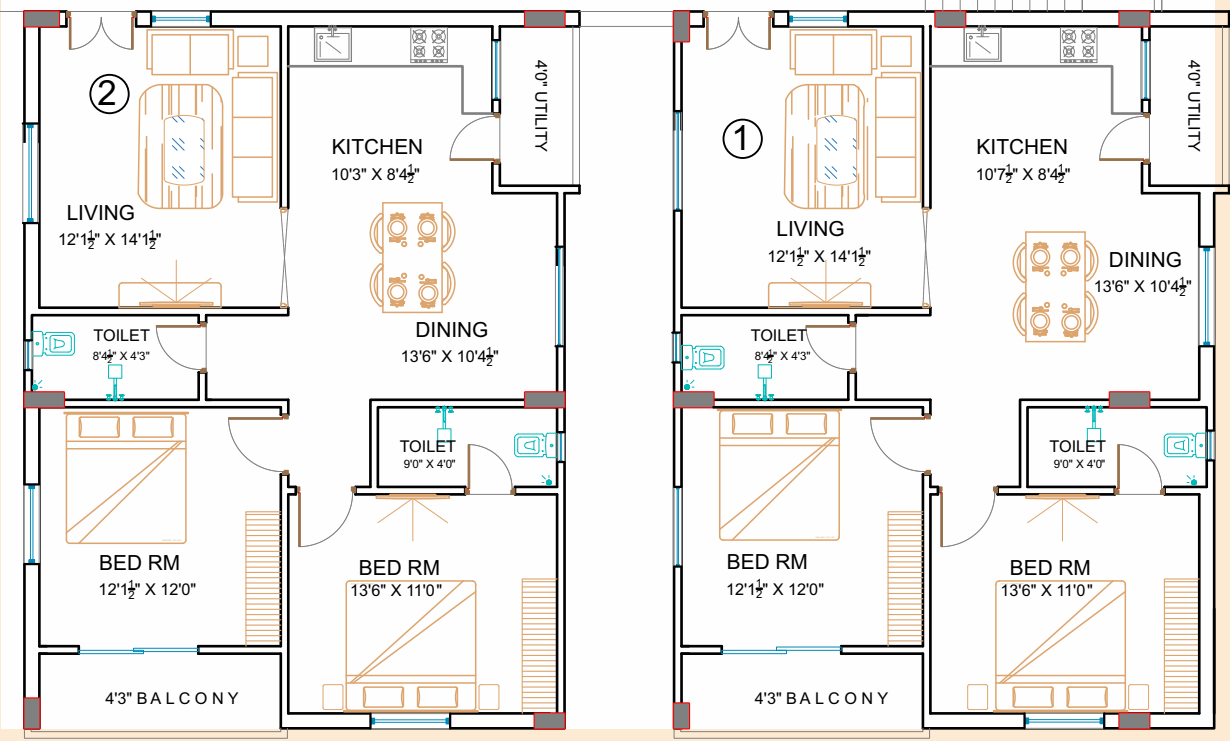
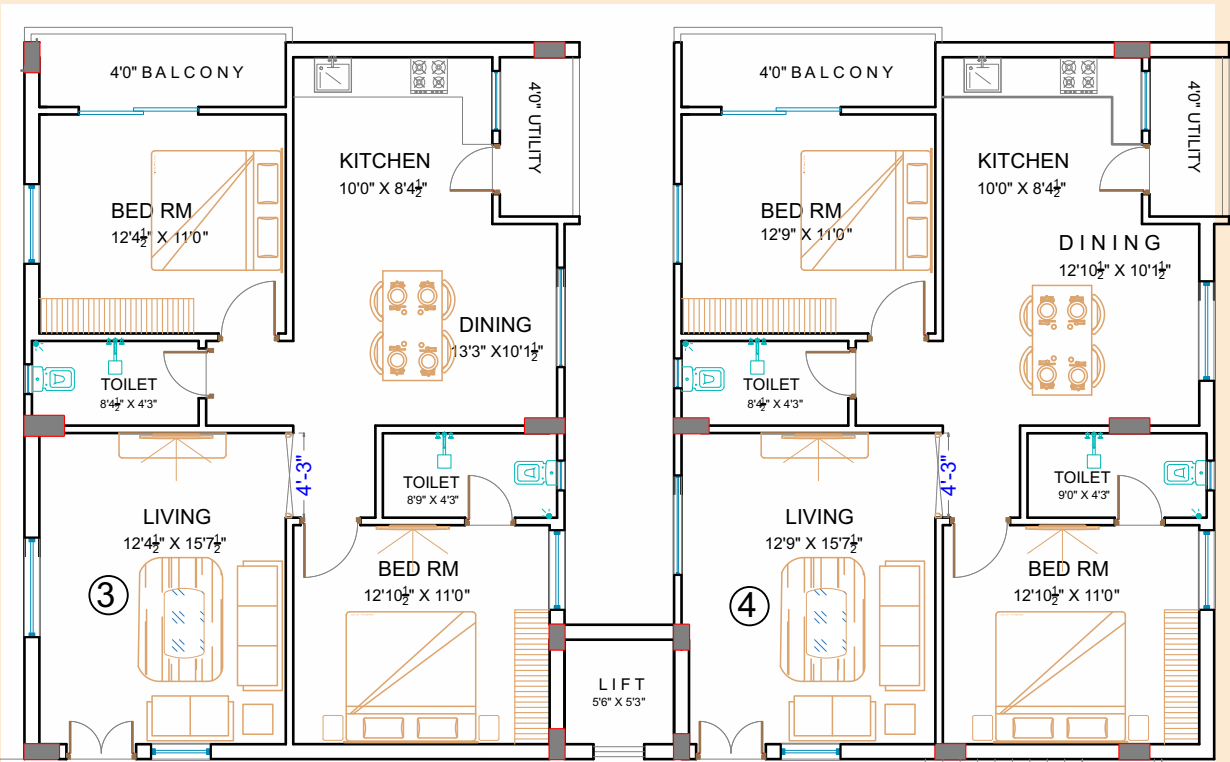
Avantika Constructions welcomes you to experience star-studded living in its opulent residential enclave. Here, homes radiate exuberance and elegance making it as starry as the ones in the constellation. Come, make home!

PUSHYAMI, the 2 BHK residential conclave is a tribute to a lifestyle full of starry splendors. It is here where you will get to experience the best that life has to offer starting from location to features and many more luxurious amenities. Life thrives with glowing bliss and we invite you to be a part of this infectious brightness.

Unwind, rejuvenate, and dwell in a celestial haven where serenity swings with sophistication. For life to illuminate with a brightness that is a joy to experience.

RERA No: P02400007410





2 BHK
1240 SFT

Carpet Area: **910.5** Sq.ft
 Balcony: **49.50** Sq.ft
 Utility: **32.00** Sq.ft
 Plinth: **992** Sq.ft



PUNARVASU

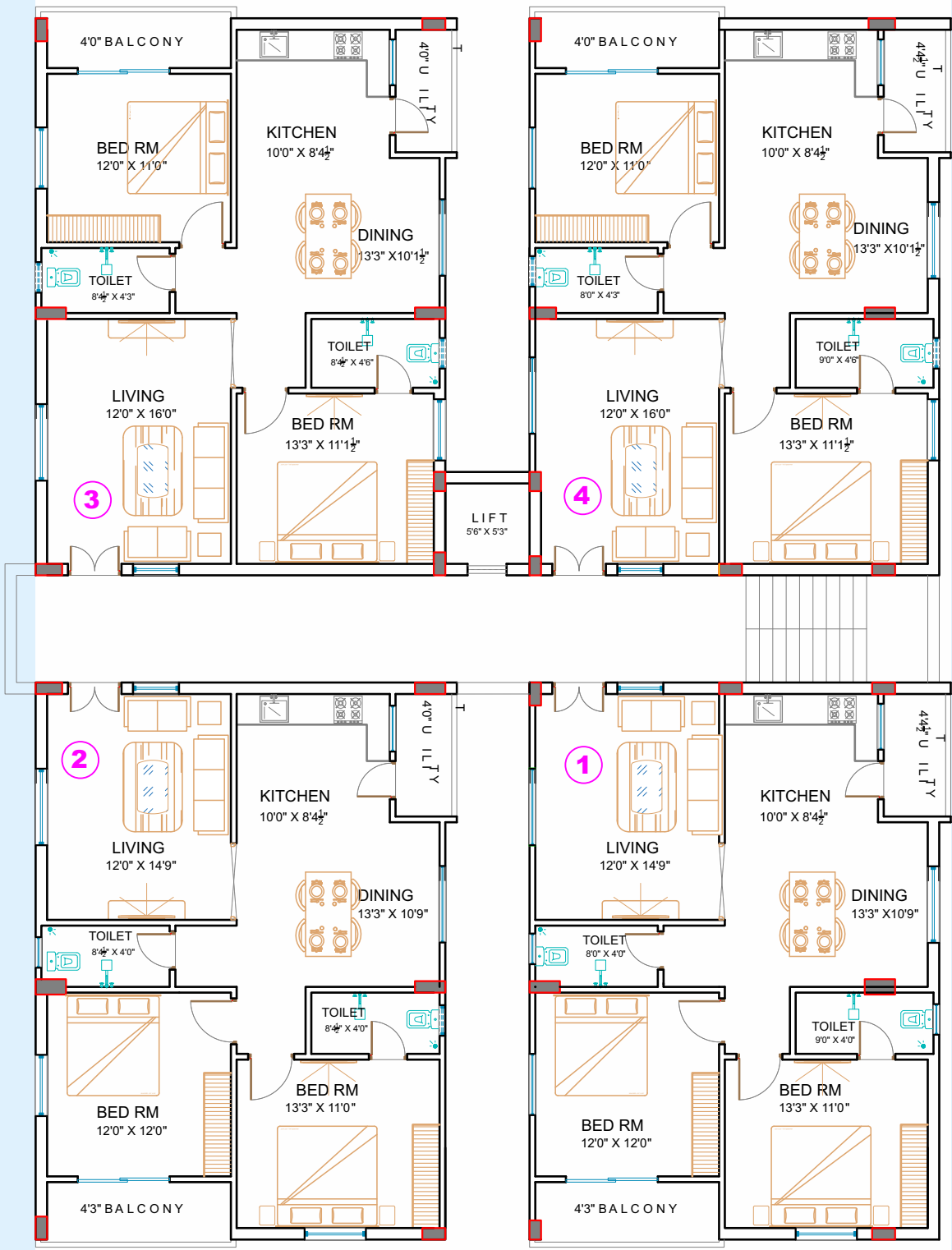
Avantika Constructions welcomes you to experience star-studded living in its opulent residential enclave. Here, homes radiate exuberance and elegance making it as starry as the ones in the constellation. Come, make home!

PUNARVASU another esteemed star in urban living awaits you to experience homes that reflect the intelligence and charm in true essence. These 2BHK apartments are designed with modern features and amenities to offer you a sparkling lifestyle replete with best-in-class luxuries. Even the location is carefully chosen for you to enjoy a living full of appreciated benefits.

Unwind, rejuvenate, and dwell in a celestial haven where serenity swings with sophistication. For life to illuminate with a brightness that is a joy to experience.

RERA No: P02400007455





2 BHK
1235 SFT

Carpet Area: **910.5** Sq.ft
Balcony: **48.00** Sq.ft
Utility: **34.50** Sq.ft
Plinth: **992** Sq.ft





Project Features

- HMDA-Approved
- 2 & 3 BHK Apartments
- Spacious Living Areas: 1235 sq ft to 1545 sq ft
- Premium Quality Construction
- Vastu Compliant
- Continuous Water Supply
- 24-hour security Measures:
- Intercom system & CCTV surveillance
- 24-hour power backup

SPECIFICATIONS

FOUNDATION & STRUCTURE

RCC Framed Structure : RCC framed Structure to withstand Wind & Seismic Loads

Super Structure : 9" Thick Red Brick work for External Walls & 4.5 " Thick Red Brick Work for Internal Walls

PLASTERING

Internal : 2 Coat of Plastering with sponge finish for Walls and Ceiling with Cement Mortar

External : 2 Coats of Plastering for Walls with Cement Mortar

DOORS & WINDOWS

Main Door : M.T Wood door frame with properly seasoned African Teak wood, manufactured hard wood veneered flush door shutter finished with good quality melamine polish & hardware of Reputed make.

Internal Doors & Utility Doors : M.T Wood door frame with properly seasoned African Teak wood, manufactured hard wood door frame & veneered flush door shutter finished with good quality melamine polish & hardware of Reputed make.

Bathroom Doors : M.T Wood door frame with properly seasoned African Teak wood, manufactured hard wood door frame & veneered flush door shutter finished with one side good quality melamine polish and another side Phenolic film with Chemical Treatment & hardware of Reputed make.

French Doors : uPVC Door frame with Plain Glass Paneled Shutters of Reputed make

Windows : uPVC Window Frame with Plain Glass Shutter of Reputed make with provision for Mosquito Net/Mesh

PAINTING

External : Combination of Texture and Cement based Putty with a coat of Primer and two coats of Emulsion Paint

Internal : Two coats of Cement based Putty with a coat of Primer and two coats of Plastic Emulsion Paint

Flooring : Drawing, Dining, All Bedrooms & Kitchen : 800 x 800 mm size double charged Vitrified Tiles of Reputed make

Bathrooms : Anti-Skid Ceramic Tiles of Reputed make

Corridors : Marble / Granite flooring

Balconies : Rustic Ceramic Tiles of Reputed make

Utility : Rustic Ceramic Tiles of Reputed make

Staircase : Granite Stone

Parking & Driveways : UDF as per Design

TILE CLADDING :

Bathrooms : Glazed Ceramic tiles dado up to 7ft. Height of Reputed make

Utilities : Glazed Ceramic tiles dado up to 3ft. Height of Reputed make

Utility / Wash Area : Provision for Washing Machine & wet area for Washing Utensils etc.

Kitchen : Provision for Water Purifier, HOB & Chimney. Provision for Municipal Water (HMWSSB) and underground Water connection. Kitchen Platform with Granite topping, Tiles dado upto 2ft. with Taps & Sink

Bathrooms : Medium size Washbasin of Reputed make, Hot & Cold Diverter Mixer with Overhead Shower of Reputed make, Provision for Geysers in all Bathrooms, Concealed Flush tank with Wall Mounted W.C of Reputed make and Chrome Plated Fittings of Reputed make.

ELECTRICAL

Concealed Copper wiring in Conduits for Lights, Fans, Power Plugs of Reputed make, Power Outlets for Geysers & Exhaust fans, Power Plugs for Cooking range, Chimney, Refrigerator, Mixer / Grinders, Microwave Oven in Kitchen. Washing Machine in utility Area, Plug

Points for TV & Audio System in Living & Bedrooms, 3-Phase Supply for each Apartment & Individual Modular Switches of Reputed make. Miniature Circuit Breakers (MCB) for each Distribution Boards of Reputed make and Power Outlets for Air Conditioners in all Bedrooms.

COMMUNICATION SYSTEM

Providing Telephone Points in Living & TV Points in Living & Master Bedroom. Intercom Facility connecting the Security & Internet Provision in Living room

LIFTS

Passenger Lifts of Reputed make with Rescue Device and V3F for Energy Efficiency of reputed make. Granite / Marble cladding at the Lift Entrances

GENERATOR

D.G Set (Acoustic enclosure & A.M.F panel) power backup for fans and lights, common area, Lifts, Water Motors.

CAR PARKING

Single Car parking spaces for 3BHK & 2BHK.

SECURITY

Solar Power fencing around the Compound Wall. • Surveillance cameras at the Parking & entrance of each block



Location Map

(Not to Scale)



ARUDRA



PUSHYAMI



Punarvasu



vibrant 99665 47998

Project near by

Transportation

- TSPA Circle Orr Exit Tall Booth 4.3 Km
- Mehidi Patnam 8 Km
- Rajiv Gandhi International Airport 18.6 Km

Hospitals

- Cryons Hospital 0.65 Km
- Apollo Hospital, Jubilee Hills 11 Km
- Butterfly Hospital (8km) 7.1 Km

Educational Institutes

- Don Bosco School 1.5 Km
- Pine Grove Junior College (girls) 2.5 Km
- Edify World School 5 Km
- Kendra Vidyalaya 5.6 Km
- K.L. University, Hyderabad 7.7 Km
- Vidya Jyothi Institute Of Technology 9.3 Km
- MGIT 13.6 Km

Leisure&entertainment

- Kalimata Mandir (aramaisamma) 11 Km
- Mrugavani National Park 7.6 Km
- Osman Sagar 13.1Km
- Nazzzzlanda Park 6.8 Km
- M.S Indoor Cricket Academy 3.5 Km
- Charminar 14.5 Km
- IKEA 17 Km



AVANTIKA PROJECTS

#102, 3rd Floor, Avantika Sumukha,
Road No.3/2, Mathrusri Nagar,
Miyapur, Hyderabad - 500049, Telangana.
email: sales@avantikaconstructions.com



WEB SITE

Home Loans Approved By



For Bookings Contact: **9610 222 333**

Note : This folder is purely conceptual and not a legal offer. Area is tentative and actual areas arrived at completion of the flat may differ. The promoters reserve the right to make changes in elevation, plans & specifications as deemed fit.