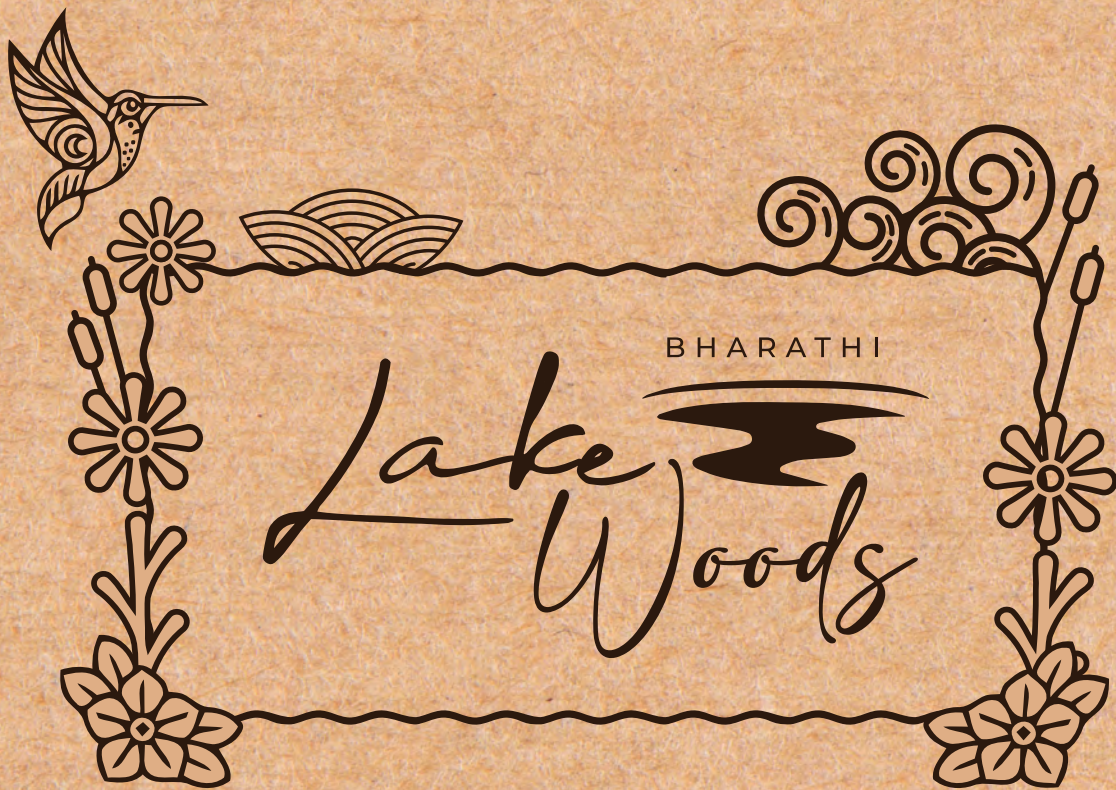


A PROJECT BY

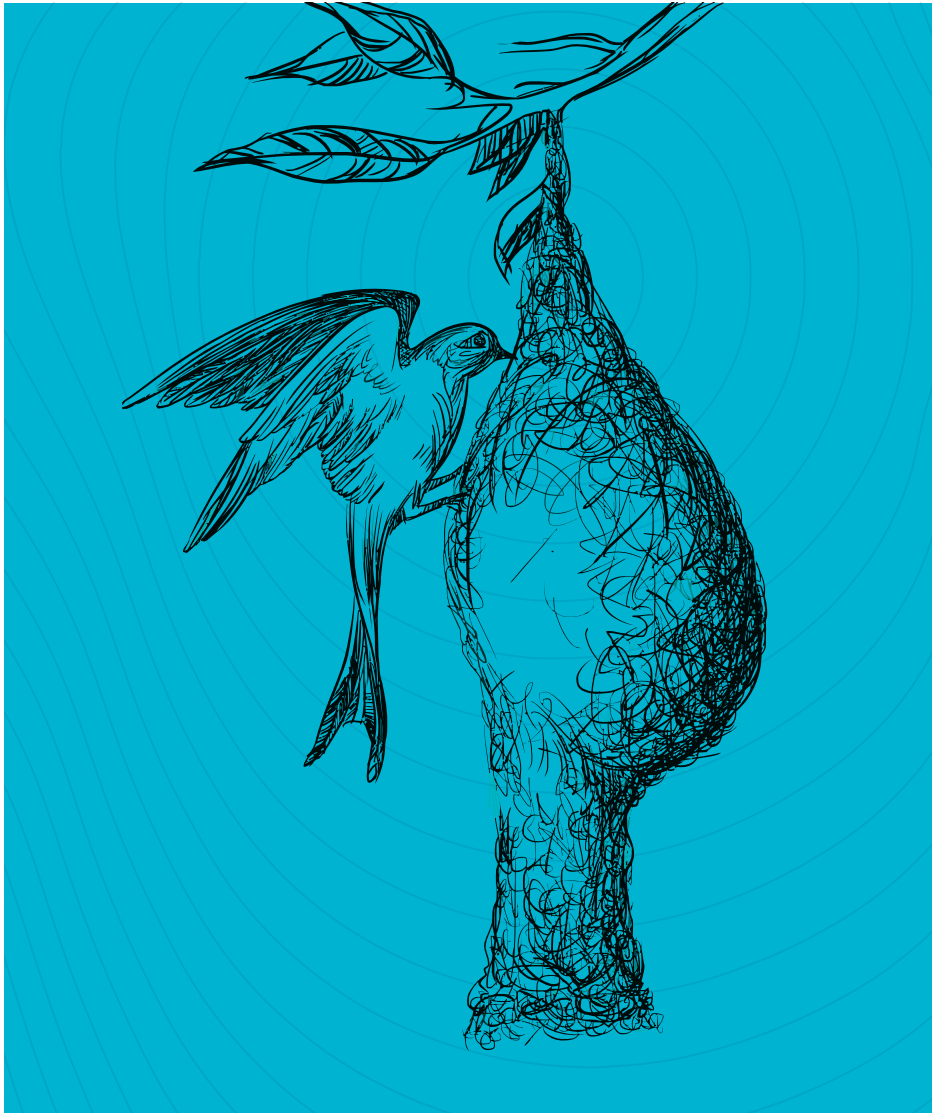


BHARATHI
CONSTRUCTIONS



LIVE YOUR DREAM

3 BHK LUXURY APARTMENTS
@ NCL COLONY, KOMPALLY, SUCHITRA CIRCLE



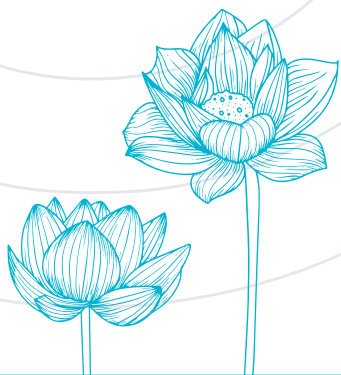
BHARATHI
Lake 
Woods



EXPERIENCE THE

Great Life

AT



BHARATHI
Lake Woods

A PROJECT BY BHARATHI CONSTRUCTIONS



BHARATHI
Lake Woods



BHARATHI
CONSTRUCTIONS



A R A R E

Urban Utopia

Welcome to Lake Woods, a residential apartment of exceptional make located in the bustling yet calm locale of Kompally. It's a home that perfectly brings every essential component of comfortable living together to give you a space where life finds its potential to the fullest.

CRAFTED FOR

Exceptional Living





Every aspect of Lake Woods thoughtfully brings satisfaction and joy to your doorstep. The spacious homes, large balconies and vastu-perfect environment make it the ideal space for your family to grow and thrive in. Step into an abode meant to fit your life in every way possible.

BHARATHI
Lake Woods

A PROJECT BY
BHARATHI CONSTRUCTIONS

TYPICAL FLOOR PLAN

DISCOVER THE BLUEPRINT TO YOUR FUTURE



AREA STATEMENT				
FLAT NO.	01	02	03	04
FACING	EAST	WEST	EAST	WEST
TYPE	3BHK	3BHK	3BHK	3BHK
CARPET AREA (INCLUDING BALCONY & UTILITY)	1674	1680	1963	1981
PLINTH AREA (SFT)	1788	1784	2088	2094
SALEABLE AREA (SFT)	2290	2285	2675	2680



LEGEND

1. Entry/Exit
2. Wooden Deck
3. Seating
4. Children's Play Area
5. Stepping Stones
6. Lawn
7. Half Basketball Court
8. Jogging Track
9. Driveway
10. Screen Wall



3D VIEWS



EAST FACING

2290 SQ.FT.

3 BHK



- 01. Drawing Room | 02. Children Bedroom | 03. Toilet
- 04. Guest Bedroom | 05. Balcony | 06. Utility | 07. Kitchen
- 08. Master Bedroom | 09. Living & Dining Hall

FLAT No.
01

FLAT No.
03

EAST FACING

2675 SQ.FT.

3 BHK



- 01. Drawing Room | 02. Children Bedroom | 03. Toilet
- 04. Guest Bedroom | 05. Balcony | 06. Utility | 07. Kitchen
- 08. Master Bedroom | 09. Dress | 10. Living & Dining Hall

3D VIEWS

A PROJECT BY
BHARATHI CONSTRUCTIONS



WEST FACING

2285 SQ.FT.

3 BHK

FLAT No.
02

01. Drawing Room | 02. Children Bedroom | 03. Toilet
04. Guest Bedroom | 05. Balcony | 06. Utility | 07. Kitchen
08. Master Bedroom | 09. Dress | 10. Living & Dining Hall

FLAT No.
04



WEST FACING

2680 SQ.FT.

3 BHK

01. Drawing Room | 02. Children Bedroom | 03. Toilet | 04. Guest Bedroom
05. Balcony | 06. Utility | 07. Kitchen | 08. Master Bedroom
09. Living & Dining Hall | 10. PUJA | 11. Store | 12. Kitchen Garden



AERIAL VIEW



BHARATHI
CONSTRUCTIONS



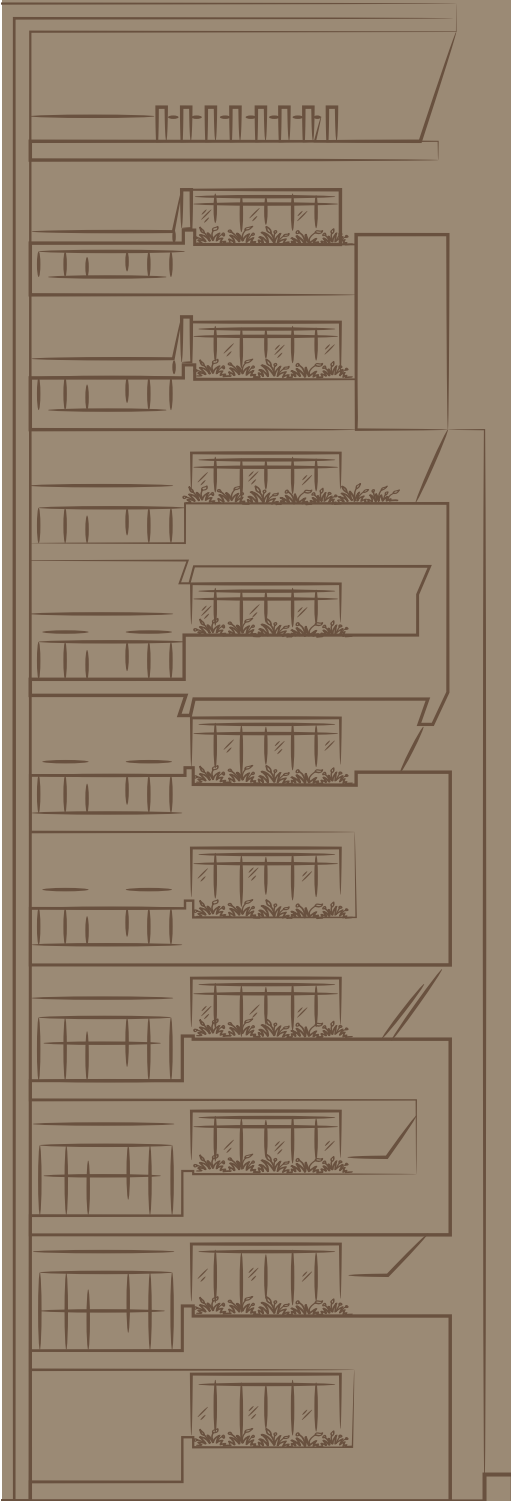
BHARATHI

Lake Woods

Project Overview

Extent	: 2621 sq.yds
Blocks	: 1
Number of Floors	: 8+2
Number of Units	: 40
Type of Flats	: 3 BHK
3 BHK (Sfts)	: 2285-2680

UNLOCK A WORLD OF INDULGENCE THROUGH ABUNDANT AMENITIES.



10th FLOOR

9th FLOOR

8th FLOOR

7th FLOOR

6th FLOOR

5th FLOOR

4th FLOOR

3rd FLOOR

2nd FLOOR

1st FLOOR



ENTRANCE LOBBY

CAR PARKING

C1

C2

A PROJECT BY

BHARATHI CONSTRUCTIONS

Amenities



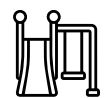
BHARATHI
Lake Woods



100% VAASTU



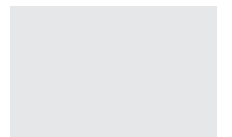
YOGA/MEDITATION/
MULTIPURPOSE
HALL



CHILDREN'S
PLAY AREA

WHERE YOUR LIFE

Becomes a Masterpiece



LIFTS



100%
POWER
BACKUP



CC CAMERAS



AVENUE
PLANTATION



JOGGING
TRACK



CAR
PARKING



INDOOR
GAMES



GYM



A PROJECT BY
BHARATHI CONSTRUCTIONS





STRUCTURE

- R.C.C framed structure to withstand wind & seismic Loads.
- **Superstructure:** 9" thick lightweight red bricks/concrete blocks for external walls & 4" thick lightweight red bricks/concrete blocks for internal walls.
- **Plastering:** External and internal wall cement plaster with smooth finish excluding the plastering of Internal and parking ceiling. Joint of the R.C.C. structure and brick wall will be covered with mesh before commencing of the internal wall plastering.



WALL FINISHES

- **External:** Textured finish with 2 coats of weather proof external emulsion paint of reputed make.
- **Internal:** Smooth putty finish with 2 coats of premium acrylic emulsion paint of a reputed make over a coat of primer.



DOORS & WINDOWS

- **Main Door:** Manufactured teak wood frame & melamine spray finish on veneered flush shutters with hardware of reputed make.
- **Internal Doors:** Engineered/Hardwood frame with PU polish & laminate shutter with hardware of reputed make.
- **Toilet Door:** Same as internal door/granite frame with laminated flush shutter.
- **Sliding Doors:** uPVC/Aluminium door frames with tinted toughened glass panelled sliding shutters with hardware of reputed make.
- **Utility Doors:** Same as internal doors or uPVC door frame of reputed profile sections with combination of tinted float glass & laminated MDF panel.
- **Windows:** uPVC/Aluminium window of reputed profile sections with tinted toughened/HS glass with suitable finishes as per design with mosquito mesh track.
- **Windows Grills:** Aesthetically designed, Mild Steel (M.S) window grills with enamel paint finish.



FLOOR FINISHES & WALL CLADDING

- The drawing, dining, living, bedrooms and kitchen are of minimum 800x800 mm size vitrified tiles of reputed make.
- The balcony, bathrooms and utility areas are of acid resistant, anti-skid vitrified tiles of reputed make.
- The corridor & lift lobbies flooring are with vitrified tiles of reputed make.
- Staircase with natural stone/granite flooring as per architectural design.
- Glazed/matt finish ceramic tiles dado of reputed make up to 2ft height above kitchen platform and upto lintel height in bathrooms and upto 4ft height in utility area.



PLUMBING & CP FITTINGS

- Municipal water supply along with borewells for backup.
- Water gravity supply with pressure booster for the top floors.
- Wall mounted EWC with concealed flush tank/flush valve of reputed make .
- Counter top/under counter Wash basin in all toilets as per architectural design.
- Concealed diverter with spout/ wall mixture along with over head shower of reputed make in all units.
- Premium quality chrome plated taps and health faucets along with White sanitaryware of superior make.
- Provision for geyser in all toilets.
- Treated water made available through an exclusive water softening plant (not RO plant) with water meters to each unit.



ELECTRICAL

- Three phase power supply for all units.
- Concealed copper wiring of premium brands.
- Elegant designer modular switches of a reputed brands.
- Double door DB with spares in each apartment.
- MCB with earth leakage protection of reputed make for all units.
- Power outlets for AC in bedrooms, living and drawing rooms for all units.
- Plug points for TV in drawing, living and master bedroom in all flats.



- Power outlets for geysers & exhaust fans in all bedrooms.
- Power outlets in corridors for cleaning of common areas.
- Separate DG meter to given for each unit and the power usage charges are to be paid.



KITCHEN & UTILITY

- Modular kitchen provisions with water supply and power points for chimney, refrigerator, water purifier, microwave, mixer and grinder.
- Granite platform with stainless steel sink shall be provided with extra cost.
- Water supply in utility along with power supply for washing machine and dryer units.



TELECOM, CABLE TV & INTERNET

- Telephone points in the master bedroom and drawing room.
- Intercom facility to all units connecting security cabin and main gate is provided.
- Provision for DTH with master dish facility provider with TV points in living drawing and master bedroom.
- Wired/Wi-Fi internet facility is provided for all apartments.



SECURITY SERVICES

- Round the clock security system with CCTV surveillance in all important points.
- Biometric access control for maids and staff.
- Panic button & Intercom is provided in the lifts that are connected to security rooms.
- Driveway marking, signage boards at strategic locations for the ease of driving.



ELEVATORS/LIFTS

- High-speed automatic passenger lifts with emergency rescue devices and V3F for energy efficiency of Schindler/Johnson/Kone or equivalent make.
- Granite or marble flooring inside lifts.



EV CHARGING

- EV Charging facility at stilt floor.



LPG SERVICES

- Gas supply system provisions for piped gas systems. (Note: Subject to the availability of service provider)



POWER BACKUP

- Three phase power supply with dual source prepaid energy meter for all units.
- HT power supply along with 100% DG set backup with enclosure and AMF panel for all units and common areas.
- Solar PV system for common area lighting as per statutory norms.



BHARATHI
CONSTRUCTIONS



ELEVATE TO

A PROJECT BY
BHARATHI CONSTRUCTIONS

Lake Woods



BHARATHI

Lake Woods

With a breathtaking lake view to wake up to every day, the convenience of connectivity to the world and the corner homes on offer here, Lake Woods is a place you will love to spend your life in. It's time to own a unique abode that upgrades your life to a better state of being in every way.

Next Level

LOCATION MAP

LOCATION HIGHLIGHTS

CONNECTIVITY

- NH 44
- MMTS Station
- Outer Ring Road
- Secunderabad Railway Station

HOSPITALS

- Russh Hospital
- Renova Hospitals
- Ankura Hospital
- Suraksha Hospital
- Splendid Hospital
- MediCiti Hospital

WORK

- New IT Hub Coming Up In Kandlakoya
- Jeedimetla Industrial Estate
- Mahindra Satyam Training & Development Centre
- Biotech Park
- Kandlakoya Industrial Area
- ICICI Knowledge Park
- Seeds & Pharma Companies

EDUCATION

- DRS International School
- St. Martin's Engineering College
- Siva Sivani Degree College
- St. Ann's High School
- Malla Reddy University
- Suchitra Academy
- CMR Engineering College
- Niraj International School
- Loyola Academy
- Oakridge International School

LEISURE

- Leonia Resort
- Aalankrita Resorts
- Dhola-Ri-Dhani
- Haldi Golf County
- Aranya Resort
- Cine-Planet
- Kandlakoya Oxygen Park
- Heart Cup Coffee
- Cinopolis
- Secunderabad Club

SOCIAL

Supermarkets Nearby - Ratnadeep, Metro, D-Mart
Banks Nearby - SBI, ICICI, HDFC, Kotak, Axis etc.,
Shopping Nearby - Decathlon, Pantaloons, Lifestyle, Shoppers Stop etc.,

OUR PARTNERS

ARCHITECT



www.designspace.in

MEP CONSULTANT



www.esvedesigns.com

LANDSCAPE ARCHITECT



STRUCTURAL ENGINEER

K. NARENDER

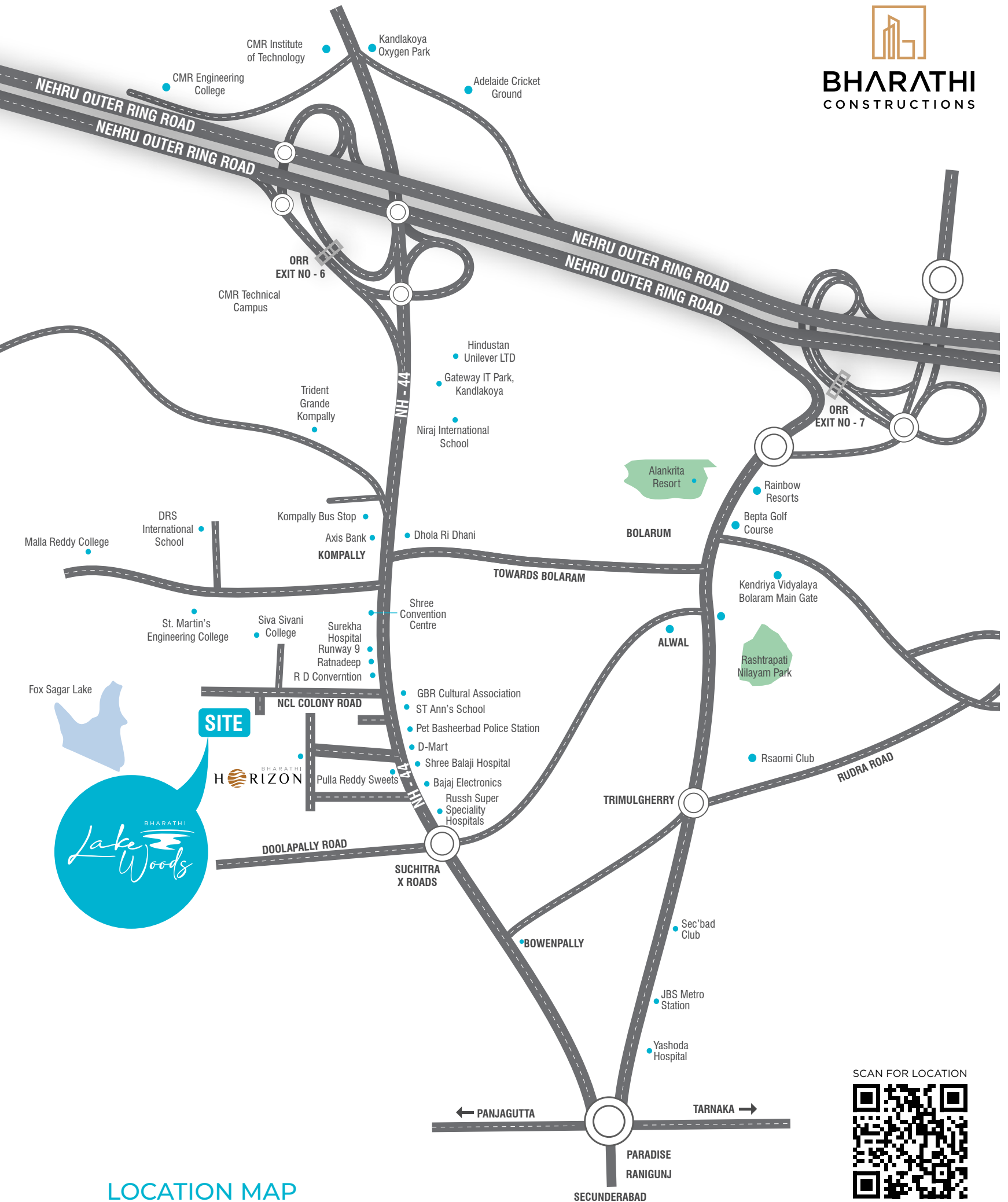
BRANDING PARTNER



outlinemedia.in



BHARATHI
CONSTRUCTIONS



LOCATION MAP
(Not to Scale)

Note : This brochure is purely conceptual and not a legal offer. Area is tentative and actual areas arrived at completion of the flat may differ. The promoters reserve the right to make changes in elevation, plans & specifications as deemed fit.

www.bharathiconstructionshyd.com



BHARATHI
CONSTRUCTIONS

#2301, Plot No.: 51 & 52, Delight Square
3rd floor, Green Park Avenue, Suchitra 'X' Roads,
Hyderabad-500067, Telangana.

SITE ADDRESS:

Sy no 106, NCL, Kompally, Dundigal Gandimaisamma Mandal, Medchal
Malkajgiri District, Telangana 500100.

Follow Us: [f](#) [t](#) [in](#) [@](#)//bharathiconstructionshyd
E-mail: bharathiconstructionshyd@gmail.com

Member of
CREDAI

APPROVED
hmda
Growing Global

ITS RERA
TELANGANA STATE REAL ESTATE REGULATORY AUTHORITY
RERA No: P02200006662

Branding Partner
outlinemedia.in |