

A project by
Confident Builders



Confident Builders

Flat No.102, Grecious Homes, Plot No.147 & 148,
Mythrinagar, Hyderabad, Telangana, India.

Email: confidentbuilders99@gmail.com

M: +91 9100 0071 94/95

TS RERA NO: **PO2400007157**

www.confidentbuilders.com

Branding Partner
outlinemedia.in | 86860 86876

3 BHK PREMIUM APARTMENTS
@ PETBASHEERABAD, NEAR SUCHITRA CIRCLE

EVERY SPACE
TELLS YOU
A STORY OF
EXCELLENCE



Confident Builders

For 15 years, Confident Builders has passionately transformed dreams into tangible spaces, embodying quality and trust. As leading developers in Hyderabad, we specialize in crafting affordable yet opulent residential and commercial properties with modern amenities. Our creations are nestled in secure environments, bearing witness to our legacy of transparency and unwavering integrity.



STRONG BONDS, ENDLESS MEMORIES

Confident Ridge represents the pinnacle of excellence, brought to you by a company committed to achieving perfection. Fueled by a fervent desire to craft a fresh experience for the city's elite, Confident Ridge unveils a comprehensive premium gated community, boasting xxxx exquisite blocks set amidst xxxx acres of enchanting landscaped beauty. Nestled in the forward-looking enclave of Chandanagar, Confident Ridge invites you to claim a piece of this future-ready world as your own.



A project by
Confident Builders



ELEVATING URBAN
LIVING TO PERFECTION



A project by
Confident Builders

PROJECT OVERVIEW

1	Block
10	Floors + Cellar 2 Podium Floors 2 & 3 BHK Apts
154	Units
6263	Sq.Yds
50,000	sft Clubhouse

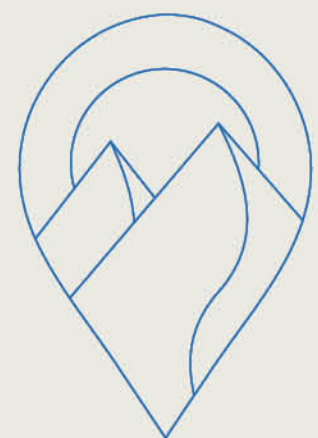
ENFOLD A LIFE OF CONTRAST IN OUR WELL-CRAFTED HABITAT

Welcome to a realm of opulence and grandeur. Our project, nestled in the heart of Chandanagar near Miyapur, beckons with a lavish entrance arch, setting the tone for an extraordinary living experience. Step into a world where luxury meets convenience, where every detail speaks of elegance and comfort. Embrace a life of distinction at our exquisite address.

LUXE LIVING RIGHT AT YOUR DOORSTEP



P A S T I N G



LUXURY IS NOT JUST A FEATURE AT CONFIDENT RIDGE

PROJECT HIGHLIGHTS

Our apartments are adorned with an array of luxury amenities, meticulously curated to elevate your lifestyle. From a state-of-the-art fitness center to a tranquil spa retreat, every corner of this residence is designed to cater to your desires. Dive into the refreshing embrace of the infinity pool, or unwind in the elegantly appointed lounge areas. Immerse yourself in the pleasures of a private cinema or refine your culinary skills in the gourmet kitchen. With valet service, concierge assistance, and secure parking, every need is anticipated and met.

- Vitrified Tiles In Living, Dining, All Bedrooms And Kitchen, Anti-skid Ceramic Tiles For All.
- Balconies, Utilities And Bathrooms Premium Quality Fittings And Fixtures For The Bathrooms.
- Air Conditioning Points In Living/Dining Room And All Bedrooms.



A project by
Confident Builders

CHARTING THE COURSE FOR AN EXTRAORDINARY LIFESTYLE

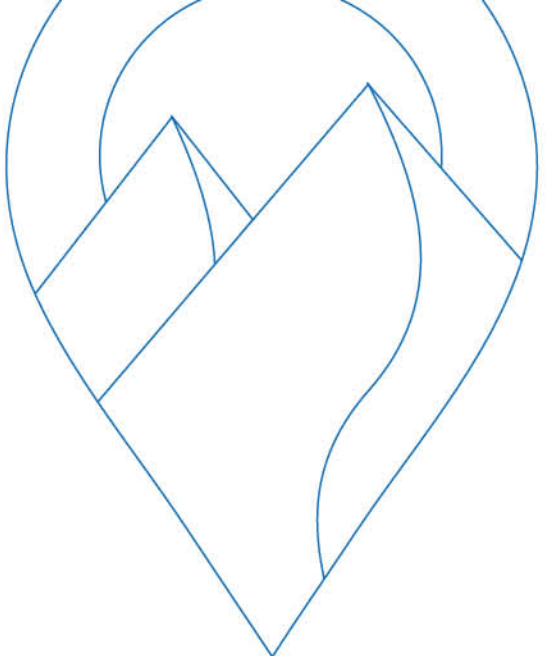
A project by
Confident Builders



LEGEND

1. Entry / Exit
2. Entrance Plaza
3. Party Lawn
4. Children's Play Area
5. Multi Use Play Court
6. Senior Citizen Area with Gazebo
7. Cricket Pitch
8. Lawn with Gazebo
9. Toddler Play Area
10. Jogging Track
11. Driveway Floor Pattern

MASTER PLAN



TYPICAL FLOOR PLAN



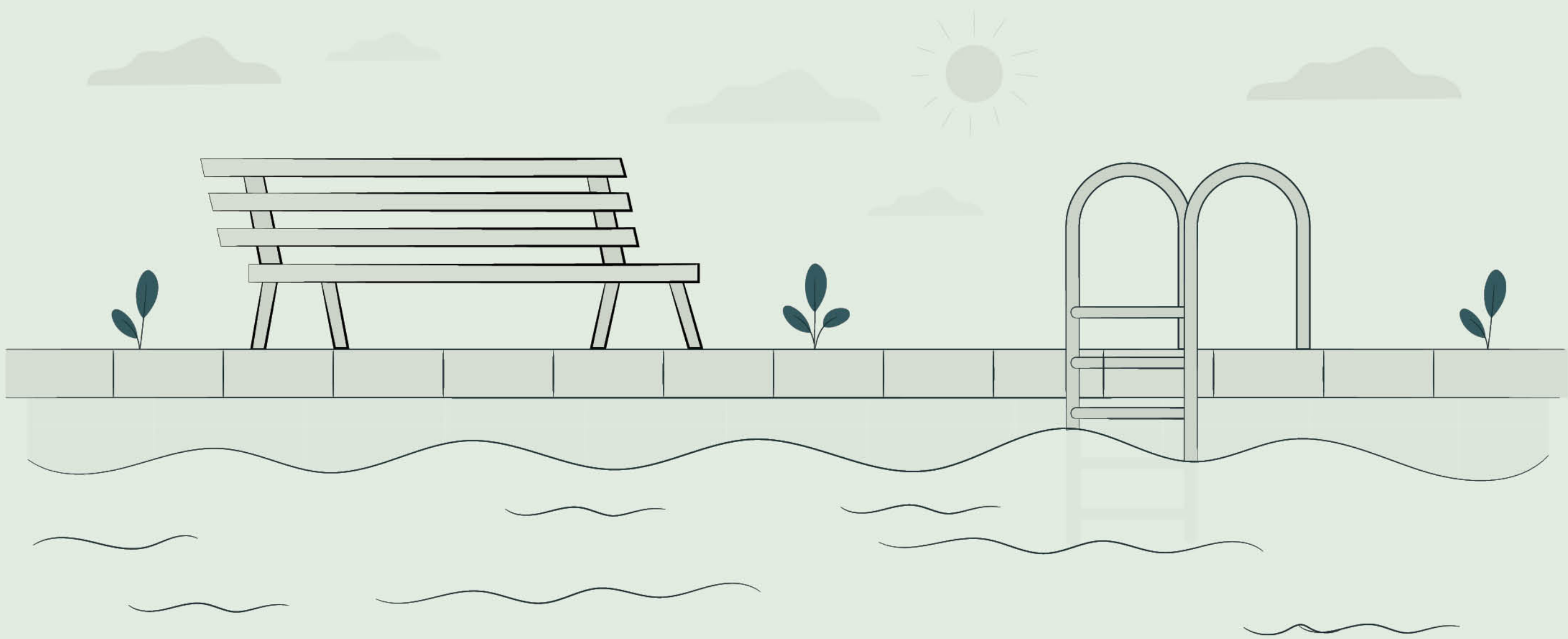
MAPPING YOUR FUTURE HOME



A project by
Confident Builders



EMBRACING NATURE, ELEVATING AMENITIES



Bright and
Breezy



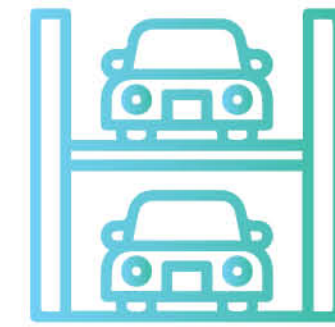
Active and
Athletic



Soothing and
Serene



Ample and
Rolling



Confident Ridge is more than a community; it's a sanctuary where nature and luxury harmoniously coexist. Nestled amidst lush greenery, this haven invites you to immerse yourself in the soothing embrace of the natural world. Beyond the verdant landscapes, we've curated a collection of amenities that redefine opulence.

CLUB POOL

THE PINNACLE OF
POOLSIDE PERFECTION





JOGGING TRACK



TENNIS COURT



KIDS PLAY ZONE



OUTDOOR GYM



CONFIDENT
RIDGE
AMENITIES



Banquet Hall



Badminton Court



Table Tennis



Billiards



Hobby Room



Squash Court



Creche



Society Office



Library



Terrace Landscape



Dance Room




Music Room



A project by
Confident Builders



LIVING NATURALLY,
THRIVING DAILY



Embrace a lifestyle rooted in nature, where everyday living is a flourishing experience. Our community is designed to seamlessly blend with the natural surroundings, providing a sanctuary for both mind and body. From lush green spaces to thoughtfully curated amenities, every aspect is dedicated to enhancing your well-being.



SEATING AREA



DRIVE WAY

SPECIFICATIONS

FOUNDATION: RCC Structure to with stand wind & Seismic loads.

SUPER STRUCTURE: 9" thick cement solid brick blocks for external walls & 4½" thick concrete blocks for internal walls.

PLASTERING: External and Internal walls double coat cement plaster with smooth finish.

DOORS

Main Door: Engineered wood/Teak wood frame & teak veneered shutter, aesthetically designed and finished with melamine polish and fixed with hardware of reputed brand.

Internal Doors: Engineered wood/Teak wood frame & flush shutters, aesthetically designed and fixed with hardware of reputed brand.

French Doors: uPVC/High-end door frames with glass paneled sliding shutters and with extra track provision for mosquito mesh.

Windows: uPVC/High-end window system with glass and with mosquito mesh. Aesthetically designed, Mild steel (MS) grills.

PAINTING/CLADDING

External: Textured finish and two coats of exterior emulsion paint, over a coat of primer of reputed brand.

Internal: Smooth finish with two coats of putty, two coats of acrylic emulsion paint, over a coat of primer of reputed brand.

FLOORING

Living, Drawing & Dining: 800x800mm size double charged vitrified tiles of Kajaria/Rak or equivalent.

Bedroom: Kajaria/Rak or equivalent wooden color flooring tiles.

Kitchen: Cladding upto 2' height above the platform with wall tiles of reputed make.

Utility: 2'X2' rustic-finish premium vitrified tiles of reputed make.

Balcony & Sit-out area: 2'X2' rustic-finish premium vitrified tiles of reputed make.

Bathrooms: Acid resistant, anti-skid ceramic tiles of reputed make.

Corridors: Pre-polished granite flooring.

Staircase : Granite/Natural Stone.

TILE CLADDING

Bathrooms: Up to 7' door height with premium digital printed ceramic tiles Kajaria/Rak or equivalent brand Utilities area : Up to 3' height with ceramic tiles of reputed make.

KITCHEN

• Individual Tap for cooking, washing and other purpose.

• Separate Municipal Water tap for drinking water.

• Provision for Dish washer & washing Machine in the Utility area.

• Piped Gas with prepaid meters.

BATHROOMS

• Washbasin of premium brands like Roca/Kohler/Toto Queo or equivalent brand.

• Wall hung EWC of Kohler/Roca/Duravit/Toto.

• Concealed flush tank or flush realer. Single lever diverter of Kohler/Jaquar/Queo/Toto or equivalent make for mixing of hot and cold water.

• Provision for geysers in all bathrooms.

• All CP fittings are chrome plated of Kohler/Jaquar/Queo/Toto or equivalent make.

ELECTRICAL

• Concealed copper wiring of Havells/Finolex/RR Kabel/Polycab or equivalent make.

• Power outlets for geysers in all bathrooms. Power plug cooking range, chimney, refrigerator, microwave ovens, mixer/grinders in kitchen, washing machine & dish washer in utility area.

• Plug points for TV with data cable in all bedrooms and living room.

• 3-Phase power supply for each unit with prepaid meters.

• Miniature Circuit Breakers (MCB) for each distribution boards of Legrand/Havells/Schneider or equivalent make.

• Elegant designer modular electrical switches of Legrand/Havells/Schneider or equivalent make.

CABLE TV

Provision for cable connection in master bedroom & living room in each apartment.

INTERNET

Internet wiring provision in dining and master bedroom.

WTP & STP

• Domestic use water is made available through an exclusive water softening plant (Not RO plant).

• Municipal Water and bore-well Water will be supplied to the kitchen by separate lines. A sewage treatment plant of requisite capacity will be installed as per norms inside the project premises and the treated water will be used for the landscaping & flushing purposes.

POWER BACKUP

• 1KVA power backup for each flat.

• Facility for lights and common areas Generator of AMF., Kirloskar Cummins or equivalent make provided.

SECURITY/BMS

• Sophisticated round-the-clock security / surveillance systems.

• Solar power fencing all-round the compound wall and security screening of visitors.

• Surveillance corners at the main security and entrance of each block to monitor. Reticulated gas supply to every units kitchen connected to the control manifold.

CENTRALIZED WATER SUPPLY

• A centralized underground sump will be provided for the entire community. Water supply to every unit by hydro-pneumatic pressurized system.

MAIN LANDSCAPING WORKS

Beautiful and utility designed landscaping with footpath, designed activity areas, sitting areas, lighting, children's play area etc., provided for the community.

LIFTS

8 passengers lift shall be provided of KONE/JOHNSONS/OTIS or equivalent make (SS cabin and automatic doors).

PARKING MANAGEMENT

Entire parking is well designed to accommodate all the unit's cars. separate entrance, exit, parking signage, driveways, equipment etc., are installed to case parking and departures.

FIRE SAFETY

Fire hydrant and fire sprinkler system in all floors and basements as per government norms being provided. Fire alarms and Public address system in all floors and parking areas (basements) will be installed with control panels at the Main security rooms.

CONNECTIVITY

IT HUBS

Hitec City	15 Mins
Raheja IT Park	20 Mins
Gachibowli	25 Mins
Financial District	30 Mins

NEARBY

DMart	2 Mins
Miyapur Cross Roads	2 Mins
Miyapur Metro Station	5 Mins
Lingampally Railway Station	15 Mins
ORR	20 Mins

EDUCATIONAL INSTITUTIONS

Gokaraju Ranga Raju College	5 Mins
Kennedy Global School	10 Mins
Silver Oaks Int. School	10 Mins
Mamata Medical College	10 Mins
Creek Int. School	15 Mins
Oakridge	20 Mins
Delhi Public School	20 Mins

HOSPITALS

Srikara Hospital	5 Mins
Mamata Hospitals	10 Mins
SLG Hospital	10 Mins
KIMS	10 Mins
Rainbow Children's Hospital	15 Mins

SHOPPING MALLS

GSM Mall	10 Mins
Manjeera Mall	15 Mins
Nexus Mall	16 Mins
AMB Mall	20 Mins
IKEA	20 Mins

HOSPITALS

Srikara Hospital	5 Mins
Mamata Hospitals	10 Mins
SLG Hospital	10 Mins
KIMS	10 Mins
Rainbow Children's Hospital	15 Mins

OUR PARTNERS

ARCHITECTS

DESIGNSPACE
ARCHITECTS

www.designspace.in

MEP CONSULTANTS



ESVE

www.esvedesigns.com

LANDSCAPE



STRUCTURAL ENGINEER

K. NARENDER

MEDIA PARTNER

OUTLINE
MEDIA
outlinemedia.in

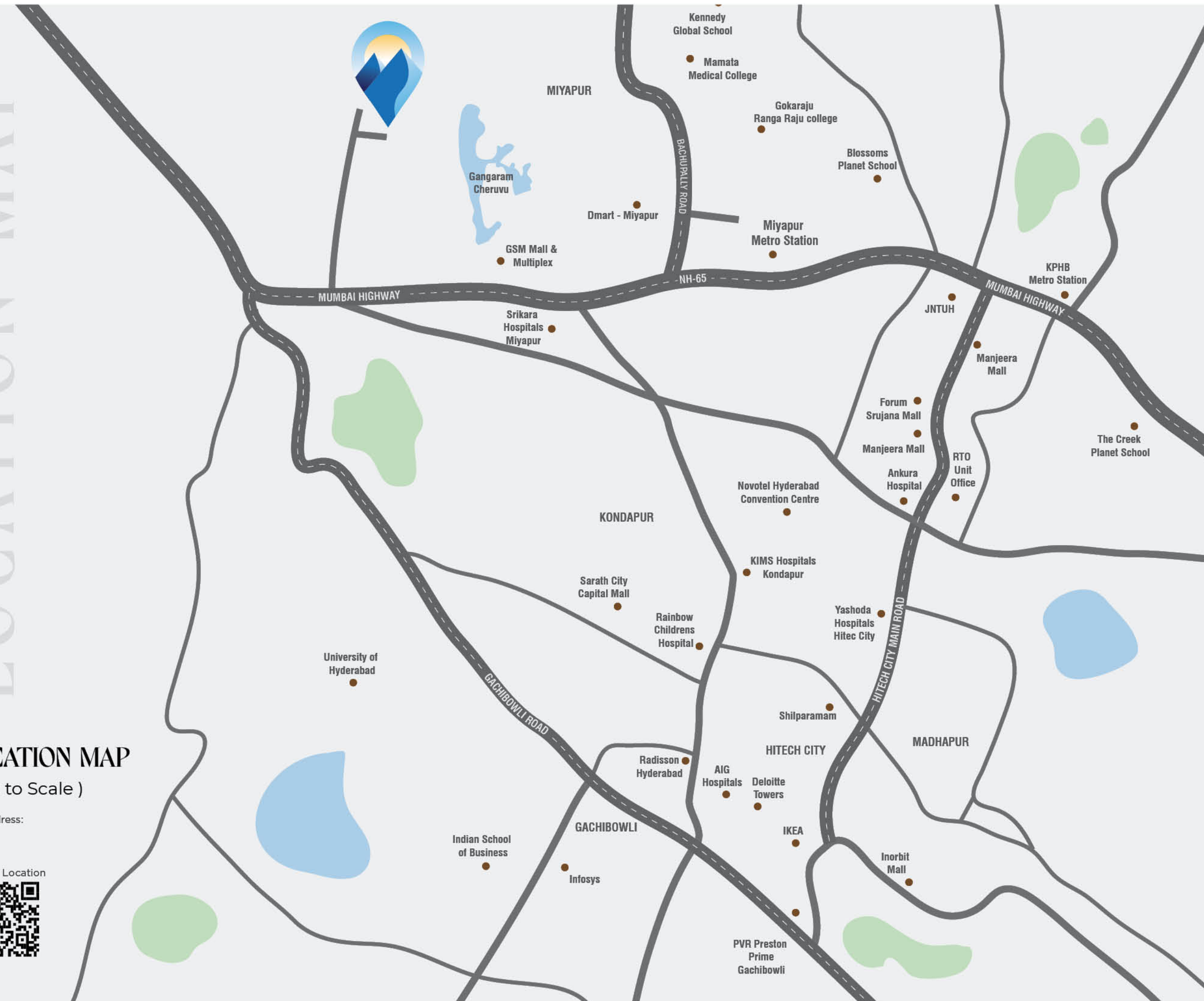
LOCATION MAP

LOCATION MAP

(Not to Scale)

Site Address:

Scan for Location





ONGOING PROJECT

2 | **3** | **207**
Acres | Blocks | Independent Houses

C+S+9 | **8500** -sft | **20**
Storey Towers | Clubhouse | Amenities

Ample | **More** | **24/7**
Car Parking | Open Space | Security



ONGOING PROJECT

8 | **8** | **2&3**
Acres | Blocks | Premium Residences

2B+G+12 | **40000** -sft
Floors | Clubhouse

65% | **40**
Open Space | Amenities



ONGOING PROJECT

2 | **3** | **207**
Acres | Blocks | Independent Houses

C+S+9 | **8500** -sft | **20**
Storey Towers | Clubhouse | Amenities

Ample | **More** | **24/7**
Car Parking | Open Space | Security