

11
Eleven

11
Eleven

We put the *Extra* in *Extraordinary!*





Welcome to Eleven11

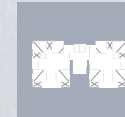
Welcome to Eleven11, we put the 'Extra' in 'Extraordinary' and we are one of Baroda's premier new-generation real estate projects. With a blend of expertise and experience at the very core of our foundation and a young & dynamic team which has more than a decade of experience in the Real Estate industry, We bring to the table, the perfect confluence of experience and technology. You have a project that willingly and gladly walks that extra mile for you, so that the divinity in the universe comes together to make your family's dreams come true.

With the idea of providing you your dream place, here we introduce, Eleven11. It's a place that oozes peace, serenity and tranquility and foster love and care. We are unconventionally conventional. We go the 'extra foot' to provide you with a mile of extra comfort. There is that extra height and width to your abode that translates into more space for your family. We have the mantra of Eleven11.





Know your *Campus*



Each floor has **only two flats**; a luxury in these times.



The ride from the bottom to the top just got faster, with **elevators** that take you from the **basement to the terrace**.



Getting stuck in the elevators is now a thing of the past. Eleven11 premise is well-equipped with **power backup** generation facilities for the elevators.



No more queues or overcrowding in the elevators, because each tower is well-equipped with two elevators.



Your flat is unique and special for you. Each flat has **designer nameplates** made with your name and the **flat no. plate**. Distinguishable and unique, for you!



Music system in the campus is all a music lover yearn for. Soft music playing in the background with a beautiful ambience turns your dwelling satisfying.



Power backup is pre-installed in the parking and corridors of each floor of all the towers.



Nestled in the lap of nature, our campus is a **lush, green carpet** of fresh grass, which provides natural coolness.

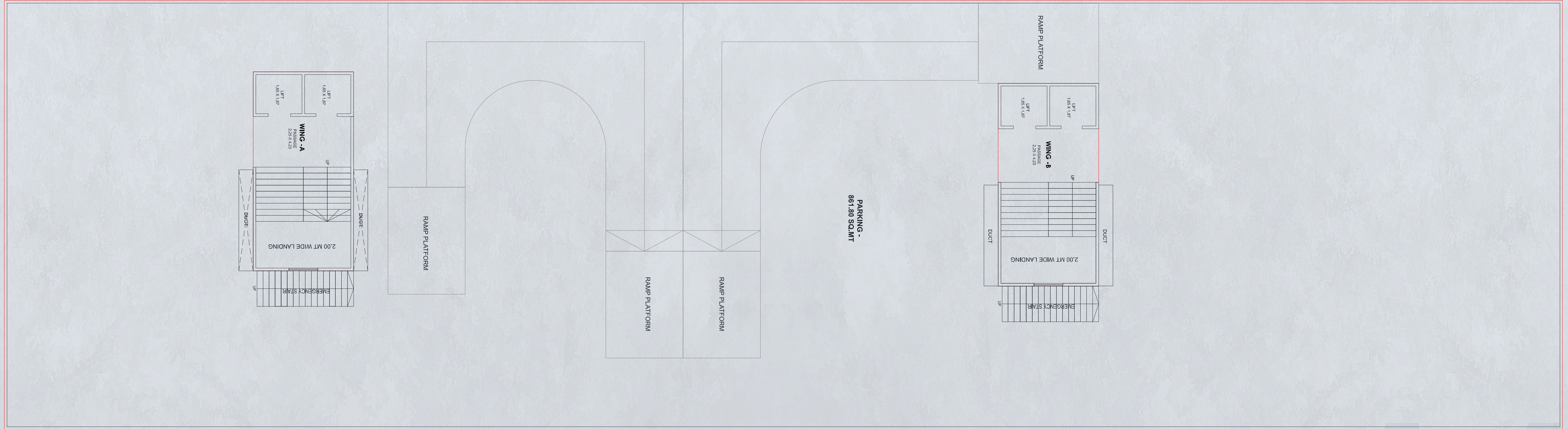


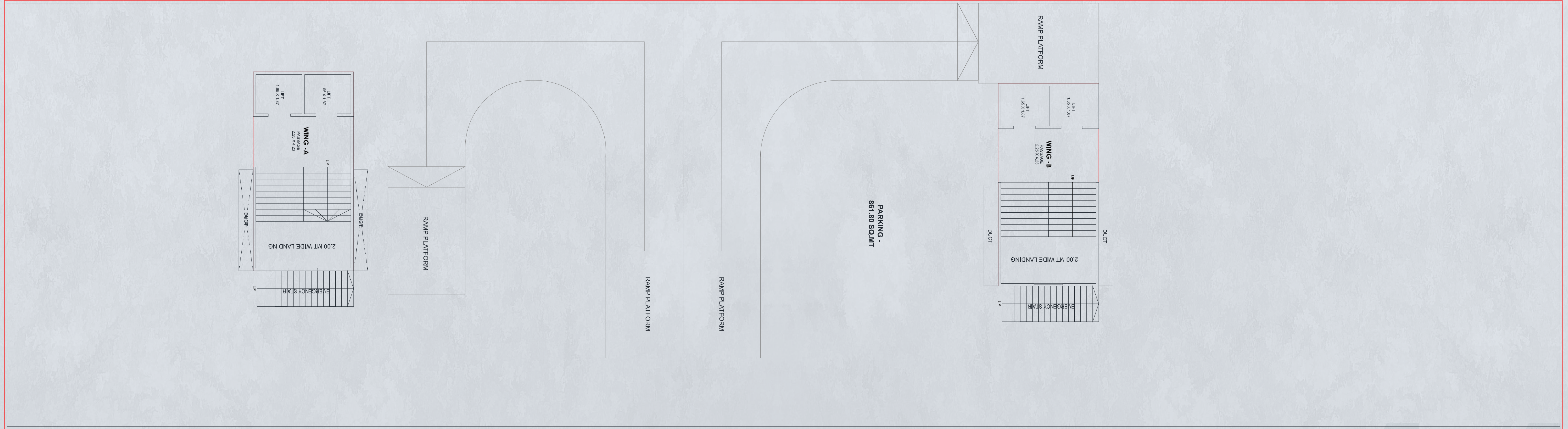
We care about the environment and are environmental conscious. Everyone will have **EV charging point** at Parking Space which will be common for all.

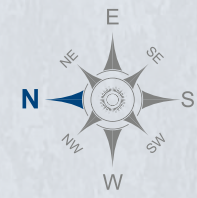


Entering your Eleven11 Building is nothing short of entering your palace, because it is auspicious for everyone.









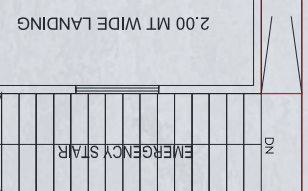
18.00 M t. Wide Road

TRANSFORMER

PARKING -A
102.54 SQ.MT

3.00 MT WIDE PASSAGE

WING -A
2.13 X 4.05



2.00 MT WIDE LANDING

EMERGENCY STAIR

PARKING -B
120.55 SQ.MT

RAMP GROUND
TO BASEMENT (R1)
= (1:7) 2.80 X 7 = 19.60 MT LENGTH

RAMP PLATFORM

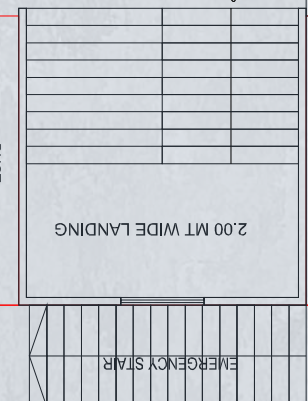
RAMP GROUND
TO BASEMENT (R2)
= (1:7) 2.80 X 7 = 19.60 MT LENGTH

RAMP PLATFORM

PARKING -C
79.68 SQ.MT

3.00 MT WIDE PASSAGE

WING -B
2.13 X 4.05



2.00 MT WIDE LANDING

EMERGENCY STAIR

PARKING -D
108.61 SQ.MT

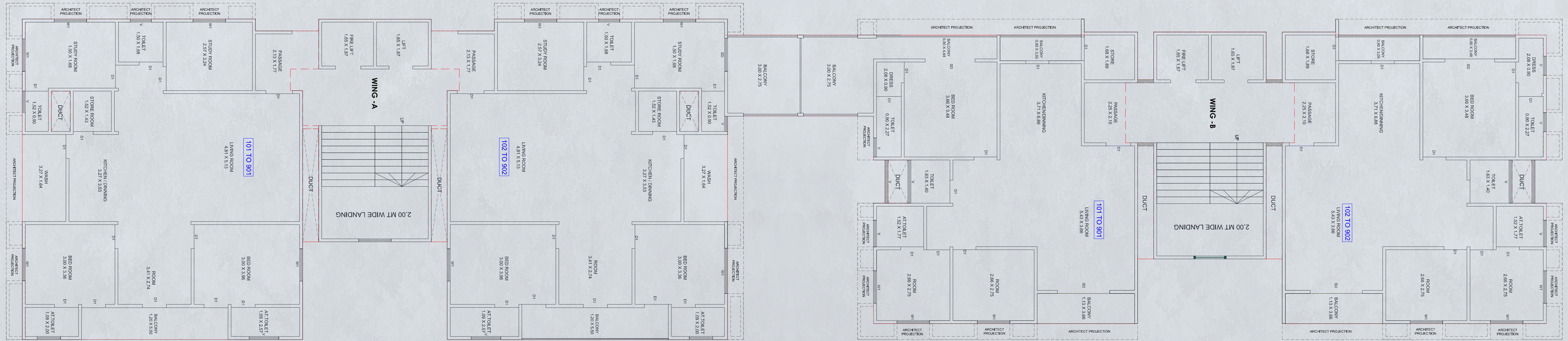
6.00 MT INTERNAL APPROACH

6.00 MT INTERNAL APPROACH

COMMON PLOT
200.82 SQ.MT



Typical 1st to 9th Floor





Know your *Flats*



We help to bring divinity to your abode with the perfect alignment as per **Vastu**.



Always feel safe about your family's security, when you have the **best-in-class cutting-edge Security Technology** to keep your home safe.



With the pre-provided **AC ducting** and fittings, there is no need to drill holes in the decorated and painted walls.



We have each apartment planned in a way to provide you **excellent ventilation** on each side of your home.



No more damage to goods and appliances when trying to get them in through the door, because your flat comes with **door frames** which are **one foot more** than what others provide.



No Common Walls adds up to Better Privacy. Live a lavish life in your **4 side open flats**



With each flat having **11 feet in height**, your abode can be nothing short of a mansion.



Imagine waking up to the sun shining through a **5 feet tall 'French' Window**, amidst the chirping of birds. Flats at Eleven11 come with this luxury.



Want to have a small and private gathering at home? Make use of the **extra-wide balcony** that each flat has, making it spacious.



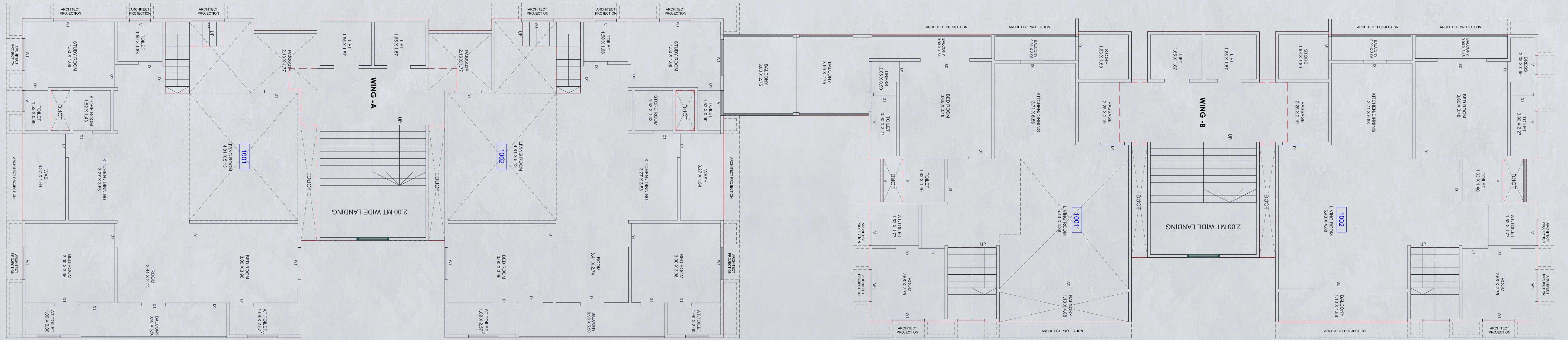
You don't need to play the 'Knock-Knock. Who's there?' game, because you can see who is at the door, through the already provided **door-video system**.



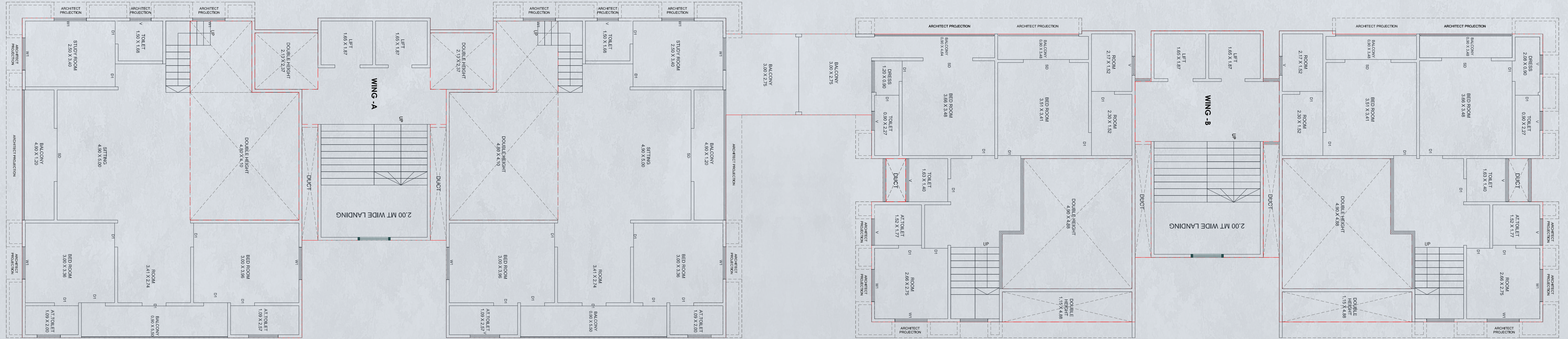
Having a luxurious car is a luxury, and assuring its security is part and parcel of what comes with your home. Park your cars in ample, **secure parking**, which is available as per various flat variations.



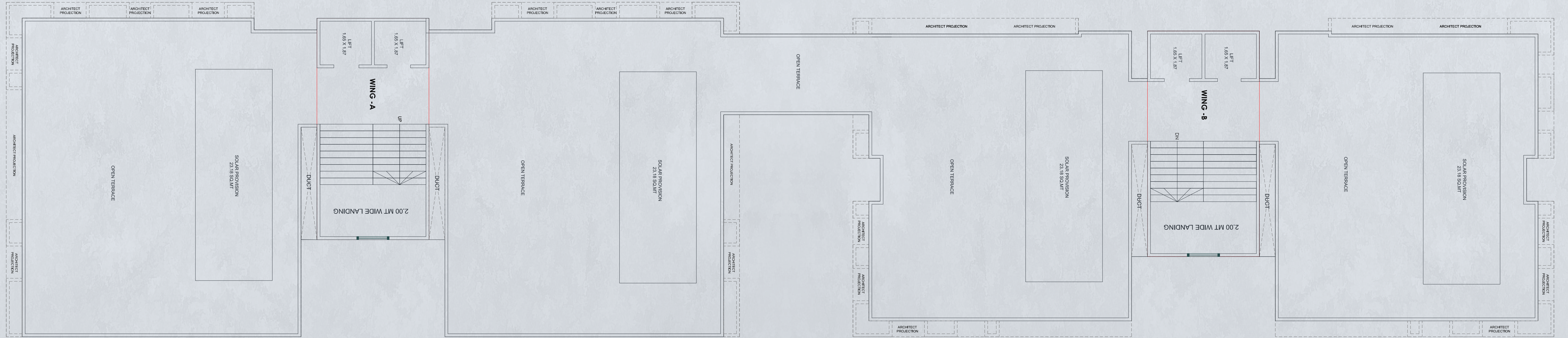
Lower Level 10th Floor



Upper Level 11th Floor



Terrace Floor





Know your Specifications



Structure

Earthquake Resistant RCC Frame Structure. High-Quality Brick Masonry Work with Plaster as per Architects' Design. Compound Wall Around the Entire Campus.



Flooring

Premium Flooring in Living Area, Kitchen, Dining & Foyer. Double Charged 800*800mm / 600*1200 Vitrified Tiles in Remaining Rooms.



Toilets

Designer Ceramic Tiles in All Bathrooms up to Lintel Level. Natural / Artificial Premium Stone Counter for Basins.



Kitchen

Natural / Artificial Premium Stone Platform with Quartz / S.S Sink. Designer Ceramic Tiles DADO Above Kitchen Platform up to 4ft.



Sanitary & Fixtures

Kohler / Roca / Grohe / Hansgrohe or Equivalent Make CP Fittings & Sanitaryware.



Air Conditioning

Copper Piping done from Indoor Units to Outdoor Units for each AC Point.



Doors

Main Door: High Quality Wooden Frame Door with Veneer Paneling. Internal Doors: Stone Frame with Veneer / Laminated Flush Doors. High Quality Powder Coated Heavy Aluminium Section or UPVC with DGU Glass



Windows

Aluminium Windows with Powder-Coated Paint with Safety Grills.



Paints & Finish

Internal walls treated with birla putty. Exterior Double coat plaster with Acrylic based paint. Oil Paints on all grills and railings.



Electrification

Electrification Concealed ISI Mark Copper Wiring with Suitable MCBs, Banded quality modular switches and Provision for Telephone, TV Cable, Internet, Inverter Ready Wiring, AC point etc. ELCB and Individual 3 Phase Meter will be Provided for Each Flat.



Plumbing & Water Supply

Concealed Internal Hot & Cold Plumbing with premium quality pipe (Noise-less). Underground and overhead tank 24 hours water supply.



11 Eleven

Developer
Eleven Eleven Space Infra

Site address :
Eleven Eleven, Bh Vihav Trade Centre,
Bhayli TP 3, Vadodara.

Contact Details
Call : **+91 9714 1111 57**
Email : **11eleven@urbanaqgroup.com**
Website : **www.urbanaqgroup.com**

Architect :
Karman
Architects

Structure :
ZARNA
ASSOCIATES