

Site:
Florenca, Beside TURF 106,
Bh. VCA Cricket Ground,
30 Mtr. Priya Cinema Road,
Sevasi TP-2, Sevasi, Vadodara.

CALL:
787 444 5252

Email: florenca.52@yahoo.com
Website: www.riddhisiddhigroup.in



LOCATION

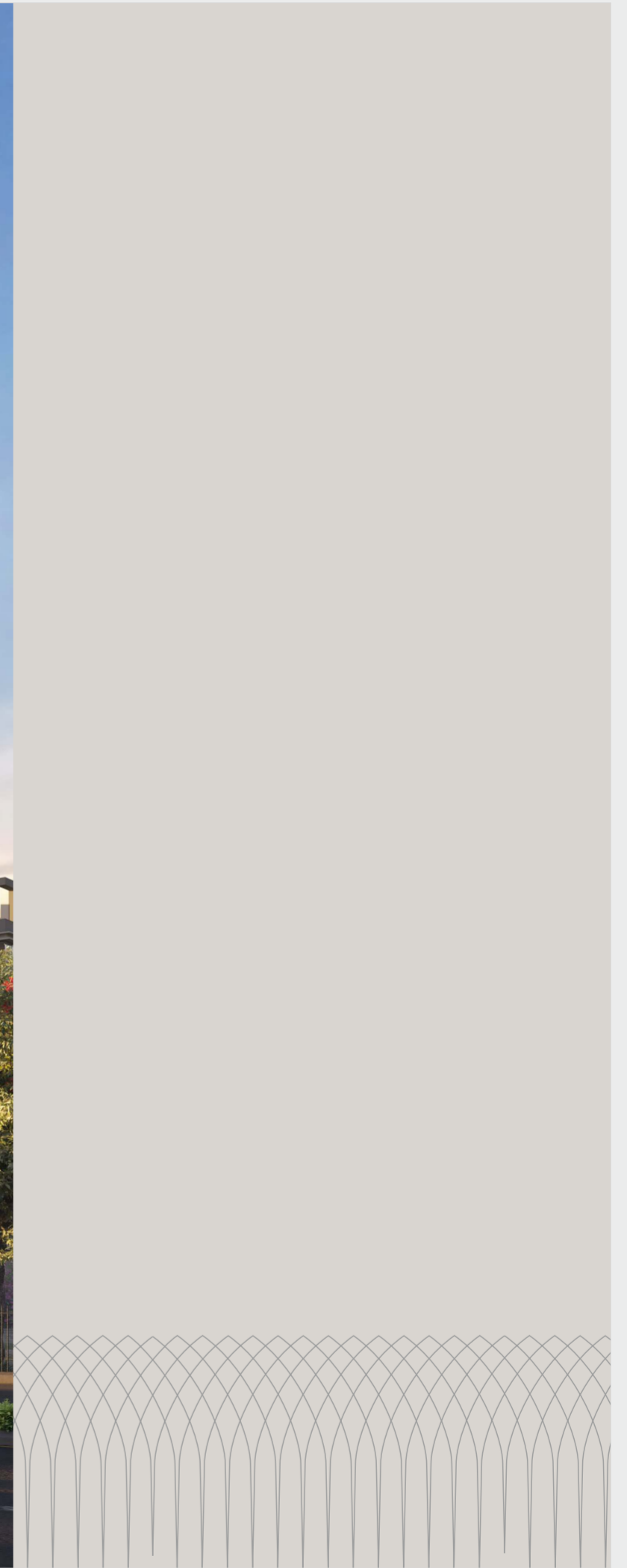
FL  **RENCIA**
4 BHK LUXURIOUS DUPLEX APARTMENT

HONEST CR. 98243 85808



2

3





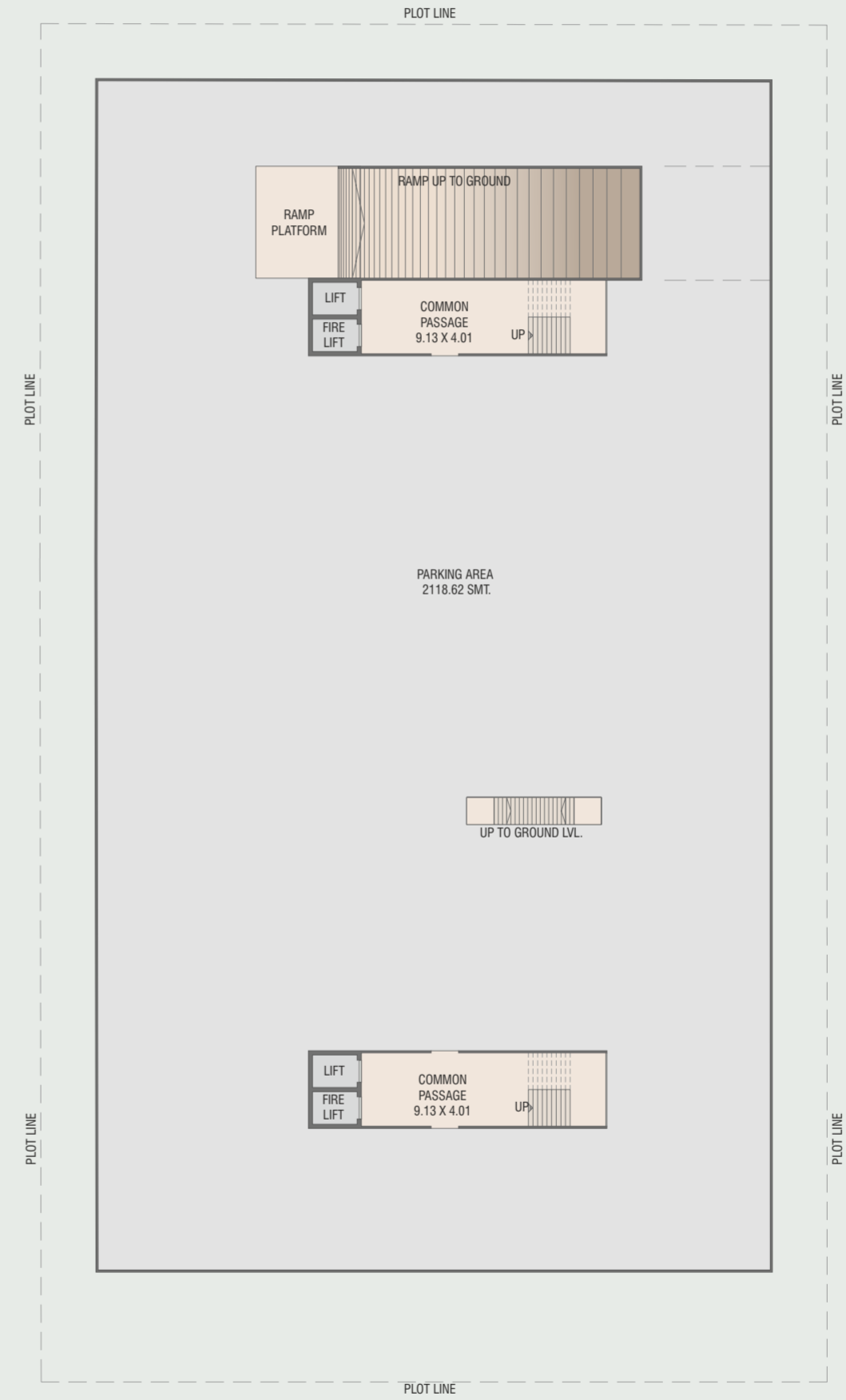
LAYOUT PLAN



4

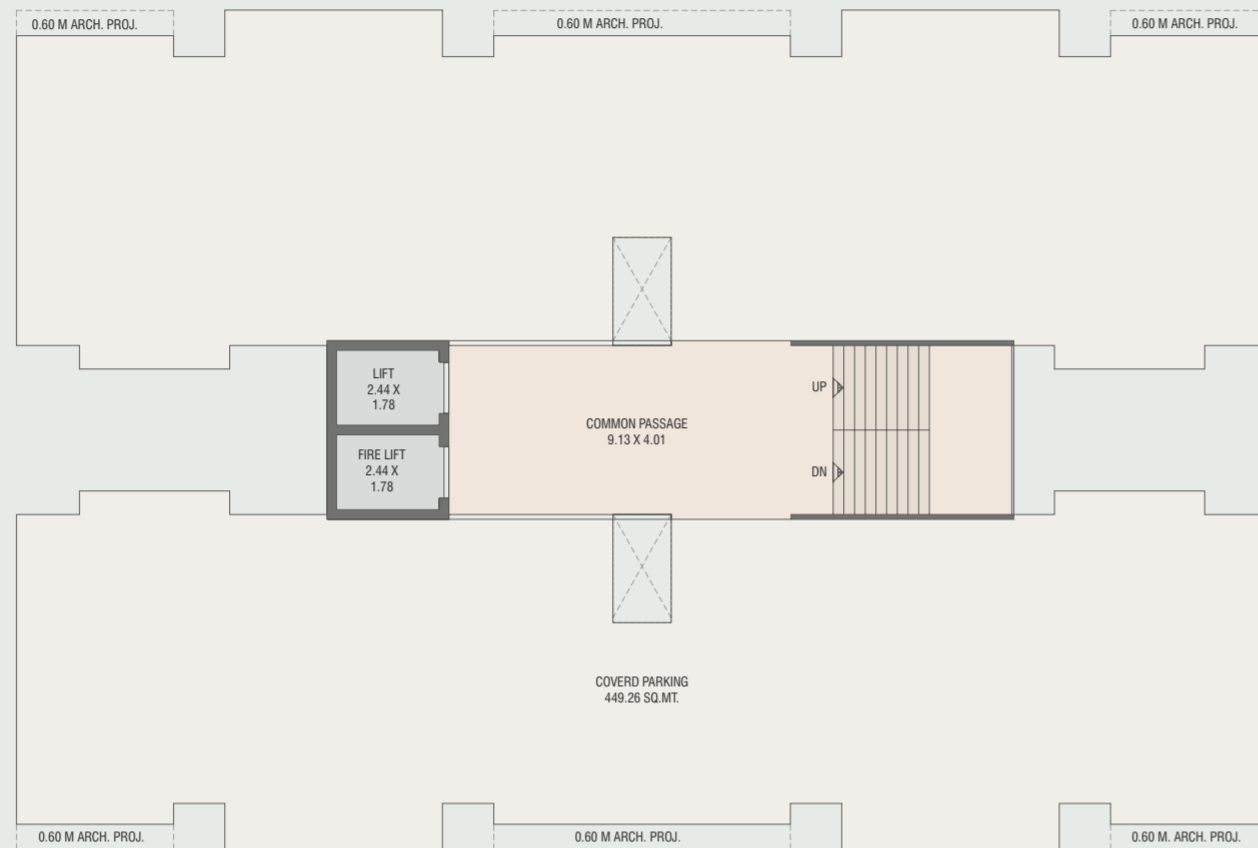


BASEMENT FLOOR PLAN

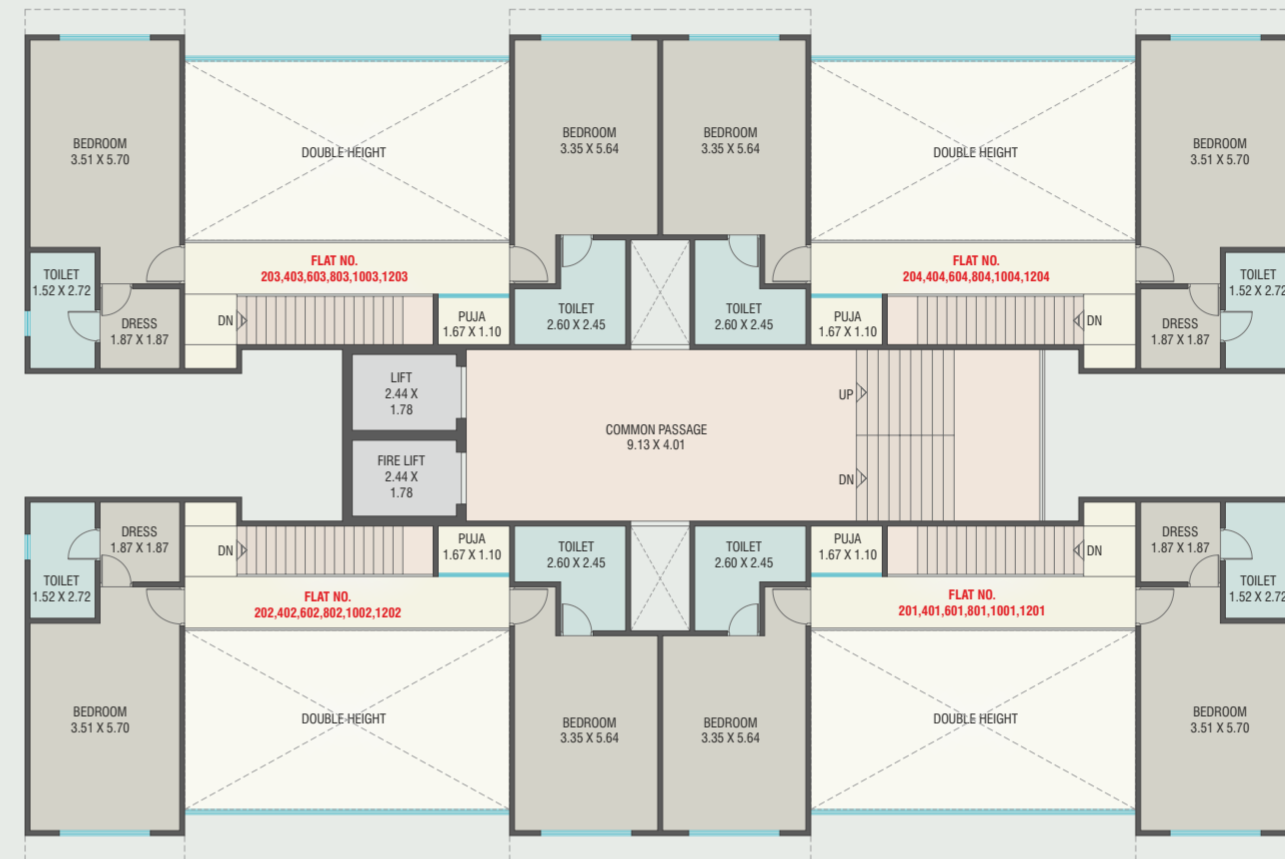


5

 TOWER-A
GROUND FLOOR PLAN



 TOWER-A
(2ND, 4TH, 6TH, 8TH, 10TH & 12TH FLOOR PLAN)

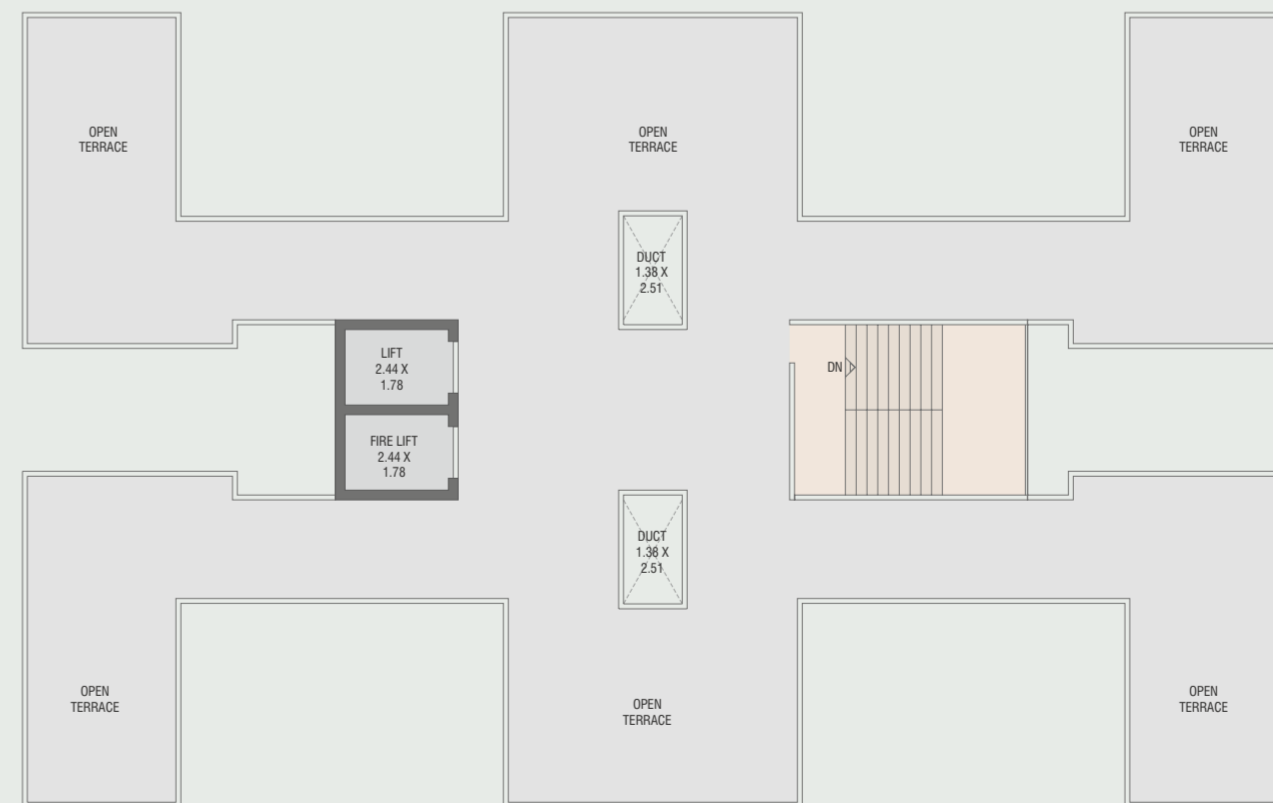


 TOWER-A
(1ST, 3RD, 5TH, 7TH, 9TH & 11TH FLOOR PLAN)



6

 TOWER-A
(TERRACE FLOOR PLAN)

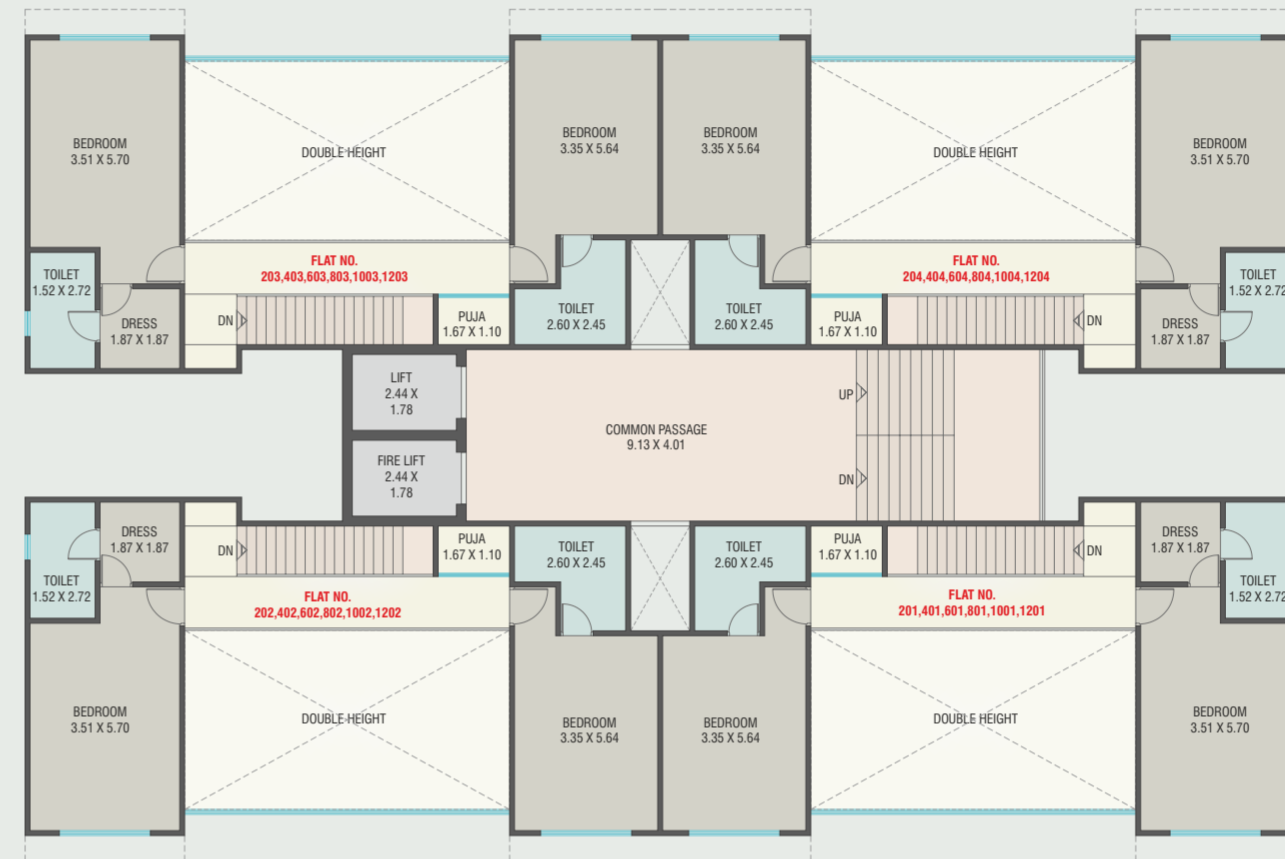


7

TOWER-B
GROUND FLOOR PLAN



TOWER-B
(2ND, 4TH, 6TH, 8TH, 10TH & 12TH FLOOR PLAN)



TOWER-B
(1ST, 3RD, 5TH, 7TH, 9TH & 11TH FLOOR PLAN)



8

TOWER-B
(TERRACE FLOOR PLAN)



9



SPECIFICATION

STRUCTURE

- Earthquake resistant RCC frame structure designed by approved Structural Consultant.

FLOORING

- 1200 X 1800 premium quality glazed vitrified tiles in Living Room, Family Sitting, Kitchen, Dining and Passage with skirting.
- Anti-skid flooring in Bath, Wash and Balcony.

WALL FINISH

- Interior: Smooth finish plaster with 2 coat Putty and Primer.
- Exterior: Double coat plaster with Weather Resistant Paint.

TERRACE

- Elegant China Mosaic finish with water proofing treatment.

ELECTRIFICATION

- 3 phase concealed copper wiring as per ISI Standard of Anchor/Finolax/RR Kabel/ Apar or equivalent.
- Modular switches (Schneider Electric or equivalent).
- Adequate Electric points in each room.
- Geyser points in each bathroom.
- TV point in Living Room and in All Bedroom.



OTHERS

- Power backup for common area & Lift
- Provision for home base inverter.
- CCTV Surveillance in common areas including compound wall, lobby & passages.
- 24 Hours security, Security cabin painted with textured paint.
- 2 High speed elevators in each tower (Schindler/Kone or equivalent)
- Automatic gate.

AIR-CONDITIONING

- Copper and Drain piping done from indoor unit to outdoor unit for each AC point.
- AC point in Living Room & Dining and in all Bedrooms.

KITCHEN

- Premium quality granite platform with Acrylic sink
- Dado up to Lintel Level.

BATHROOMS

- Designer Bathrooms with premium quality bath fittings and sanitary wares (Jaguar/Kohler/Cera or equivalent).
- Premium quality ceramic tiles dado up to Lintel Level.

DOORS

- Main Door: High quality decorative door with veneer Finish on both sides and Wooden Frame. Equipped with Video Door Phone security system.
- Internal Doors: Laminated flush door with Wooden frame and Standard quality lock fittings.

WINDOWS

- Premium quality Dunal section with glass
- Granite frame for window.

- Advanced fire fighting system on ground and basement.
- Each Flat 2 Alloted Car parking
- Main lobby Italian marble flooring with seating. Well designed interiors with false ceiling and decorative lights.
- Anti termite treatment
- 24 hours water supply
- Water softner plant



DEVELOPERS : GAURI INFRA

Site: Florencia, Beside TURF 106, Bh. VCA Cricket Ground, 30 Mr. Priya Cinema Road, Sevasi TP-2, Sevasi, Vadodara.

CALL: 787 444 5252

Email: florencia.52@yahoo.com
Website: www.riddhisiddhigroup.in

ARCHITECT:

DESIGN STUDIO
RACHESH & PARTNERS
AL RACHESH SHETH

STRUCTURE:

ZARNA ASSOCIATES

DISCLAIMER : Premium quality materials or equivalent branded products shall be used for all construction work. - Right of any changes in dimensions, design & specifications will be reserved with the developer, which shall be binding for all members. - External changes are strictly not allowed. - Development charges, GST Charges, documentation charges, stamp duty, all municipal taxes, G.E.B. meter deposit should be levied separate. - Each member needs to pay maintenance deposits separately. - In case of booking cancellation, amount will be refunded from the booking of same premise after deducting 10% of booking amount. - Possession will be given after one month of all settlement of account. - Extra work at the cost of client with prior estimate needs to be given in advance but no change in elevation and plan will be done. - The developer reserve the full right to make any changes. - This brochure does not form a part of agreement or any legal document, It is easy display of project only.