

3 BHK ELEGANT LIVING


PROMOTER ANADI INFRA



Site :   
**GALAXY**  
**BLISS**

Developer  
**ANADI INFRA**

Site Address :  
Galaxy bliss, nr. Galaxy heights,  
opp ramakaka deri, chhani,  
Vadodara 391740  
Ph. +91 99988 96595

Architect  
**SPACE PLUS** 

Structure  
ADCE  
+91 265 234 0032

  
**GALAXY**  
**BLISS**  
**+91 99988 96595**

THE  
FUTURE  
OF  
**LIVING**

AN  
INCLINABLE  
BALCONY  
VIEWS

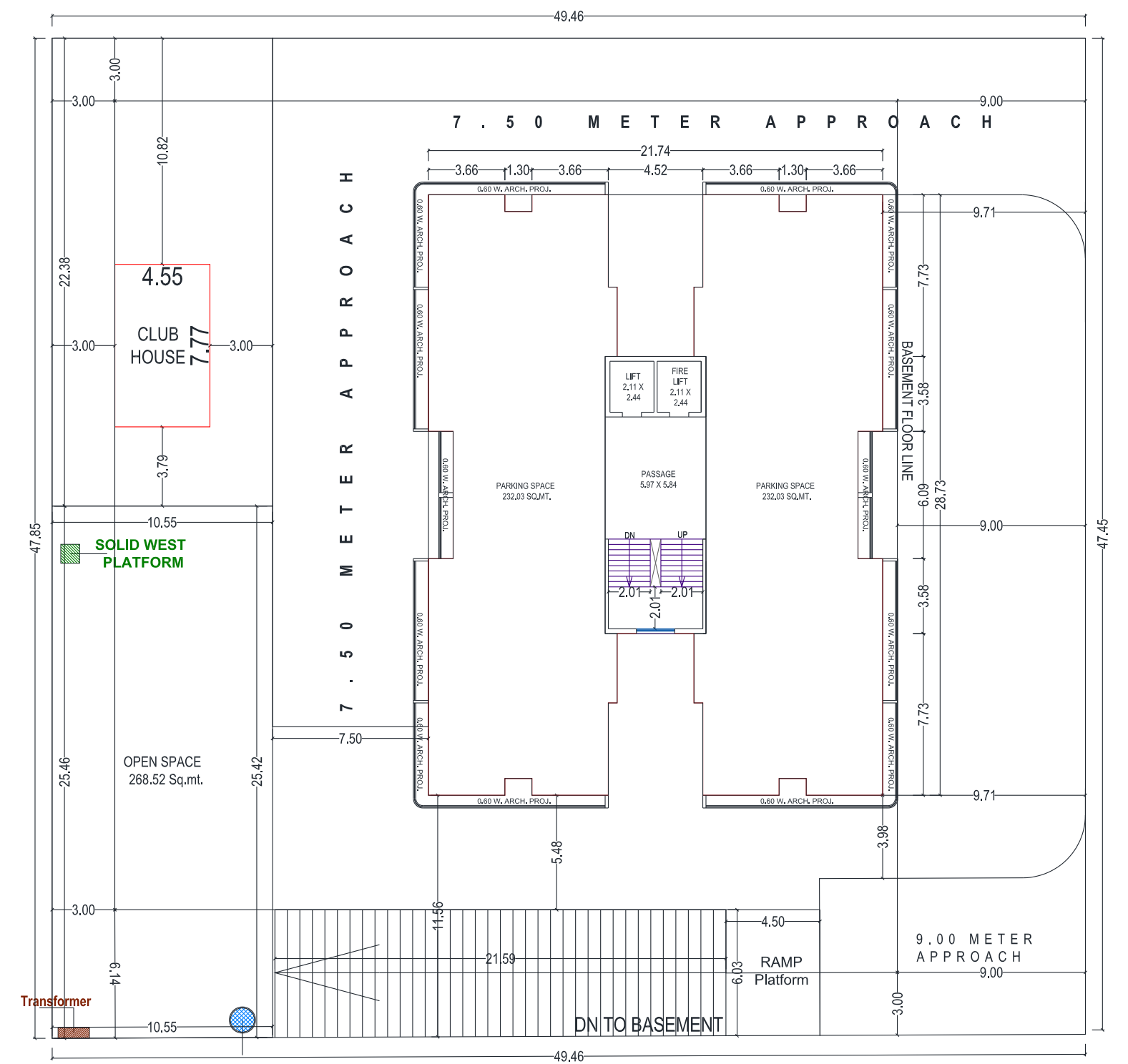
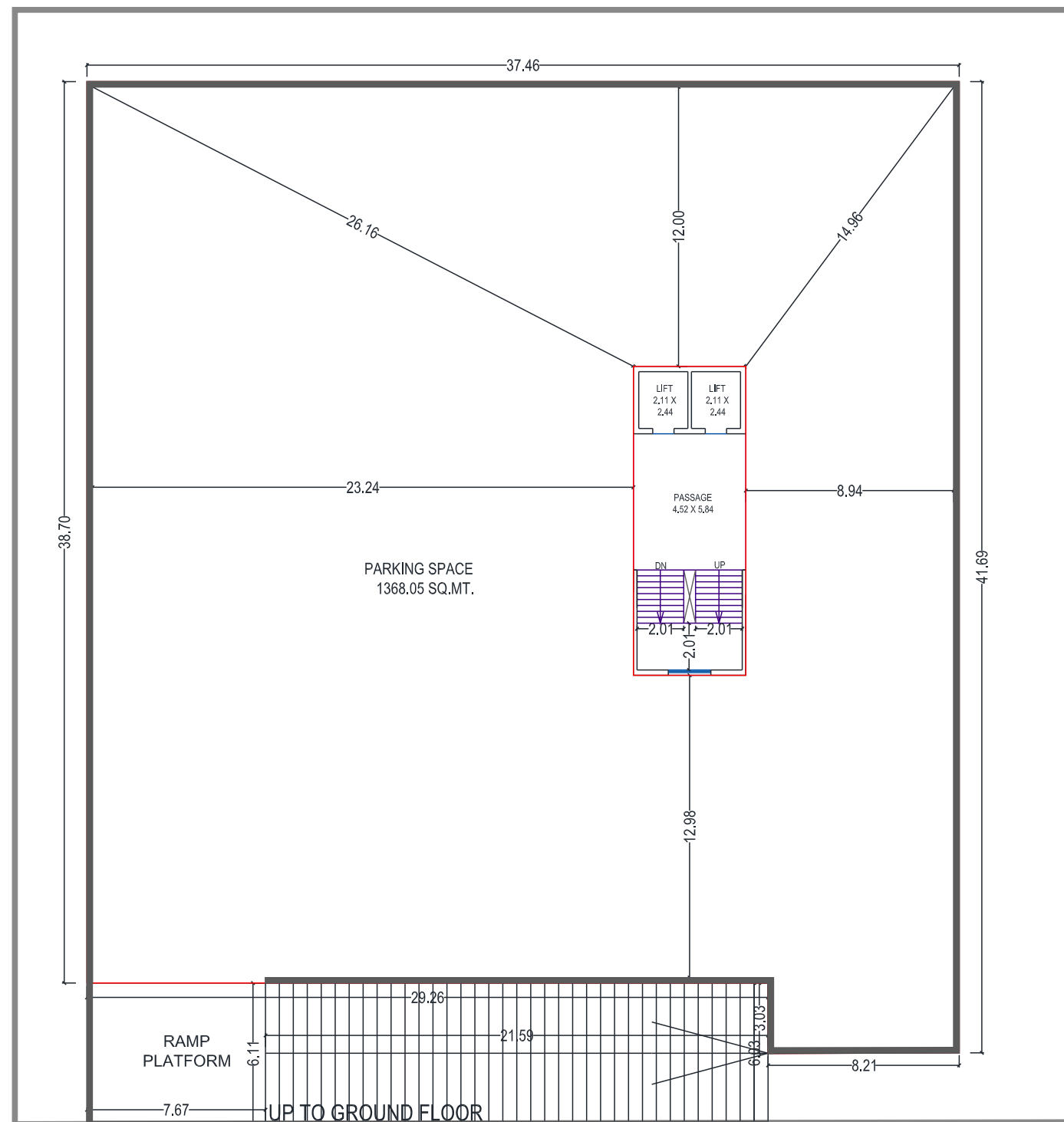




Basement  
Layout

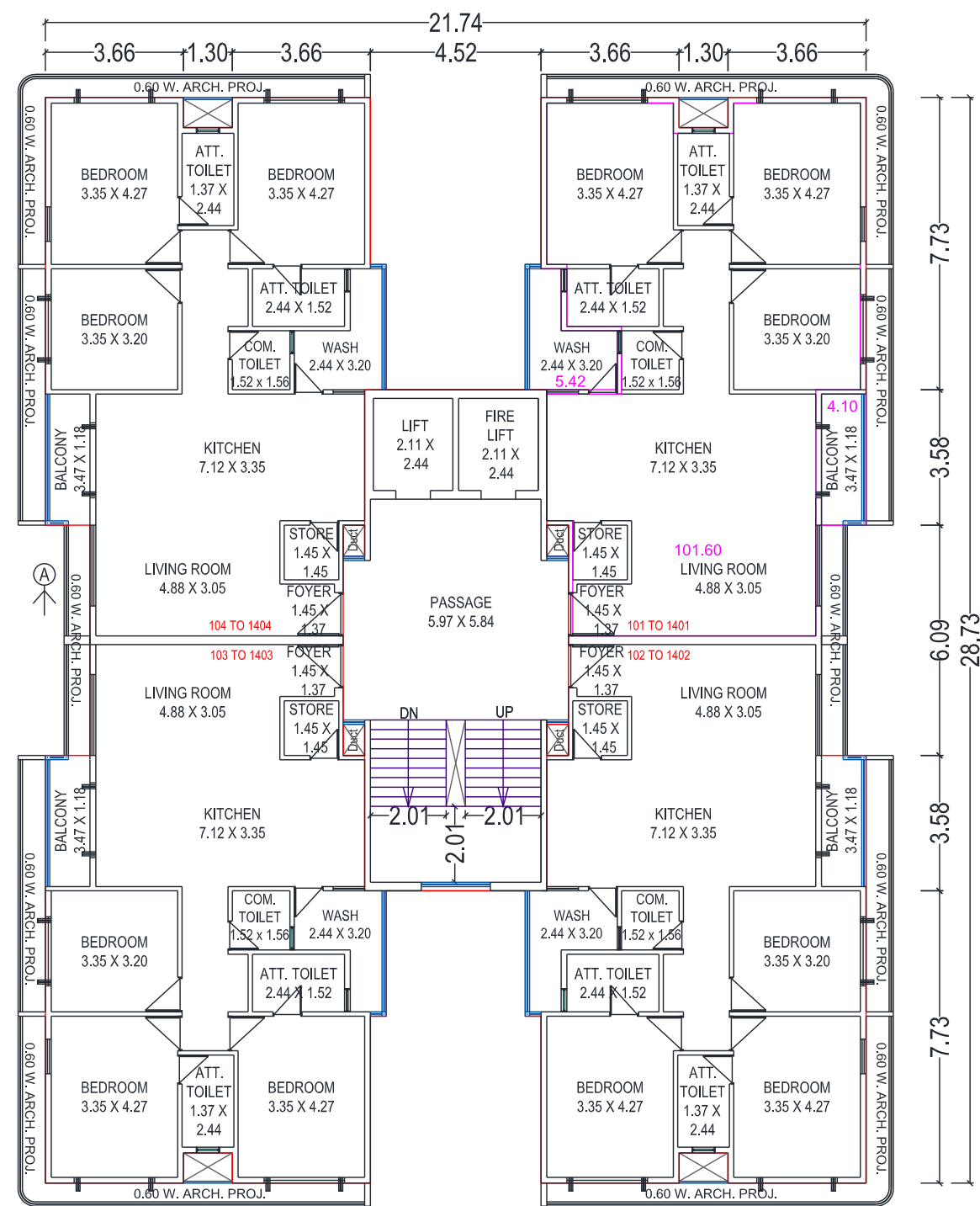


Ground  
Layout





Typical Floor plan



### SPECIFICATIONS

- |                         |  |
|-------------------------|--|
| <b>Kitchen</b>          | <ul style="list-style-type: none"> <li>Premium quality platform with S.S sink.</li> <li>Dedo upto beam bottom.</li> </ul>  |
| <b>Bathrooms</b>        | <ul style="list-style-type: none"> <li>Designer Bathrooms with premium quality bath fittings and sanitary wares.</li> <li>Premium quality ceramic tiles dedo upto beam bathroom</li> </ul>   |
| <b>Doors</b>            | <ul style="list-style-type: none"> <li>Main door - high quality decorative door finish on both sides and wooden frame</li> <li>Internal doors Laminated flush door.</li> </ul>   |
| <b>Windows</b>          | <ul style="list-style-type: none"> <li>Powder coating sliding window with mosquito fully glazed glass shutters</li> <li>Granite frame for window.</li> </ul>   |
| <b>Terrace finish</b>   | <ul style="list-style-type: none"> <li>Elegant china mosaic finish with water proofing treatment.</li> </ul>   |
| <b>Structure</b>        | <ul style="list-style-type: none"> <li>Earthquake resistant RCC Frame structure as per approved structural Consultant.</li> </ul>  |
| <b>Flooring</b>         | <ul style="list-style-type: none"> <li>Premium quality glazed vitrified tiles in Living Room, Family sitting, kitchen, dining and Passage with skirting.</li> <li>Anti-skid flooring in Bath, wash and Balcony.</li> </ul>   |
| <b>Wall Finish</b>      | <ul style="list-style-type: none"> <li>Interior : Smooth finish plaster with 2 coat Putty and Primer.</li> <li>Exterior : Double coat plaster with Weather resistant Paint.</li> </ul>   |
| <b>Electrification</b>  | <ul style="list-style-type: none"> <li>3-phase concealed copper wiring as per ISI Standard.</li> <li>Modular switches.</li> <li>Adequate electric points in each room as per Architect's planing.</li> <li>Geyser points in each bathroom.</li> <li>TV point in Living Room and in all Master Bedroom.</li> <li>Seperate MCB for each room.</li> </ul> |
| <b>Air-Conditioning</b> | <ul style="list-style-type: none"> <li>AC point in living Room and in all Master Bedrooms.</li> </ul>  |