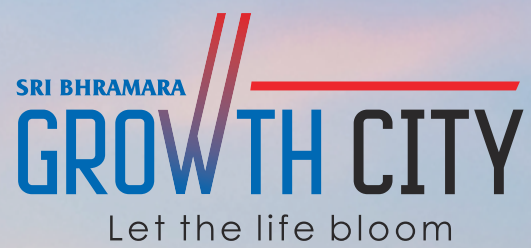
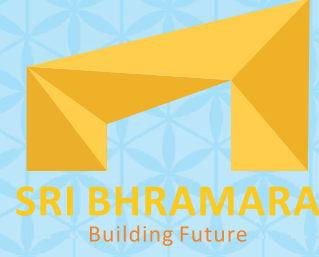




The sky is the limit for luxurious living





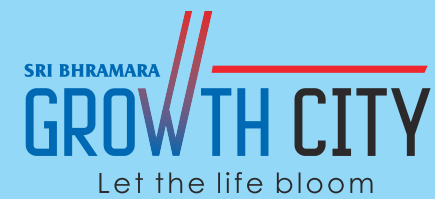
Builders of repute

Sri Bhramara, launched in the year 2015, has become a trusted name for making over 7000+ families happy during the last 7 years. Today, Sri Bhramara is an established name with a track-record of developing innovative projects emphasizing on contemporary architecture, strong project execution and quality construction. Building immense trust among our customers, we are proud to have repeated investors and strong referrals.

Our core strength lies in accurate identification of locations that have guaranteed scope for exponential growth. Creating aspirational developments with distinctive designs, Sri Bhramara continues to evolve as a company and create spaces that enhance the customer's lifestyle. Primarily focussing on residential projects, we also have a diversified portfolio of projects covering every key segment of the real-estate market.



ఇల్లంటే తల్లిలాంటిదని
మా విశ్వాసం



Welcome to a Happy Life

At Growth city, it's all about you, your family and your friends enjoying life to the fullest. Step into a world of unlimited happiness amidst lush green environs. Built with abundance of luxury, for a lavish lifestyle, this marvellous project Growth City, Medarametla has been created for elite people like you.

This posh Residential cum Commercial Venture is brought to you by Sri Bhamara Townships Pvt. Ltd., complete with all amenities and facilities which will not only win your heart but will also be available at an affordable budget. We plan on bringing the metro-like lifestyle to the smaller counterparts of Andhra Pradesh.

These are our little steps towards fulfilling the bigger vision of our former President Dr. APJ Abdul Kalam, as mentioned in his book 'Target 3 Billion', of Providing Urban Amenities in Rural Areas (PURA).





Connecting Dreams - Transforming Rural Areas through Urban Opportunities

The objective and aspiration is to offer essential services, including civic amenities, education, healthcare, employment opportunities, and a safe and pleasant way of life. With the increasing demand for urban living over the years, there is a potential for cities to become densely populated in the near future, leading to various associated challenges.

The agricultural sector in India heavily relies on a 70% contribution from its output for livelihood. However, the migration of young individuals from farms and villages to cities has resulted in a shortage of youth in the agricultural sector, thereby weakening its overall productivity and sustainability.

Achieving a balanced and harmonious coexistence between rural and urban lifestyles is crucial for the overall development of a country. It is essential to provide modern facilities, amenities, and a comfortable lifestyle in rural areas as well. This vision of a holistic development approach was championed by the esteemed global thought leader, Bharat Ratna Sri Dr. **APJ Abdul Kalam**, former President of India. Inspired by his visionary leadership, Sri Galla Ramachandra Rao, CMD of Sri Bhramara, embraced the ideals and goals of PURA (Provision of Urban Amenities in Rural Areas) and successfully transformed them into reality in the remarkable Zenith City of Vinukonda.



1 Location

If we take into consideration, the rapid infrastructural development and the provision of civic amenities at this ultra-luxurious project Growth City @ Medarametla, located between Ongole and Addanki Towns, we foresee, people from 200 surrounding villages migrating to Medarametla to become part of the growth.

The region known as Growth Centre, located 1 km away from Growth City, is poised to transform into an industrial hub where approximately 25,000 persons are already employed. We assure you that along with superior, urban lifestyle our residents will have the privilege of living at this exclusive address. One of the most important benefits with this project is that you can upgrade your living and social status.



Just 2 km away from the Largest Employment
location in Prakasham District **APIIC Growth Centre**



LAYOUT PLAN

Errapalem Village,
Bodduvanipalem Revenue,
Korisapadu Mandal,
Prakasam District.

2C



SRI BHIRAMANA
GROWTH CITY
Let the life bloom



2B

- 2A
- 2B
- 2C

- SIMPLEX HOUSES
- DUPLEX HOUSES
- VILLAS

2A

Project Highlights

- Green natural surroundings
- Club House
- Parks
- Children's Play Area
- Highway Restaurant
- Function Hall
- Cricket Ground
- 80'/60'/40' CC Roads
- Water Connection to every house
- 2 and 3 Phase Electrical Lines
- Rainwater Harvesting Pits for water conservation
- Solar Fencing Compound wall surrounding the Project
- 120 acres approved ONUDA Layout
- Overhead tank of 12lakh litre capacity. The largest and first of its kind in the entire Real Estate segment of Andhra Pradesh
- 100% Clear Title
- Planned perfectly as per Vaasthu

Plan showing the approved layout

LP No. 24/2022/1174/DTCP/DPMS in R.S.Nos.: 482/2A; 483/2A1; 498/1; 500/1, 3A; 501; 503/1, 3(P), 3A; 505/1A, 1C, 3A, 3C(P); 511; 512/1(P); 513/1(P); 566/1(P); 569/2A(P), 4; 571/1, 2 & 575/1B(P) of Errapalem Village, Bodduvanipalem Revenue, Korisapadu Mandal, Prakasam District.



INDIVIDUAL HOUSE

Incomparable

In the process of creating the most charming Growth City to delight each and every member of your family, we have used our immense expertise and experience to design the very best. The project has numerous aesthetically designed 2 BHK homes. We have smartly designed these lovely abodes to suit your family. These beautiful homes are planned to provide you sufficient parking space along with spacious interiors. Our individual homes are built with a durable and sturdy structural foundation that is designed to endure for generations, serving as a valuable asset for the future.

EAST FACING
PLOT AREA - 33'x50'
183 SQYDS
BUILT-UP AREA - 1106 SQFT



TYPICAL FLOOR PLAN





WEST FACING
PLOT AREA - 33'x50'
183 SQYDS
BUILT-UP AREA - 1106 SQFT



TYPICAL FLOOR PLAN



DUPLEX HOUSE - EAST FACING



Awesome Ambience

Every moment you spend in these beautiful homes will double your happiness with your loved ones. These attractive 2143 Sqft elegant duplex apartments with 2 bedrooms, are plush and equipped with the latest most modern facilities. This fancy, luxury filled home will reflect your lavish and opulent lifestyle.



DUPLEX HOUSE - WEST FACING

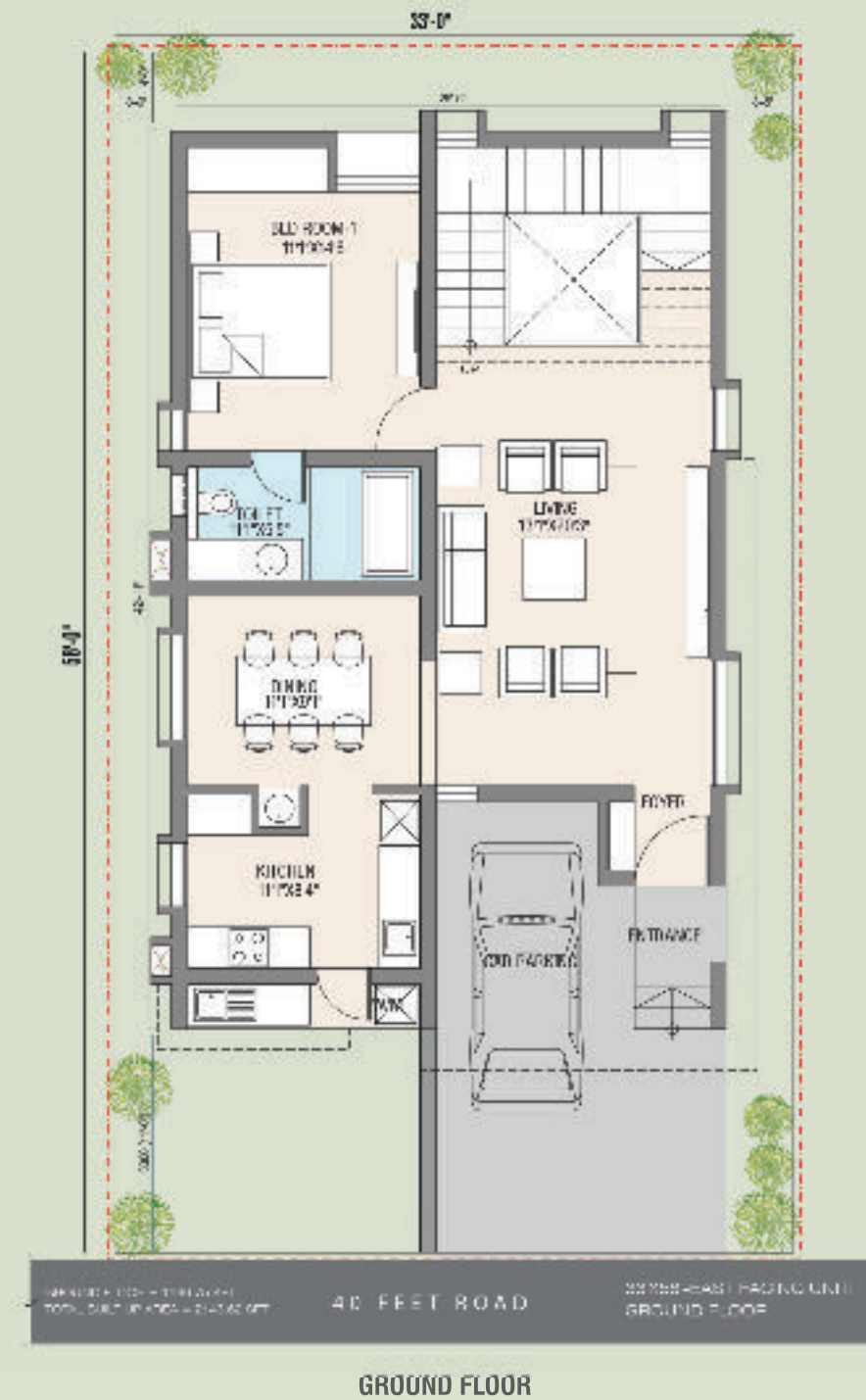
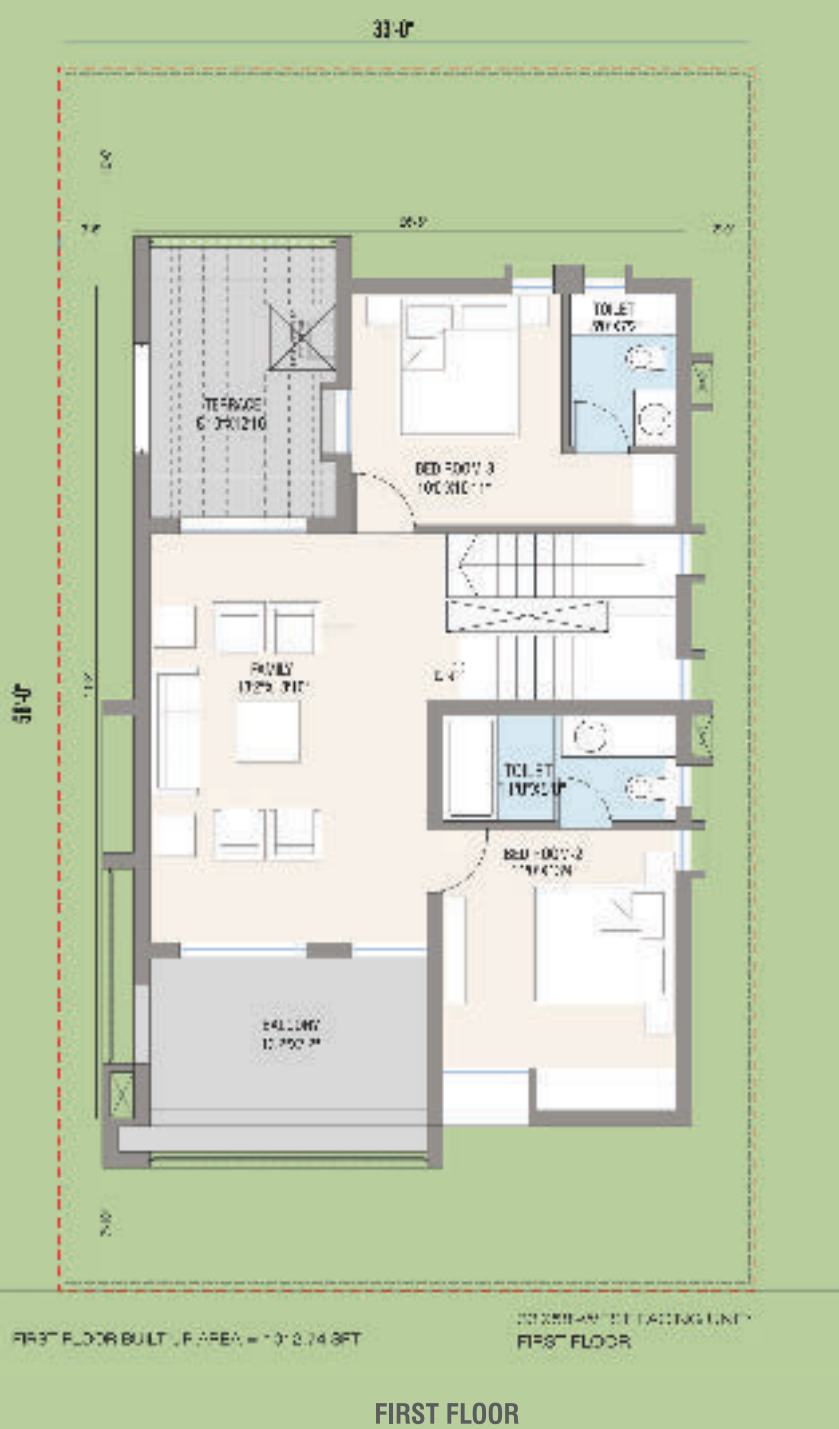
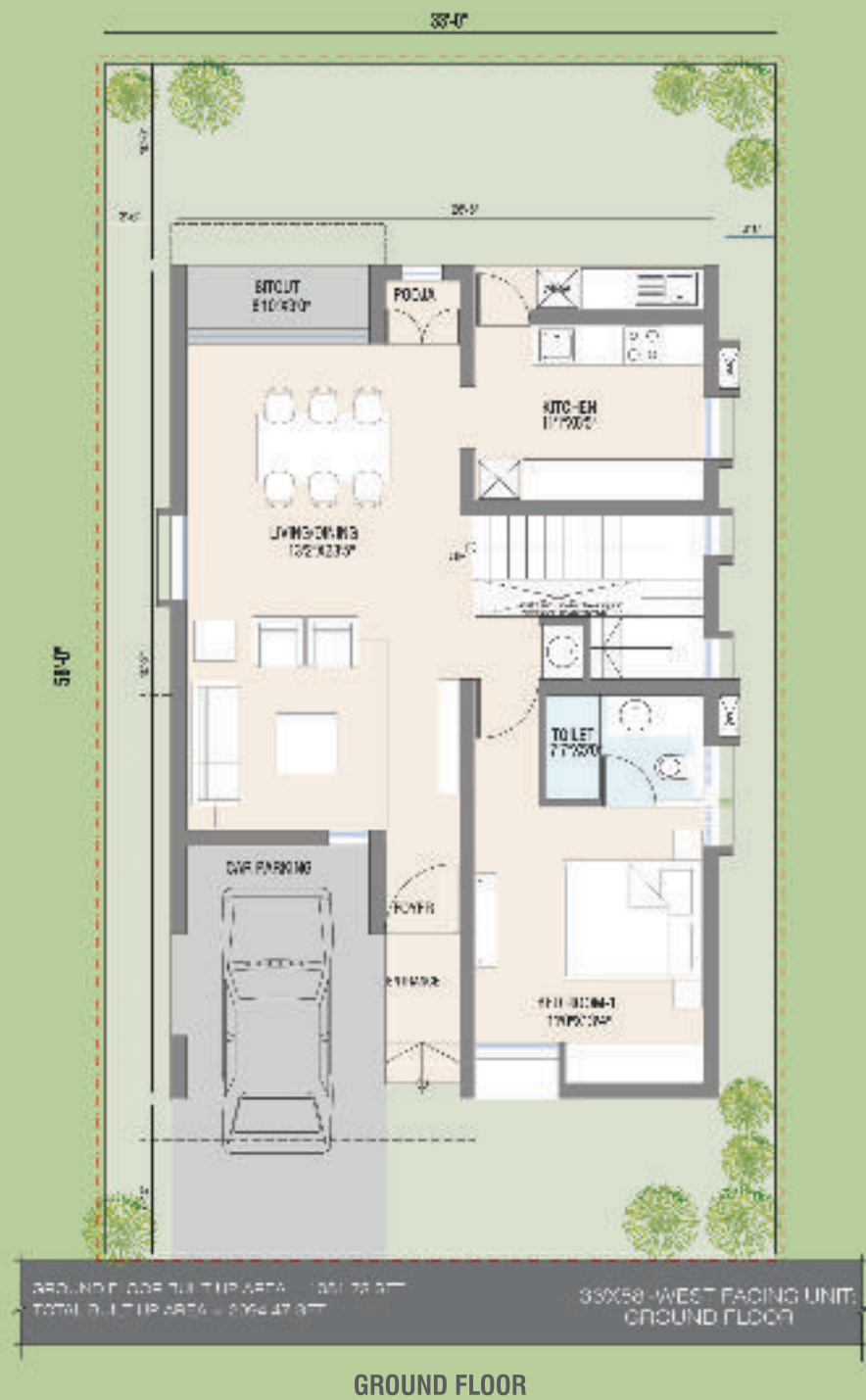


DUPLEX HOUSE'S FLOOR PLAN



WEST FACING
PLOT AREA - 33'x58'
 213 SQYDS
BUILT-UP AREA 2095 SQFT

EAST FACING
PLOT AREA - 33'x58'
 213 SQYDS
BUILT-UP AREA 2145 SQFT





Luxury, Redefined.

Luxury is another name of Growth City, Medarametla. Our villas are all about luxurious amenities, posh interiors, smart planning and soothing treescape. Standing on its terrace, you get a breathtaking view of this mega project. An extra perk - Our villas are even compliant with vaasthu. These villas have been built to satisfy your trust in our excellence and your desire for beauty.



VILLA EAST FACING



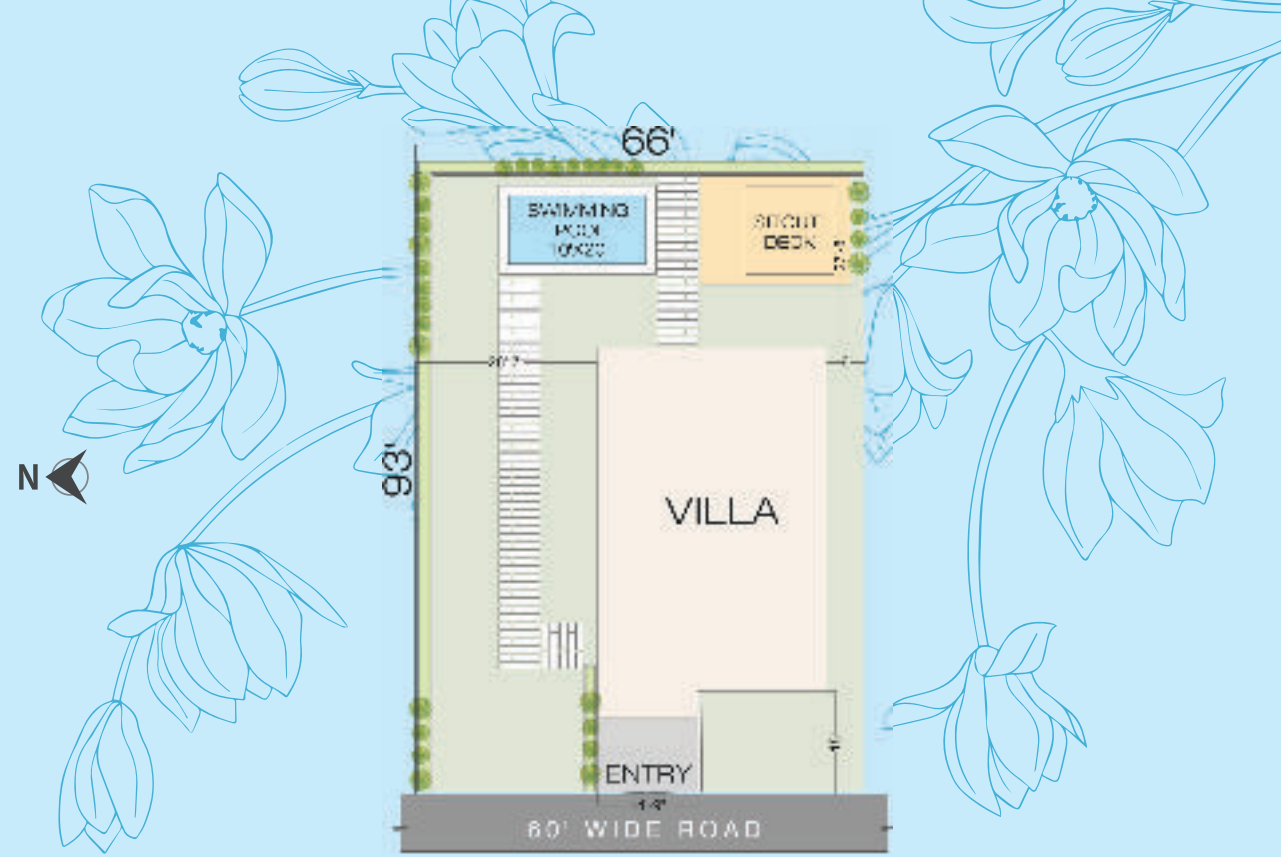


VILLA WEST FACING

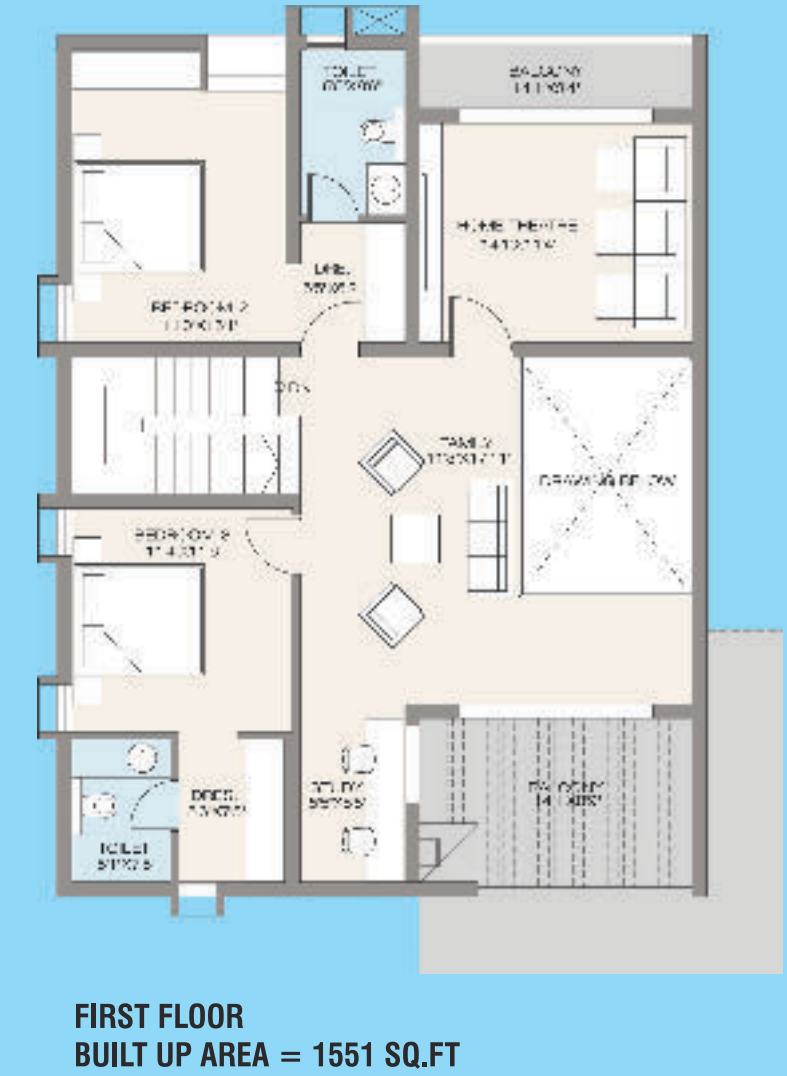
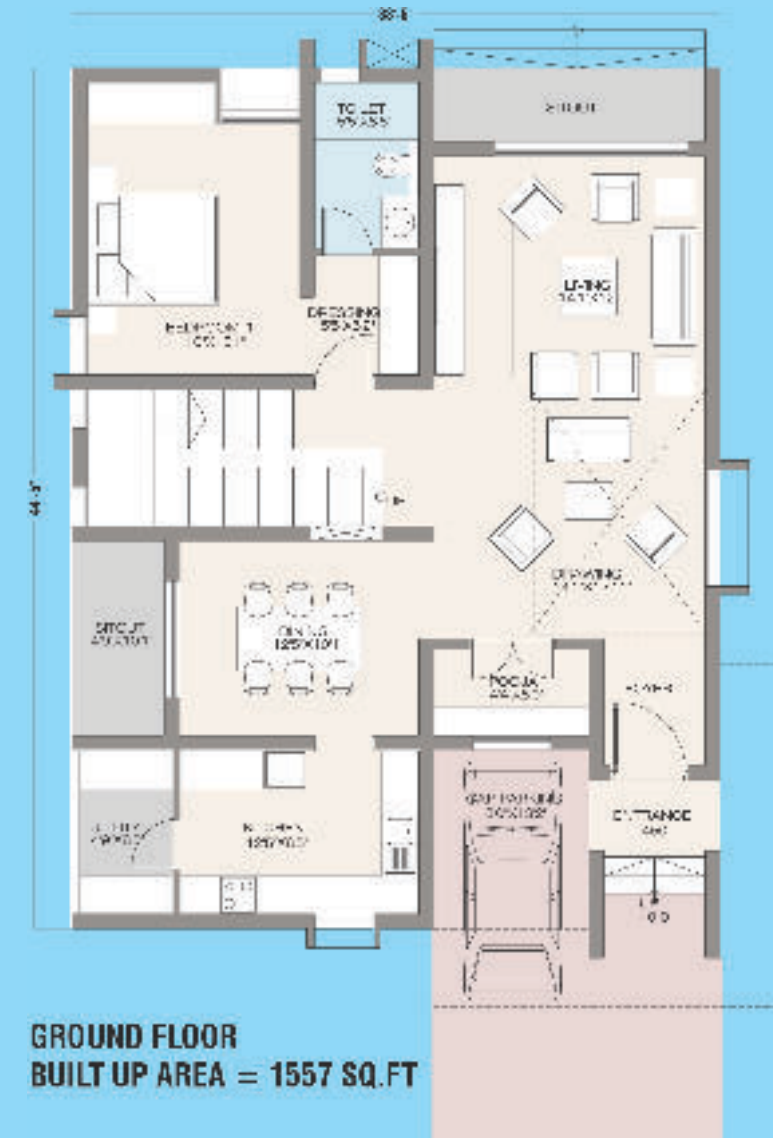
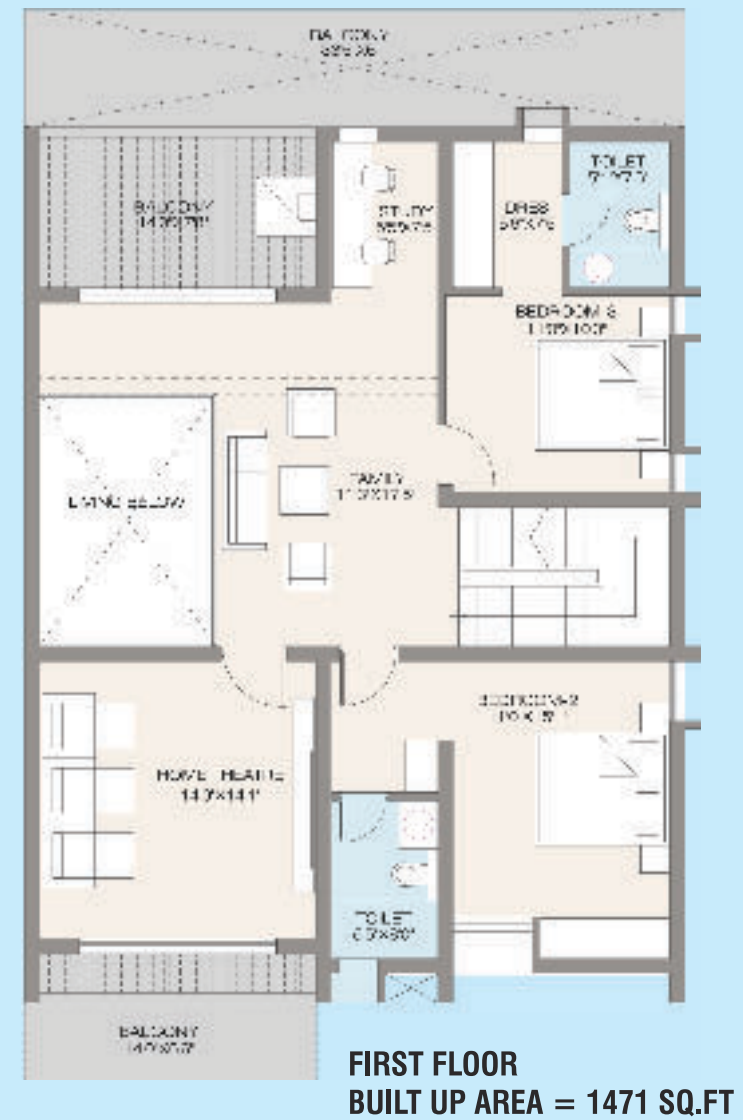
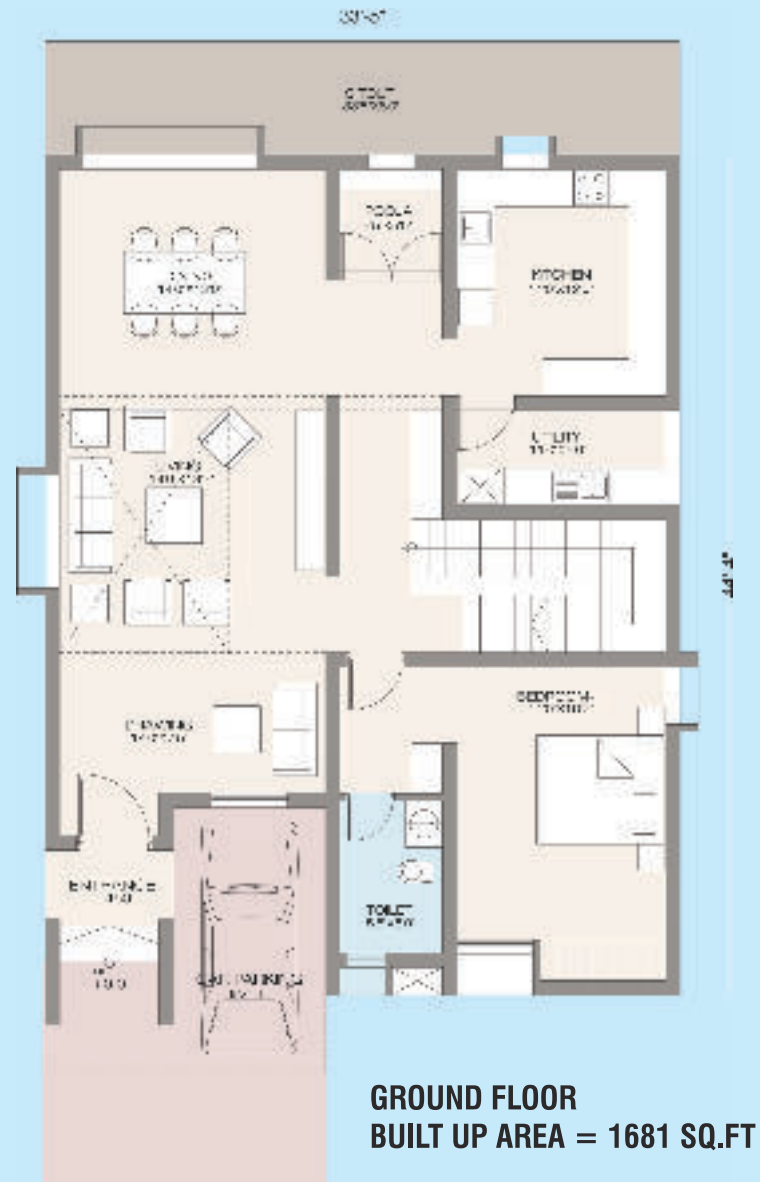


VILLA'S FLOOR PLAN

WEST FACING
PLOT AREA 66'x93'
682 SQYDS
BUILT-UP AREA 3152 SQFT



EAST FACING
PLOT AREA 66'x93'
682 SQYDS
BUILT-UP AREA 3108 SQFT

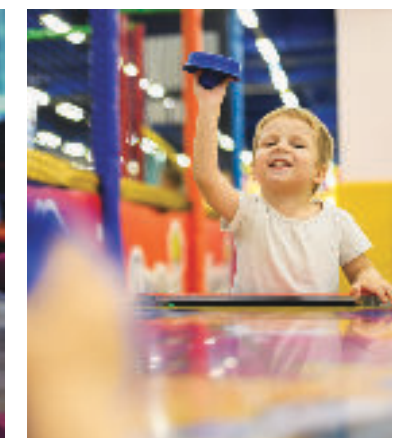


*Swimming Pool is optional and can be provided at extra cost

CLUB HOUSE

Unwind

Unwind and relax in the enchanting ambience of our Growth City Resorts during weekends and enjoy quality time with your kids. You can have fun playing amazing games with your kids or socialize with friends in our cozy Lounge. Transform your weekends into a something enjoyable and special.



Every Comfort for Your Pleasure

- Spacious Interiors
- Swimming Pool
- Play Zone
- Indoor Games
- Indoor Badminton Court
- Lavish Lounge
- Modern Amenities
- Gym
- Banquet Hall
- Restaurant
- Library
- Provision Store

Alluring Island of Charm

Immerse yourself in a captivating oasis of vibrant colors and enchanting fountains, where the tranquil beauty of evening embraces you. Experience the serenity of nature with gentle breezes, melodious birdsong, and a breathtaking backdrop, creating a truly enchanting ambiance.



Growth City- Highlights

- Growth city offers a range of modern amenities such as education, healthcare, employment opportunities, comfortable lifestyles, and secure housing options.
- Growth City is strategically situated near the National Highway NH-16, which serves as a vital link connecting Eastern India from Kolkata to Kanyakumari and running parallel to the coastal corridor of Eastern India. Additionally, in close proximity to Growth City, there is a bustling growth center hosting 25,000 employees and 2,500 industries. The location of Growth City also benefits from easy access to rail, road, and airport transportation, enabling convenient travel to any part of the country.
- Sri Bhramara's remarkable Growth City stands as the exclusive destination offering exceptional job opportunities, career prospects and a vibrant, opulent way of life.
- Growth City boasts a comprehensive surveillance division that ensures round-the-clock security, including a compound wall fortified with solar fencing and surveillance cameras, to maintain constant vigilance over the surroundings.
- Robust and strong concrete and cement roads
- Mirroring the most hygienic conditions, the provision of a concrete drainage system

Play Parks

Flower Park

Enter a mesmerizing fantasyland of vibrant colors and fragrances, where exotic blossoms and delicate petals create an enchanting paradise of serenity and awe-inspiring beauty.

Mudra Park

Find inner peace and harmony in nature's embrace, a serene sanctuary amid breathtaking beauty for mindful rejuvenation.

Yoga Park

Discover rejuvenation in a serene sanctuary, where mind, body, and spirit harmonize amidst tranquil surroundings and lush greenery, offering solace and inner peace.

Open Gym

Reach new fitness heights in our invigorating outdoor gym, where nature's beauty and fresh air fuel your motivation. Sculpt your body and unlock transformative wellness as you engage in exhilarating workouts amidst an enchanting backdrop.



Get Fit, Have Fun, Be Entertained

TATA Theme Park

Tata Group: Founder Jamshedji TATA. Established in 1868 @Headquarters Mumbai. Tata products and services are in 150 countries across 6 continents. Approximately 9,35,000 people are working.

Enter a mesmerizing tribute to Tata, which unveils the splendor of the profound influence on India's advancement, presenting monumental milestones, extraordinary achievements, legendary artifacts, and inspiring narratives behind this magnificent legacy. Immerse yourself in a world of unfolding history, to witness the remarkable saga of success of India's largest industrial empire.

Avengers Park

A realm of enchantment and endless amusement, where young adventurers embrace their imaginations with larger-than-life superheroes, creating pure joy.

Embrace Fitness

Fuel your passion for sports and unlock boundless energy for an invigorating, active lifestyle at Growth City with top-notch facilities for various sports like basketball, badminton, volleyball etc.

Children's Park

At Growth City, our children's park offers an enchanting haven that combines safety, boundless creativity, and exhilarating theme parks, sparking effortless learning and pure joy. Embark on a thrilling adventure where adventurous spirits find fun-filled activity in secure surroundings. Meanwhile, our kids play area provides a platform for little adventurers to explore, build confidence, and experience the joy of laughter-filled journeys of discovery with push bike rides and an endless choice of games on offer.

Specifications

Structure	: RCC framed structure, solid brick masonry for internal and external walls
Steel	: Vizag Steel or equivalent TMT bars
Cement	: KCP / Sagar or equivalent
Brick Work	: Exterior: 9" walls; Internal: 4 1/2" walls with red clay bricks
Internal Walls	: Smooth putty finish with 2 coats of putty (1 coat primer / 2 coats interior paint)
External Walls	: Front elevation: Texture / Putty finish; Other walls: 1 coat premier / 2 coats exterior paint
Main Door	: Polish quality teak wood frame with teak wood shutters with polish
Internal Doors	: Paint quality teak wood frames with flush shutters & enamel paint
Windows	: UPVC frames with glass and MS grills with enamel paint
Kitchen	: Polished granite platform, stainless steel sink, ceramic tiles 2' above working platform
Flooring	: Vitrified tiles of 2'x2' size for living and bedrooms with 4" skirting
Toilets	: Anti-skid ceramic tiles for bathrooms, with skirting tiles 6'
Wardrobes	: Cement planks in kitchen & bedrooms
Plastering	: Plastering with cement mortar with sponge finish and wall care / emulsion paint
Plumbing	: PVC pipes: Prince / Equivalent; CP fittings: Ashirvad / Equivalent; Half-pedestal washbasin: Cera / Equivalent; Washbasin for dining area: Cera / Equivalent; 1000 litres of water tank capacity
Electrical	: Concealed copper wiring from Gold medal / Equivalent (Single phase - ISI Mark) with modular switches and sockets from Gold medal / Equivalent
T.V. & Telephone	: TV & Telephone points in hall & master bedroom
Water	: Water supply from overhead tank

Note: (i) Any area over and above the offered dimension will be charged extra as per the company norms.

(ii) All commercial amenities will be chargeable.

Ongoing projects

A Tradition of Trust

It is our pride of achievement, that we have fulfilled the dream of every aspirant who desired a dream home. Our ultra-luxurious villas, residential homes, and commercial spaces, are testimony to our legacy of trust. This has always been our aim and we continue to excel throughout our journey of success. Our previous completed projects and ventures are proof of our passion for creating exceptional developments for remarkable lifestyles.



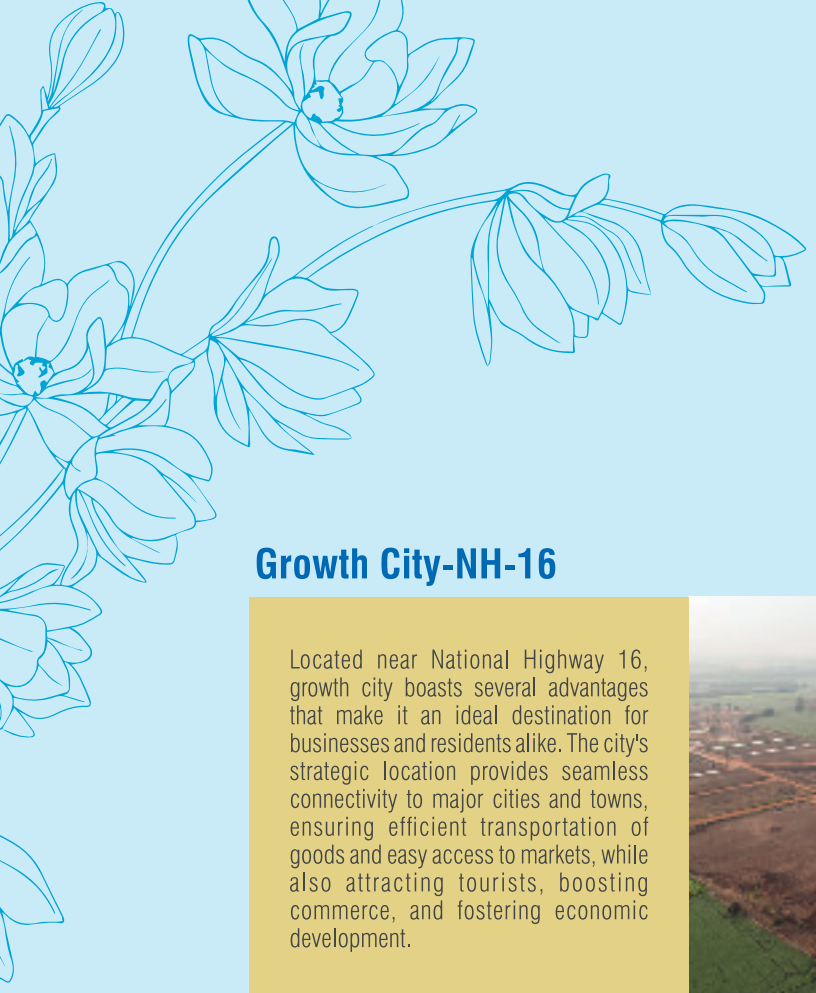
Upcoming project:



The Alohaa Beach Resort is one such project by Sri Bhramara that offers stunning beach views, prime location, and excellent facilities, making it a favourite coastal property for both pleasure and investment.

Completed projects





Nearby Landmarks

Growth City-NH-16

Located near National Highway 16, growth city boasts several advantages that make it an ideal destination for businesses and residents alike. The city's strategic location provides seamless connectivity to major cities and towns, ensuring efficient transportation of goods and easy access to markets, while also attracting tourists, boosting commerce, and fostering economic development.



Growth Centre

Positioned as an industrial growth center, this thriving area offers a host of advantages for industries. The strategic proximity to the highway ensures easy transportation of raw materials and finished goods, facilitating efficient supply chain management and reducing logistics costs, while also attracting investments and fostering a robust ecosystem for industrial growth, job creation, and economic prosperity.



2 Km from Growth City

Water and Dam

The area with abundant water resources, thanks to a strategically located dam in the vicinity. This water source provides a reliable and consistent water supply for the city's residents, agriculture, and industries, ensuring sustainability and supporting the overall development and growth of the region.



Ongole

Ongole is a vibrant city located in the Prakasam district of Andhra Pradesh, India. Known for its rich cultural heritage and historical significance, Ongole is renowned for its famous Ongole cattle breed and is a major commercial and educational hub in the region.



19 Km from Growth City

ADDANKI

9 kms

SINGARAKONDA
DEVALAYAM

13 kms

BEACH AREA

30 kms

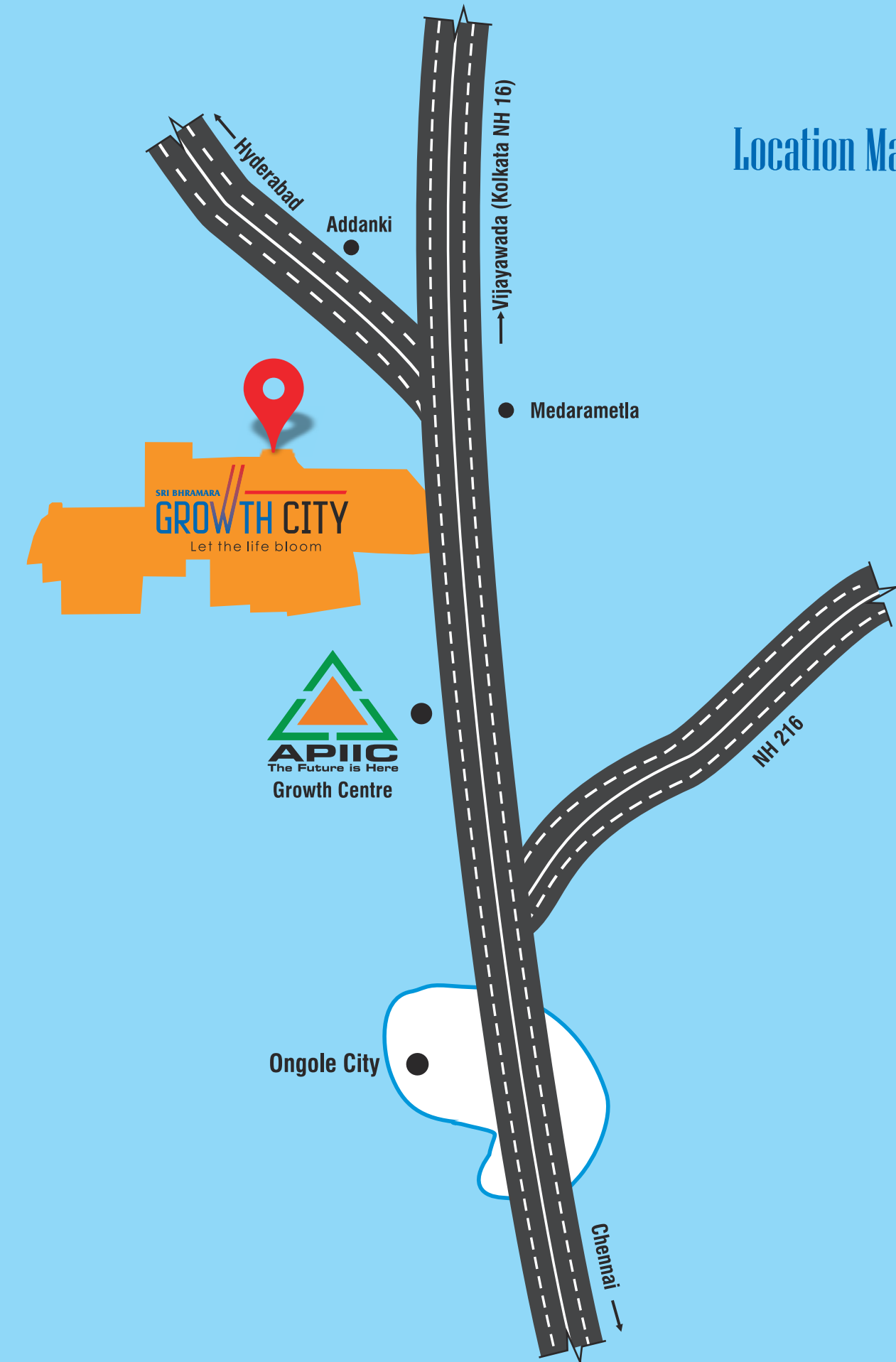
CHILAKALURI PETA

45 kms

CHIRALA

40 kms

Location Map





SRI BHRAMARA TOWNSHIPS PVT. LTD.

Corporate Office

Vishnu Nilayam, Door. No. 59A-15-33,
Badraiah Nagar, Panta Kaalva Road,
NTR Circle, Patamata, Vijayawada. A.P. - 520 010

Registered Office

D.No. 6-10-28, 2nd Floor, Priyanka Complex,
10/1, Arundalpet, Guntur, A.P. - 522 002
Ph: 0863 - 2353299

E: info@sribhramara.com



Site Location



www.sribhramara.com

Guntur | Krishna | N.T.R | Bapatla | Palnadu | Prakasam

Note: This brochure is only a conceptual presentation and not a legal offering. The promoters reserve right to make changes in plans, elevation and specifications as deemed fit.