



Site Address: House no. 1-7-10, RTC X Roads (Golconda Crossroads) Hyderabad, Telangana.

**GLEN TREE**
HOMES

Corporate Address: Glentree City Homes LLP, H.No. 8-2-293/82/A/1130 & 1130/1 Plot No. 1130,
Ground Floor, Shreya Towers, Jubilee Hills, Road No. 36, Hyderabad – 500033.

 www.glentreehomes.in |  sales@glentreehomes.in



Permit Number: 1638/GHMC/SWBP/SEC1/2025



No.: P02500010245

Home loans available from      

Note: This brochure is purely conceptual and is not a legal document. Glentree Homes reserves the right to add / modify any terms and conditions, amenities / facilities, specifications and plans mentioned herein.

**GLEN TREE**
HOMES
P R E S E N T S

GLEN TREE
ONYX
AT RTC X ROAD, HYDERABAD

CRAFTED TO BE
UNIQUELY YOURS.

THE ONLY ADDRESS YOU NEED
FOR ALL THAT YOU DESIRE



Residential Floors
(1st Floor is on 8th Level)

Double Height
Clubhouse

5 Level Parking

Artist's Impression

Welcome to

GLENTREE

ONYX

AT RTC X ROAD, HYDERABAD

— PROJECT HIGHLIGHTS —

Spread on a **1.82-Acre** Land Parcel

35-Floor Residential Tower, Total **245** Residential Units

Exclusive **3** and **4** BHK Residences

2-Level Basement and **5** Stilt Levels for Parking

— REGULATORY APPROVALS —



GHMC Approved



TS RERA Registered



IGBC Gold Pre-Certified (Proposed)

— THE ONLY PROJECT WITH ICONIC HALLMARKS —



Secured,
Gated Community



Adequate Parking, with
Two Parking Spaces for Every Flat



Iconic Architecture, Making
this Address a Landmark



50+ Thoughtfully Planned
Amenities Across Key Lifestyle
Categories for all Ages



The First and Only
High-Rise Tower in the Area, offering
Panoramic City Views from the upper floors



Fully **Vaastu-compliant**
Homes



Quality Construction
using Reliable Materials



Designed by Top
Architects and Engineers



Temple within
the premises



Dedicated **Observation**
Deck on the Terrace, Crafted for
Uninterrupted 360 Degree City Views



Accessibility: Metro, Road,
and Train Connectivity

ONLY-OF-ITS-KIND MULTI-GENERATIONAL
LIFESTYLE AVENUES SPREAD OVER

34,000 SQ.FT. ACROSS 5 ZONES

ZONE - 1

GROUND LEVEL AMENITIES

- Grand Entry Plaza
- Entrance Water Feature
- Volleyball Court
- Badminton Court
- Practice Basketball Court
- Floor Games Zone
- Interactive Play / Golf Simulation



ZONE - 2

SERENITY CORNER AMENITIES

- Practice Skating Rink
- Amphitheatre
- Pergola Seating
- Rock Climbing Wall
- Pathway
- Stepping Stones
- Temple Lawn
- Senior Citizens' Garden
- Kids Play Area
- Outdoor Fitness Zone
- Green Mounds & Plantation
- Pickleball Court
- Board Games / Seating Plaza
- Performance Stage
- Central Lawn
- Box Cricket Arena



ZONE - 3

PODIUM LEVEL AMENITIES

- Walking Track
- Sunrise Deck / Activity Stage
- Open Lawn
- Sculpted Mounds
- Reflexology Path
- Comfortable Seating Pockets
- Sunset Deck
- Sunken Seating Lounge
- Work-From-Nature (Sunken Zone)
- Seating Plaza
- Boundary Plantation



ZONE - 4

CLUBHOUSE AMENITIES

FITNESS & SPORTS

- Swimming Pool
- Fully Equipped Gym
- Indoor Games Arena
- Pool / Billiards
- Table Tennis
- Yoga & Meditation Hall
- Aerobics / Kickboxing Studio

ENTERTAINMENT & LEISURE

- Welcome Lounge
- Party Hall
- Salon & Spa
- Home Theatre
- Cloud Kitchen

EDUCATIONAL & LEARNING

- Library
- Creche
- Children's Hobby Room
- Co-working Area / Work-From-Home Zone
- Conference Room

ZONE - 5

ROOFTOP AMENITIES

- Sky Gazing Lounge



SPACIOUS FLOOR PLANS, WELL-THOUGHT SPACES

TYPICAL FLOOR PLAN



— UNIQUE IN MORE WAYS THAN ONE. —



8 Ft. Grand Doors



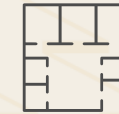
Expansive Corridors –
12 Ft., 10 Ft. & 8 Ft. Wide



6 High-Speed Elevators
(4 Passenger + 2 Service Lifts)



Premium 5'9" Window Height for
Enhanced Natural Light & Ventilation



Thoughtfully Planned & Highly
Efficient Floor Layouts



Designed in Consultation with
Renowned Vaastu Experts



Breathtaking Views from
Every Balcony



10.56 Ft. Floor-to-Floor Height for
Enhanced Spatial Volume



800 x 800 mm Double-Charged
Vitrified Flooring



Superior A-Grade
Construction Materials



Provision for Advanced VRV/VRF
Air-Conditioning System

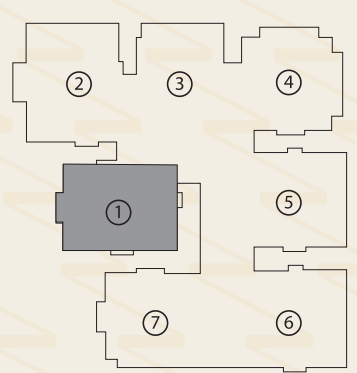


Spacious & Well-Ventilated
Bathrooms

APARTMENT PLAN - UNIT 1

3.5 BHK Residence - North Facing

- 3 Bedrooms • 3 Bathrooms
- 1 Multipurpose Room • 2 Private Balconies



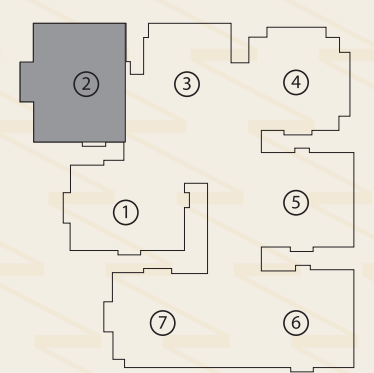
2594 SFT
(NORTH FACING)



APARTMENT PLAN - UNIT 2

4 BHK Residence - East Facing

- 4 Bedrooms
- 4 Bathrooms • 3 Private Balconies



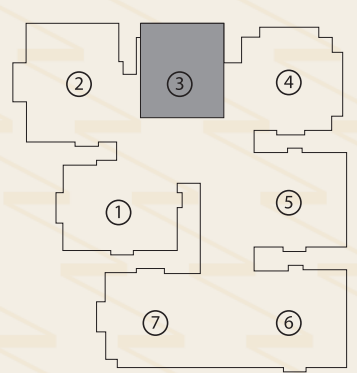
2945 SFT
(EAST FACING)



APARTMENT PLAN - UNIT 3

3 BHK Residence - East Facing

- 3 Bedrooms
- 3 Bathrooms • 1 Private Balcony



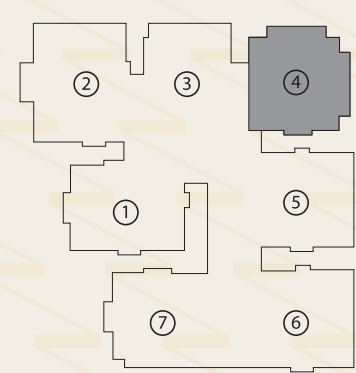
2032 SFT
(EAST FACING)



APARTMENT PLAN - UNIT 4

3 BHK Residence - West Facing

- 3 Bedrooms
- 3 Bathrooms • 2 Private Balconies



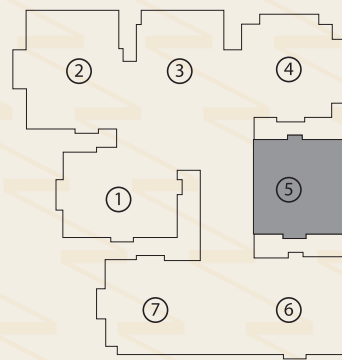
2405 SFT
(WEST FACING)



APARTMENT PLAN - UNIT 5

3 BHK Residence - West Facing

- 3 Bedrooms
- 3 Bathrooms • 2 Private Balconies



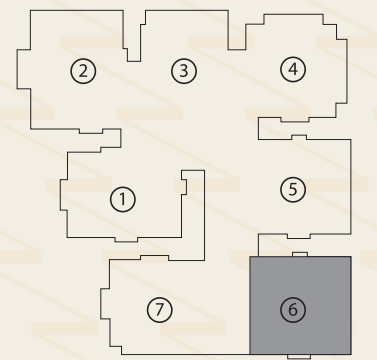
2457 SFT
(WEST FACING)



APARTMENT PLAN - UNIT 6

3 BHK Residence - West Facing

- 3 Bedrooms
- 3 Bathrooms • 2 Private Balconies



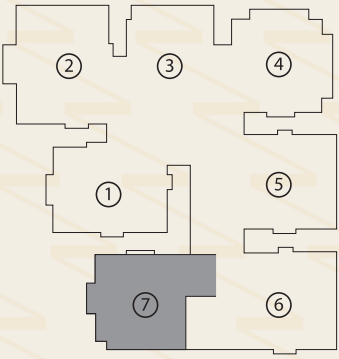
2529 SFT
(WEST FACING)



APARTMENT PLAN - UNIT 7

3 BHK Residence - East Facing

- 3 Bedrooms
- 3 Bathrooms • 3 Private Balconies



2571 SFT
(EAST FACING)



PROJECT SPECIFICATIONS

STRUCTURE

- R.C.C. FRAMED STRUCTURE
- R.C.C. Shear Wall Framed Structure designed to withstand Wind & Seismic Loads.

PAINTING / WALL FINISHES

- EXTERNAL FINISHING**
- Texture finish with exterior emulsion paint of reputed make, as per architectural intent.
 - Corridors and Staircases: Smoothly finished with Putty and acrylic emulsion paint of reputed make.
- CEILING FINISHES**
- Corridors and Lift lobbies - False ceiling as per design, smoothly finished with putty and acrylic emulsion paint of reputed make.
- INTERNAL**
- Smoothly finished with putty and 2 Coats of Premium Acrylic Emulsion Paint of Reputed make.

DOORS

- MAIN DOOR**
- Manufactured Teak Veneered Door Frame & Shutter of 8 ft (H) x 3 ft 9 In (W), finished in Melamine Polish with Hardware of Reputed Make
- INTERNAL BEDROOM**
- Manufactured Hard Wood Door Frame & Laminate Shutter of 8 ft (H) x 3 ft 3 In (W) with Hardware of Reputed Make
- BATHROOMS**
- Manufactured Hard Wood Door Frame & Laminate Shutter of 7'6\"/>
- UTILITY DOOR**
- UPVC Frame and shutter of 7'6\"/>
- FRENCH DOOR**
- UPVC Shutters and Frame of Reputed make, with Toughened / HS Glass of Reputed Make with provision for Mosquito Mesh

WINDOWS FRAME & SHUTTER

- WINDOWS**
- UPVC Windows of Reputed make with Toughened / HS Glass with Mosquito mesh. (Mesh will not be provided for casement windows)
- GRILLS FOR WINDOWS**
- Aesthetically Designed, Mild Steel (M.S) Window grills with Enamel paint finish. (Shall be provided at Extra cost)
- BALCONY RAILINGS**
- MS / Cast Iron / Glass Railing of reputed make as per elevation.

FLOORING

- DRAWING, LIVING, DINING, KITCHEN, MULTIPURPOSE HALL**
- 800x800 mm size Double charged Vitrified Tiles of Reputed Make.
- ALL BED ROOMS**
- 800x800 mm size Double charged Vitrified Tiles of Reputed Make.
- TOILETS AND UTILITY**
- Acid Resistant, Anti-Skid Vitrified Tiles of Reputed Make.
- BALCONIES**
- Anti Skid Vitrified Tiles of Reputed Make.
- ENTRANCE LOUNGE**
- Granite/Marble flooring

TILE CLADDING

- DADOING IN KITCHEN**
- Customer Scope
- BATHROOMS**
- Glazed Vitrified Tiles upto 8' Height of Reputed Make.
- UTILITY**
- Glazed Vitrified Tiles Dado upto 4' Height of Reputed Make.

KITCHEN / UTILITY

- COUNTER**
- Granite platform and sink - Customer scope.
- WATER PROVISION**
- Separate Municipal Water provided by GHMC along with Borewell water.
- OTHER ACCESSORIES**
- Provision for fixing of Water Purifier, Exhaust Fan, or Chimney. Provision for Washing Machine, Dishwasher, Piped Gas

CP & SANITARY FIXTURES

- BATHROOMS**
- Single lever wall mixer with bath spout and shower of reputed make.
 - EWC with flush valve of reputed make.
 - Counter type wash basin.
 - Provision for geysers in all bathrooms.
 - All C.P. & Sanitary Fittings of reputed make.
- BATHROOM CEILING**
- Grid false ceiling in all bathrooms.

ELECTRICAL FIXTURES

- INTERNAL ELECTRICAL FIXTURES**
- 3 phase supply for each unit with individual meter boards
 - Concealed Copper Wiring and Switches of Reputed Make.
 - Power outlets for geysers in all bathrooms and utility.
 - Power outlets for Air Conditioners in all Bed Rooms & living rooms.
 - Space provision for VRV Unit system
 - Miniature Circuit Breakers (MCB) for each distribution board of reputed make.
- KITCHEN/UTILITY AREA**
- Power plug for Cooking Range, Chimney, Refrigerator, Microwave Ovens, Mixer / Grinders in Kitchen, Washing Machine, and dishwasher in Utility Area.

TELECOMMUNICATIONS, CABLE TV & INTERNET

- TELEPHONE POINTS**
- Telephone point in Drawing Room
- INTERCOM FACILITY**
- Intercom facility to all the units connecting Security
- CABLE TV**
- Provision for Cable Connection in Master Bed Room & Living Room.
- INTERNET**
- Provision for one Internet connection in drawing, living and all bedrooms.

ELEVATORS / LIFTS

- PASSENGER LIFTS SPECIFICATION**
- High-speed automatic passenger Lifts with rescue devices and V3F drive for energy efficiency, equipped with a reputed panic button, intercom, and CCTV inside the lift
- FIRE / SERVICE LIFTS SPECIFICATION**
- High-speed automatic passenger-cum-service lift with rescue devices and V3F drive for energy efficiency, equipped with a reputed panic button, intercom, and CCTV inside the lift
- LIFT LOBBIES CLADDING**
- Cladding with Marble / Granite / Tiles

WATER SUPPLY & SEWERAGE

- Domestic Water made available through an exclusive Water Softening Plant
- A Sewage Treatment Plant of adequate capacity as per norms will be provided inside the project, treated sewage water will be used for landscaping and flushing purposes.

CAR PARKING

- 2 Car Parks for each Apartment
- Entire parking is well designed with signages and equipment to suit the number of Car Parks and ease of traffic flow

POWER BACK UP

- 100% DG Set backup with acoustic enclosure & A.M.F

FIRE & SAFETY

- Fire hydrant and fire sprinkler system in all floors and basements as per NBC Norms.t