



Developers
SHREEJI CONSTRUCTION

Keystone 48, B/S. Nilamber Palms, Nr. Bright Day School (CBSE),
Vasna-Bhayli Road, Vadodara, Gujarat 391410

Phone: +91 7434 962 962 Email: keystone48@vihav.com



LOCATION



WEBSITE

www.vihav.com

CONNECT US @



Architect
PLACEKINESIS ASSOCIATES

Structural Consultant
ASHOK SHAH & ASSOCIATES

Plumbing Consultant
JAGRUTI DESIGNS

Electrical Consultant
BINDUBHATT & ASSOCIATES

PR/GJ/VADODARA/VADODARA/Others/MAA10436/A1M/191022 | RERA website: gujrera.gujarat.gov.in



KEYSTONE®



WHERE THE EXCLUSIVE IS

ORDINARY

4B2HK APARTMENTS & 5B2HK PENTHOUSES





THIS IS WHAT
UNMATCHED LUXURY
LOOKS LIKE

A POSSESSION
THAT'S RAREST OF
THE RARE

A PREMIUM PARADISE
WHERE COMPETITION
CEASES TO EXIST

An enchanting world where elusive experiences become daily routine. Where the generally luxurious seems ordinary because it's the extraordinary that you seek. Where your residences are like a work of art, precious few in number. Where you don't need to chase exclusivity because it is a way of life...



WHERE THE EXCLUSIVE IS ORDINARY

What is the most coveted luxury in an urbane lifestyle? Is it the highest comfort standards or extravagant amenities? Ultra-spacious abodes maybe or perhaps stunning landscapes across an impressive gated enclave? Well, we'd say it is all this but along with your own piece of nature, a covered personal foyer right outside your homes. And how do you get to it? A private elevator of course!

- | SUPER PRIME LOCATION
AT BHAYLI
- | ASSURED PRIVACY WITH
ONLY 1 OR 2 APARTMENTS PER FLOOR
- | PERSONAL FOYER
FOR EVERY HOME
- | ULTRA-SPACIOUS
4B2HK RESIDENCES
- | SIGNATURE
5B2HK PENTHOUSES
- | SMALL ELITE COMMUNITY
WITH LIKE-MINDED NEIGHBOURS
- | WORLD-CLASS LIFESTYLE
WITH PREMIUM AMENITIES
- | ASSURED QUALITY OF
THE REPUTED VIHAV GROUP





WHERE THE GREY MEETS THE GREEN

Keystone 48 is a seamless blend between the strengths of modernist architecture and the elements of contemporary design, generously peppered with nature's verdure. Built with exclusivity at the centre the project offers just two majestic towers with 13 habitable floors.

The earthy textures coupled with large format windows and balconies in every room ensure a pleasing exterior facade while allowing abundant natural light and ventilation into all residences. The linear placement of the towers helps them blend into the surrounding greenery and also assure more privacy.



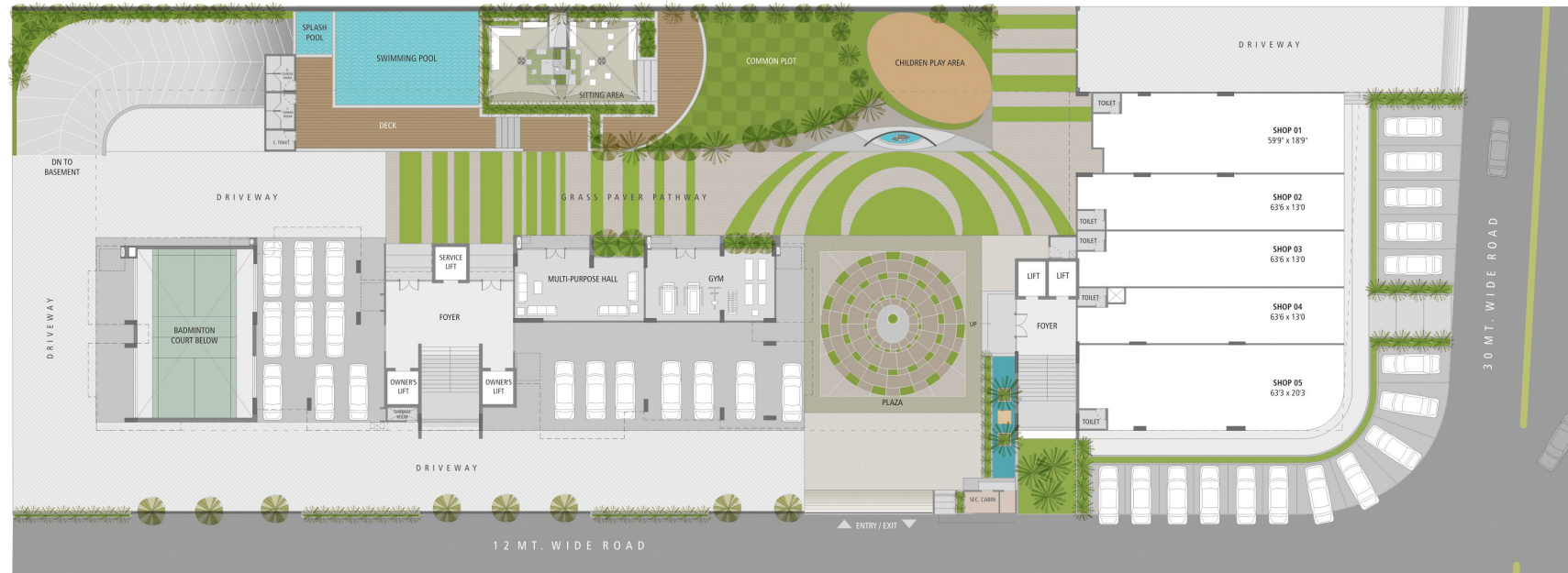
WHERE ARRIVALS ARE ARISTOCRATIC

Arrivals cannot get grander than this. A minimal yet sophisticated entrance lobby is a perfect prelude to your luxurious residences above. Plush interiors, spacious in size and pleasing to the eyes, this is an ideal space to greet your guests and treat them to a first glimpse of what lies ahead.

WHERE RECREATION IS ALSO A RESIDENT

Who will remember work week hustles when everyday ends like a weekend? At Keystone 48 we have handpicked the choicest leisure amenities and created a recreational paradise on the ground floor for you to enjoy with your loved ones. Don't blame us if your to-do lists extend beyond 6 PM every day!

GROUND FLOOR PLAN





SOAK IN THE DEPTHS OF LUXURY

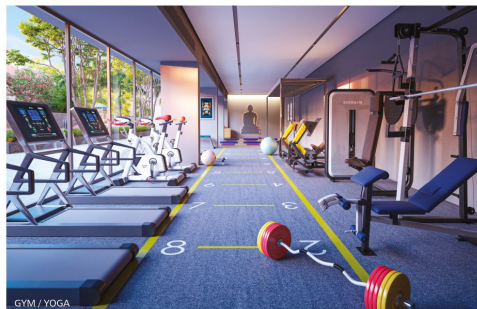
Swim, splash, dip, dive or simply relax
with your family at our swimming pool
with deck set in absolute privacy.



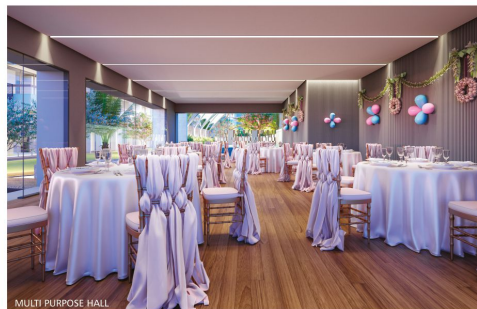
SIT, RELAX AND SOAK IN SOME SERENITY

Our Gazebo with wooden decks is
just the escape you need to catch up
with your neighbours' turned friends
or maybe enjoy a book.





GYM / YOGA



MULTI PURPOSE HALL



BADMINTON COURT & INDOOR GAMES (BASEMENT)



CHILDREN PLAY AREA



MAKE FITNESS A WAY OF LIFE

Stretch, lift, pump, crunch and practice yoga. Get fit and healthy at our state-of-the-art gymnasium.



FOR YOUR IMPROMPTU PARTY PLANS

Round up your family and friends and head straight to our multi-purpose room



ACE YOUR GAME PLAY

Top quality badminton court so you can enjoy a game of badminton with your friends or walk down to the indoor games room to indulge in a game of table tennis or billiards.



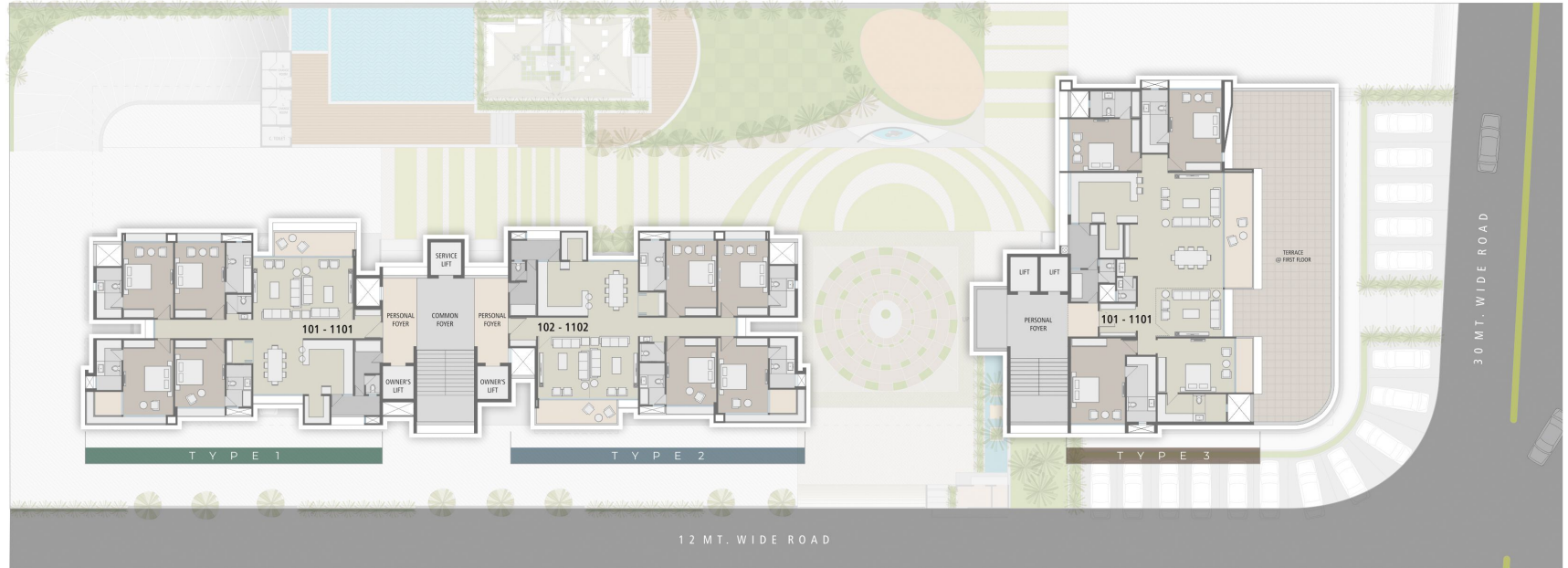
LET THEM RUN FREE

The children's play area is smartly placed next to the garden so that your kids can run wild and free while you watch them amidst your evening walk at our lush garden.

WHERE PLANNING MAKES LIFE RICHER!

Each of units at Keystone 48 are designed to optimise functionality, privacy and ease of living. Units on a floor aren't a mirror of the other unlike most other housing projects, instead subtle changes are done so as to maximise Vastu compliance for every unit on a floor.

TYPICAL
FLOOR PLAN





WHERE APARTMENTS FEEL LIKE VILLAS IN THE SKY

We know you like your home to be as unique as you. That's why our residences come in open formats allowing you to create interiors that suit your style.

The elegant 4B2HK apartments are built for indulgence. The living rooms lead into long balconies that offer mesmerizing views. The full height sliding doors render a unique spatial quality while bathing your homes in sunlight and natural breeze.

The living spaces flow into the dining area and kitchen while offering the required privacy to the bed rooms.



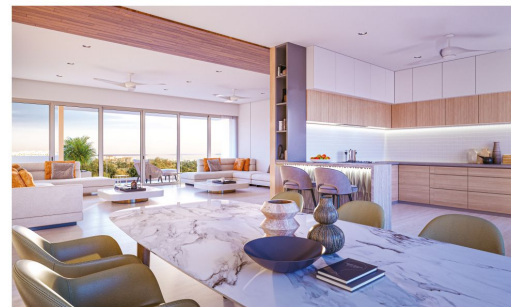
SPACIOUS
APARTMENTS

ATTACHED SERVANT
QUARTERS

OPEN TERRACE & LOUNGE
IN PENTHOUSES

ASSURED EXCLUSIVITY
PRIVACY

PREMIUM FITTINGS AND
FIXTURES





T Y P E 1

TYPICAL UNIT PLAN



T Y P E 2

TYPICAL UNIT PLAN

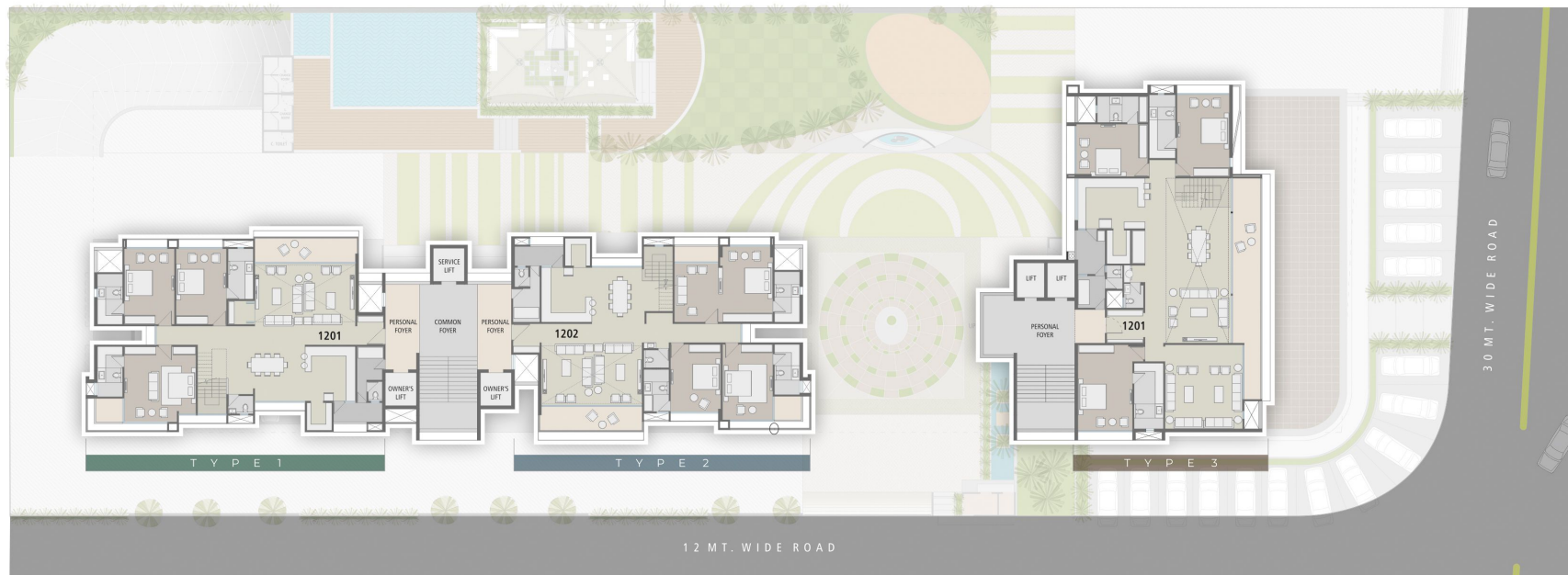


T Y P E 3

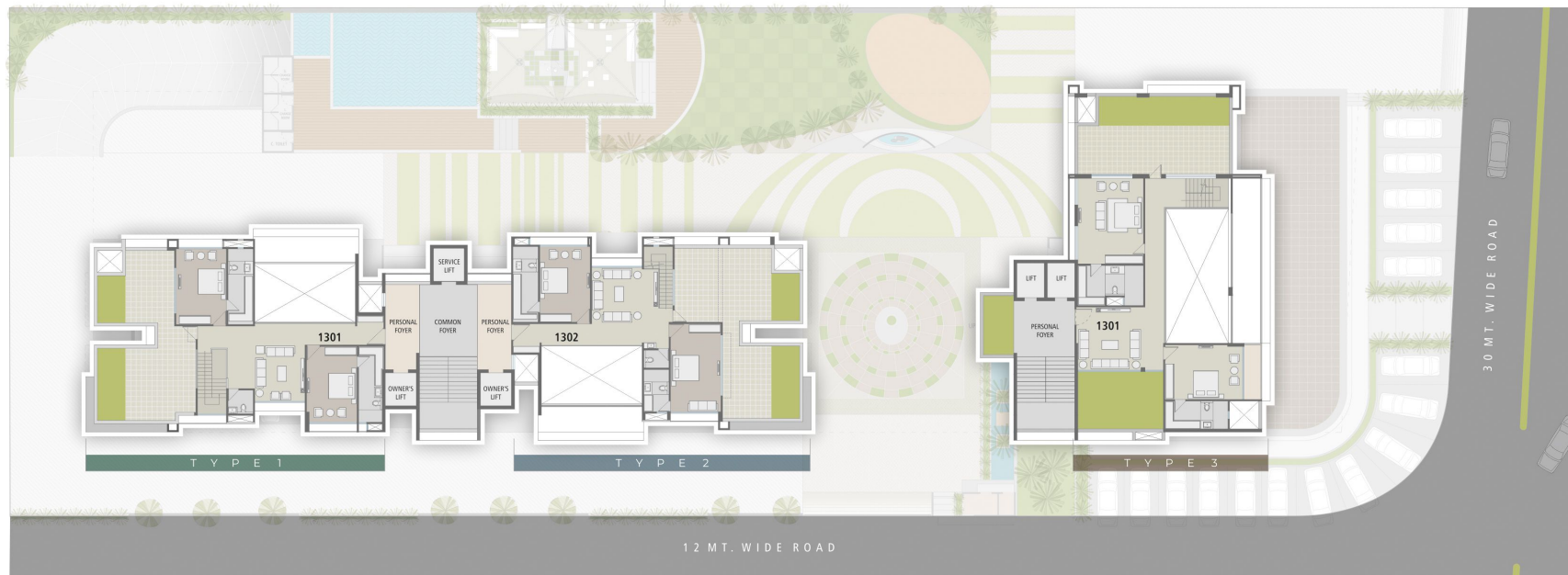
TYPICAL UNIT PLAN



PENTHOUSE
(LOWER LEVEL)



PENTHOUSE
(UPPER LEVEL)





WHERE ABUNDANCE IS IN EVERY DETAIL

The 5B2HK penthouses are a world in themselves. Step out of your personal elevator into a large private foyer that greets you as you enter your mansion in the sky. You can easily transform this space into your own private garden or maybe a mini forest if you may like.

5 lavish bedrooms spread across two levels, double height ceiling in living rooms, large private terraces for all your parties and peaceful escapes. Extravagant in every sense.



T Y P E 1

PENTHOUSE (LOWER)



T Y P E 1

PENTHOUSE (UPPER)



T Y P E 2

PENTHOUSE (LOWER)



T Y P E 2

PENTHOUSE (UPPER)



TYPE 3

PENTHOUSE (LOWER)



TYPE 3

PENTHOUSE (UPPER)





Earthquake Resistant RCC Frame Structure.
High Quality block missionary with plaster
(Except Ceiling).



Italian floor in living, kitchen and dining.
Double Charged High Quality Vitrified
Tiles in remaining rooms.



Designer Ceramic Tiles in all Bathrooms up to Lintel Level.
Natural/ Artificial Premium Counter for Basins.
Kohler/ ROCA or equivalent CP Fittings & Sanitary.



Natural/ Artificial Premium Stone Platform with Quartz Sink.
Designer Ceramic Tiles Dado above Kitchen Platform Up to 2Ft.
Wash Area with Ceramic Tiles Dado & Natural Stone Floor.

Main Door: High Quality Wooden frame, door with Veneer Panelling.
Internal Doors: Wooden frame with Veneered flush doors.
Slider Windows: High Quality Powder Coated Heavy Aluminium / UPVC Sections.
Internal Mala Plaster with Putty/ Primer Finish.
Exterior Paints with Texture Finish.
Concealed Copper ISI wiring. MCB/ELCB & premium modular switches.



Your address will surely become a landmark at Keystone 48. Located at Bhayli, you will be surrounded by some of the most prestigious projects of the city. The premium neighbourhood ensures that you will have ample clear space between buildings allowing for lifetime views. Needless to say all lifestyle utilities are close by and so are all major parts of the city.

