



**BRINGING LIFE
TO SPACES**

Built with
expert care.



Krishna Kunj

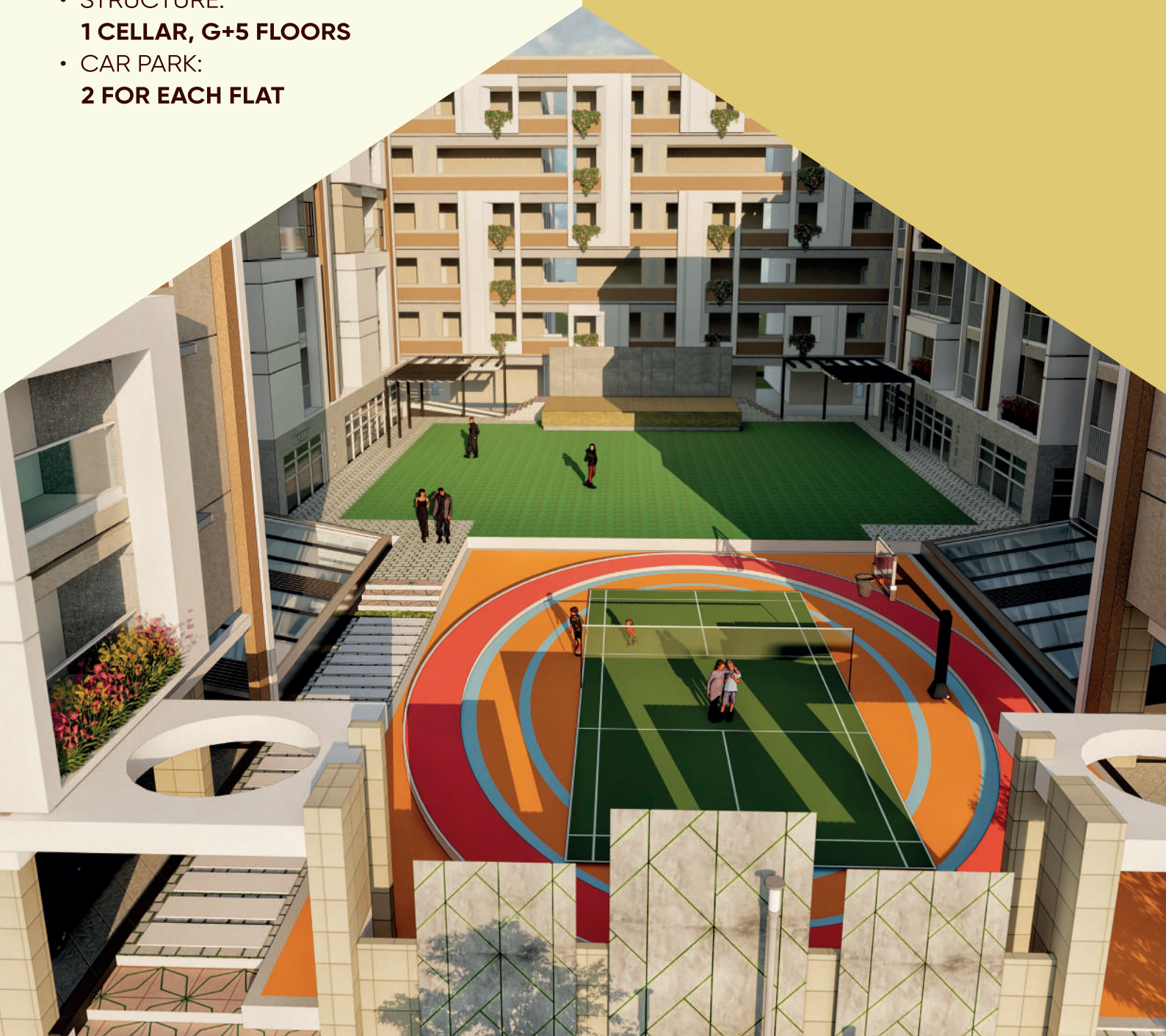
Central Courtyard

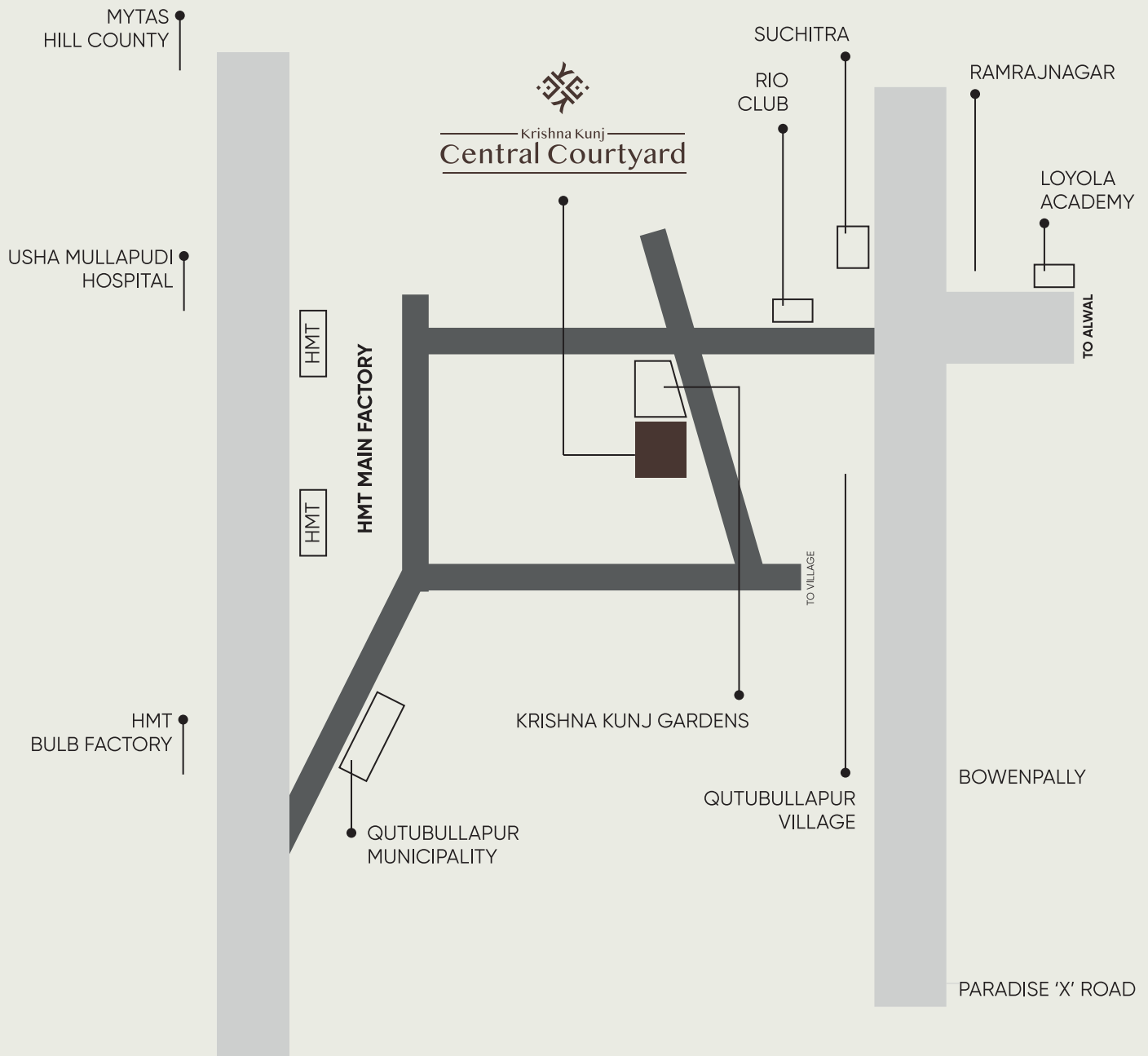
PROJECT OVERVIEW

- LAND EXTENT:
9000 SQ.YDS
- SANCTIONING AUTHORITY:
GHMC
- PROJECT THEME:
CENTRAL COURTYARD
- POPULATION DENSITY:
MINIMAL (NON HIGH-RISE BUILDING)
- NO OF FLATS:
130
- FLATS FORMAT:
3BHK & 4BHK
- FLATS SIZE RANGE:
1665 TO 2115 SFT
- STRUCTURE:
1 CELLAR, G+5 FLOORS
- CAR PARK:
2 FOR EACH FLAT

9000
SQ. YARDS

130
FLATS





**GET
ANYWHERE
IN A SNAP**

LOCATION HIGHLIGHTS

- REPUTED EATERIES AND SHOPPING COMPLEXES: **10 MINUTES, 3KM**
- RUSSH SUPER SPECIALITY HOSPITAL: **10 MINUTES, 2.7KM**
- SUCHITRA ACADEMY INTERNATIONAL SCHOOL: **6 MINUTES, 2KM**
- JUBILEE BUS STATION: **20 MINUTES, 9.9KM**
- HYDERABAD PUBLIC SCHOOL, BEGUMPET: **27 MINUTES, 9.9KMS**
- PARADISE CIRCLE: **30 MINUTES, 9.7KM**
- KANDLAKOYA IT PARK: **33 MINUTES, 15KM**
- JUBILEE HILLS CHECK POST: **40 MINUTES, 16KM**
- HITEC CITY: **47 MINUTES, 16KM**
- KUKATPALLY: **31 MINUTES, 10KM**



KRISHNA KUNJ CENTRAL COURTYARD IS A WELL-THOUGHT-OUT DESIGNED SPACE THAT BRINGS IN POSITIVE ENERGY. IT IS AN EPITOME OF OPENNESS, PEACEFULNESS AND INCLUSIVENESS NESTLED IN MIDST OF ALL ACTION.

WELCOME TO THE WORLD OF SPARSELY POPULATED GATED COMMUNITY.

PROJECT SPECIFICATIONS

S.NO.	ITEM	DESCRIPTION
1	STRUCTURE	<ul style="list-style-type: none"> • RCC Framed Structure (Cellar, Ground Plus Five floors) • 9" Thick Red Clay Bricks with thermacol insulation for external walls • 4" Thick Red Clay Bricks for internal walls
2	PLASTERING	<ul style="list-style-type: none"> • Internal & External Walls with 2 Coats of Plastering with Sponge Finish
3	DOORS / WINDOWS	<ul style="list-style-type: none"> • Main Door: Manufactured engineered veneered door frame & shutters with reputed hardware fittings finished with Polish, Godrej locks or equivalent brand • Internal Door: Granite Door Frames & designer shutters with reputed hardware fittings finished with Godrej locks or equivalent brand • French Door (if any): Frames of UPVC make of reputed brand for frames and shutters with float glass • Windows: Frames of UPVC make of reputed brand and shutters with float glass along with Mosquito mesh track
4	PAINTING	<ul style="list-style-type: none"> • External: Texture / Smooth Finish with 2 coats of exterior emulsion paint of reputed make. • Internal: Smooth Putty Finish with 2 coats of premium acrylic emulsion paint of reputed make over a coat of primer
5	FLOORING	<ul style="list-style-type: none"> • Living, Dining, Drawing, Bedrooms, & Kitchen: Premium Vitrified Tiles of reputed make. • Bathrooms: Antiskid Vitrified Tiles of reputed make • Utility: Ceramic / Vitrified of reputed make • Staircase & Corridors: Granite / Anti-Skid Vitrified Tiles • Parking & Driveways: VDF (Vacuum Dewatered Flooring)
6	TILE CLADDING	<ul style="list-style-type: none"> • Bathrooms: Dado upto lintel height using Glazed ceramic/vitrified tiles of reputed make • Utility: Ceramic Tiles dado upto 5'0" height
7	KITCHEN	<ul style="list-style-type: none"> • Provision for fixing of water purifier, chimney & exhaust • Supply of Drinking water & Bore water
8	BATHROOMS	<ul style="list-style-type: none"> • White Colour Wall Mounted EWC & White Colour Bracket Mounted Wash Basins with taps of reputed make • Hot and Cold Wall Mixer with shower of reputed make • Provision for Geysers in all toilets. • One Bracket Mounted White Wash Basin in Dining area
9	ELECTRICAL	<ul style="list-style-type: none"> • Concealed Copper Wiring of premium brand • Power Plugs for Geysers in all Bathrooms • Power point for Air Conditioner in all bedrooms. • Power plugs for cooking range, micro wave, oven mixer/grinder in kitchen. • Plug points for refrigerator, washing machine. • Miniature Circuit breakers (MCB) for each distribution board. • Modular Switches of reputed make • Power Back-up for at least 3 Light Points & 3 Fan Points in each Flat
10	PLUMBING	<ul style="list-style-type: none"> • CPVC pipes (Aashirwad or Astral or equivalent), Sudhakar or Prince PVC sanitary pipes will be used for water supply and sewerage lines
11	TELEPHONE	<ul style="list-style-type: none"> • Telephone points in Drawing & Master Bedroom • Intercom facility for all Flats
12	CABLE TV	<ul style="list-style-type: none"> • Provision for Cable TV Points in Drawing, Living and all Bedrooms
13	LIFTS	<ul style="list-style-type: none"> • 4 Nos 6-Passenger Lifts of reputed make
14	SECURITY	<ul style="list-style-type: none"> • Surveillance Cameras at strategic locations



ONLY THE BEST

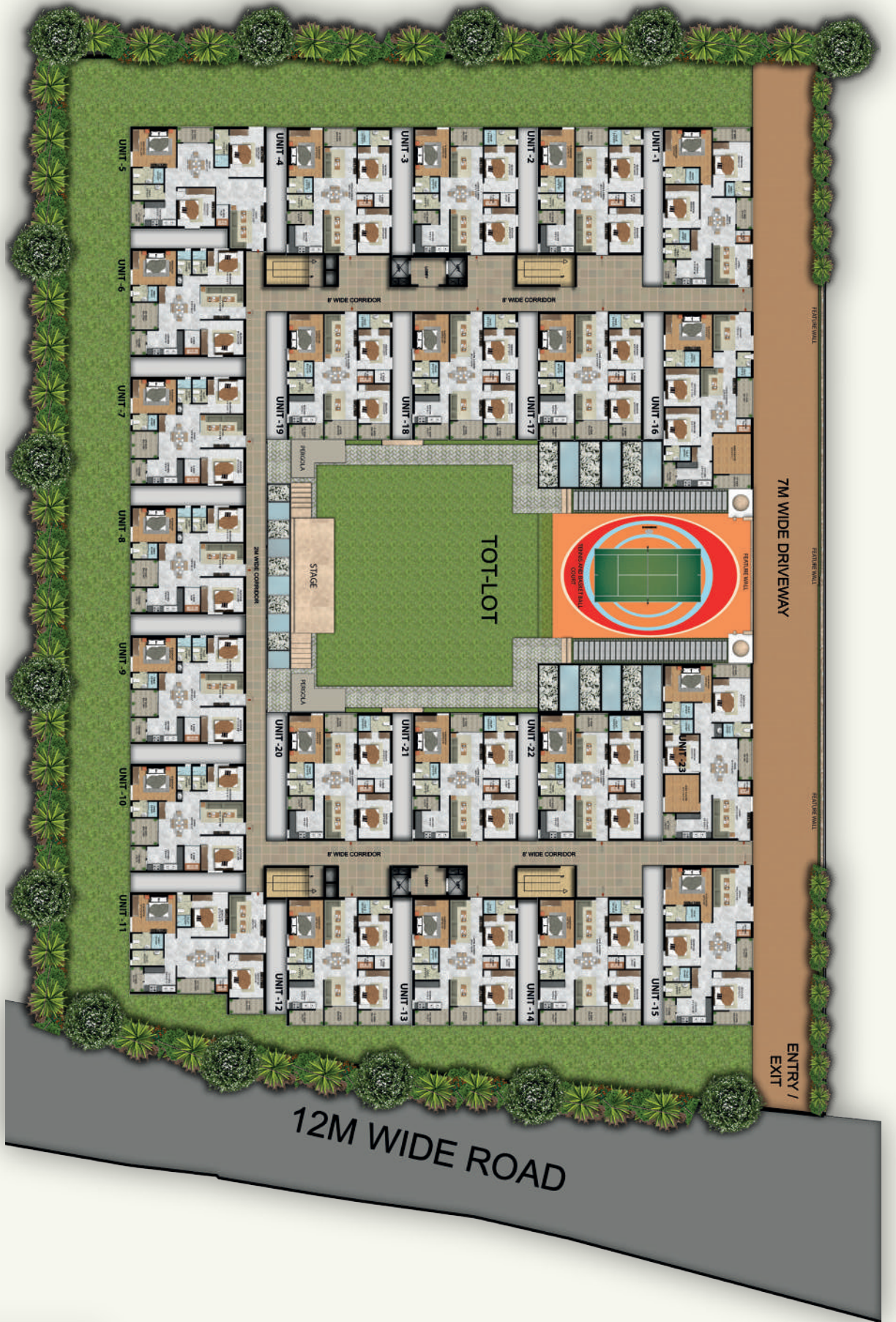
AMENITIES

- GRAND CENTRAL COURTYARD
- GRAND ENTRANCE LOBBIES
- BADMINTON COURT
- BASKETBALL COURT (HALF)
- CHILDREN PLAY AREA
- BANQUET/ CONFERENCE/ BOARD ROOMS
- INDOOR GAMES ROOM
- CRÉCHE AREA
- AEROBICS/YOGA/ MEDITATION HALL
- WALK/JOG/CYCLE TRACK
- DESIGNER HARD LANDSCAPING IN 7 METER DRIVEWAYS
- INDOOR FITNESS STATION
- OPEN AIR GYMNASIUM
- KIDS POOL





GROUND FLOOR PLAN



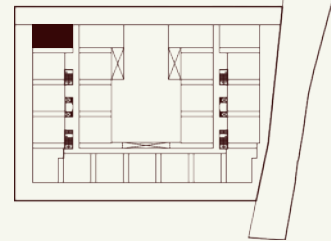
TYPICAL FLOOR PLAN

HOUSE PLANS



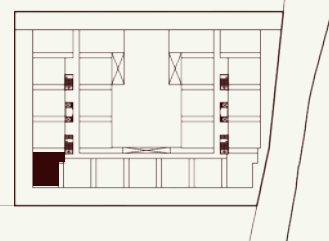
1910 SQ. FEET
EAST FACING
3 BHK

KEY PLAN



1950 SQ. FEET
EAST FACING
3 BHK

KEY PLAN

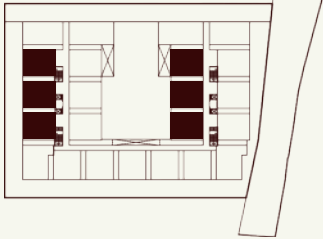


HOUSE PLANS



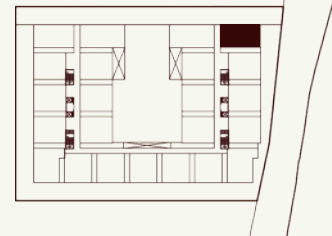
1795 SQ. FEET
EAST FACING
3 BHK

KEY PLAN



1910 SQ. FEET
WEST FACING
3 BHK

KEY PLAN

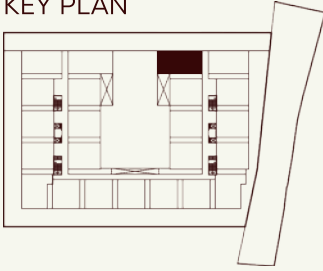


HOUSE PLANS



HOUSE PLANS

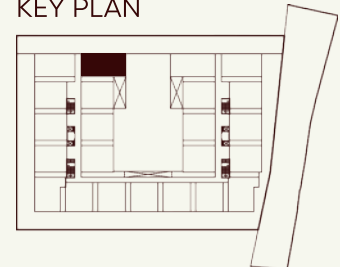
KEY PLAN



2115 SQ. FEET
EAST FACING
4 BHK



KEY PLAN

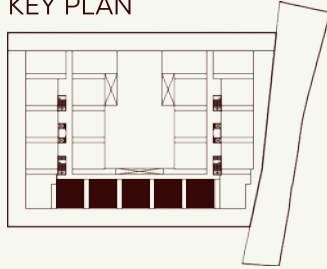


2115 SQ. YARDS
WEST FACING
4 BHK



HOUSE PLANS

KEY PLAN



ENTRY



1665 SQ. FEET
NORTH FACING
3 BHK

A project by



REGALIA SMARTSPACES LLP

Bringing Life to Spaces

H.No. 4-31/1/1A, Vision Square, 1st Floor, Sy.No.3-D,
Thumkunta Municipality, Shamirpet Mandal,
Medchal-Malkajgiri District, Telangana, India - 500078,

regalia.smartspaces@gmail.com

www.regaliasmartspaces.com

For Enquiries: +91 97015 12345

Scan to visit our site:



ARCHITECTS:



STRUCTURAL ENGINEERS:

Alonum Design
Structural Consultants

PMC:



LANDSCAPE CONSULTANTS:



TS RERA No: P02200005484

Note: This brochure is purely a conceptual presentation and not a legal offering.
The promoters reserve the right to make changes in elevation, specifications and plans as deemed fit.