

Krishé pearl

📍 Opp. to Meridian School
Chengicherla - Uppal



Premium Gated Community with 35+ Amenities



6.1 Acres



3 Towers



690 Units



G + 9 floors



25,000+ Sft.
Clubhouse

www.krishepearl.com

📞 +91-834-834-6000

MASTER LAYOUT

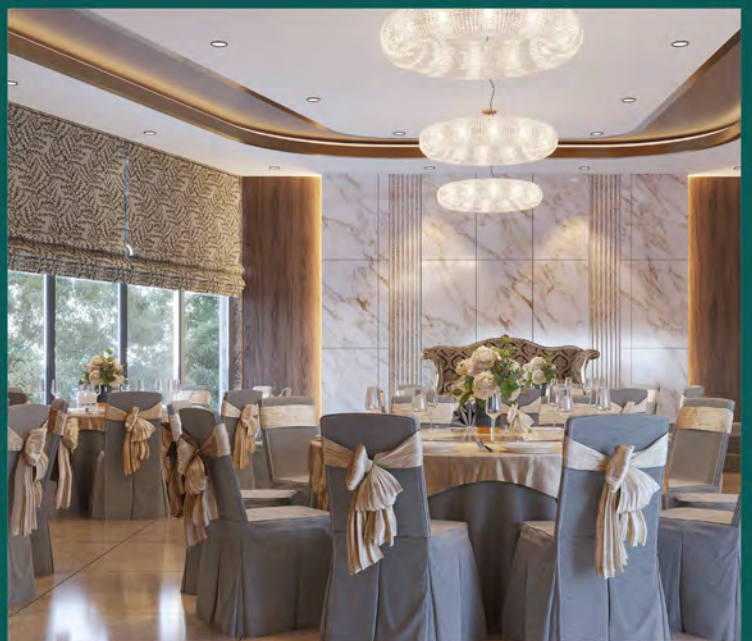


-  SWIMMING POOL
-  YOGA
-  GYM
-  BANQUET HALL
-  INDOOR BADMINTON COURT
-  SPA
-  INDOOR GAMES
-  CRÈCHE
-  SUPER MARKET & PHARMACY
-  GUEST ROOMS

- Entry Plaza with Security Cabin
- Pedestrian Entry to Clubhouse
- Jogging Track
- Bicycle Lane
- Barbeque Area
- Tower Entry Plaza
- Pool Deck
- EV Charging Point
- Drivers Waiting Lounge
- 100% DG Backup

- Swimming Pool with kid's pool
- Coffee Shop
- Picnic Lawn
- Amphitheatre
- Car wash area
- Butterfly Garden & Therapeutic Garden
- Paddle ball
- Association Office Room
- Bus Bay
- Visitors Parking area

- Half Basket Ball Court with Gallery Seating
- Children's Play Area
- Trampoline Park
- Floor Games
- Shade Structure with Wi-Fi-connectivity
- Pet Park
- Yoga/meditation Deck
- Emergency Room
- Sr. Citizen Zone
- Ambulance parking Area



FLOOR PLAN



1349 Sq. Ft.
2Bhk East Face

Tower A
Units 16-19
Units 25-31

Tower B
Units 07-14

Tower C
Units 10-12

Carpet Area	863.00 Sq. Ft.
Balcony Area	69.00 Sq. Ft.



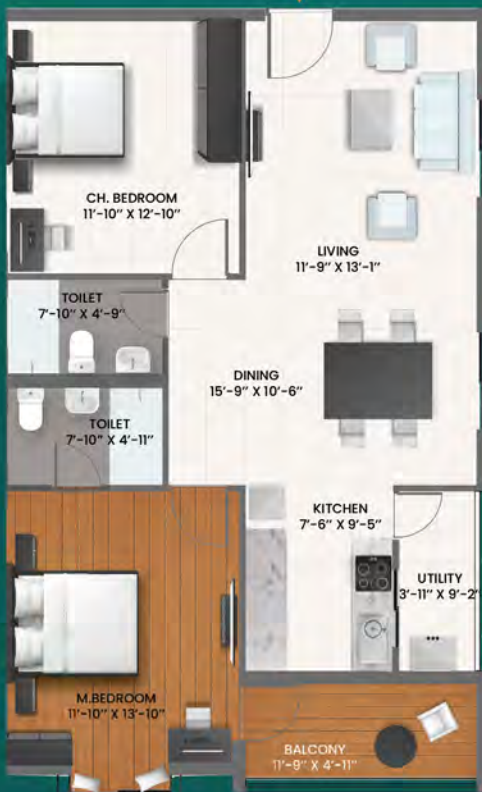
1349 Sq. Ft.
2Bhk West Face

Tower A
Units 01-07
Units 20-24

Tower B
Units 02-06

Tower C
Units 02-05

Carpet Area	863.00 Sq. Ft.
Balcony Area	69.00 Sq. Ft.



1325 Sq. Ft.
2Bhk North Face

Tower C
Units 14-16

Carpet Area	843.66 Sq. Ft.
Balcony Area	66.00 Sq. Ft.





1753 Sq. Ft.
3Bhk East Face

Tower B
Unit 15
Tower C
Units 20, 22, 24 & 26

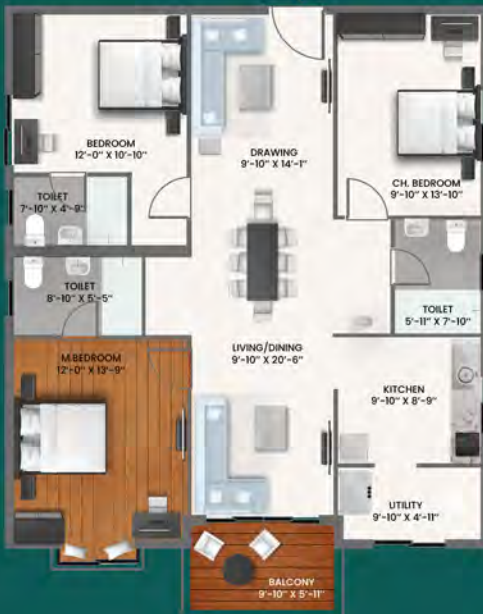
Carpet Area	1152.00 Sq. Ft.
Balcony Area	72.00 Sq. Ft.



1770 Sq. Ft.
3Bhk West Face

Tower B
Unit 01
Tower C
Units 01, 21, 23 & 25

Carpet Area	1165.00 Sq. Ft.
Balcony Area	71.00 Sq. Ft.



1750 Sq. Ft.
3Bhk North Face

Tower A
Units 08-15
Tower C
Units 06-09
Units 17-19

Carpet Area	1151.00 Sq. Ft.
Balcony Area	71.00 Sq. Ft.



SPECIFICATIONS

Structure

RCC Structured Frame work.

Walls

200mm thickness external walls & 100mm thickness internal walls.

Doors/Windows & Ventilators

Main Door	: Engineered wood / Hardwood frame with flush shutter fitted with reputed make hardware.
Internal Doors	: Engineered wood / Hardwood frame with flush shutter fitted with reputed make.
Toilet Doors	: Engineered wood frame with ISI mark Water proof Flush shutter fitted with reputed make hardware.
French Doors	: UPVC frames with sliding door with provision for mosquito mesh.
Windows	: UPVC windows with provision for mosquito mesh.

Flooring

Living /Kitchen	: 1200mmx600mm high quality vitrified tiles of reputed make.
Toilets / Utility	: 600mm x 600mm Anti-skid vitrified tiles of reputed make.
Corridors	: 1200mm x 600mm vitrified tiles.
All Bed Rooms	: 1200mmx600mm high quality vitrified tiles of reputed make.
Balcony	: 195 mm x 1200 mm wood finish vitrified tiles.

Tile Cladding

Toilets	: Vitrified tiles dado up to 8 feet ceiling height of reputed make.
Utility Area	: Vitrified tile dado up to Balcony railing height of reputed make.
Kitchen	: Platform & Sink with vitrified tile dado above kitchen platform (optional).

Painting

External	: Weather proof texture paint.
Internal	: Two coats of premium emulsion paint with smooth Finish.

CP & Sanitary Fixtures

- All toilets are fitted with wall mounted EWC with concealed flush valve of reputed make.
- All C.P. Fittings and sanitary fixtures are of reputed make.
- Single lever wall mixer with shower of reputed make in all the bathrooms.
- Provision for Geysers and Exhaust fans in all bathrooms.

Electrical

- Concealed copper wire of reputed make
- Power outlets for Air Conditioners in MBR, GBR and Living / Drawing Room.
- Power outlets for Washing Machine, Dish washer, Mixer / Micro oven, Refrigerator, Water Purifier & Chimney.
- Modular switches of reputed make.
- Three phase power supply for each unit and individual Prepaid Dual Source Energy Meters for recording DG & EB Power consumption.
- 100% power backup for all flats, corridors & common areas
- Solar power panels will be installed as per the Government norms.
- Well illuminated energy efficient LED lighting for Lift Lobbies, Parking area & Corridors.

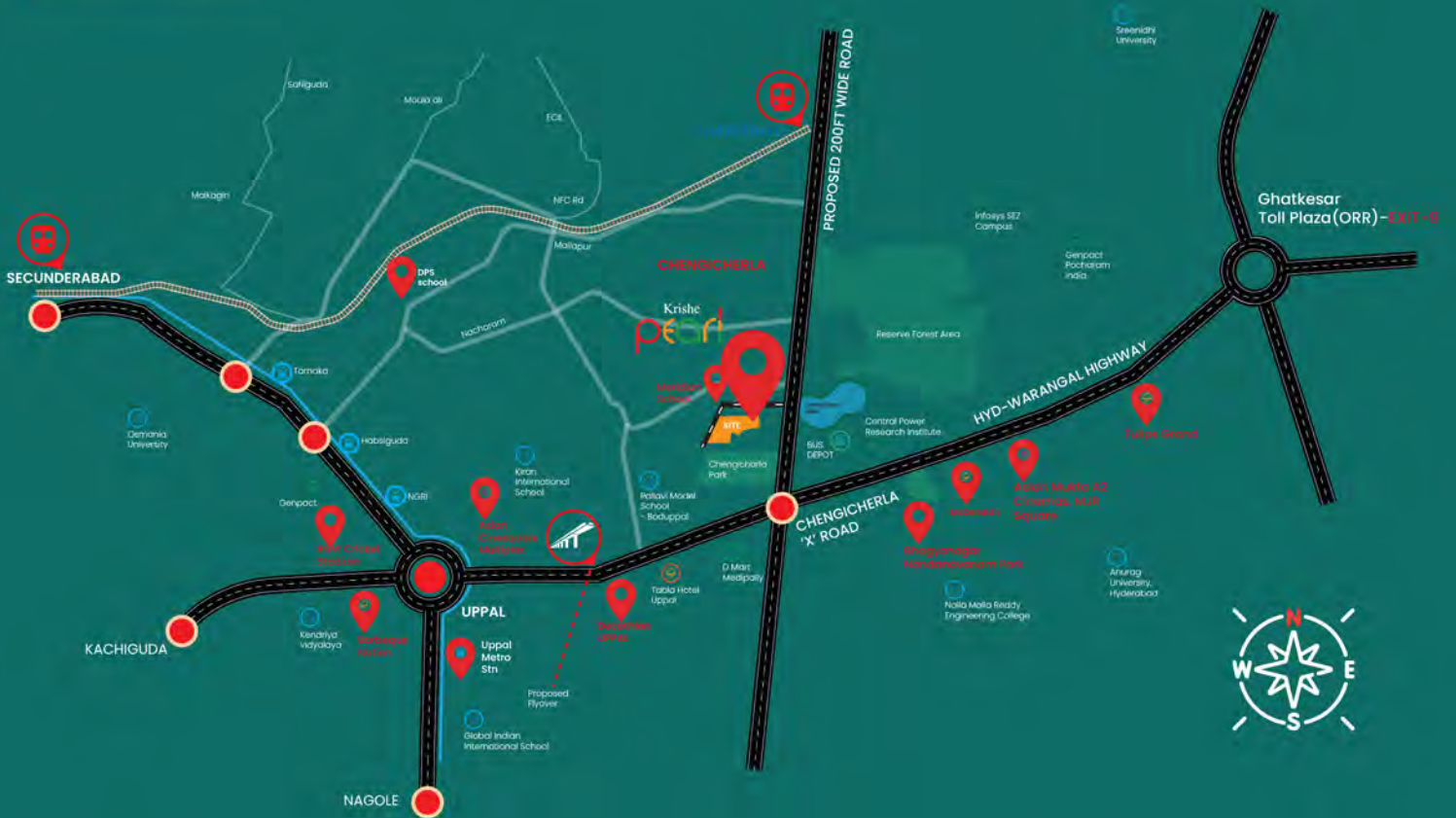
Telephone Points	: Telephone points in master bed room, drawing / living rooms.
Intercom Facility	: Intercom facility to all the units connecting security.
Cable TV	: Provision for cable connection in Master bedroom & living room.
Internet	: Provision for internet connection in each flat.
Passenger Lifts	: High speed automatic passenger lifts with Auto rescue devise with VVVF drive for energy efficiency of reputed make for each tower with CCTV Camera's inside the lift cabins.
Fire / Service Lifts	: High speed automatic passenger and service lift per block with Auto rescue device with VVVF drive for energy efficiency of reputed make for each tower with CCTV Camera's inside the lift cabins.
Centralized Billing	: Billing shall be done for consumption of electricity, DG, Water & Gas with prepaid meters system.
STP	: Sewage Treatment Plant of adequate capacity as per norms will be provided inside the project & Recycled water shall be used for flushing and landscaping works.
WTP	: Fully Treated water made available through exclusive Water Softening & Purification plant.
Fire & Safety	: Sprinklers in basements & wet risers in all floors shaft & basements (as per Fire Safety Authority regulations).
Car wash facility	: Provision for car wash facility at cellar parking area.
EV Charging Station	: Provision will be given at visitors parking area.

Security / BMS

- Sophisticated round-the-clock security / Surveillance System.
- Security for screening of visitors.
- Panic Button and intercom is provided in the lifts connected to security room.
- Surveillance cameras at the main security, entrance of each block, inside lifts, entrance of each lift in every floor and other important points to monitor.



SITE LOCATION



SCHOOLS

Meridian School	01 Min (100 m)
Sage International School	07 Mins (3.0 km)
Pallavi School	09 Mins (3.5 km)
SFS High School	10 Mins (5.0 km)
Siddharth Public School	13 Mins (4.6 km)
Kiran International School	15 Mins (4.8 km)
Global International School	15 Mins (5.0 km)
Nalla Malla Reddy College	19 Mins (9.0 km)
Kendriya Vidyalaya	25 Mins (7.3 km)
VBIT Engineering College	28 Mins (20.7 km)
Anurag College of Engineering	29 Mins (19.9 km)

ENTERTAINMENT

Asian Muktha Cinemas	12 Mins (5.9 km)
Asian Cinesquare	15 Mins (5.9 km)
RGIS Cricket Stadium	23 Mins (9.1 km)
DSL Virtue Mall	25 Mins (8.2 km)
Wonderla	40 Mins (38 km)
Ramoji Film City	45 Mins (38 km)

PARKS

Chengicherla Lake	02 Mins (1.0 km)
Reserve Forest Area	02 Mins (1.0 km)
Shantivanam Park	03 Mins (1.3 km)
Nandanavanam Park	06 Mins (3.5 km)

HOSPITALS

SRI SVS Hospital	05 Mins (2.3 km)
Kakathiya Hospital	07 Mins (2.8 km)
Pranitha Hospital	10 Mins (4.0 km)
Sirkara Hospital	10 Mins (4.0 km)
Save Hospital	13 Mins (4.1 km)
Prajwala Hospital	14 Mins (5.5 km)
Spandhana Hospital	14 Mins (3.8 km)
Spark Hospitals	15 Mins (4.6 km)
Ankura Hospital	15 Mins (4.5 km)

RESTAURANTS

Kritunga	05 Mins (2.6 km)
SVM Grand	05 Mins (2.6 km)
Absolute Barbecue	05 Mins (3.0 km)
Karachi Bakery	07 Mins (3.6 km)
McDonalds	10 Mins (5.0 km)
Hotel Tulips Grand	13 Mins (7.0 km)
Bikanervala	15 Mins (6.6 km)
KFC/Dominos	20 Mins (8.0 km)
Taaza Kitchen	25 Mins (14 km)
and many more...	

WORK PLACES

BEL	10 Mins (5.1 km)
Medha Servo	12 Mins (6.0 km)
Nacharam Industrial Park	15 Mins (6.2 km)
Mellon Technologies	17 Mins (6.2 km)
Govt. Sectors/Offices	17 Mins (6.0 km)
Infosys SEZ Campus	24 Mins (9.1 km)
NSL ARENA	25 Mins (9.2 km)
Genpact	28 Mins (10.9 km)

TRANSIT

Uppal Metro	10 Mins (9.0 km)
Charlapalli Rly terminal	13 Mins (5.0 km)
ORR	16 Min (9.5 km)
Secunderbad / Kachiguda Rly	30 Mins (15 km)
JBS Bus Stand	35 Mins (16 km)
MG Bus Stand	45 Mins (18 km)
RGIA	50 Mins (38 km)

TS RERA NO. P02200006236



SCAN FOR MORE DETAILS



Krishé

+91-834-834-6000

info@krishe.co

www.krishe.co

Site Office

Krishé Pearl
Chengicherla, Uppal,
Hyderabad - 500092,
Telangana, India

Head Office

Sri Krishna Ventures Pvt Ltd
Sri Krishna House, 3rd floor, Rd. 10,
Banjara Hills, Hyderabad - 500034,
Telangana, India

Disclaimer: This Brochure does not constitute an offer and/or acceptance and/or contract and/or agreement and/or transaction and/or any intention thereof and/or a disclosure under any statute of any nature whatsoever. The pictorial/other representation herein, the layout, number of buildings / towers/wings/structures, facilities and amenities are merely creative imagination and an Architect's impression and are only indicative. The actual product may vary/differ from what is indicated herein.