

**MEEN**  
**HEIGHTS**  
Tower A



**DEVELOPERS : ILYASBHAI ISMAILBHAI PATEL**  
**PROPRIETOR OF AAMIR ENTERPRISE**



## SPECIFICATIONS



### STRUCTURE

- ▶ Earthquake Resistant RCC Frame Structure as per Structure Engineer's Design.



### FLOORING

- ▶ High Quality 32" X 32" Vitrified tiles.
- ▶ Anti Skid flooring in Wash Area.



### BATHROOMS

- ▶ Sanitary ware and C. P. Fitting standard Quality.
- ▶ Designer wall Tiles in all Bathrooms up to Ceiling Level.



### KITCHEN

- ▶ Granite Platform with S. S. Sink.
- ▶ Glazed Tiles up to Lintel.



### WALL FINISH

- ▶ Interior : Cement Based Putty with Primer.
- ▶ Exterior : Double Coat Plaster with Weather Proof Quality Paint.



### ELECTRICAL

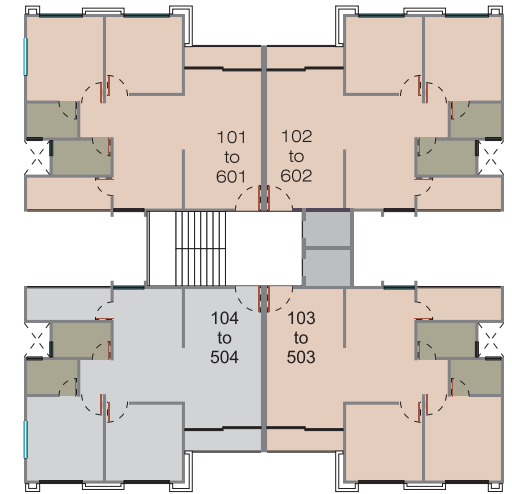
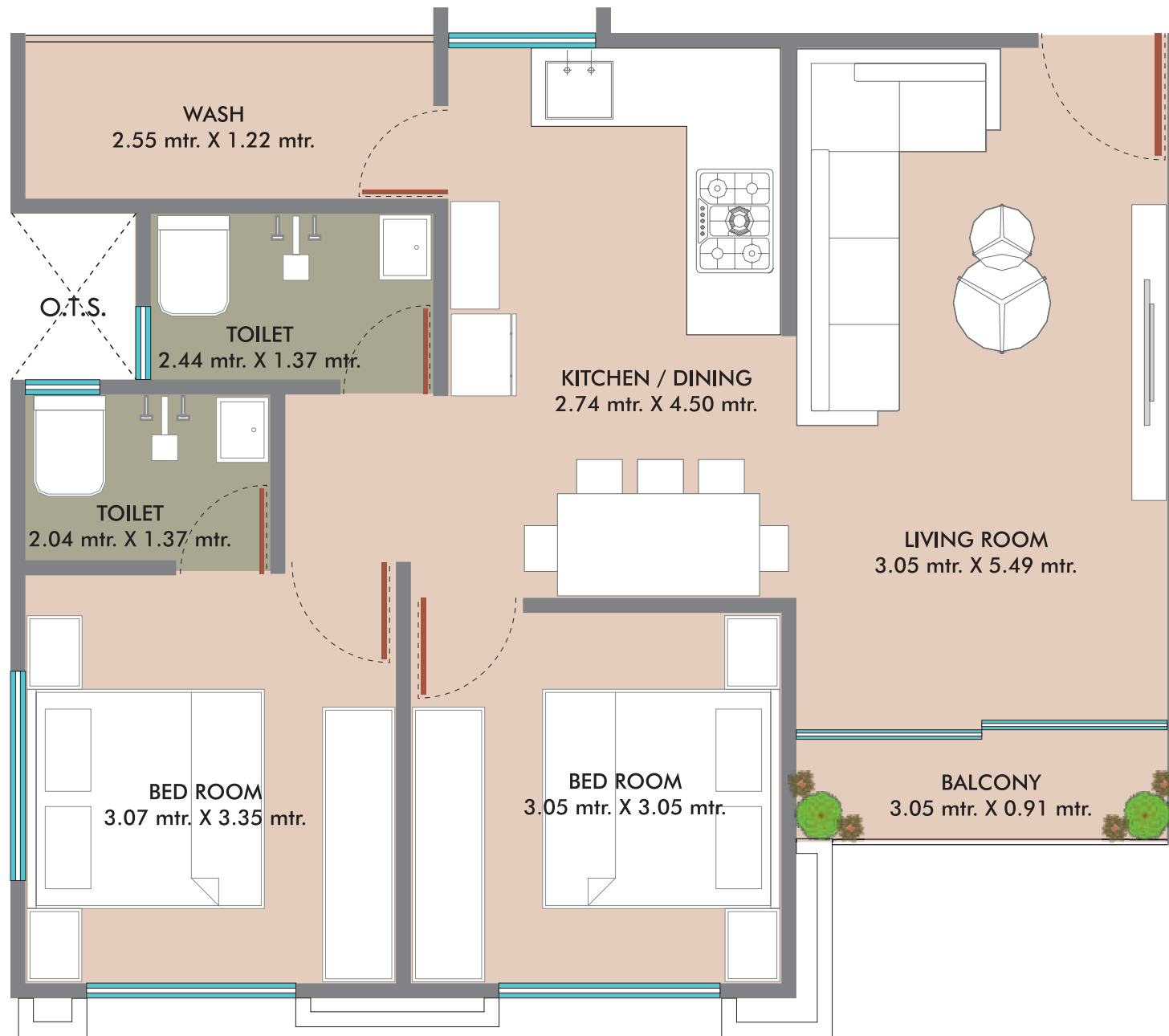
- ▶ Concealed Copper Wiring as per ISI Standard.
- ▶ Switches of Reputed Brand.
- ▶ Geyser Points in Bathrooms.
- ▶ 1 TV Points in Living Area.
- ▶ AC Points in Master Bed Room with Copper Pipe.



### DOORS & WINDOWS

- ▶ Main Door : Decorative main Door with Stone Frame & Safety Lock.
- ▶ Bedroom : Both side Laminated Flush Door with Safety Lock Stone Frame.
- ▶ Laminated Flush Door in Toilets & Wash with Stone Frame.
- ▶ Anodized Aluminium Windows with Stone Frame.
- ▶ Safety Grill in Windows.

**(TOWER - A)**



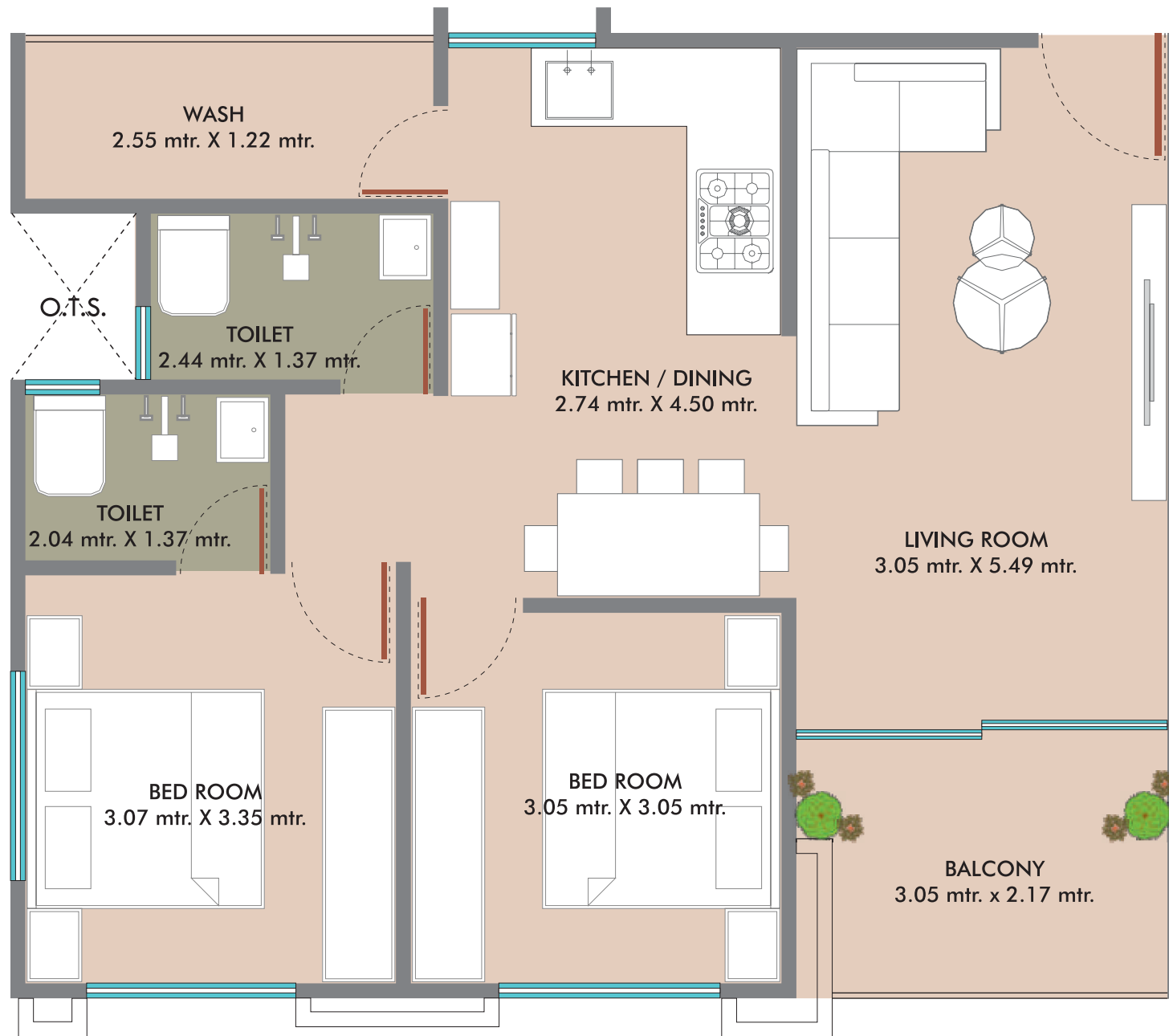
**Plan For**

- Flat No. 101 to 104**
- Flat No. 201 to 204**
- Flat No. 301 to 304**
- Flat No. 401 to 404**
- Flat No. 501 to 504**
- Flat No. 601 & 602**





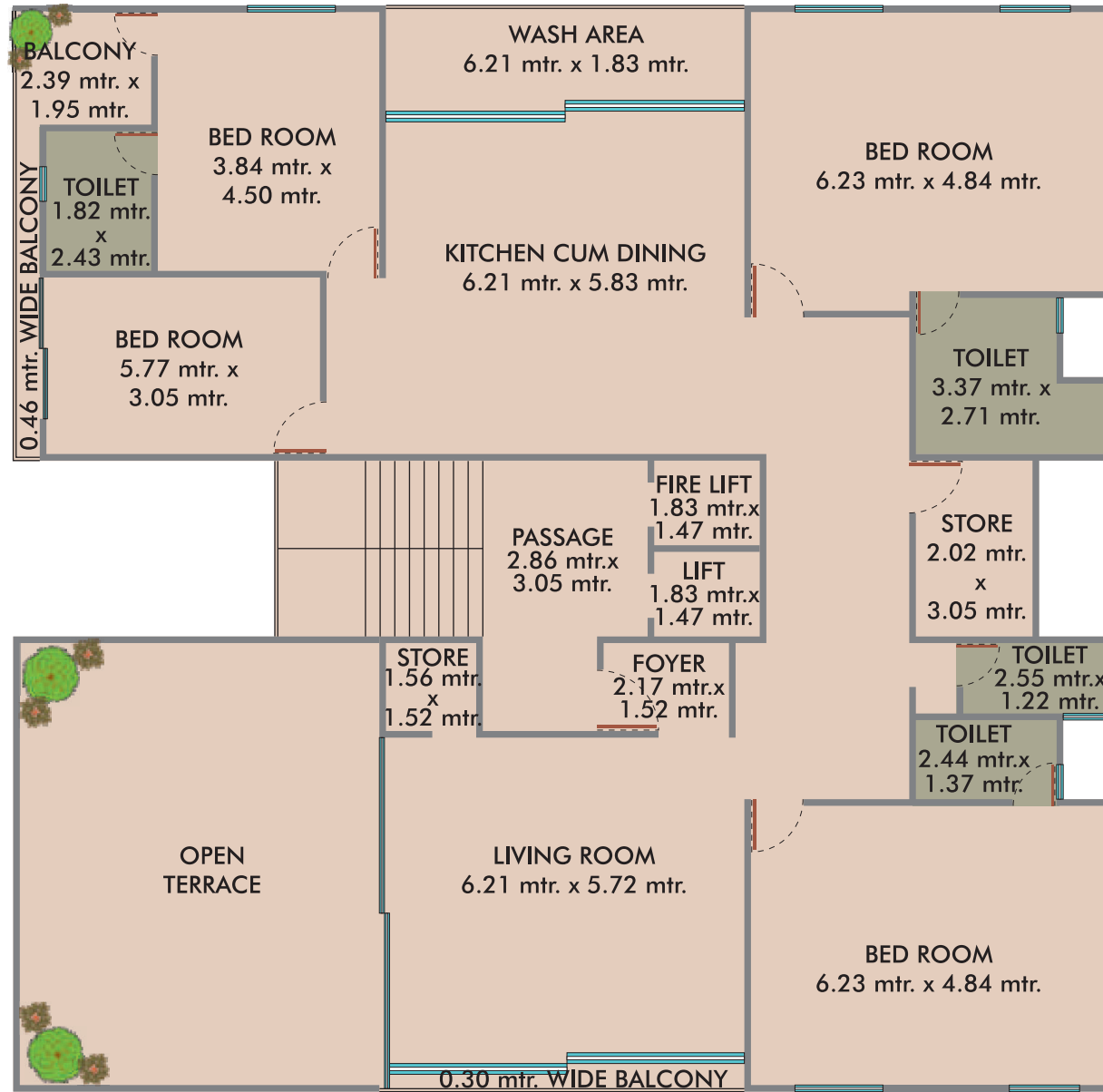
**(TOWER - A)**



**Plan For  
Flat No. 603 & 604**



**TOWER - A**  
**(7<sup>th</sup> FLOOR)**



**Flat No. 701**



## AMENITIES

- ▶ 19000 Sq. Ft. Garden
- ▶ Children Play Area
- ▶ Entry Gate
- ▶ Street Lights
- ▶ RCC Road
- ▶ CCTV Camera
- ▶ 24 Hours Water
- ▶ Lift & DG Power Backup
- ▶ Fire Safety System
- ▶ Water Harvesting System
- ▶ Security



## NOTES

- Documentation charge, stamp duty, all government taxes, G.E.B. meter deposit, shall be separate.
- Each member needs to pay maintenance shares separately.
- GST will be charge as per Rera.
- Customer has to pay House Tax from the date of issue Raja Chitthi.
- The developers reserve the full right to make any changes.
- In the case of booking cancellation 80% of the amount refund after booking of same flat.
- Extra work at the cost of client with prior estimate to be give in advance.
- Possession will be given after 30 days from the receipt of final payment.
- This brochure does not from a part of agreement or any legal document, it is only a display of the project.
- Subject to Vadodara Jurisdiction.

## PAYMENT MODE

- 20% on Booking
- 10% Plinth
- 10% Ground Floor Slab
- 10% First Floor Slab
- 10% Second Floor Slab
- 10% Third Floor Slab
- 10% Fourth Floor Slab
- 05% Fifth Floor Slab
- 05% Sixth Floor Slab
- 05% Flooring
- 05% Before Possession

# LAYOUT PLAN

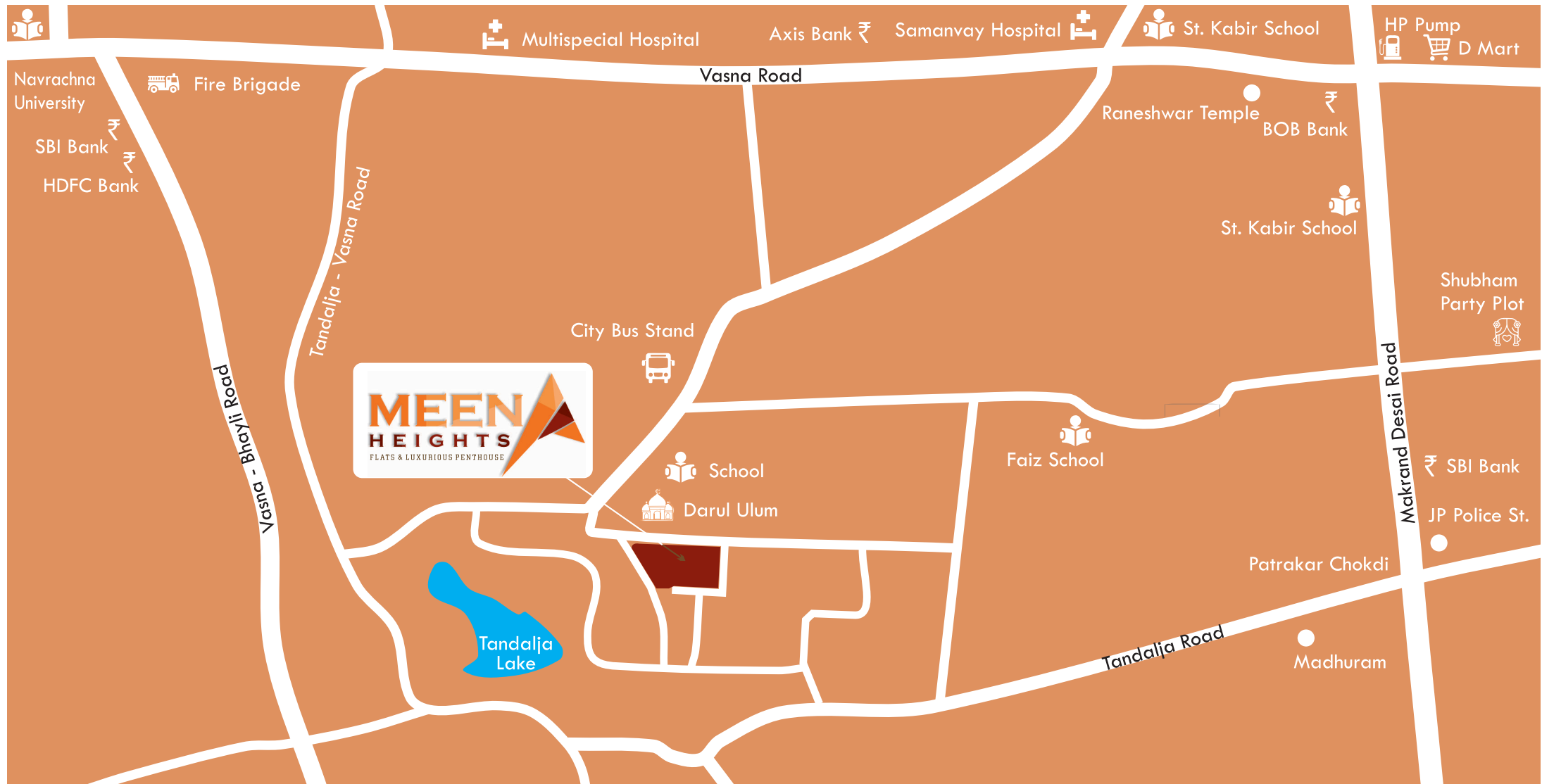




# KEY PLAN

## Near by Places...

-  Darul Ulum Masjid
-  Hospital
-  Petrol Pump
-  Police Station
-  Sports Complex
-  Banks
-  Shopping Malls
-  G.E.B. Head Office
-  Party Plots
-  Schools
-  Fire Brigade
-  Gymnasium



# DEVELOPERS : ILYASBHAI ISMAILBHAI PATEL PROPRIETOR OF AAMIR ENTERPRISE

## Meena Hights Tower A

Opp. Darul Ulum, Tandalja  
Road, Tandalja, VADODARA.

FOR BOOKING CALL

+ 91 90336 13361 / + 91 84603 35385

ARCHITECT



STRUCTURAL



The project is registered under Gujerera. Rera Reg. No. : PR/GJ/VADODARA/VADODARA/Others/RAA11460/150323