

WITH PEACE ALL AROUND,  
TRUE LIVING BEGINS HERE.





# NSL EAST COUNTY AT UPPAL

Spread over 5.7 Acres, East County is the pride of Eastern Vector of Hyderabad.

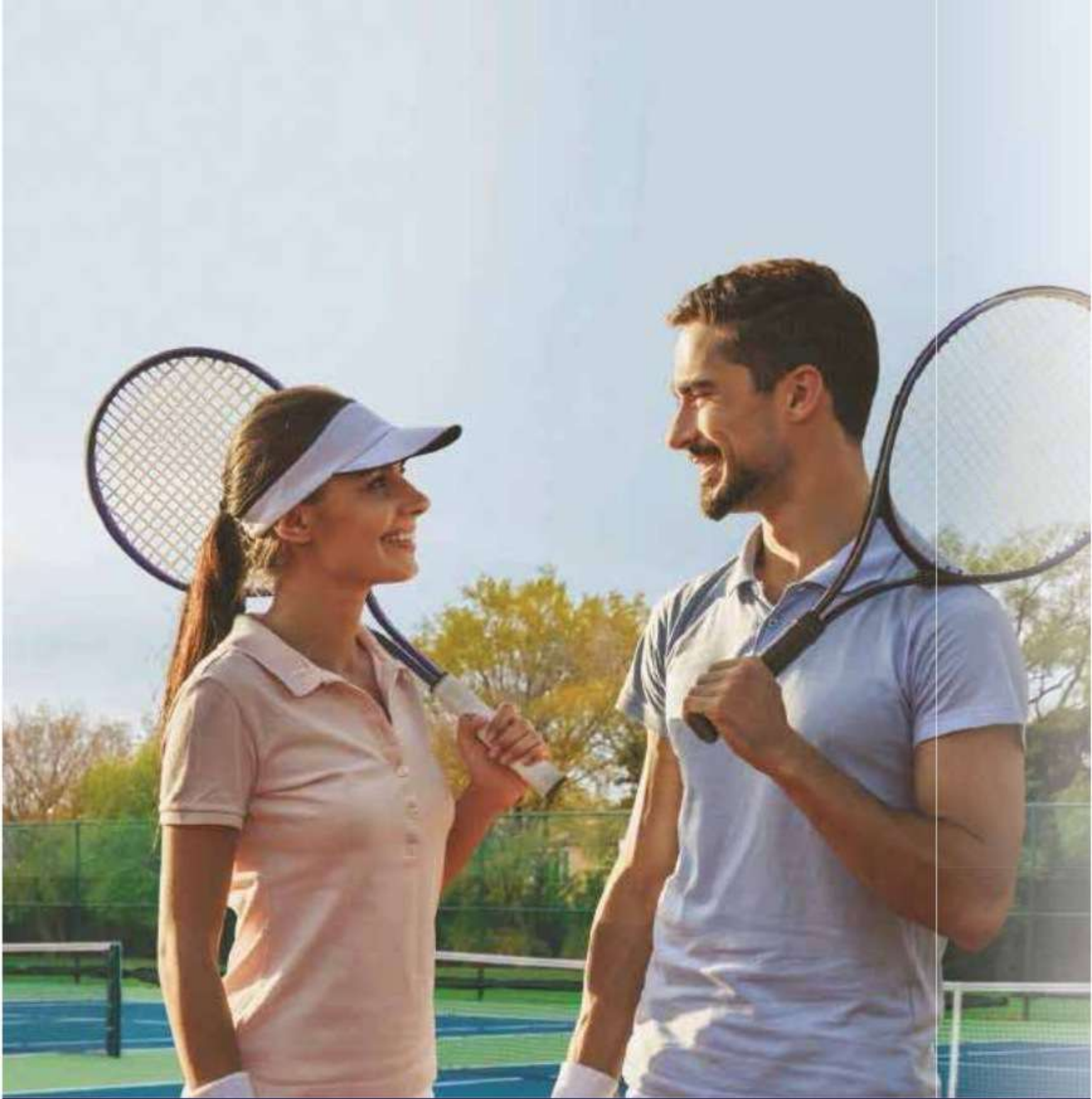
Live Premium Lifestyle in a pristine neighbourhood

**PREMIUM 3 & 4 BHK APARTMENTS**



## Project Highlights

- 2 Towers in 5.7 Acres • G+24 Floors
- 66,000 SFT State-of-the-Art Amenities Spread Over 2 Clubhouses
- IGBC Pre-Certified Platinum Green Building



Club House

Gymnasium

Tennis Court

# GET READY FOR A+ SIZE LIFESTYLE

NSL East County, the peak of features & amenities

World class amenities surrounded by lush green neighbourhood, NSL East County provides a lifestyle that you truly deserve.



SWIMMING POOL WITH KIDS POOL



INDOOR GAMES



GYMNASIUM



YOGA STUDIO\*



LIBRARY\*



PHARMACY\*



MINI PLEX



CRICKET PRACTICE NETS



TENNIS COURT



HALF BASKETBALL COURT



SKATING RINK



CRECHE\*



SQUASH COURT



CAFETERIA\*



AMPHITHEATRE



MEETING ROOM\*



MULTIPURPOSE HALL



GUEST ROOMS



SALON\*



CONVENIENCE STORE\*



CLINIC\*



JOGGING & WALKING PATH



INDOOR BADMINTON COURT



RECREATIONAL ZONE



ATM\*



TREE-LINED WALKWAYS



SOLAR STREET LIGHTING



DRIVERS WAITING ROOM

\*Space has been provisioned



Terrace Amenities



Indoor Games



Banquet Hall



Swimming Pool



Cricket Practice Net



Skating Rink

# FOR THOSE WHO LIVE EVERY MOMENT EXCLUSIVELY



Balcony with Rajiv Gandhi International Cricket Stadium View



Baywindow View

## MASTER PLAN



### Legend

- |                          |                            |                           |                          |
|--------------------------|----------------------------|---------------------------|--------------------------|
| 01. Entrance/Exit Gate-1 | 08. Clubhouse-2            | 15. Tennis Court          | 22. Swimming Pool        |
| 02. Entrance/Exit Gate-2 | 09. Jogging & Walking Path | 16. Half Basketball Court | 23. Vehicular Ramps      |
| 03. Drop-Off-Tower-1     | 10. Children Play Area     | 17. Open Air Theatre      | 24. Mini Football        |
| 04. Drop-off-Clubhouse-1 | 11. Skating Rink           | 18. Pedestrian Pathway    | 25. Drop-off-Tower-2     |
| 05. Tower- 1             | 12. Outdoor Gym            | 19. Change Rooms          | 26. Drop-off-Clubhouse-2 |
| 06. Tower-2              | 13. Recreational Zone      | 20. Children Play Pool    |                          |
| 07. Clubhouse-1          | 14. Cricket Practice nets  | 21. Waterjet Pool         |                          |

# SPECIFICATIONS

## STRUCTURE:

Seismic Zone II compliant RCC framed structure.

---

## SUPER STRUCTURE:

- 160mm thick RCC wall for external walls
  - 100/160mm thick RCC wall for internal walls
- 

## DOORS:

Main Door of 8 ft. height with Teak wooden frame and shutters, internal doors with solid wooden frame and flushed shutters.

---

## WINDOWS:

3 Track UPVC Window system with provision for mosquito net.

---

## PAINTINGS

External walls with texture plus external premium emulsion paint.

Internal walls with smooth Acrylic putty finish with premium emulsion paint.

---

## FLOORING

**Kitchen, Living & Dining:** 800mm X 800mm vitrified tile of ISI Quality.

**Bedrooms:** 600mm X 600mm vitrified tile of ISI Quality.

**Toilets:** Anti-Skid Ceramic Tiles.

---

## DADOING

**Kitchen:** Ceramic Tiles dado up to 2'-0" height above kitchen platform.

**Toilets:** Ceramic Tiles dado up to 8'-0" height from FFL.

**Utility/Wash area:** Ceramic Tiles dado up to 3'-0" height.

---

## KITCHEN:

Granite Platform with stainless steel sink and dual pipe connection with municipal and bore water. Power point provision for fixing water purifier.

---

## UTILITIES/WASH:

Provision for washing machine and wet area for washing utensils etc.

---

## PLUMBING AND SANITARY WARE:

CP Fittings & Fixtures shall be of reputed ISI approved manufacturers, including that of EWC with flush valve, wall diverter, wash basin etc. Provision for exhaust fan in all toilets.

---

## ELECTRICAL:

Concealed piping with copper wires and modular switches with adequate points for power and lighting. Power outlet for air conditioners in living and bedrooms.

---

## COMMUNICATION AND SECURITY:

Provision for telephone points shall be provided in living room and master bedrooms.

Intercom point shall be provided connecting to security guard.

Cable TV connection points in master bedroom and living room.

---

## LIFTS:

9 Nos. of Passenger Lifts and 2Nos. Service Lifts provided for the entire block.

---

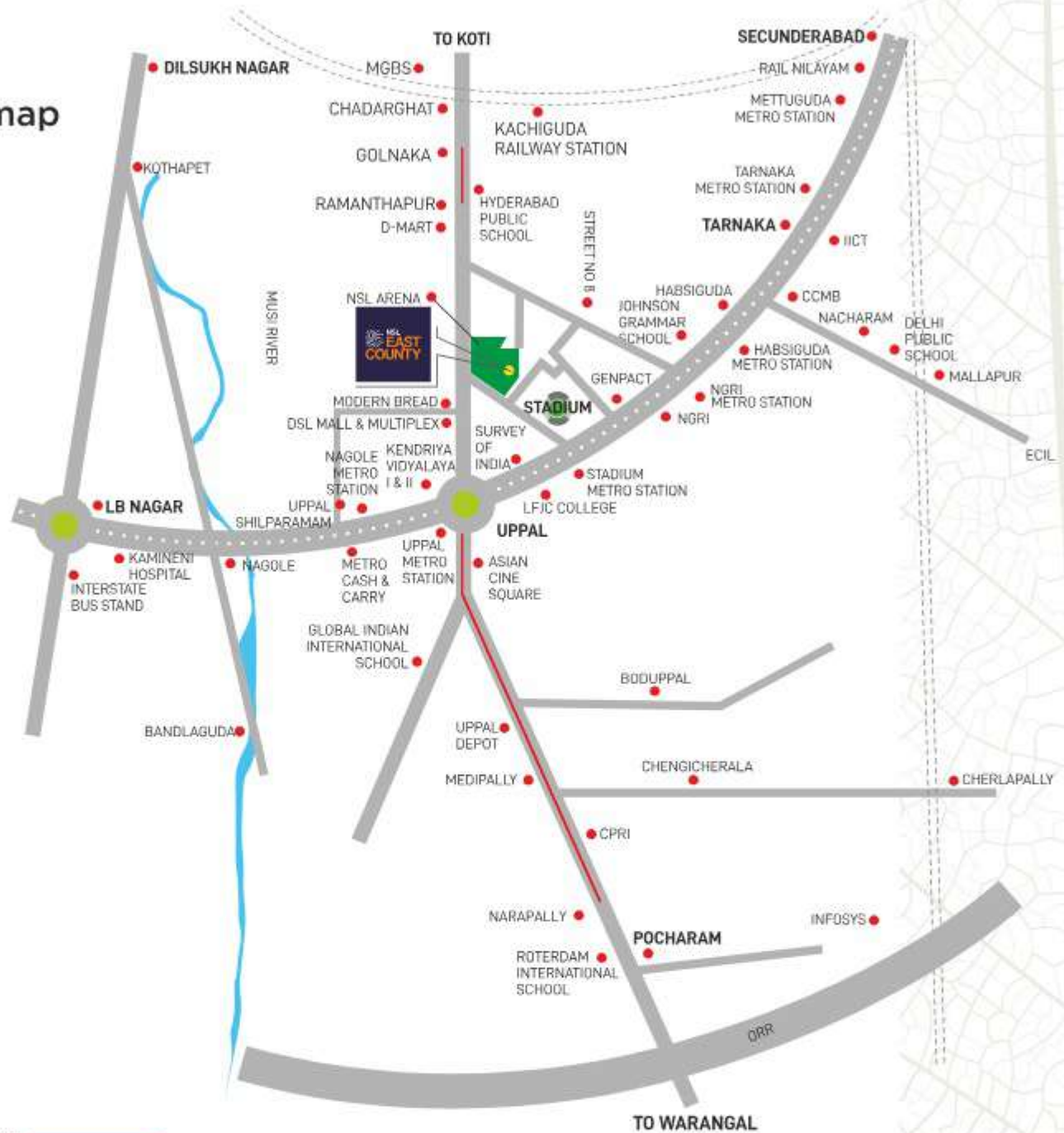
## GENERATOR:

100% power back up (Except for A/C and Geysers).

---

# GREAT CONNECTIVITY TO TAKE YOU PLACES.

Location map (not to scale)



Proposed Flyover

<b>RETAIL</b> Asian Mall Big Bazaar D-Mart DSL Virtue Mall Metro Cash N Carry Spar Vishal Mega Mart	<b>HEALTHCARE</b> Aaditya Hospital Apollo Hospital Kamineni Hospital KIMS Matrix Hospital Yashoda Hospital	<b>EDUCATION</b> Global Indian International Hyderabad Public School Johnson Grammar School Kendriya Vidyalaya Narayana E Techno School Narayana Junior College Osmania University	<b>ENTERTAINMENT</b> Asian Multiplex Cinepolis Game Zone Point RGI Cricket Stadium
--	--	---	--



**CORPORATE OFFICE**  
 NSL Icon, 4th Floor, #8-2-684/2/A,  
 Plot No.1-4, Road No.12,  
 Banjara Hills, Hyderabad-500034,  
 Telangana, India.

**SITE OFFICE**  
 NSL East County, Plot No. 6,  
 Survey No. 1, Uppal,  
 Hyderabad-500039,  
 Telangana, India.



For more Information **+91 96186 06677** CONNECT WITH US [www.nslinftratech.com](http://www.nslinftratech.com)

Disclaimer: The contents provided in this brochure are intended for informational purposes only and are not intended to constitute an offer or solicitation. We reserve our right to change or modify any information, material, data etc. Customers are responsible for seeking advice of professionals, as appropriate, regarding the information, opinions, advice or contents pertaining to the property and its development, the details of which are set out in the brochure. All images shown are Artistic Impression and for illustration purpose only. Only selected apartments has the views as mentioned in the brochure.

# TYPICAL PLAN 8-14 FLOORS





# TYPICAL PLAN 22-24 FLOORS



# TYPICAL PLAN G - 7 & 15-21 FLOORS



# 3 BHK EAST



Saleable Area

1941 SFT

Floors

G - 7 & 15 TO 21

UNIT NO.

2,3,4,5



# 3 BHK EAST



Saleable Area

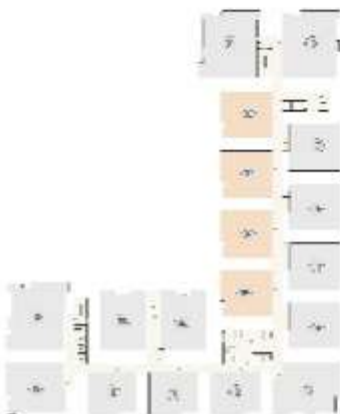
1974 SFT

Floors

22 - 24

UNIT NO.

2,3,4,5



# 3 BHK EAST



Saleable Area

2213 SFT

Floors

8 - 14

UNIT NO.

7



# 3 BHK EAST



Saleable Area

2213 SFT

Floors

22 - 24

UNIT NO.

7



# 3 BHK EAST



Saleable Area

2282 SFT

Floors

6 & 7

UNIT NO.

9



# 3 BHK EAST



Saleable Area

1944 SFT

Floors

8 - 14

UNIT NO.

2,3,4,5





# 3 BHK EAST



**Saleable Area**

**2324 SFT**

**Floors**

**15 -21**

**UNIT NO.**

**9**



# 3 BHK EAST



Saleable Area

2336 SFT

Floors

8 - 14

UNIT NO.

9



# 3 BHK EAST



Saleable Area

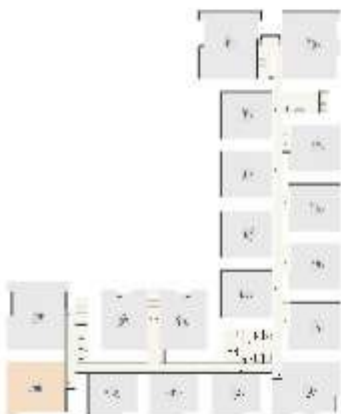
2370 SFT

Floors

22 - 24

UNIT NO.

9



# 3 BHK NORTH



Saleable Area

1633 SFT

Floors

8 - 14

UNIT NO.

10,11,12



# 3 BHK NORTH



Saleable Area

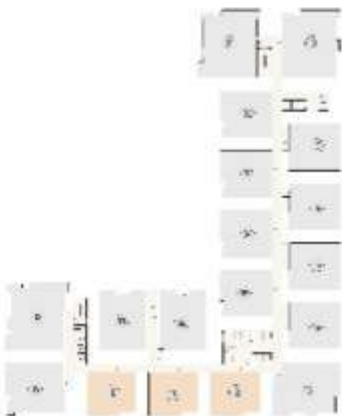
1656 SFT

Floors

1 - 7 & 15 TO 21

UNIT NO.

10,11,12



# 3 BHK NORTH



**Saleable Area**

1656 SFT

**Floors**

22 - 24

**UNIT NO.**

10,11,12



# 3 BHK WEST



Saleable Area

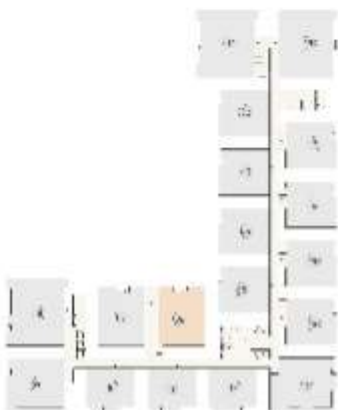
2213 SFT

Floors

8 - 14

UNIT NO.

6



# 3 BHK WEST



Saleable Area

2632 SFT

Floors

1 - 7 & 15 TO 21

UNIT NO.

13





# 3 BHK WEST



**Saleable Area**

**1875 SFT**

**Floors**

**8 - 14**

**UNIT NO.**

**14,15,16,17**



# 3 BHK WEST



Saleable Area

1899 SFT

Floors

1 - 7 & 15 TO 21

UNIT NO.

14,15,16,17



# 3 BHK WEST



Saleable Area

2213 SFT

Floors

22 -24

UNIT NO.

6



# 3 BHK WEST



Saleable Area

2213 SFT

Floors

G - 7 & 15 TO 21

UNIT NO.

6



# 3 BHK WEST



Saleable Area

2597 SFT

Floors

8 - 14

UNIT NO.

13



# 3 BHK WEST



Saleable Area

1899 SFT

Floors

22 - 24

UNIT NO.

14,15,16,17



# 3 BHK EAST



Saleable Area

2213 SFT

Floors

G - 7 & 15 TO 21

UNIT NO.

7



# 3 BHK WEST



Saleable Area

2632 SFT

Floors

22 - 24

UNIT NO.

13





# 4 BHK EAST



Saleable Area

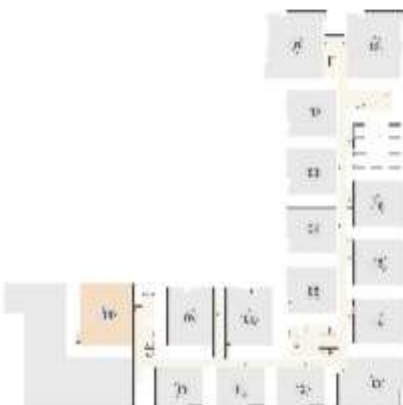
2708 SFT

Floors

1

UNIT NO.

8



# 4 BHK EAST



Saleable Area

3103 SFT

Floors

22 - 24

UNIT NO.

1 & 8



# 4 BHK EAST



Saleable Area

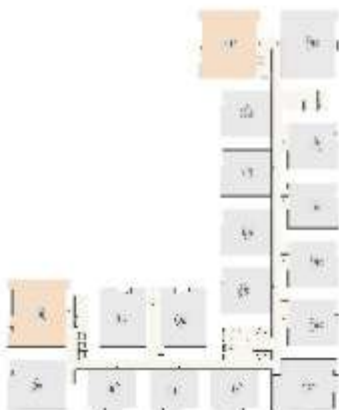
3063 SFT

Floors

8 - 14

UNIT NO.

1 & 8



# 4 BHK EAST



Saleable Area

2988 SFT

Floors

G - 7 & 15 - 21

UNIT NO.

1



# 4 BHK EAST



**Saleable Area**

**2934 SFT**

**Floors**

**2,3,4,5,6,7**

**UNIT NO.**

**8**



# 4 BHK EAST



**Saleable Area**

**2988 SFT**

**Floors**

**15 - 21**

**UNIT NO.**

**8**



# 4 BHK WEST



Saleable Area

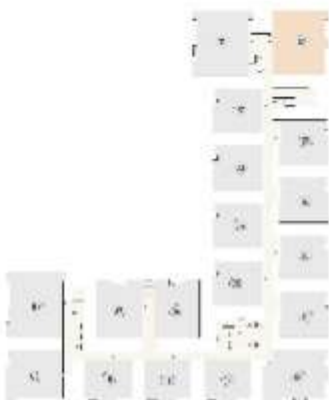
3022 SFT

Floors

8 - 14

UNIT NO.

18



# 4 BHK WEST



Saleable Area

3039 SFT

Floors

22 - 24

UNIT NO.

18





# 4 BHK WEST



Saleable Area

2964 SFT

Floors

15 - 21

UNIT NO.

18



# 4 BHK WEST



Saleable Area

2968 SFT

Floors

G - 7

UNIT NO.

18

