

A Project by



A Life of
Comfort
Awaits You.



PVR 
pride
3&4 BHK PREMIUM
APARTMENTS

PATAMATALANKA,
VIJAYAWADA

NETHAJI ROAD

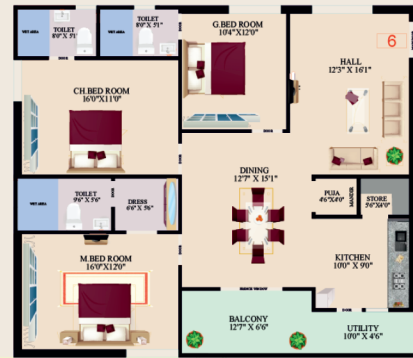
NETHAJI ROAD



CORRIDOR



CORRIDOR



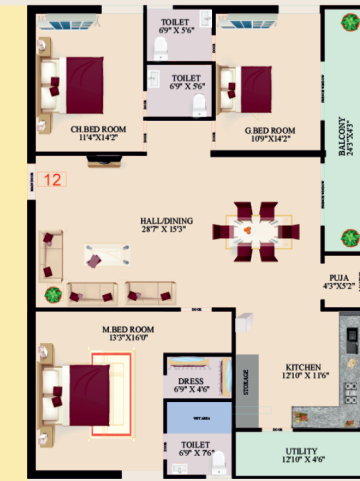
CORRIDOR



CORRIDOR



CORRIDOR



Master Plan Layout



FLAT#	TYPE	PLINTH	PARKING	TOTAL	UNDIVIDED SHARE
1	4 BHK - EAST	2505 sq.ft	240 sq.ft	3460 sq.ft	103.25 sq.yds
2	4 BHK - EAST	2160 sq.ft	240 sq.ft	3015 sq.ft	90.00 sq.yds
3,5,7	3 BHK - EAST	1526 sq.ft	240 sq.ft	2200 sq.ft	65.65 sq.yds
4,8	3 BHK - WEST	1308 sq.ft	120 sq.ft	1800 sq.ft	53.71 sq.yds
6,10	3 BHK - EAST	1308 sq.ft	120 sq.ft	1800 sq.ft	53.71 sq.yds
9	3 BHK - EAST	1486 sq.ft	240 sq.ft	2150 sq.ft	64.15 sq.yds
11	3 BHK - WEST	1230 sq.ft	120 sq.ft	1700 sq.ft	50.74 sq.yds
12	3 BHK - WEST	1486 sq.ft	240 sq.ft	2150 sq.ft	64.15 sq.yds

Specifications

Foundation

Pile foundation as per soil report, as recommended by the approved structural engineer

Super Structure:

R.C.C. framed structure and bricks masonry with 9 external and 4 internal walls.

Painting

Asian / Berger or Equivalent make emulsion paint for interiors, weather proof emulsion paint for exterior.

Kitchen

Granite platform with stainless steel sink, 2' height ceramic tiled dado on cooking platform

Electrical

Concealed copper wiring with Finolex / Havells / Legrand or Equivalent make.

Windows

UPVC windows of NCL or equivalent company with safety grills.

Sanitary

Jaguar / CERA or Equivalent make CP fittings & sanitary ware.

Security

Advanced 24/7 security with CCTV surveillance.

T.V. & Telephone

T.V. point in living & master bedroom, telephone point in living.

Lift

Johnson or equivalent make 6 Passenger lifts in each blocks.

Flooring

Premium quality vitrified tiles for entire flat

Power Backup

Generator for common area lighting, lift and all light and fan points in each flat.

Doors

INTERNAL DOOR:
WPC/Engineered wood frame with flush shutter.

MAIN DOOR

Teak wood frame with flush shutter with both side teak veneer & Melamine Polished.

PVR Group proudly presents **PVR Pride**, offering luxurious **3 & 4 BHK apartment** near Benz Circle, Heart of the Vijayawada's city. With excellent connectivity to highways, schools, hospitals, and shopping hubs, PVR Pride is thoughtfully designed for comfort, natural light, and ventilation. Built with superior materials and craftsmanship, this project perfectly blends luxury and functionality in the heart of the city.



Location Map

(Not to Scale)

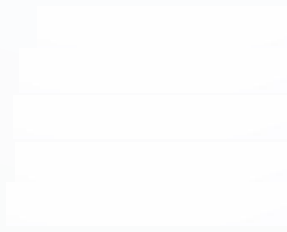


Scan for Location



Near by Highlights

- | | | | |
|-----------------|------------|-------------------------|------------|
| ➤ Benz Circle | 2 Minutes | ➤ Aster Ramesh Hospital | 10 Minutes |
| ➤ NTR Statue | 3 Minutes | ➤ Manipal Hospital | 10 Minutes |
| ➤ Trendset Mall | 5 Minutes | ➤ Bus Stand | 12 Minutes |
| ➤ NSM School | 5 Minutes | ➤ Railway Station | 15 Minutes |
| ➤ Nirmla School | 12 Minutes | ➤ Airport | 30 Minutes |



DASARI RAMBABU
TUMMALA VAMSI KRISHNA
BANDI PAVAN KUMAR



Site Address:
Nethaji Street, Patamatalanka, Vijayawada.

Note: This brochure is only a conceptual presentation of the project and not a legal offering. The promoters reserve the right to alter and make changes in elevation, specifications and plans as deemed fit.