

STEP  
INTO A  
NEW  
ERA OF  
LUXURY





# A FIRST-CLASS LIVING EXPERIENCE

Welcome to Prestige Spring Heights, a luxurious community with 3 and 4 bed homes nestled in Budwel with stunning views of the cityscape and the Himayat Sagar Lake. Designed to give you a living experience unlike any other.

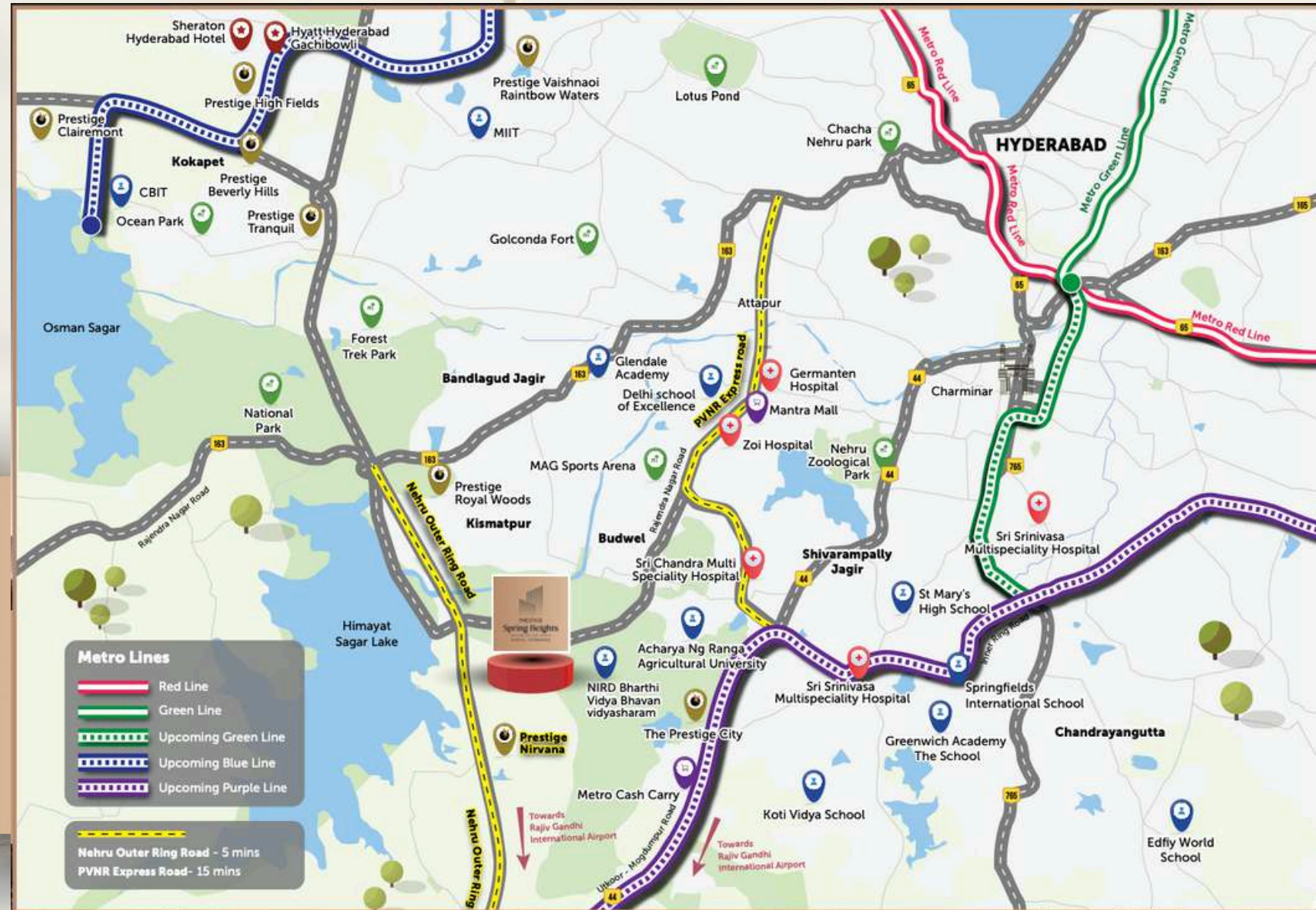






# THE BEST PARTS OF HYDERABAD WITHIN REACH

Located in Budwel, Prestige Spring Heights is in the heart of Hyderabad, providing convenient access to the city's financial district and other major commercial areas, schools, offices and hospitals. So, you can enjoy the city life without worrying about commute.







*Prestige Spring Heights*



# NATURE ALL AROUND



Comprising of 4 towers situated on 10 acres of land Prestige Spring Heights has plenty of greenery and nature in the form of lush green landscapes. Your home overlooks the Himayat Sagar Lake giving you beautiful views and fresh air. Outdoor recreational zones are centrally located and surrounded by stepped landscaped gardens so you feel wrapped and surrounded by nature and greenery.



SKY LOUNGE







# REACH NEW HEIGHTS AT THE SKY LOUNGE

Situated Above Tower 3 is an exclusive lounge with its own private entrance for you to relax or have meetings in front of picturesque views of the cityscape and surroundings. It has private meeting rooms and elegantly designed interiors making it the only one of its kind in the area.





# EXPERIENCE A LIFESTYLE LIKE NO OTHER


Prestige Spring Heights has a range of 3- and 4-bedroom homes with large continuous balconies that have views of the surrounding landscape. You can enjoy panoramic lake views and plenty of natural light and fresh air with large windows and expansive balconies.





SKY LOUNGE (DECK)



A man and a woman are sitting on a modern, light-colored sofa in a spacious lounge. They are both looking out of large floor-to-ceiling windows at a swimming pool and a sunset. The man is wearing a white shirt and the woman is wearing a white dress. The room is filled with warm, golden light from the setting sun. There are potted plants and a small round table with a drink on it in the foreground.

# FIND LEISURE IN THE HEART

The Clubhouse at Prestige Spring Heights is located at the heart of the property and is loaded with plenty of world class amenities, like an infinity pool, badminton courts, squash courts, party halls, guest rooms and a mini theatre. The infinity pool cascades down to the central lawn blending in seamlessly with the surrounding landscape.



# MASTERPLAN



TOWER NUMBER	CLUSTER TYPE
TOWER-1 (G+34)	(4 BED TYPE P, 3 BED TYPE G, 4 BED TYPE J, 3 BED TYPE F, 3 BED TYPE H, 1 BED TYPE H1, 3 BED TYPE B, 3 BED TYPE A, 3 BED TYPE E)
TOWER-2 (G+34)	(4 BED TYPE P, 3 BED TYPE G, 4 BED TYPE J, 4 BED TYPE L, 3 BED TYPE B, 3 BED TYPE A, 4 BED TYPE K)
TOWER-3 (G+34)	(4 BED TYPE P, 3 BED TYPE G, 3 BED TYPE C, 3 BED TYPE E, 4 BED TYPE Q, 3 BED TYPE D, 4 BED TYPE M, 3 BED TYPE H, 3 BED TYPE A, 4 BED TYPE N, SKY LOUNGE)
TOWER-4 (G+34)	(4 BED TYPE M, 3 BED TYPE H, 3 BED TYPE A, 3 BED TYPE B, 4 BED TYPE K, 3 BED TYPE E, 4 BED TYPE L, 3 BED TYPE G, 4 BED TYPE J)

## LEGEND

1. ENTRY/EXIT
2. ENTRY RAMP
3. EXIT RAMP
4. CLUBHOUSE
5. SWIMMING POOL
6. CENTRAL RECREATIONAL SPACE
7. CRICKET NET
8. SKATING RINK
9. KIDS PLAY AREA
10. HALF BASKETBALL COURT
11. SERVICES
12. SKY LOUNGE ENTRY/EXIT

● DROP-OFF



# NUMBERING PLAN



COLOR	TYPE	AREA (SQ.FT)	NO OF UNITS
	3 BED TYPE A: (EAST)	1576	169
	3 BED TYPE B: (WEST)	1596	136
	3 BED TYPE C: (WEST)	1571	33
	3 BED TYPE D: (EAST)	1928	96
	3 BED TYPE E: (WEST)	1928	173
	3 BED TYPE F: (EAST)	2101	70
	3 BED TYPE G: (NORTH)	2091	350
	3 BED TYPE H: (WEST)	2083	103
	1 ROOM UNIT TYPE H1: (WEST)	401	2
	4 BED TYPE J (NORTH)	2429	105
	4 BED TYPE K (WEST)	2451	70
	4 BED TYPE L (EAST)	2407	70
	4 BED TYPE M: (EAST)	3065	104
	4 BED TYPE N: (WEST)	3233	35
	4 BED TYPE P: (NORTH)	3036	105
	4 BED TYPE Q: (WEST)	3051	35
	CLUBHOUSE		
TOTAL NUMBER OF UNITS			1656



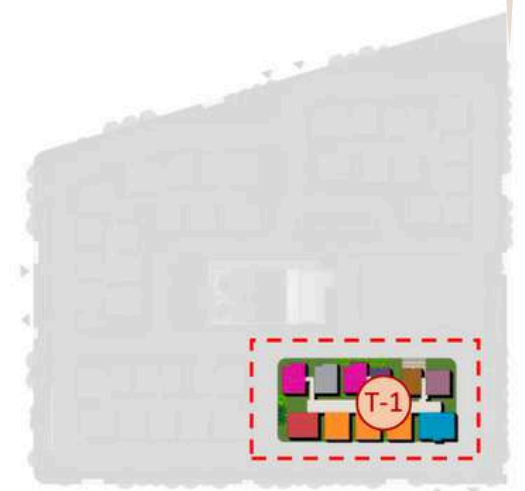


# TOWER PLANS



# TOWER 1

## GROUND FLOOR PLAN



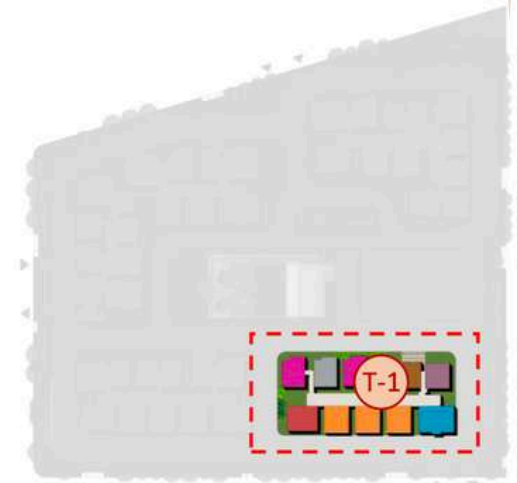
KEY PLAN

COLOR	UNIT TYPE	AREA	NO. OF UNITS
	4 BED TYPE P (NORTH)	3036	35
	3 BED TYPE G (NORTH)	2091	105
	4 BED TYPE J (NORTH)	2429	35
	3 BED TYPE F (EAST)	2101	70
	3 BED TYPE H (WEST)	2083	33
	3 BED TYPE B (WEST)	1596	35
	3 BED TYPE A (EAST)	1576	33
	3 BED TYPE E (WEST)	1928	35



# TOWER 1

## FIRST FLOOR PLAN



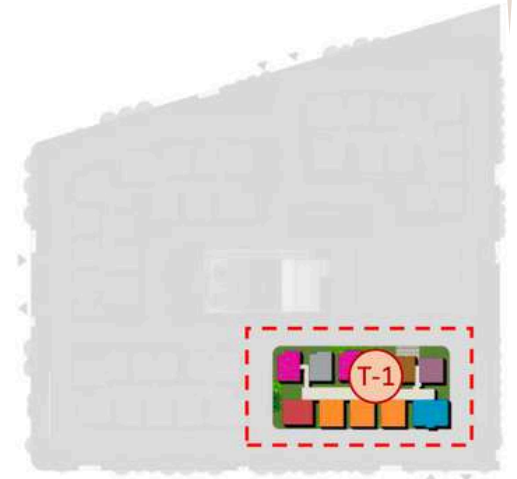
KEY PLAN

COLOR	UNIT TYPE	AREA	NO. OF UNITS
Blue	4 BED TYPE P (NORTH)	3036	35
Orange	3 BED TYPE G (NORTH)	2091	105
Red	4 BED TYPE J (NORTH)	2429	35
Pink	3 BED TYPE F (EAST)	2101	70
Grey	3 BED TYPE H (WEST)	2083	33
Purple	3 BED TYPE B (WEST)	1596	35
Brown	3 BED TYPE A (EAST)	1576	33
Dark Purple	3 BED TYPE E (WEST)	1928	35



# TOWER 1

## TYPICAL FLOOR PLAN



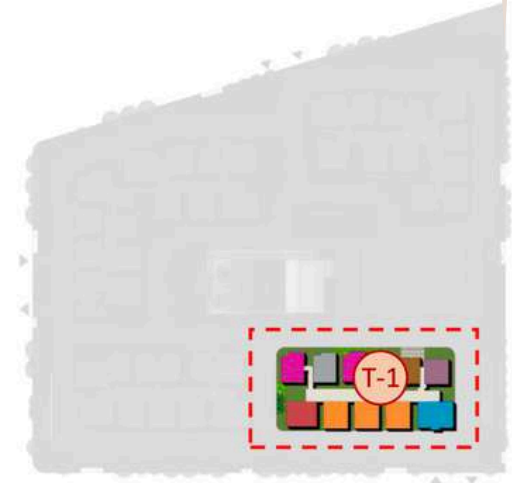
KEY PLAN

COLOR	UNIT TYPE	AREA	NO. OF UNITS
	4 BED TYPE P (NORTH)	3036	35
	3 BED TYPE G (NORTH)	2091	105
	4 BED TYPE J (NORTH)	2429	35
	3 BED TYPE F (EAST)	2101	70
	3 BED TYPE H (WEST)	2083	33
	3 BED TYPE B (WEST)	1596	35
	3 BED TYPE A (EAST)	1576	33
	3 BED TYPE E (WEST)	1928	35



# TOWER 1

## REFUGE FLOOR PLAN



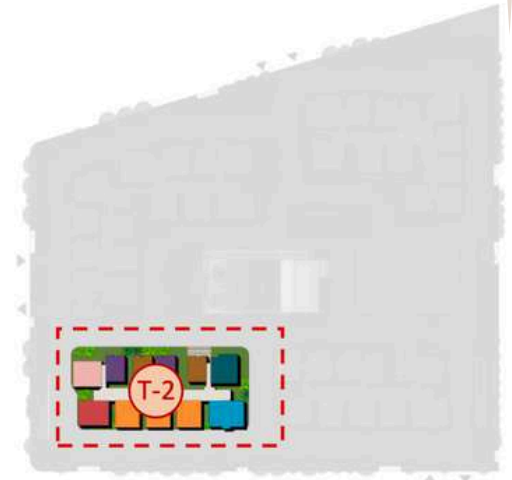
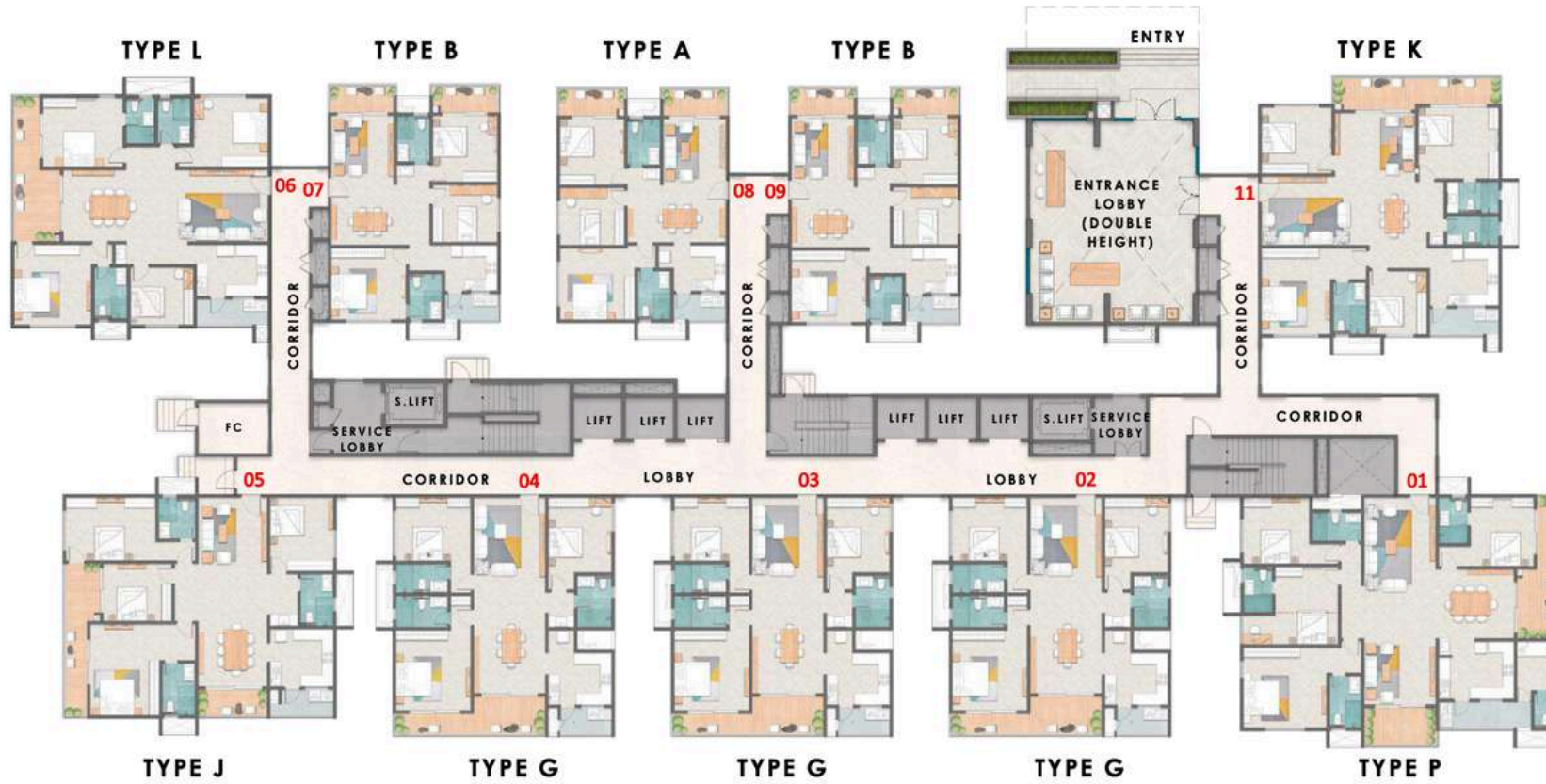
KEY PLAN

COLOR	UNIT TYPE	AREA	NO. OF UNITS
Blue	4 BED TYPE P (NORTH)	3036	35
Orange	3 BED TYPE G (NORTH)	2091	105
Red	4 BED TYPE J (NORTH)	2429	35
Pink	3 BED TYPE F (EAST)	2101	70
Grey	1 BED TYPE H1 (WEST)	401	2
Purple	3 BED TYPE B (WEST)	1596	35
Brown	3 BED TYPE A (EAST)	1576	33
Light Purple	3 BED TYPE E (WEST)	1928	35



# TOWER 2

## GROUND FLOOR PLAN



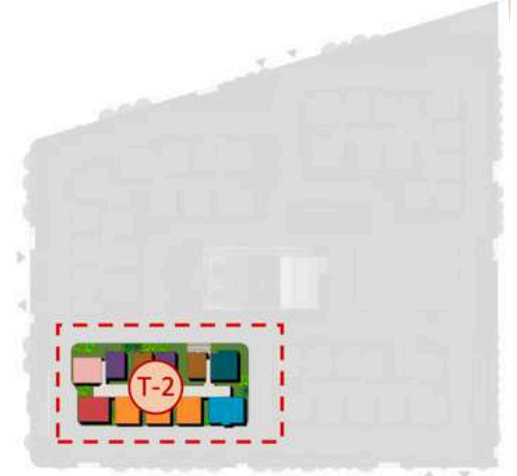
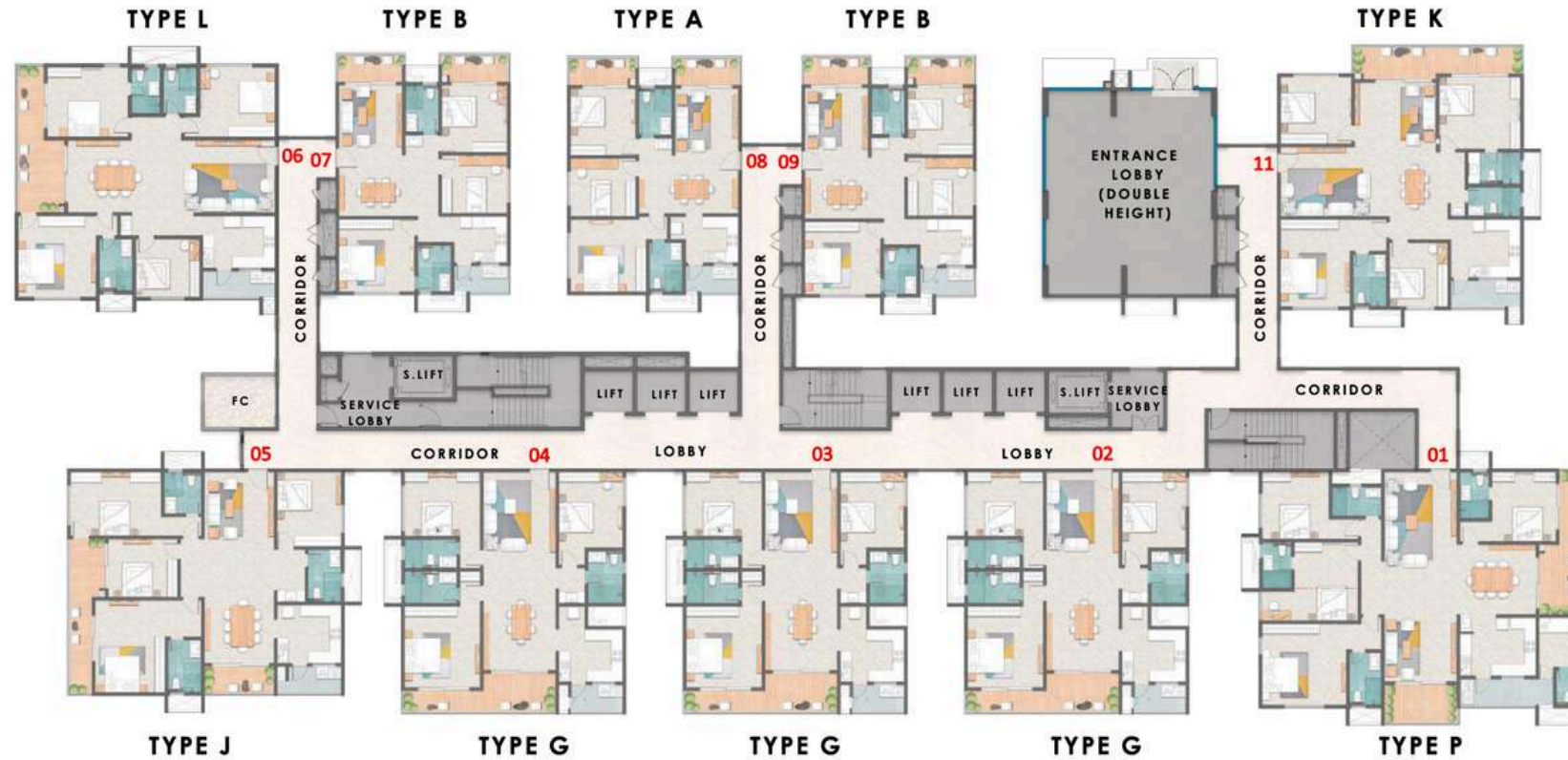
KEY PLAN

COLOR	UNIT TYPE	AREA	NO. OF UNITS
Blue	4 BED TYPE P (NORTH)	3036	35
Orange	3 BED TYPE G (NORTH)	2091	105
Red	4 BED TYPE J (NORTH)	2429	35
Pink	4 BED TYPE L (EAST)	2407	35
Purple	3 BED TYPE B (WEST)	1596	68
Brown	3 BED TYPE A (EAST)	1576	68
Dark Blue	4 BED TYPE K (WEST)	2451	35



# TOWER 2

## FIRST FLOOR PLAN



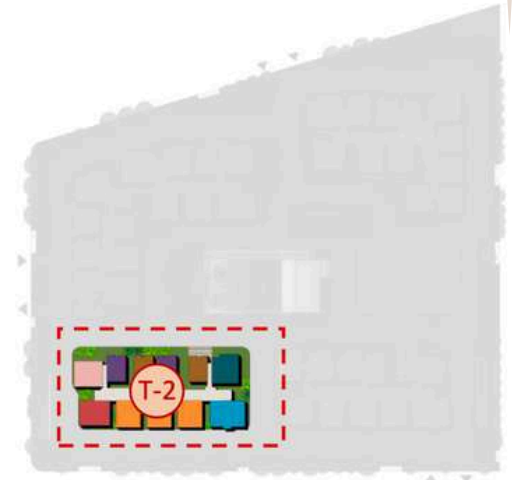
KEY PLAN

COLOR	UNIT TYPE	AREA	NO. OF UNITS
	4 BED TYPE P (NORTH)	3036	35
	3 BED TYPE G (NORTH)	2091	105
	4 BED TYPE J (NORTH)	2429	35
	4 BED TYPE L (EAST)	2407	35
	3 BED TYPE B (WEST)	1596	68
	3 BED TYPE A (EAST)	1576	68
	4 BED TYPE K (WEST)	2451	35



# TOWER 2

## TYPICAL FLOOR PLAN



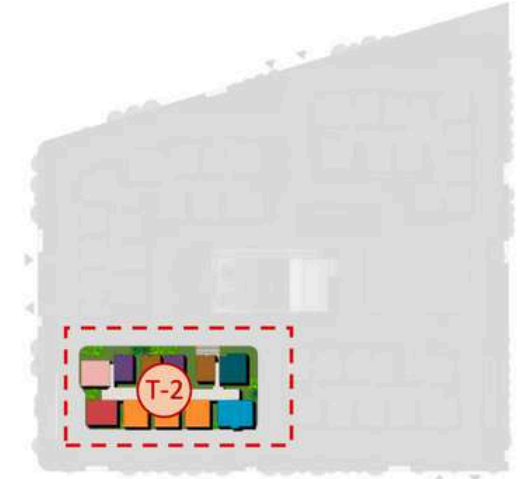
KEY PLAN

COLOR	UNIT TYPE	AREA	NO. OF UNITS
	4 BED TYPE P (NORTH)	3036	35
	3 BED TYPE G (NORTH)	2091	105
	4 BED TYPE J (NORTH)	2429	35
	4 BED TYPE L (EAST)	2407	35
	3 BED TYPE B (WEST)	1596	68
	3 BED TYPE A (EAST)	1576	68
	4 BED TYPE K (WEST)	2451	35



# TOWER 2

## REFUGE FLOOR PLAN



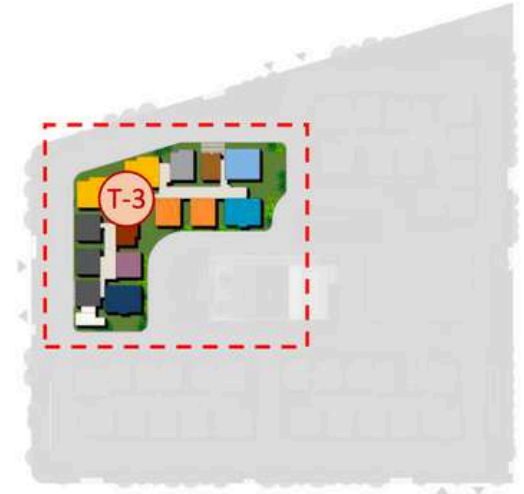
KEY PLAN

COLOR	UNIT TYPE	AREA	NO. OF UNITS
	4 BED TYPE P (NORTH)	3036	35
	3 BED TYPE G (NORTH)	2091	105
	4 BED TYPE J (NORTH)	2429	35
	4 BED TYPE L (EAST)	2407	35
	3 BED TYPE B (WEST)	1596	68
	3 BED TYPE A (EAST)	1576	68
	4 BED TYPE K (WEST)	2451	35



# TOWER 3

## GROUND FLOOR PLAN



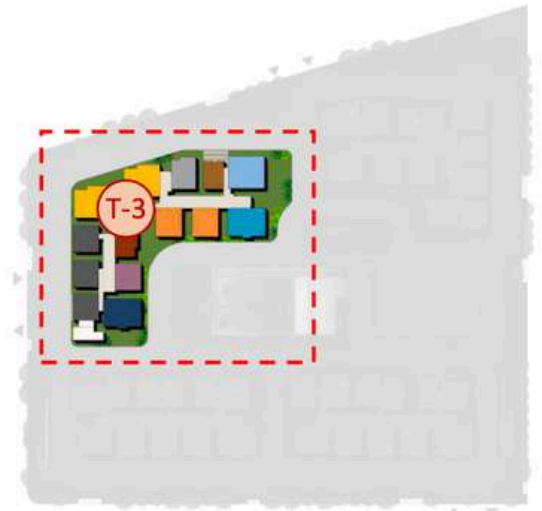
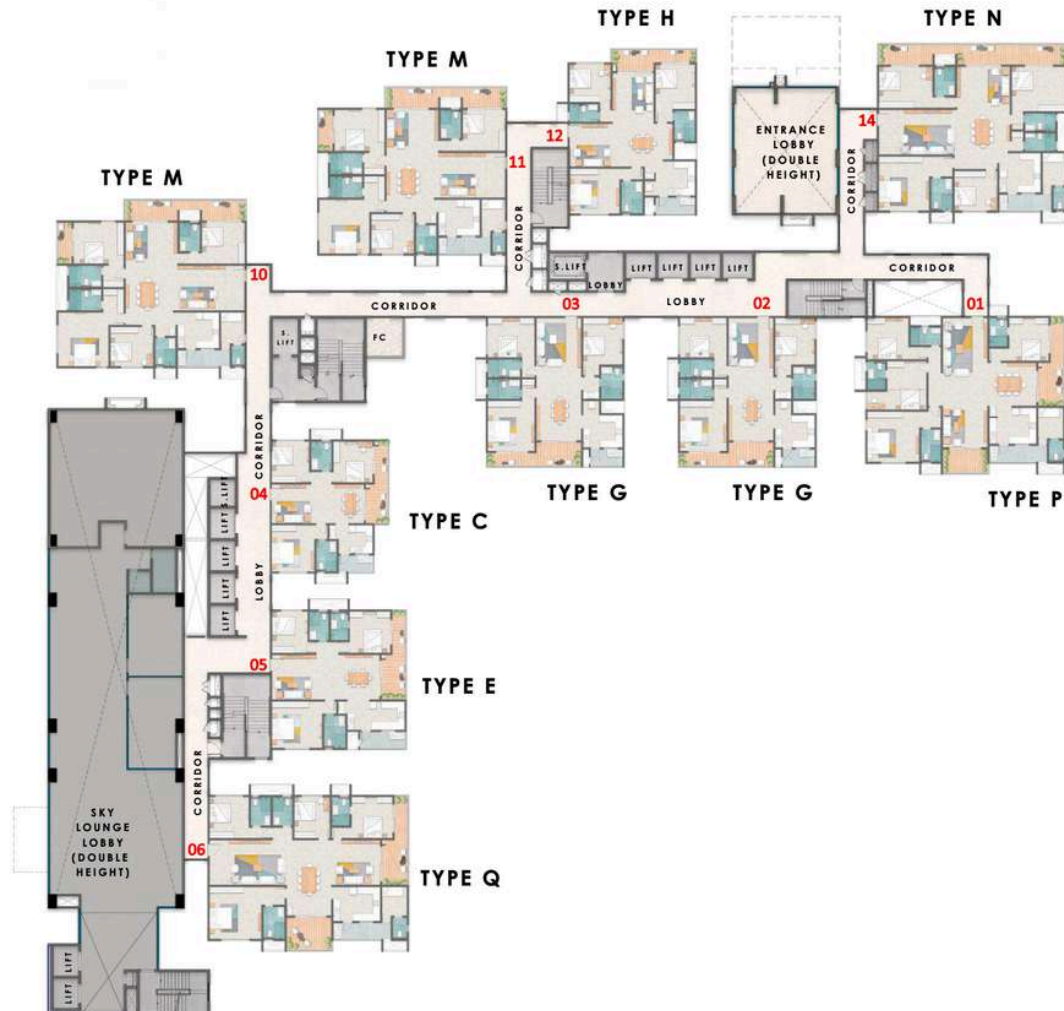
KEY PLAN

COLOR	UNIT TYPE	AREA	NO. OF UNITS
	4 BED TYPE P (NORTH)	3036	35
	3 BED TYPE G (NORTH)	2091	70
	3 BED TYPE C (WEST)	1571	33
	3 BED TYPE E (WEST)	1928	35
	4 BED TYPE Q (WEST)	3051	35
	3 BED TYPE D (EAST)	1928	96
	4 BED TYPE M (EAST)	3065	69
	3 BED TYPE H (WEST)	2083	35
	3 BED TYPE A (EAST)	1576	33
	4 BED TYPE N (EAST)	3233	35



# TOWER 3

## FIRST FLOOR PLAN



KEY PLAN

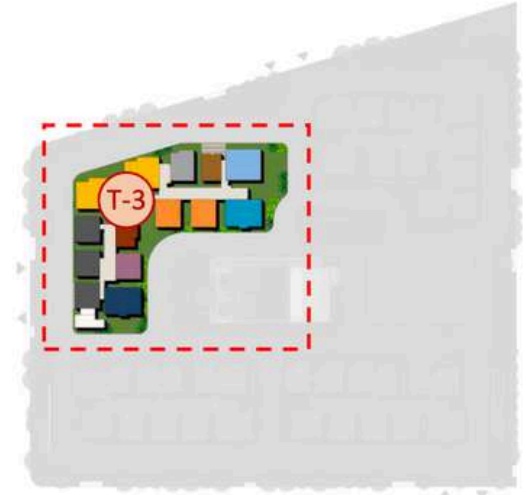
COLOR	UNIT TYPE	AREA	NO. OF UNITS
Blue	4 BED TYPE P (NORTH)	3036	35
Orange	3 BED TYPE G (NORTH)	2091	70
Brown	3 BED TYPE C (WEST)	1571	33
Purple	3 BED TYPE E (WEST)	1928	35
Dark Blue	4 BED TYPE Q (WEST)	3051	35
Grey	3 BED TYPE D (EAST)	1928	96
Yellow	4 BED TYPE M (EAST)	3065	69
Light Grey	3 BED TYPE H (WEST)	2083	35
Dark Brown	3 BED TYPE A (EAST)	1576	33
Light Blue	4 BED TYPE N (EAST)	3233	35



# TOWER 3

## TYPICAL FLOOR PLAN

(3rd, 6th, 9th, 12th, 15th, 18th, 19th, 22nd, 25th, 28th, 29th, 32nd floor)



KEY PLAN

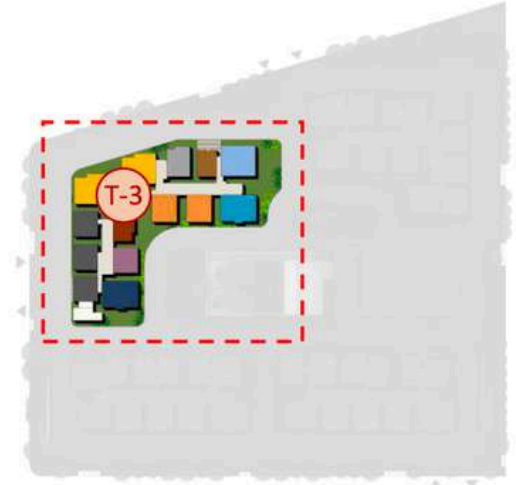
COLOR	UNIT TYPE	AREA	NO. OF UNITS
	4 BED TYPE P (NORTH)	3036	35
	3 BED TYPE G (NORTH)	2091	70
	3 BED TYPE C (WEST)	1571	33
	3 BED TYPE E (WEST)	1928	35
	4 BED TYPE Q (WEST)	3051	35
	3 BED TYPE D (EAST)	1928	96
	4 BED TYPE M (EAST)	3065	69
	3 BED TYPE H (WEST)	2083	35
	3 BED TYPE A (EAST)	1576	33
	4 BED TYPE N (EAST)	3233	35

Note: Sky lounge lift lobby is not accessible on (Ground, 1st, 2nd, 4th, 5th, 7th, 8th, 10th, 11th, 13th, 14th, 16th, 17th, 20th, 21st, 23rd, 24th, 26th, 27th, 30th, 31st & 33rd & 34th)



# TOWER 3

## REFUGE FLOOR PLAN



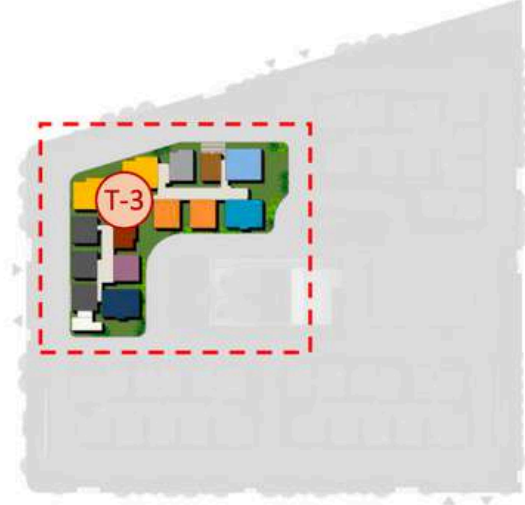
KEY PLAN

COLOR	UNIT TYPE	AREA	NO. OF UNITS
Cyan	4 BED TYPE P (NORTH)	3036	35
Orange	3 BED TYPE G (NORTH)	2091	70
Brown	3 BED TYPE C (WEST)	1571	33
Purple	3 BED TYPE E (WEST)	1928	35
Dark Blue	4 BED TYPE Q (WEST)	3051	35
Grey	3 BED TYPE D (EAST)	1928	96
Yellow	4 BED TYPE M (EAST)	3065	69
Light Grey	3 BED TYPE H (WEST)	2083	35
Brown	3 BED TYPE A (EAST)	1576	33
Blue	4 BED TYPE N (EAST)	3233	35



# TOWER 3

## 34TH FLOOR PLAN



KEY PLAN

COLOR	UNIT TYPE	AREA	NO. OF UNITS
Blue	4 BED TYPE P (NORTH)	3036	35
Orange	3 BED TYPE G (NORTH)	2091	70
Brown	3 BED TYPE C (WEST)	1571	33
Purple	3 BED TYPE E (WEST)	1928	35
Dark Blue	4 BED TYPE Q (WEST)	3051	35
Grey	3 BED TYPE D (EAST)	1928	96
Yellow	4 BED TYPE M (EAST)	3065	69
Light Grey	3 BED TYPE H (WEST)	2083	35
Dark Brown	3 BED TYPE A (EAST)	1576	33
Light Blue	4 BED TYPE N (EAST)	3233	35



# TOWER 3

## 35TH FLOOR PLAN





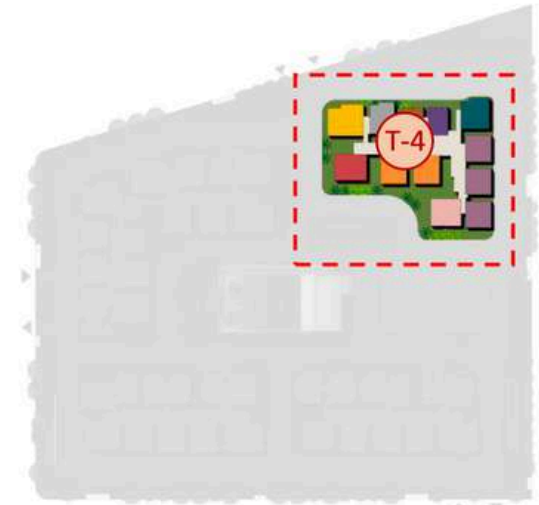
# ENTRANCE LOBBY





# TOWER 4

## GROUND FLOOR PLAN



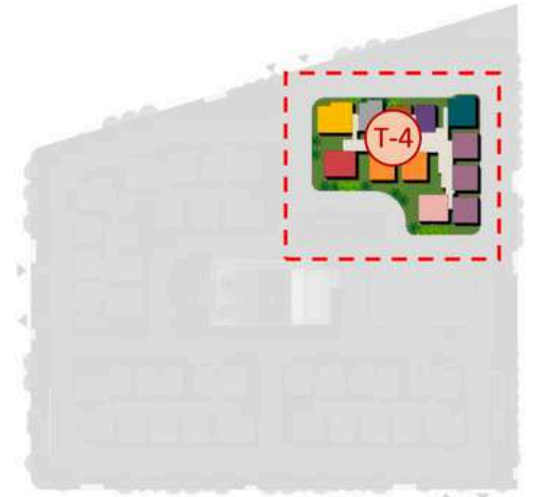
**KEY PLAN**

COLOR	UNIT TYPE	AREA	NO. OF UNITS
Yellow	4 BED TYPE M (EAST)	3065	35
Grey	3 BED TYPE H (WEST)	2083	35
Brown	3 BED TYPE A (EAST)	1576	35
Purple	3 BED TYPE B (WEST)	1596	33
Dark Blue	4 BED TYPE K (WEST)	2451	35
Light Purple	3 BED TYPE E (WEST)	1928	103
Pink	4 BED TYPE L (EAST)	2407	35
Orange	3 BED TYPE G (NORTH)	2091	70
Red	4 BED TYPE J (NORTH)	2429	35



# TOWER 4

## FIRST FLOOR PLAN



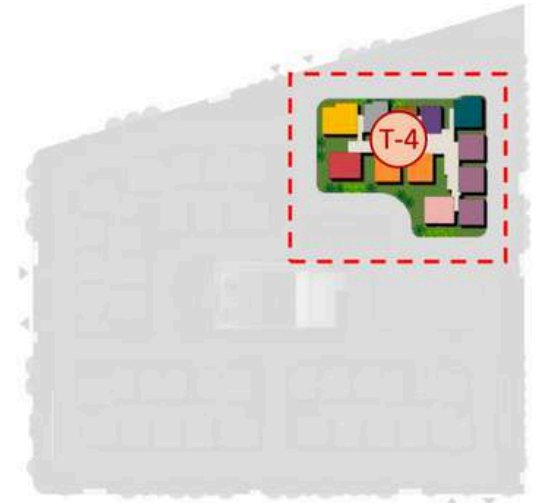
**KEY PLAN**

COLOR	UNIT TYPE	AREA	NO. OF UNITS
Yellow	4 BED TYPE M (EAST)	3065	35
Grey	3 BED TYPE H (WEST)	2083	35
Brown	3 BED TYPE A (EAST)	1576	35
Purple	3 BED TYPE B (WEST)	1596	33
Dark Blue	4 BED TYPE K (WEST)	2451	35
Light Purple	3 BED TYPE E (WEST)	1928	103
Pink	4 BED TYPE L (EAST)	2407	35
Orange	3 BED TYPE G (NORTH)	2091	70
Red	4 BED TYPE J (NORTH)	2429	35



# TOWER 4

## TYPICAL FLOOR PLAN



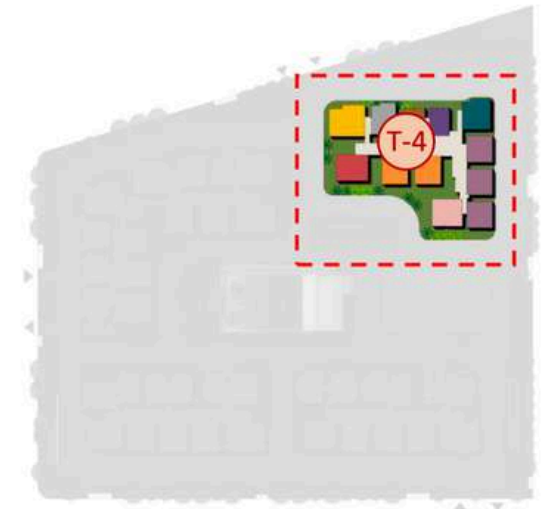
**KEY PLAN**

COLOR	UNIT TYPE	AREA	NO. OF UNITS
Yellow	4 BED TYPE M (EAST)	3065	35
Grey	3 BED TYPE H (WEST)	2083	35
Brown	3 BED TYPE A (EAST)	1576	35
Purple	3 BED TYPE B (WEST)	1596	33
Dark Blue	4 BED TYPE K (WEST)	2451	35
Pink	3 BED TYPE E (WEST)	1928	103
Light Blue	4 BED TYPE L (EAST)	2407	35
Orange	3 BED TYPE G (NORTH)	2091	70
Red	4 BED TYPE J (NORTH)	2429	35



# TOWER 4

## REFUGE FLOOR PLAN



**KEY PLAN**

COLOR	UNIT TYPE	AREA	NO. OF UNITS
Yellow	4 BED TYPE M (EAST)	3065	35
Grey	3 BED TYPE H (WEST)	2083	35
Brown	3 BED TYPE A (EAST)	1576	35
Purple	3 BED TYPE B (WEST)	1596	33
Dark Teal	4 BED TYPE K (WEST)	2451	35
Light Purple	3 BED TYPE E (WEST)	1928	103
Pink	4 BED TYPE L (EAST)	2407	35
Orange	3 BED TYPE G (NORTH)	2091	70
Red	4 BED TYPE J (NORTH)	2429	35





# UNIT PLANS

## 3 BED: TYPE A (EAST) : 1576 SQ.FT.



**KEY PLAN**

### 3 BED TYPE A (EAST)

SALE AREA	- 1576 SQ.FT.
CARPET AREA	- 965.53 SQ.FT.
BALCONY AREA	- 97.63 SQ.FT.
UTILITY AREA	- 40.90 SQ.FT.
NO OF UNITS	- 169

TOWER 1 (UNIT-10) - 2<sup>ND</sup> TO 34<sup>TH</sup> FLOOR

TOWER 2 (UNIT-8) - GROUND TO 34<sup>TH</sup> FLOOR

TOWER 2 (UNIT-10) - 2<sup>ND</sup> TO 34<sup>TH</sup> FLOOR

TOWER 3 (UNIT-13) - 2<sup>ND</sup> TO 34<sup>TH</sup> FLOOR

TOWER 4 (UNIT-3) - GROUND TO 34<sup>TH</sup> FLOOR



## 3 BED: TYPE B (WEST) : 1596 SQ.FT.



**KEY PLAN**

### 3 BED TYPE B (WEST)

SALE AREA	– 1596 SQ.FT.
CARPET AREA	– 979.85 SQ.FT.
BALCONY AREA	– 97.63 SQ.FT.
UTILITY AREA	– 40.90 SQ.FT.
NO OF UNITS	– 136

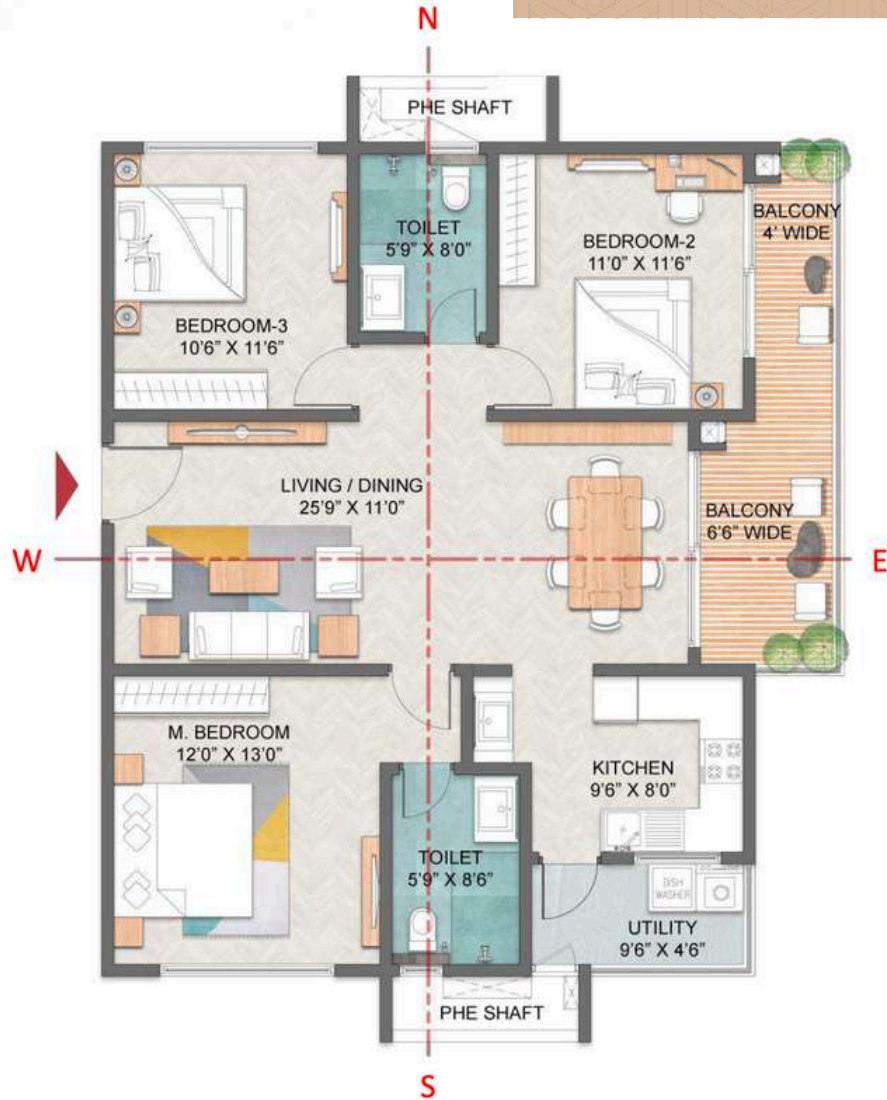
**TOWER 1 (UNIT-9)** – GROUND TO 34<sup>TH</sup> FLOOR

**TOWER 2 (UNIT-7)** – GROUND TO 18<sup>TH</sup> FLOOR  
20<sup>TH</sup> TO 28<sup>TH</sup> FLOOR  
30<sup>TH</sup> TO 34<sup>TH</sup> FLOOR

**TOWER 2 (UNIT-9)** – GROUND TO 34<sup>TH</sup> FLOOR

**TOWER 4 (UNIT-4)** – GROUND TO 18<sup>TH</sup> FLOOR  
20<sup>TH</sup> TO 28<sup>TH</sup> FLOOR  
30<sup>TH</sup> TO 34<sup>TH</sup> FLOOR

# 3 BED: TYPE C (WEST) : 1571 SQ.FT.



**KEY PLAN**

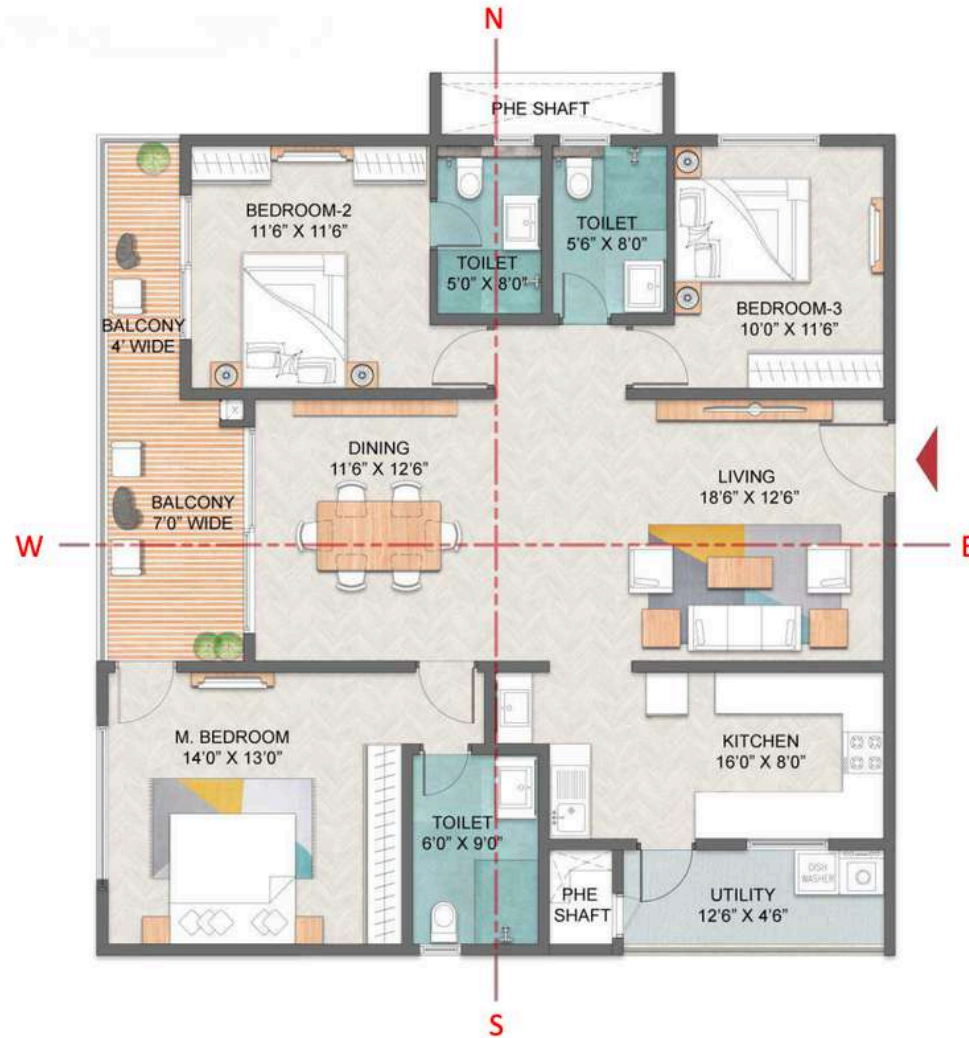
## 3 BED TYPE C (WEST)

SALE AREA	– 1571 SQ.FT.
CARPET AREA	– 949.49 SQ.FT.
BALCONY AREA	– 105.38 SQ.FT.
UTILITY AREA	– 42.73 SQ.FT.
NO OF UNITS	– 33

**TOWER 3 (UNIT-4)** – GROUND TO 18<sup>TH</sup> FLOOR  
20<sup>TH</sup> TO 28<sup>TH</sup> FLOOR  
30<sup>TH</sup> TO 34<sup>TH</sup> FLOOR



# 3 BED: TYPE D (EAST) : 1928 SQ.FT.



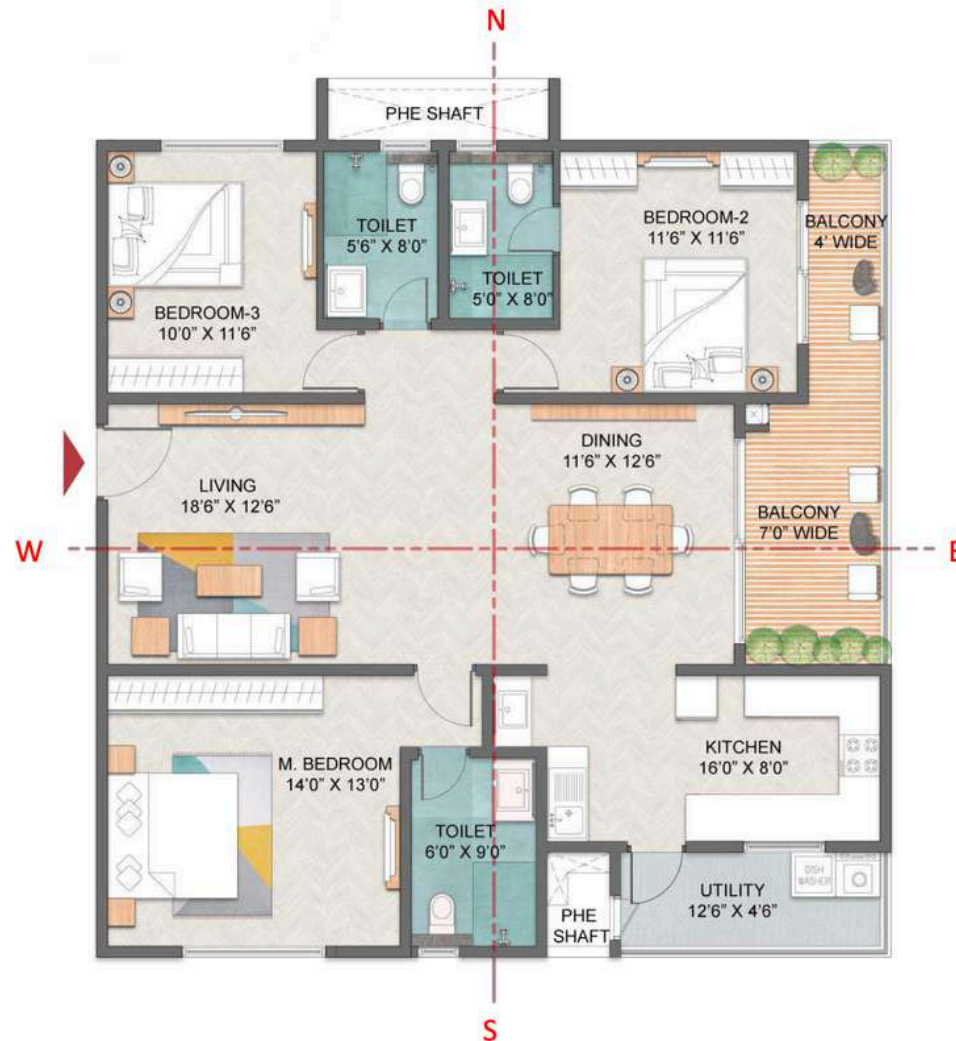
**KEY PLAN**

## 3 BED TYPE D (EAST)

SALE AREA	- 1928 SQ.FT.
CARPET AREA	- 1185.65 SQ.FT.
BALCONY AREA	- 120.88 SQ.FT.
UTILITY AREA	- 55.97 SQ.FT.
NO OF UNITS	- 96

**TOWER 3 (UNIT-7, 8 & 9) - 2<sup>ND</sup> TO 33<sup>RD</sup> FLOOR**

## 3 BED: TYPE E (WEST) : 1928 SQ.FT.



**KEY PLAN**

### 3 BED TYPE E (WEST)

SALE AREA	– 1928 SQ.FT.
CARPET AREA	– 1185.65 SQ.FT.
BALCONY AREA	– 120.88 SQ.FT.
UTILITY AREA	– 55.97 SQ.FT.
NO OF UNITS	– 173

TOWER 1 (UNIT-11) – GROUND TO 34<sup>TH</sup> FLOOR

TOWER 3 (UNIT-5) – GROUND TO 34<sup>TH</sup> FLOOR

TOWER 4 (UNIT-6) – 2<sup>ND</sup> TO 34<sup>TH</sup> FLOOR

TOWER 4 (UNIT-7 & 8) – GROUND TO 34<sup>TH</sup> FLOOR



## 3 BED: TYPE F (EAST) : 2101 SQ.FT.



**KEY PLAN**

### 3 BED TYPE F (EAST)

SALE AREA	- 2101 SQ.FT.
CARPET AREA	- 1318.37 SQ.FT.
BALCONY AREA	- 110.44 SQ.FT.
UTILITY AREA	- 53.60 SQ.FT.
NO OF UNITS	- 70

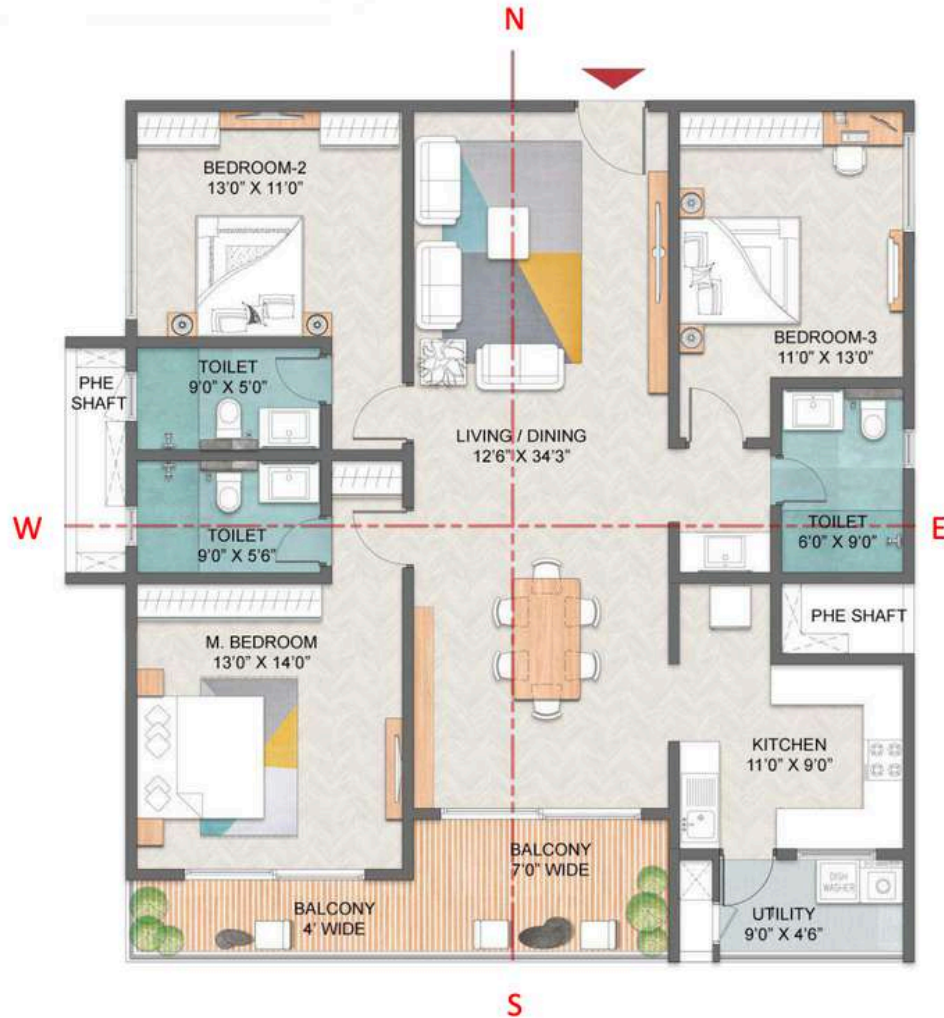
**TOWER 1 (UNIT-6 & 8) - GROUND TO 34<sup>TH</sup> FLOOR**



LIVING CUM DINING



## 3 BED: TYPE G (NORTH) : 2091 SQ.FT.



### 3 BED TYPE G (NORTH)

SALE AREA	– 2091 SQ.FT.
CARPET AREA	– 1312.78 SQ.FT.
BALCONY AREA	– 128.09 SQ.FT.
UTILITY AREA	– 40.58 SQ.FT.
NO OF UNITS	– 350

TOWER 1 (UNIT-2, 3, & 4) – GROUND TO 34<sup>TH</sup> FLOOR

TOWER 2 (UNIT-2, 3, & 4) – GROUND TO 34<sup>TH</sup> FLOOR

TOWER 3 (UNIT-2 & 3) – GROUND TO 34<sup>TH</sup> FLOOR

TOWER 4 (UNIT-10 & 11) – GROUND TO 34<sup>TH</sup> FLOOR

# 3 BED: TYPE H (WEST) : 2083 SQ.FT.



**KEY PLAN**

## 3 BED TYPE H (WEST)

SALE AREA	– 2083 SQ.FT.
CARPET AREA	– 1320.10 SQ.FT.
BALCONY AREA	– 106.99 SQ.FT.
UTILITY AREA	– 47.15 SQ.FT.
NO OF UNITS	– 103

**TOWER 1 (UNIT-7)** – GROUND TO 18<sup>TH</sup> FLOOR  
20<sup>TH</sup> TO 28<sup>TH</sup> FLOOR  
30<sup>TH</sup> TO 34<sup>TH</sup> FLOOR

**TOWER 3 (UNIT-12)** – GROUND TO 34<sup>TH</sup> FLOOR

**TOWER 4 (UNIT-2)** – GROUND TO 34<sup>TH</sup> FLOOR



## 3 BED: TYPE J (NORTH) : 2429 SQ.FT.



**KEY PLAN**

### 4 BED TYPE J (NORTH)

SALE AREA	- 2429 SQ.FT.
CARPET AREA	- 1503.73 SQ.FT.
BALCONY AREA	- 172.44 SQ.FT.
UTILITY AREA	- 44.35 SQ.FT.
NO OF UNITS	- 105

TOWER 1 (UNIT-5) - GROUND TO 34<sup>TH</sup> FLOOR

TOWER 2 (UNIT-5) - GROUND TO 34<sup>TH</sup> FLOOR

TOWER 4 (UNIT-12) - GROUND TO 34<sup>TH</sup> FLOOR

## 3 BED: TYPE K (WEST) : 2451 SQ.FT.



**KEY PLAN**

### 4 BED TYPE K (WEST)

SALE AREA	— 2451 SQ.FT.
CARPET AREA	— 1555.61 SQ.FT.
BALCONY AREA	— 140.15 SQ.FT.
UTILITY AREA	— 53.60 SQ.FT.
NO OF UNITS	— 70

TOWER 2 (UNIT-11) — GROUND TO 34<sup>TH</sup> FLOOR

TOWER 4 (UNIT-5) — GROUND TO 34<sup>TH</sup> FLOOR





KITCHEN

## 4 BED: TYPE L (EAST) : 2407 SQ.FT.



**KEY PLAN**

### 4 BED TYPE L (EAST)

<b>SALE AREA</b>	– 2407 SQ.FT.
<b>CARPET AREA</b>	– 1511.05 SQ.FT.
<b>BALCONY AREA</b>	– 154.89 SQ.FT.
<b>UTILITY AREA</b>	– 55.87 SQ.FT.
<b>NO OF UNITS</b>	– 70

**TOWER 2 (UNIT-6)** – GROUND TO 34<sup>TH</sup> FLOOR

**TOWER 4 (UNIT-9)** – GROUND TO 34<sup>TH</sup> FLOOR



# 4 BED: TYPE M (EAST) : 3065 SQ.FT.



## 4 BED TYPE M (EAST)

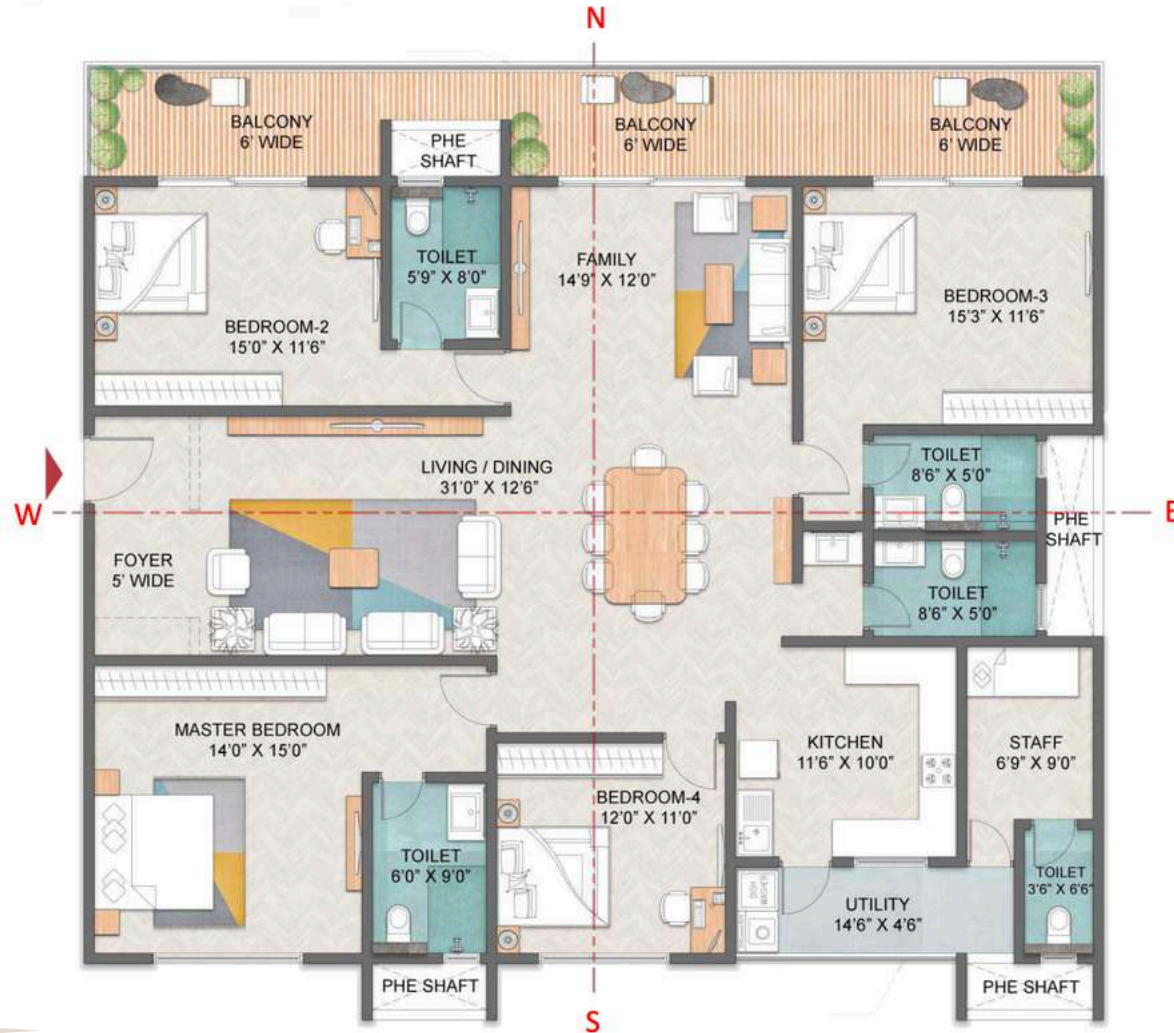
SALE AREA	- 3065 SQ.FT.
CARPET AREA	- 1918.68 SQ.FT.
BALCONY AREA	- 204.73 SQ.FT.
UTILITY AREA	- 65.88 SQ.FT.
NO OF UNITS	- 104

TOWER 3 (UNIT-10) - GROUND TO 33<sup>RD</sup> FLOOR

TOWER 3 (UNIT-11) - GROUND TO 34<sup>TH</sup> FLOOR

TOWER 4 (UNIT-1) - GROUND TO 34<sup>TH</sup> FLOOR

# 4 BED: TYPE N (WEST) : 3233 SQ.FT.



## 4 BED TYPE N (WEST)

SALE AREA	– 3233 SQ.FT.
CARPET AREA	– 1981.11 SQ.FT.
BALCONY AREA	– 265.66 SQ.FT.
UTILITY AREA	– 65.88 SQ.FT.
NO OF UNITS	– 35

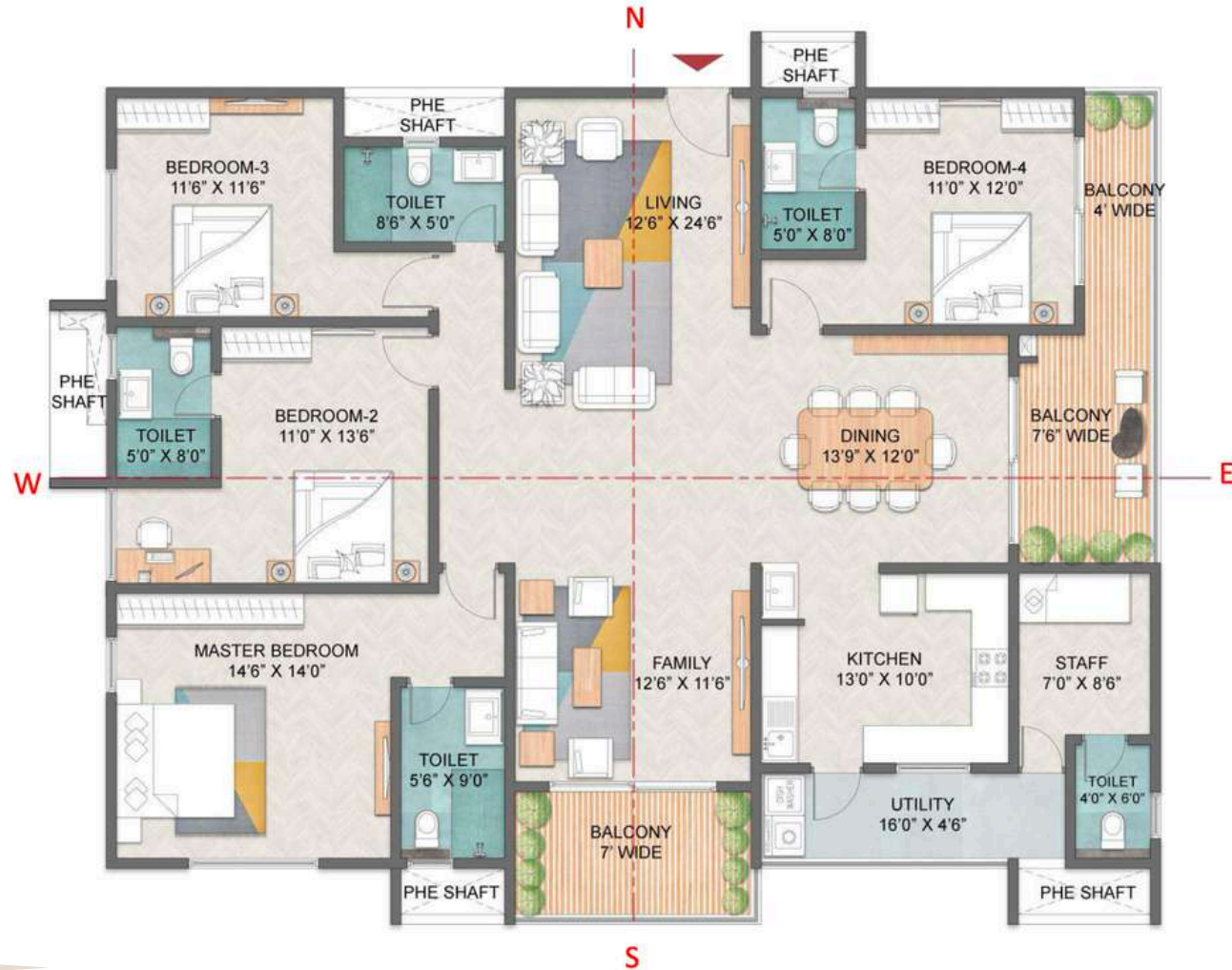
TOWER 3 (UNIT-14) – GROUND TO 34<sup>TH</sup> FLOOR



MASTER BEDROOM



## 4 BED: TYPE P (NORTH) : 3036 SQ.FT.



**KEY PLAN**

### 4 BED TYPE P (NORTH)

SALE AREA	– 3036 SQ.FT.
CARPET AREA	– 1880.47 SQ.FT.
BALCONY AREA	– 206.56 SQ.FT.
UTILITY AREA	– 72.23 SQ.FT.
NO OF UNITS	– 105

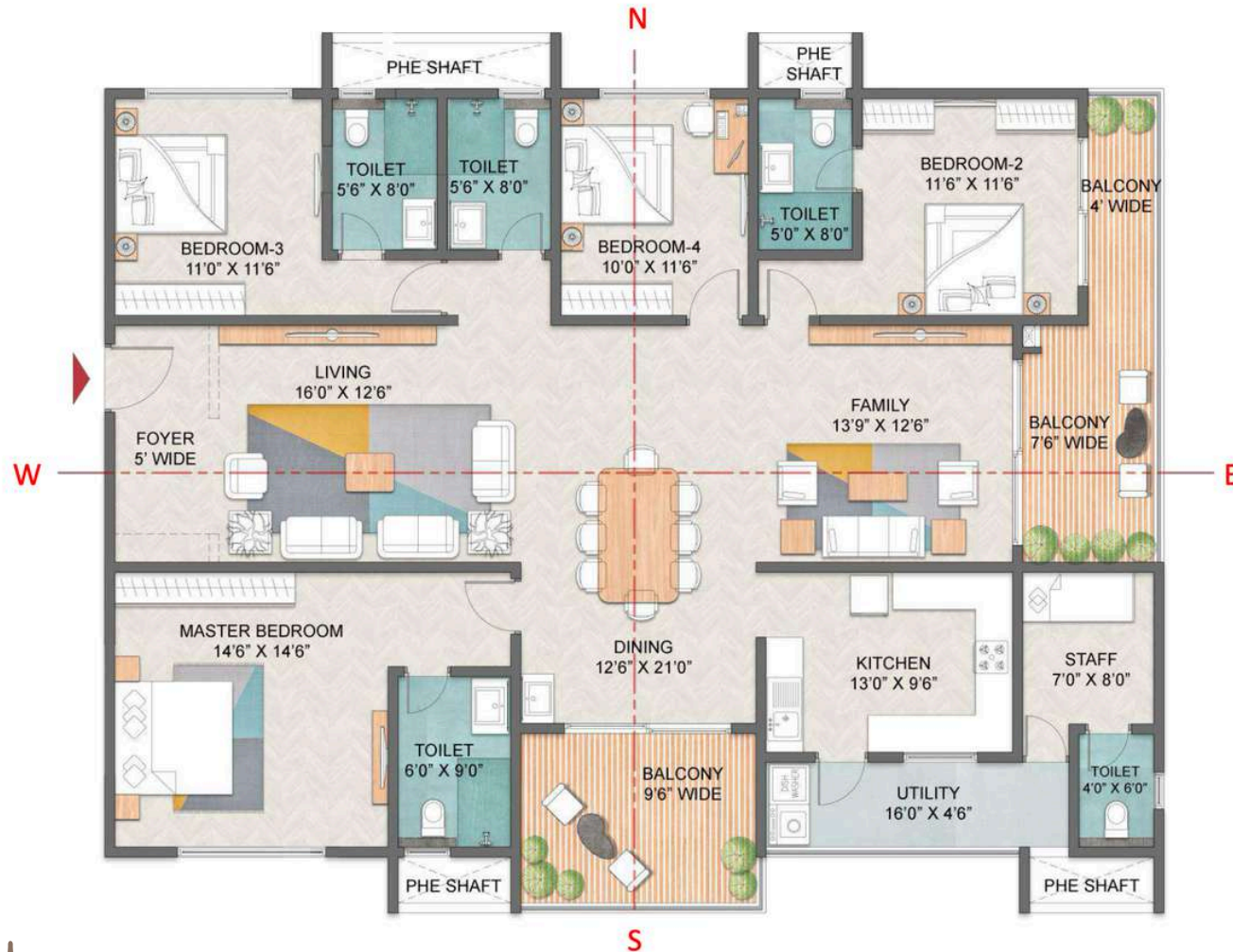
TOWER 1 (UNIT-1) – GROUND TO 34<sup>TH</sup> FLOOR

TOWER 2 (UNIT-1) – GROUND TO 34<sup>TH</sup> FLOOR

TOWER 3 (UNIT-1) – GROUND TO 34<sup>TH</sup> FLOOR



# 4 BED: TYPE Q (WEST) : 3051 SQ.FT.



**KEY PLAN**

## 4 BED TYPE Q (WEST)

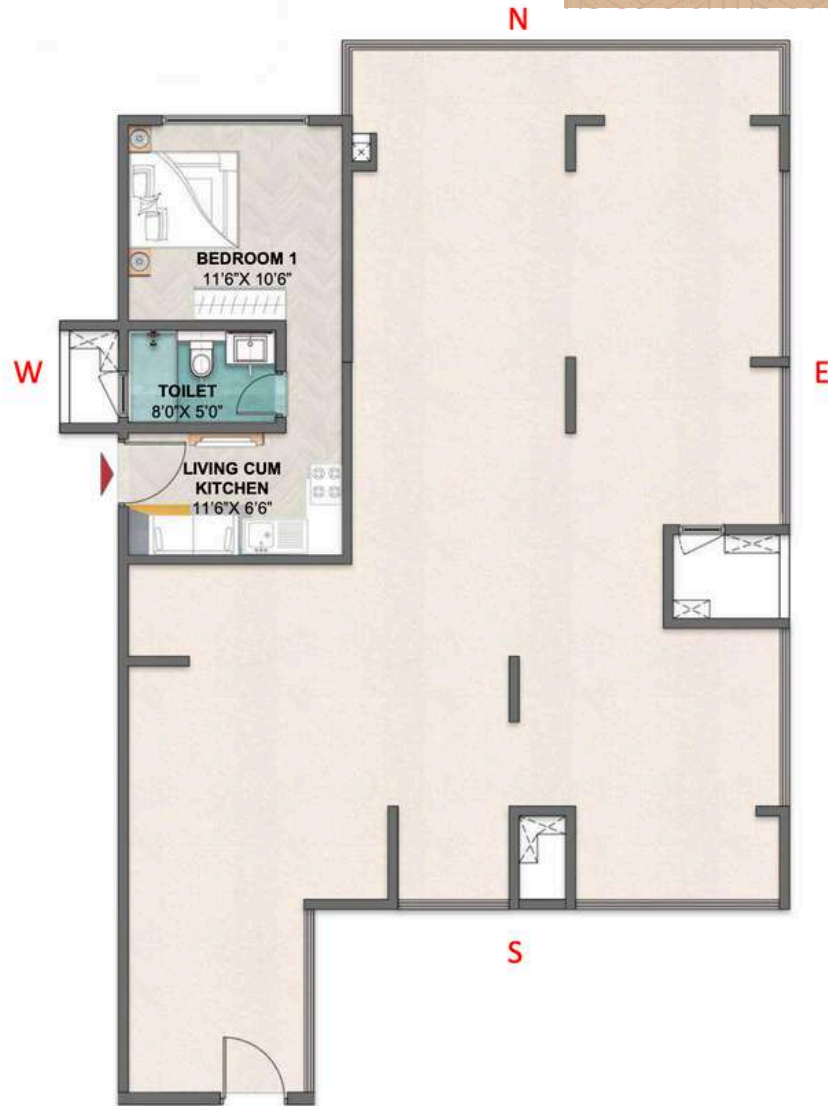
SALE AREA	– 3051 SQ.FT.
CARPET AREA	– 1862.71 SQ.FT.
BALCONY AREA	– 239.50 SQ.FT.
UTILITY AREA	– 72.23 SQ.FT.
NO OF UNITS	– 35

**TOWER 3 (UNIT-6) – GROUND TO 34<sup>TH</sup> FLOOR**

# 1 BED: TYPE H1

(WEST) : 401 SQ.FT

(19TH AND 29TH FLOOR)



## 3 BED TYPE H1 (WEST)

SALE AREA	- 401 SQ.FT.
CARPET AREA	- 266.19 SQ.FT.
BALCONY AREA	- NIL
UTILITY AREA	- NIL
NO OF UNITS	- 2

## KEY PLAN

TOWER 1 (UNIT-7) -19<sup>TH</sup> FLOOR AND 29<sup>TH</sup> FLOOR



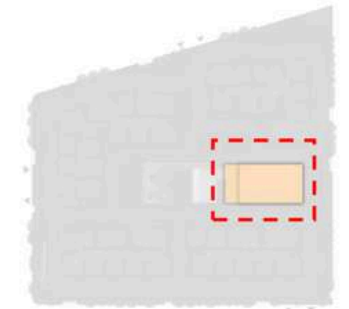


# CLUBHOUSE



# CLUBHOUSE

## GROUND FLOOR PLAN

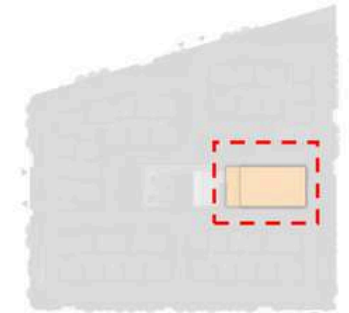
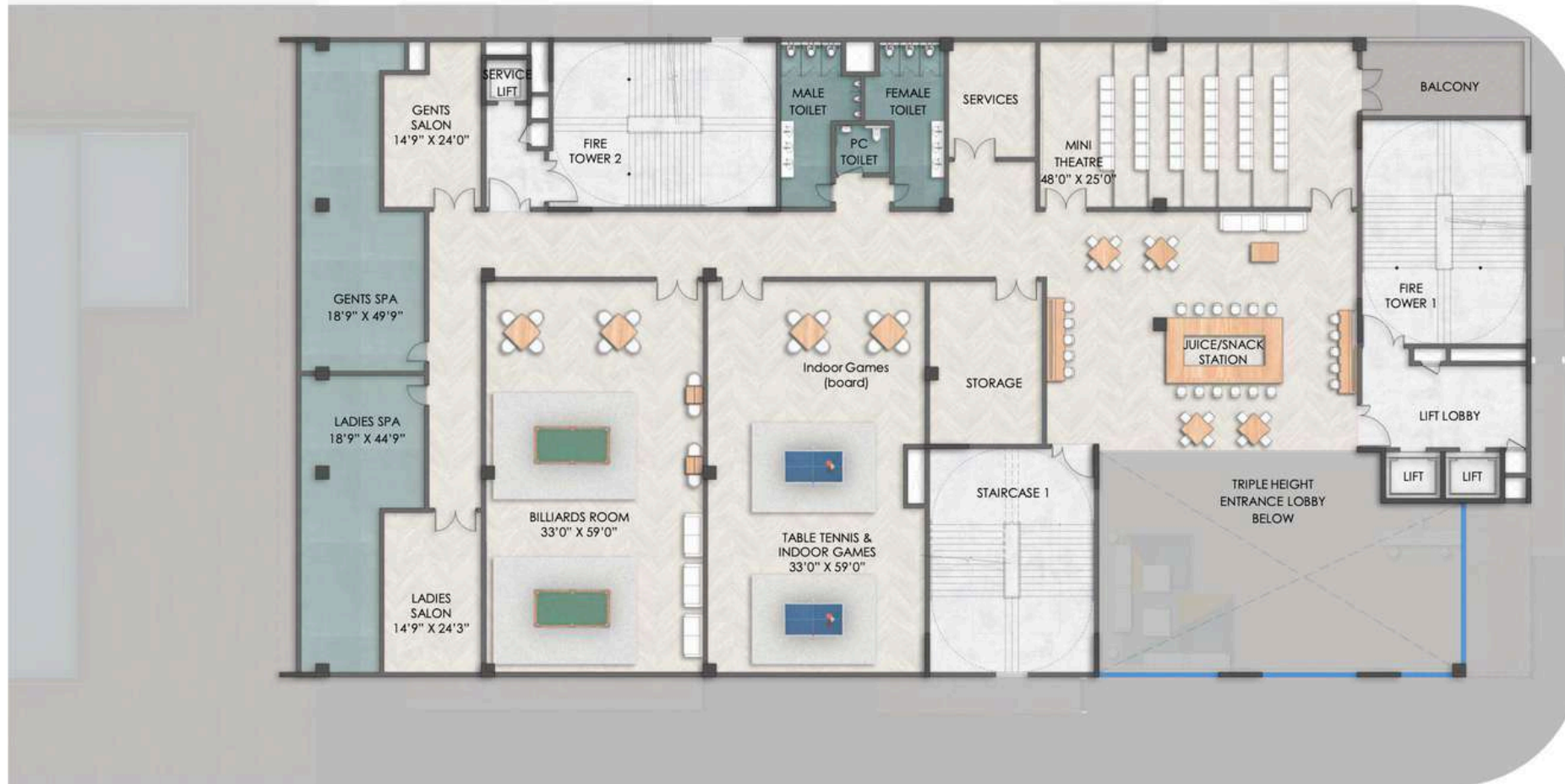


KEY PLAN



# CLUBHOUSE

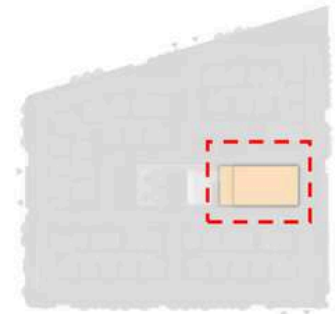
## FIRST FLOOR PLAN



KEY PLAN

# CLUBHOUSE

## SECOND FLOOR PLAN

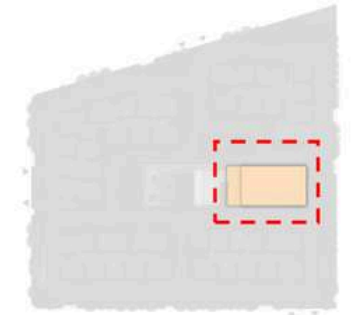


## KEY PLAN



# CLUBHOUSE

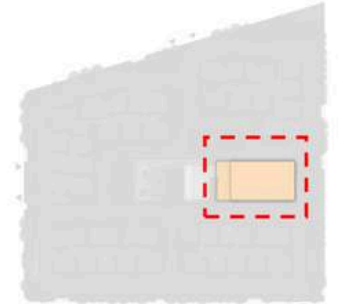
## THIRD FLOOR PLAN



KEY PLAN

# CLUBHOUSE

## FOURTH FLOOR PLAN

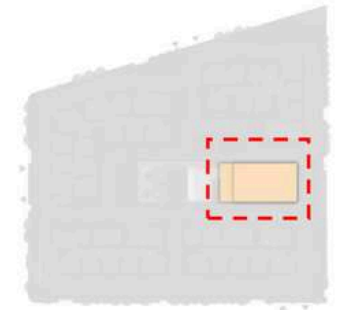


KEY PLAN



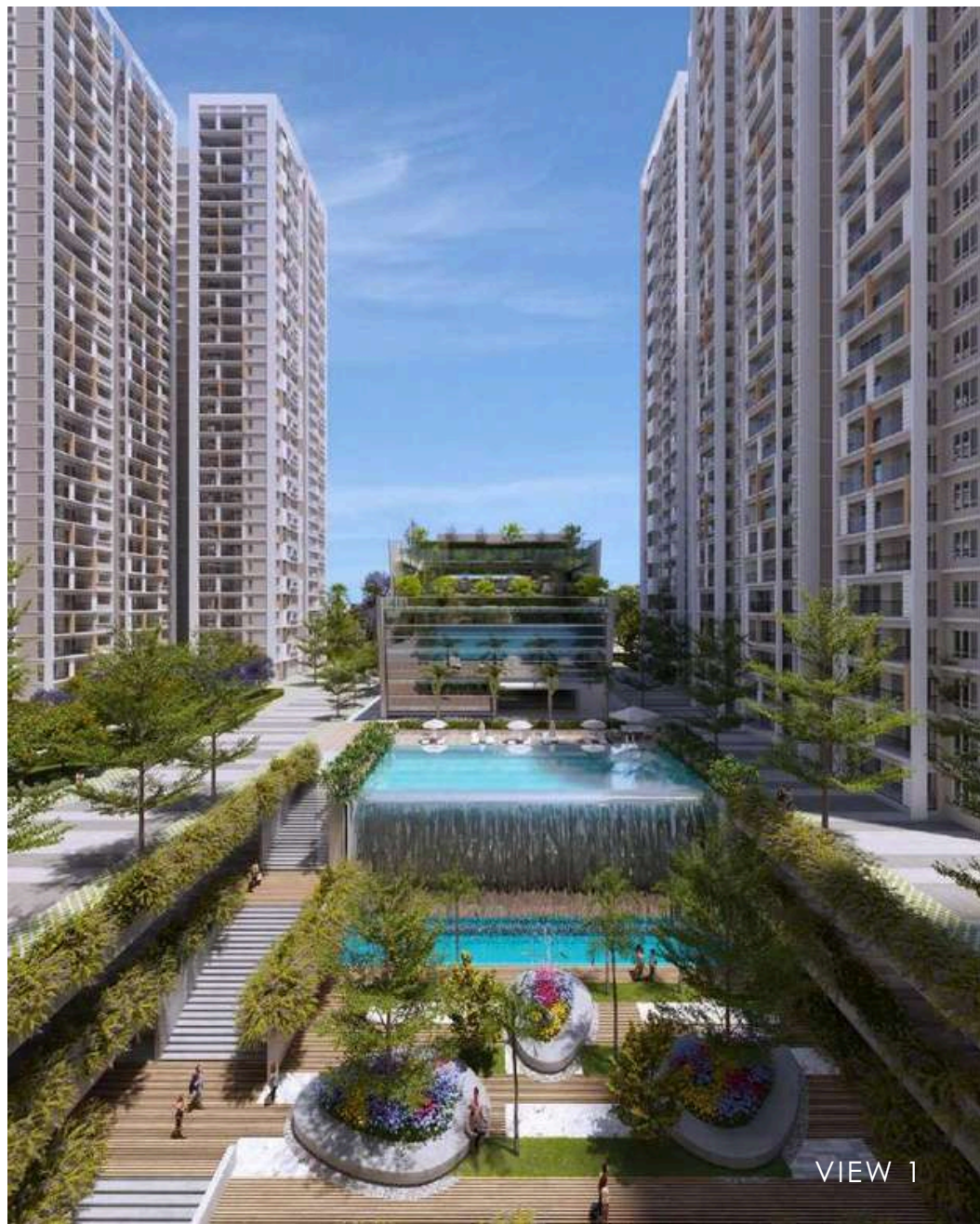
# CLUBHOUSE

## FIFTH FLOOR PLAN



**KEY PLAN**





KEY PLAN



# SPECIFICATIONS

## **Structure:**

- RCC Structure in shear wall technology

## **Lobby & Stair Case:**

- Elegant lobby flooring in Ground floor.
- Basement and all upper floor lobbies flooring in vitrified tiles.
- Lift cladding in granite as per architect's design.
- Service staircase and service lobby in Kota Stone, granite or cement tiles on Treads.
- All lobby walls will be finished with a combination of texture paint and ceilings in distemper.

## **Lifts:**

- Lifts of suitable size and capacity will be provided in all towers

## **Apartment Flooring:**

- Vitrified tiles in the foyer, living, dining, corridors, all bedrooms.
- Ceramic tiles in the Balcony.

## **Kitchen:**

- Vitrified Tiles for Flooring in Kitchen & Utility
- Provision for RO, Instant Geyser, Dishwasher, Chimney

## **Toilets:**

- Ceramic tiles for flooring, with ceramic tiles on walls up to false ceiling
- All toilets with counter top wash basins.
- EWCs and chrome plated fittings.
- Chrome plated tap with shower mixer.
- Geysers in all toilets.
- Suspended pipelines in all toilets concealed with false ceiling
- Provision for exhaust fans

## **Internal Doors:**

- Main Door frame in Engineered Wood and laminated flush shutters
- Internal Doors - Engineered Wood frames with laminated flush shutters

## **External Doors and Windows**

- UPVC frames and sliding shutters for all external doors or a combination of both wherever required.
- UPVC framed windows with clear glass

## **Painting:**

- Premium External Emulsion on exterior walls
- Internal walls and ceiling in Emulsion Paint.
- All railings in enamel paint.

## **Electrical:**

- All electrical wiring is concealed in PVC insulated copper wires with modular switches.
- Sufficient power outlets and light points provided
- ELCB and individual meters will be provided for all apartments.

## **Telecommunication:**

- TV & Data TV points provided in the living and all bedrooms.
- Data points provided in living/study and bedrooms.

## **Security System:**

- Security cabins at all entrances and exits having CCTV coverage.

## **DG Power:**

- Will be provided for all Common Areas.
- 100% Backup power for all apartments



• HOMES • OFFICES • SHOPPING MALLS • HOTELS • INTERIORS • WAREHOUSING •

Bengaluru | Chennai | Goa | Hyderabad | Kerala | Mangaluru | Delhi-NCR  
Mumbai | Ahmedabad | Dubai Sales Office

**Prestige Garden Estates Pvt Ltd**

Prestige Falcon Towers, No.19, Brunton Road, Bengaluru - 560025, Karnataka, INDIA.

E-mail: [properties@prestigeconstructions.com](mailto:properties@prestigeconstructions.com). [www.prestigeconstructions.com](http://www.prestigeconstructions.com)

Dubai Sales Office: [dubai@prestigeconstructions.com](mailto:dubai@prestigeconstructions.com)

**Prestige Group**

Prestige Skytech: 19th floor, tower A.

Financial District, Nanakramguda, Telangana 500032



This brochure is conceptual and has been prepared based on the inputs provided by the Project Architect. This may vary during execution. The Promoter reserves the right to change, alter, add or delete any of the specifications mentioned herein based on site conditions and construction exigencies without prior permission or notice. The external color schemes and detailing of landscape may vary as may be suggested by the Architect considering the site conditions.

The furniture shown in the plans is only for the purpose of illustrating a possible layout and does not form a part of the offering or specifications. All Apartment interior views do not depict the standard wall, color & ceiling finishes and are not part of the offering.

Further, the dimensions mentioned do not consider the plastering thickness and there could be marginal variation in carpet areas.

