

plans.



REIGN FOREST  
Gated Community

APARTMENTS | MALL | MULTIPLEX

# REIGN FOREST

Gated Community

- 5 Towers each 8 Floors, 376 Flats
- Earthquake Resistant Structure Design
- Abutting NH-5
- Club House with Swimming Pool
- No Common Walls
- Landscaped Courts & Children Play Areas
- Breathtaking Panoramic Views
- Well Groomed Interiors
- Peripheral Drive Ways and Green Belt
- Integrated Two Level Car Parking
- Sewerage Treatment Plant
- Rain Water Harvesting
- Provision for Basic Medical Facilities
- Rest Rooms for Supporting Staff
- Generator Back-up for Flats & Common Facilities
- Sub Surface Water Network
- Compound Wall with Solar Fencing



chestnut  
towers...



oakridge  
towers...



maplehedg  
towers...



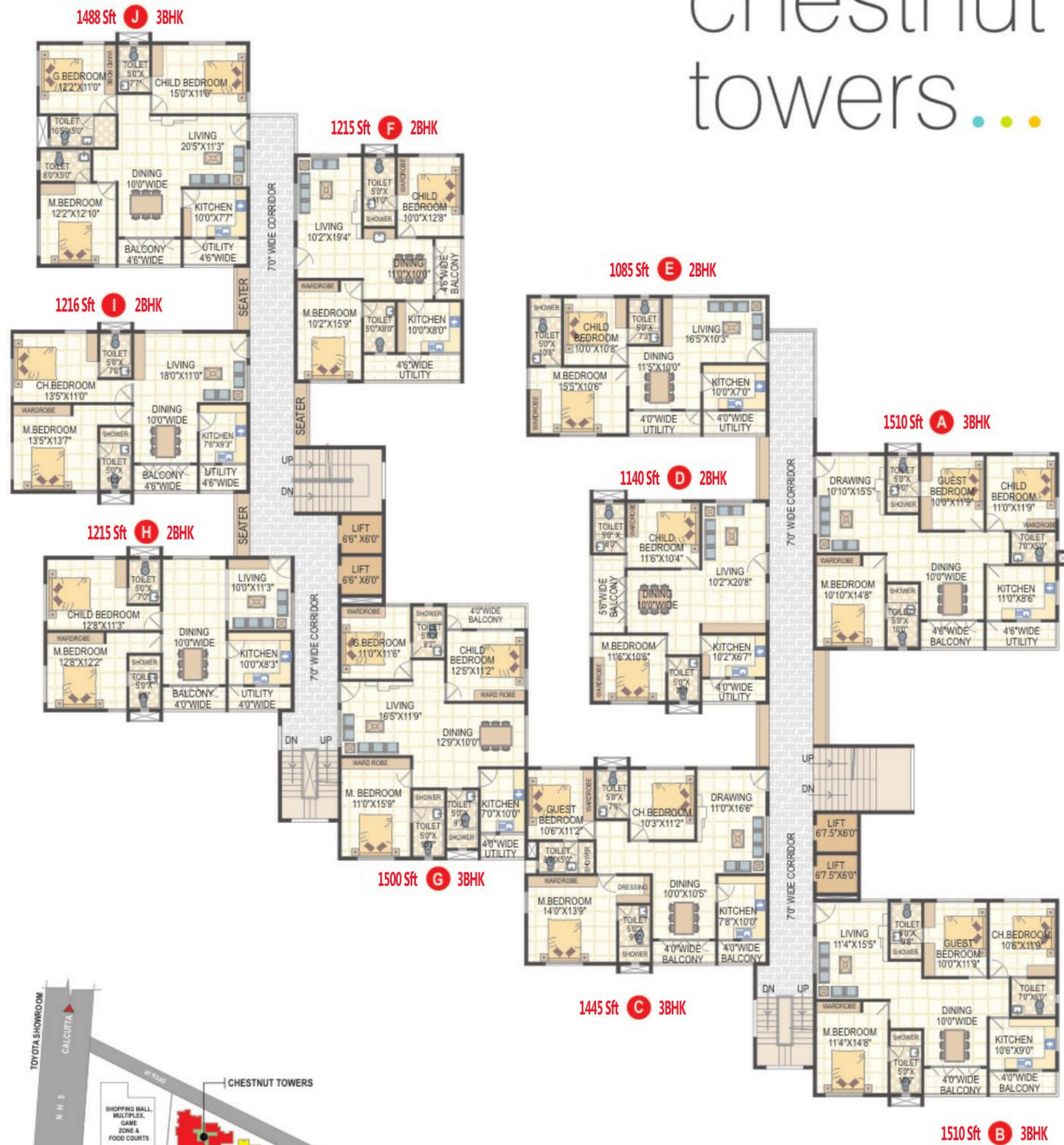
whitepine  
towers...



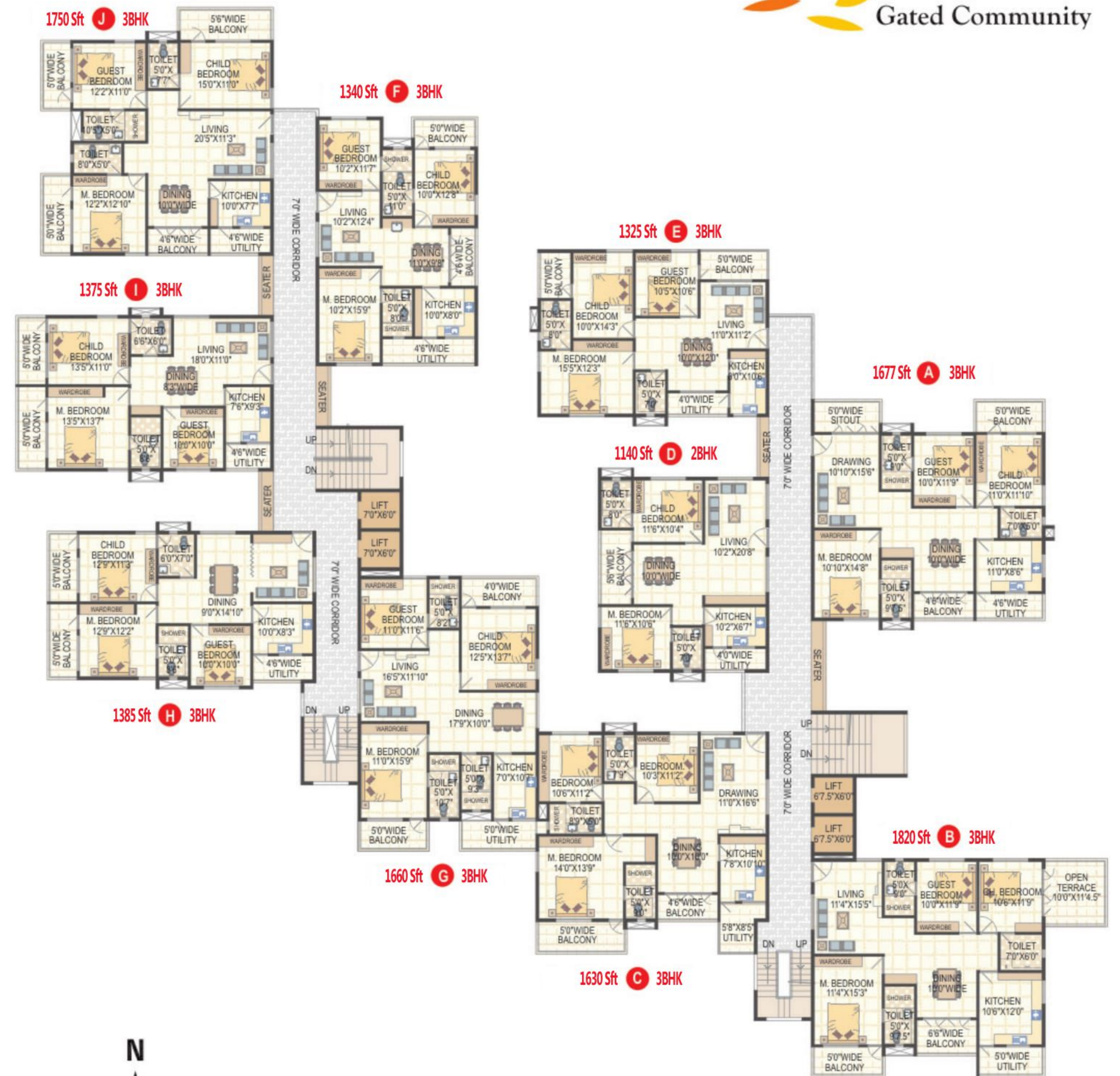
royalpalm  
meadows...

salient  
features

# chestnut towers...

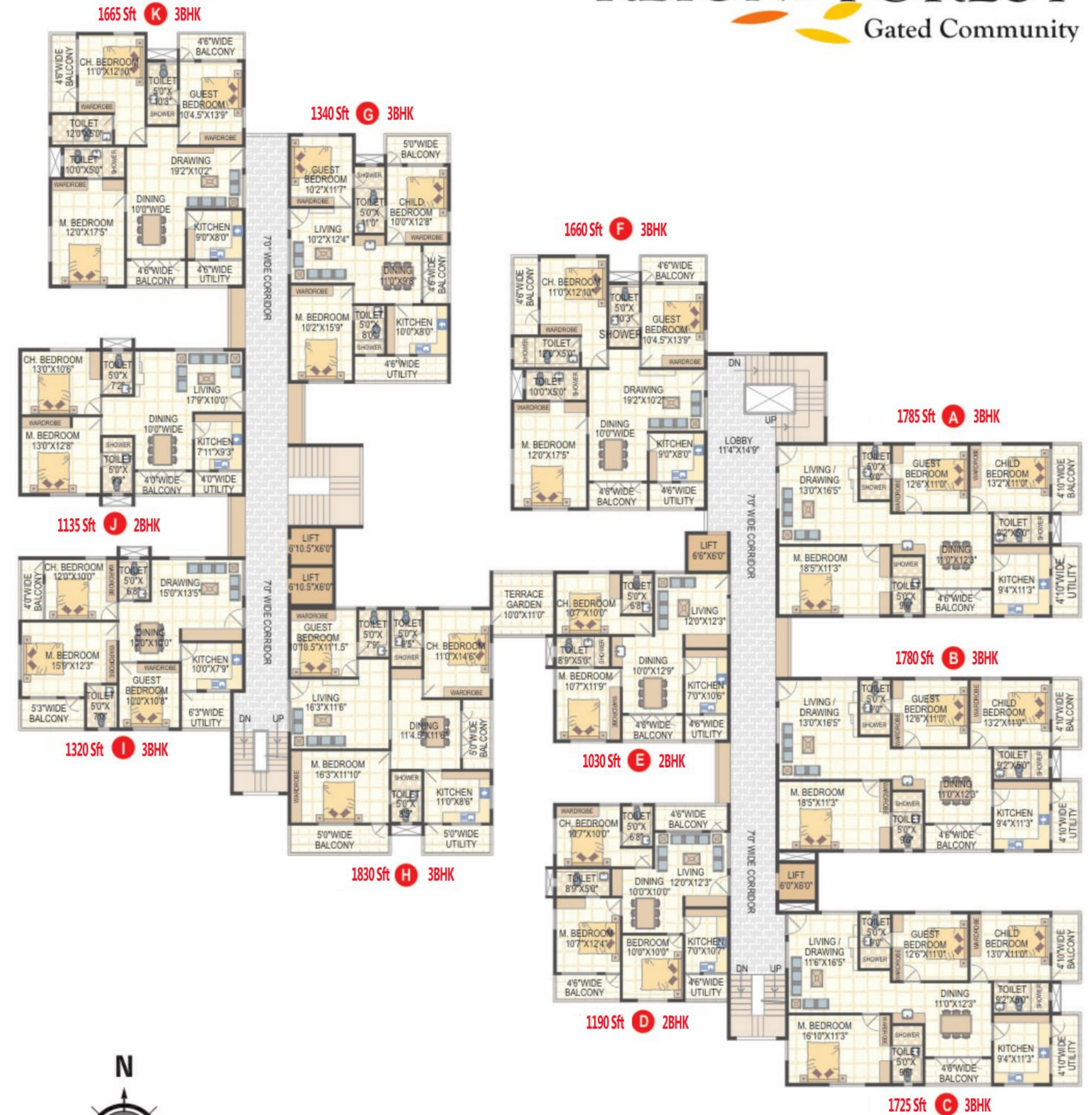
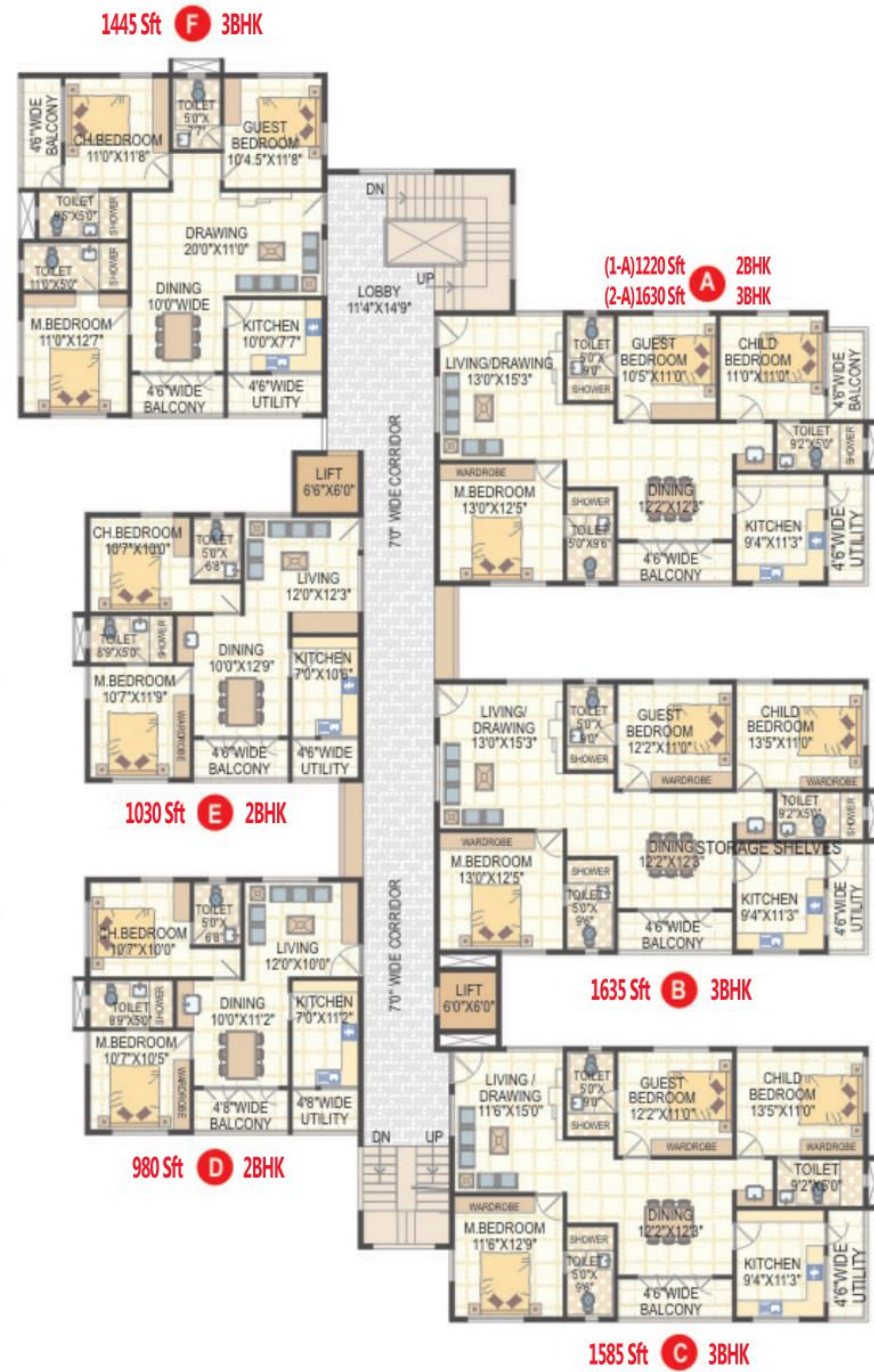


**LEVEL 1 & 2 FLOOR PLANS**



**LEVEL 3 TO 8 FLOOR PLANS**

oakridge  
towers...



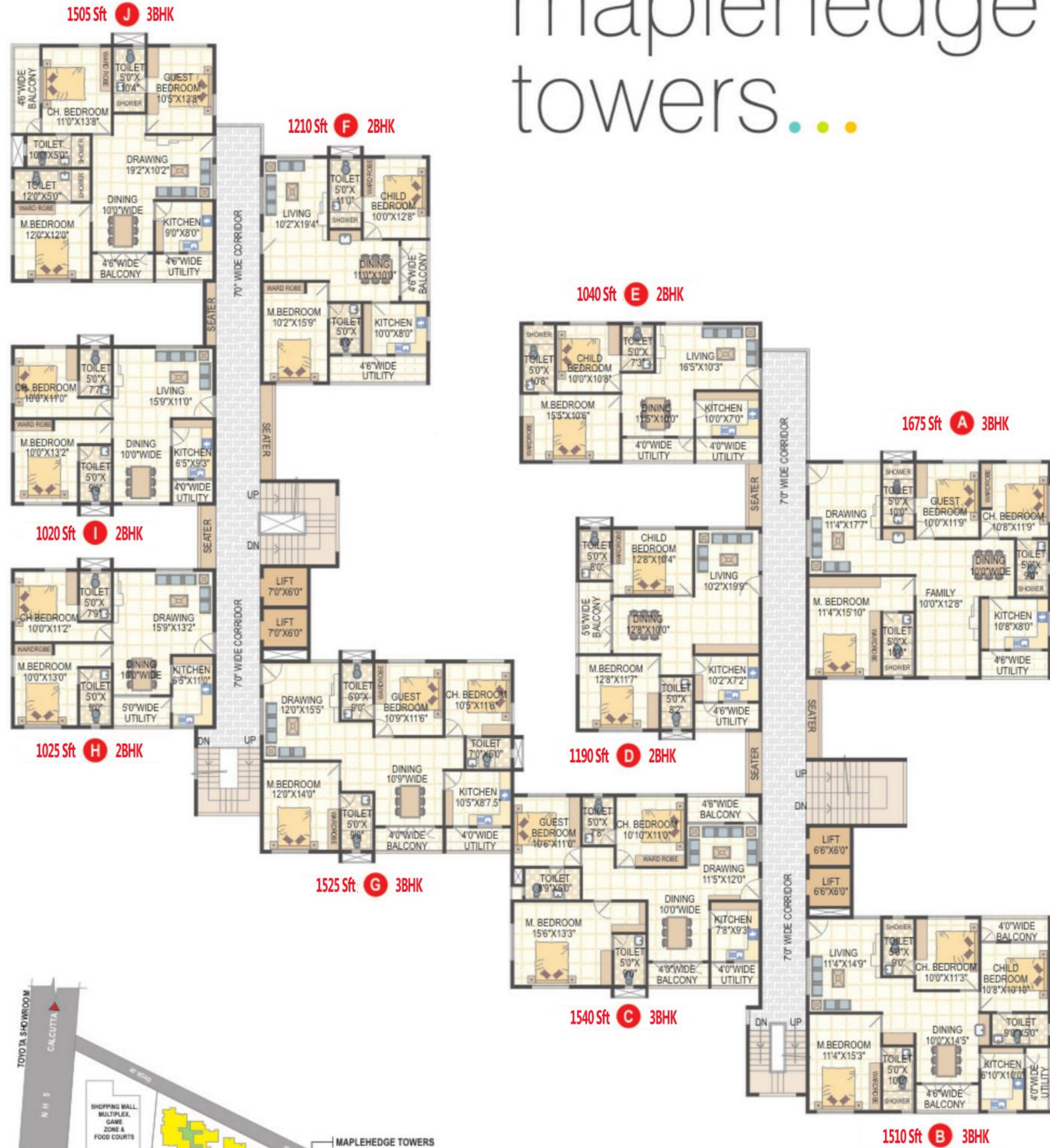
LEVEL 1 & 2 FLOOR PLANS

LEVEL 3 TO 8 FLOOR PLANS

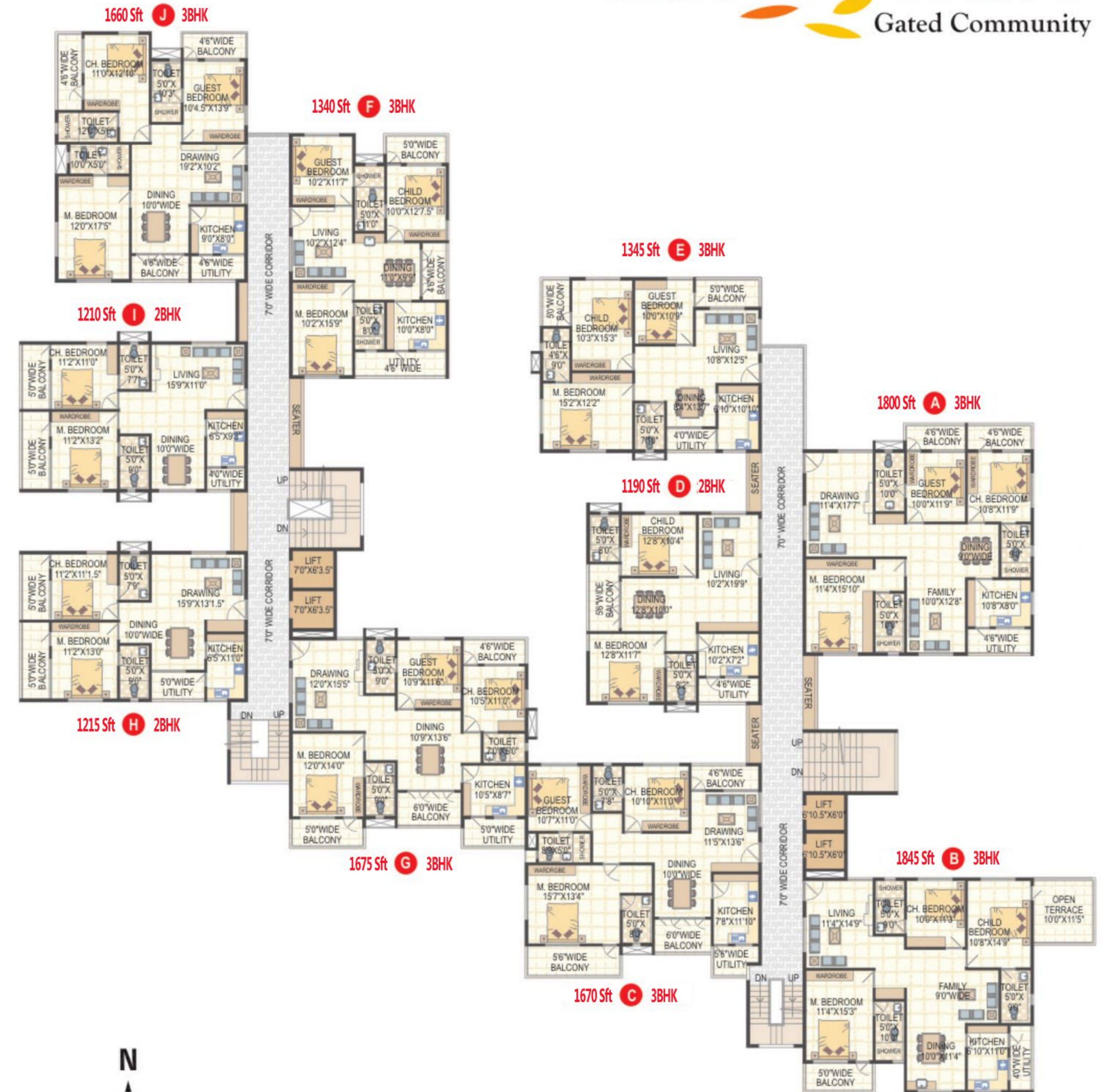
key plan



# maplehedge towers

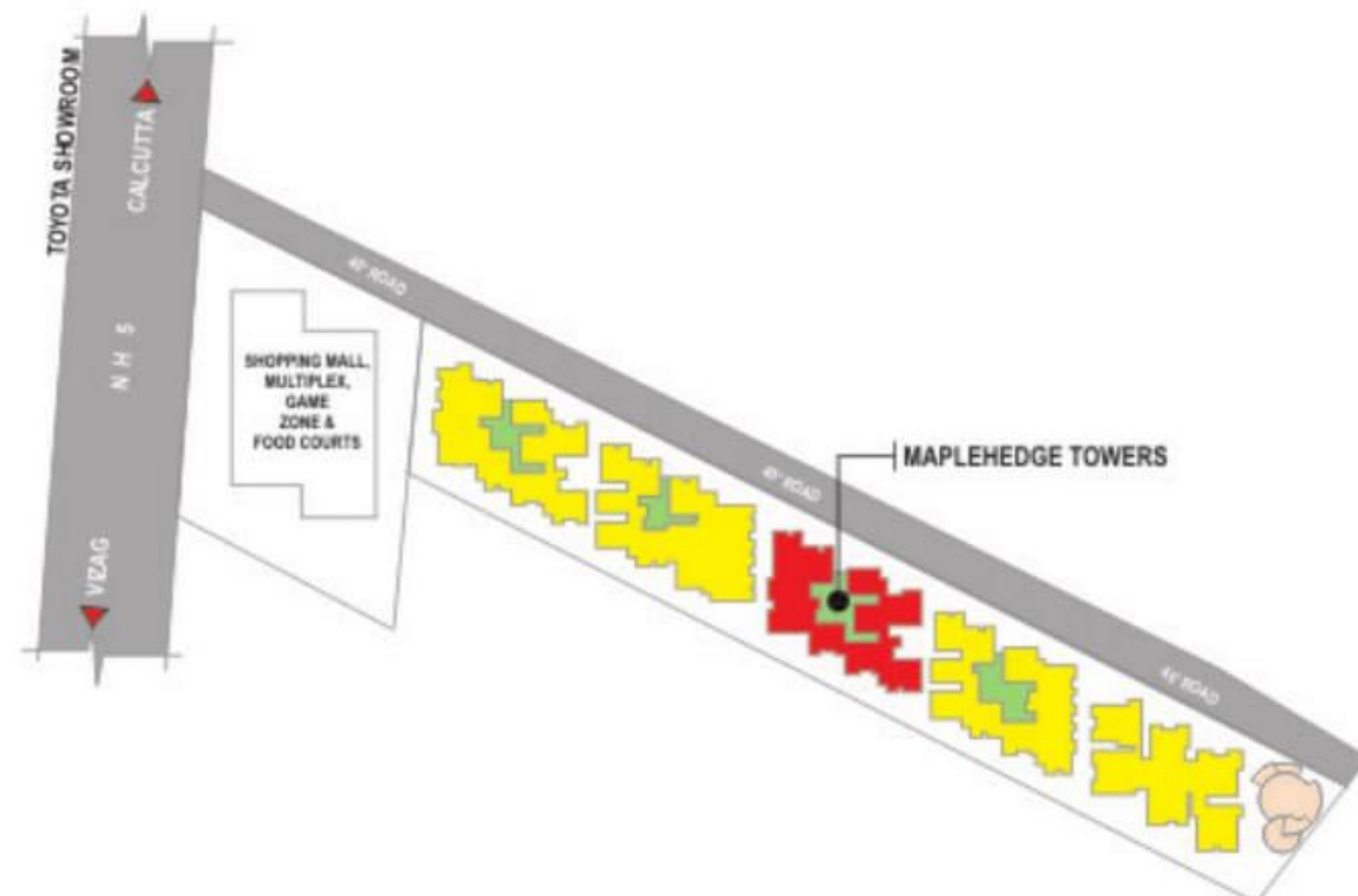


LEVEL 1 & 2 FLOOR PLANS



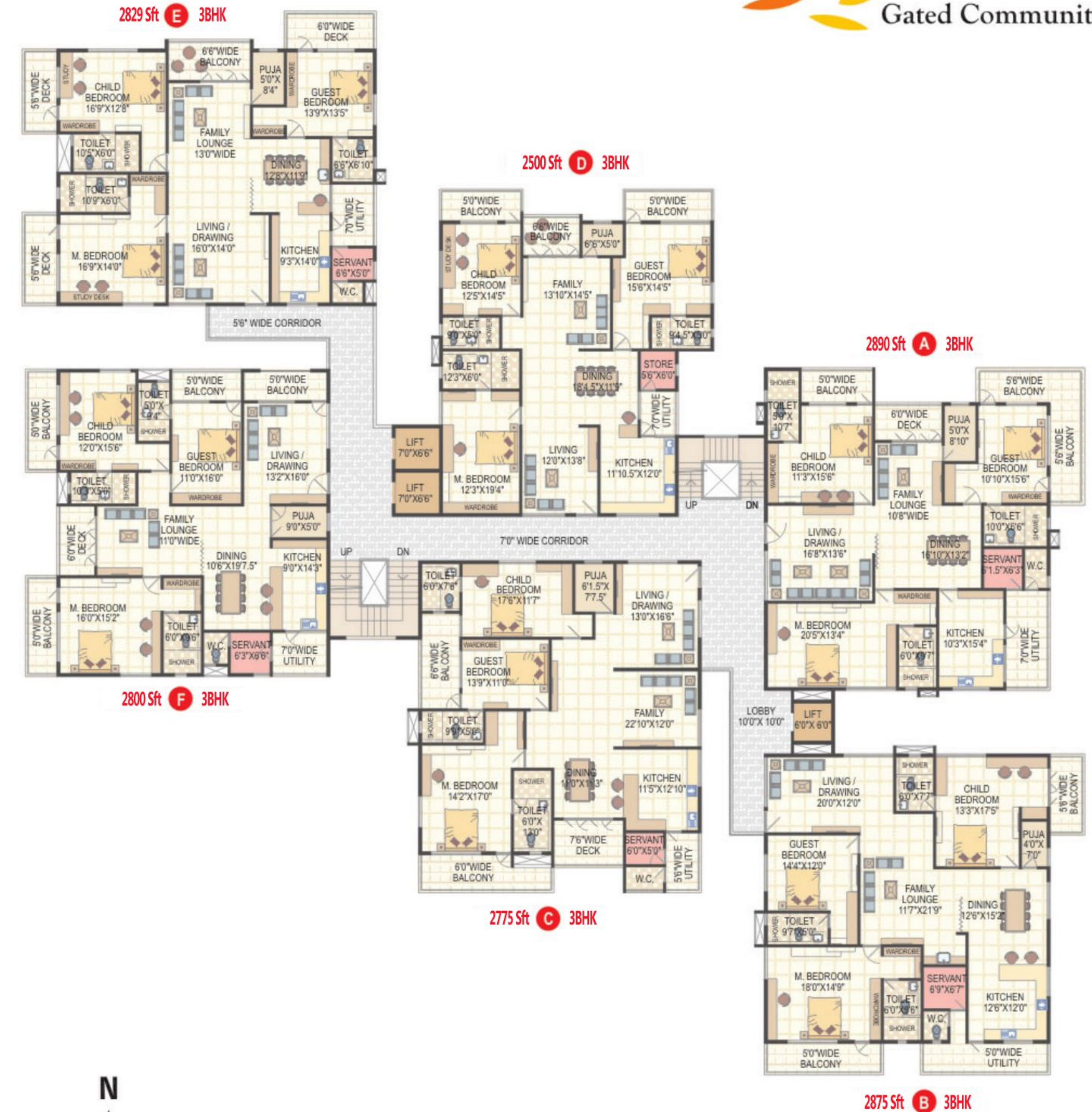
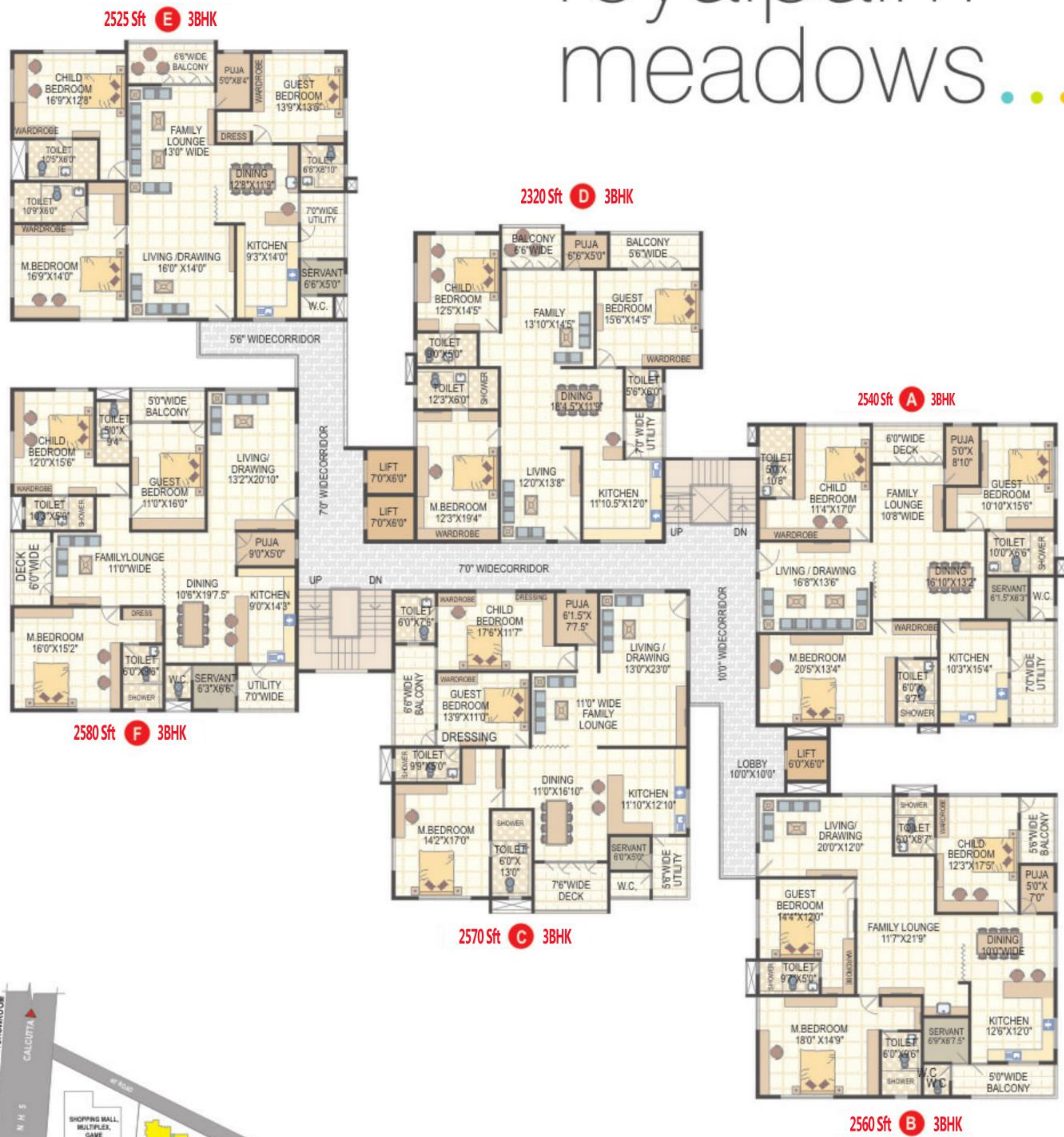
LEVEL 3 TO 8 FLOOR PLANS

key plan

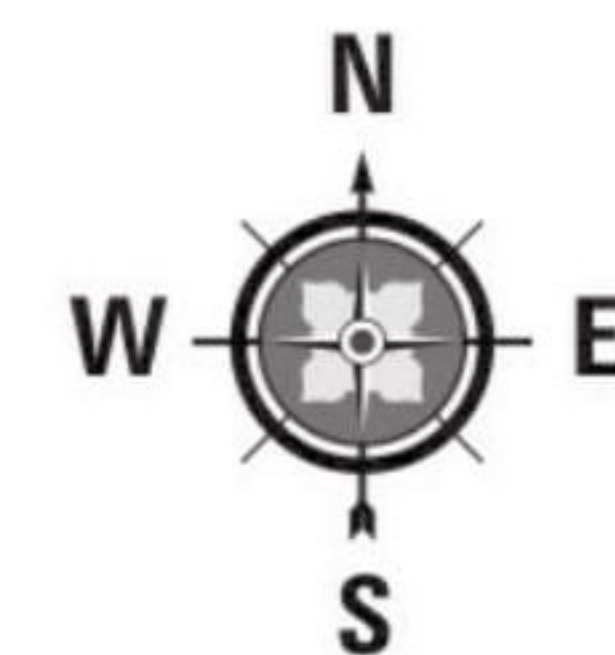
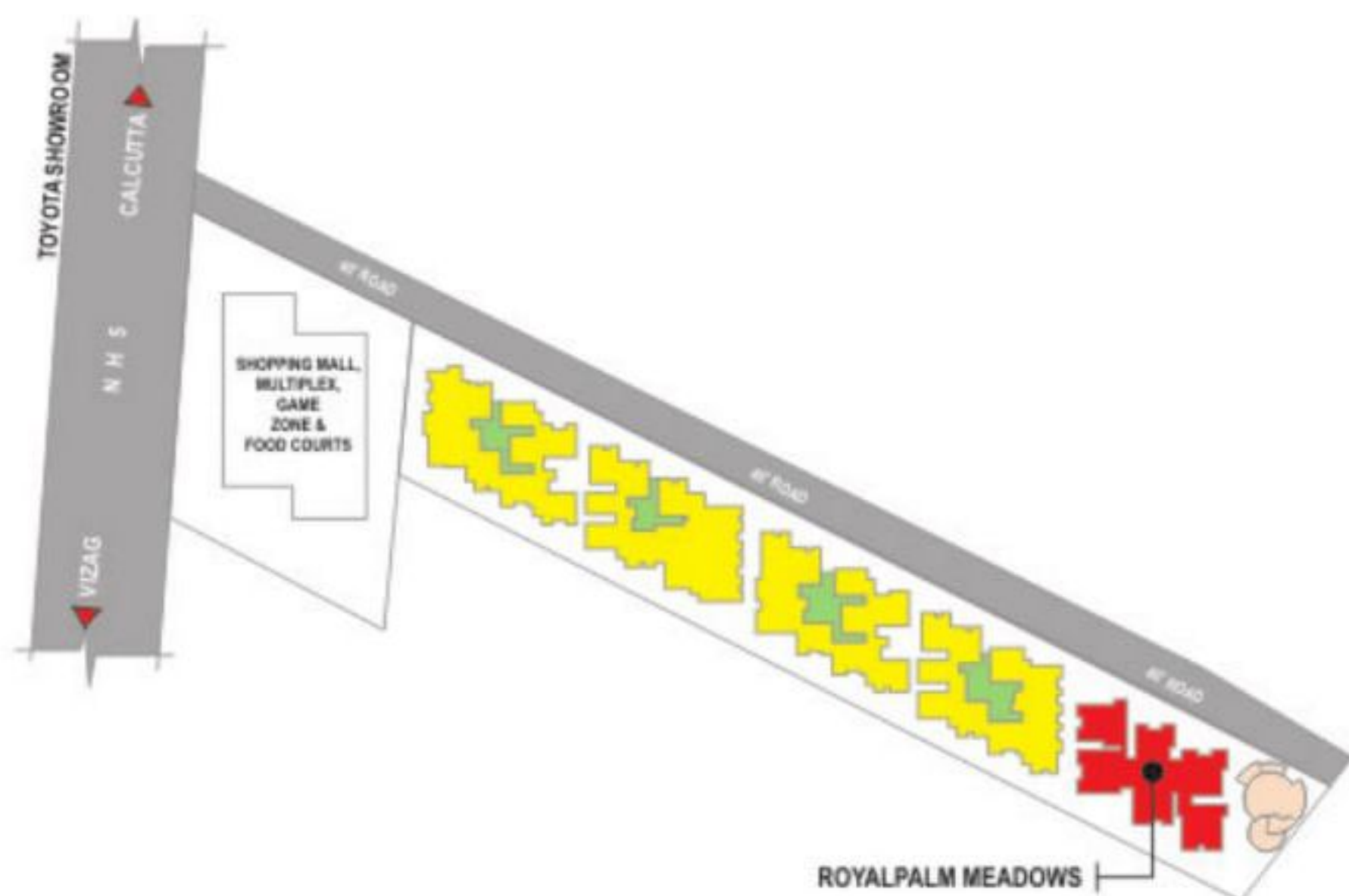




# royalpalm meadows



key plan



LEVEL 1 & 2 FLOOR PLANS

LEVEL 3 TO 8 FLOOR PLANS

# specifications...

## STRUCTURE

Earthquake Resistant - RCC framed structure in accordance with IS code.

## SUPER STRUCTURE

6" External wall and 4 1 / 2" Internal wall with first class moulded clay bricks in cement/ Aerocon with mortar.

## PLASTERING

Internal & External : Double coat of cement plastering for smooth finish.

## DOORS

**Main Door:** B.T. Wood frame flush shutter with Veneer on both sides and Melamine finish with brass hardware.

**Internal:** Malaysian Sal Wood frame with two side laminated & flush shutters with Anodised Aluminum hardware.

**Windows:** UPVC Windows.

## PAINTING

**External:** Birla putty and Texture / emulsion paints of Asian / ICI or equivalent make.

**Internal & Ceiling:** Putty plaster finish, two coats of Acrylic emulsion over a coat of primer.

## FLOORING

In living areas Johnson / Nitco or equivalent Vitrified Tiles of 600mm x 600mm. anti skid tiles in kitchen and bathroom

**Utility and Balconies:** Ceramic tiles.

**Parking Area:** Combination of VDF, paver over PCC bed.

**Corridors and Staircase lift lobbies:** Granite / marble flooring.

## TILE CLADDING AND DADOING

**Kitchen:** Glazed ceramic tile dado upto 3'ft. height above kitchen platform. Granite platform with stainless steel sink & provision for fixing of Aqua-guard. Provision for chimney, Microwave.

**Utility / Wash:** Glazed Ceramic Tiles dado upto 3'ft. height. Provision for washing machine.

## TOILETS

Tile dado up to 7ft. height.

Wash basin of Hindware / Parryware or equivalent make.

Cascade floor mount WC. of Hindware / Parryware or equivalent make.

Hot and cold wall-mixer with shower.

All C.P. Fittings of Jaquar or equivalent make.

## SANITARY & PLUMBING

**Water Supply:** ISI Mark of GI / Kemplast / CPVC Piping or equivalent.

**Drainage:** ISI Mark of PVC / SWG Sanitary Piping.

**Water Treatment:** Sewage Treatment Plant.

## ELECTRICAL

3-phase supply for each unit and individual Meter in panel room.

Concealed copper wiring of Finolex, RR Kables, Polycab or equivalent make.

Power outlets for air-conditioners in all bedrooms.

Miniature Circuit Breakers (MCB) of ISI mark.

Switches are of Legrand / Anchor or equivalent make.

## TELECOM & INTERNET

Points in living & master bedroom.

## CABLE TV

Points in living & all bedrooms.

## LIFT

10-Passengers lift of Johnson / Otis / Kone / Schindler or equivalent make.

## SECURITY

Video door phone in each flat connected to main security room.

Surveillance cameras in basement, ground floor, lift, lobby and staircase.

## GENERATOR

Backup for flats & Common facilities.

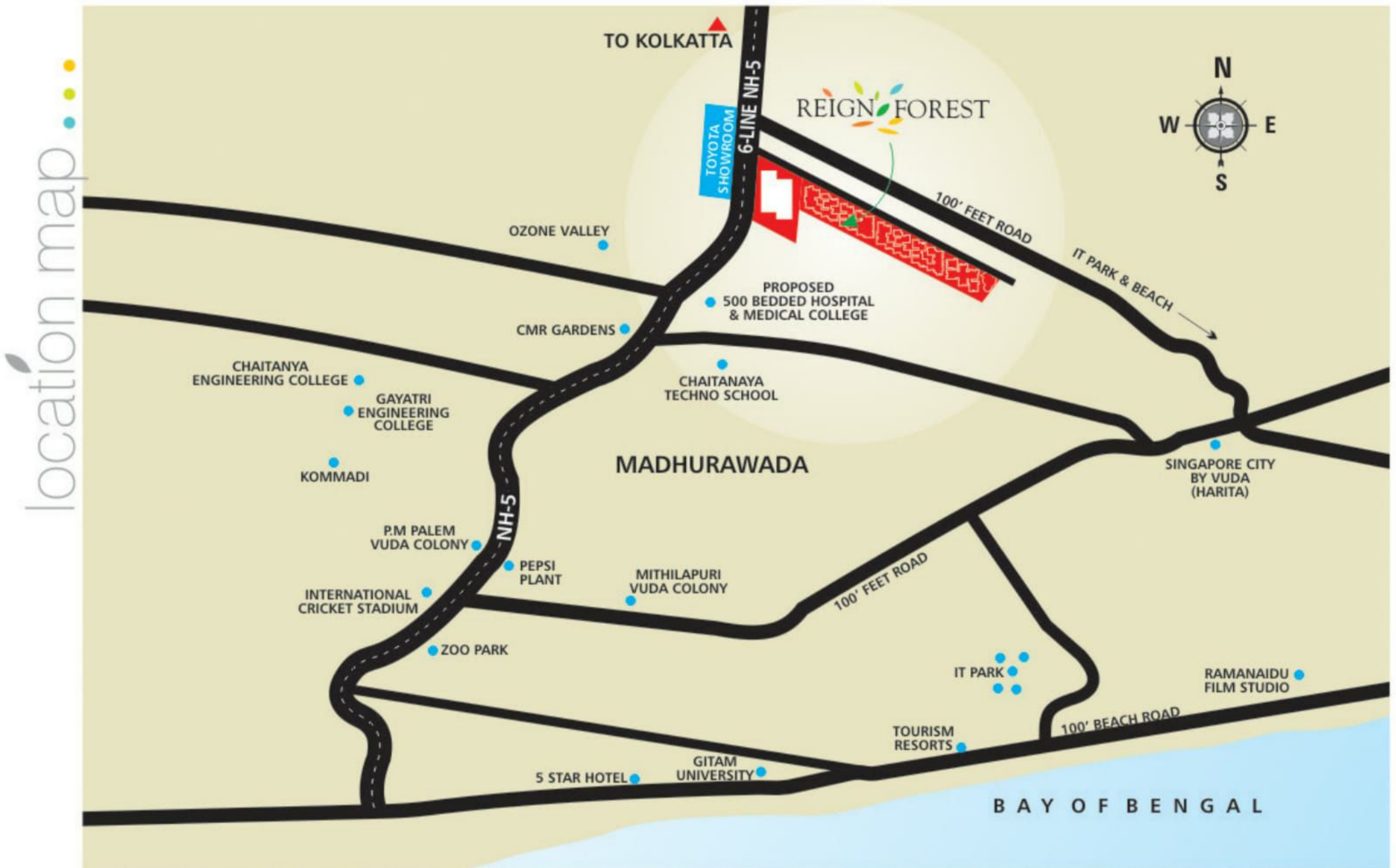


## Club House facilities...

- | Swimming Pool | TV Lounge | Beauty Saloon | Dry Cleaners | Guest Rooms |
- | Mini Library | Yoga cum Meditation Hall | Tennis Court | Terrace Bar cum Coffee Shop |
- | Mini Departmental Store | Conference / Function Hall | ATM Facility | Gymnasium |







## OMCON INFRASTRUCTURE PVT LTD PROJECT : REIGN FOREST

### Site & Office Address :

Opp -Toyota Show Room, NH-16,  
Marikavalasa, Madhurawada,  
VISAKHAPATNAM-530048  
ANDHRA PRADESH

WEB SITE: [www.reignforest.co.in](http://www.reignforest.co.in) , [info@reignforest.co.in](mailto:info@reignforest.co.in)  
Ph :- +91-891-2790681  
MOB:- 789 338 3939, 7702588596

#### ARCHITECTS

**mandapati architects**  
Visakhapatnam.  
Ph: +91 - (891)257 70 33

#### SERVICE CONSULTANT

 **MAPLE HOUSE**  
Bangalore - 560 041  
Ph: +91-(80)42068194

#### STRUCTURAL ENGINEERS

**SHPL**  
**SRI HARSHA CONSULTING ENGINEERS (P) LTD**  
Hyderabad  
Ph: +91-(40)2375 0600

- Excellent connectivity
- Set in sylvan surroundings of green hills
- 5 minutes drive to IT companies (Kenexa, Symbiosys, Sutherland, Mahathi Software, Miracle Systems, Infotech etc.)
- 5 minutes drive to the beach
- 20 minutes drive from RTC complex & Railway station
- 30 minutes drive from Airport

Project approved by



**Note:** This brochure is only a conceptual presentation and not a legal offering. The promoters reserve the right to make changes in elevation, plans and specifications as deemed fit.