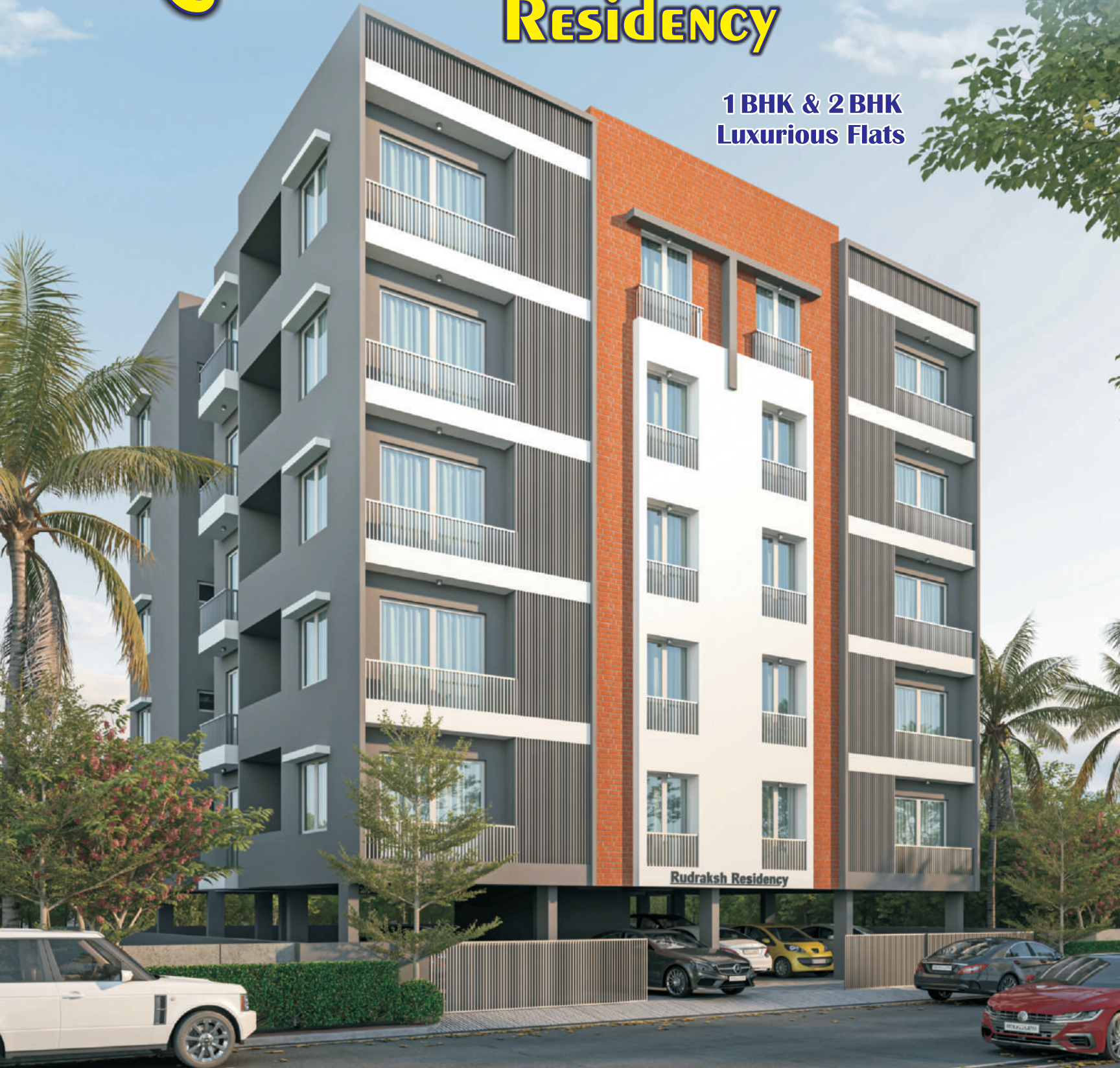


# RUDRAKSH Residency

**1 BHK & 2 BHK  
Luxurious Flats**



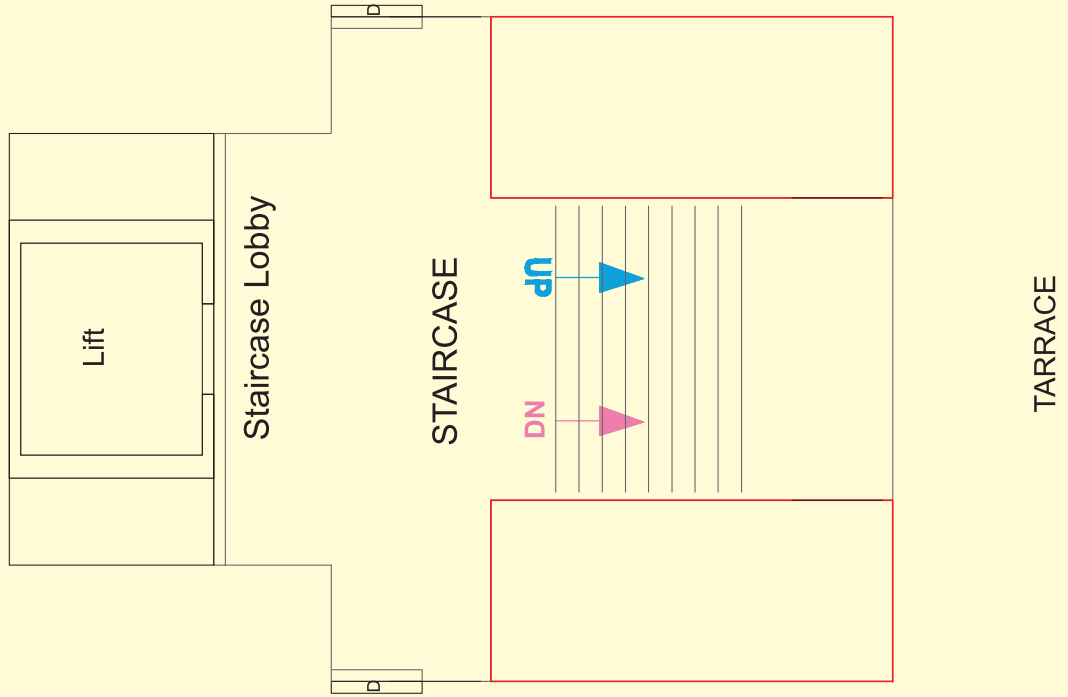
Rudraksh Residency

**45,46 Jawahar Society, Near Gangotri Apartment,  
R.V. Desai Road, Vadodara-390001.**

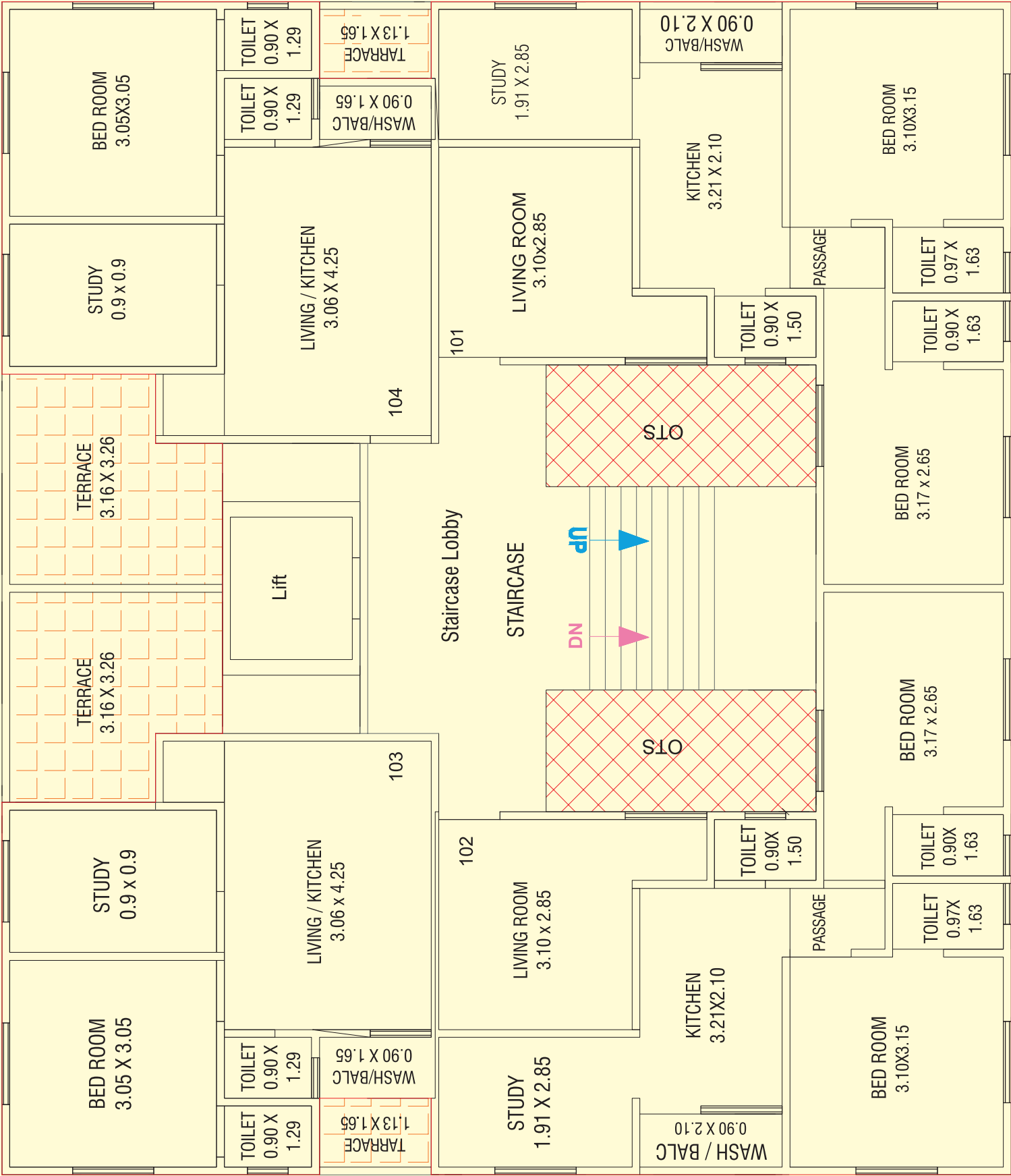


Rudraksh Residency

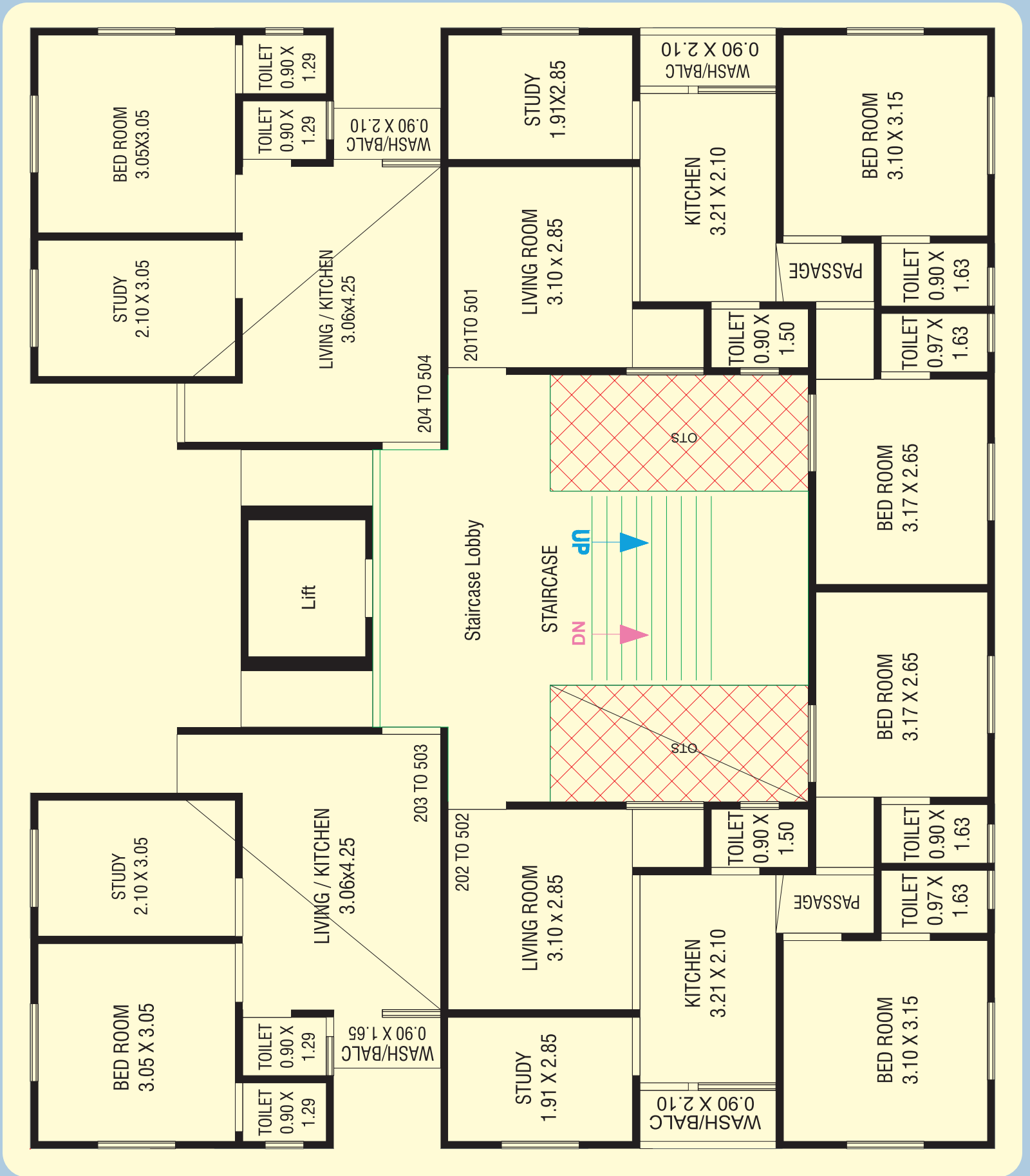
# Ground Floor Parking Plan



# First Floor Plan



# 2<sup>nd</sup> to 5<sup>th</sup> Floor Plan



# LUXURIOUS FLATS WITH MORE AMENITIES

## Developers :

Ranmukteshwar Developers

## Contact :

Jayraj Patni (M) : 95129 77707

## Architect :

Ambica Consultants Planner

## Structure :

A.K. Associates

## Payment Schedule

### Booking 20%

Plinth Level	15%	4 <sup>th</sup> Slab	10%
1 <sup>st</sup> Slab	15%	5 <sup>th</sup> Slab	10%
2 <sup>nd</sup> Slab	10%	6 <sup>th</sup> Slab	5%
3 <sup>rd</sup> Slab	10%	Possession	5%

## SPECIFICATION

- STRUCTURE** : RCC frame structure with smooth finish internal plaster. External surface finished in sand face double coat plaster Structure design as per structural engineer. Design as per earthquake safety norms.
- FLOORING** : Standard quality vitrified flooring with epoxy grouting.
- KITCHEN** : Granite kitchen platform with stainless steel sink and full wall glazed tiles dedo.
- DOORS** : Main door of the flats are specially designed with decorative Brass / S.S. fittings. stone frame door & all other doors will be flush doors with standard fittings as directed by architect.
- WINDOWS** : Three Track Aluminum sliding windows with mosquito net.
- ELECTRIFICATION** : Necessary electric points will be provided like Plug points, Bell Point, T.V. Point, A.C. Point, Refrigerator Point, Washing Machine Points, Kitchen Accessories Point, Geyser Point with branded ISI concealed wiring with suitable 'Anchor' Modular switches.
- PAINTING** : Two coat putty with one coat primer on internal walls. Apex ultima or equivalent paint on external walls and enamel Paint on doors. Dem proof water proofing treatment on external walls.
- PAIKING** : Adequate parking facilities with decorative paving.
- WATER** : Corporation water and Bore well facility will be provided for underground water tank & overhead water tank with auto control system for drinking and other use. Rainwater harvesting through bore well recharge.
- BATH** : Bath, Toilet and wash area full wall tiles & Standard Quality Accessories Provide.
- LIFT** : Fully Automatic Standard Quality Lift Provided.
- Water Protecting & Heat treatments** : Indian Brick bat water proofing treatment and Heat Treatment on terrace.

### NOTES :

Stamp Duty, Registration Charges, Legal Charges. Any type of Government levies. GEB & Maintenance Deposit Charges shall be born by purchaser.

Any Additional Charges or duties levied by the Government, local authorities during or after the completion of the scheme will be born by the purchaser.

In the interest of continual developments in design and quality of construction the developer resents all purchasers shall abide by such charges.

Charges / alternation of any nature including elevations, Exterior color scheme of the apartment or any other charge affecting the overall design concept an outlook of scheme are security **NOT PERMITTED** during or after completion of the scheme.

Incase of delay in services by authority, Developer will not be responsible.

Possession will be handed over after 45 days of settlement of accountant.

Continuance default payment leads to cancellation charges will be Rs. 20,000/-.

(6)

**THIS BROCHURE IS ONLY FOR DISPLAY AND INFORMATION OF THE SCHEME AND IT WILL NOT TREAT AS A LEGAL DOCUMENT.**