



Sky Seven Infratech Pvt. Ltd.

SYNNOVE ATMOSPHERE

Synnove Atmosphere, Opp. Vadodara Cricket Association,
TP-2, Nr. Chotu Maharaj Theatre,
Sevasi, Vadodara - 391 101

CORPORATE OFFICE

24, Mtr. Vasna Bhayli Main Road, Opp. Shakti Green Party Plot,
Next to Vadodara Cricket Academy,
Before Bright Day School, Vadodara - 391410

✉ builder.srishti@gmail.com

🌐 www.sky7infratech.com

☎ 9313924772 / 9313924771

☎ 989821437 / 9998981001

Disclaimer:

The information contained in this brochure is subject to change as may be approved by the competent authorities and cannot form part of any form or contract. All plans are subject to any amendments approved by the competent authorities. This brochure shall not be treated as a legal document; it is only for the purpose of information. The areas are indicative only. The measurements indicated in the plan may vary at the time of construction. All landscaping is conceptual and shall be as per architect's design. Illustrations in this brochure are artist impressions and serve only to give an approximate idea of the project. While every reasonable care has been taken in providing this information, the developers cannot be held responsible for any inaccuracy. The developers reserve all the rights to make any changes as may be necessitated from time to time in the layout, building plan and specifications without any prior notice. Such changes would be binding to all members.



ARCHITECT
UNEVEN (uneven.in)

STRUCTURAL CONSULTANT
Zarna Associates

PLUMBING CONSULTANT
KRUPALU CONSULTANT
PINAKIN PATEL 9825172577

ELECTRICAL CONSULTANT
ORIENTAL ELECTRICALS ENGINEERS
DAXESH DAVE 9376212957

CREATIVE
DESIGN & INTERIORS



4 BHK LUXURIOUS PENTHOUSES
3 BHK LUXURIOUS APARTMENTS
HIGH STREET COMMERCIAL



"A New way of Life"



Sky Seven Infratech Pvt. Ltd.

IN A WORLD FULL OF *Promises*

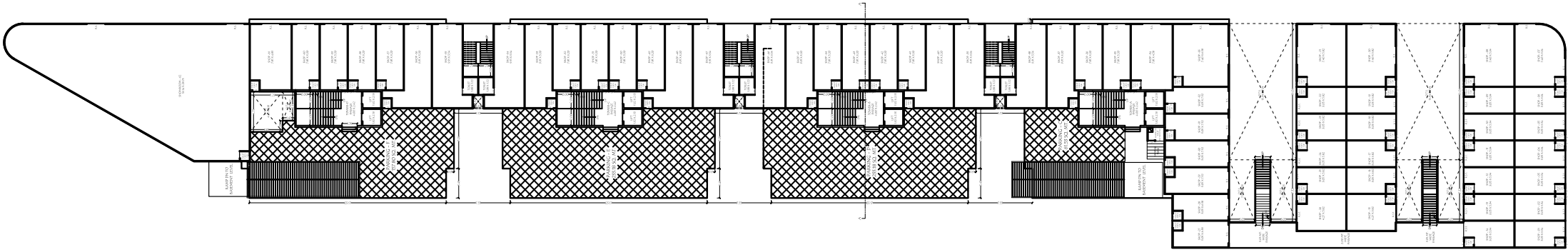
WE BELIEVE IN *Delivering*



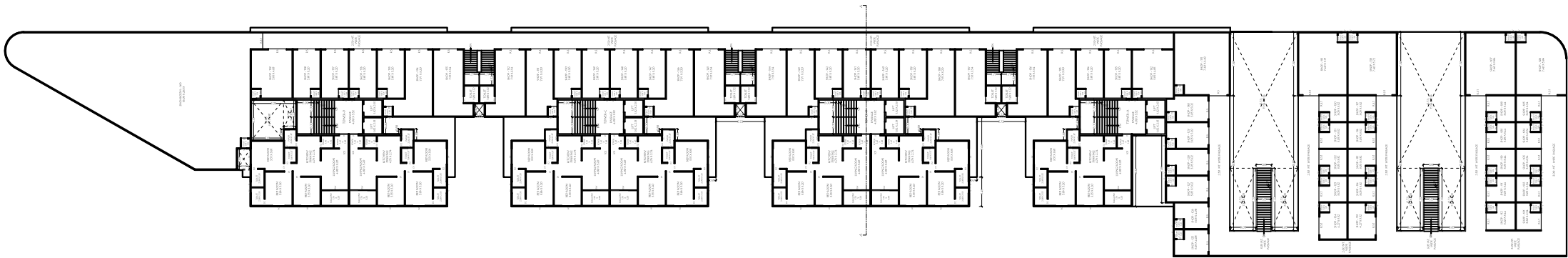
A LANDMARK AS YOUR NEW ADDRESS

Atmosphere is an unmatched blend of modesty and elegance in aesthetically beautiful apartments. The landscaping design of the project is focused on the functionality of spaces. Soothing to the senses, this hanging piece of greens will be an excellent rejuvenation desk besides offering a great view of the skyline.

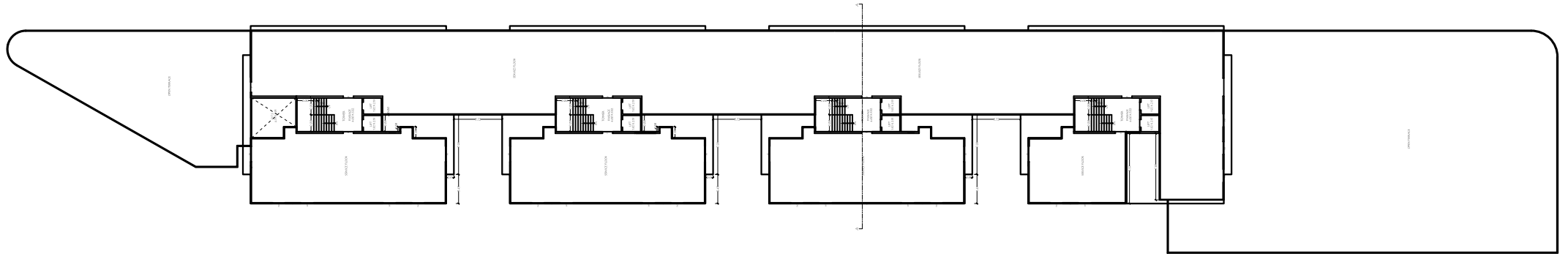
A living space made to provide you refined comfort and security, make Atmosphere and address that defines you.



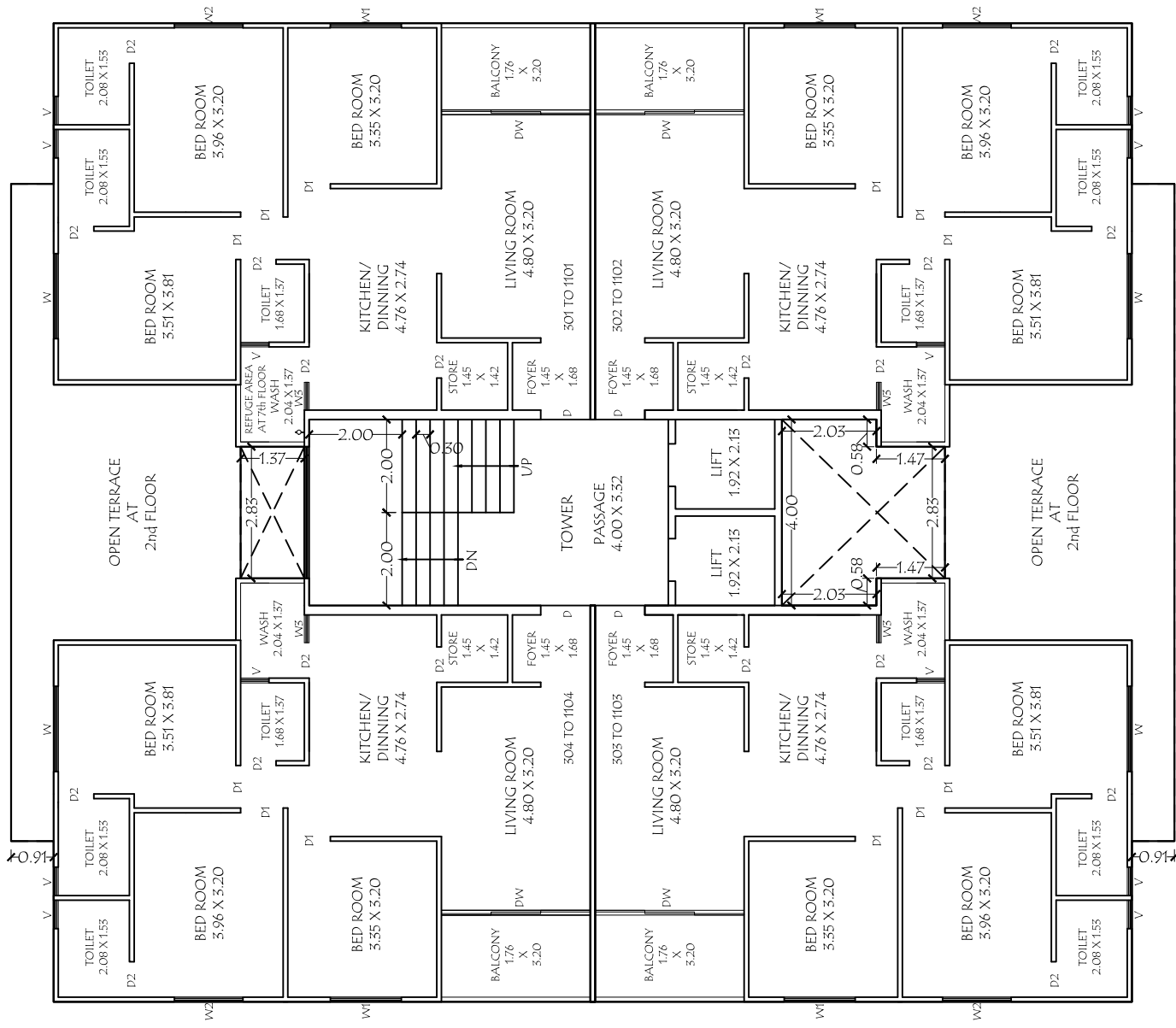
GROUND FLOOR PLAN (TOWER- A,B,C,D.)



FIRST FLOOR PLAN (TOWER- A,B,C,D.)



SECOND FLOOR PLAN (SERVICE FLOOR)



**TYPICAL FLOOR PLAN
(3rd TO 11th) (TOWER- A,B,C,D.)**



TWELFTH FLOOR PLAN (TOWER- A,B,C,D.)

THE INCREDIBLE LOCATION

