



saket Bhu:satva PHASE - II

GOWDAVELLY, NEAR KOMPALLY, HYDERABAD.

A COMMUNITY WITHIN A COMMUNITY



REFLECTION OF A BRIGHTER TOMORROW



An elite community of 170 opulent Villas in a part of 75 acre integrated township featuring a state-of-the-art clubhouse, a rejuvenating swimming pool and ample open spaces. Welcome to a life designed to pamper you and help you unwind.

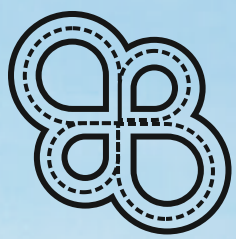




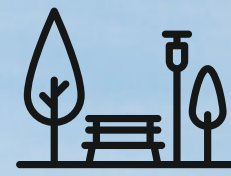
75 ACRES
INTEGRATED
TOWNSHIP



FULLY
LOADED
CLUBHOUSE



EASY ACCESS
FROM ORR
EXIT NO - 5 & 6



1.5 ACRES
CENTRAL
PARK



10 MINS
FROM
KOMPALLY



SCHOOLS
5 MINS
DRIVE



OVER
30
AMENITIES

FEATURING A THOUGHTFULLY-PLANNED
TOWNSHIP FOR YOUR FAMILY'S
ALL-AROUND WELL-BEING



INDOOR
SWIMMING POOL



BASKETBALL
COURT



GYMNASIUM



INDOOR
BADMINTON COURT



YOGA /
MEDITATION HALL



SQUASH COURT



INDOOR GAMES



GUEST ROOMS



TODDLER'S PARK



AMPHITHEATER



CENTRAL GARDEN



INDOOR SWIMMING POOL



CHILDREN'S PLAY AREA



INDOOR BADMINTON COURT



SQUASH COURT



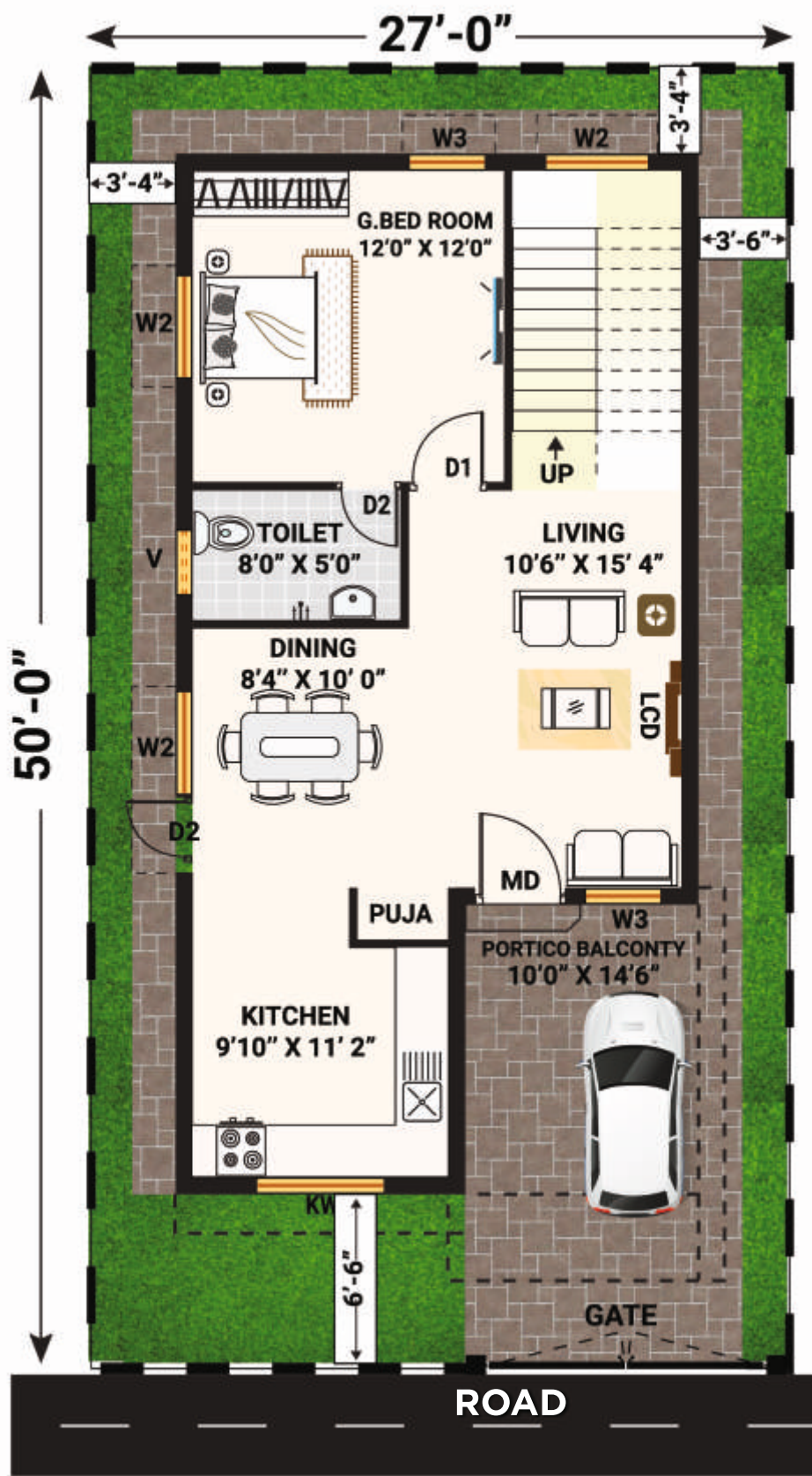
INDOOR GAMES



JOGGING / WALKING TRACK



INDOOR GAMES



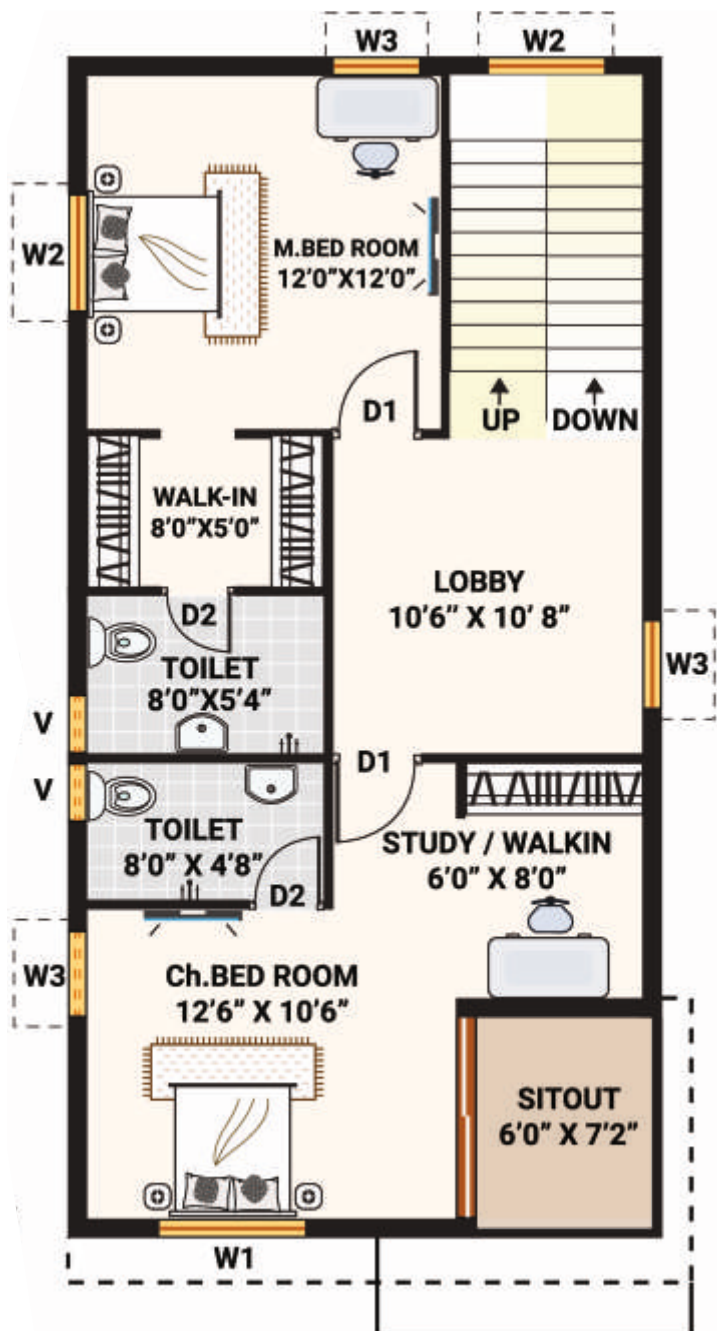
GROUND FLOOR PLAN

150 Sq. Yds. EAST FACING

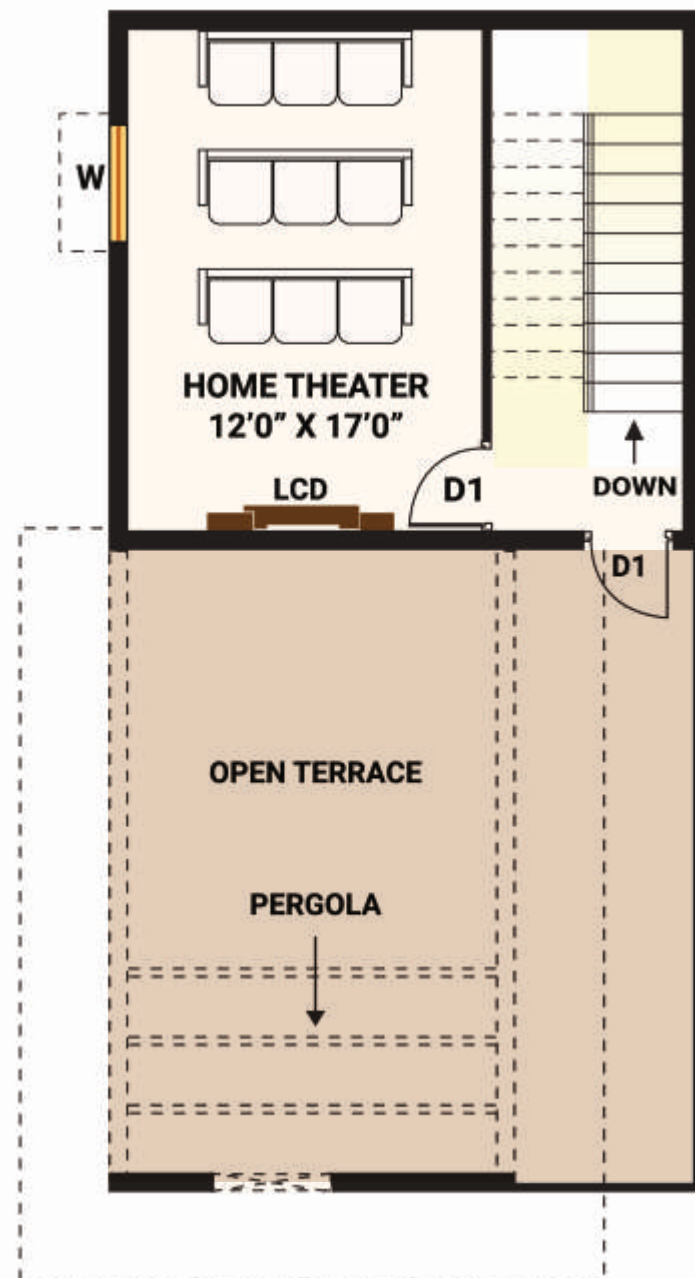
VILLA FLOOR PLAN



Ground Floor	: 709 Sq.ft.
Portico	: 148 Sq.ft.
First Floor	: 762 Sq.ft.
Sit Out	: 47 Sq.ft.
Slab Projections	: 86 Sq.ft.
Second Floor	: 370 Sq.ft.
Grand Total	2122 Sq.ft.

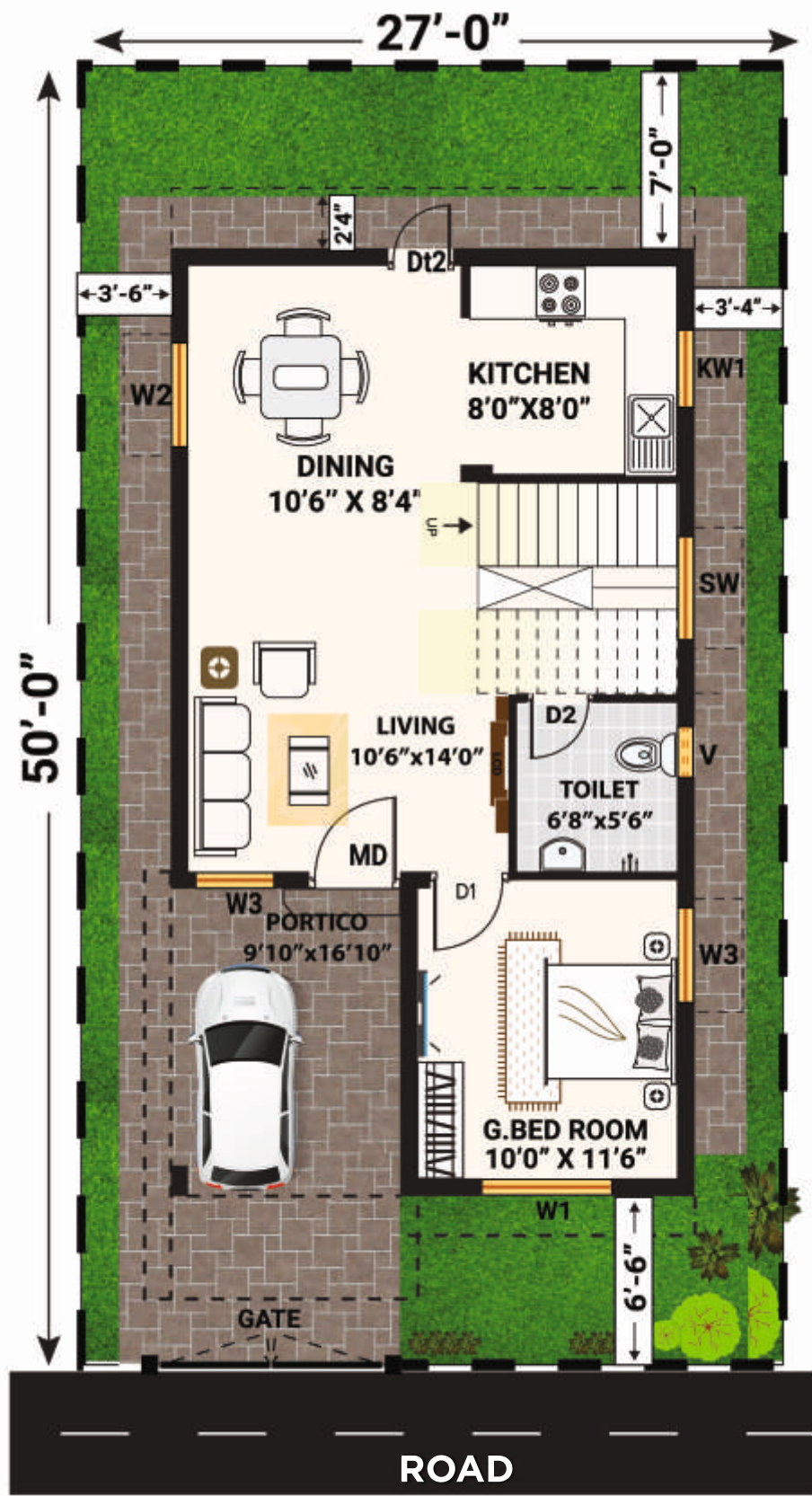


FIRST FLOOR PLAN



SECOND FLOOR PLAN



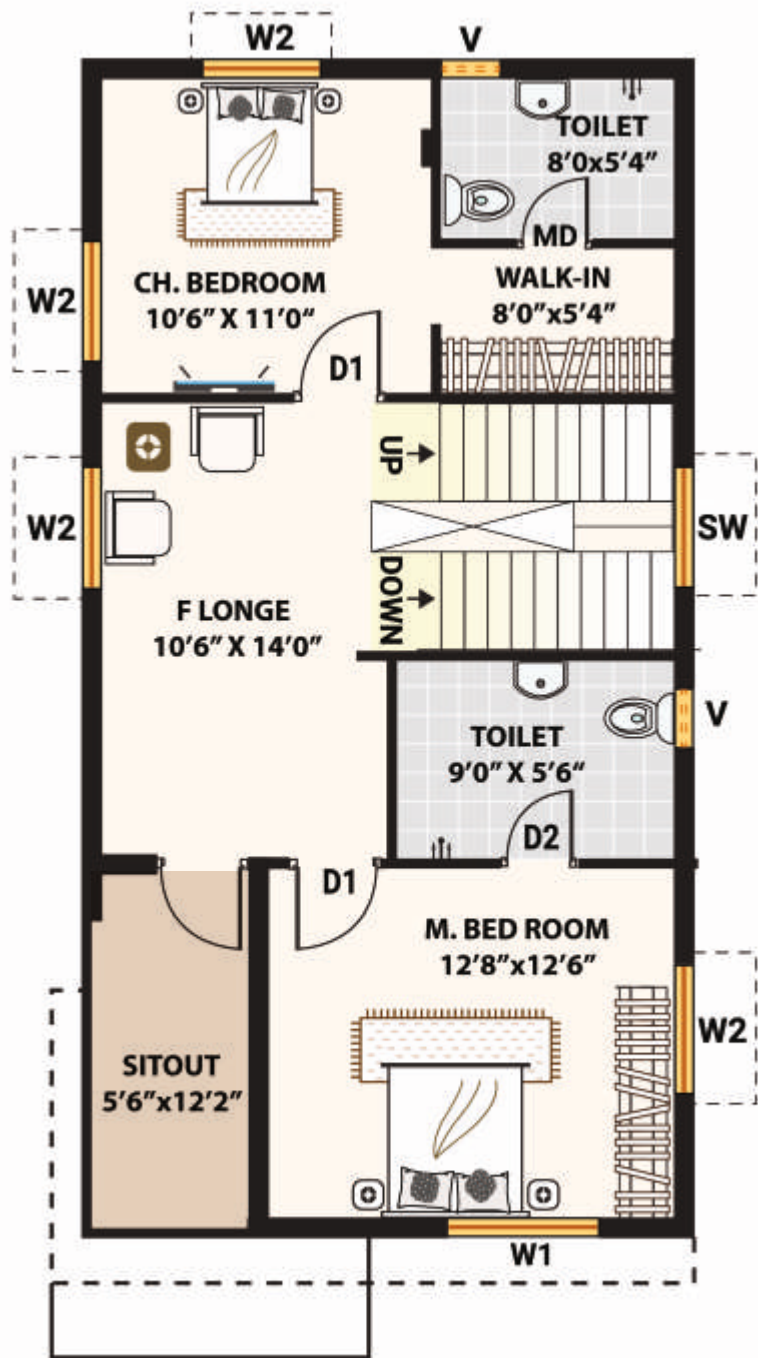


GROUND FLOOR PLAN

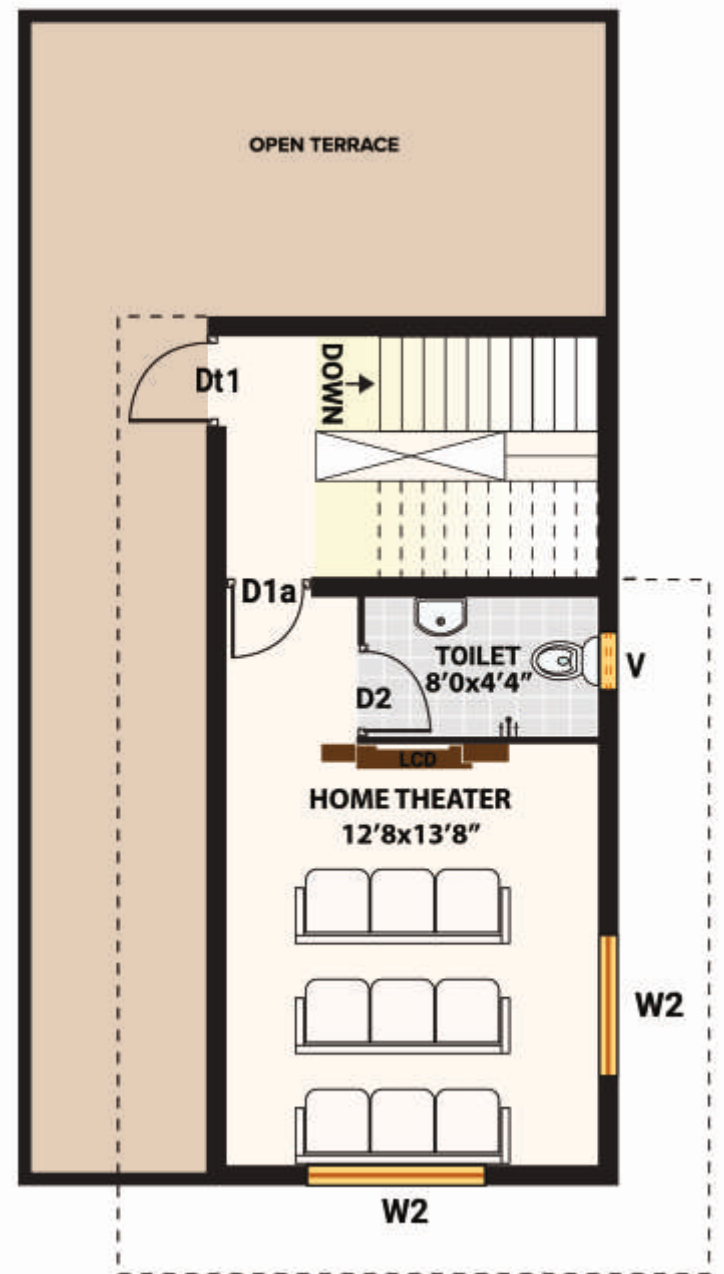
150 Sq. Yds. WEST FACING VILLA FLOOR PLAN



Ground Floor	: 683 Sq.ft.
Portico	: 169 Sq.ft.
First Floor	: 717 Sq.ft.
Sit Out	: 79 Sq.ft.
Slab Projections	: 80 Sq.ft.
Second Floor	: 394 Sq.ft.
Grand Total	2122 Sq.ft.



FIRST FLOOR PLAN



SECOND FLOOR PLAN





GROUND FLOOR PLAN

267 Sq. Yds.

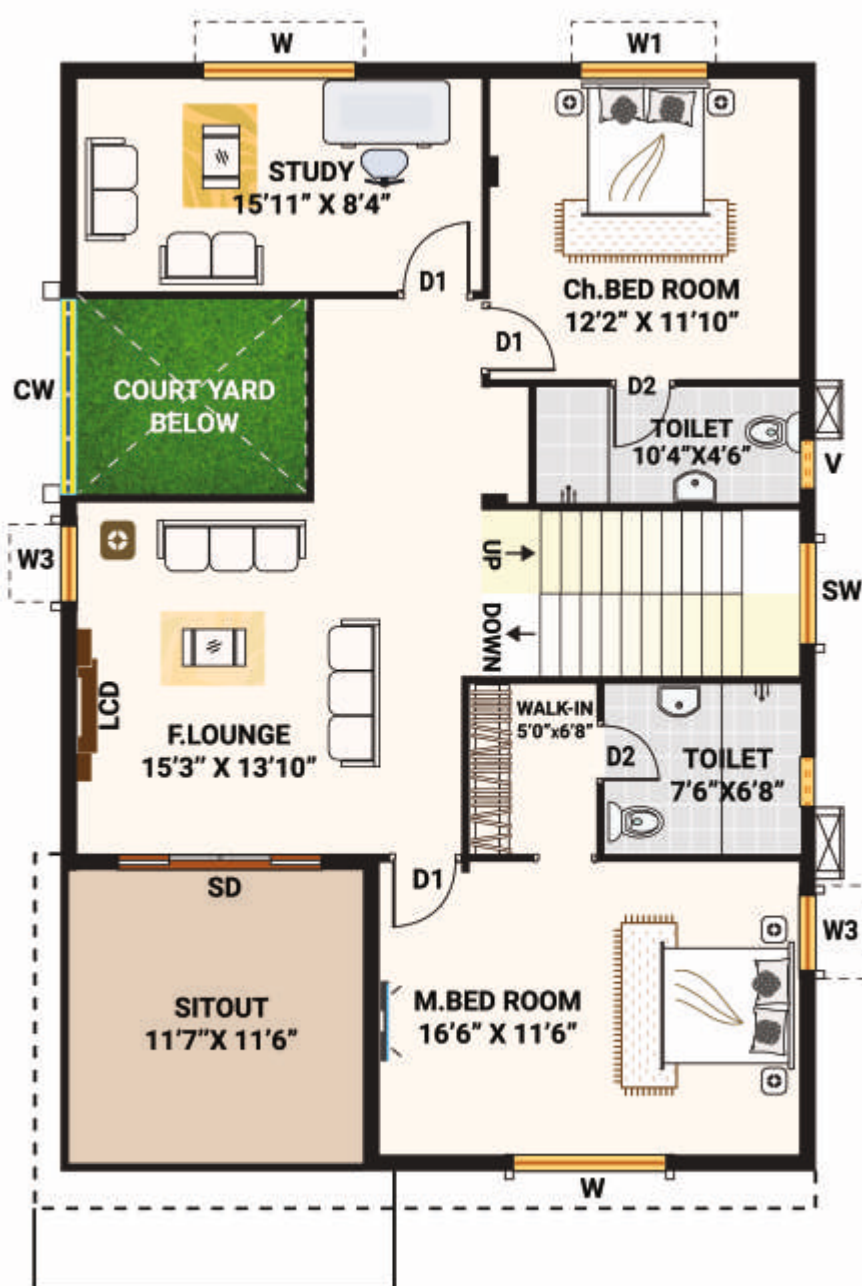
WEST FACING

VILLA FLOOR PLAN

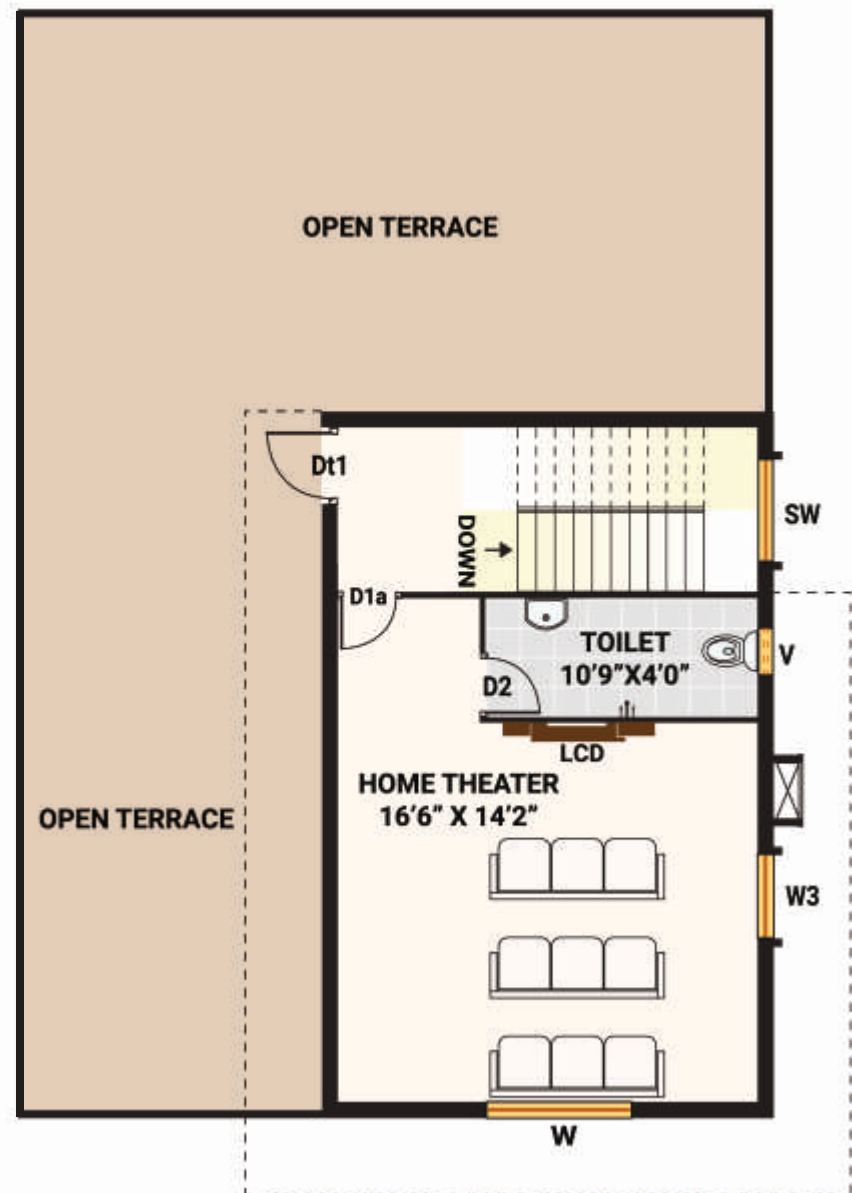


Ground Floor	: 1158 Sq.ft.
Portico	: 219 Sq.ft.
First Floor	: 1158 Sq.ft.
Sit Out	: 141 Sq.ft.
Slab Projections	: 89 Sq.ft.
Court Yard	: (-)32 Sq.ft.
Second Floor	: 476 Sq.ft.

Grand Total 3209 Sq.ft.



FIRST FLOOR PLAN



SECOND FLOOR PLAN





GROUND FLOOR PLAN

284 Sq. Yds.

WEST FACING

VILLA FLOOR PLAN

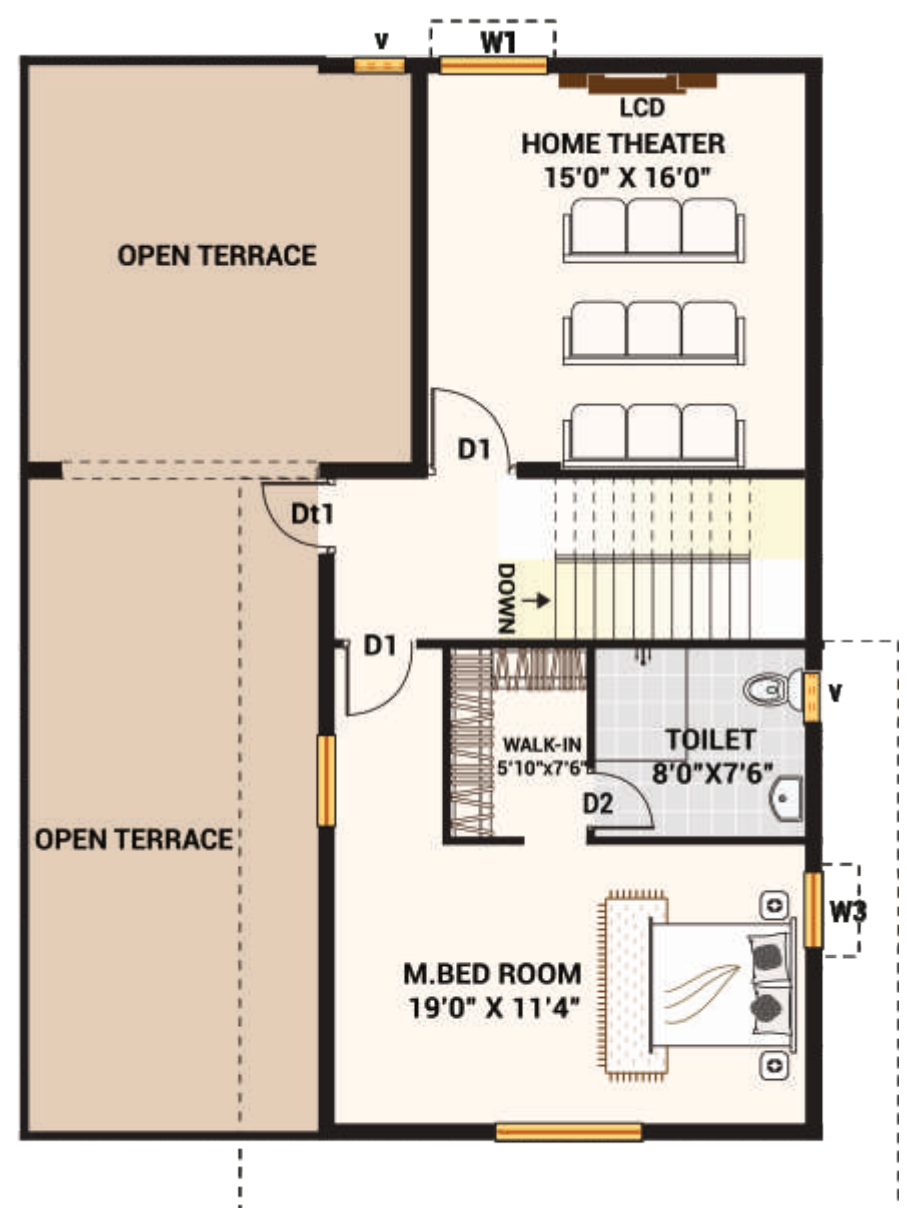


Ground Floor	: 1212 Sq.ft.
Portico	: 304 Sq.ft.
First Floor	: 1272 Sq.ft.
Sit Out	: 140 Sq.ft.
Slab Projections	: 92 Sq.ft.
Second Floor	: 823 Sq.ft.
Court Yard	: (-)30 Sq.ft.

Grand Total 3813 Sq.ft.



FIRST FLOOR PLAN



SECOND FLOOR PLAN



SPECIFICATIONS



Foundation

R.C.C. Framed Structure

Superstructure

4"/8" thick fly ash based solid cement blocks or equivalent.

Plastering

Internal: - Smooth Cement Plaster in two coats

External: - Two coats of cement plaster

Doors & Window

Main Door: Architrave with Engineered door frame and door shutter.

Internal Doors: Architrave with Engineered door frame and door shutter

Windows: - UPVC 2.5 track windows with provision for Mosquito mesh and standard hardware.

Painting

Internal: 2 coats of tractor emulsion over smooth luppam finished surface.

External: 2 coats of Apex weather cool over texture paint.

Flooring & Dado

- Vitrified tiles: G.F -living room, dining , kitchen of 2'x2' floor tiles
 - 2'x2' floor tile - For all bedrooms, F.F lounge, other rooms
 - Matt finished ceramic tiles 2'X2' for sit out.
 - Matt finished 1'x1' ceramic flooring for toilets / Utility.
 - Ceramic tile dado up to 7' ht for bathrooms and 2' ht for kitchen
 - Granite for internal staircase.
 - Parking tiles for Portico area.
-

Kitchen

Granite platform with stainless steel sink with drain board.

Provision for RO unit/ water filter, and electric chimney . Provision for bore and municipal water.

Utility

Provision for washing machine and dish-washer point.

Toilets

Wash Basin - Commode of Hindware or equivalent.

CP fixtures - All bathrooms -Hot and cold mixer with overhead shower.

Master Bathroom - Concealed single lever diverter for hot and cold with overhead shower All CP fitting of Jaguar or equivalent.

Railing

- SS hand rail for internal Staircase & Courtyard cut-out.
 - Sitout SS with Glass railing.
-

Electrical

- Concealed copper wiring in PVC pipes
 - A/C provision in all bedrooms.
 - Power outlets geyser in all toilets.
 - Power plug for cooking range, chimney, refrigerator, micro-oven.
 - Plug points for TV, music system in all bedrooms and living rooms
 - 3 Phase supply for each unit. with dual metering for TSSPDCL / DG Supplies.
 - Miniature Circuit Breakers or equivalent.
 - All electrical modular switches and sockets will be of Havels or equivalent.
-

Telecommunications

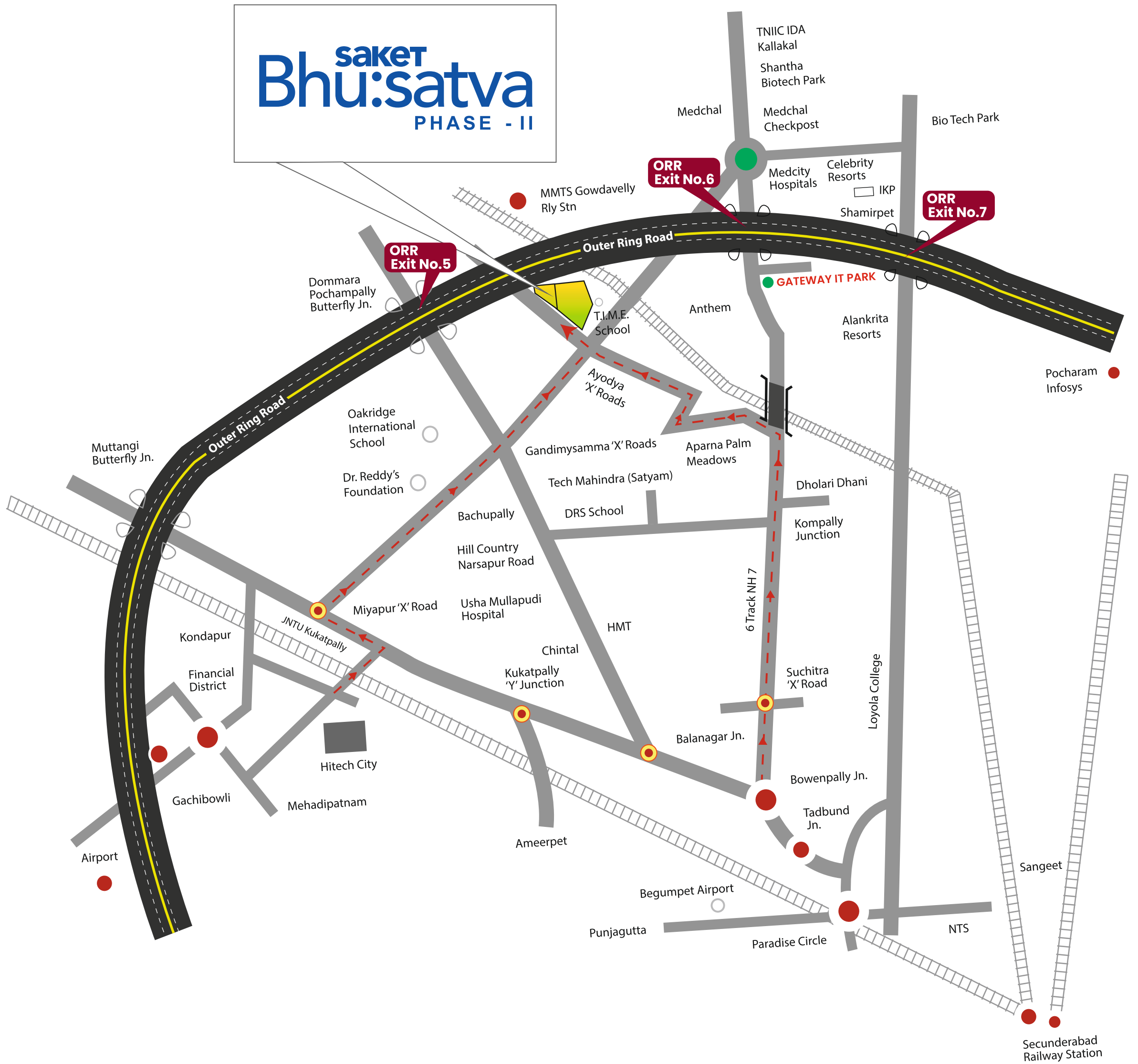
- Broadband - subject to service provider
 - Intercom connectivity to security.
 - Provisions for DTH / Satellite TV / Alternate in bedrooms and hall.
-

Common Amenities

- 100% backup generator for villas.
- Sewerage treatment plant.
- Water supply with Pressurized Pneumatic pumping system.
- B.T. Road with tiled footpath or Carpet grass
- Landscaped Park areas and footpaths.

Location Map

(Not to Scale)



FOR LOCATION SCAN



3 KM FROM
KANDLAKOYA
GATEWAY IT PARK

10 MINS FROM
KOMPALLY

CLOSE TO ORR
EXIT NO. 5 & 6



CLOSE TO EVERYTHING YOU NEED, FAR FROM EVERYTHING YOU DON'T.

Shopping & Entertainment

- Big Bazar, Vijetha & Ratnadeep
- Metro Cash N Carry
- Cine Planet Mall / Multiplex, D-mart
- TNR Estates, 10 Screens Multiplex 6 Mall (Upcoming)
- Dhola-ri-Dhani
- Carnival Cinemas & Leonia
- Celebrity Resorts, Alankrita Resorts & Shamirpet Lake

Educational Institutes

- Times International School
- CMR University
- Mahindra University
- Niraj International School
- Sunflower Vedic School
- Oakridge International School
- Pearson School

Hospitals

- Rush Hospital
- Medicit Hospital
- CMR Hospital
- EMRI Hospital
- Sigma Hospital
- Harsha Hospital
- Renova Hospitals
- Narayana Hospital
- Usha Mullapudi Cardio Hospital

Companies & Business Parks

- Kandlakoya IT Gateway Park
- Tech Mahindra
- Dr. Reddy's
- Apparel Textile Park
- Proposed Infra Park
- Proposed Fashion City
- Proposed IT 6 ITEs SEZ





 90100 93000

SITE ADDRESS: Saket Bhu:Satva,
Gowdavelly, Near Kompally, Hyderabad.

 sales@saket.in  www.saketgroup.com



Home loans
available from:



Note: This brochure is only a conceptual presentation of the project and not a legal offering.
The promoters reserve the right to alter and make changes in plans, specifications, elevation and any other detail as deemed fit.