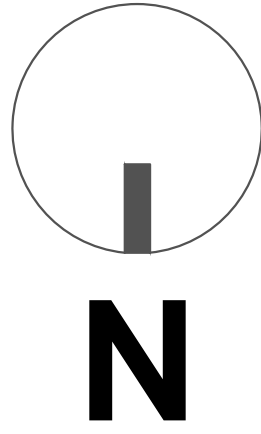
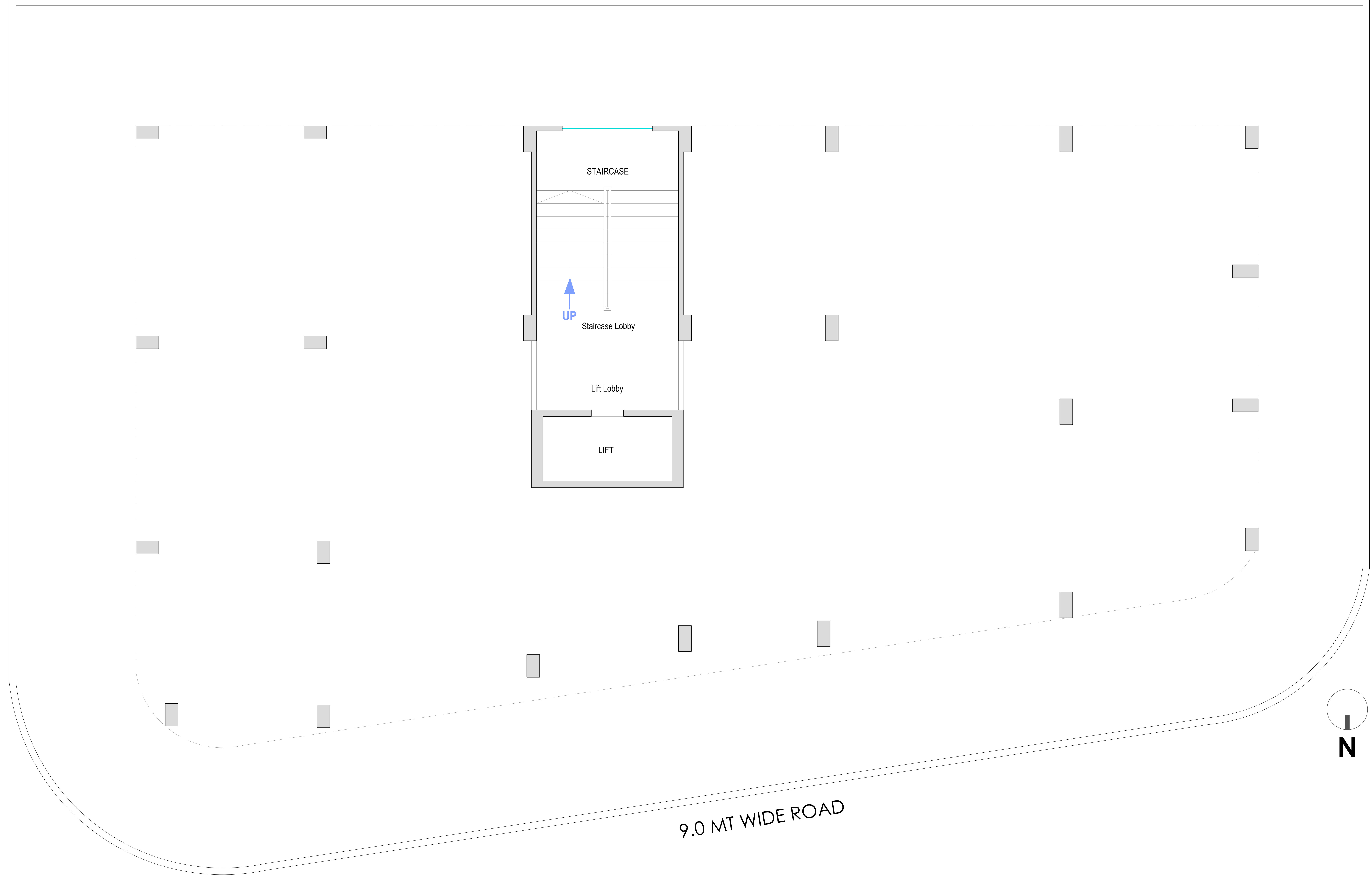


# SHARAN BLISS

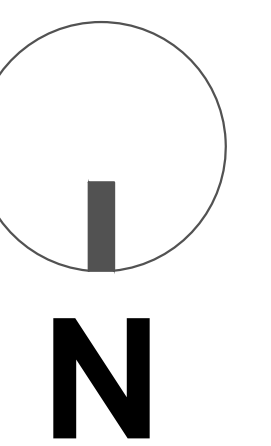
4BHK LUXURIOUS FLATS



7.5 MT WIDE ROAD









SPECIFICATIONS

- EARTHQUAKE RESISTANT RCC DESIGN AND STRUCTURE
- PROVISION FOR RAINWATER HARVESTING WITHIN PREMISES
- PUJA AREA WITHIN EVERY APARTMENT
- BEST IN CLASS AND PREMIUM QUALITY AUTOMATIC PASSENGER LIFT / ELEVATOR
- PROVISION FOR FIRE SAFETY PIPING AND FIRE SAFETY EQUIPMENT ON EACH FLOOR
- ATTACHED BATHROOMS WITH BRANDED PREMIUM SANITARY WARE, FITTINGS, FIXTURES, AND ACCESSORIES IN ALL BATHROOMS.
- PROVISION FOR COMMON TOILET.
- PREMIUM QUALITY ELECTRICAL COPPER WIRING, MODULAR SWITCHES AND ACCESSORIES
- USE OF PREMIUM QUALITY VITRIFIED TILE FOR FLOORING AND ANTI-SKID FLOORING FOR BATHROOMS
- PREMIUM QUALITY PAINT ON INTERIOR AND EXTERIOR WALLS
- PREMIUM QUALITY MAIN DOOR AND FLUSH DOORS FOR ROOMS AND BATHROOMS
- PROVISION OF SEPARATE WATER TANKS FOR RESIDENT WATER USAGE AND FIRE SAFETY WITH UNDERGROUND AND OVERHEAD WATER TANKS. PROVISION OF UNDERGROUND BORE FOR SUPPLEMENTARY WATER NEEDS
- WITHIN MUNICIPAL LIMITS. ACCESS TO MUNICIPAL WATER AND SEWAGE SYSTEMS.
- PROVISION FOR PIPED NATURAL GAS CONNECTION FROM VADODARA GAS LIMITED

AMENITIES

- POWER BACKUP / GENERATOR FOR LIFT AND ESSENTIAL COMMON LIGHTINGS FOR THE ENTIRE PREMISES
- ENERGY EFFICIENT DESIGN OF LIGHTINGS FOR COMMON AREAS AND ENTIRE PREMISES
- SECURE AND GATED PREMISES WITH 24X7 CCTV SECURITY SURVEILLANCE OF THE ENTIRE PREMISES
- COMMON SERVANT / DRIVER TOILET PROVISION ON GROUND FLOOR
- OPEN GARDEN AND COMMON AMENITIES, GREEN AREA FOR COMMON GATHERINGS ON TERRACE
- GREENERY, WATER BODY, GARDEN AND CHILDREN PLAY AREA ON THE GROUND FLOOR PROVIDING LIVELY EXPERIENCE

SHARAN BLISS

DEVELOPERS

JAMS ASSOCIATES  
PVT LTD

STRUCTURAL ENGINEER

AASHUTOSH A DESAI  
CONSULTING ENGINEERS

ARCHITECT

STUDIO DAVENPORT  
ABLAZE

Contact : +91 9099697000 / +91 9825095719

PAYMENT MODE

- BOOKING - 5%
- PLINTH - 20%
- 2<sup>ND</sup> FLOOR SLAB - 20%
- 4<sup>TH</sup> FLOOR SLAB - 20%
- TERRACE SLAB - 20%
- POSSESSION - 15%

