



dream home
awaits u....

SRC

Dwarakamayee

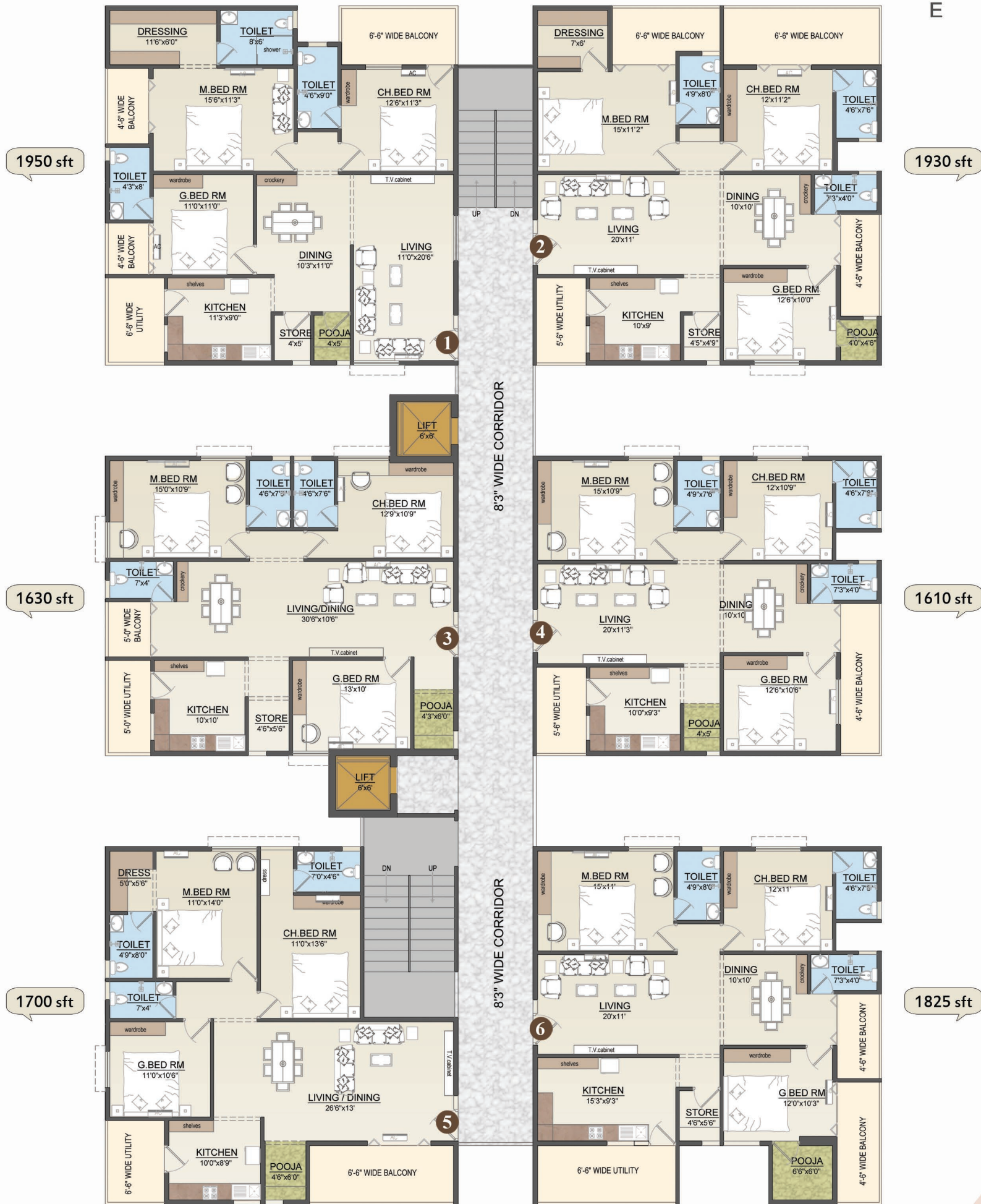
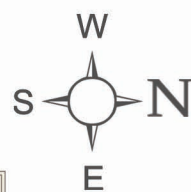

AP RERA
P03280062464



We are
Sri Rajasri Constructions
seek to redefine the skyline of Andhra Pradesh, not just in terms of architecture, but in the lives of those who inhabit our spaces every day. A long history of breaking new ground is proven in our many projects standing tall today. The endeavour of SRC Dwarakamayee has benefitted tremendously from their expertise and experience.



Typical Floor plan



SRC
Dwarakamayee

Project Highlights

- * Kids Play Area.
- * Outdoor Fitness Area For Adults.
- * CC.TV Surveillance.
- * Solar Street Lighting.
- * Walking track On Terrace.
- * Intercom Facility.
- * Fire Safety Equipments.
- * Yoga & Aerobic Decks On Terrace.
- * Just 50ft Distance From Carshed jn.
- * Seating areas.



Specifications

Structure

RCC Framed Structure designed to withstand Wind and Seismic Loads.

Superstructure

6" thick brick masonry for external walls and 4" thick brick masonry for internal walls in cement mortar.

Doors

Main doors with teak wood frame and teak wood shutter with polish and good quality hardware. Internal doors with well seasoned country wood frames and water resistant flush door shutters with standard hardware.

Windows

uPVC windows with standard hardware and safety grills.

Flooring

Double Charged 2' x 2' size Vitrified Tiles of reputed make.

Toilets

Ceramic tiles dadoing upto 7' height, sanitaryware of Parryware / Hindustan / Essess or Equivalent make. All CP fittings are of Jaquar / Essco / Czar / Plumber or Equivalent make.

Kitchen

Glazed ceramic tiles dadoing upto 2' height above the kitchen platform. Granite platform with SS sink, Provision for Water Purifier, Chimney and Exhaust fan.

Electrical

Concealed copper wiring of ISI mark of reputed make with adequate points to all rooms and modular switches of Anchor Roma /Legrand or Equivalent make.

Painting

External premium quality Acrylic emulsion paint of exterior grade. Internal putty finish with two coats of emulsion paint and one coat of cement primer.

Water

Adequate water supply from suitable borewell.

Lift

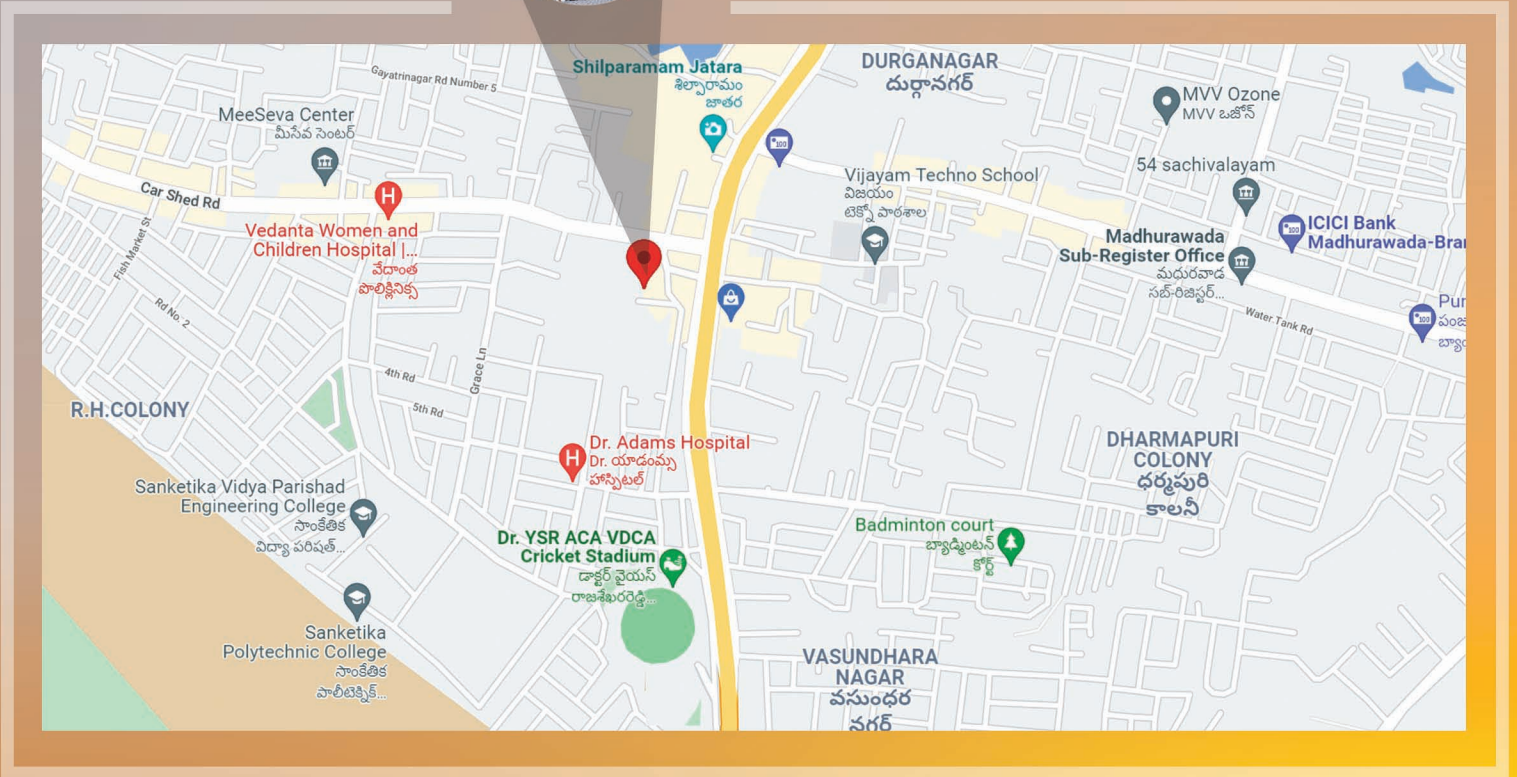
Johnson / Kone or Equivalent make elevator of 6 Passenger capacity.

Generator

Standby generator of reputed make to operate lift, pumps, lobby, staircase lighting and selected points in each flat.



LOCATION



SCAN QR CODE



LOCATION

PROJECT FUNDED & APPROVED BY : 



**SRI RAJASRI
CONSTRUCTIONS**

43-11-2/20
PENT HOUSE
SRI SAI RESIDENCY
SUBBALAKSHMI NAGAR
VISAKHAPATNAM - 530016.

srirajasriconstructions@gmail.com

CONTACT :

ARCHITECTURAL CONSULTANTS

maye
PLANNERS
Architects and Interiors
Ph: 9985931941

STRUCTURAL ENGINEERS


STRUCTURAL ENGINEER
Cell : 98487 73119.

Architectural Renderings & Brochure Design. by



9030191066, 9550298244.

- NOTES:-
1. This brochure is only a conceptual presentation of the project and not a legal offering, the promoters reserve the right to alter and make changes in elevation and plans as deemed fit.
 2. All dimensions indicated in the above plans are excluding the paintings and finishes. Columns and walls are subject to minor changes based on structural designs.
 3. APSEB, GVMC, Water, NEDCAP, Standby Generator & Car parking charges are extra.
 4. Registration, Legal and Documentation, GST and Labour Cess are to be borne by the customer.