

## OUR PREVIOUS PROJECTS

- SREE FORTUNE GRAND
- SREE FORTUNE HOMES
- SREE SRINIVASA CONVENTIONS
- PR HEIGHTS
- SUNNY MEDOWS
- SREE FORTUNE HEIGHTS
- SREE FORTUNE SMART HOMES

### CORPORATE OFFICE ADDRESS:



6th Floor, Hotel Sree Fortune Grand,  
Prathuru Road, Tadepalli, Guntur - 522 501.

### LOCATION - QR



### SITE ADDRESS:



KLU Road, Tadepalli,  
Guntur - 522 501.

**+91 9603 48 2345, 9603 58 2345**

### ARCHITECTURAL & STRUCTURAL CONSULTANT:

**SRK CONSULTANCY**

Plot No. : 56, KP Nagar, Benz Circle, Vijayawada.  
B. Raja Sekhar Reddy | Call: **+91 739 681 89 29**

### DESIGN & BRANDING:

**kreadz**  
ADVERTISING

Raja Vilas, Behind Bheemas, Manikonda, Hyderabad.  
Call: +91 9989 11 9900. | [www.kreadz.com](http://www.kreadz.com)

Note : The contents including designs, layouts, amenities, facilities, images displayed/provided, are solely for information purpose and are not intended to constitute solicitation. It is an artistic impression/schematic representation of the project shown and is indicative of the project that can be built. This material does not constitute a contract of any type between the developer/promoter/owner and the recipient. Nothing should be construed to be final. Since the project is under evolution, there is possibility that there may be certain changes in the project as represented in promotional material. Every interested buyer is required to verify all the details independently prior to concluding any decision of buying any unit.

A Project by:



**SREE FORTUNE**  
INFRA AND DEVELOPERS



A BREATH OF LUXURY,  
A TOUCH OF GREEN

Ultra Luxury Triplex Villas & Villaments

**@KLU Road, Tadepalli, Guntur.**



WELCOME TO



Welcome to a vision of

## A VIRIDIAN WORLD OF PEACE

Imagine waking up not to honking cars, but to chirping birds. Imagine your morning jog weaving through a scenic, tree-lined track, your kids playing under the shade of a canopy of trees, and your weekends spent meditating by a lily pond or grilling at a barbecue counter, all without leaving your community. Welcome to your new home—where nature isn't just part of the design, it is the design.



SREE  
FORTUNE GREEN FIELD  
VILLAS



The streak of

# GREEN

IN A WORLD OF GREY

Set across a beautifully planned 4.5 acre green enclave, this is not just a residential address—it's an experience, an escape, and a way of life. With only 45 villas and 12 villaments, your peace, privacy, and personal space are guaranteed in a serene, boutique community that blends luxury with lushness.



Live Amidst Lush  
**LANDSCAPES  
AND OPEN SKIES.**



4.5 Acres  
Gated Community



Avenue  
Plantation



45 Villas



12 Villaments



Play Area



Club House



Landscaping



## LEGEND

1. Entrance / Exit
2. Avenu Plantation
3. Multiple Sitting Area
4. Open Gym
5. Lawn
6. Rooftop Swimming Pool
7. Club House
8. Amphitheater
9. Box Cricket
10. Villaments
11. Children's Play Area
12. Walking/Sitting Area
13. Basket Ball Court





## Elegant & Versatile LIVING SPACE

Let's get this straight—green isn't a buzzword here. It's a lifestyle. From the moment you enter, you're greeted by avenue plantations that line your path like a leafy red carpet. The community has been carefully planned with designer landscaping to ensure that every step you take feels like a walk through a curated natural wonderland.



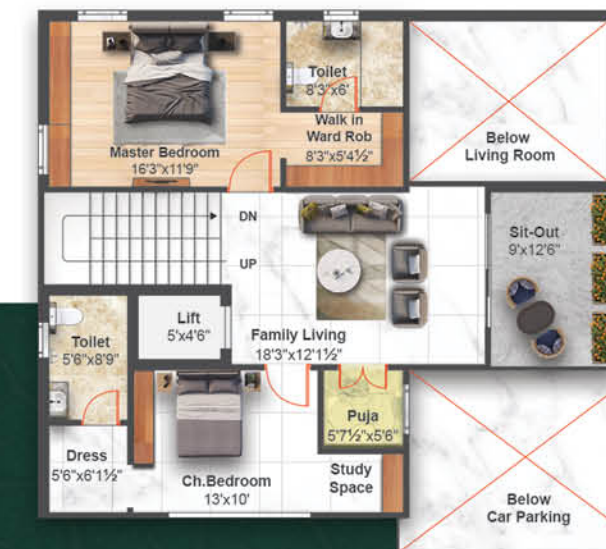


EAST  
FACING VILLA

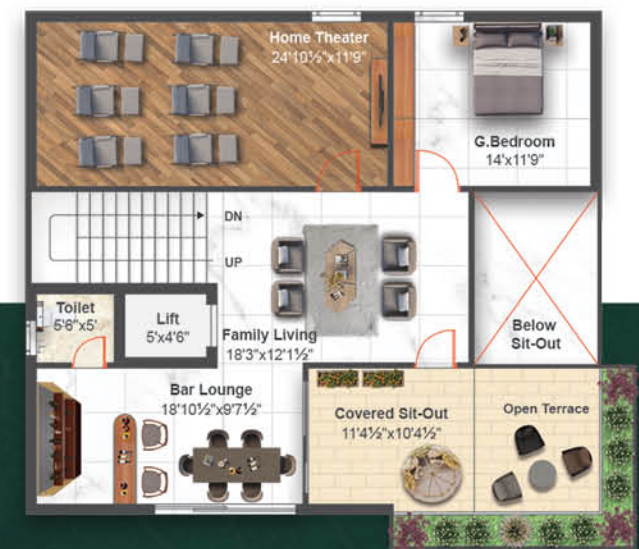
240  
Sq.yds.



GROUND FLOOR



FIRST FLOOR



SECOND FLOOR



Ground Floor Area

1,514 sft.

First Floor Area

1,201 sft.

Second Floor Area

1,400 sft.

Total Built up Area

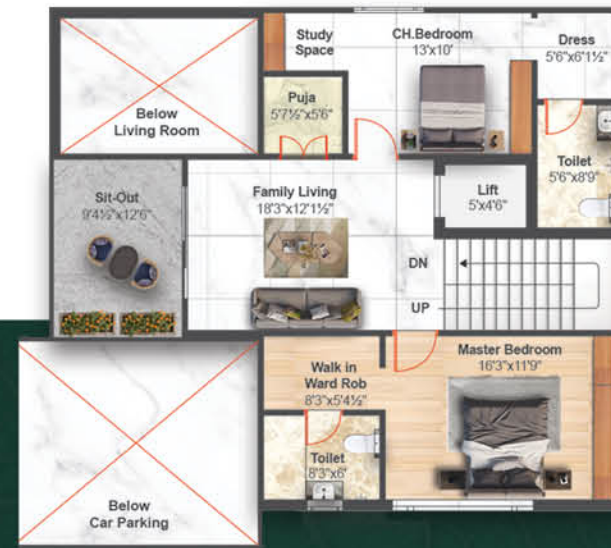
4,115 sft.

# WEST FACING VILLA

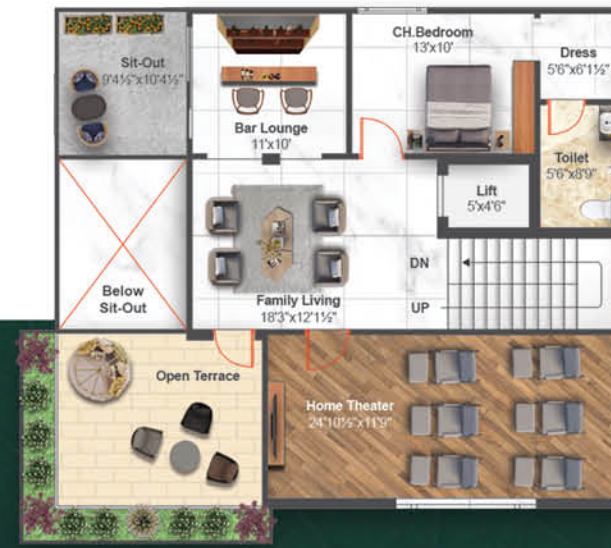
240  
Sq.yds.



GROUND FLOOR



FIRST FLOOR



SECOND FLOOR



Ground Floor Area

1,514 Sft.

First Floor Area

1,201 Sft.

Second Floor Area

1,400 Sft.

Total Built up Area

4,115 Sft.





Rooting for a better lifestyle?

**YOU'VE FOUND IT!**

Prefer the idea of a more compact, elegant lifestyle with all the greenery perks? Our 45 villas & 12 villaments offer modern living in vertical layouts without sacrificing space, light, or natural views.

It's like villa living, just with a bit more sky in your window—and a bit less yard to mow.





EAST  
FACING VILLA

204  
Sq.yds.



GROUND FLOOR



FIRST FLOOR



SECOND FLOOR



Ground Floor Area  
1,264 sft.

First Floor Area  
1,160 sft.

Second Floor Area  
987 sft.

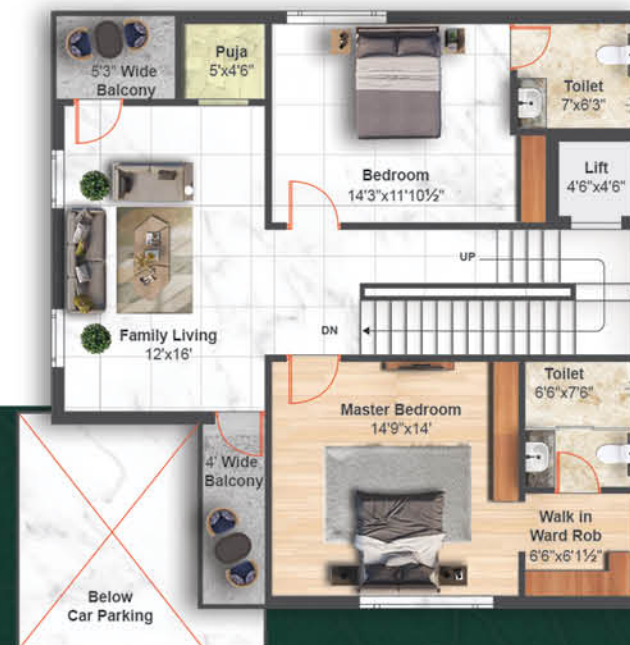
Total Built up Area  
3,411 sft.

# WEST FACING VILLA

204  
Sq.yds.



GROUND FLOOR



FIRST FLOOR



SECOND FLOOR



Ground Floor Area

1,264 sq.ft.

First Floor Area

1,160 sq.ft.

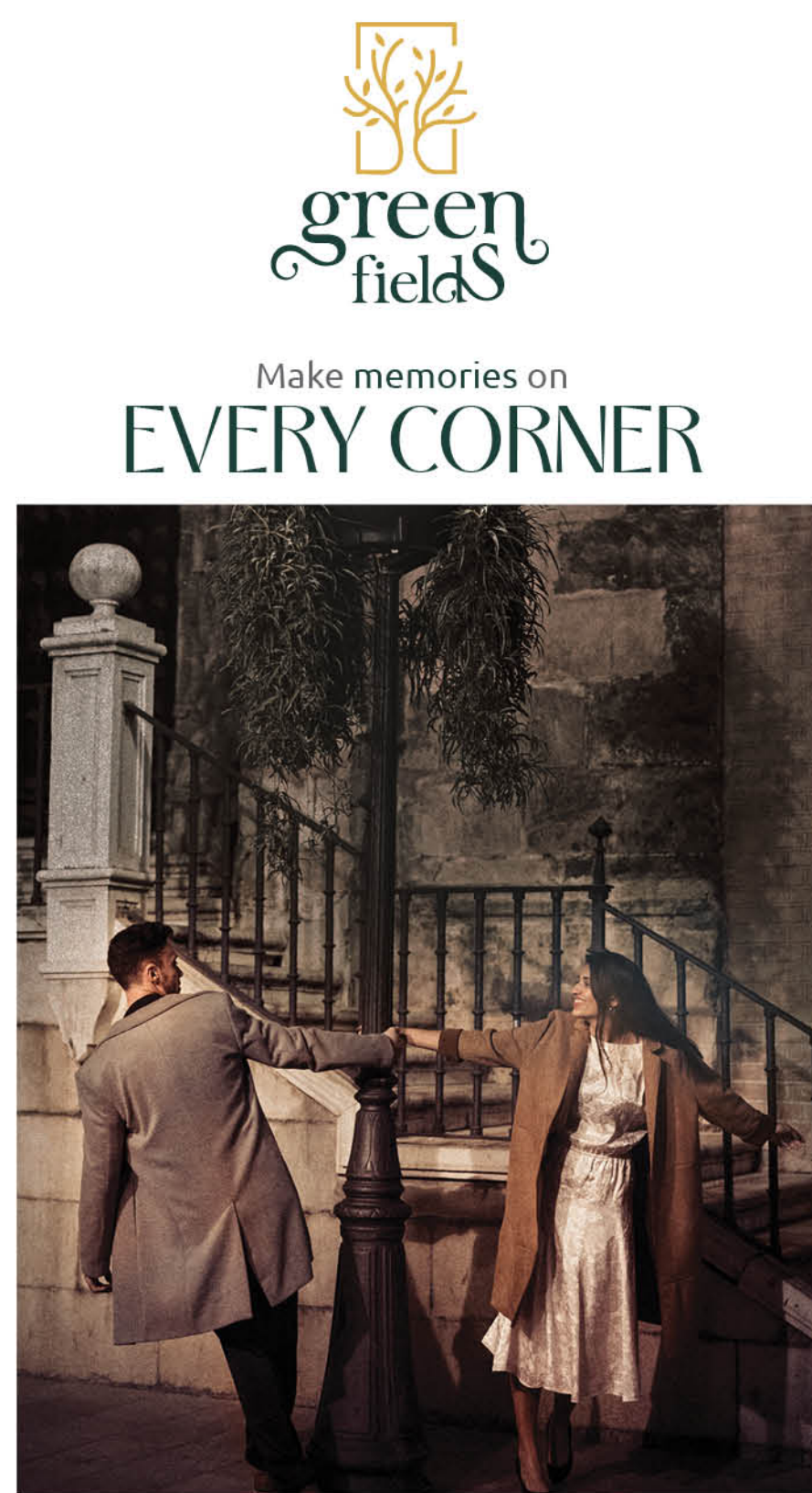
Second Floor Area

987 sq.ft.

Total Built up Area

3,411 sq.ft.







EAST  
FACING VILLA

164  
Sq.yds.



GROUND FLOOR



FIRST FLOOR



SECOND FLOOR



Ground Floor Area

961 Sft.

First Floor Area

869 Sft.

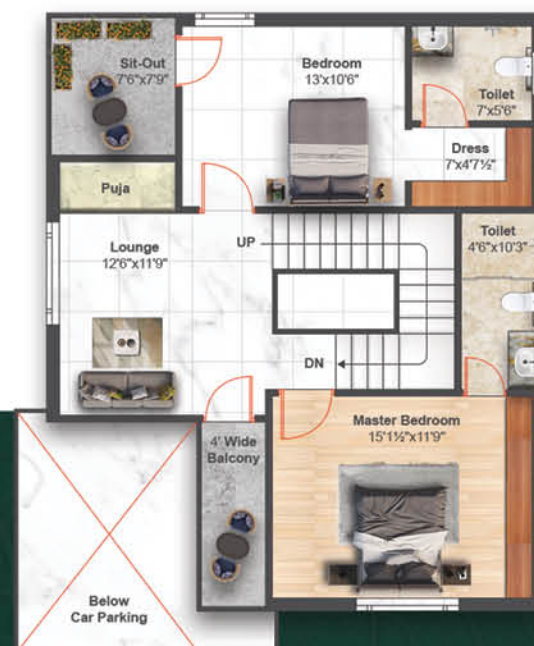
Second Floor Area

683 Sft.

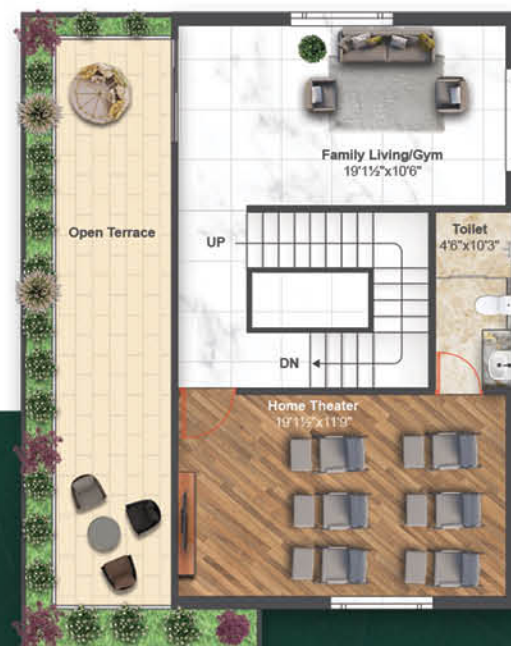
Total Built up Area

2,513 Sft.

171  
Sq.yds.



## FIRST FLOOR



## SECOND FLOOR



1,009<sub>Sft.</sub>

908 sft.

783 sft.

2,700 sft.





Welcome to your daily dose of  
**GREEN THERAPY**

Whether you're a young couple dreaming of green beginnings, a family wanting space to grow, or someone looking to retire among lilies and laughter—this is the address your future self will thank you for.

Children will have childhoods full of climbing trees, not traffic noise.  
Parents will find peace in garden strolls, not grocery runs.  
Seniors will rediscover joy in morning walks and evening chats under the gazebo.





# TYPICAL FLOOR PLAN



## AREA STATEMENT

Flat No.	Facing	Unit	Area in sft.
01.	East	3 BHK	4270.017 sft.
02.	East	3 BHK	4270.017 sft.



While the project offers complete escape from urban noise, it still ensures you're well-connected to the world outside. Markets, Schools, Colleges, Public Transports, Hospitals, and Main city arteries are all a short drive away. So you get peace and practicality, nature and network, calm and convenience.



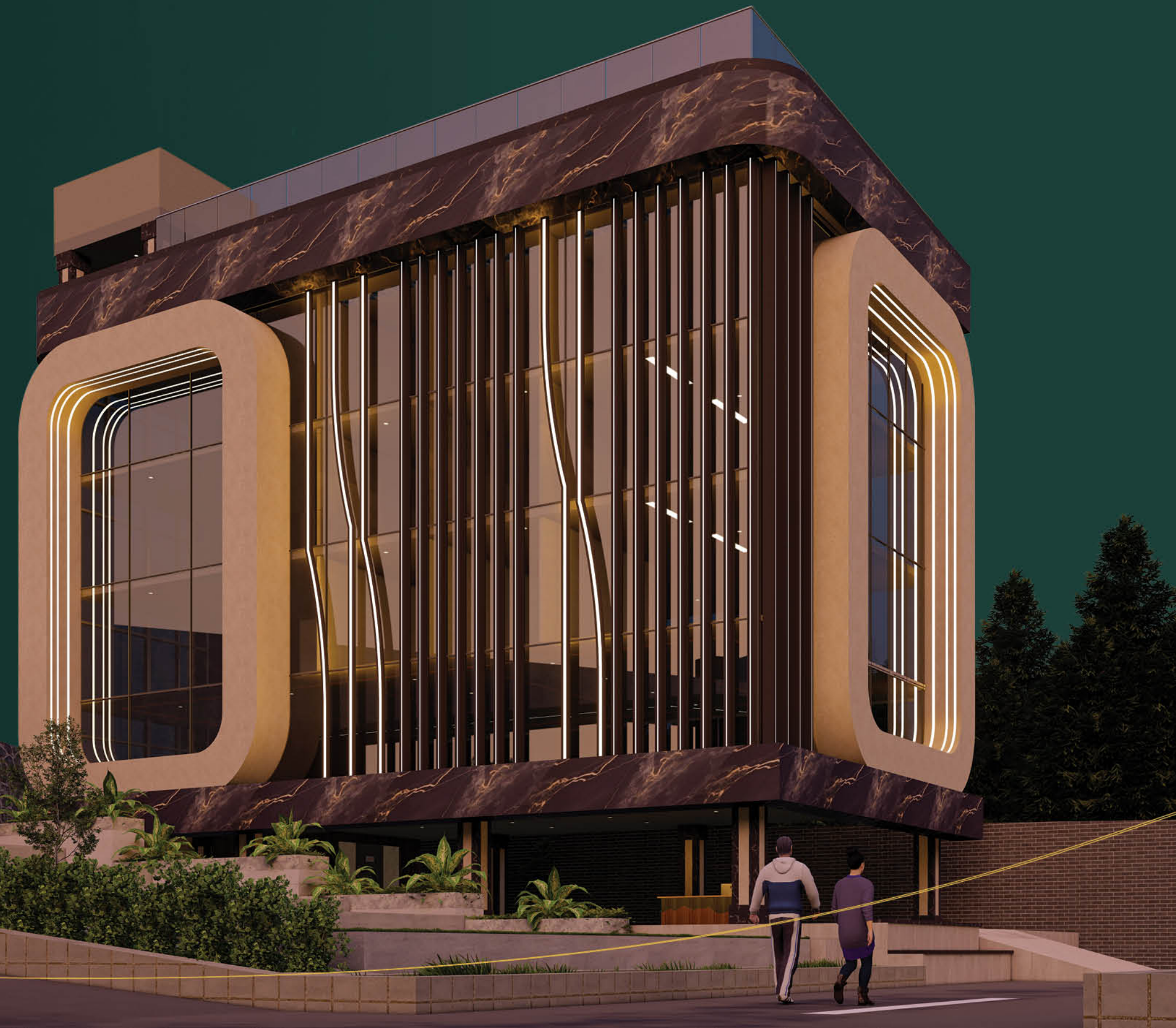
A little more nature,  
**A LOT MORE YOU TIME.**

And when it comes to amenities, the clubhouse takes center stage. More than just a building, it's a buzzing social and lifestyle hub where convenience and community meet. With a banquet hall ready to host everything from elegant dinners to milestone birthdays, and a mini theatre perfect for cozy film nights, entertainment is never far. The reception and working lounge offer the ideal setup for remote work or casual meetings, while the business lounge brings professionalism right to your doorstep.

# CLUB HOUSE

## AMENITIES

- Multi Purpose Hall
- Reception and Guest lounge
- Maintenance Office
- Gym
- Yoga/Aerobics Desk
- Supermarket (Provision)
- Spa (Provision)
- Saloon (Provision)
- Baskt Ball Court
- Multi Purpose Room
- Business Lounge
- Amphitheater
- Terrace Swimming Pool
- Indoor Games
- Library
- Kids Zone
- DG Back-up



# Every breath is a FRESH BEGINNING

Fitness lovers will feel right at home with a fully-equipped gym, a dedicated yoga and aerobics deck that overlooks the gardens, and an indoor badminton court for spirited games regardless of the weather. On warm evenings, fire up the barbecue counter and gather with neighbors for grilled delights and laughter under the stars



## OUTDOOR

Cricket Net  
Basket Ball Hoop  
Toddlers play area  
Swings for Kids



## INDOOR & OUTDOOR AMENITIES

### SPA & ENVIRONS

Designer Landscape  
Meditation /Healing Gardens  
Wellness Centre With Spa, Steam & Sauna





## REFRESH, RELAX, REPEAT.

And when you're ready to unwind, the rooftop swimming pool awaits—offering sky-high relaxation with panoramic views of treetops, sunsets, and the occasional bird gliding overhead.





The details, that drive  
**EXCELLENCE**



#### STRUCTURE

RCC-framed structure



#### WALLS

Red Brick masonry for peripheral and internal walls.



#### PLASTERING & PAINTING

**Internal walls** with smooth plaster finish and emulsion paint

**External walls** with water-proof plaster and exterior grade emulsion paint.



#### DOORS

**Main Door:** Veneer finish with solid wood frame with designer flush door shutter/Veneer doors.



#### FLOORING

- Vitrified tiles for Foyer, living, dining and granite for staircase
- Vitrified tiles / flamed granite for kitchen and utility area
- Wooden laminate or vitrified tiles for all bedrooms and family room.
- Anti-skid ceramic tiles for balcony and toilets.



#### KITCHEN

Water point & power provisions.



#### WINDOWS

Three-track UPVC shutters with clear glass



#### BATHROOM

- Ceramic glazed tiles dado up to 8 feet height
- White EWC and washbasin with granite
- CP fittings and accessories



#### PLUMBING

- Premium quality CP fittings.
- Premium quality PVC drainage & storm water pipes.



#### ELECTRICAL

- Concealed wiring with PVC insulated copper wires and modular switches.
- Sufficient power outlets and light points Up to 8 KW power for all villas.
- Backup power of up to 8 KW to all villas and common services.
- TV and telephone points in living, family and all bedrooms.
- ELCB and individual meters for all villas.
- Provision for AC in all rooms.



#### LIFTS

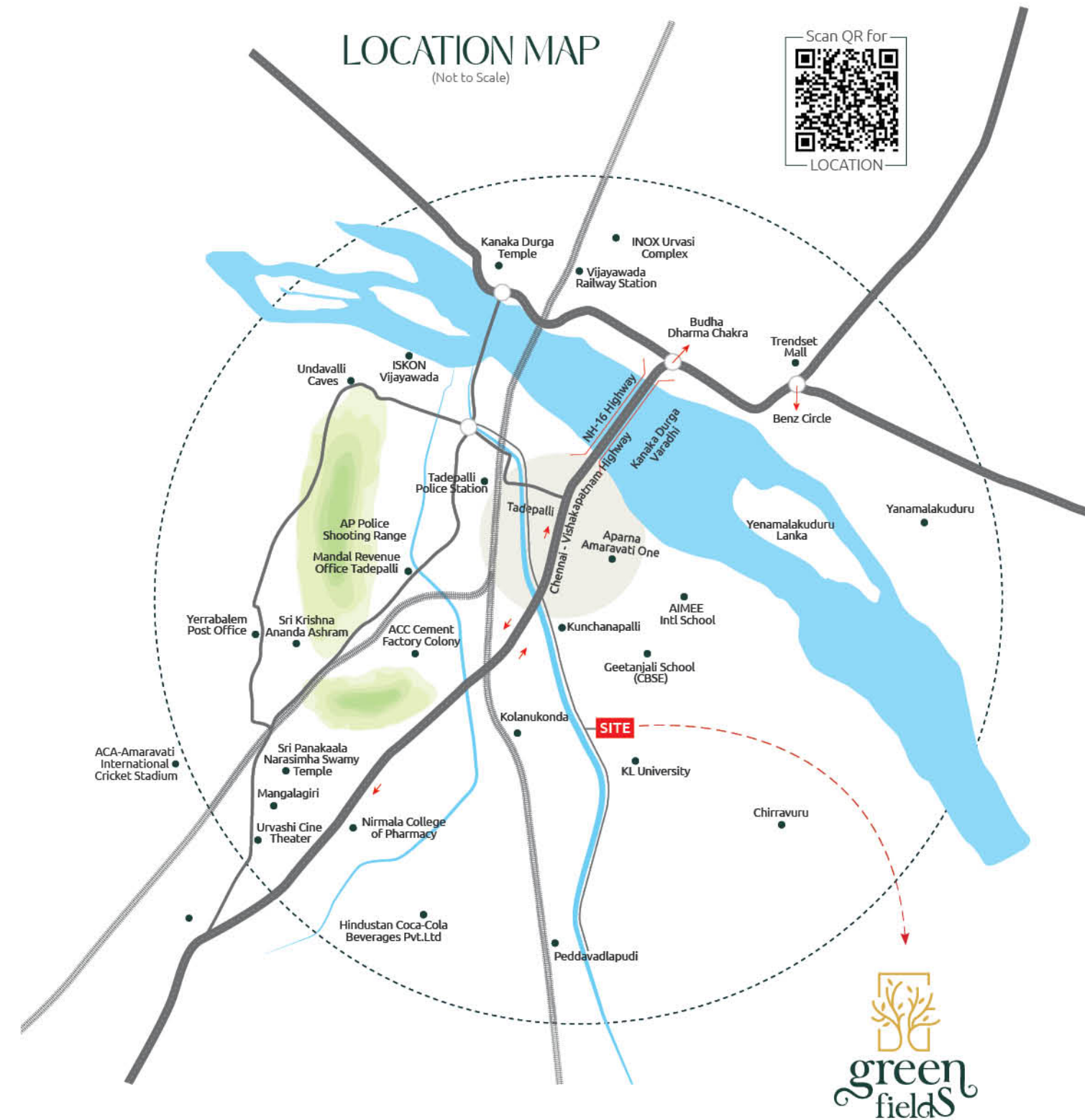
We are providing provision for lift for added convenience. Customer needs to fix the lift as per their requirement / brand priority.



#### BACK-UP

100% DG Back-up

## SPECIFICATIONS



## PROXIMITY

### CONNECTIVITY

- 02 minutes to NH 16 Chennai-Kolkata Highway
- 07 minutes to Central Bus Stand
- 10 minutes to Vijaywada Railway Station
- 10 minutes to Mangalagiri IT Park
- 20 minutes to High Court
- 20 minutes to Amaravathi
- 20 minutes to Assembly & Secretariat
- 25 minutes to Airport
- 25 minutes to Surrounded with all HOD and Commissionerate Offices

### SHOPPING & ENTERTAINMENT

- 02 minutes to D-Mart
- 02 minutes to Ratnadeep Super Market
- 03 minutes to Ushodaya super market
- 08 minutes to Besant road
- 08 minutes to PVP Mall & Cinopolis
- 10 Minutes to Trendset Mall & Capital cinemas
- 10 minutes to LEPL Inox Cinemas

### QUALITY EDUCATION

- 05 minutes to AIMEE Internaital Scool
- 05 minutes to Geethanjali school
- 02 minutes to Aravinda School
- 02 minutes to KL University
- 10 minutes to NRI Medical College
- 15 minutes to Nagarjuna Univeristy
- 20 minutes to SRM & VIT Universities

### MULTI-SPECIALITY HOSPITALS

- 02 minutes to Manipal Hospital
- 06 AIIMS Hospital
- 10 minutes to NRI Hospital