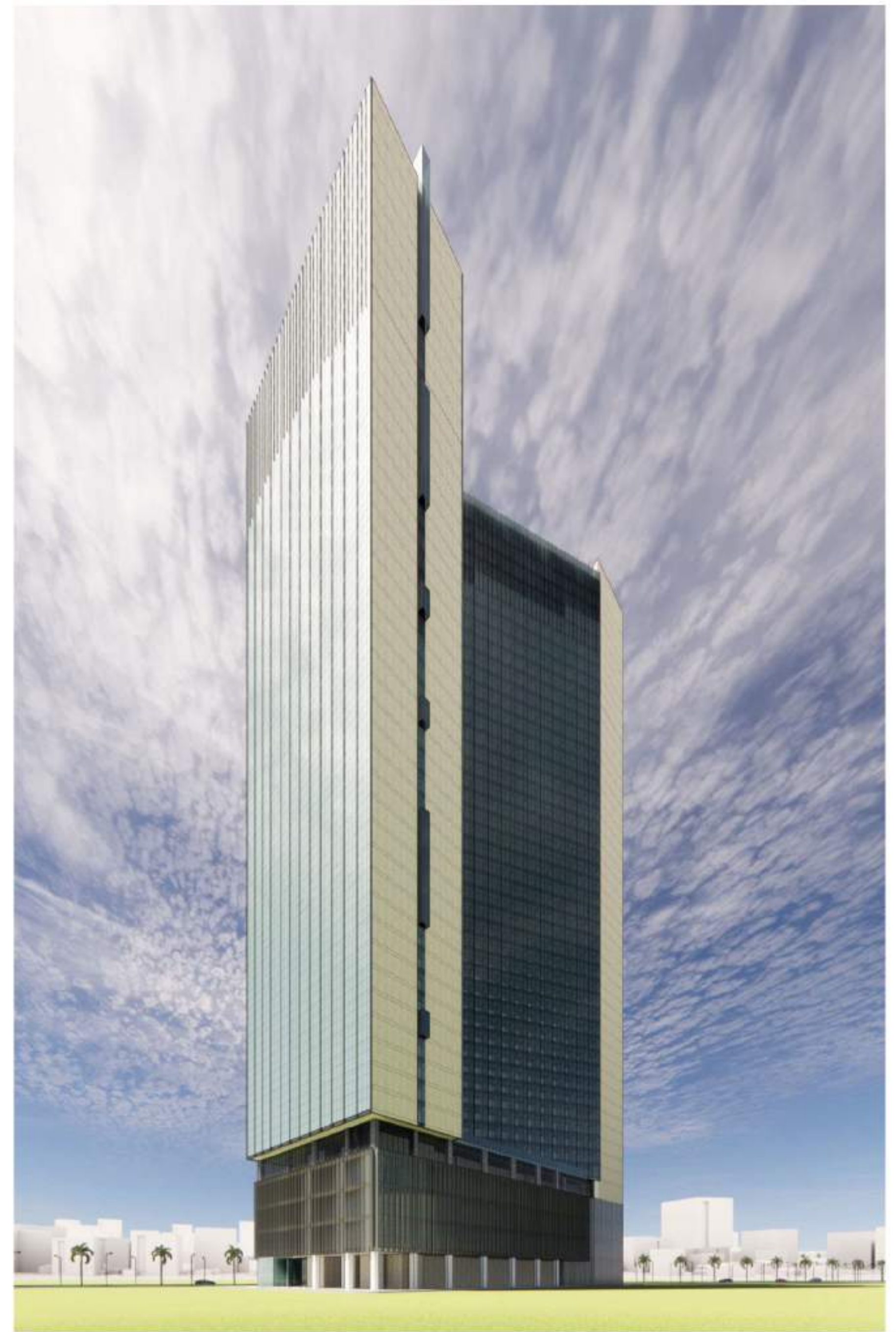




HYDERABAD ONE



Property is located amidst high density IT/ITES office space cluster



Wipro Campus

CA Technologies

Subject Property

ICICI

Capgemini

Cognizant Technologies

Cyent Technologies

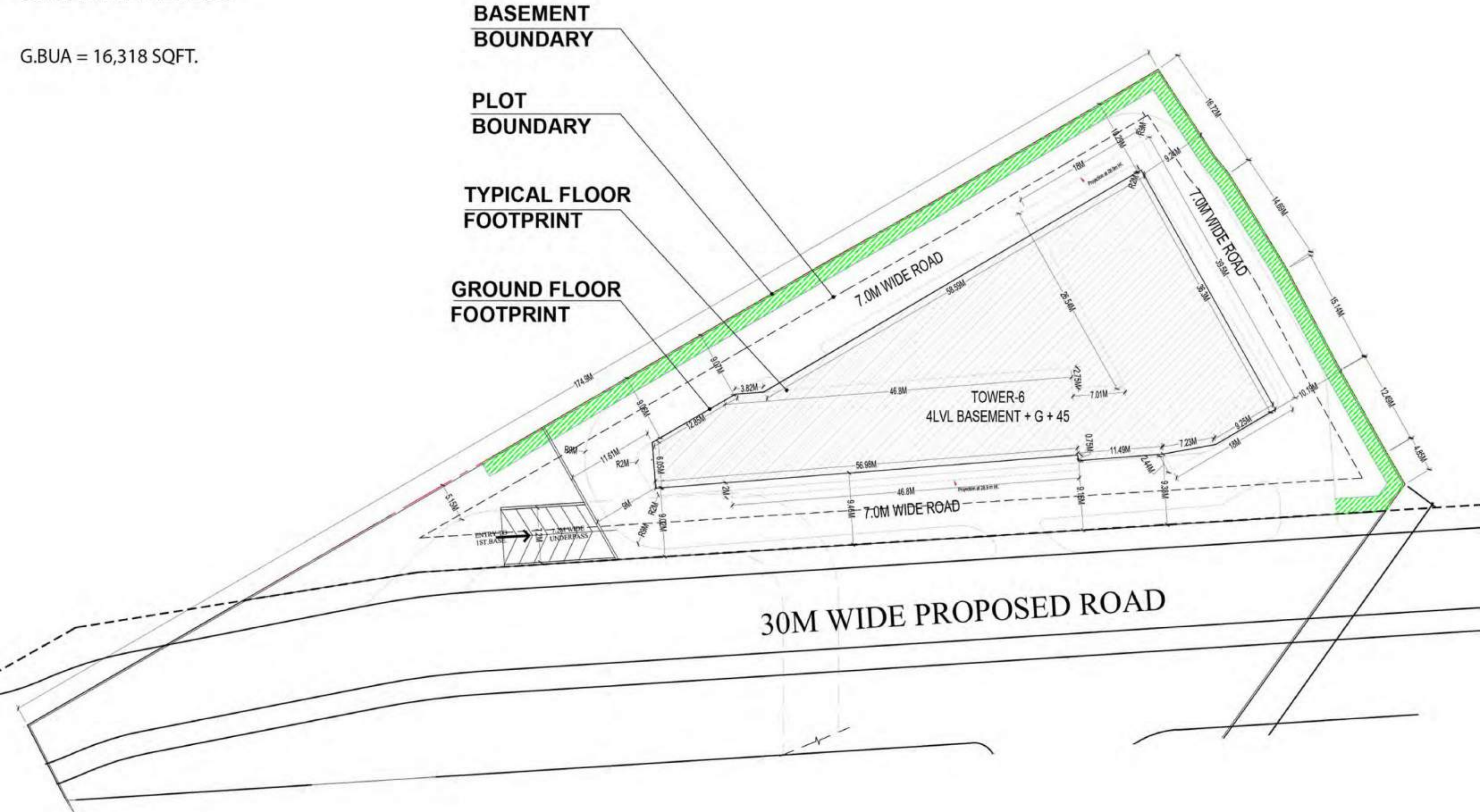
Amazon Development Center

Amazon India

Honeywell India

SITE PARAMETERS

G.BUA = 16,318 SQFT.



GROUND FLOOR PLAN

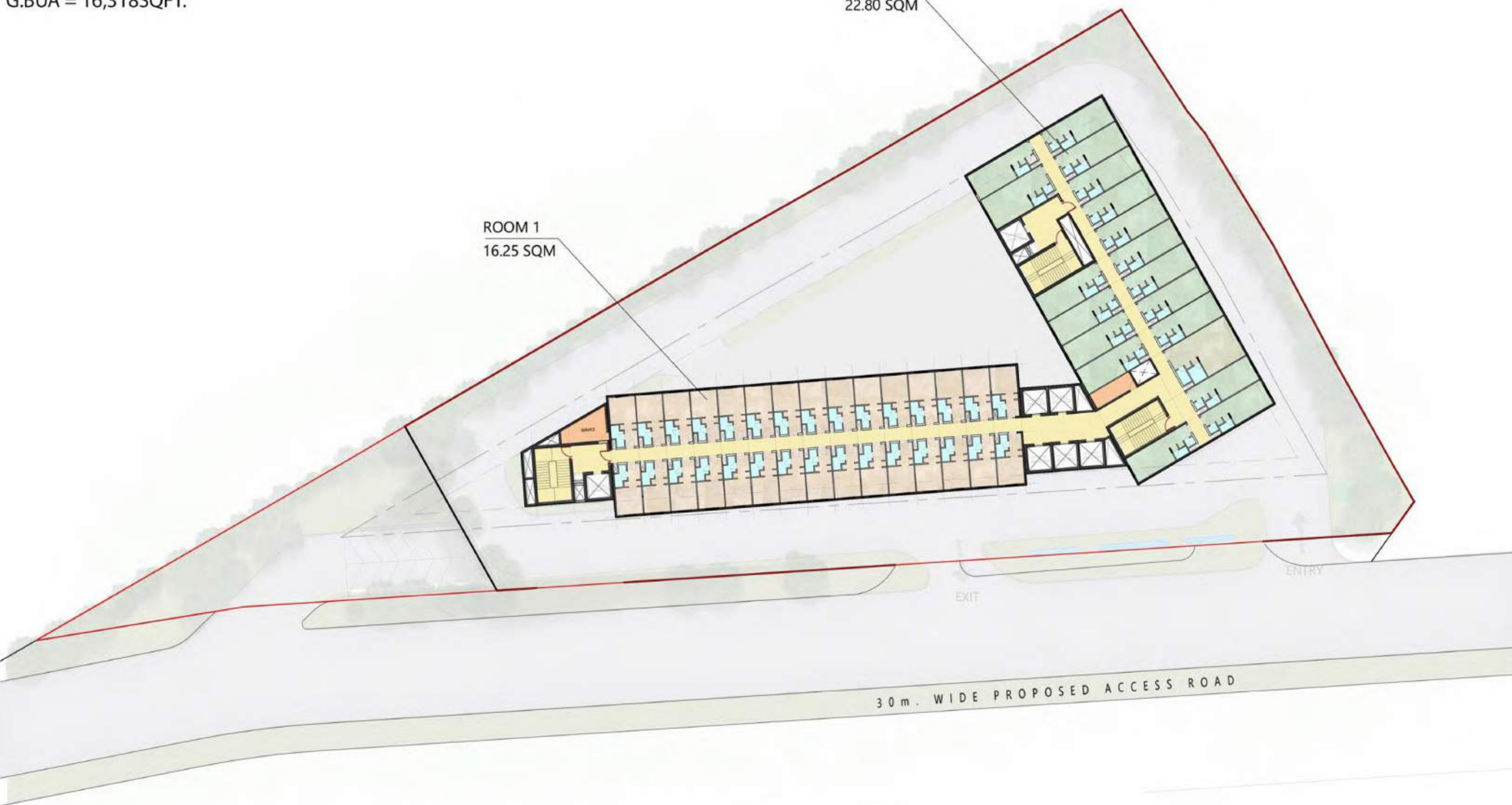


TYPICAL FLOOR PLAN

G.BUA = 16,318SQFT.

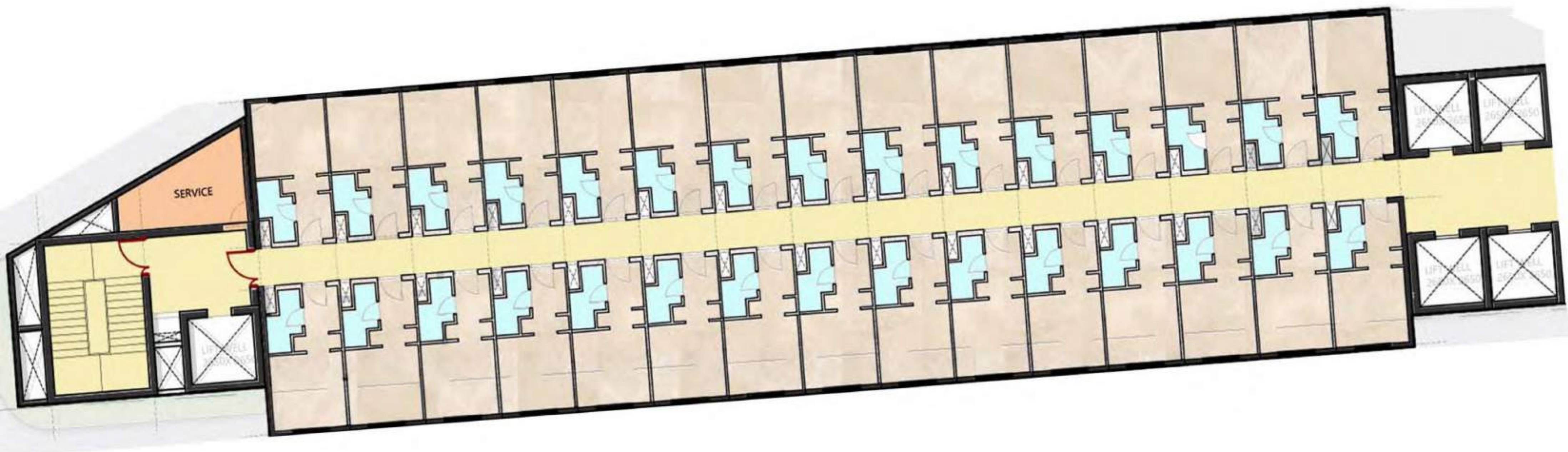
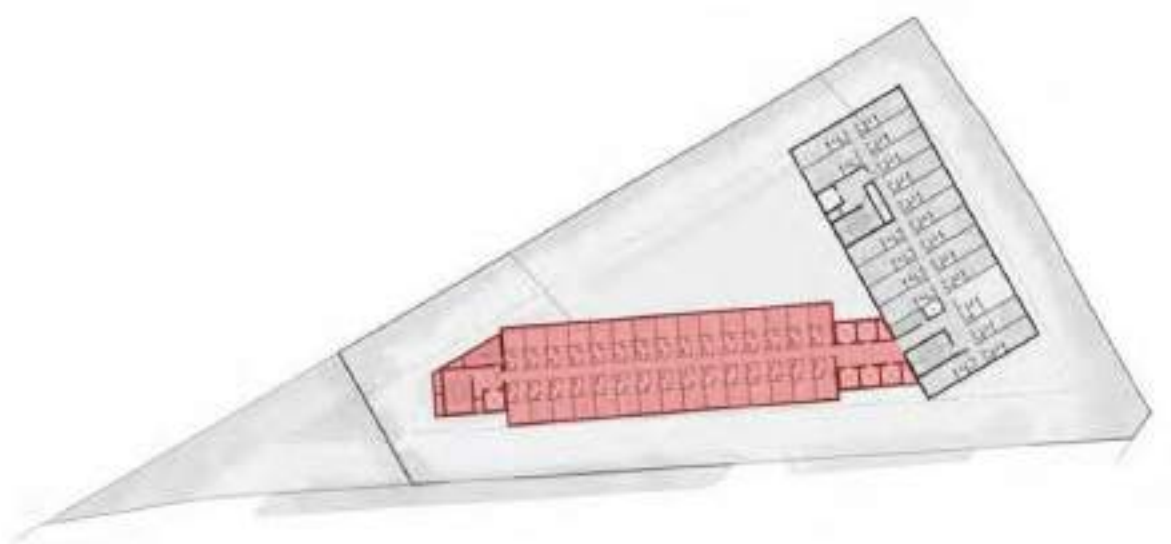
ROOM 2
22.80 SQM

ROOM 1
16.25 SQM

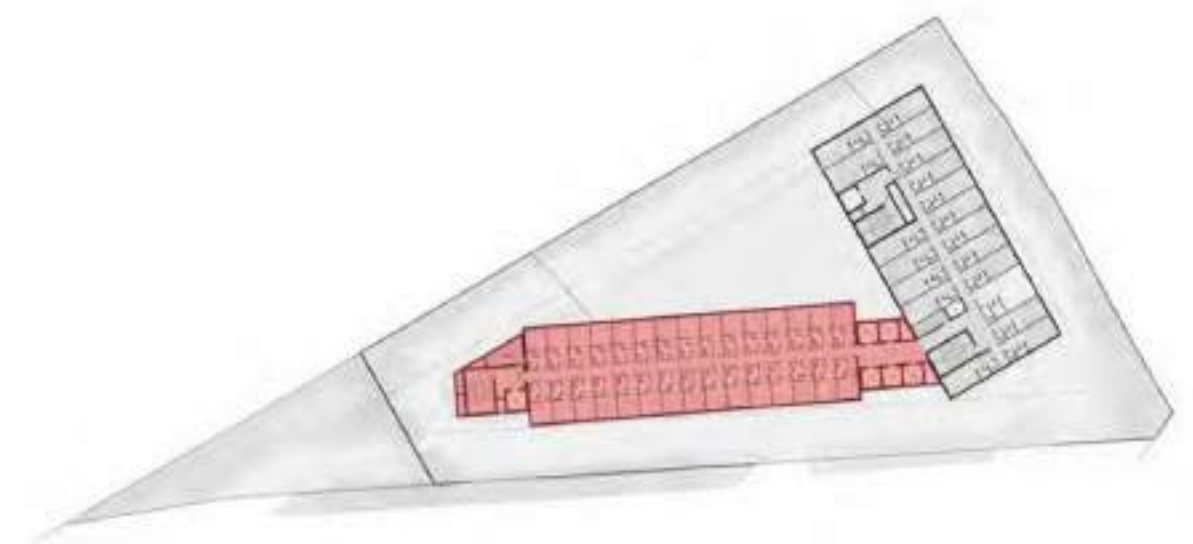
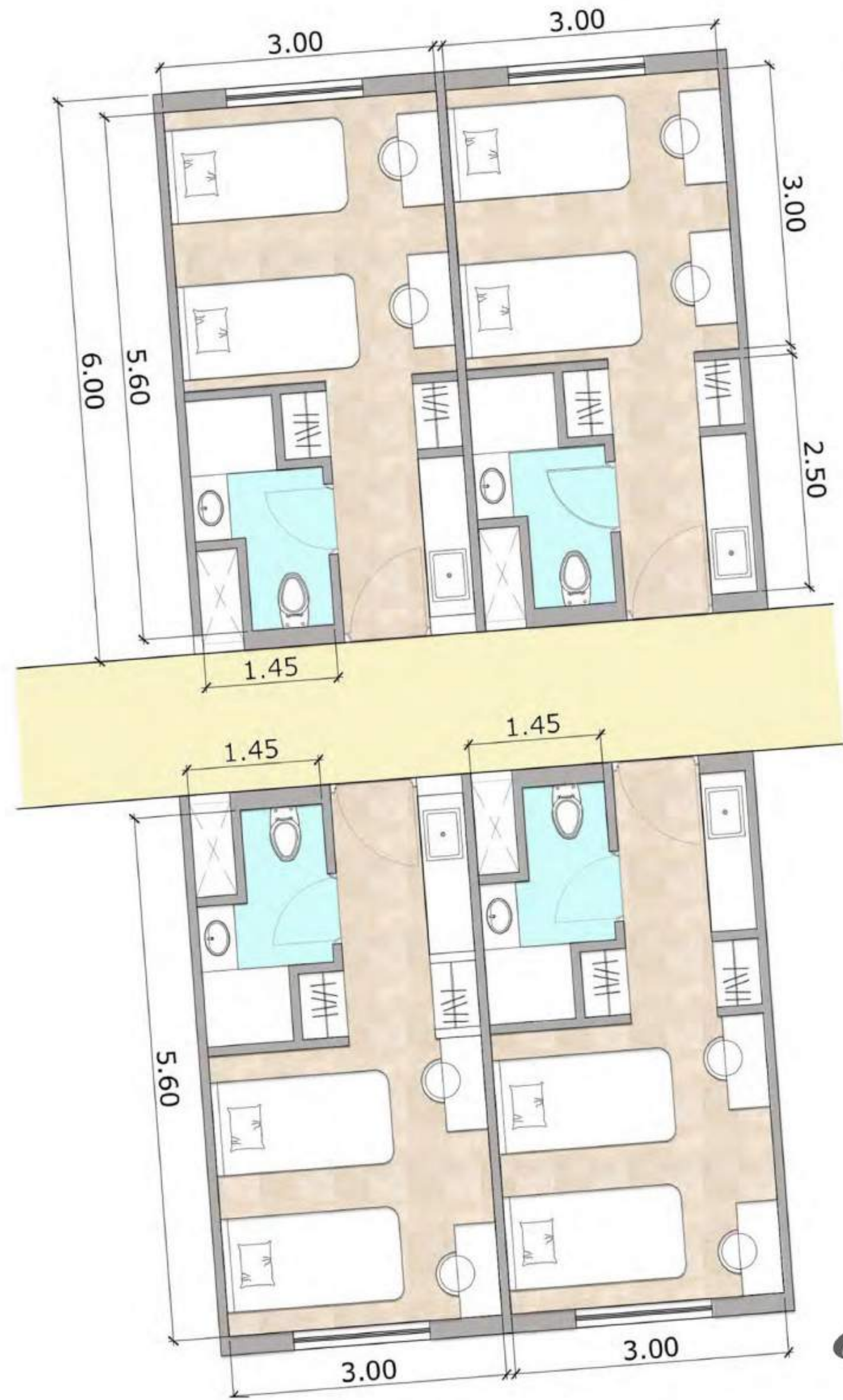


30 m. WIDE PROPOSED ACCESS ROAD

TYPICAL FLOOR PLAN
SOUTH WING

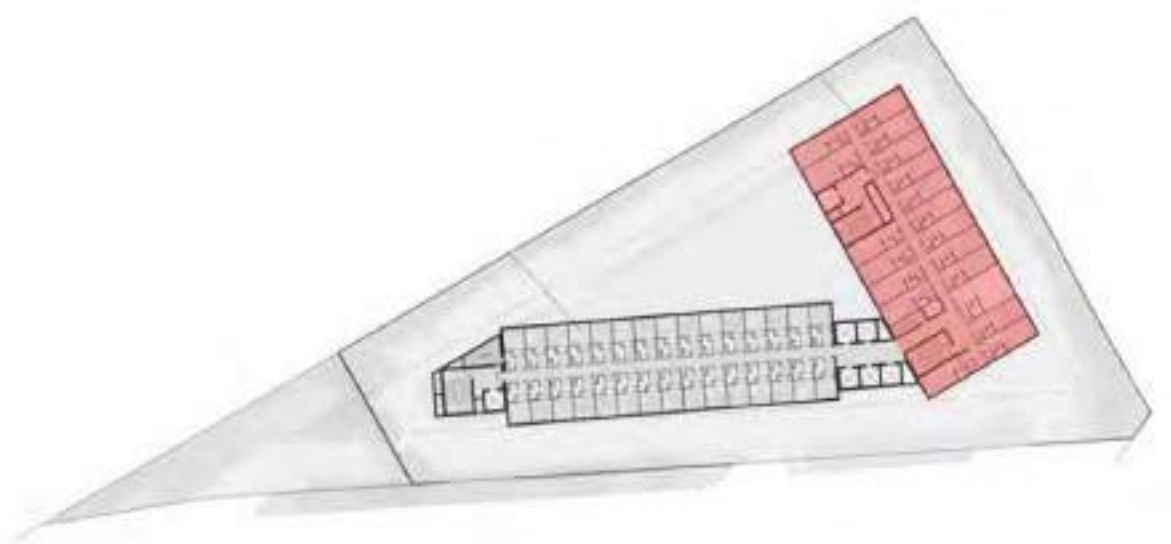


TYPICAL ROOM LAYOUT



LAYOUT A
AREA = 16.25 SQM.

TYPICAL FLOOR PLAN
EAST WING



TYPICAL ROOM LAYOUT



LAYOUT B
AREA = 22.80 SQM.

NORTH

H1 : TYPICAL - 06 - 30 FLOOR PLAN

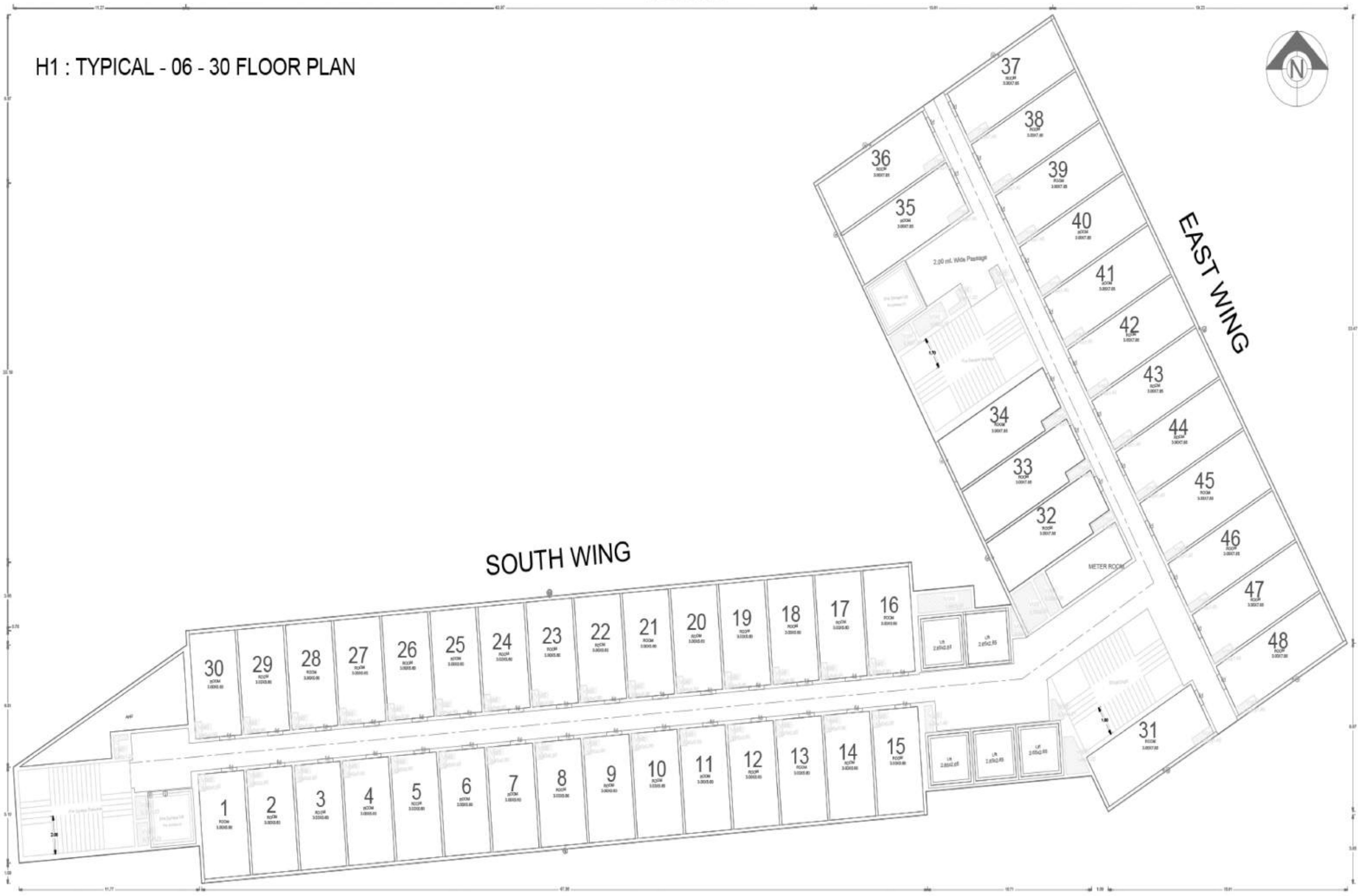


WEST

EAST

SOUTH WING

EAST WING



TYPICAL - 6,7,8,10,11,12,13,15,16,17,19,20,21,22,24,25,26,27,29,30 FLOOR PLAN (SCALE=1:100)

SOUTH

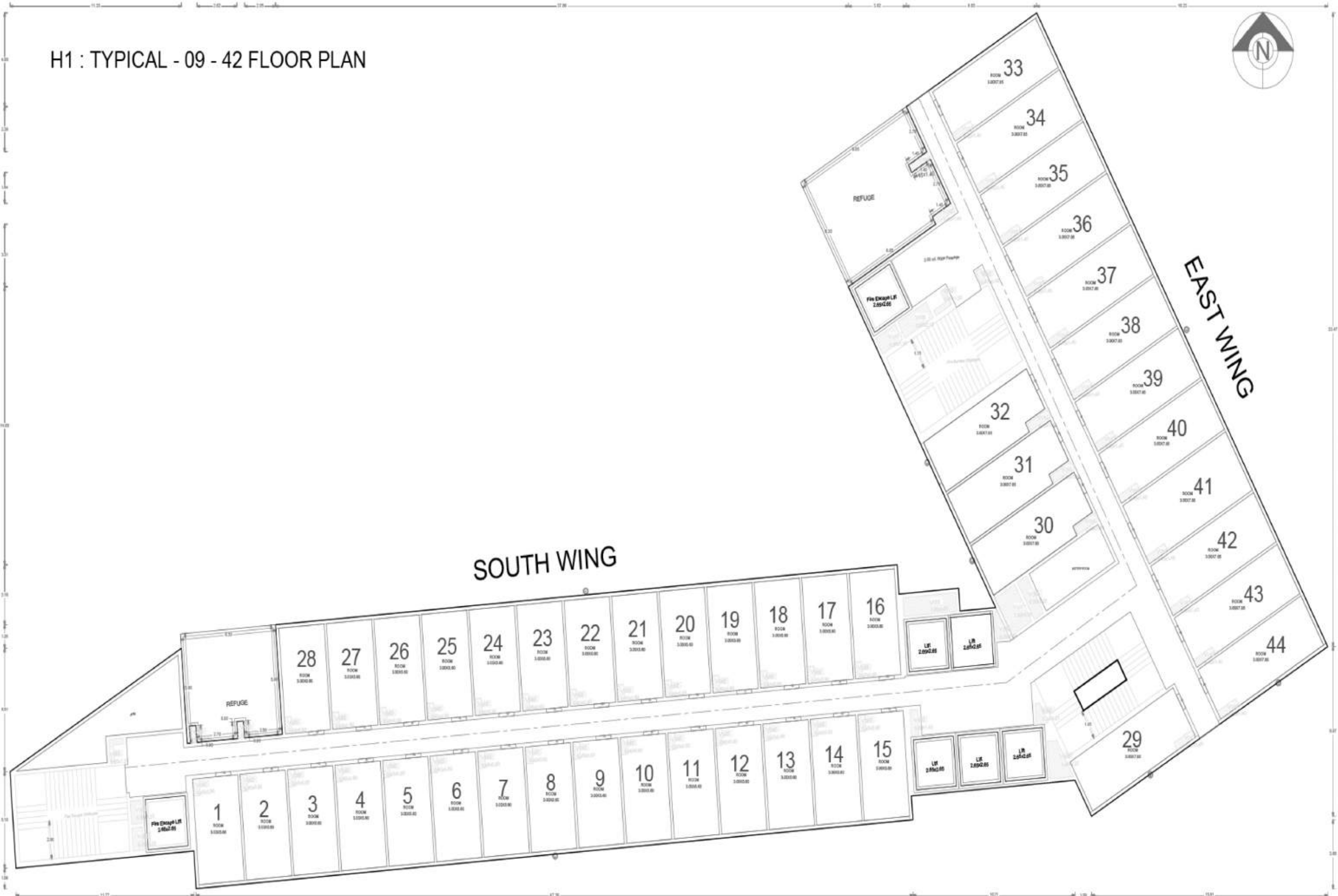
NORTH

H1 : TYPICAL - 09 - 42 FLOOR PLAN



WEST

EAST



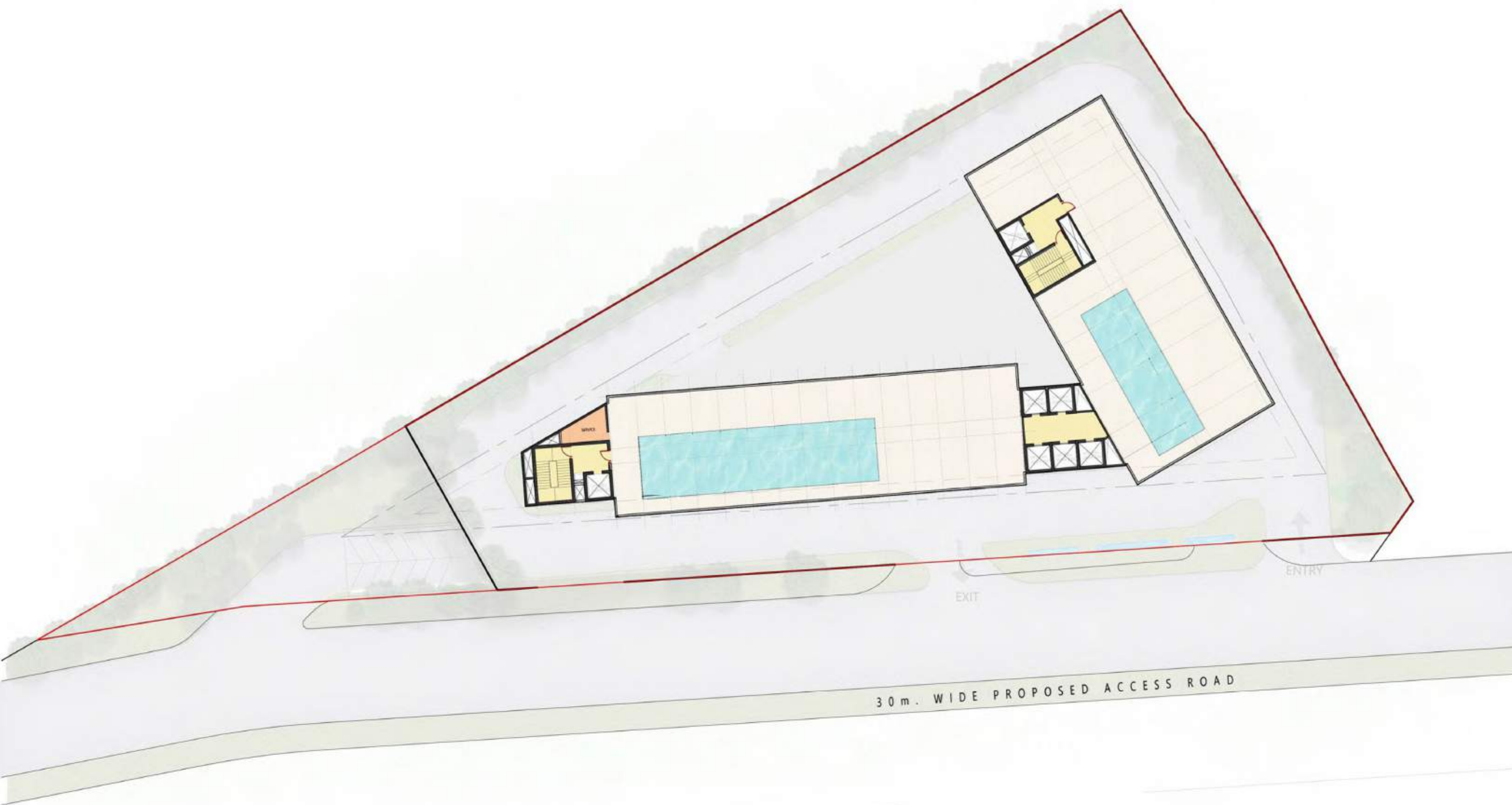
SOUTH WING

EAST WING

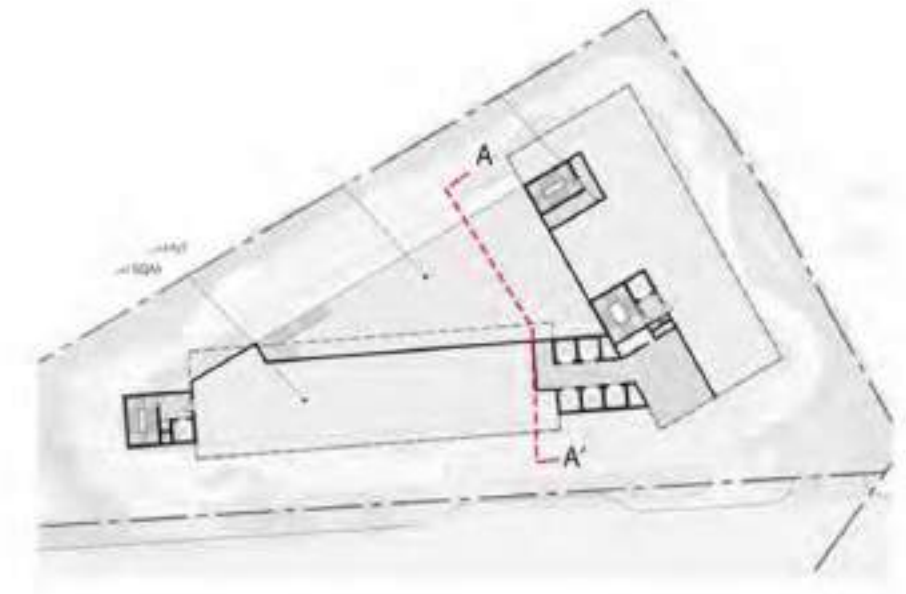
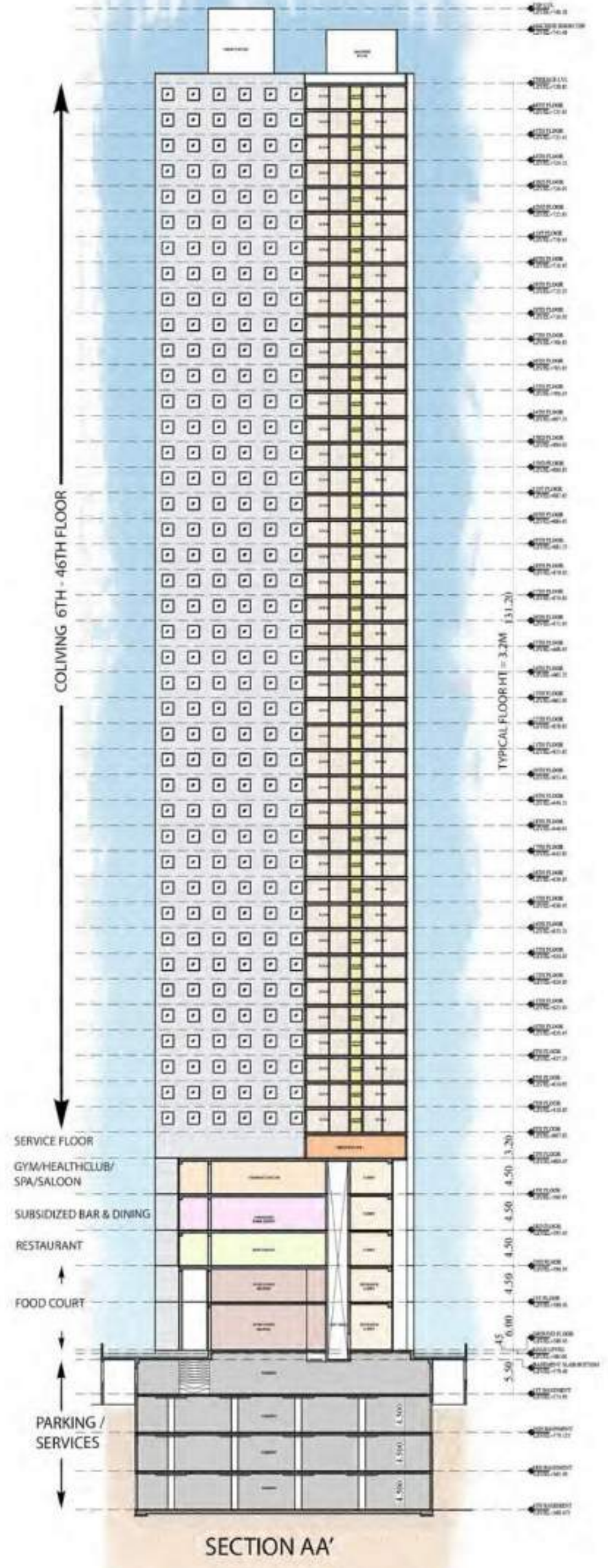
TYPICAL - 9,14,18,23,28,33,37,42 FLOOR PLAN (SCALE=1:100)

SOUTH

TERRACE PLAN



SCHEMATIC SECTION





Architect: Chapman Taylor
<https://www.chapmantaylor.com/>

Structural:
Strudcom <http://strudcom.com/>

MEP: Design Tree
<http://www.designtreeconsultants.com/clients.php>

Chapman Taylor

Strudcom

Design Tree



Vertical Transportation Consultants :

PVN Associates <https://www.pvnassociates.com/>

Traffic Consultants : Third Rock

<http://thirdrockindia.com/engineering-services/>

IGBC : Godrej

<https://www.godrejgreenbuilding.com/certService.aspx>

Facade & Lightning Consultant : FCD India

<https://www.fcdpl.com/>

Landscaping & Common Areas Interiors Consultants:

Chapman Taylor

Signage Consultant : Hindustan Signages

<http://www.hindustansignages.com/>

Developer:

Sensation <http://sensationcapital.com/>

Development Advisor : Phoenix Group

<https://www.phoenixindia.net/>

PVN

Godrej

Third Rock

FCD



We are creating India's first, fully integrated, premium coliving facility where the global executive at all levels will feel at home.

