



A project by



SANVI'S KOWSALYA MANIDWEEPAM

Beauty to live in

LUXURY LIFESTYLE APARTMENTS
@ NIZAMPET ROAD, BACHUPALLY



REFRESH,
THE WAY YOU
IMAGINED A HOME.



RERA Regn. No. P02200002912



FROM A 
NAME THAT'S
DEDICATED TO YOU

Start refreshing the way you see life, look at the way homes are made differently, refresh your perspective of a home because here comes Sanvi Infra with Kowsalya Manidweepam, from a group of builders that comes with a vast experience. The group brings its experience of creating individual houses, apartments and several other types of projects. Here comes from them yet another home made with dedication and determination to give you the best.

SANVI'S
KOWSALYA
MANIDWEEPAM
Beauty to live in



SANVI'S
KOWSALYA
MANIDWEEPAM

Beauty to live in


ENJOY
WITH FAMILY
IN GOOD
ATMOSPHERE

KOWSALYA MANIDWEEPAM

MADE TO
LAST STRONG
VERY LONG

SANVI'S
KOWSALYA
MANIDWEEPAM
Beauty to live in

MASTER PLAN

SANVI'S KOWSALYA MANIDWEEPAM

Beauty to live in

LEGEND

- | | | |
|------------------|------------------------|--------------------------|
| 1. Entry | 6. Courtyard Landscape | 11. Children's Play Area |
| 2. Driveway | 7. Outdoor Fitness Gym | 12. Multipurpose Court |
| 3. Roundabout | 8. Designer Pergola | 13. Linear Landscape |
| 4. Cricket Pitch | 9. Seated Gallery | 14. Jogging Track |
| 5. Party Lawn | 10. Badminton Court | |



EVERYTHING TO GIVE YOU COMFORTABLE LIVING

Kowsalya Manidweepam has a lot of good things such as plenty of open space, pleasant atmosphere, club house and much more. It is a residential community of three blocks of A, B and C. The residential arena has ample spaces to play, enjoy and live comfortably. Designed to give lot of ventilation, its a perfect place to live with privacy. It offers lot of recreation and social life options.

Towards Bachupally 'X' Roads

100'-0" Wide Road

Towards Nizampet




ENJOY THE
NATURE'S BEAUTY
AND ITS FRESHNESS

SANVI'S
KOWSALYA
MANIDWEEPAM
Beauty to live in

DESIGNED TO
VAASTHU IN
EVERY CORNER

Kowsalya Manidweepam is a residential creation designed to be a communion of 3 BHK and 2 BHK flats with a whole lot of space and conveniences that come with immense planning. The 2 BHK flat area is of 1184 sft. We have ensured that all the flats and the entire community are designed according to Vaasthu without deviating from its principles. All in all, it has been designed to help the dwellers benefit from the wonderful living conditions it offers.



2 BHK
2D VIEW
EAST FACING
FLAT NO. C-9



1184 SFT.

SANVI'S
KOWSALYA
MANIDWEEPAM

Beauty to live in

Living Space

- Entrance
- Drawing
- Living
- Dining
- Hand Wash
- Balcony

Kitchen System

- Kitchen
- Pooja
- Wash Area

Bedrooms

- Common Toilet
- M. Bedroom + Toilet
- Children's Bedroom

2 BHK

3D VIEW EAST FACING
FLAT NO. C-9



Living Space

- Entrance
- Drawing
- Living
- Dining
- Hand Wash
- Balcony

Kitchen System

- Kitchen
- Pooja
- Wash Area

Bedrooms

- Common Toilet
- Bedroom + Toilet
- M. Bedroom + Toilet
- Children's Bedroom

SANVI'S
**KOWSALYA
 MANIDWEEPAM**
 Beauty to live in

3 BHK

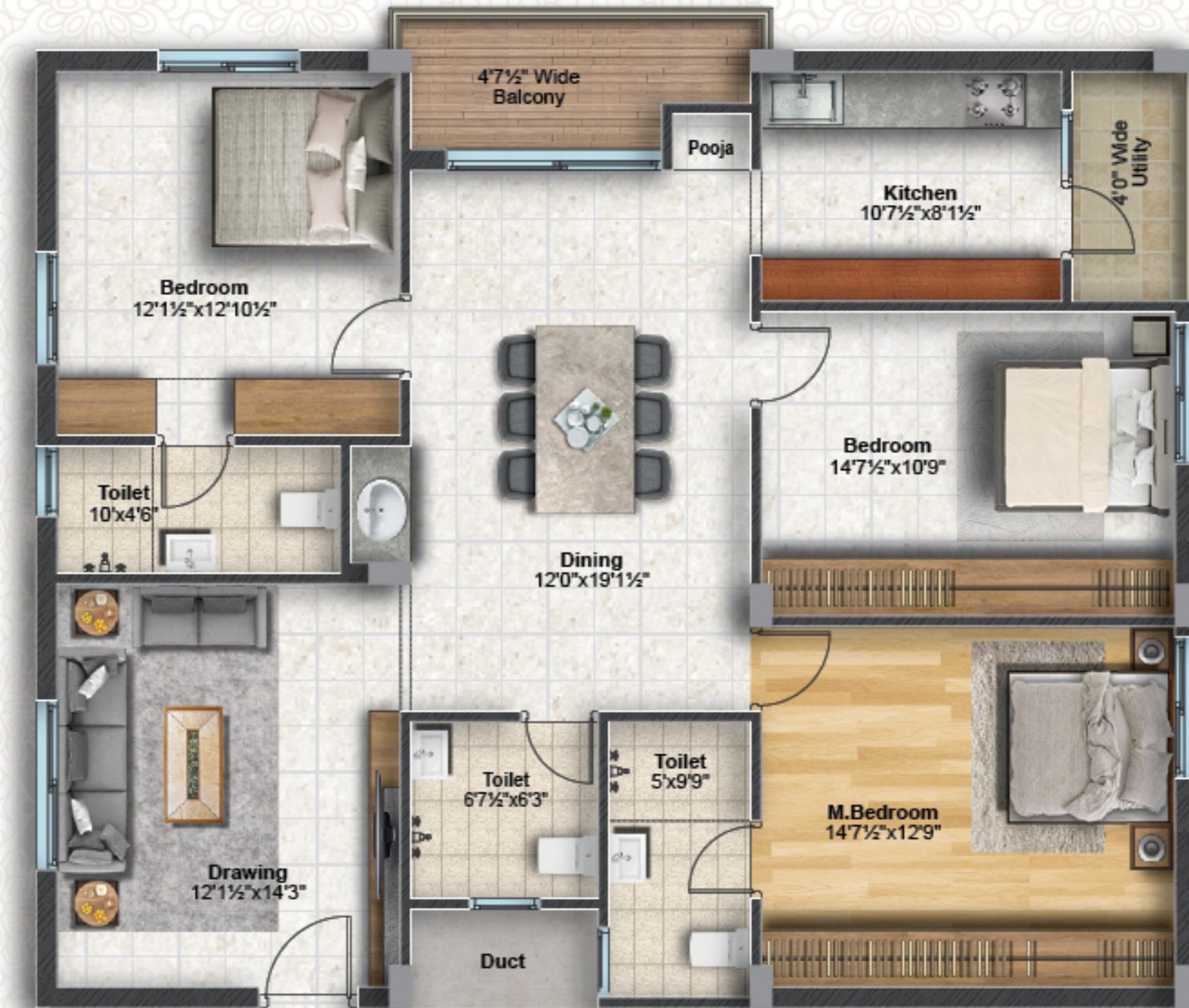
3D VIEW WEST FACING
 FLAT NO. C-27



PLANNED
 TO BE NICELY
 SPACIOUS

At Kowsalya Manidweepam, the 3 BHK flats are of area 1832 sft. The best is we have designed every corner such that you can use it to the most. You can make it into a home of your dreams and desires.

3 BHK 2D VIEW
 WEST FACING
 FLAT NO. C-27



1832 SFT.


**YOUR OBJECT
OF LONG LASTING
ADMIRATION**

Kowsalya Manidweepam is designed to be a community that you will admire for a life time. It has been imagined such that the movement and momentum both inside and outside the community is easy and pleasant. It has been executed as per the HMDA's approved plan, giving the customers no reason for worry. It will be your thing of pride always.

SANVI'S
KOWSALYA
MANIDWEEPAM
Beauty to live in





*MANY OPTIONS
OF RECREATION
AND FUN*

At Kowsalya Manidweepam, we have brought to you many options of leisure. Everyone from tiny tots to grandparents will have fun and recreation. There are amenities in every corner and of various types. We have thought about young professionals, couples with kids and have also provided a baby-care centre. Most of all, there is a club house. Here, you'll discover peaceful and comfort living in every aspect.

AMENITIES & FEATURES

- | | | | |
|--|---|--|--|
| <ul style="list-style-type: none"> ■ CC TV Surveillance ■ 24 x 7 Security ■ Children's Play Area ■ Shuttle Court ■ Basketball Court | <ul style="list-style-type: none"> ■ Gym / Fitness ■ Baby Care Centre Room ■ Yoga / Meditation Room ■ Skyview Swimming Pool ■ Work Station Space | <ul style="list-style-type: none"> ■ Doctor's Consultation Room ■ Elders' Sitting Area (Outside) ■ Solar Fencing for Compound Wall ■ Pharmacy / Clinic Space ■ Library Room | <ul style="list-style-type: none"> ■ Office Space ■ Food Court ■ Supermarket ■ Party Hall ■ ATM Space |
|--|---|--|--|





CLUB HOUSE AMENITIES



Gym / Fitness Centre



Digital Games



Sky View Swimming Pool



Yoga / Meditation Room



Games Zone



Food Court



Badminton Court



Guest Rooms



Conference Hall



Pharmacy / Clinic



Stores



Bank's ATM



Party Hall



Baby Care Centre



Library

THE COMPLETE LIVING COMMUNITY

Kowsalya Manidweepam is a home that offers you a lot of spaces and conveniences. There are plenty of amenities and facilities that we have provided. It has corners to socialise, spend time with family and have a bonding time with neighbours. There is everything from a super market to shuttle court.

KOWSALYA MANIDWEEPAM

KOWSALYA MANIDWEEPAM

ADMIRE THE
GOOD LOOKS EVEN
IN THE SUNSET

SANVI'S
KOWSALYA
MANIDWEEPAM
Beauty to live in




**THE BEST
COMFORT OF
LIVING AND
STANDARD
OF LIFE**



SANVI'S KOWSALYA MANIDWEEPAM

Beauty to live in

SPECIFICATIONS		
<p>STRUCTURE Earthquake resistant foundation with RCC framed structure</p>	<p>GRANITE & KITCHEN Granite platform with Stainless Steel sink Provision for Water Purifier and Chimney in the kitchen</p>	<p>GENERATOR Generator power back-up for inside flats of all lights and fans, total common areas such as lifts, staircases, corridors, parking areas, children's play area and club house</p> <p>CAR PARKING AREA VDF flooring in Cellar and Driveways</p>
<p>PEST CONTROL TREATMENT Pest control treatment for foundation and garden areas</p>	<p>ELECTRICAL Concealed PVC Pipes and Copper wiring with adequate points for Lights, Fans, Calling Bell, Refrigerator, TV, AC and Inverter. CABLE : FINECAB / ELLEYS make / ISI standard SWITCHES : ELLEYS / ANCHOR make / ISI standard</p>	<p>SEWAGE TREATMENT PLANT (STP) Fully treated water made available through exclusive water softening and purification plant for bore well water Treated sewage water will be used for landscaping and flush tanks</p>
<p>SUPER STRUCTURE Red bricks of best quality with cement mortar (outer walls of 9" and internal walls of 4½" thickness)</p> <p>PLASTERING Plastering (Internal and External) in cement mortar in double coat with sponge finish</p>	<p>DOORS & WINDOWS Main Door and frame with teak wood and duly polished Providing GODREJ / EUROPA lock for Main Door Internal Doors are made of teak frames with designed flush shutters and fitted with ISI standard hardware All windows are of UPVC with sliding glass doors fitted with mosquito mesh and grills French doors and UPVC sliding door with glass in the balcony</p>	<p>RAIN WATER HARVESTING PITS Providing adequate rainwater harvesting pits for collecting and storing water for future productive use</p> <p>SECURITY Intercom facility from flat to flat and flat to security and club house CCTV cameras for common areas, club house and driveway</p>
<p>PAINTING Internal Walls with Asian / Birla Wall Care Putty and Tractor Emulsion Paint All Corridors, Staircases and Common areas are of Asian / Birla Wall Care Putty with Paint Texture Paint and Asian / Birla Wall Care Putty for building outside walls</p> <p>SANITARY All sanitary items and CP fittings are of ELVIS / HINDWARE / CERA make / ISI standard</p>	<p>TILES FLOORING Vitrified Tiles of size 800mm x 800mm of reputed make in Living Room, Dining and Bed Rooms. Anti-skid Vitrified Tiles in the Toilets, Utility areas and Balconies. Wooden designed Vitrified Tiles of 600mm x 600mm size in the Master Bedroom. Ceramic tiles upto 6'-0" height in the bathrooms. Tiles upto 2'-6" height glazed tiles in the kitchen.</p>	<p>WATER SUPPLY Water from sumps to flats with Hydro Pneumatic System and Softener</p> <p>STAIRCASE & CORRIDORS Granite steps with SS railing in staircase and anti-skid tiles in corridors of standard make</p> <p>LIFTS 8 Passengers capacity of Lifts - KONE make / ISI standard</p>
<p>NOTE a) Shelves, Chajjas, Lofts, Arches or any kind of modifications / alterations are not allowed b) Flats will be handed over for wood work / interiors etc. only after delivery of possession c) Stamp Duty & Registration Fee extra as applicable as per the Government norms d) GST extra as applicable as per the Government norms</p>		



LOCATION PLAN

(not to scale)



PROXIMITY

EDUCATIONAL INSTITUTIONS

Vikas Concept School	: 3 min
Vignan School	: 3 min
Sentia Global School	: 5 min
Kennedy / Silver Oaks	: 5 min
Sangamithra School	: 5 min
Ambitus School	: 10 min
Unicent School	: 10 min
Shikhara	: 10 min
International School	: 10 min
Delhi Public School	: 18 min
Oakridge	: 20 min
International School	: 20 min
Mamatha Medical College	: 5 min
Gokaraju Rangaraju	: 3 min
VNR - VJIE	: 10 min
JNTU	: 10 min

HOSPITALS

SLG Hospital	: 2 min
Holistic Hospital	: 8 min
Rainbow Children Hospital (Near JNTU)	: 10 min

OFFICES

Aurobindo Pharma	: 3 min
Dr. Reddy's Labs	: 3 min
Coco-Cola	: 5 min
Cyber Towers (HITEC City)	: 25 min
Wipro Circle	: 35 min
Financial District	: 35 min

ENTERTAINMENT

Manjeera Mall	: 15 min
AMB Mall	: 15 min
Forum Mall	: 15 min
Inorbit Mall	: 30 min
IKEA	: 30 min

TRANSPORTATION

Miyapur Bus Depot (Terminal)	: 15 min
Miyapur Metro	: 15 min
ORR	: 5 min

EXCELLENT CONNECTIVITY FOR EVERY CONVENIENCE

Connectivity and convenience are the two important aspects that matter most when it comes to taking a decision for purchasing real estate. With Kowsalya Manidweepam located in Bachupally; life would be easiest than ever imagined. With its proximity to the Education Hub, IT Hub, Financial District, the choicest of options in education, healthcare, entertainment, supermarkets and a lot of many other options give yourself the gift of convenience.

SANVI'S
KOWSALYA
MANIDWEEPAM

Beauty to live in



SCAN TO LOCATION



Site :

Opp. Bharat Petrol Pump, Nizampet Road,
Bachupally, Hyderabad - 500 090, Telangana State

Cell : 91548 29351, 91548 29352, 91548 29353

Email : sales@sanviinfra.com

www.sanviinfra.com



SCAN TO
WEBSITE

TEAM

Architects



6-3-1111/118, 1st Floor,
Begumpet, Hyderabad - 500016.

Email: krishnan1610@yahoo.com

Design Team:

D. Krishnan - 9246348115

D. Sambasiva Rao - 9484816500

www.neoterrain.in

Structural Engineer



Flat No. 403, Plot No. 782,
Raga Residency, Ayyappa Society,
Madhapur, Hyderabad - 500 081

Email: mansardstructures@gmail.com

MEP Consultants



ESVE Design Solutions Pvt. Ltd.

#495, 'Sanmathi', 9th Main,
11th Cross, ISRO Layout,
Bengaluru - 560 078

www.esvedesign.com