

A PROJECT BY



YOUR DREAM LIFESTYLE BEGINS HERE!



SHAANTHAM MEADOWS

A STEP CLOSER TO NATURE

PREMIUM VILLA PLOTS

545
PLOTS

STARTING FROM
165 SQUARE YARDS

@CHEGUNTA



WE DON'T CONSTRUCT SPACES. WE DESIGN LIFESTYLES.

We design lifestyles around spaces that are enriching and nurturing for you and your family not just today, but for times to come. So, each of our projects closely intertwines the blissfulness of nature, ensuring you the quality of life that you seek.

With this intent and ideology, we bring one more milestone to life, our latest project,

SHAANTHAM MEADOWS

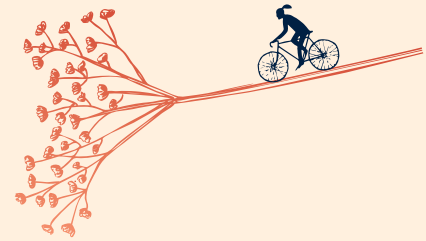
A step closer to nature.



Shantham Meadows is the destination for a peaceful living experience. With immaculate planning, premium amenities, and excellent connectivity, it promises you both, the luxury of an urban lifestyle and the blissfulness of nature, alongside a close-knit community living experience.



BECAUSE... EVERY DETAIL MATTERS!



At **Shaantham Meadows**, every moment is translated into an experience that is worth cherishing. With premium amenities at your beck and call, you can rest assured of a lifestyle that you always dreamt of!

PROJECT HIGHLIGHTS



GRANDEUR
ARCH



BEAUTIFUL
LANDSCAPE



COMPOUND WALL
WITH SOLAR FENCING



CC
ROADS



OPEN
GYM



24X7 SECURITY
WITH CCTV SURVEILLANCE



CYCLING &
JOGGING TRACK



CHILDREN'S
PLAY AREA



AMPHITHEATER





CONNECTED TO CONVENIENCE



Being closer to nature and peace is nowhere taking you away from convenience! Shaantham Meadows is excellently connected to all major routes and destinations, ensuring you live a premium lifestyle at the most accessible & affordable location.

LOCATION HIGHLIGHTS

- Facing Hyderabad- Nagpur Highway (NH44)
- 5 Mins - The Proposed Regional Ring Road (RRR)
- 5 Mins - Proposed Furniture Park (SEZ)
- 20 Mins - Manoharabad MMTS
- 40 Mins - Medchal Town
- 45 Mins - Gateway IT Park, Kandlakoya
- 50 Mins - Outer Ring Road (ORR) Exit-6
- 50 Mins - Proposed AMOLED Displays at Dundigal
- 50 Mins - Proposed 320 Acres IT Park at Dundigal
- 60 Mins - Suchithra Cross Road
- Abhyasa International School
- Neeraj International School
- Geetha School
- Mallareddy Engineering College
- CMR Group of Institutions
- Shiva Shivani Institute of Management
- Toopran Industrial Park
- Near Proposed Food Processing Unit (ITC Investment)
- Bayer Life Sciences
- Jersey Milk
- Asian Paints
- Seeds Development Companies
- Pharma Companies, EMRI (108)
- Tata Coffee Limited





National Highway (NH44)

National Highway (NH44)

National Highway (NH44)

Proposed Regional Ring Road (RRR)

Proposed Regional Ring Road (RRR)

Nehru Outer Ring Rd (ORR)

Nehru Outer Ring Rd (ORR)

46 ACRES

Medak - Chegunta Rd Road

Chegunta

Bayer BioScience Pvt Ltd,

Toopran Industrial Park

Abhyasa International Residential School

Masaipet Railway Station

Manoharabad MMTS

Dandupally Rd

Jersey Milk CDPL Plant

ITC Limited Food Processing Unit

Proposed 320 Acres IT Park at Dundigal

Proposed AMOLED Display Fab Project

Medchal Town

CMR Group of Institutions

Medchal-pudur-Shamirpet Rd

Medchal-pudur-Shamirpet Rd

Gateway IT Park Kandlakoya

Niraj International School

Asian Paints

Malla Reddy Engineering College

Siva Sivani Institute of Management

Geetha School

Medak - Hyderabad Rd

Medak - Hyderabad Rd

Suchitra X Road

Suchitra - Okol Akhal Road

Hyderabad - Ramagundam Rd

Suchitra Road

Hyderabad - Ramagundam Rd







TLP No. 258/2022/H



Reg. No. P01000005338



You may be a landowner,
homeowner, or an investor,
we promise you a property
that holds value in both,
money and heart.

A PROJECT BY



Jains Friends Square, Unit No. 309, 3rd Floor,
Suchitra Circle, Beside Suchitra Academy, 500067

ithikagroup@gmail.com

www.ithikagroup.com

Follow us on



*All the payments to be strictly processed in the name of Ithika Developers LLP at the above mentioned address. *T&C apply

Note: The brochure is only a conceptual presentation. Developers reserve the right to change or alter the plan time to time, as deemed fit.