



SUBISHI'S POLAM LUXURY APARTMENTS

Near Suchitra Jn.

WWW.SUBISHI.COM

POLAM LUXURY APARTMENTS



subishi's
POLAM
LUXURY APARTMENTS

- * 10 Floors
- * 3.6 Acre Layout
- * 210 Luxury Flats
- * 3BHK & 4BHK
- * 1,780 - 3,400 SFT

SUBISHI POLAM

TS RERA REGISTRATION NO.: P02200003114



NA
ARCHITECTS

WEST

M/S SUBISHI POLAM





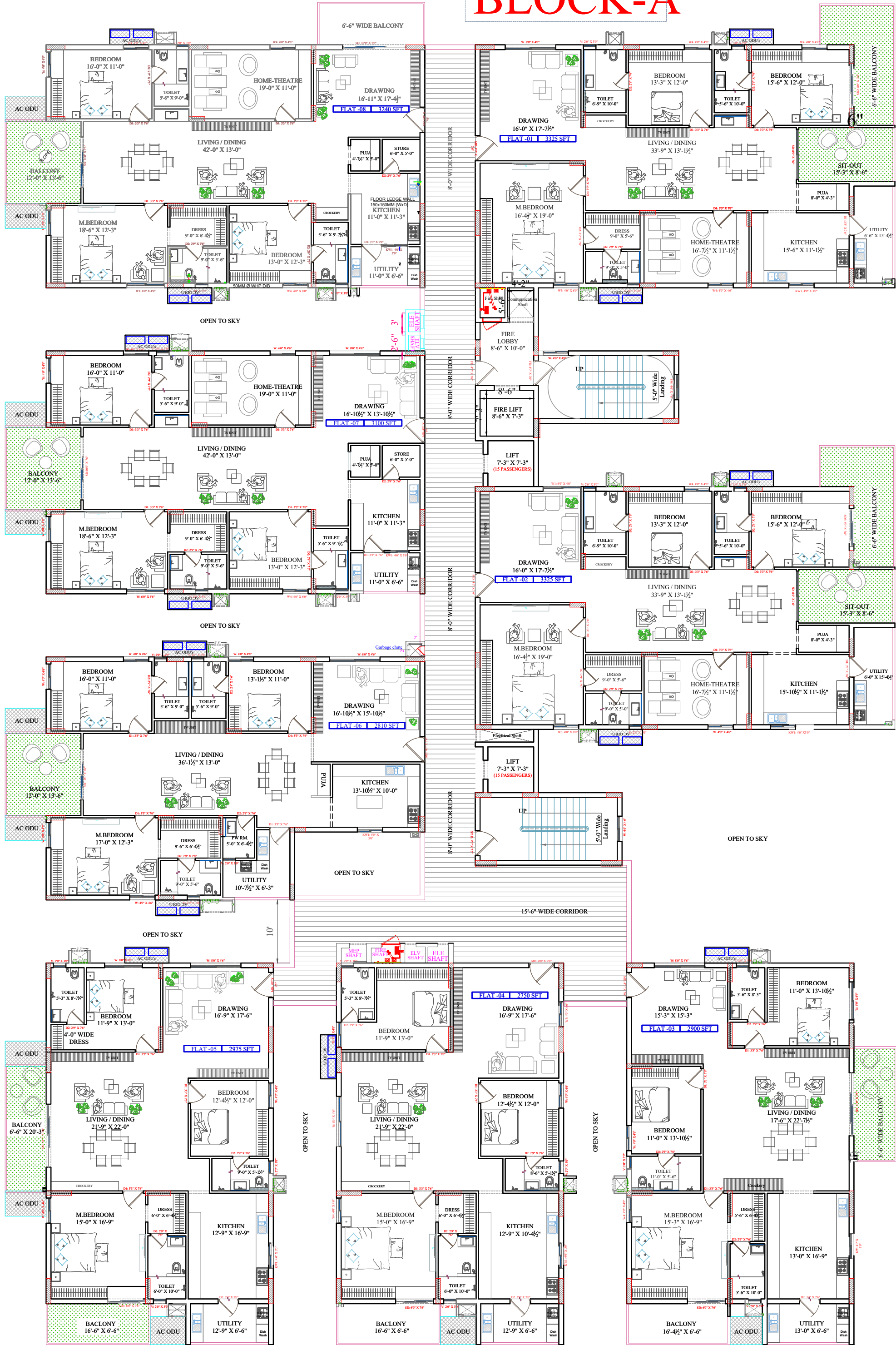


MASTER LAYOUT

- 1. Open Amphitheatre
- 2. Zen & Reflexology Garden
- 3. Kids Play Area
- 4. Yoga Deck
- 5. Open GYM
- 6. Volley Ball court
- 7. Bench Seating
- 8. Cricket Net
- 9. Seating
- 10. Park
- 11. Pergola
- 12. Seating Park
- 13. Basket Ball Post



BLOCK-A





West Facing
3325 SFT
Flat No. :-1,2



15'6" WIDE
CORRIDOR

West Facing
2900 SFT
Flat No. :-3



North Facing
2750 SFT
Flat No. :-4





Flat no - 5
East Facing
3BHK 2975 SFT



East Facing
2810 SFT
Flat No. :-6



East Facing
3100 SFT
Flat No. :-7

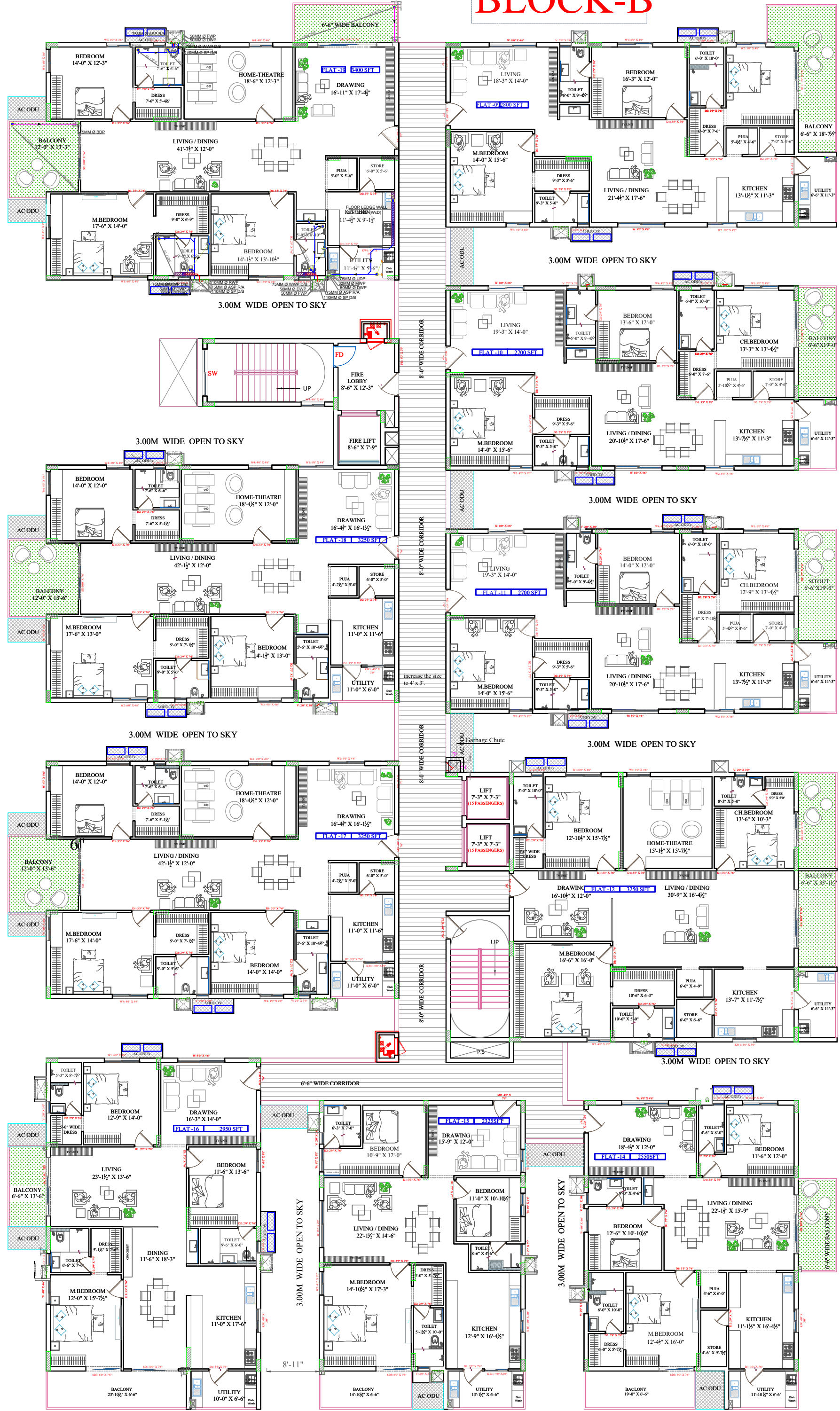




East Facing
3240 SFT
Flat No. :-8



BLOCK-B

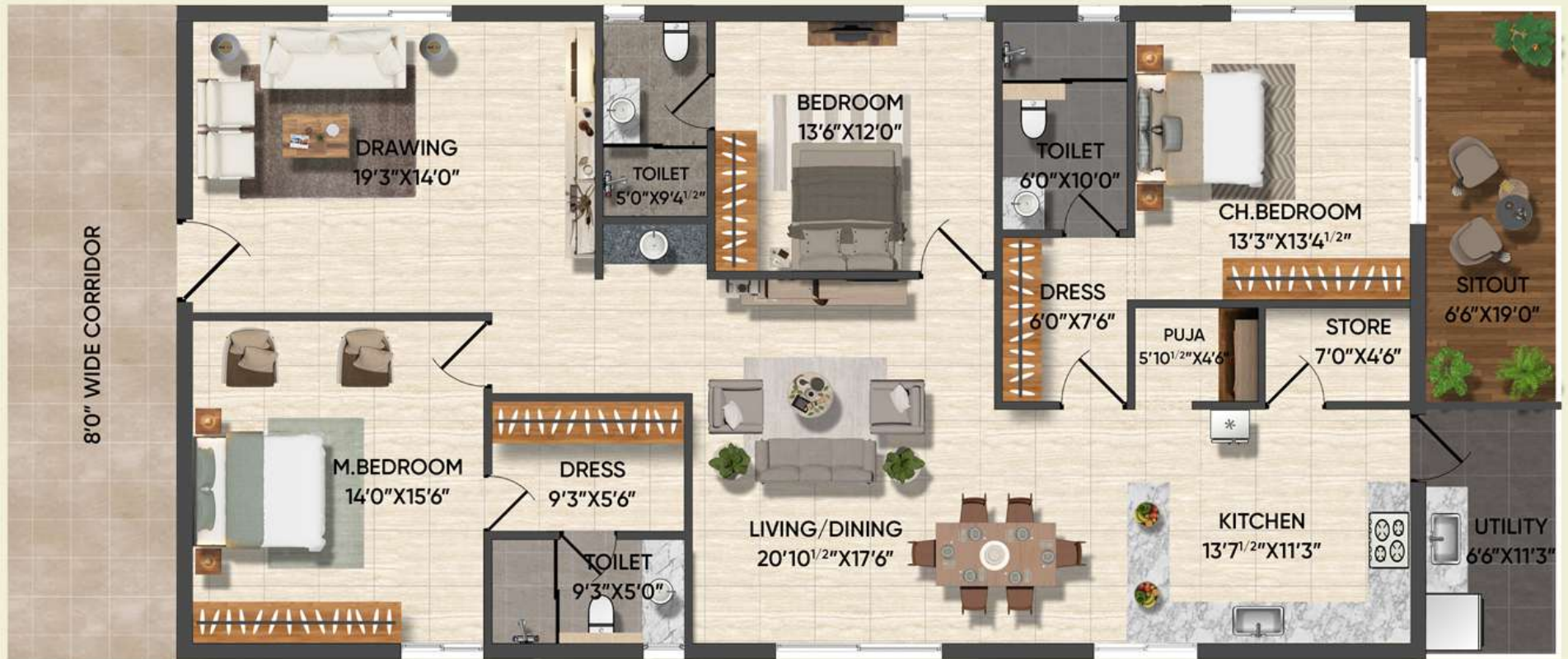




West Facing
2800 SFT
Flat No. :-9



West Facing
2700 SFT
Flat No. :-10 ,11



West Facing
3250 SFT
Flat No. :-12



West Facing
2550 SFT
Flat No. :-14



North Facing
2325 SFT
Flat No. :-15



East Facing
2950 SFT
Flat No. :-16



East Facing
3250 SFT
Flat No. :-17 ,18

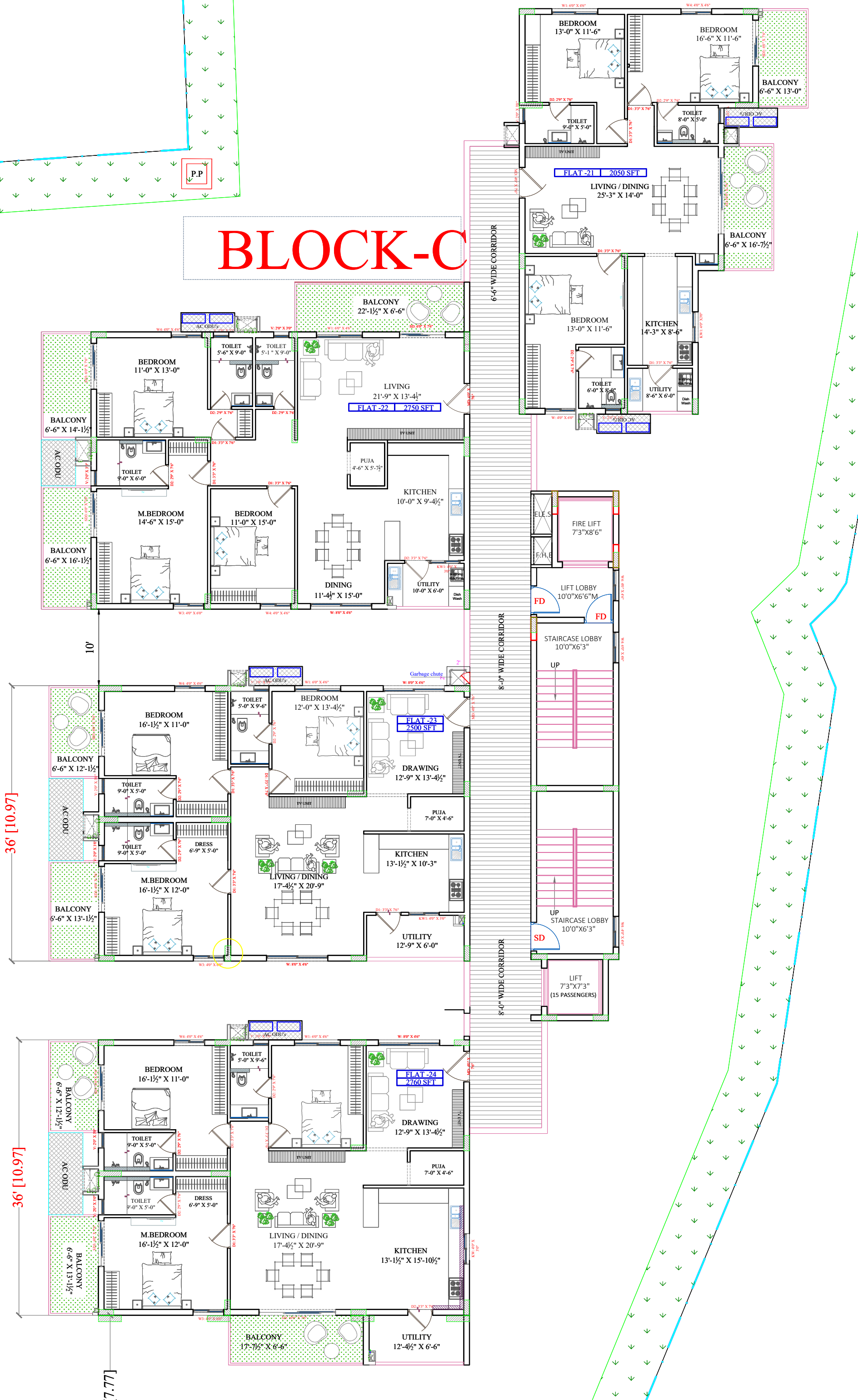




East Facing
3400 SFT
Flat No. :-19



BLOCK-C



West Facing
2050 SFT
Flat No. :-21



East Facing
2750 SFT
Flat No. :-22



East Facing
2500 SFT
Flat No. :-23



East Facing
2760 SFT
Flat No. :-24

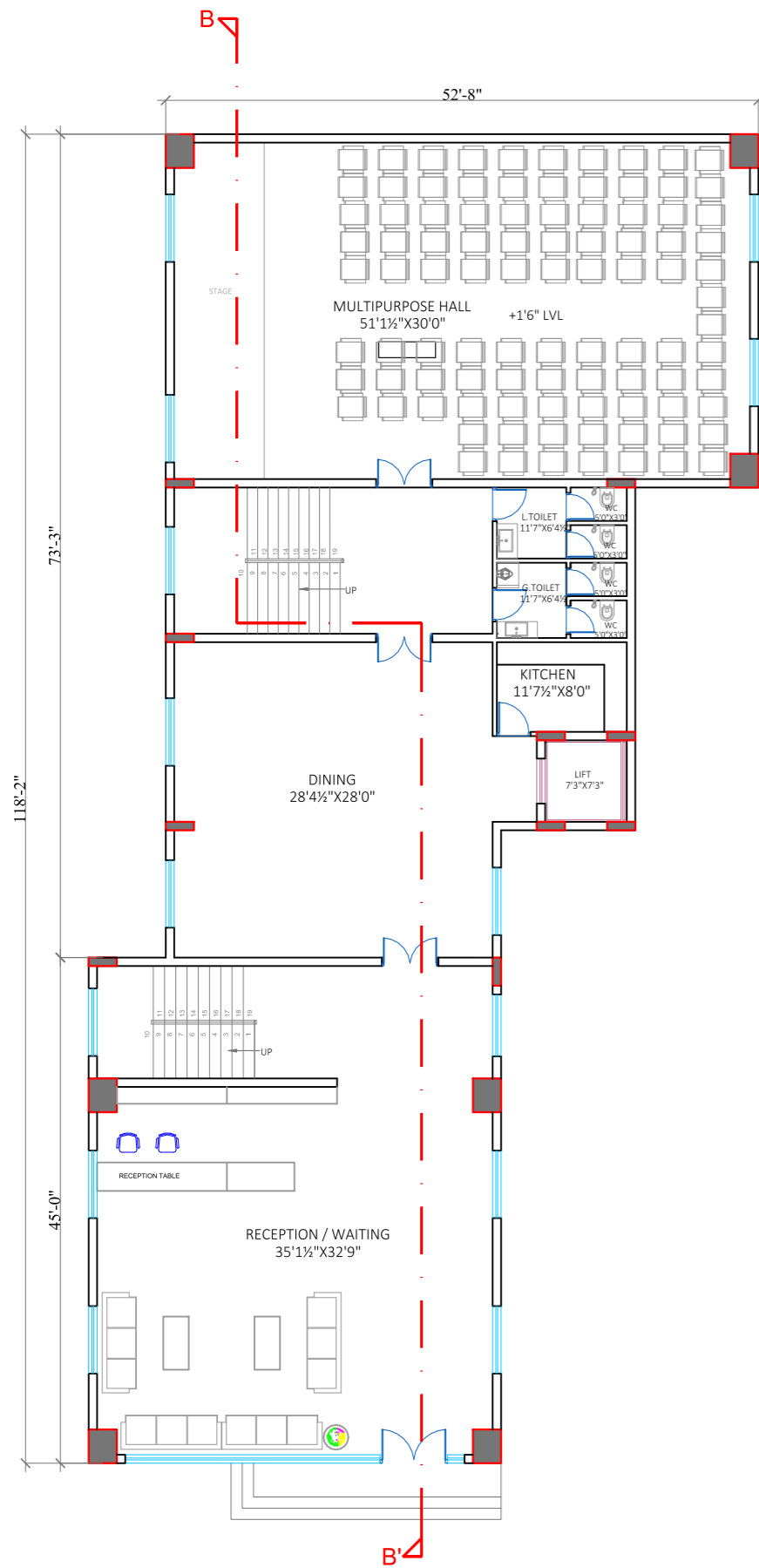


NA
ARCHITECTS

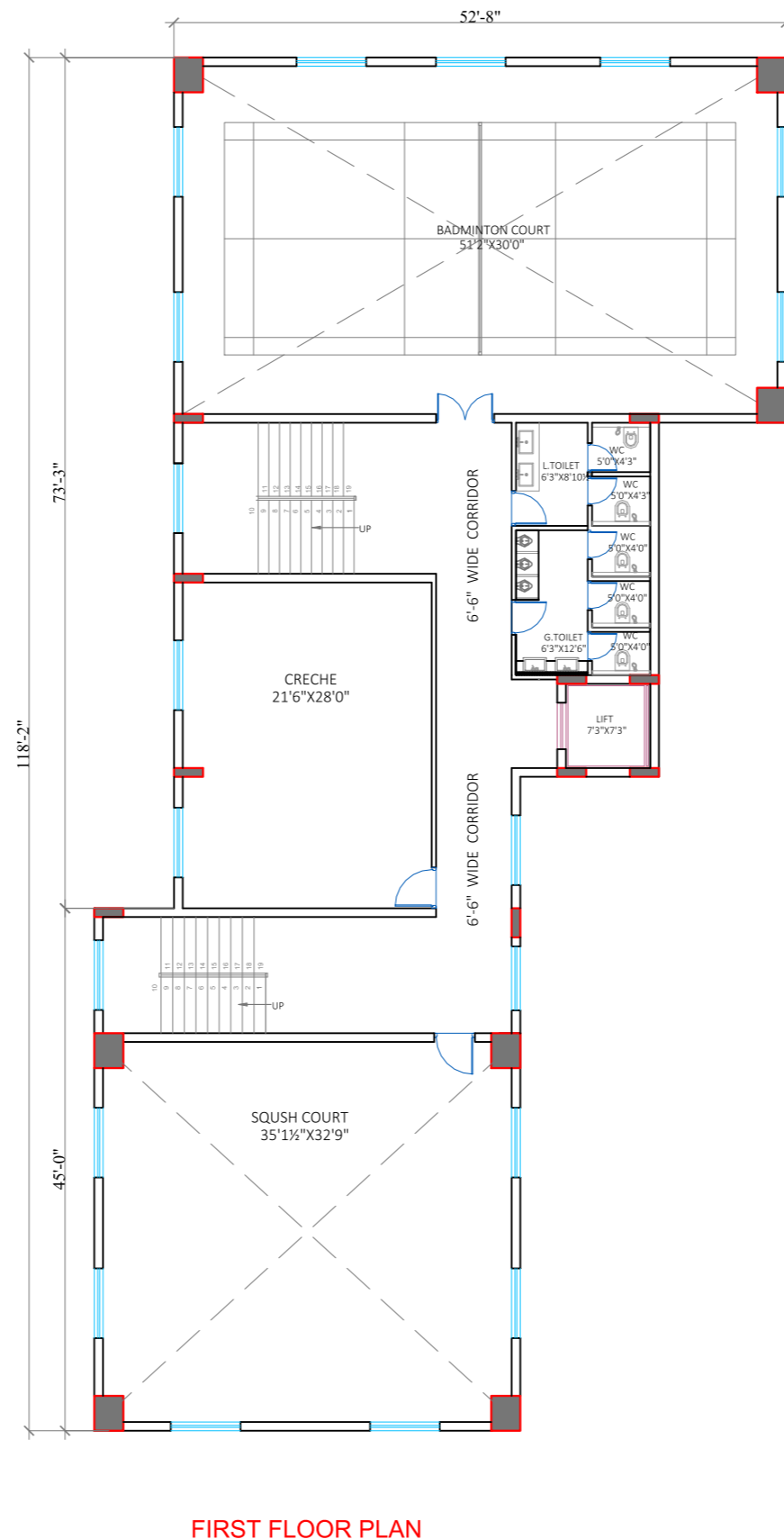
M/S SUBISHI POLAM



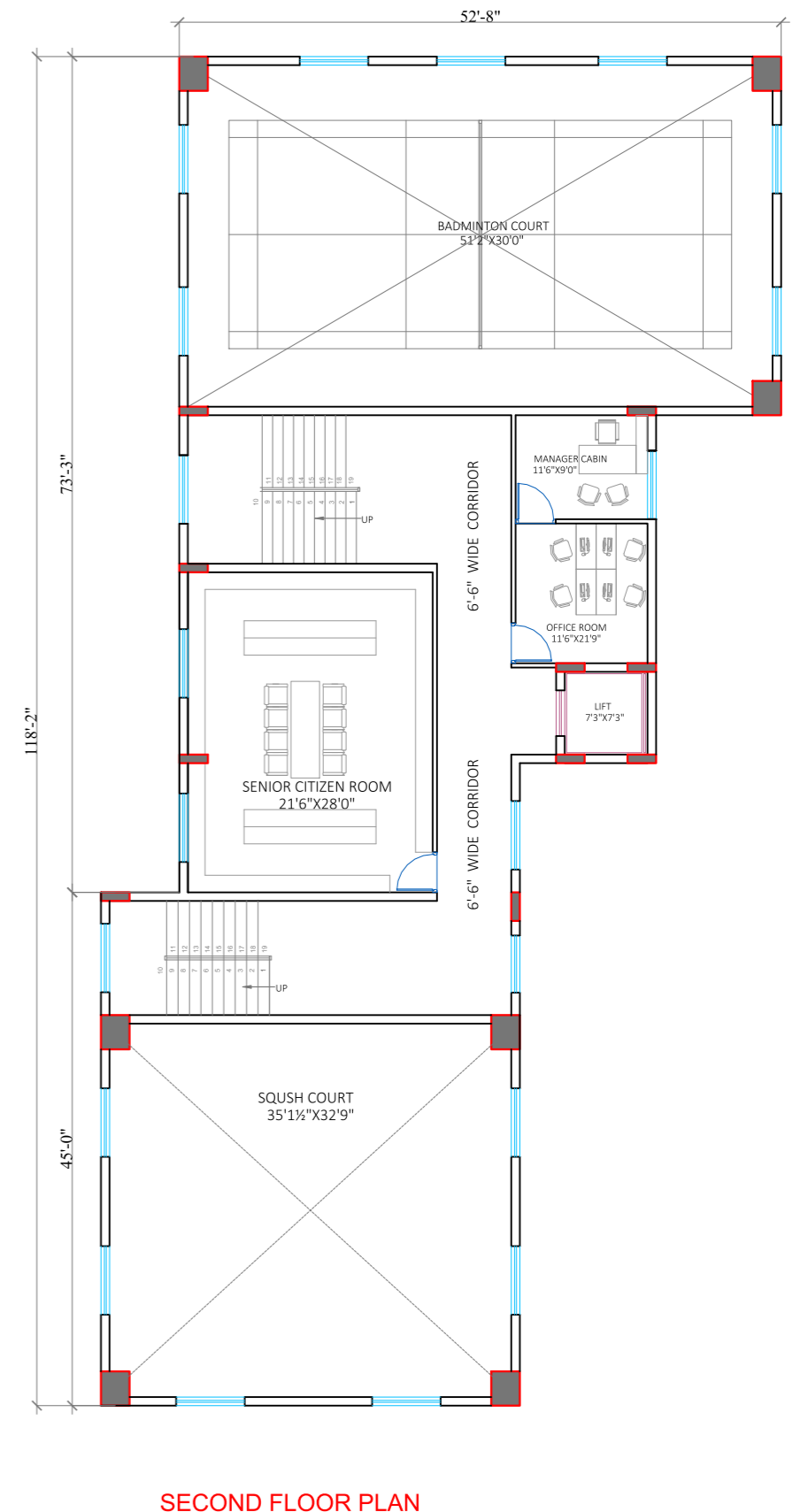




GROUND FLOOR PLAN



FIRST FLOOR PLAN



SECOND FLOOR PLAN

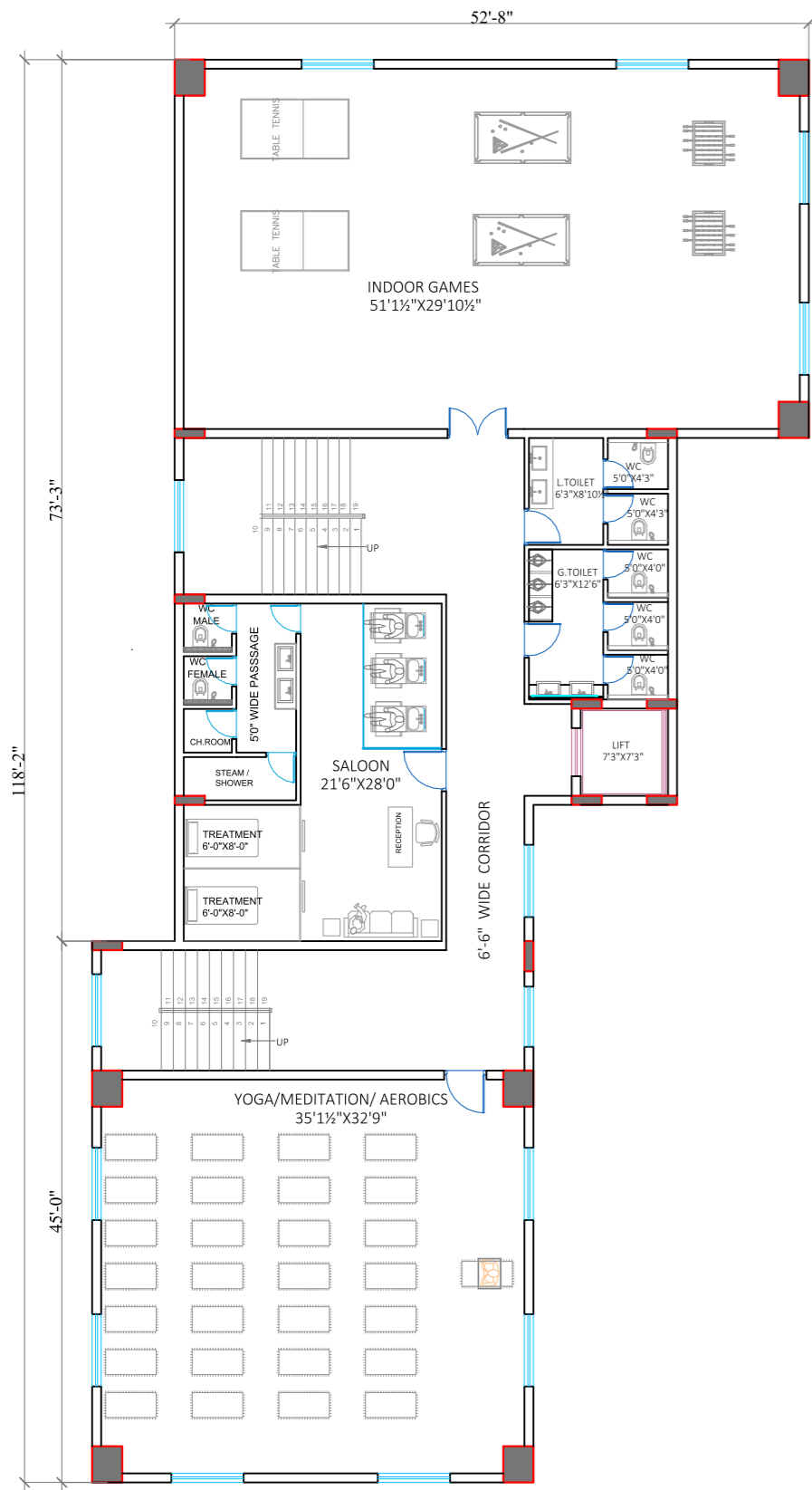


NA ARCHITECTS
 Plot No.319/320, 6th floor, East Avenue,
 Ayyappa Society, Madhapur, Hyderabad: 500081.
 Tel : 040 23116454, 040-48526454, 040-48556454

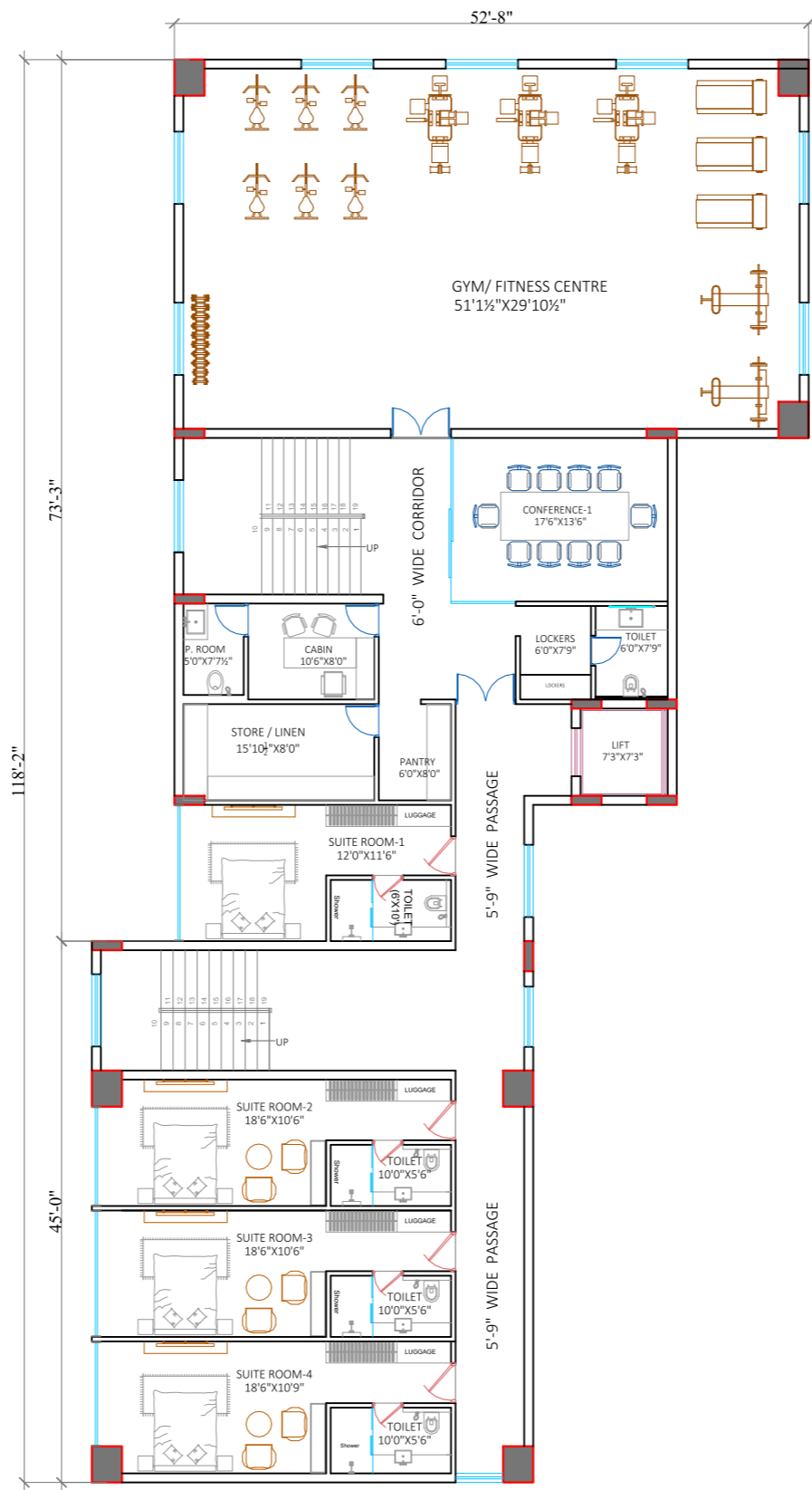
PROPOSED APPARTMENTS FOR SUBISHI ENGINEERS

CLUBHOUSE FLOOR PLANS

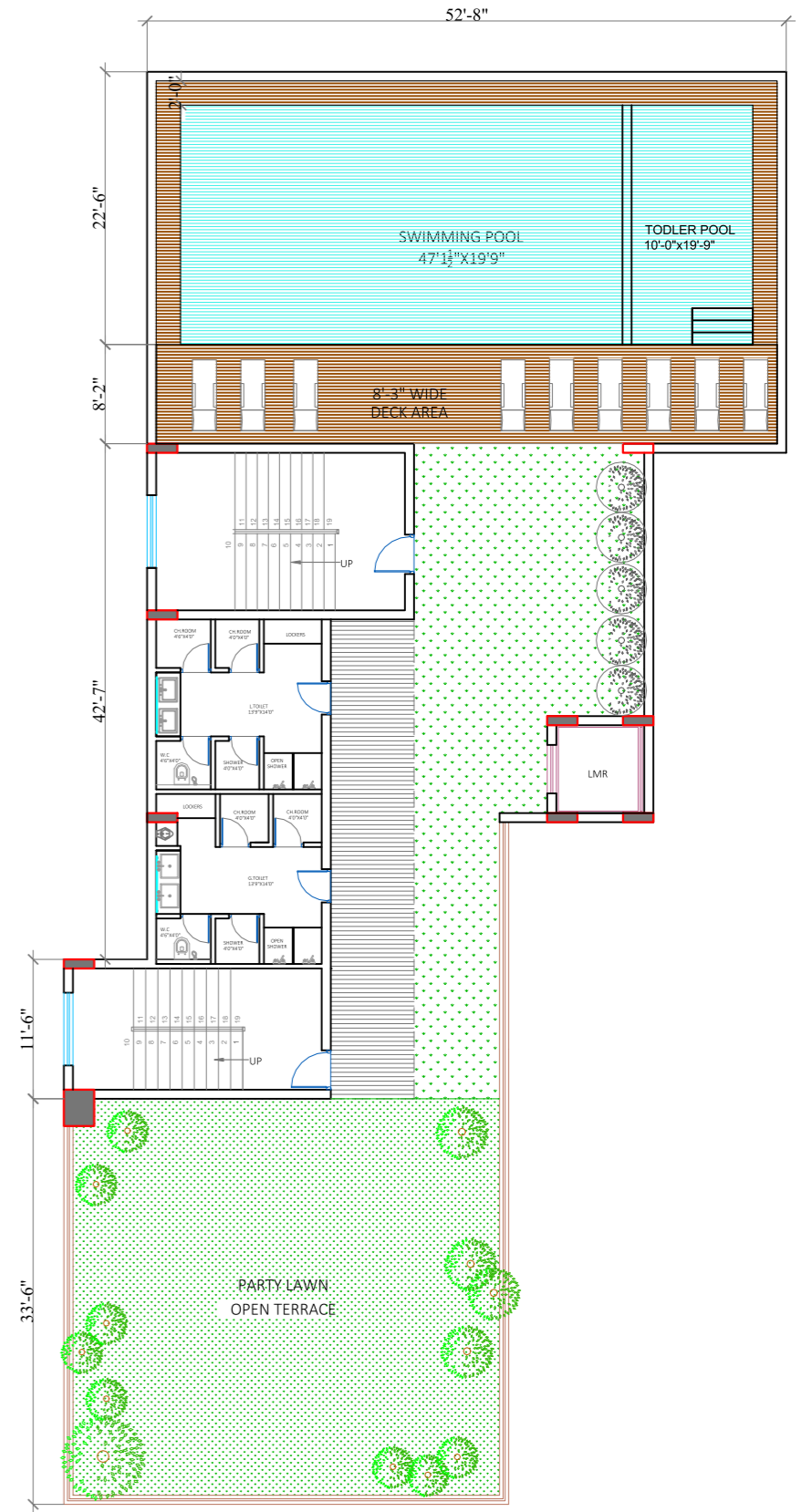
STAGE:
CONCEPT DESIGN
 DATE:
 29-08-2020



THIRD FLOOR PLAN



FOURTH FLOOR PLAN



TERRACE FLOOR PLAN

SUBISHI'S POLAM LUXURY APARTMENTS

