



SRIVALLI PRAVAS



Another Landmark From Undavalli Constructions
Kaza Toll Plaza, Vijayawada - Guntur Highway, Amaravati

SRIVALLI PRAVAS



* Artistic impression

PROJECT AT A GLANCE



8.6 Acres Gated Community



8 Towers (Cellar+Stilt) Parking
+ 9 Residential Floor



668 Signature Style Apartments



50% Open Space



2, 3, 4 & 4BHK Duplex Apartments

100

100% Vasthu



No Common Walls



Rainwater Harvesting



Swimming Pool



Sewage & Water Treatment Plants



Fire Protection System



38,000 Sq.Ft. Clubhouse



* Artistic impression



* Artistic impression

PROJECT SPECIFICATIONS

SUPER STRUCTURE:

RCC Framed structure to withstand wind and seismic loads.

WALLS: CC Block walls.

PAINTING:

Internal: Smooth finish with Wallcare and Emulsion paint of reputed brand.

External: Texture Finish of exterior Emulsion paint of reputed brands with Architectural features.

FLOORING:

DRAWING / DINING / LIVING:

800 x 800 mm size double charged Vitrified tiles of reputed brand.

BEDROOMS / KITCHEN:

600 x 600 mm size double charged Vitrified tiles of reputed brand.

BALCONY / BATHROOMS / UTILITY:

Anti-skid vitrified / Ceramic tiles.

CORRIDORS FLOORING:

1200 x 600 mm size double charged Vitrified tiles of reputed brand.

DOORS:

MAIN DOORS: Teak Wood frame and Shutter and reputed make hardware.

INTERNAL DOORS: Teak Wood frame with Laminate Flush Shutter and reputed make hardware.

BATHROOMS / UTILITY: WPC frame with WPC texture Shutters.

BALCONIES: Teak Wood frame with Laminate Flush Shutter and reputed make hardware.

ALL BATH ROOMS :

EWC with Flush valve of reputed brand.

Single lever Bath and shower mixer.

Provision for geysers in all bathrooms.

All faucets are chrome plated of reputed brands.

KITCHEN : Granite platform with single bowl stainless steel sink.

WINDOWS : All windows are of reputed make UPVC sliding shutters with mesh and necessary hardware.

SECURITY : Comprehensive security system with cameras in appropriate locations.

POWER BACK UP : Metered DG Backup will be provided for each flat, except A.C's & Geysers



WATER PROOFING :

Water proofing will be provided for all bathrooms, balconies, utility area & roof terrace

ELECTRICAL :

- Concealed copper wiring of reputed make.
- Power outlet for Air Conditioners in all Bed rooms and living.
- Power outlets for Geysers in all Bathrooms.
- Power outlets in Kitchen for Appliances.
- Washing machine Point in utility area.
- Three phase supply for each unit and individual prepaid meters.
- Miniature circuit breakers (MCB) for each distribution board of reputed make.
- Modular Switches of reputed make.

TV/TELEPHONE :

- Provision for internet connection & DTH.
- Provision for Telephone points.
- Provision for TV points.

LIFTS :

- 8 & 13 Passengers lift of Reputed make.
- Lift lobby cladding with vitrified tiles.

FIRE SAFETY :

- Fire hydrant in all floors and parking floors.
- Fire alarm and Public addressing system in all floors and common areas .
- Fire sprinkler system in basements..

WTP & STP :

- Water treatment plant for Bore-well water
- A Sewage Treatment plant of adequate capacity as per norms will be provided inside the project.
- Treated sewage water will be used for the landscaping and flushing purpose.





Project funded by **SWAMIH Investment Fund-I (A-F Block)**
 Managed by **SBI Ventures Limited** (Formerly known as **SBICAP Ventures Limited**)
 Sponsored by **Government of India**

☎ +91 9440 34 8888, 88 99 11 8888
 ✉ Info@ucpl.io
 🌐 www.undavalliconstructions.com

Site Address:
 Kaza Toll Plaza, NH-5,
 Vijayawada - Guntur Highway,
 Amaravati, A.P. - 522 503.

Corporate Office:
 UNDAVALLI CONSTRUCTIONS PVT. LTD.
 4th Floor, Upstairs Andhra Bank
 and IOCL Offices, Road No. 2,
 Guru Nanak Road, Vijayawada,
 A.P., India - 520 008.

Registered Office:
 H.No.: 25A-10-4/1, Undavalli Residency,
 Ashok Nagar, Eluru, A.P. - 534 002.

Architects & Landscape Architects
DesignSpace
 Architects & Landscape Architects
 H.No.: 8-2-684/3/15, Bhavani Nagar, Road No. 12,
 Banjara Hills, Hyderabad. T.S. - 500 034. Ph: +91 99483 35353
 E-Mail: designspaceaid@gmail.com, Web: www.designspace.in

Structural Consultants
Dr. V. Anjaneya Prasad
 M.Tech. (Struct.) (IITM), Ph.D., F.I.E.
 Vasantha Emerald Gardens, Behind Hotel Jinger Court,
 Madhapur, Hyderabad, T.S. - 500 081.

MEP Consultants
ESVE Design Solutions Pvt. Ltd.
 495, Sanmathi, 9th Main, 11th Cross, ISRO Layout,
 Bangalore - 560 078.
 Telefax: 080-26664152 / 95
 Email: esvedesigns@gmail.com,
 Web: www.esvedesign.com



**SRIVALLI
 PRAVAS**

Note: The information and visuals contained herein are artistic impressions and are meant to be indicative, and are subjects to change as may be required by the authorities, architects and cannot form an offer or contract, while every reasonable care has been taken in providing the information, the promoters Undavalli Constructions Pvt. Ltd. or their agents cannot be held responsible for any inaccuracies. The Promoters reserve their rights to make alternations, additions and amendments as may be necessitated from time to time. Specifications and Materials mentioned here are subject to availability.



SRIVALLI
PRAVAS

Your Heaven on Earth



FLOOR PLANS

another prestigious venture from



UNDAVALLI
CONSTRUCTIONS



TYPICAL FLOOR PLAN - BLOCK A (DHRUVA)

01	02	03	04	05
06	07	08	09	10



TYPICAL FLOOR PLAN - BLOCK B (SOMA)

11	12	13	14	15
16	17	18	19	20



TYPICAL FLOOR PLAN - BLOCK C (DHARA)

- | | | | |
|--|--|--|--|
| 101A, 101B, 101C
CA. 1000 SQ. FT.
B. 2000 / EAST | 102A, 102B, 102C
CA. 1000 SQ. FT.
B. 2000 / WEST | 103A, 103B, 103C
CA. 1000 SQ. FT.
B. 2000 / WEST | 104A, 104B, 104C
CA. 1000 SQ. FT.
B. 2000 / WEST |
| 105A, 105B, 105C
CA. 1000 SQ. FT.
B. 2000 / WEST | 106A, 106B, 106C
CA. 1000 SQ. FT.
B. 2000 / EAST | 107A, 107B, 107C
CA. 1000 SQ. FT.
B. 2000 / EAST | 108A, 108B, 108C
CA. 1000 SQ. FT.
B. 2000 / EAST |



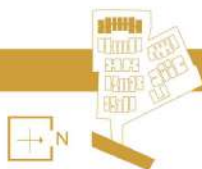
TYPICAL FLOOR PLAN - BLOCK D (ANILA)

- | | | | | | | | |
|--|--|--|--|--|--|--|--|
| 101A, 101B, 101C
CA. 1000 SQ. FT.
B. 2000 / EAST | 102A, 102B, 102C
CA. 1000 SQ. FT.
B. 2000 / WEST | 103A, 103B, 103C
CA. 1000 SQ. FT.
B. 2000 / WEST | 104A, 104B, 104C
CA. 1000 SQ. FT.
B. 2000 / WEST | 105A, 105B, 105C
CA. 1000 SQ. FT.
B. 2000 / WEST | 106A, 106B, 106C
CA. 1000 SQ. FT.
B. 2000 / WEST | 107A, 107B, 107C
CA. 1000 SQ. FT.
B. 2000 / WEST | 108A, 108B, 108C
CA. 1000 SQ. FT.
B. 2000 / WEST |
| 109A, 109B, 109C
CA. 1000 SQ. FT.
B. 2000 / EAST | 110A, 110B, 110C
CA. 1000 SQ. FT.
B. 2000 / EAST | 111A, 111B, 111C
CA. 1000 SQ. FT.
B. 2000 / EAST | 112A, 112B, 112C
CA. 1000 SQ. FT.
B. 2000 / EAST | 113A, 113B, 113C
CA. 1000 SQ. FT.
B. 2000 / EAST | 114A, 114B, 114C
CA. 1000 SQ. FT.
B. 2000 / EAST | 115A, 115B, 115C
CA. 1000 SQ. FT.
B. 2000 / EAST | 116A, 116B, 116C
CA. 1000 SQ. FT.
B. 2000 / EAST |



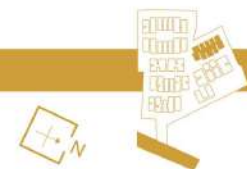
TYPICAL FLOOR PLAN - BLOCK E (ANALA)

<p>1. SRA-2070/31T CA-1270/31T R-128/31T 3.00K/2.60K</p>	<p>2. SRA-1318/31T CA-1218/31T R-128/31T 3.00K/2.60K</p>	<p>3. SRA-1319/31T CA-1219/31T R-128/31T 3.00K/2.60K</p>	<p>4. SRA-1320/31T CA-1220/31T R-128/31T 3.00K/2.60K</p>	<p>5. SRA-1321/31T CA-1221/31T R-128/31T 3.00K/2.60K</p>	<p>6. SRA-1322/31T CA-1222/31T R-128/31T 3.00K/2.60K</p>	<p>7. SRA-1323/31T CA-1223/31T R-128/31T 3.00K/2.60K</p>	<p>8. SRA-1324/31T CA-1224/31T R-128/31T 3.00K/2.60K</p>	<p>9. SRA-1325/31T CA-1225/31T R-128/31T 3.00K/2.60K</p>	<p>10. SRA-1326/31T CA-1226/31T R-128/31T 3.00K/2.60K</p>	<p>11. SRA-1327/31T CA-1227/31T R-128/31T 3.00K/2.60K</p>	<p>12. SRA-1328/31T CA-1228/31T R-128/31T 3.00K/2.60K</p>	<p>13. SRA-1329/31T CA-1229/31T R-128/31T 3.00K/2.60K</p>	<p>14. SRA-1330/31T CA-1230/31T R-128/31T 3.00K/2.60K</p>
--	--	--	--	--	--	--	--	--	---	---	---	---	---



TYPICAL FLOOR PLAN - BLOCK F (PRATYUSHA)

<p>1. SRA-2183/31T CA-1183/31T R-128/31T 3.00K/2.60K</p>	<p>2. SRA-2184/31T CA-1184/31T R-128/31T 3.00K/2.60K</p>	<p>3. SRA-2185/31T CA-1185/31T R-128/31T 3.00K/2.60K</p>	<p>4. SRA-2186/31T CA-1186/31T R-128/31T 3.00K/2.60K</p>	<p>5. SRA-2187/31T CA-1187/31T R-128/31T 3.00K/2.60K</p>	<p>6. SRA-2188/31T CA-1188/31T R-128/31T 3.00K/2.60K</p>	<p>7. SRA-2189/31T CA-1189/31T R-128/31T 3.00K/2.60K</p>	<p>8. SRA-2190/31T CA-1190/31T R-128/31T 3.00K/2.60K</p>	<p>9. SRA-2191/31T CA-1191/31T R-128/31T 3.00K/2.60K</p>	<p>10. SRA-2192/31T CA-1192/31T R-128/31T 3.00K/2.60K</p>	<p>11. SRA-2193/31T CA-1193/31T R-128/31T 3.00K/2.60K</p>	<p>12. SRA-2194/31T CA-1194/31T R-128/31T 3.00K/2.60K</p>	<p>13. SRA-2195/31T CA-1195/31T R-128/31T 3.00K/2.60K</p>	<p>14. SRA-2196/31T CA-1196/31T R-128/31T 3.00K/2.60K</p>
--	--	--	--	--	--	--	--	--	---	---	---	---	---



All details shown in this information are not included in this brochure and are subject to change at any time and to the final construction drawings. All rights reserved by the developer and its agents.

FIRST FLOOR PLAN - BLOCK G (PRABHAS)

- | | | | |
|---|---|---|---|
| <p>10A 1202/01
CA 2423 SQ FT
B 79 SQ FT
4 BHK / 2BATH</p> | <p>10A 1202/02
CA 2423 SQ FT
B 79 SQ FT
4 BHK / 2BATH</p> | <p>10A 1203/01
CA 2423 SQ FT
B 79 SQ FT
4 BHK / 2BATH</p> | <p>10A 1203/02
CA 2423 SQ FT
B 79 SQ FT
4 BHK / 2BATH</p> |
| <p>10A 1204/01
CA 2423 SQ FT
B 79 SQ FT
4 BHK / 2BATH</p> | <p>10A 1204/02
CA 2423 SQ FT
B 79 SQ FT
4 BHK / 2BATH</p> | <p>10A 1205/01
CA 2423 SQ FT
B 79 SQ FT
4 BHK / 2BATH</p> | <p>10A 1205/02
CA 2423 SQ FT
B 79 SQ FT
4 BHK / 2BATH</p> |



EVEN FLOOR PLAN - BLOCK G (PRABHAS)

- | | | | |
|---|---|---|---|
| <p>10A 1206/01
CA 2423 SQ FT
B 79 SQ FT
4 BHK / 2BATH</p> | <p>10A 1206/02
CA 2423 SQ FT
B 79 SQ FT
4 BHK / 2BATH</p> | <p>10A 1207/01
CA 2423 SQ FT
B 79 SQ FT
4 BHK / 2BATH</p> | <p>10A 1207/02
CA 2423 SQ FT
B 79 SQ FT
4 BHK / 2BATH</p> |
| <p>10A 1208/01
CA 2423 SQ FT
B 79 SQ FT
4 BHK / 2BATH</p> | <p>10A 1208/02
CA 2423 SQ FT
B 79 SQ FT
4 BHK / 2BATH</p> | <p>10A 1209/01
CA 2423 SQ FT
B 79 SQ FT
4 BHK / 2BATH</p> | <p>10A 1209/02
CA 2423 SQ FT
B 79 SQ FT
4 BHK / 2BATH</p> |



©2011 SIA SUPERBUILT UP AREA / CA: CAFFREY PISA / B: BAZZONI

ODD FLOOR PLAN - BLOCK G (PRABHAS)

- 101** 18A-1816 SQ. FT.
CA. 1800 SQ. FT.
B. 306 / SQ. FT.
4 BHK / EAST
- 102** 18A-1816 SQ. FT.
CA. 1800 SQ. FT.
B. 306 / SQ. FT.
4 BHK / WEST
- 103** 18A-1816 SQ. FT.
CA. 1800 SQ. FT.
B. 306 / SQ. FT.
4 BHK / WEST
- 104** 18A-1816 SQ. FT.
CA. 1800 SQ. FT.
B. 306 / SQ. FT.
4 BHK / EAST
- 105** 18A-1816 SQ. FT.
CA. 1800 SQ. FT.
B. 306 / SQ. FT.
4 BHK / WEST
- 106** 18A-1816 SQ. FT.
CA. 1800 SQ. FT.
B. 306 / SQ. FT.
4 BHK / EAST
- 107** 18A-1816 SQ. FT.
CA. 1800 SQ. FT.
B. 306 / SQ. FT.
4 BHK / WEST
- 108** 18A-1816 SQ. FT.
CA. 1800 SQ. FT.
B. 306 / SQ. FT.
4 BHK / EAST



TYPICAL FLOOR PLAN - BLOCK H (APA)

- 101** 300A-300B SQ. FT.
CA. 2700 SQ. FT.
B. 900 / SQ. FT.
4 BHK / NORTH
- 102** 300A-300B SQ. FT.
CA. 2700 SQ. FT.
B. 900 / SQ. FT.
4 BHK / SOUTH



All projects shown in this advertisement are subject to change without prior notice. Information, data and details included in this brochure are for informational purposes only and do not constitute an offer. The floor plan is a schematic diagram and is not intended to be used as a legal document. All dimensions are approximate and subject to change without prior notice. All rights reserved.