



LIFE AT ITS BEST
**WORK, SHOP, DINE,
 PLAY and LIVE**

Nestled amid acres of resplendent greenery, Vertex District, blends seamlessly into the natural topography. With its innovative design and planning, get ready for a futuristic life combining it with the best of amenities.

Vertex District is an integrated project in every aspect. It is a world by itself. Wide Roads, Parks, Open Green Areas, Pavements, LED Street Lighting, and many more that you need are inside the project.

Even as an investment that is buzzing with connectivity and will eventually reap returns over and above the capital invested.

LOCATION

Situated in Tukkuguda, a flourishing locale adjacent to Hyderabad RGI Airport and about 25 minutes stress-free drive from Financial District and the IT hub of Gachibowli

EDUCATION HUB - 9 min drive
 + Aghakhan Academy
 + Sri Sri Ravi Shankar Academy
 + Delhi Public School

SPORTS HUB - 4 min drive
 + Decathlon
 + Golf
 + Cricket

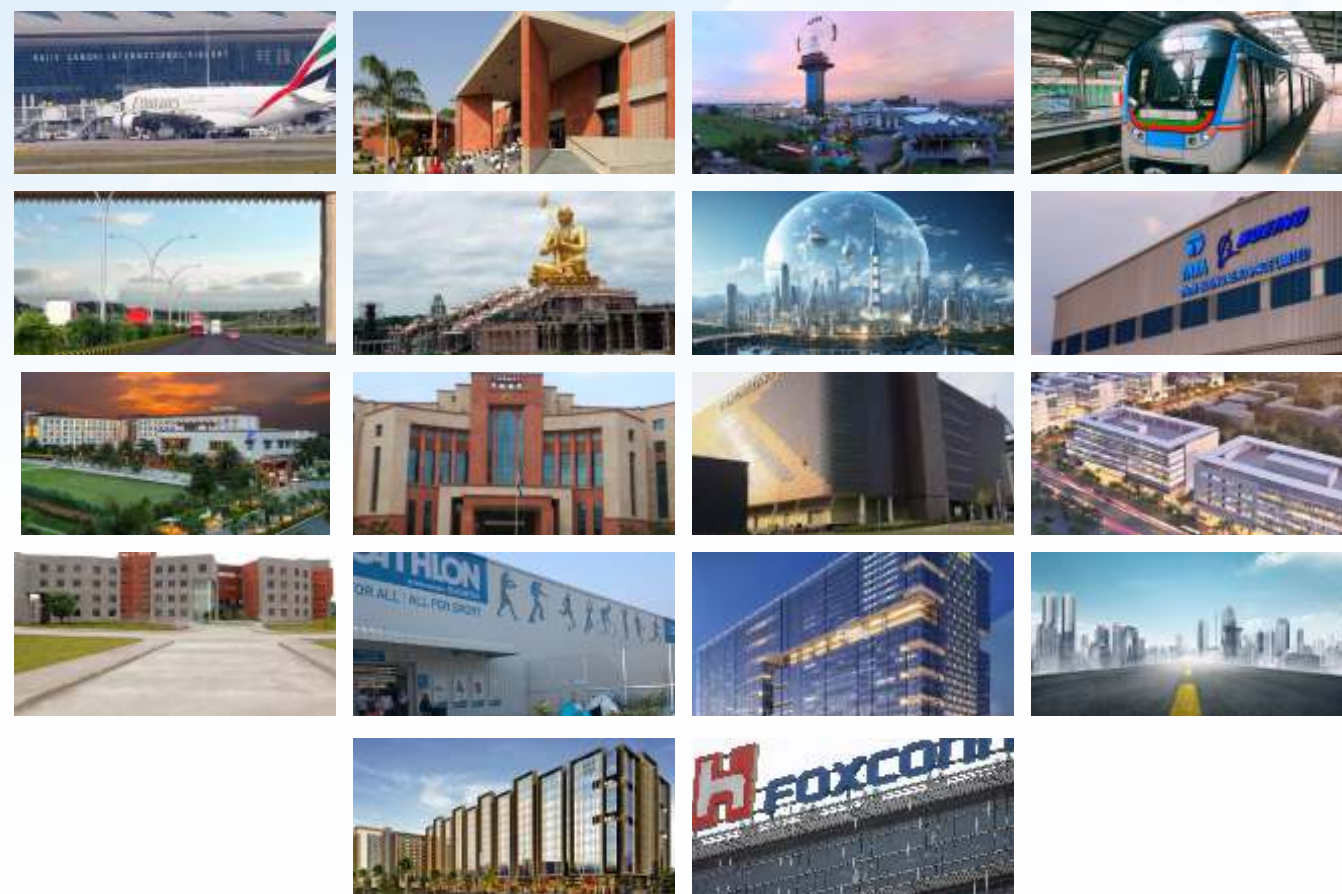
RECREATION HUB - 4 min drive
 + Novotel Hotel
 + Entertainment Zone
 + Shopping Plazas

CORPORATE HUB - 10 min drive
 + Aero City
 + Amazon Data centre
 + Adibatla TCS
 + World Trade Centre

UPCOMING - 10 min drive
 + High Court
 + Metro Station

CLOSE TO AI FOURTH CITY

GROWTH CORRIDOR, NEAR TUKKUGUDA, HYDERABAD



**VERTEX
 DISTRICT**

EXCLUSIVE VILLA PLOTS COMMUNITY AT TUKKUGUDA



**FUTURE IS HERE.
 OWN IT!**

**Inside ORR, Just 5 min drive
 from Tukkuguda Exit 14**

RERA:
 P02400008942



Vertex Corporate, Plot No. 8 & 9,
 Jubilee Enclave, Hitech City, Hyderabad,
 Telangana 500081

RERA:
 P02400008942

NOTE: This brochure is a conceptual presentation and not a legal offering. The promoters reserve the right to make changes in elevation, specifications and plans as deemed fit.

JUST 750 MTS FROM SRISAILAM HIGHWAY | 150, 100 & 40 FEET WIDE INTERNAL ROADS | INSIDE ORR | NEAR TUKKUGUDA EXIT 14

VERTEX DISTRICT

EXCLUSIVE VILLA PLOTS COMMUNITY AT TUKKUGUDA

150' ROAD



TELANGANA CONTRACTORS GOLF CLUB
MEMBERSHIP FEE APPLICABLE

* Terms & Conditions apply

- | INFRASTRUCTURE: | TOWNSHIP FEATURES: |
|--|---|
| <ul style="list-style-type: none"> + Wide Roads <ul style="list-style-type: none"> > 150', 100' & 80' Master Plan Layout BT Road with paved walk-ways on either side of the road > Plotted Area Internal Roads: 40' BT Roads with paved walk-ways on either side of the road + Concealed Underground Cabling <ul style="list-style-type: none"> > Storm Water Drain, Cable Trench for Ht & LT, Water Supply Lines, Waste Water Lines | <ul style="list-style-type: none"> + HMDA/RERA Approved + Vaastu Compliant Township + Beautifully Maintained Gardens + Electrical Substation + Planned Drainage System + Sewage Treatment Plant + Rain Water Harvesting + Avenue Plantation + Designer LED Street Lights |

AMENITIES THAT ALLURE YOU



- + Kids Play Area
- + Seating Spaces
- + Beautiful Parks
- + Walkway
- + Box Cricket/Futsal Court
- + Half Basketball Court / Pickle Ball
- + Recreational & Party Lawn



Welcome to a Futuristic Hub

Welcome to a futuristic world where life is at its best. A world that is brimming with world class infrastructure. The project is situated near upcoming AI 4th City, the first ever Net Zero City of India. The project is also surrounded by world class developments like Tech Parks, Academic Institutions, Industries and much closer to RGI Airport.

Everything is outstanding here and everything is within. Vertex District is a perfectly integrated project where you can Work, Shop, Dine, Play and enjoy your living among the world class amenities.

So, Future is here, **Own It!**

