

ZURICH 955047913



Developer  
EXCELLENT DEVELOPERS

Phone : +91 9504 635 635, +91 9504 638 638  
Email : parvarish@vihav.com

VIHAV PARVARISH  
Behind Akshar Public School,  
Near Priya Cinemas, Sevasi-Bhayli,  
Vadodara.

Architect  
Bhaskar Narula  
Placekinesis Associates

SCAN FOR

Location



Web



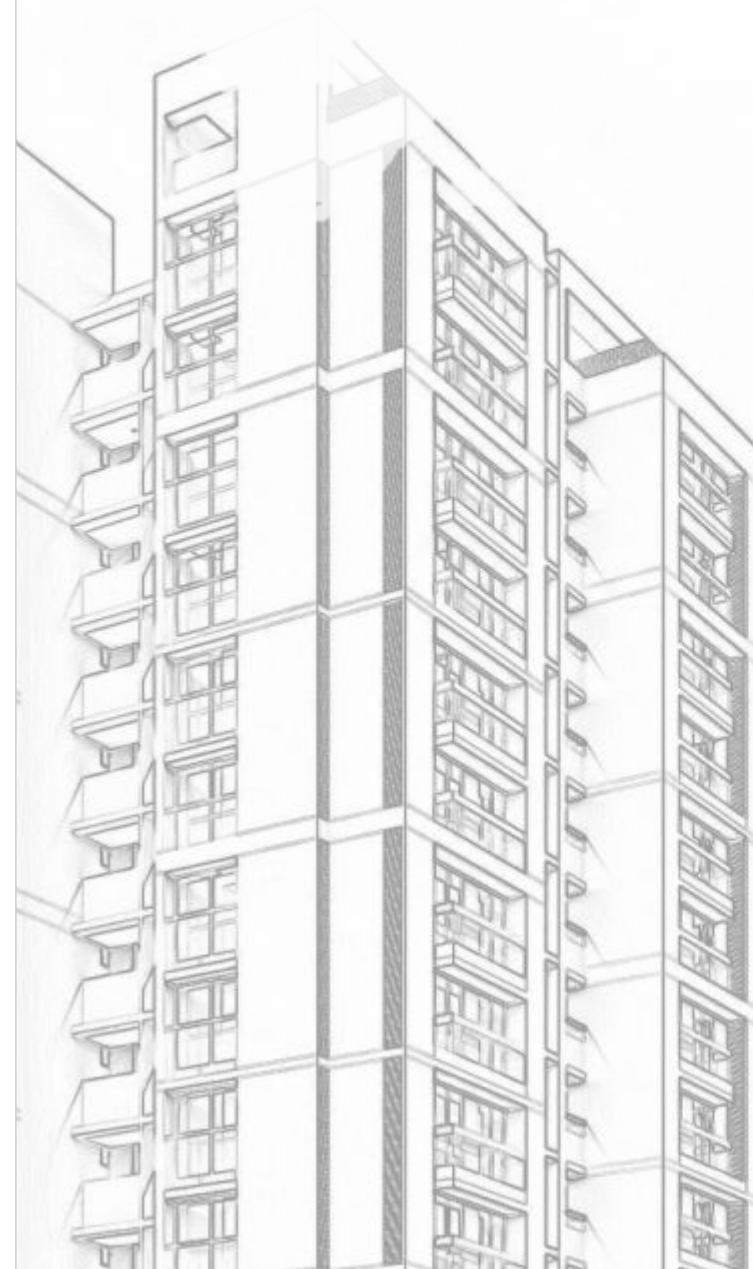
Brochure



Walkthrough



RERA No.: PR/GJ/VADODARA/VADODARA/Others/MAA09423/061221  
RERA W.: www.gujrera.gujarat.gov.in



  
**parvarish**  
by VIHAV



With over 25 years of collective experience in real estate, Vihav Group is a trusted builder in Vadodara with dozens of projects under its belt. With a talented team of architects and engineers, we've designed several residential as well as commercial real estate projects in the city. If you're in the market for a property in Vadodara, you've come to the right place. Vihav Group has been a pioneer in the real estate industry for years, with decades of experience spanning across various residential and commercial projects in Vadodara. We emphasize on quality construction, transparency, and ethics to provide spaces that you and your family can cherish for generations to come!

From creating designs to executing them, we've earned a reputation for providing quality construction and timely delivery with uncompromised standards. Our hard work and expertise in the real estate industry has helped us launch numerous successful projects in Vadodara.

Vihav Group is a well-renowned real estate builder for premium commercial & residential projects in Vadodara. We have perfected the art of living and working by providing uncompromisingly exceptional homes, offices, showrooms, and shops in the most pristine areas.

We are well-known for our ethical business practices and high level of customer satisfaction.

The inspiration behind Vihav Group's characteristically modern architecture lies rooted in the rich cultural heritage of Vadodara. Our buildings are a tribute to the historic glory of the city with a modern twist, paving the way for future landmarks.

At Vihav Group, we believe that quality is the best business model. And that plays a key role in making a difference with our luxury homes & commercial properties.

**2.8 Million** Sq.Ft. Area Construction  
**1800+** Happy Customers  
**11+** Commercial Project's  
**10+** Residential Project's  
**21+** Total Project's

## RESIDENTIAL PROJECTS

### NEW ALKAPURI, GOTRI



**KEYSTONE SKYVILLAS XL**  
 5B2HK APARTMENTS | 5B2HK PENTHOUSES  
 RAA11551/050423  
 www.gujrera.gujarat.gov.in  
 C.A 4200 Sq.FT

### NEW ALKAPURI, GOTRI



**KEYSTONE SKYMONT**  
 4B2HK APARTMENTS | 5B2HK PENTHOUSES  
 SAMPLE FLAT READY  
 RAA08652/210621  
 www.gujrera.gujarat.gov.in  
 C.A 3700 Sq.FT

### NEW ALKAPURI, GOTRI



**KEYSTONE SKYVILLAS**  
 4B2HK SKYRISE VILLAS  
 READY POSSESSION  
 RAA05736/170719  
 www.gujrera.gujarat.gov.in  
 C.A 2900 Sq.FT

### VASANA BHAYLI CANAL RING ROAD



**KEYSTONE 48**  
 4B2HK APARTMENTS  
 5B2HK PENTHOUSES  
 MAA10436/A1M/191022  
 www.gujrera.gujarat.gov.in  
 C.A 2700 Sq.FT TO 4765 Sq.FT

### GOTRI SEVASI, ROAD



**KEYSTONE 7**  
 4B2HK APARTMENTS  
 5B2HK PENTHOUSES  
 SAMPLE HOUSE READY  
 RAA07740/021220  
 www.gujrera.gujarat.gov.in  
 C.A 2100 Sq.FT TO 3925 Sq.FT

### NR. BRIGHT DAY SCHOOL, BHAYLI



**VIHAV CBD**  
 4B2HK APARTMENTS  
 5B2HK PENTHOUSES  
 SAMPLE FLAT READY  
 MAA10821/191022  
 www.gujrera.gujarat.gov.in  
 C.A 1829 Sq.FT TO 2934 Sq.FT

### 30MTR. CANAL RING ROAD, BHAYLI



**VIHAV VTC**  
 VIHAV TRADE CENTER  
 SHOWROOMS  
 OFFICES  
 FEW UNITS LEFT  
 READY POSSESSION  
 CAA02728/230518  
 www.gujrera.gujarat.gov.in  
 C.A 143 Sq.FT TO 2442 Sq.FT

### NEW ALKAPURI, GOTRI



**VIHAV ELINOR**  
 3&4 BHK LUXURIOUS FLATS  
 4&5 BHK PENTHOUSE  
 SAMPLE FLAT READY  
 RAA09451/101221  
 www.gujrera.gujarat.gov.in  
 C.A 1186 Sq.FT TO 1610 Sq.FT

### NR. GURUDWARA, TARSALI



**SPRING WOODS**  
 3&4 BHK BUNGALOWS  
 SAMPLE HOUSE READY  
 MAA10896/111122  
 www.gujrera.gujarat.gov.in  
 B.A 1257 Sq.FT TO 1346 Sq.FT

## COMMERCIAL PROJECTS

### DANDIYA BAZAR LINK ROAD



**Supremus II**  
 SHOWROOMS | SHOPS | OFFICES  
 POSSESSION SHORTLY  
 CAA08657/240621  
 www.gujrera.gujarat.gov.in  
 C.A 224 Sq.FT TO 4800 Sq.FT

### 30MTR. CANAL RING ROAD, BHAYLI



**VIHAV SKYONE**  
 SHOWROOMS | FEW UNITS LEFT  
 READY POSSESSION  
 MAA03997/061118  
 www.gujrera.gujarat.gov.in  
 C.A 245 Sq.FT TO 1073 Sq.FT

### NEAR ISCON HEIGHTS, GOTRI



**VIHAV Supremus**  
 SHOWROOMS | OFFICES  
 FEW UNITS LEFT  
 READY POSSESSION  
 CAA04117/261118  
 www.gujrera.gujarat.gov.in  
 C.A 1219 Sq.FT TO 4420 Sq.FT

### NR. HCG CANCER HOSPITAL, ATLADRA



**VBS**  
 VIHAV BUSINESS SQUARE  
 SHOWROOMS  
 OFFICES  
 FEW UNITS LEFT  
 READY POSSESSION  
 CAA04381/161218  
 www.gujrera.gujarat.gov.in  
 C.A 572 Sq.FT TO 2300 Sq.FT

### NR. BRIGHT DAY SCHOOL, BHAYLI



**VIHAV CBD**  
 SHOWROOMS  
 SHOPS  
 OFFICES  
 MAA10821/191022  
 www.gujrera.gujarat.gov.in  
 C.A 264 Sq.FT TO 8800 Sq.FT

### GOTRI MAIN ROAD



**WEALTH SQUARE**  
 SHOWROOMS  
 SHOPS  
 OFFICES  
 READY POSSESSION  
 CAA06698/A1C/110820  
 www.gujrera.gujarat.gov.in  
 C.A 139 Sq.FT TO 699 Sq.FT

## COMPLETED PROJECTS



**ELITE SQUARE**  
 SHOPS - SHOWROOMS - OFFICES



**EXCELUS**  
 SHOWROOMS - SHOPS - OFFICES

**NSIGN**  
 BUSINESS PLACE

Mumbai To Delhi Highway

# parvarish by VIHAV

Nestled in a prime area near Sevasi-Canal Road, Vihav Parvarish is a peaceful haven situated behind Akshar Public School, offering the perfect blend of convenience and tranquillity near Priya Cinemas in Bhayli, Vadodara.

75 MTR Proposing Road



## A LEAP TOWARD A THRIVING LIFE

Welcome to the epitome of modern living at Vihav Parvarish. This architectural masterpiece stands as a testament to contemporary design and harmonious living. With its sleek lines and sophisticated design, this building symbolises the essence of a unified community. Every aspect of this structure has been meticulously crafted to merge aesthetics with functionality, offering a seamless blend of comfort, convenience, and style.

---





## EMBARKING ON A LIFE OF WONDERS

Behold the panoramic view of Vihav Parvarish, where life transcends the ordinary and embraces blessings at every corner. This aerial perspective captures the essence of an extraordinary lifestyle, promising a blend of tranquility and magnificence. The layout, the surroundings, and the thoughtful amenities all echo a life that is not just great but truly blessed. This expansive bird's-eye view is a glimpse into the enchanting world where life thrives in greatness and grace.

## CONFLUENCE OF CONTEMPORARY

Gaze up at Vihav Parvarish from the ground and witness a captivating sight that encompasses not only the towering buildings but also the vibrant landscape of the surrounding park and amenities. The sprawling green spaces, recreational spots, and communal facilities create an inviting haven. This lower perspective captures a community that blends natural beauty with modern comfort, offering a lifestyle where residents can relish the beauty of nature alongside the convenience of well-crafted amenities.







# THOSE WHO WANT TO CHERISH EACH DAY

Embrace a lifestyle of pure elation at Vihav Parvarish, where every amenity is a testament to living life to the fullest. From the Lego Lounge sparking creativity to the vibrant kids' play area fostering laughter, from the tranquil library inviting quiet contemplation to the art room igniting imagination, and the advanced music rooms resonating with melodies of passion – each space is a canvas for enriching experiences. Every amenity here is meticulously crafted to foster not just leisure but an environment that nurtures exuberant living, fostering a world where joy knows no bounds.



**TABLE TENNIS**  
Creative art room and lively table tennis.



**LEGO LOUNGE**  
Let your creativity soar in our Lego Lounge with vibrant building blocks.



**GIANT CHESS BOARD**  
Experience chess like never before on our expansive outdoor board.



**CARROM**  
Have fun with friends in our inviting Carrom area for casual games.



**LIBRARY  
( KIDS / ADULTS )**  
A literary haven for readers of all ages.



**TV LOUNGE**  
Relax in comfort at our cozy TV Lounge for leisure and entertainment.



**ADVANCED  
MUSIC ROOM**  
Give a chance to your long forgotten hobby.





**YOGA**  
Tranquil yoga haven for inner balance.



**GYM**  
Innovative fitness hub for wellness pursuits.



**GAZEBO SEATING & SENIOR CITIZEN GARDEN**  
Tranquil gazebo and garden for senior serenity.



**AMUSEMENT PARK**  
Create joyful memories in our on-site Amusement Park.



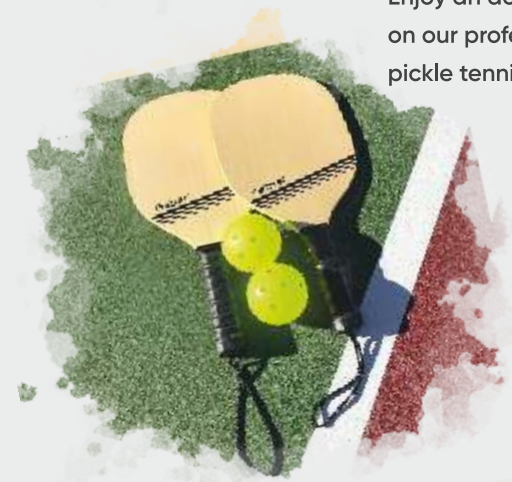
**ADULT & KIDS SWIMMING POOL**  
Sky-high aquatic retreat for all ages.



**KIDS PLAY ROOM**  
Playtime paradise with a touch of Lego magic.



**SKATING RINK**  
Glide and twirl on our smooth skating rink for a fun and active experience.



**PICKLE TENNIS**  
Enjoy an active game on our professional pickle tennis courts.



**BASKETBALL**  
Dynamic basketball court for athleticism and camaraderie.



**SKY OBSERVATORY ON TERRACE**  
Elevated terrace observatory for cosmic connection.



**BANQUET HALL**  
Celebrate special moments in style at our versatile Banquet Hall.

**BADMINTON**  
Have fun with fast-paced rallies on our well-kept badminton courts.



## AMENITIES MADE JUST FOR YOU

Witness the epitome of luxury at Vihav Parvarish with the stunning enclosed sky pool nestled amidst the buildings. This serene aquatic escape, shrouded in an enclosure, offers residents a secluded haven to unwind and rejuvenate. Elevated above ground, the pool invites a sense of serenity and exclusivity, where the play of light and shadow creates a mesmerising ambiance. The design allows for a unique experience, allowing residents to swim while being enveloped in the vastness of the sky. It's not just a pool; it's an elevated oasis, a tranquil retreat where residents can bask in the delight of swimming while being sheltered under the open sky.





Discover a world of fulfilled hobbies at Vihav Parvarish, where the dynamic view of the illuminated table tennis court and serene garden at night invites residents to engage in their passions. From spirited matches on the glowing table tennis court to tranquil moments of personal hobbies in the softly lit garden, each evening becomes a canvas for residents to pursue and enjoy their diverse interests in a vibrant and peaceful setting.

**ENJOY EACH DAY  
TO THE FULLEST**



## VALUE ADDITIONS

Prime Location Of BHAYLI-SEVASI With Lavish Surrounding.

Huge Wide Space Between All Towers For Unmatched Premium Living Experience

Dedicated No Drive Zone In Campus For Enhanced Safety

Adequate Fire Safety System As Per Government Norms

One Allotted Car Park Per Flat

Power Backup For Common Area



FIRST FLOOR LAYOUT



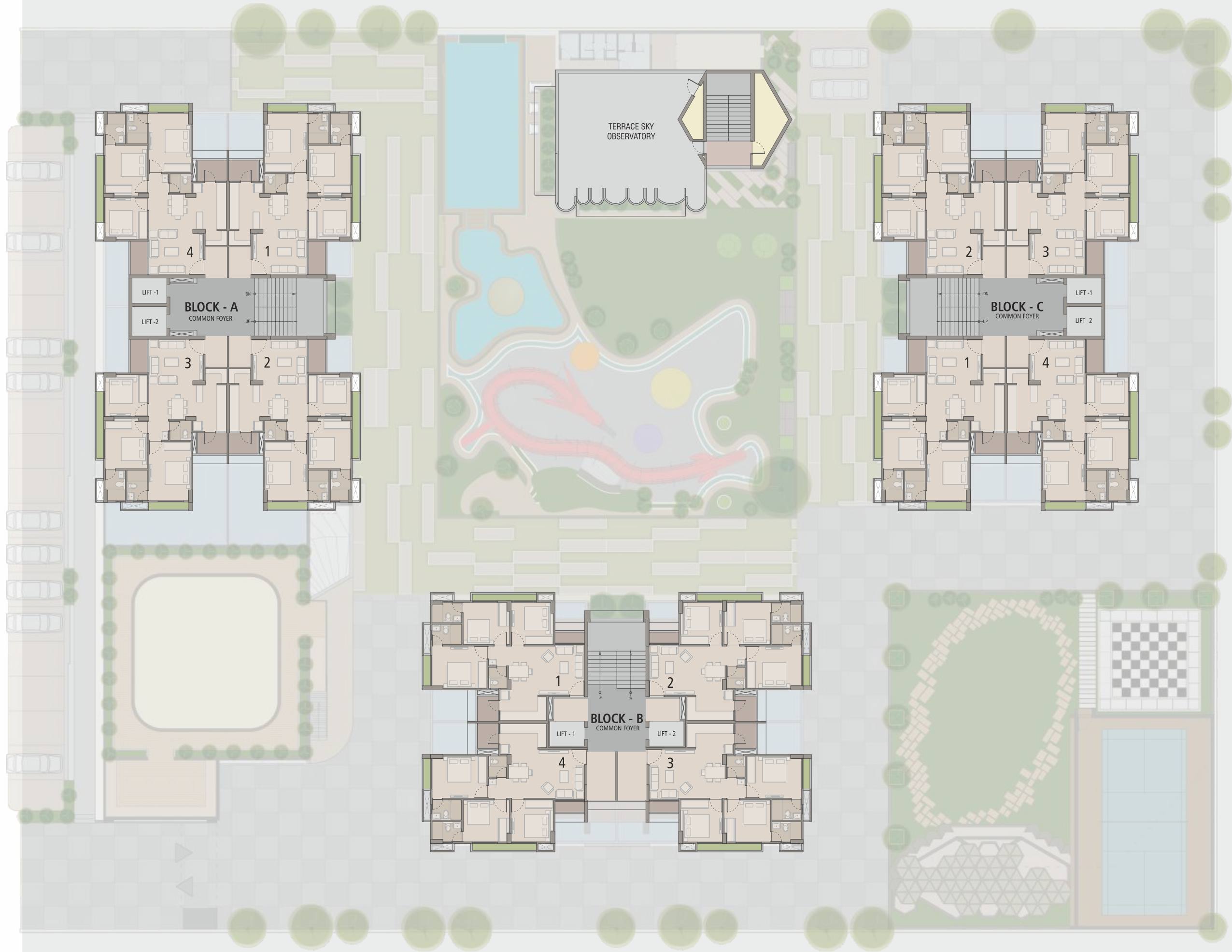
18.0 MT, WIDER ROAD



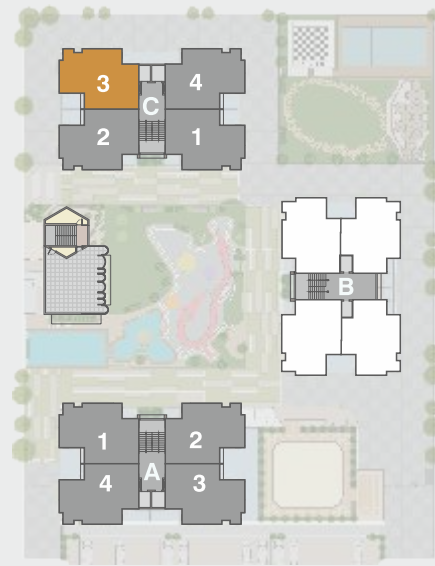
TYPICAL FLOOR LAYOUT



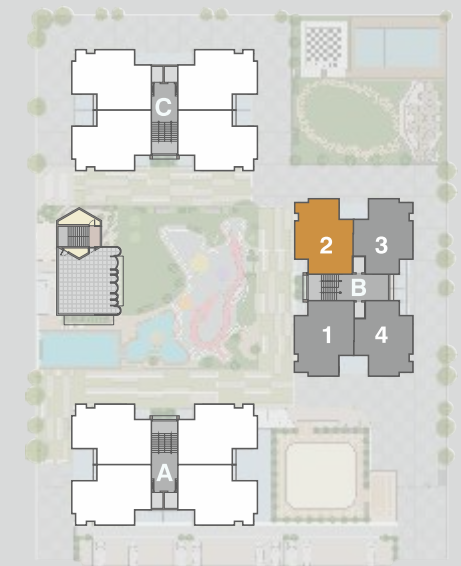
18.0 MT, WIDER ROAD



**TOWER - A & C**  
TYPICAL FLOOR PLAN



**TOWER - B**  
TYPICAL FLOOR PLAN





## FOR THOSE SAVOURING **THE POETRY** OF EVERY DAY

Embrace a life of fulfilled passions and contentment at Vihav Parvarish. From the tranquil abodes and vibrant communal spaces to the array of amenities catering to diverse interests, this community is a testament to harmonious living. It's a place where the warmth of family, the zest of hobbies, and the serenity of nature come together seamlessly. Vihav Parvarish is not just a residence; it's an embodiment of a vibrant, fulfilled life, where every moment is lived with exuberance.



### SPECIFICATION

**RCC**  
Earthquake Resistance  
Structure Designed by  
Approved Structure  
Engineer

**FLOORING**  
800 x 800 Vitrified Flooring  
in all Area, Antiskid Flooring  
in Balcony and Wash

**WALL FINISH**  
Interior : 2- Coat Putty with  
Primer Finish  
Exterior : Texture with Weather  
Resistant Paint

**ELECTRICAL**  
Concealed Copper ISI  
Wire with Modular  
Switches Sufficient  
Electrical Point as per  
Consultant MCB as  
Required

**BATH**  
Designer Bathrooms  
with Premium Quality  
Fittings and Vessels  
Glazed Tile Dado Up-to  
Door Height Good Quality  
Concealed PVC Plumbing

**DOORS**  
Main Door : High Quality  
Wooden Decorative Main  
Door With Safety Locks

Other Internal Door :  
Premium Quality with  
Laminated Branded Flush  
Doors

**WINDOWS**  
Premium Quality Aluminum  
Sliding Windows with  
Mosquito Net



Indulge in modern living at Vihav Parvarish, where every space exudes elegance and functionality. The serene bedroom, scenic balcony, and practical kitchen offer a blend of style, comfort, and seamless living, ensuring a refined living experience in every corner of your home.