

# VIHHARI



— Happy Living —  
For now.. for Ever..



**Vazhraa  
Nirmaan**

*Where Quality Prevails*

**Corporate Office :**

1<sup>st</sup> Floor, Bhavana Enclave, VI<sup>th</sup> Phase,  
KPHB Colony, Hyderabad - 500 085.

Cell : 98480 21614, 98663 09215.

E\_mail : vazhraanirmaan@gmail.com

**Site Address :**

Survey No.: 182 & 184, Beside Mount Idera Zee School,  
Manikonda, Hyderabad - 500 089.

Cell : 89 88 6666 93 / 94 / 95

E\_mail : sales@vazhraanirmaan.com

**Architects & Engineers :**



**Akshaya Infra  
Consultants Pvt. Ltd.**

Architects & Engineers  
Phone: 2315 4949 / 4848

1st Floor, Bhavana Enclave, VI<sup>th</sup> Phase,  
KPHB Colony, Hyderabad - 500 085.

Contact : +91 40 2315 4848, 4949, 4999.

E\_mail : akshaya@akshayainfra.com

Concept by **kreaoz** +91 9889 11 99 00



**Vazhraa  
Nirmaan**

*Where Quality Prevails*



# VIHHARI

Times are changing fast, and they are changing for the better. Nothing today seems to be forever, with prosperity and growth being the name of the aspects. Because world is opening up many new ways to live, along with many lifestyle options. Clearly the changes around us have ushered in a world of developments in progress. Welcome to a whole new era of living, presenting Vihhari. Come, rise to a great new lifestyle.





Invigorating  
experiences  
junior cherishes



With every passing day, real estate design is changing and giving way to residential communities where blueprint takes prime precedence. Right from the facade, all the way to how space is planned. Open areas have created lifestyle-value for its residents, creating a refreshing life. We believe landscapes and hardscapes in our proposed residential projects have made residents feel fresh and rejuvenated. We are here to build homes with a sense of design and cutting-edge ideas.



## MASTER PLAN



Note : Master Plan may vary subject to neighbouring land acquisition which is under process



# TYPICAL FLOOR PLAN

# BLOCK - C



Area Statement (in sft.)	Series	1	2	3	4	5	6	7	8	9	10
Carpet Area		1300	820	820	1254	1309	1306	853	853	853	1306
wash & balcony		146	99	99	99	99	196	122	122	122	196
<b>Salable Area</b>		<b>1955</b>	<b>1260</b>	<b>1260</b>	<b>1830</b>	<b>1905</b>	<b>2010</b>	<b>1320</b>	<b>1320</b>	<b>1320</b>	<b>2010</b>

Bask in the  
glory of a  
New Life style



As a multi-Storied community, Vihhari is designed to ensure that you are not cramped by darkness by ensuring there are no common walls between any two homes here. Which means, fresh air, natural light and movement of breeze are well in abundance. Vihhari is a communion of both 2 BHK and 3 BHK flats in several area sizes. It's where you will get to have plenty of free space around you and also get to breathe fresh and nice air.







A layout of  
conveniences and  
clever spaces



Vihhari is an avenue of all that you wish to be surrounded by intelligent planning, practical spacing and a design that gets the most out of the place it is created on. With a smart mix of 2 BHK and 3 BHK homes in a plethora of sizes, the homes here range from 1260 sft. to 2010 sft. (Salable Area) and clearly, there's design, there's aesthetics and there's lovely landscaping that makes this community fabulous.





# GROUND & FIRST FLOOR PLAN

# BLOCK - D



Area Statement (in sft.)	Series	1	2	3	4	5	6	7	8	9	10	11
Carpet Area		860	820	820	820	880	820	792	792	792	792	835
Wash & Balcony Area		103	99	99	99	103	99	104	104	104	104	109
<b>Salable Area</b>		<b>1320</b>	<b>1260</b>	<b>1260</b>	<b>1260</b>	<b>1345</b>	<b>1260</b>	<b>1225</b>	<b>1225</b>	<b>1225</b>	<b>1225</b>	<b>1285</b>

A new view,  
for a  
renewed you



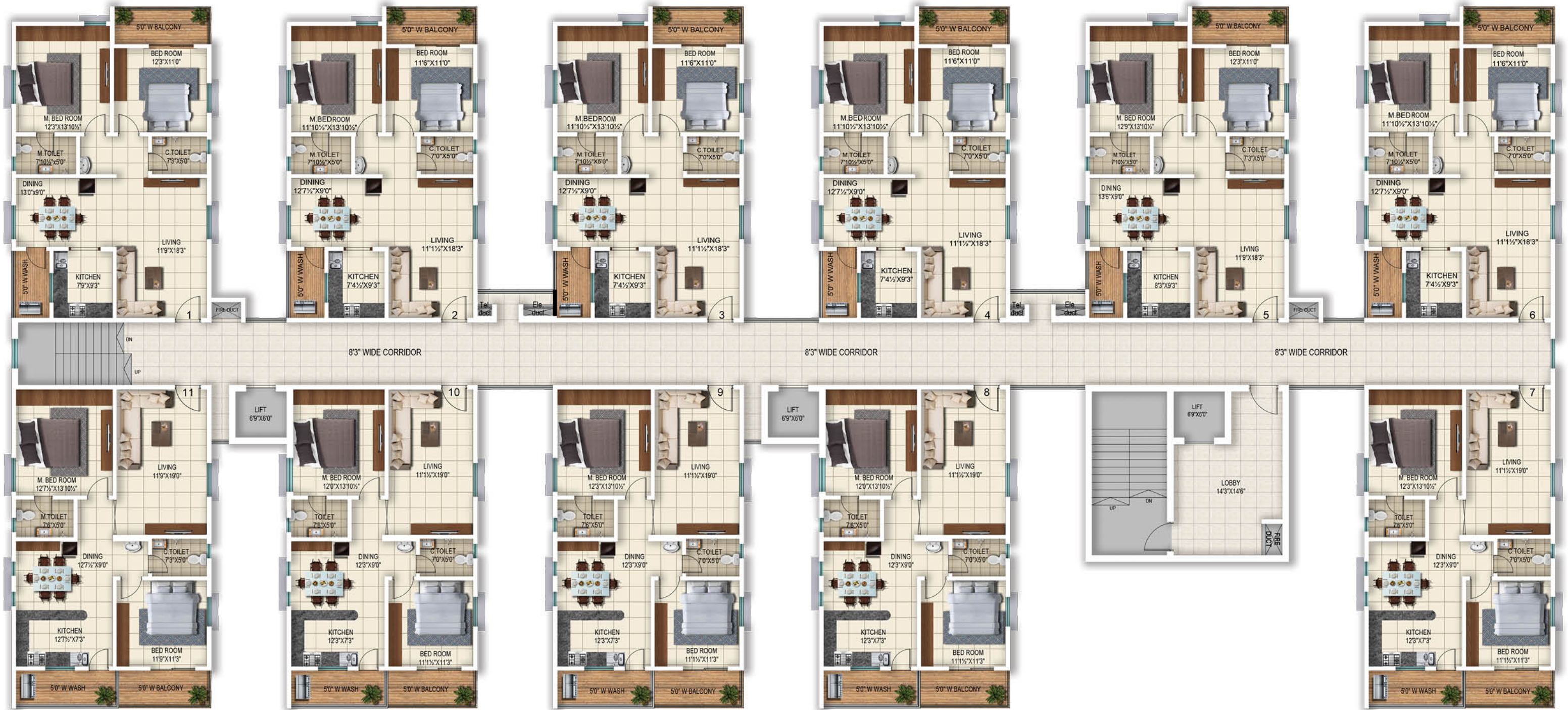
When you're looking forward to view life from a whole new perspective, home is the place that will make it easier for you to look at it in a different way. Add to it, a home that is designed to look fabulous, you have a great going for yourself. Vihhari is one of the most good looking communities you will find anywhere closer to you. With a great design and an inviting facade, your home will be your new pride.





# TYPICAL FLOOR PLAN

# BLOCK - D



TYPICAL FLOOR PLANS



Area Statement (in sft.)	Series	1	2	3	4	5	6	7	8	9	10	11
	Carpet Area	860	820	820	820	880	820	853	853	853	853	895
	Wash & Balcony Area	103	99	99	99	103	99	122	122	122	122	127
	<b>Salable Area</b>	<b>1320</b>	<b>1260</b>	<b>1260</b>	<b>1260</b>	<b>1345</b>	<b>1260</b>	<b>1320</b>	<b>1320</b>	<b>1320</b>	<b>1320</b>	<b>1380</b>

A boon and a blessing of quality living



There is nothing that brings in peace of mind than the fact that the home you are living in has been created on the foundation of top-notch quality standards. At Vihhari, we have applied construction material of high standards to present you a life of superior living. It's your turn to check out the place, so you can check in to it soon.





A gift that  
you can  
relish for life



At Vihhari, we've planned enough to ensure that boredom gives way to leisure, fun and moments of life you yearn for. Not just one day, but every single day, we've ensured that a variety of recreational options compliment your home, so that you don't have to step out for them. The most exciting part of living here is the fact that everything here is planned to create some of life's most exciting moments.

VIHHARI



- ◆ Air Conditioned Gym with reputed make machinery
- ◆ HMWSSB water provided
- ◆ CCTV cameras at security gates & entrance of each building
- ◆ Exclusive fire fighting system
- ◆ 100% Generator backup
- ◆ Children play area and Landscaped Garden
- ◆ Piped Gas Connection
- ◆ Club House
- ◆ 24 Hours Security with MyGate App
- ◆ Adult & Baby Swimming Pool
- ◆ Solar fencing all around the boundary
- ◆ Sewage Treatment plant

Amenities  
&  
Highlights





## SPECIFICATIONS

### STRUCTURE :

Reinforced Cement Concrete Framed Structure designed to withstand Wind and Seismic Loads.

### SUPER STRUCTURE :

6" External wall and 5" internal wall with quality AAC Blocks with jointing mortar.

### ALL DOORS :

Imported wood door frame and Flush shutter with Veneer & melamine polish on both sides, fitted with good quality hardware and locking system of reputed make.



### KITCHEN :

Cooking platform of Granite and Stainless steel sink with water tap & Provision for Aqua guard.

### WATER SUPPLY :

Adequate water supply for all flats through Pneumatic System.

### VERTICAL CIRCULATION :

Lift of Schindler or equivalent make as per design / Approval.

### FINISHES :

INTERNAL : Smooth plastered surface treated with Birlawall care / JK putty and painted with emulsion of reputed make.  
EXTERNAL : Textured surface with weather proof paint of reputed make.

### WINDOWS & FRENCH DOORS :

UPVC Frames with plain glass and additional mosquito screen.



### SANITARY :

Wash basin, EWC with push valve type of flushing & all CP fittings of American Standard / Jaquar or equivalent.  
Provision for Geyser & Exhaust fan.

### POWER BACKUP :

100% Generator Backup.

### PARKING :

Adequate car parking is available.

### FLOORING :

ALL ROOMS : 800x800mm vitrified tiles of reputed make.  
TOILETS/WASH AREA : Anti skid ceramic tiles for toilets and balconies.  
STAIRCASE : Granite Flooring  
CORRIDORS : Vitrified Tiles Flooring

### TILE DADOING :

KITCHEN : Digital glazed ceramic tile dado upto 2' height above kitchen platform.  
TOILET : Digital glazed ceramic wall tile dado upto 7' height of reputed make.  
UTILITY/WASH : Glazed ceramic tile dado upto 3' height.



### ELECTRICAL :

3 Phase power supply for each individual flat. PVC Piping of Sudhakar or equivalent make.  
Concealed copper wiring of Finolex or equalant make. AC points for all Bed rooms.  
Power points for cooking range, chimney, microwave, refrigerator, mixer, grinder in kitchen and Geyser point in Toilets. Modular switches of legrand or equivalent make.

### AMENITIES :

Club house of built-up area equivalent to 3% of the total residential area as per HMDA norms.

The standards  
for a  
standard living



Vihhari is built to be an epitome of top quality living, thanks to superior quality of material that every square foot of this place will be created with. The reason being, what matters to you the most and importantly, is that your home should be built with all the quality and something which we believe should reflect in your life as well.

VIHHARI



in the middle  
of all the  
development



Other completed project:



Hi-rise apartment  
@ Nizampet

Other ongoing project:



Hi-rise apartment  
@ Nizampet

LOCATION MAP (Not to Scale)



Vihhari is right next door to top global companies and the IT hub of Hyderabad. So make this place your home, and cut out the hassles of driving through traffic jams. Vihhari finds itself in the Hyderabad, Lanco hills road. While it's distant from the crowd and noise of the city, it's yet in a world that's its own. You'll be pleased to know that everything you are likely to look for, resides right in your neighbourhood.