



WESTERN
CONSTRUCTIONS

GRADE-A COMMERCIAL PROJECT

IN NANAKRAMGUDA

WESTERN WINDSOR PARK

LOCATION OVERVIEW

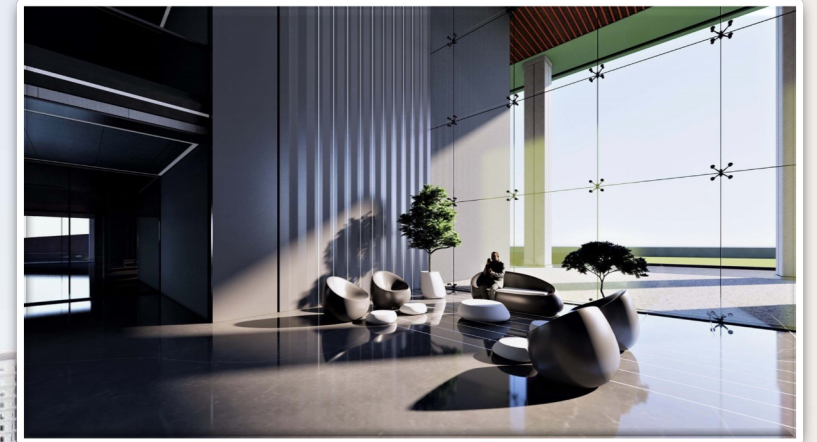


ABOUT PROPERTY

| | | |
|---------------|---|--|
| Floor Height | : | 4.05 Mts |
| Grid Spacing | : | 11 * 11.5 Meters |
| Floor Loading | : | 500 Kgs Per Square meter |
| Elevators | : | 40 Nos. High Speed Lifts 4 Nos. Service Lifts |

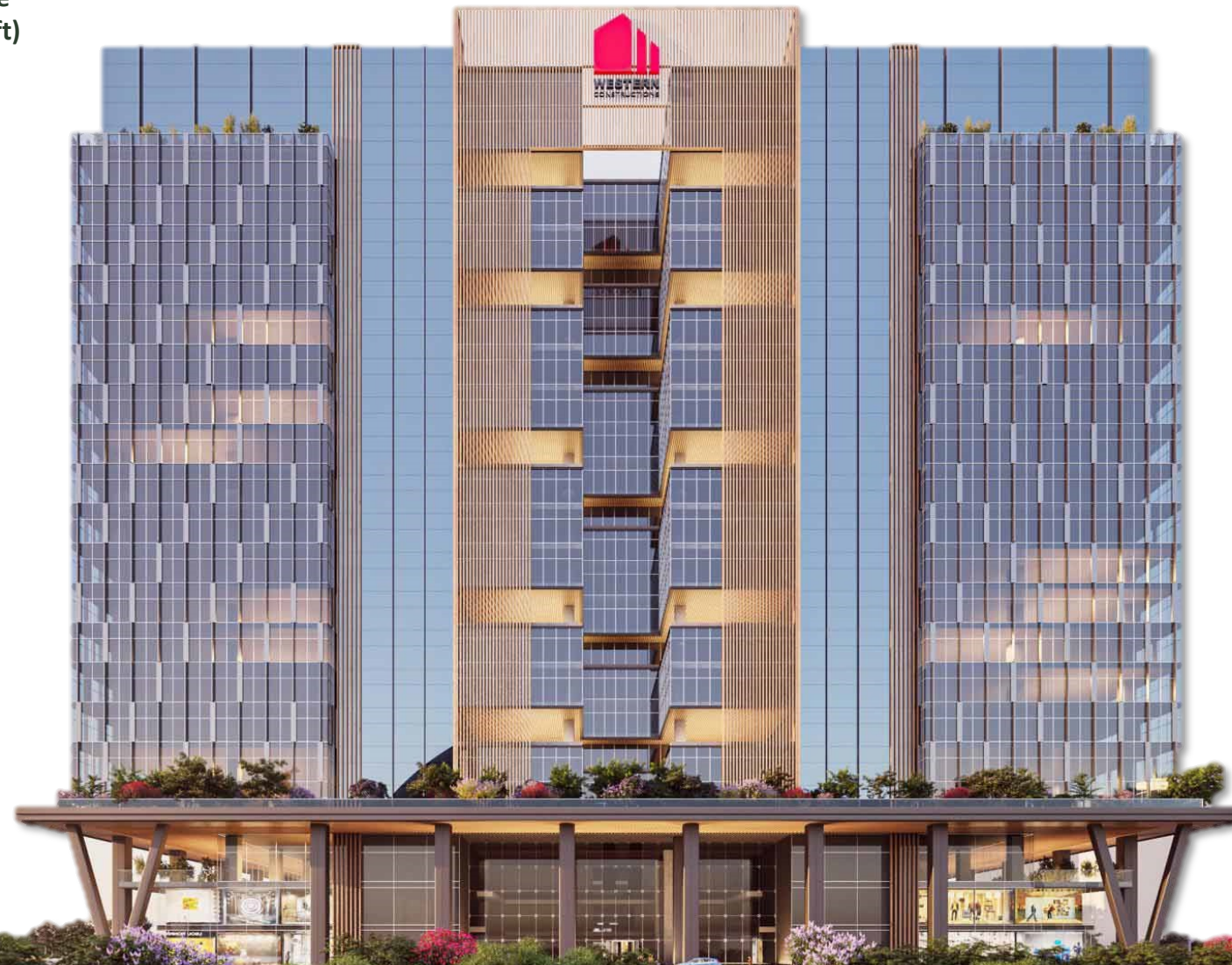
- **Leasable Area**
28 Lakh sft approx.
- **Parking Area**
17 Lakh sft approx.
- **Vertical Height**
4 Cellars + G + 21 Floors
- **Power Support**
100% DG Back-Up

PRICE
INR 10500
Per SFT



AREA STATEMENT - WINDSOR PARK

| | Block A (Saleable Area in sft) | Block B (Saleable Area in sft) |
|-----------------------|--------------------------------------|--------------------------------------|
| G. Floor | 101685 | |
| 1 st Floor | 100647 | |
| Environmental Deck | | |
| 2 nd Floor | 68947 | 68350 |
| 3 rd Floor | 68947 | 68350 |
| 4 th Floor | 63072 | 62740 |
| 5 th Floor | 68947 | 68350 |
| 6 th Floor | 68947 | 68350 |
| 7 th Floor | 63072 | 62740 |
| 8 th Floor | 68947 | 68350 |
| 9 th Floor | 68947 | 68350 |



| | Block A (Saleable Area in sft) | Block B (Saleable Area in sft) |
|------------------------|--------------------------------------|--------------------------------------|
| 10 th Floor | 68947 | 68350 |
| 11 th Floor | 63072 | 62740 |
| 12 th Floor | 68947 | 68350 |
| 13 th Floor | 68947 | 68350 |
| 14 th Floor | 72266 | 71633 |
| 15 th Floor | 66269 | 65899 |
| 16 th Floor | 72266 | 71633 |
| 17 th Floor | 72266 | 71633 |
| 18 th Floor | 66269 | 65899 |
| 19 th Floor | 72266 | 71633 |
| 20 th Floor | 72266 | 71633 |



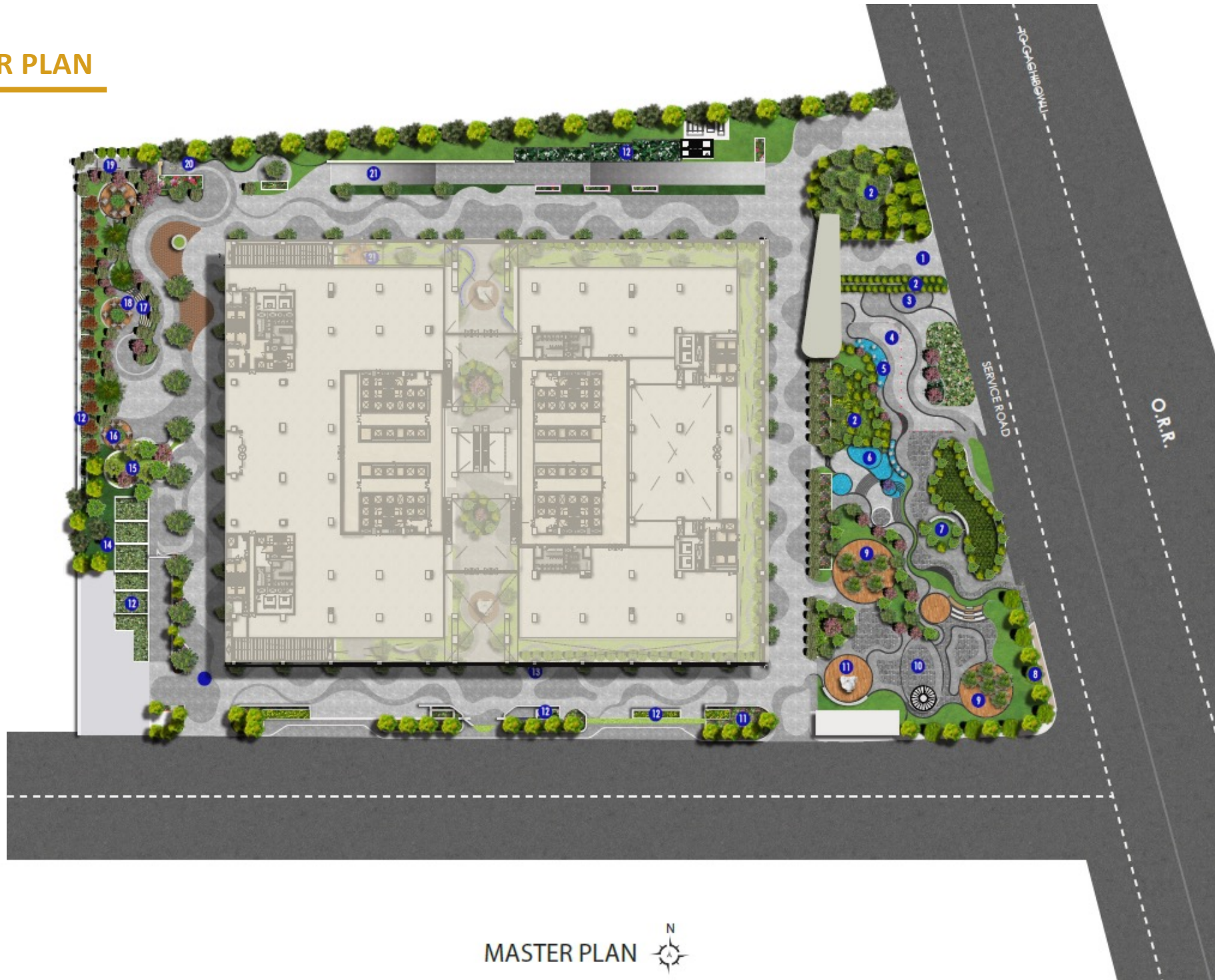
ENVIRONMENTAL DECK



MASTER PLAN

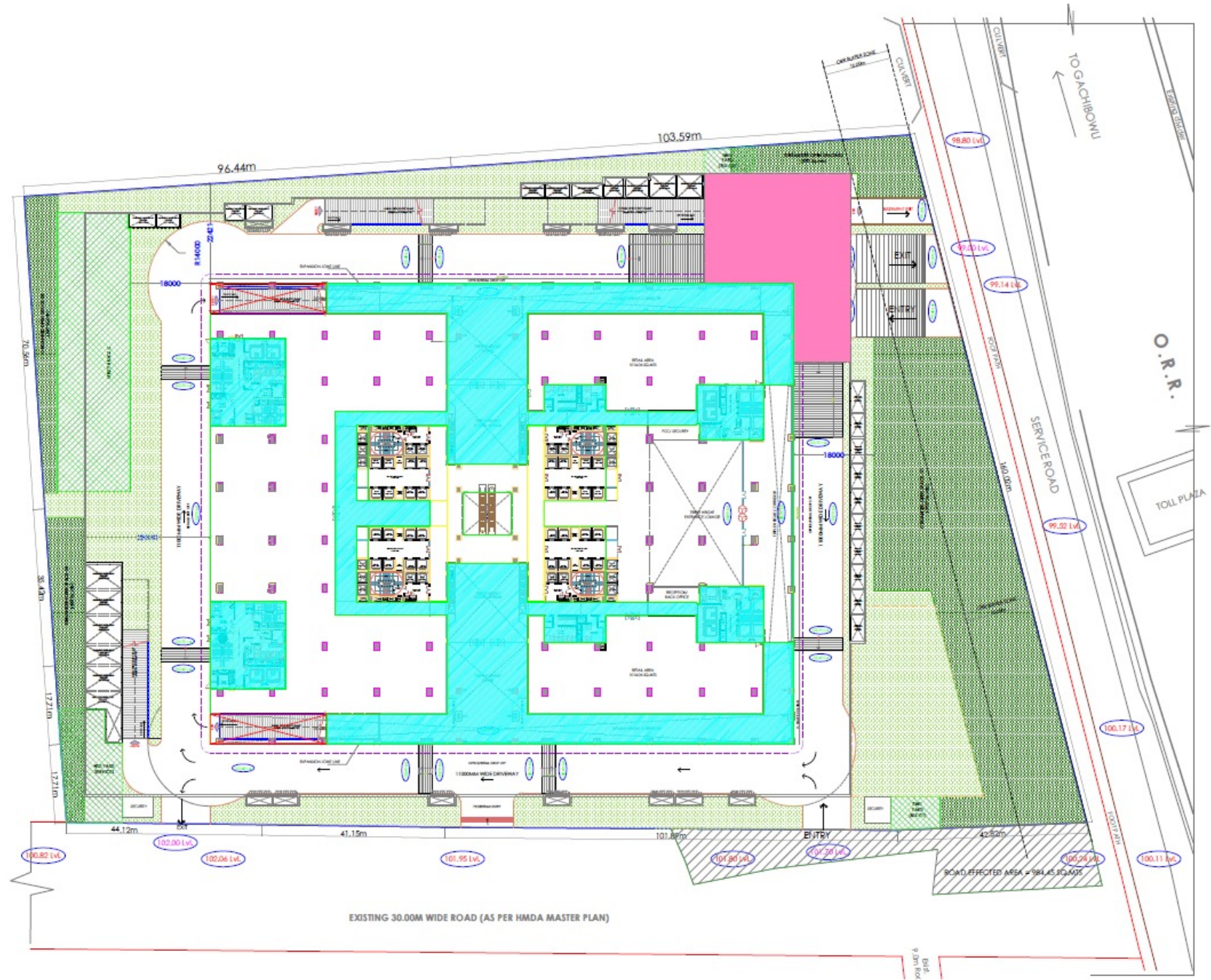
LEGEND :

1. ENTRANCE
2. STEPPED PLANTING
3. DROP-OFF PLAZA
4. DROP-OFF PEDESTRIAN PLAZA
5. WATER FEATURE
6. CASCADING WATER FEATURE
7. PLANTER WITH SEATING AREA
8. TROPICAL PLANTING
9. LANDSCAPE PLAZA TREE BOSQUE AREA
10. CAFETERIA
11. LANDSCAPE SCULPTURE PLAZA
12. VENTILATION CUT OUT WITH PLANTER BED
13. POTTED PLANTS
14. LAWN
15. RAISED PLANTER
16. LANDSCAPE PAVED PLAZA WITH SEATINGS
17. AMPHITHEATER
18. STAGE
19. D.G EXHAUST AREA
20. OUTDOOR GYM
21. RAMP



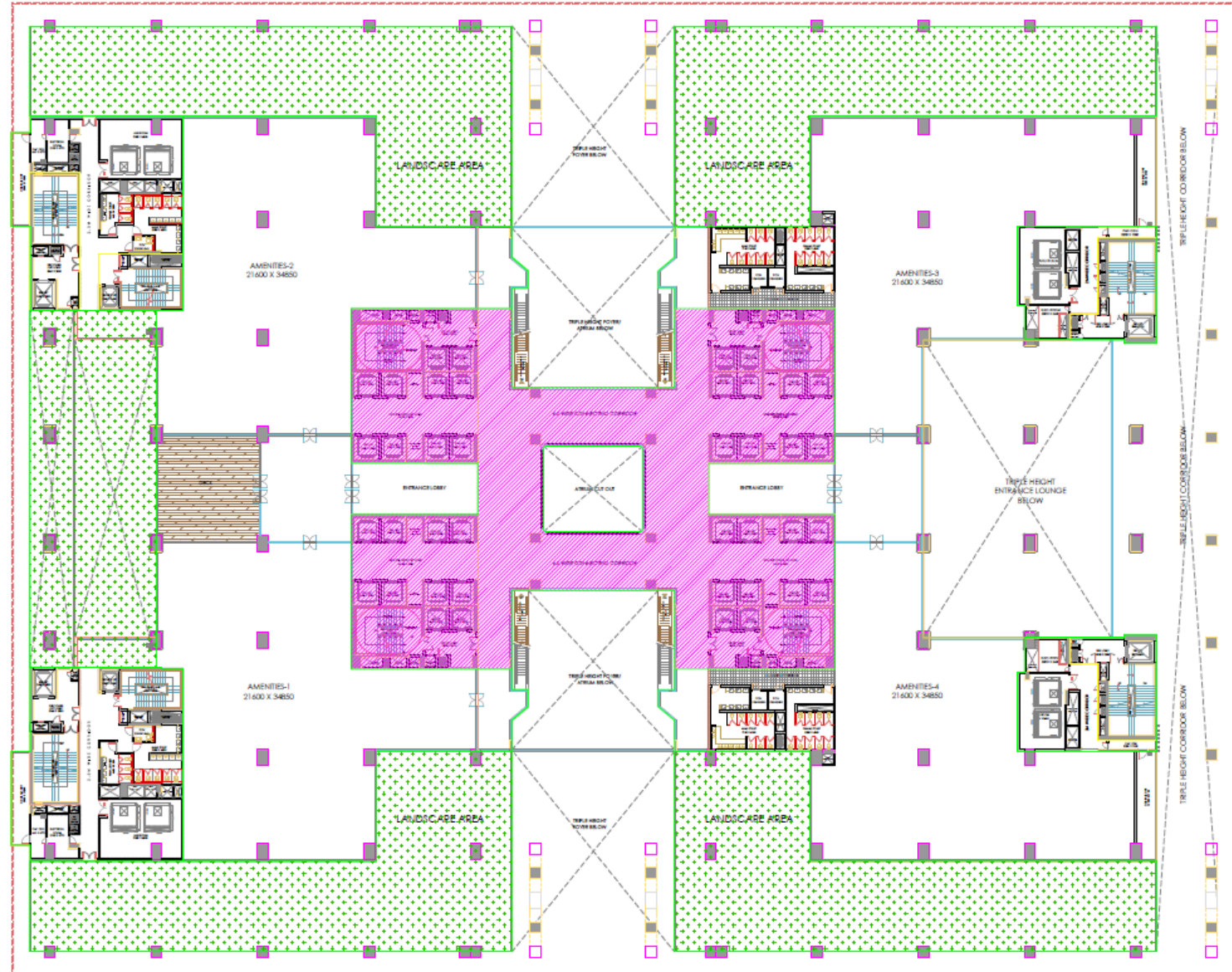
GROUND FLOOR PLAN

| | Block A (Saleable Area in sft) | Block B (Saleable Area in sft) |
|--------------------|-----------------------------------|-----------------------------------|
| G. Floor | 101685 | |
| 1st Floor | 100647 | |
| Environmental Deck | | |
| 2nd Floor | 68947 | 68350 |
| 3rd Floor | 68947 | 68350 |
| 4th Floor | 63072 | 62740 |
| 5th Floor | 68947 | 68350 |
| 6th Floor | 68947 | 68350 |
| 7th Floor | 63072 | 62740 |
| 8th Floor | 68947 | 68350 |
| 9th Floor | 68947 | 68350 |
| 10th Floor | 68947 | 68350 |
| 11th Floor | 63072 | 62740 |
| 12th Floor | 68947 | 68350 |
| 13th Floor | 68947 | 68350 |
| 14th Floor | 72266 | 71633 |
| 15th Floor | 66269 | 65899 |
| 16th Floor | 72266 | 71633 |
| 17th Floor | 72266 | 71633 |
| 18th Floor | 66269 | 65899 |
| 19th Floor | 72266 | 71633 |
| 20th Floor | 72266 | 71633 |



EV DECK PLAN

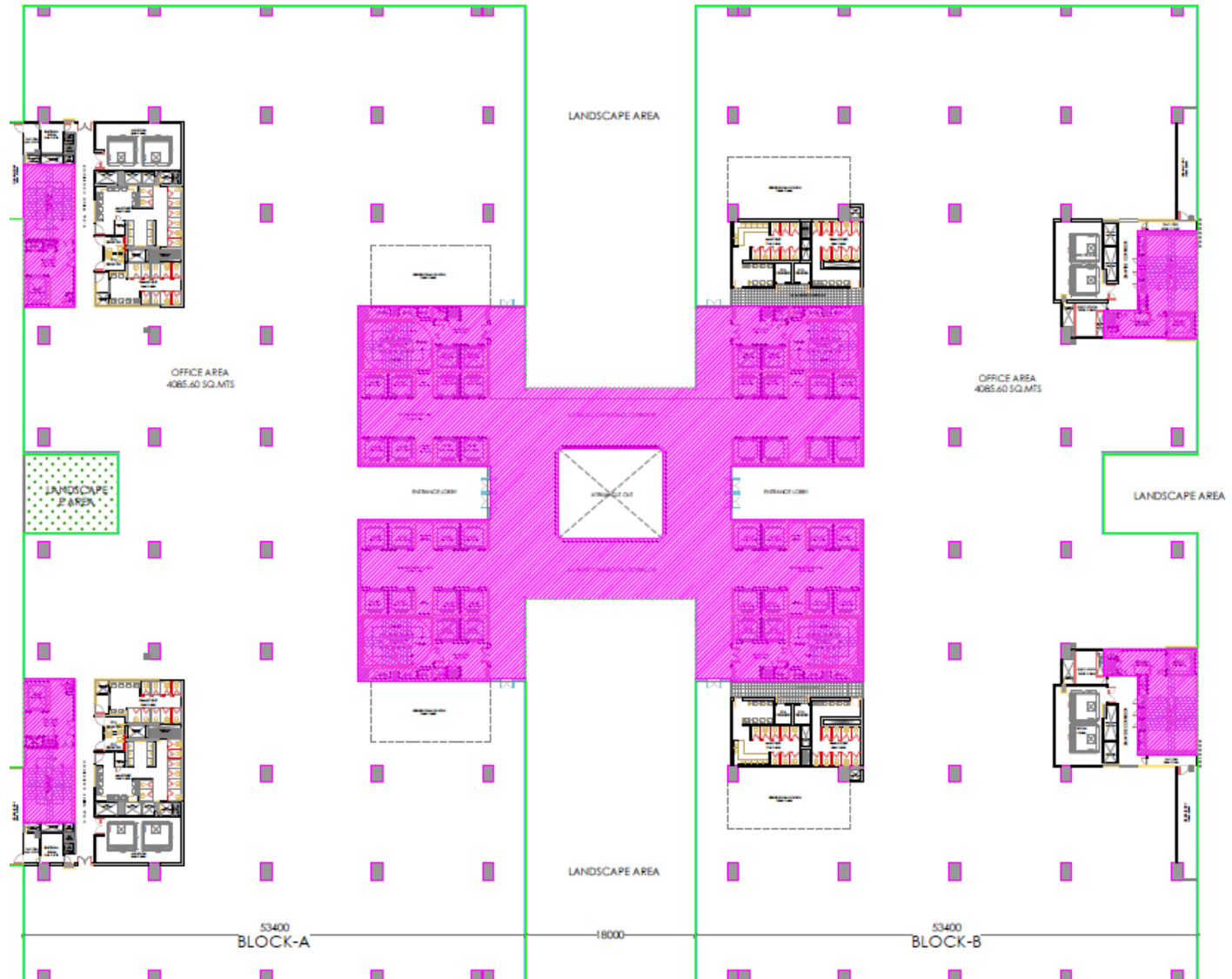
| | Block A (Saleable Area in sft) | Block B (Saleable Area in sft) |
|---------------------------|-----------------------------------|-----------------------------------|
| G. Floor | 101685 | |
| 1st Floor | 100647 | |
| Environmental Deck | | |
| 2nd Floor | 68947 | 68350 |
| 3rd Floor | 68947 | 68350 |
| 4th Floor | 63072 | 62740 |
| 5th Floor | 68947 | 68350 |
| 6th Floor | 68947 | 68350 |
| 7th Floor | 63072 | 62740 |
| 8th Floor | 68947 | 68350 |
| 9th Floor | 68947 | 68350 |
| 10th Floor | 68947 | 68350 |
| 11th Floor | 63072 | 62740 |
| 12th Floor | 68947 | 68350 |
| 13th Floor | 68947 | 68350 |
| 14th Floor | 72266 | 71633 |
| 15th Floor | 66269 | 65899 |
| 16th Floor | 72266 | 71633 |
| 17th Floor | 72266 | 71633 |
| 18th Floor | 66269 | 65899 |
| 19th Floor | 72266 | 71633 |
| 20th Floor | 72266 | 71633 |



ENVIRONMENTAL DECK

2nd FLOOR PLAN

| | Block A (Saleable Area in sft) | Block B (Saleable Area in sft) |
|--------------------|-----------------------------------|-----------------------------------|
| G. Floor | 101685 | |
| 1st Floor | 100647 | |
| Environmental Deck | | |
| 2nd Floor | 68947 | 68350 |
| 3rd Floor | 68947 | 68350 |
| 4th Floor | 63072 | 62740 |
| 5th Floor | 68947 | 68350 |
| 6th Floor | 68947 | 68350 |
| 7th Floor | 63072 | 62740 |
| 8th Floor | 68947 | 68350 |
| 9th Floor | 68947 | 68350 |
| 10th Floor | 68947 | 68350 |
| 11th Floor | 63072 | 62740 |
| 12th Floor | 68947 | 68350 |
| 13th Floor | 68947 | 68350 |
| 14th Floor | 72266 | 71633 |
| 15th Floor | 66269 | 65899 |
| 16th Floor | 72266 | 71633 |
| 17th Floor | 72266 | 71633 |
| 18th Floor | 66269 | 65899 |
| 19th Floor | 72266 | 71633 |
| 20th Floor | 72266 | 71633 |



2ND FLOOR (LOW-RISE)

TYPICAL FLOOR PLAN

3th, 5th, 6th, 8th, 9th 10th, 12th & 13th Floor

| | Block A (Saleable Area in sft) | Block B (Saleable Area in sft) |
|------------------------|-----------------------------------|-----------------------------------|
| G. Floor | 101685 | |
| 1st Floor | 100647 | |
| Environmental Deck | | |
| 2nd Floor | 68947 | 68350 |
| 3 rd Floor | 68947 | 68350 |
| 4th Floor | 63072 | 62740 |
| 5 th Floor | 68947 | 68350 |
| 6th Floor | 68947 | 68350 |
| 7th Floor | 63072 | 62740 |
| 8 th Floor | 68947 | 68350 |
| 9 th Floor | 68947 | 68350 |
| 10 th Floor | 68947 | 68350 |
| 11th Floor | 63072 | 62740 |
| 12 th Floor | 68947 | 68350 |
| 13 th Floor | 68947 | 68350 |
| 14th Floor | 72266 | 71633 |
| 15th Floor | 66269 | 65899 |
| 16th Floor | 72266 | 71633 |
| 17th Floor | 72266 | 71633 |
| 18th Floor | 66269 | 65899 |
| 19th Floor | 72266 | 71633 |
| 20th Floor | 72266 | 71633 |

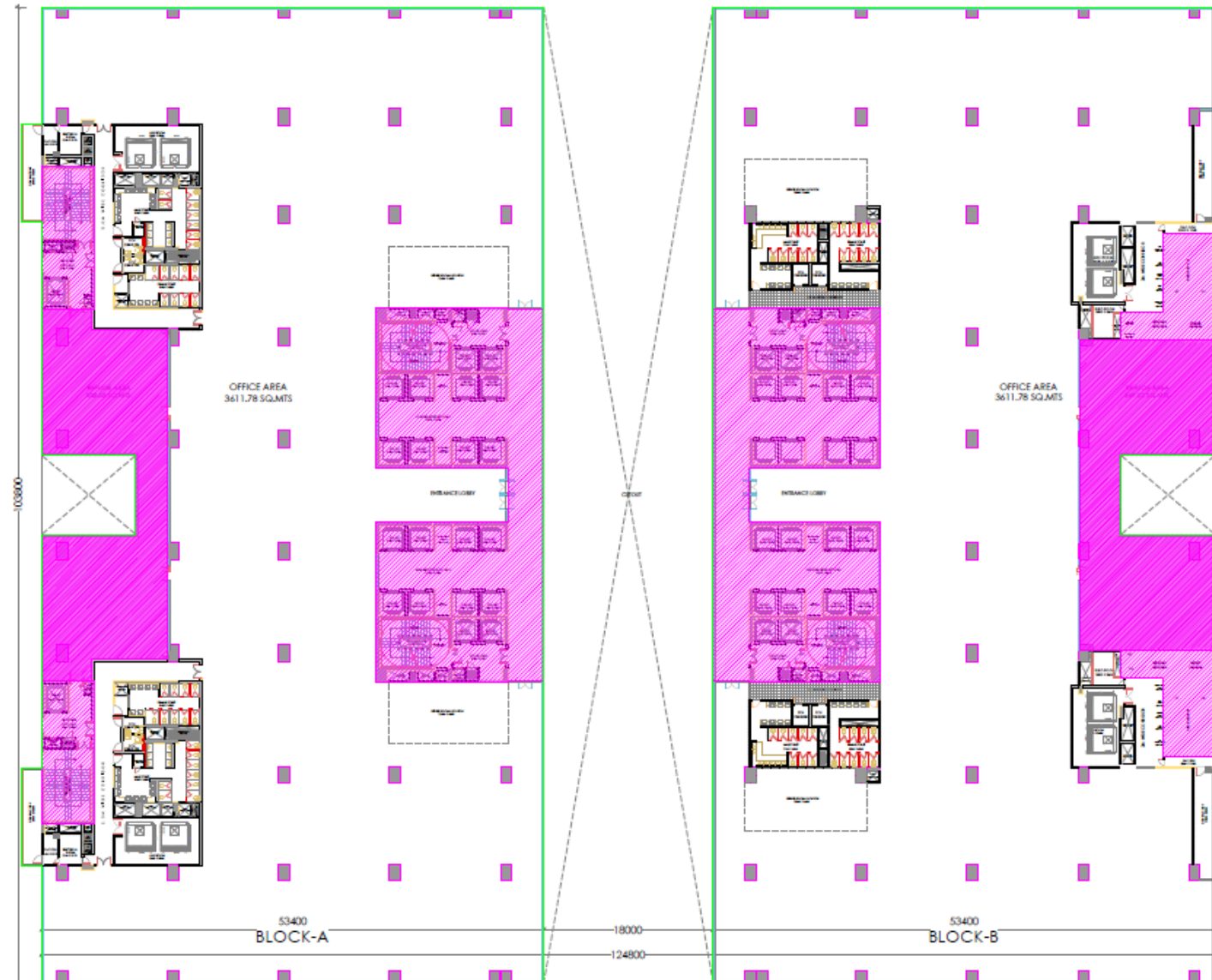


3rd, 5th, 6th, 8th To 10th, 12 & 13th TYPICAL FLOOR (LOW-RISE)

TYPICAL FLOOR PLAN

4th, 7th & 11th Floor

| | Block A (Saleable Area in sft) | Block B (Saleable Area in sft) |
|--------------------|-----------------------------------|-----------------------------------|
| G. Floor | 101685 | |
| 1st Floor | 100647 | |
| Environmental Deck | | |
| 2nd Floor | 68947 | 68350 |
| 3rd Floor | 68947 | 68350 |
| 4th Floor | 63072 | 62740 |
| 5th Floor | 68947 | 68350 |
| 6th Floor | 68947 | 68350 |
| 7th Floor | 63072 | 62740 |
| 8th Floor | 68947 | 68350 |
| 9th Floor | 68947 | 68350 |
| 10th Floor | 68947 | 68350 |
| 11th Floor | 63072 | 62740 |
| 12th Floor | 68947 | 68350 |
| 13th Floor | 68947 | 68350 |
| 14th Floor | 72266 | 71633 |
| 15th Floor | 66269 | 65899 |
| 16th Floor | 72266 | 71633 |
| 17th Floor | 72266 | 71633 |
| 18th Floor | 66269 | 65899 |
| 19th Floor | 72266 | 71633 |
| 20th Floor | 72266 | 71633 |



4th, 7th & 11th TYPICAL REFUGE FLOOR

TYPICAL FLOOR PLAN

14th, 16th, 17th, 19th & 20th Floor

| | Block A (Saleable Area in sft) | Block B (Saleable Area in sft) |
|--------------------|-----------------------------------|-----------------------------------|
| G. Floor | 101685 | |
| 1st Floor | 100647 | |
| Environmental Deck | | |
| 2nd Floor | 68947 | 68350 |
| 3rd Floor | 68947 | 68350 |
| 4th Floor | 63072 | 62740 |
| 5th Floor | 68947 | 68350 |
| 6th Floor | 68947 | 68350 |
| 7th Floor | 63072 | 62740 |
| 8th Floor | 68947 | 68350 |
| 9th Floor | 68947 | 68350 |
| 10th Floor | 68947 | 68350 |
| 11th Floor | 63072 | 62740 |
| 12th Floor | 68947 | 68350 |
| 13th Floor | 68947 | 68350 |
| 14th Floor | 72266 | 71633 |
| 15th Floor | 66269 | 65899 |
| 16th Floor | 72266 | 71633 |
| 17th Floor | 72266 | 71633 |
| 18th Floor | 66269 | 65899 |
| 19th Floor | 72266 | 71633 |
| 20th Floor | 72266 | 71633 |



14th, 16th, 17th, 19th & 20th TYPICAL FLOOR (HIGH-RISE)

TYPICAL FLOOR PLAN

15th & 18th Floor

| | Block A (Saleable Area in sft) | Block B (Saleable Area in sft) |
|--------------------|-----------------------------------|-----------------------------------|
| G. Floor | 101685 | |
| 1st Floor | 100647 | |
| Environmental Deck | | |
| 2nd Floor | 68947 | 68350 |
| 3rd Floor | 68947 | 68350 |
| 4th Floor | 63072 | 62740 |
| 5th Floor | 68947 | 68350 |
| 6th Floor | 68947 | 68350 |
| 7th Floor | 63072 | 62740 |
| 8th Floor | 68947 | 68350 |
| 9th Floor | 68947 | 68350 |
| 10th Floor | 68947 | 68350 |
| 11th Floor | 63072 | 62740 |
| 12th Floor | 68947 | 68350 |
| 13th Floor | 68947 | 68350 |
| 14th Floor | 72266 | 71633 |
| 15th Floor | 66269 | 65899 |
| 16th Floor | 72266 | 71633 |
| 17th Floor | 72266 | 71633 |
| 18th Floor | 66269 | 65899 |
| 19th Floor | 72266 | 71633 |
| 20th Floor | 72266 | 71633 |



15th & 18th FLOOR (HIGH RISE) REFUGE

THANK YOU



WESTERN
CONSTRUCTIONS

8D, 8thFloor, Western Pearl, Survey
No.13(P), Hi-Tech City Main Road,
Kondapur, Hyderabad - 500 084, T.S. India.