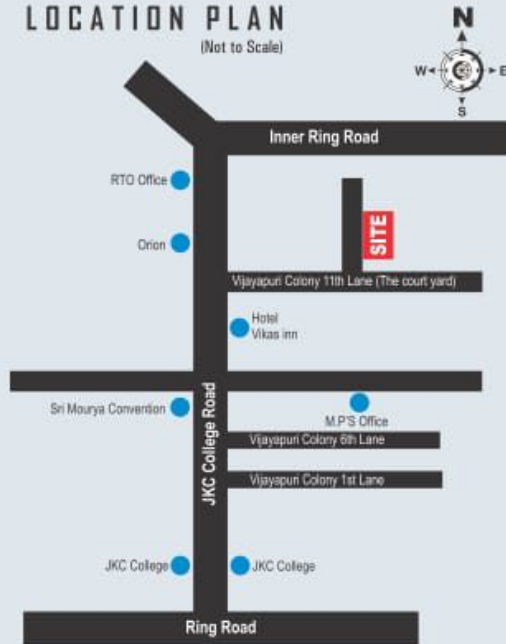


## LOCATION PLAN (Not to Scale)



### HIGHLIGHTS.

- 3 BHK Independent flats.
- Construction of each flat with 100% vastu.
- Stilt floor fully left for parking.
- Besides JKC college road
- Construction with good quality building materials and with Municipal Water
- Experienced and Reliable Builders.



# Yashoda ENCLAVE

@ 11th Lane Vijayapuri colony(The Court Yard), JKC college Road, Guntur.



## VAKULA INFRA

Battula Suresh Babu - 94410 15050  
Teja Sabbineni - 90007 99459

Address :  
5th Lane Annapurna Nagar East  
Venkateswara Colony Road, Near Nandakinivas Apartment  
Gorantla, GUNTUR - 522 034.

email : bsb2907@gmail.com

website : www.srigayatriconstructions.com

### Architects

G.V. KRISHNA RAO  
GVK ASSOCIATES  
Architects & Interior Designers  
4th Lane, Lakshimpuram, Guntur.  
Cell : 94400 21809

### Structural Engineers

V.A.REDDY B.E. (MS) Structural  
Ph : 0863 - 2240983  
Cell : 98499 57900

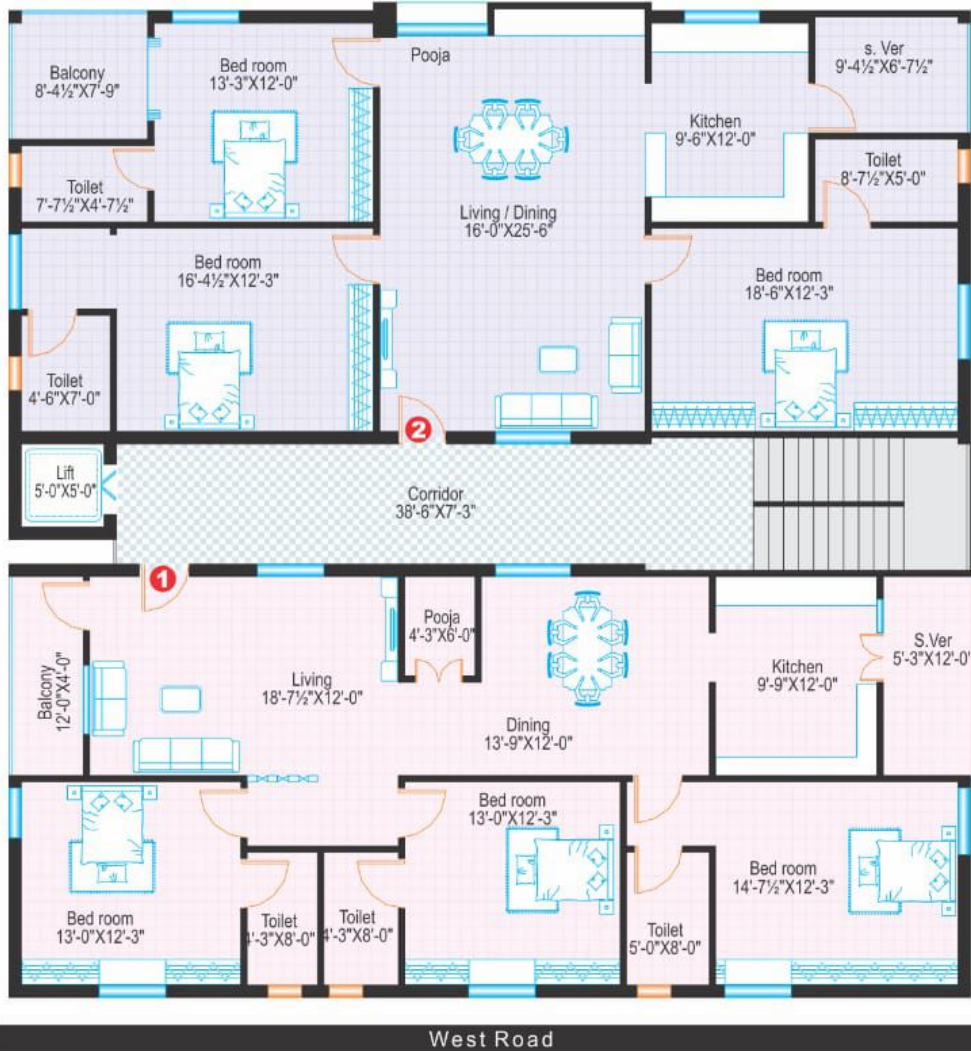


SCAN ME



Vakula Infra

## TYPICAL FLOOR PLAN



### Area Statement

Fiat No.	101	102
Area in Sft.	1970	1970

**RERA Registration  
No.**

## Specifications

Structure	: RCC framed structure.  Termite control chemicals will be used at every stage.  Water proofing chemicals will be used at every stage.
Super structure and walls	: Red brick masonry External walls 9" thick, internal walls 4 1/2" thick in cement mortar and plastering with sponge finish.
Doors and windows	: Main door frame is of teak wood with teak wood plain shutter-polish finish. Internal door frames are of paint quality teak wood with designed flush shutters. Windows with <b>UPVC</b> frames and shutters with MS plain safety grills and glass.
Flooring	: <b>4' x 2' vitrified tile flooring</b> for living, dining, bed rooms and kitchen. Anti skid ceramic tile flooring for bath rooms, balconies, utility and corridors.
Kitchen finish	: Granite platform with granite sink and wall tiles upto 3.6 feet height.
Toilets	: <b>Concept digital tiles</b> up to door height. European commode, wash basin, 2 in 1 wall mixtures with over head shower will be provided. <b>Flooring will be laid with 3mm spacers filled with apoxy.</b> All sanitary ware is of white color.
Plumbing	: CPVC water lines with CP plumbing fixtures of reputed make. PVC drain lines for drainage.
Electrical fittings	: Concealed copper wiring of ISI standard make, modular switches, isolators and MCBs. 3 phase connection. Fans and tube lights will be given.
Wash areas	: Ceramic digital tiles dadoing up to 3 feet height.
Painting	: Internal walls with wall care and 2 coats of premium emulsion paints. External walls with 2 coats of exterior emulsion paints.
POP	: Full POP Ceiling for top floor flats. POP border work in remaining flats.
Granite	: Good quality Black granite in Kitchen, Hall and Dining.
Cup boards	: Cement planks up to 25% of flat area with plywood and Sunglass.
Lift	: 6 Passenger lift of Sunrise make or equivalent with backup generator will be provided.
Parking	: One car parking for each flat.
Generator	: 20 KVA sound proof generator for common lighting, lift, 3 fans and 4 lights in each flat.
Municipal water	: Water lines, storage sump, over head tank and mortar will be provided.
Owner's cost.	: Registration charges, GST, labour cess, Electricity service charges, Municipal water charges and any other charges laid down by the Government.
Note	: This brochure is only a conceptual presentation of the project and not a legal offering. The promoters reserve the right to make changes in the elevation, plans and specifications as deemed fit.